

Welcome to



# WEAR

Film anywhere,  
mount to anything,  
record life at full speed.



Find additional mounts and accessories  
at [www.VholdR.com/store](http://www.VholdR.com/store)



helmet



goggle



rollbar



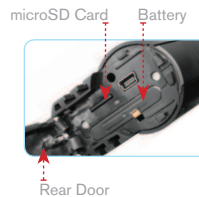
vented helmet



handlebar

(vee-holder) **VholdR**<sup>TM</sup>

# SHOOT



## READY

Open the rear door, insert the **battery**, then load your **microSD** memory card. Close the door. You're ready to shoot.



## MOUNT

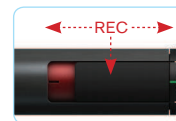
VholdR™ films on its side or vertically. Pick your spot. Align the rails forward and attach the mount to any helmet or flat surface. Slide the mount grooves on to the rails until they lock. You're ready to aim.

\*additional mounts are available



## AIM

Push rear door button. Align lasers horizontally by **rotating lens**. Align vertically by **adjusting the mount**. This assures proper framing. Get the shot, every time.



## FIRE

Slide the record button forward. Wait for VholdR™ to boot. Hear the beep with the red light and you're on. Slide it back, hear the two beeps, and you're off. You're ready to roll.

# ACTION

# SHARE



## SOFTWARE

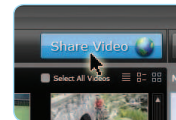
Install VholdR Desktop from the CD (PC only) or download it from [www.vholdr.com](http://www.vholdr.com).

\*Mac users can upload directly to VholdR.com.



## CONNECT

With VholdR™ Desktop installed, everything will go into motion on its own. Follow the bouncing ball as your videos download to your computer. Watch, Tag, and Organize.



## SHARE

Select your favorite videos, or all of them, and push SHARE. Watch your videos go live on [www.VholdR.com](http://www.VholdR.com).



## TELL EVERYONE

Send invites to everyone you know. They can watch, rate, and subscribe to your every adventure.

**VholdR.com**

# User Manual Information

Model No.:1100

FCC ID:J6I250712V1100

Warning: Changes or modifications to this unit not expressly approved by the party responsible for compliance could void the user's authority to operate the equipment.

NOTE: This equipment has been tested and found to comply with the limits for a Class B digital device, pursuant to Part 15 of the FCC Rules. These limits are designed to provide reasonable protection against harmful interference in a residential installation. This equipment generates, uses and can radiate radio frequency energy and, if not installed and used in accordance with the instructions, may cause harmful interference to radio communications.

However, there is no guarantee that interference will not occur in a particular installation. If this equipment does cause harmful interference to radio or television reception, which can be determined by turning the equipment off and on, the user is encouraged to try to correct the interference by one or more of the following measures:

- ☐ Reorient or relocate the receiving antenna.
- ☐ Increase the separation between the equipment and receiver.
- ☐ Connect the equipment into an outlet on a circuit different from that to which the receiver is connected.
- ☐ Consult the dealer or an experienced radio/TV technician for help.

This device complies with Part 15 of the FCC Rules. Operation is subject to the following two conditions: (1) This device may not cause harmful interference, and (2) This device must accept any interference received, including interference that may cause undesired operation.



**866.397.6920**



**[support@vholdr.com](mailto:support@vholdr.com)**



**[www.vholdr.com/support](http://www.vholdr.com/support)**

Thank You.