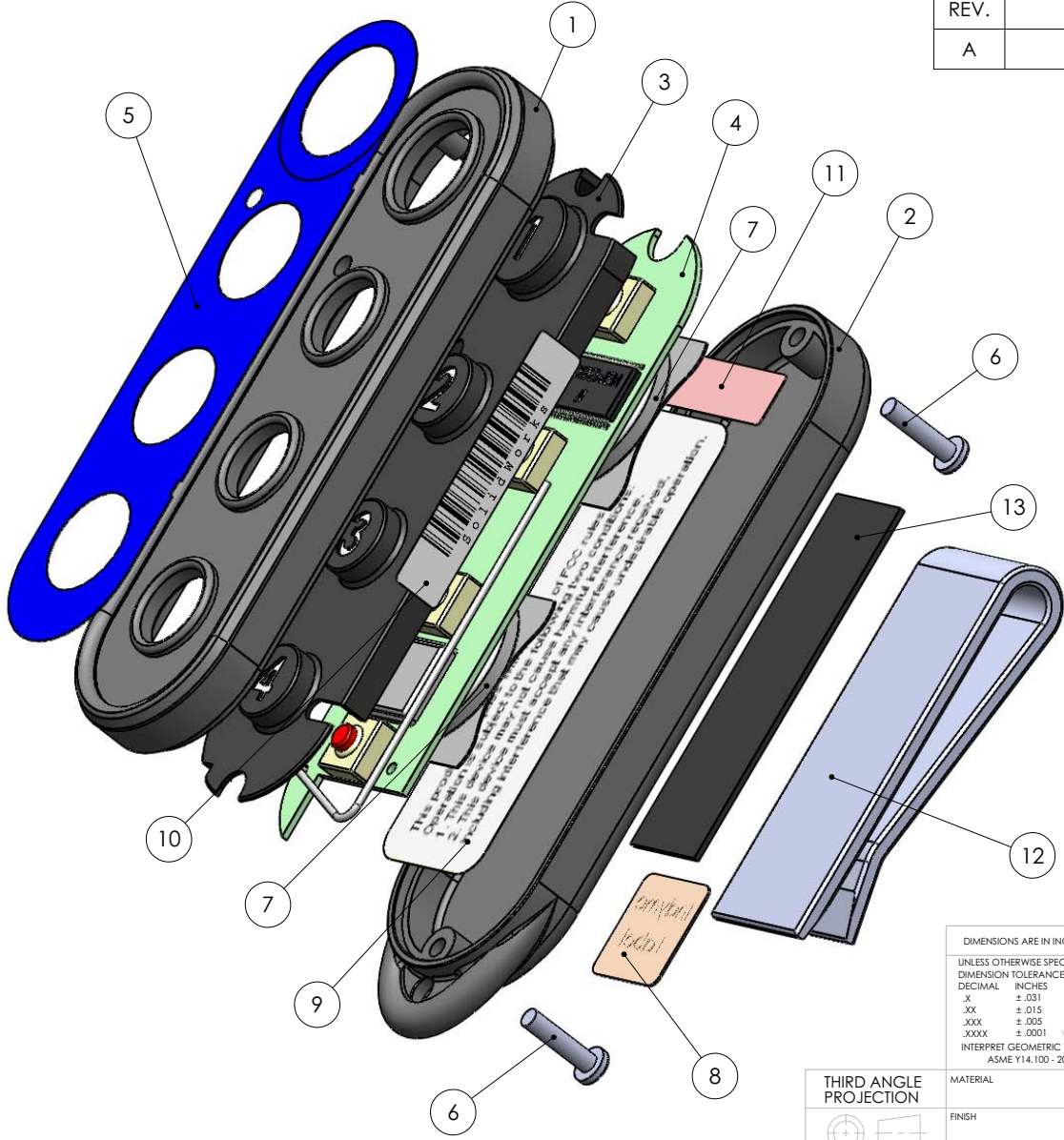


THIS DOCUMENT IS THE PROPERTY OF INDYME CORPORATION AND IS CONSIDERED COMPANY CONFIDENTIAL. THE REPRODUCTION OR USE OF INFORMATION HEREIN, ALL OR IN PART, IS EXPRESSLY PROHIBITED WITHOUT WRITTEN CONFIRMATION FROM A PRINCIPAL MEMBER OF MANAGEMENT AT INDYME.



REVISIONS			
REV.	DESCRIPTION	DATE	APPROVED
A	Release for Review	5/18/09	

CB526 Pocket Callbox 230617-XX BOM				
Item Number	Item Reference	Part Number	Description	Quantity
1	PL1	203029-00	Top Housing	1
2	PL2	203029-01	Bottom Housing	1
3	PL3	150032-00	Keypad	1
4	PCA1	251560-00	PCA	1
5	OVK1	260135-XX	Overlay NXXX	1
6	FS1	180220-01	#2 x 3/8 Philips Plastite Screw	2
7	BAT1	140109-01	CR2032 Coin Cell Batteries	2
8	LBL1	220234-02	Label, Zebra .5"x.4375"	1
9	LBL2	220198-05	Label, FCC 2 .25"x.75"	1
10	LBL3	220234-03	Label, Poly 1.25"x.25" White	1
11	LBL4	220005-00	Label, Water Detection, .75"x.25"Red	1
Accessory Kit				1
12	PL4	185008-01	Belt Clip	1
13	MH1	360000-03	Double sided tape, 1/2"x 1/16"	1.7"
14	INS1	430668-00	Prgm & Battery R&R Instructions	1

DIMENSIONS ARE IN INCHES			APPROVALS		DATE
UNLESS OTHERWISE SPECIFIED DIMENSION TOLERANCES ARE: DECIMAL INCHES ANGLES X ± .031 ± 0.5° .XX ± .015 .XXX ± .005 .XXXX ± .0001 √ 63 μINCH INTERPRET GEOMETRIC TOL PER: ASME Y14.100 - 2000			DRAWN	G King Larry O	4/21/09 5/18/09
			CHECKED		
			ENG APPR.	Fred A	5/18/09
			MFG APPR.		
			COMMENTS THIS DRAWING MAY NOT CONTAIN ALL THE DIMENSIONS NECESSARY TO TOOL OR MANUFACTURE THIS PART. FOR ACCURATE DIMENSIONS, CONTOURS AND FEATURES, REFER TO THE 3D COMPUTER MODEL CREATED IN SOLIDWORKS 2009 FILE NAME: 230617-00_A_CB526 3-18-09.SLDPR1		
MATERIAL					
FINISH					
DO NOT SCALE DRAWING					

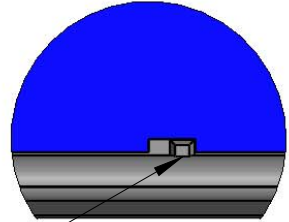
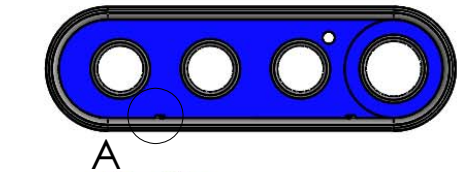
THIRD ANGLE
PROJECTION



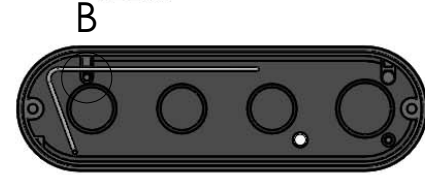
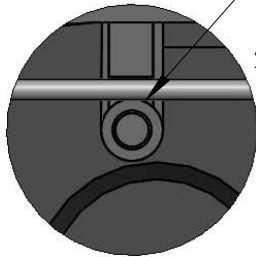
indyme solutions

CB526 Assembly Document

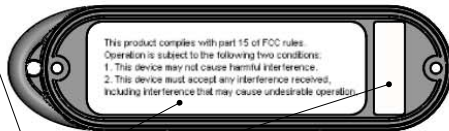
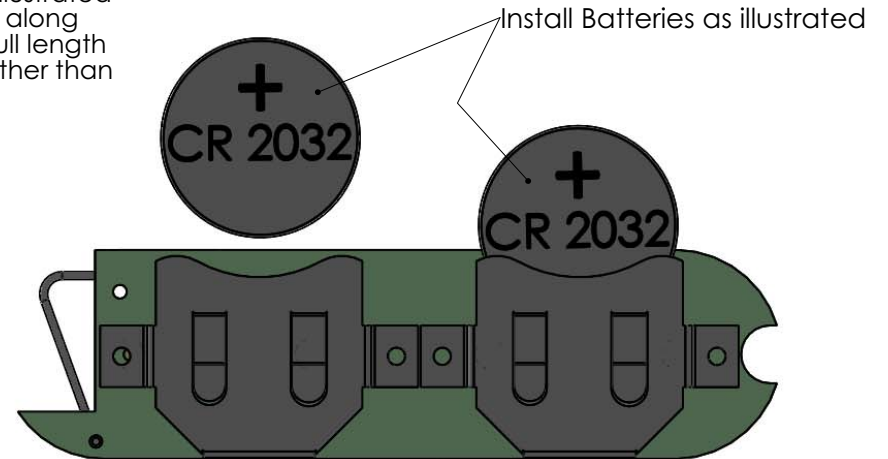
SIZE	B	CAGE CODE	DWG NO.	430667-00	A
SCALE	1:1			Sheet 1 of 2	



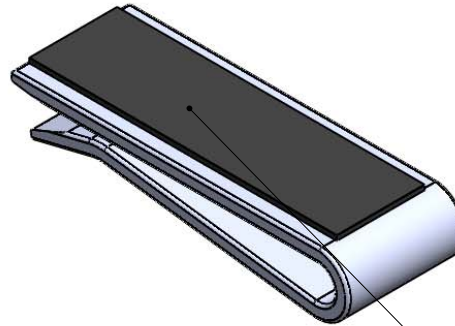
When Installing overlay use tabs align overlay on face of plastic to start overlay attachment process



- When installing PCA
1. Align antenna such that it is captured by post as illustrated
 2. Antenna must be flat along back of membrane full length and **Not touch PCA** other than solder point



Install labels as illustrated



Install double sided adhesive to belt clip as illustrated then place in bag with instructions. **"Do not remove adhesive cover this side, Do not attach to 526"**

THIRD ANGLE PROJECTION



DIMENSIONS ARE IN INCHES			APPROVALS	DATE
UNLESS OTHERWISE SPECIFIED: DIMENSION TOLERANCES ARE:			DRAWN: G King	
DECIMAL	INCHES	ANGLES	CHECKED:	
.X	± .031	± 0.5 °	ENG APPR:	
.XX	± .015		MFG APPR:	
.XXX	± .005			
.XXXX	± .0001	✓ 63 μINCH		
INTERPRET GEOMETRIC TOL PER: ASME Y14.100 - 2000				
MATERIAL			COMMENTS THIS DRAWING MAY NOT CONTAIN ALL THE DIMENSIONS NECESSARY TO TOOL OR MANUFACTURE THIS PART. FOR ACCURATE DIMENSIONS, CONTOURS AND FEATURES, REFER TO THE 3D COMPUTER MODEL CREATED IN SOLIDWORKS 2009. FILE NAME: 230617-00_A CB526 3-18-09.SLDPRT	
FINISH				
DO NOT SCALE DRAWING				

indyme solutions

CB526 Assembly Document

SIZE: B	CAGE CODE:	DWG NO.: 430667-00	A
SCALE: 1:1			Sheet 2 of 2