

98-29

ASTROFLEX INC.

FABRIQUE AU CANADA
MADE IN CANADA

109-052-302-06

P7

8F09

①

FM-01

P8

P9

The main PCB area contains a central microcontroller chip labeled **PTC16054** with sub-labels **A-10/SS** and **97255CW**. Surrounding it are numerous resistors (R1-R18), capacitors (C1-C5), and other electronic components. A circular component, possibly a lens or sensor, is mounted in the center. Labels for components include **R1, R2, R3, R4, R5, R6, R7, R8, R9, R10, R11, R12, R13, R14, R15, R16, R17, R18**, **C1, C2, C3, C4, C5**, **Y1**, and **U1**. A large handwritten label **FM-01** is on the left side. A circular hole is present in the center of the board.

JAP

P1

P4

P12

F P11

P10

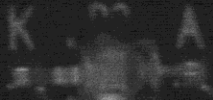
98-29

ASTROFLEX INC.

FABRIQUE AU CANADA

MADE IN CANADA

109-052-302-06

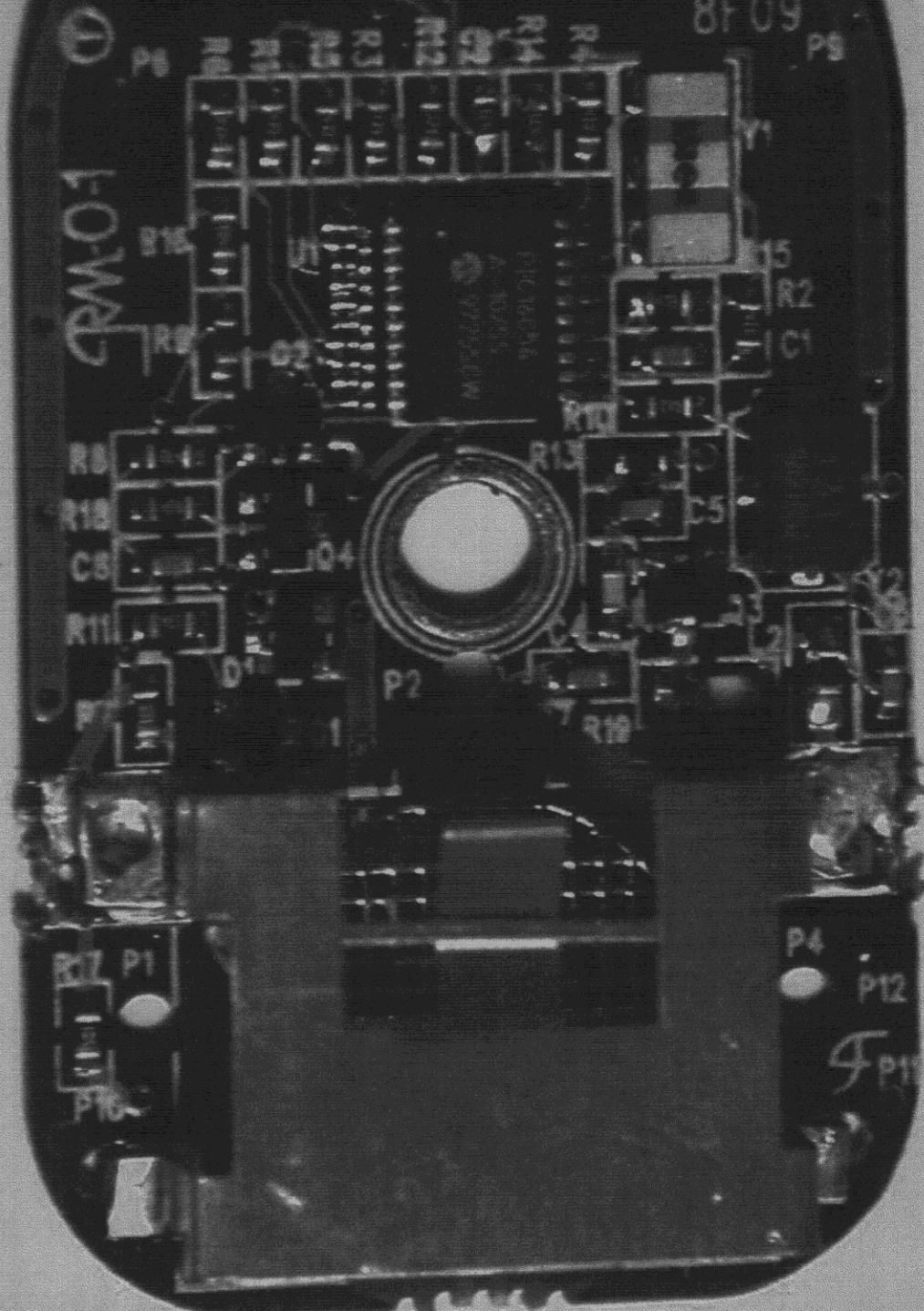


P7

8F09

Ⓟ

QW-01



R8

R18

C5

R11

R17

P16

P8

B15

R9

R8

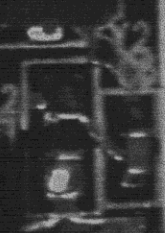
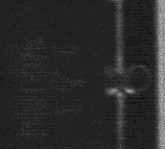
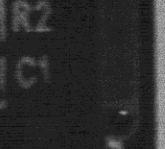
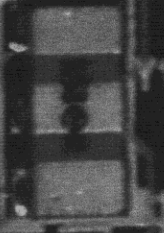
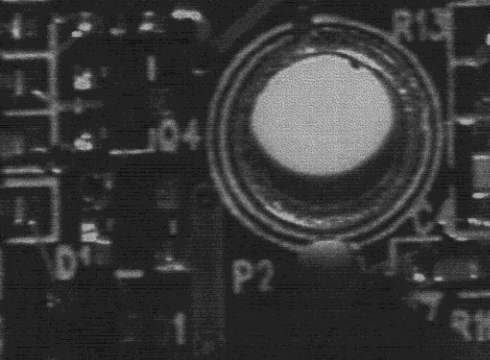
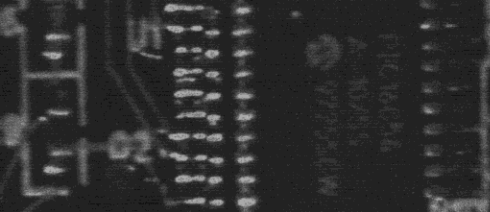
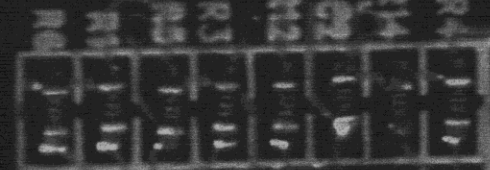
R18

C5

R11

P1

P16



P4 P12

FP11

