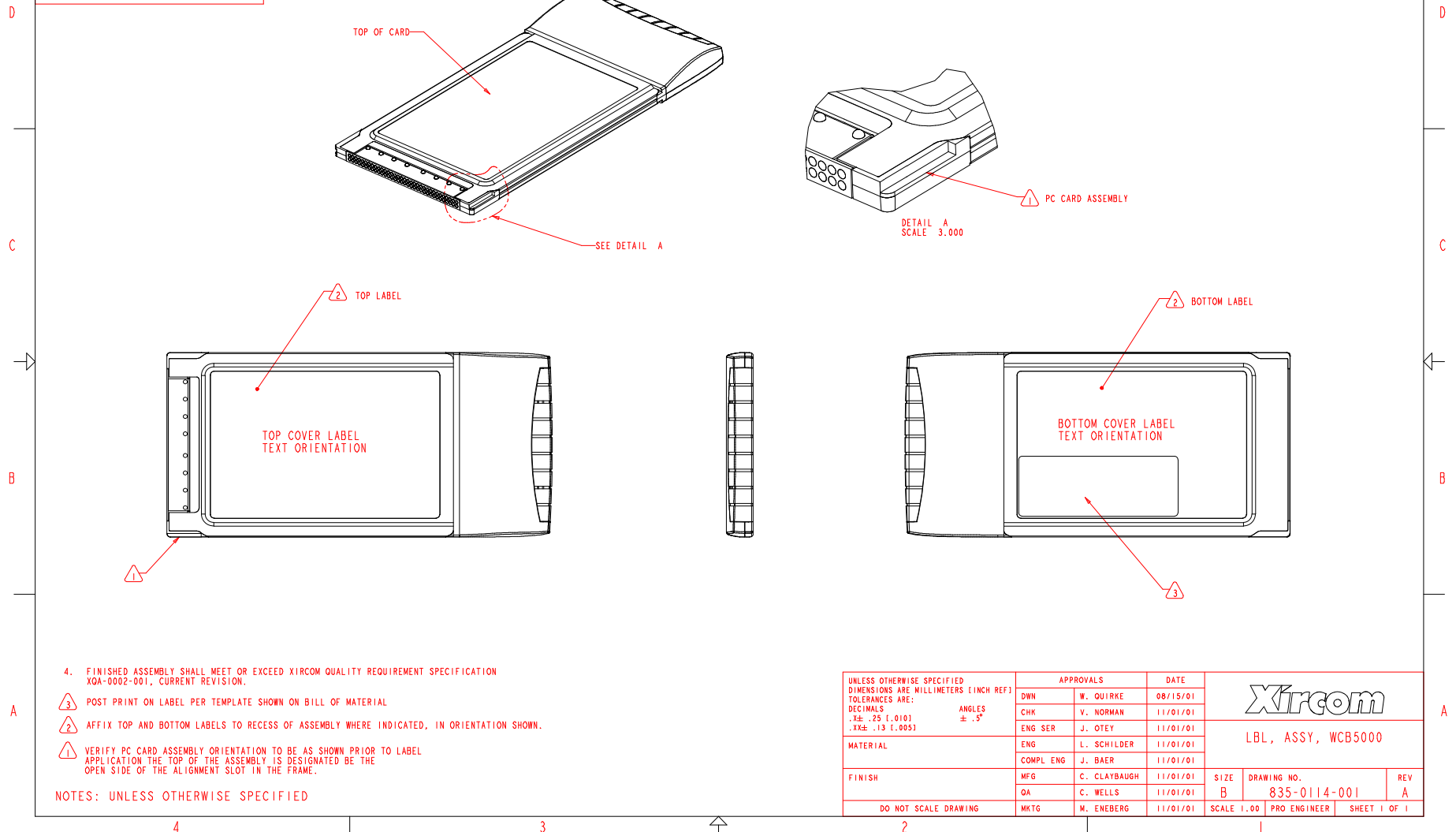


THIS DOCUMENT CONTAINS INFORMATION PROPRIETARY TO XIRCOM, INC. AND IS FURNISHED FOR THE PURPOSE OF INSTALLATION, OPERATION OR MAINTENANCE OF THE ITEM(S). ITS CONTENTS ARE NOT AUTHORIZED BY XIRCOM, INC. © 2001 ALL RIGHTS RESERVED. COPYING OF THIS DOCUMENT IS UNLAWFUL WITHOUT THE WRITTEN PERMISSION OF XIRCOM, INC. THOUSAND OAKS, CA.

REVISIONS				
ZONE	REV	DESCRIPTION	DATE	INC. BY
	I	PROTOTYPE REL PER PCN 23797	9/30/01	WO
	A	PRODUCTION REL PER ECN 23945	11/01/01	WO



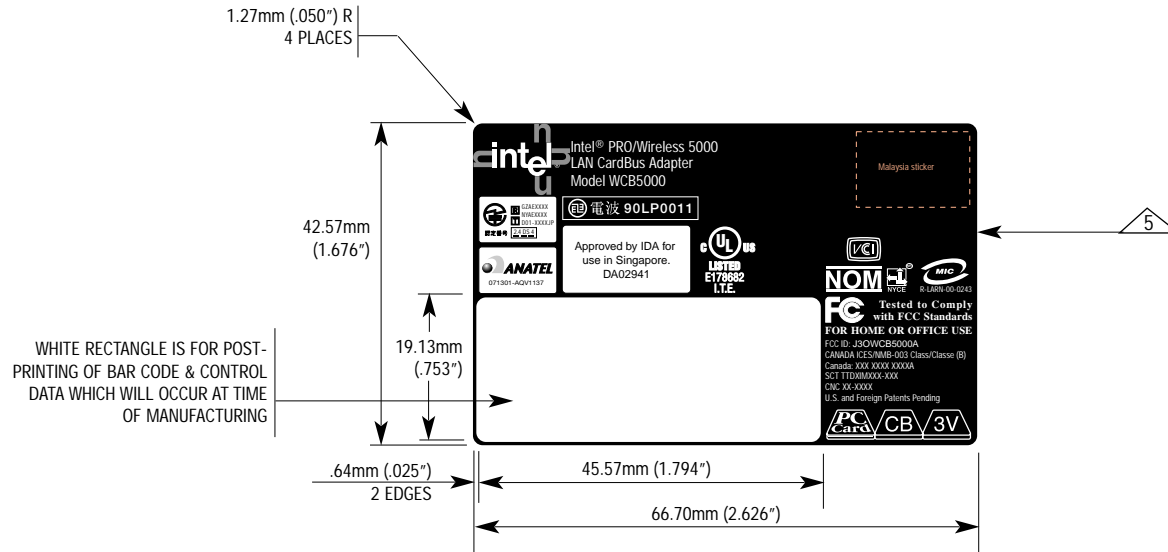
4. FINISHED ASSEMBLY SHALL MEET OR EXCEED XIRCOM QUALITY REQUIREMENT SPECIFICATION XQA-0002-001, CURRENT REVISION.

- ③ POST PRINT ON LABEL PER TEMPLATE SHOWN ON BILL OF MATERIAL
- ② AFFIX TOP AND BOTTOM LABELS TO RECESS OF ASSEMBLY WHERE INDICATED, IN ORIENTATION SHOWN.
- ① VERIFY PC CARD ASSEMBLY ORIENTATION TO BE AS SHOWN PRIOR TO LABEL APPLICATION THE TOP OF THE ASSEMBLY IS DESIGNATED BE THE OPEN SIDE OF THE ALIGNMENT SLOT IN THE FRAME.

NOTES: UNLESS OTHERWISE SPECIFIED

UNLESS OTHERWISE SPECIFIED DIMENSIONS ARE MILLIMETERS (INCH REF) TOLERANCES ARE: DECIMALS .15 (1.010) .XXE .13 (1.005)	APPROVALS		DATE	Xircom
		DWN	W. QUIRKE	
	CHK	V. NORMAN	11/01/01	LBL, ASSY, WCB5000
	ENG SER	J. OTEY	11/01/01	
	ENG	L. SCHILDER	11/01/01	SIZE B DRAWING NO. 835-0114-001 REV A
	COMPL ENG	J. BAER	11/01/01	
	MFG	C. CLAYBAUGH	11/01/01	SCALE 1.00 PRO ENGINEER SHEET 1 OF 1
	OA	C. WELLS	11/01/01	
DO NOT SCALE DRAWING	MKTG	M. ENEBERG	11/01/01	

REVISIONS			
REV.	DESCRIPTION	DATE	APPROVED
A	Per ECN 23528		N. Guetschoff



11

• REF. ELECTRONIC ARTWORK #832-2672-001A, ADOBE ILLUSTRATOR 9.0 FILE

10

• LABEL MATERIAL AND SUPPLIER MUST BE UL APPROVED

9

• A/W PART NUMBERS TO PRINT ON ALL FILM LAYERS (100% SCREEN OF PMS OR CMYK COLORS) IF FILM IS REOD

8

• CLEANING TEST: PERFORM LABEL CLEANING TEST PER XIRCOM QA LABEL CLEANING TEST #QAI-020

7

• GAP BETWEEN LABELS ON ROLL TO BE BETWEEN 10.16MM (.400") TO 12.70MM (.500")

6

• ALL TEXT AND GRAPHICS REVERSE OUT WHITE UNLESS OTHERWISE SPECIFIED ON FAB OR IN ART FILE

5

• BLACK

4

• FOR LABEL ORIENTATION ON ROLL, REF: FAB DWG #802-0016-001, PAGEMAKER 5.0 FILE

3

• MARK PART NUMBER AND REVISION IN CONSPICUOUS AREA ON OUTSIDE OF BULK PACKAGING

2

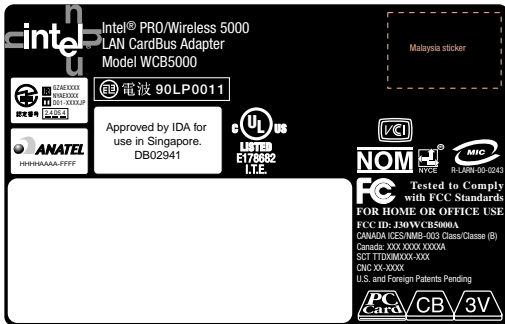
FINISH • MATTE

1

MATERIAL • MYLAR, WHITE, 2.3 MIL FACESTOCK, 3M#7815; ACRYLIC PERM ADHESIVE, 3M#310, 0.8 MIL(PENANG REQMT) OR XIRCOM APPROVED EQUIVALENT

NOTES: (UNLESS OTHERWISE SPECIFIED)

UNLESS OTHERWISE SPECIFIED DIMENSIONS ARE IN INCHES TOLERANCES ARE: FRACTIONS DECIMALS ANGLES ± .008 MATERIAL 10 1 FINISH 2 DO NOT SCALE DRAWING	CONTRACT NO.					
	APPROVALS				DATE	
	DRAWN N. Guetschoff		10-18-01	LABEL, BOTTOM, WCB5000		
	CHECKED K. Hoysepian					
APPROVED T. Aerden B. Winter L. Thum			SIZE A	FSCM NO.	DRAWING NO. 830-1774-001	REV. A
SCALE = 1" = 1"			SHEET 1 OF 1			



A/W #832-2672-001 A Master 2.4
WCB5000
FAB #830-1774-001
ECN 23528