



Features

- Small and lightweight
- No tuning components
- Available in tape and reel or tray packing for automatic mounting

Electrical

Frequency Range	2400 – 2500 MHz
Peak Gain ⁽¹⁾	0 dBi
VSWR ⁽¹⁾	less than 2.0:1
Polarization	linear
Azimuth Beamwidth	omnidirectional
Power Handling	10 Watt cw
Feed Point Impedance	50 Ohms unbalanced

Note (1) Figures dependent on ground plane size

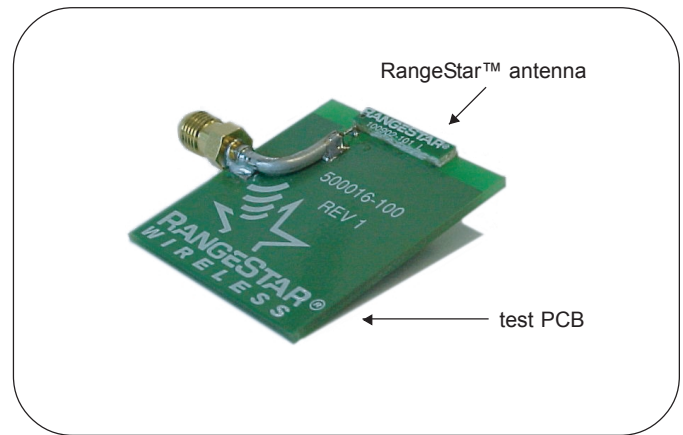
Mechanical

Size	18.2 x 3.9 x 1.6 mm
Weight	less than 1 g
Mounting	surface mount technology

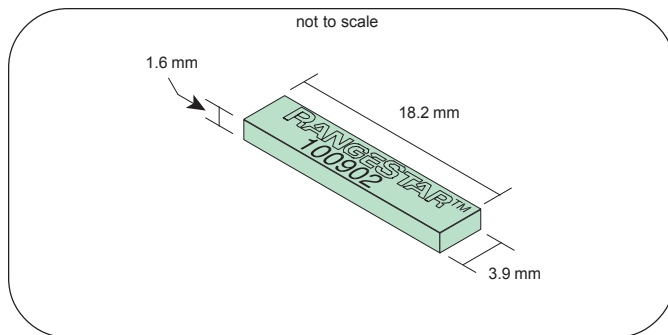
Ultima™ Series Antennas

This small embedded antenna provides the most reliable, easy-to-use, and adjustment-free antenna technology for handling during assembly and implementation by developers.

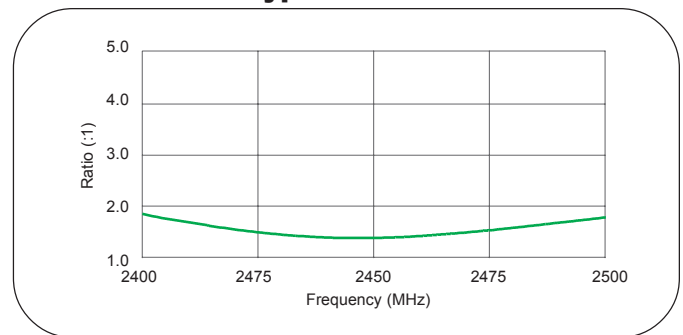
Typical Mounting



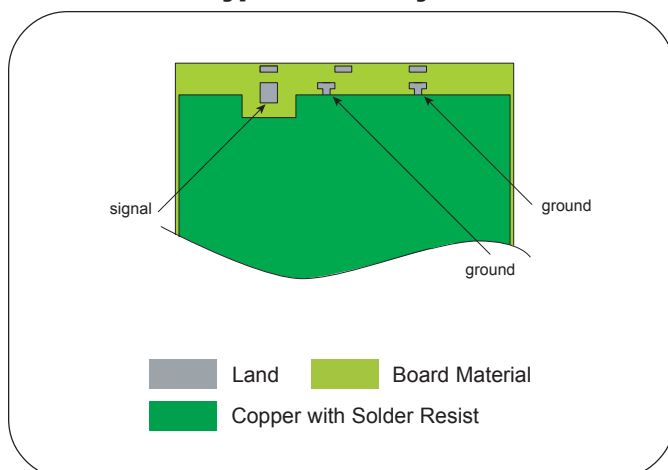
Dimensions



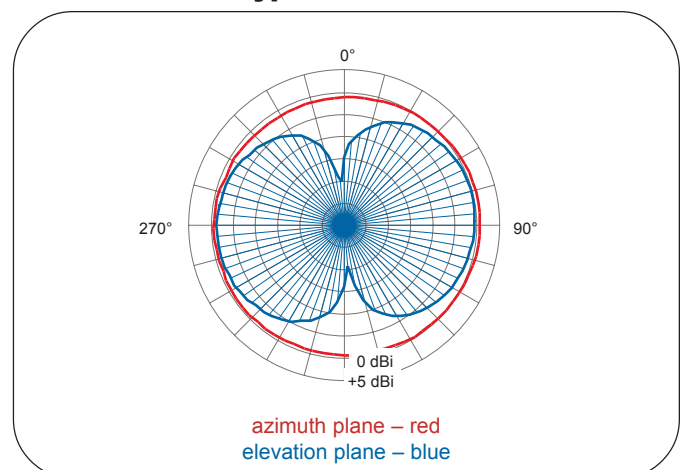
Typical VSWR



Typical Pad Layout



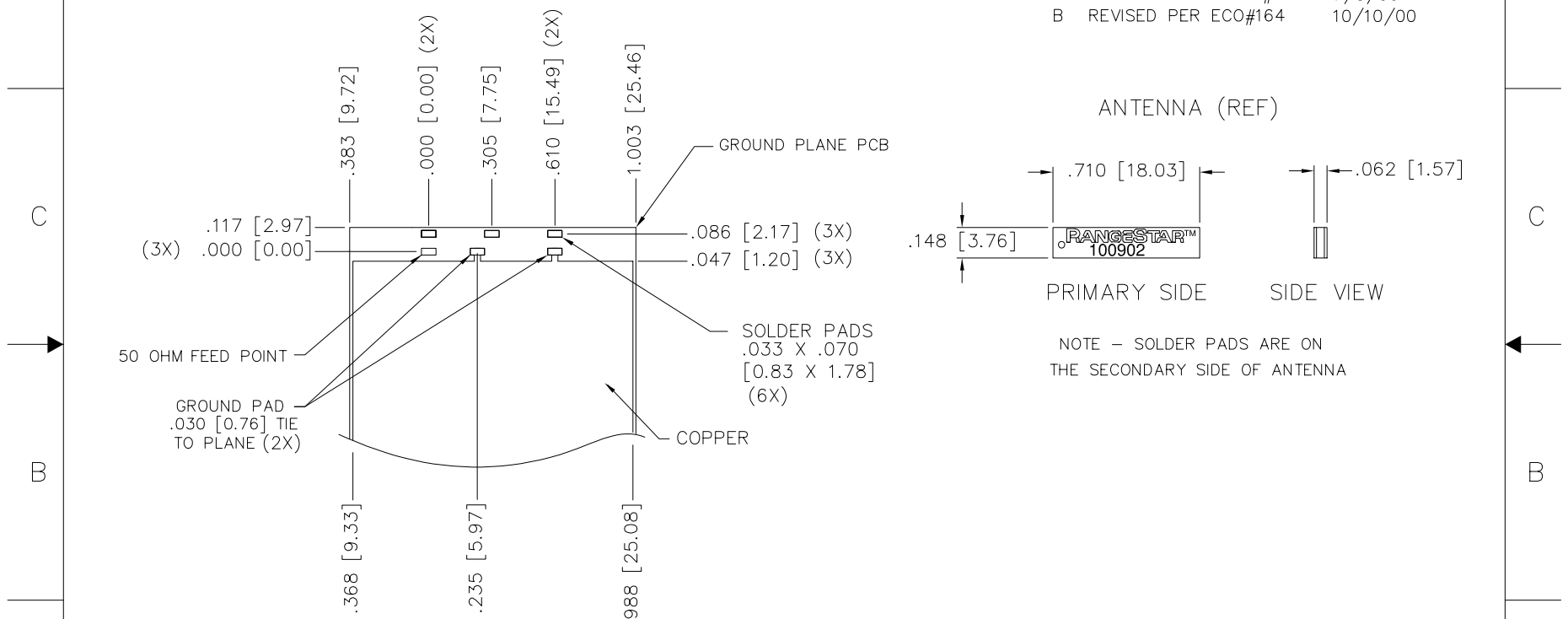
Typical Pattern



4 3 2 1

SUGGESTED PCB PAD LAYOUT FOR GROUND PLANE

REVISIONS			
REV.	DESCRIPTION	DATE	APPROVED
1	ENG REL	3/31/00	
2	REVISED	4/5/00	
A	PROD REL PER ECO#150	7/5/00	
B	REVISED PER ECO#164	10/10/00	



NOTE - SOLDER PADS ARE ON THE SECONDARY SIDE OF ANTENNA

PRIMARY SIDE

UNLESS OTHERWISE SPECIFIED DIMENSIONS ARE IN INCHES AND IN MILLIMETERS. TOLERANCES ARE: INCHES .XX±.01 ± [.25] .XXX±.005 ± [.12]	DO NOT SCALE DRAWING	
	APPROVALS	DATE
MATERIAL	DRAWN R JONEZ	6/19/00
FINISH	CHECK	ENG
	MKTNG	ISSUED
SEE NOTES		
SEE NOTES		

RANGESTAR WIRELESS™
9565 SOQUEL DRIVE
APTOS, CALIFORNIA 95003

DATA SHEET, 2.4GHz,
ISM BAND BLUETOOTH ANT.

CONFIDENTIAL: THIS INFORMATION CONSTITUTES TRADE SECRETS OF RangeStar (tm) WIRELESS CORPORATION AND IS PRODUCED UNDER A NONDISCLOSURE OR MUTUAL NONDISCLOSURE AGREEMENT.

NEXT ASSY	USED ON
	2.4GHz ISM

SIZE B	DWG. NO. 100902-300	REV B
SCALE NONE	SHEET 1 of 1	

4 3 2 1