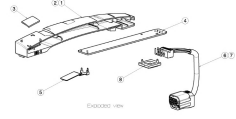
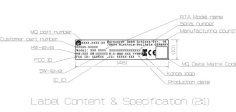
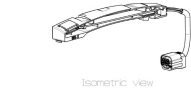
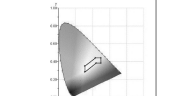


Part No.	Qty	Part No.	Part Name	Part No.	Part Name
1	1	82657-11300	ANTENNA ASSY - DNS PE DR D/S RH	1	82657-11300
2	1	82657-11300	ANTENNA ASSY - DNS PE DR D/S LH	1	82657-11300
3	1	82657-11300	ANTENNA ASSY - DNS PE DR D/S RH	1	82657-11300
4	1	82657-11300	ANTENNA ASSY - DNS PE DR D/S LH	1	82657-11300
5	1	82657-11300	ANTENNA ASSY - DNS PE DR D/S RH	1	82657-11300
6	1	82657-11300	ANTENNA ASSY - DNS PE DR D/S LH	1	82657-11300



REV	BY	DATE	DESCRIPTION
1	...	...	...
2	...	...	...
3	...	...	...
4	...	...	...



Item	Specification
Antenna Type	IP140 LED CHROMATICITY CO-ORDINATION
Operating Temperature Range	-40°C to +85°C
Storage Temperature Range	-55°C to +125°C
Operating Voltage Range	9V to 12V
Operating Current	100mA
Color	White
LED Operating Frequency	1000Hz
Socket Light Current	100mA

Part No.	Qty	Part No.	Part Name	Part No.	Part Name
1	1	82657-11300	ANTENNA ASSY - DNS PE DR D/S RH	1	82657-11300
2	1	82657-11300	ANTENNA ASSY - DNS PE DR D/S LH	1	82657-11300

Part No.	Qty	Part No.	Part Name	Part No.	Part Name
1	1	82657-11300	ANTENNA ASSY - DNS PE DR D/S RH	1	82657-11300
2	1	82657-11300	ANTENNA ASSY - DNS PE DR D/S LH	1	82657-11300
3	1	82657-11300	ANTENNA ASSY - DNS PE DR D/S RH	1	82657-11300
4	1	82657-11300	ANTENNA ASSY - DNS PE DR D/S LH	1	82657-11300
5	1	82657-11300	ANTENNA ASSY - DNS PE DR D/S RH	1	82657-11300
6	1	82657-11300	ANTENNA ASSY - DNS PE DR D/S LH	1	82657-11300

Rev	By	Date	Description
1	...	...	...
2	...	...	...
3	...	...	...
4	...	...	...

REQUIREMENTS OF CONFORMING APPROVAL OF THE FINAL ENGINEERING DESIGN TEAM...  
 1. THE PART MUST MEET FOLLOWING SPECIFICATIONS...  
 2. THE PART MUST MEET FOLLOWING REGULATIONS...  
 3. THE PART MUST MEET FOLLOWING STANDARDS...  
 4. THE PART MUST MEET FOLLOWING STANDARDS...  
 5. THE PART MUST MEET FOLLOWING STANDARDS...  
 6. THE PART MUST MEET FOLLOWING STANDARDS...  
 7. THE PART MUST MEET FOLLOWING STANDARDS...  
 8. THE PART MUST MEET FOLLOWING STANDARDS...  
 9. THE PART MUST MEET FOLLOWING STANDARDS...  
 10. THE PART MUST MEET FOLLOWING STANDARDS...  
 11. THE PART MUST MEET FOLLOWING STANDARDS...  
 12. THE PART MUST MEET FOLLOWING STANDARDS...  
 13. THE PART MUST MEET FOLLOWING STANDARDS...  
 14. THE PART MUST MEET FOLLOWING STANDARDS...  
 15. THE PART MUST MEET FOLLOWING STANDARDS...  
 16. THE PART MUST MEET FOLLOWING STANDARDS...  
 17. THE PART MUST MEET FOLLOWING STANDARDS...  
 18. THE PART MUST MEET FOLLOWING STANDARDS...  
 19. THE PART MUST MEET FOLLOWING STANDARDS...  
 20. THE PART MUST MEET FOLLOWING STANDARDS...  
 21. THE PART MUST MEET FOLLOWING STANDARDS...  
 22. THE PART MUST MEET FOLLOWING STANDARDS...  
 23. THE PART MUST MEET FOLLOWING STANDARDS...  
 24. THE PART MUST MEET FOLLOWING STANDARDS...  
 25. THE PART MUST MEET FOLLOWING STANDARDS...  
 26. THE PART MUST MEET FOLLOWING STANDARDS...  
 27. THE PART MUST MEET FOLLOWING STANDARDS...  
 28. THE PART MUST MEET FOLLOWING STANDARDS...  
 29. THE PART MUST MEET FOLLOWING STANDARDS...  
 30. THE PART MUST MEET FOLLOWING STANDARDS...  
 31. THE PART MUST MEET FOLLOWING STANDARDS...  
 32. THE PART MUST MEET FOLLOWING STANDARDS...  
 33. THE PART MUST MEET FOLLOWING STANDARDS...  
 34. THE PART MUST MEET FOLLOWING STANDARDS...  
 35. THE PART MUST MEET FOLLOWING STANDARDS...  
 36. THE PART MUST MEET FOLLOWING STANDARDS...  
 37. THE PART MUST MEET FOLLOWING STANDARDS...  
 38. THE PART MUST MEET FOLLOWING STANDARDS...  
 39. THE PART MUST MEET FOLLOWING STANDARDS...  
 40. THE PART MUST MEET FOLLOWING STANDARDS...  
 41. THE PART MUST MEET FOLLOWING STANDARDS...  
 42. THE PART MUST MEET FOLLOWING STANDARDS...  
 43. THE PART MUST MEET FOLLOWING STANDARDS...  
 44. THE PART MUST MEET FOLLOWING STANDARDS...  
 45. THE PART MUST MEET FOLLOWING STANDARDS...  
 46. THE PART MUST MEET FOLLOWING STANDARDS...  
 47. THE PART MUST MEET FOLLOWING STANDARDS...  
 48. THE PART MUST MEET FOLLOWING STANDARDS...  
 49. THE PART MUST MEET FOLLOWING STANDARDS...  
 50. THE PART MUST MEET FOLLOWING STANDARDS...  
 51. THE PART MUST MEET FOLLOWING STANDARDS...  
 52. THE PART MUST MEET FOLLOWING STANDARDS...  
 53. THE PART MUST MEET FOLLOWING STANDARDS...  
 54. THE PART MUST MEET FOLLOWING STANDARDS...  
 55. THE PART MUST MEET FOLLOWING STANDARDS...  
 56. THE PART MUST MEET FOLLOWING STANDARDS...  
 57. THE PART MUST MEET FOLLOWING STANDARDS...  
 58. THE PART MUST MEET FOLLOWING STANDARDS...  
 59. THE PART MUST MEET FOLLOWING STANDARDS...  
 60. THE PART MUST MEET FOLLOWING STANDARDS...  
 61. THE PART MUST MEET FOLLOWING STANDARDS...  
 62. THE PART MUST MEET FOLLOWING STANDARDS...  
 63. THE PART MUST MEET FOLLOWING STANDARDS...  
 64. THE PART MUST MEET FOLLOWING STANDARDS...  
 65. THE PART MUST MEET FOLLOWING STANDARDS...  
 66. THE PART MUST MEET FOLLOWING STANDARDS...  
 67. THE PART MUST MEET FOLLOWING STANDARDS...  
 68. THE PART MUST MEET FOLLOWING STANDARDS...  
 69. THE PART MUST MEET FOLLOWING STANDARDS...  
 70. THE PART MUST MEET FOLLOWING STANDARDS...  
 71. THE PART MUST MEET FOLLOWING STANDARDS...  
 72. THE PART MUST MEET FOLLOWING STANDARDS...  
 73. THE PART MUST MEET FOLLOWING STANDARDS...  
 74. THE PART MUST MEET FOLLOWING STANDARDS...  
 75. THE PART MUST MEET FOLLOWING STANDARDS...  
 76. THE PART MUST MEET FOLLOWING STANDARDS...  
 77. THE PART MUST MEET FOLLOWING STANDARDS...  
 78. THE PART MUST MEET FOLLOWING STANDARDS...  
 79. THE PART MUST MEET FOLLOWING STANDARDS...  
 80. THE PART MUST MEET FOLLOWING STANDARDS...  
 81. THE PART MUST MEET FOLLOWING STANDARDS...  
 82. THE PART MUST MEET FOLLOWING STANDARDS...  
 83. THE PART MUST MEET FOLLOWING STANDARDS...  
 84. THE PART MUST MEET FOLLOWING STANDARDS...  
 85. THE PART MUST MEET FOLLOWING STANDARDS...  
 86. THE PART MUST MEET FOLLOWING STANDARDS...  
 87. THE PART MUST MEET FOLLOWING STANDARDS...  
 88. THE PART MUST MEET FOLLOWING STANDARDS...  
 89. THE PART MUST MEET FOLLOWING STANDARDS...  
 90. THE PART MUST MEET FOLLOWING STANDARDS...  
 91. THE PART MUST MEET FOLLOWING STANDARDS...  
 92. THE PART MUST MEET FOLLOWING STANDARDS...  
 93. THE PART MUST MEET FOLLOWING STANDARDS...  
 94. THE PART MUST MEET FOLLOWING STANDARDS...  
 95. THE PART MUST MEET FOLLOWING STANDARDS...  
 96. THE PART MUST MEET FOLLOWING STANDARDS...  
 97. THE PART MUST MEET FOLLOWING STANDARDS...  
 98. THE PART MUST MEET FOLLOWING STANDARDS...  
 99. THE PART MUST MEET FOLLOWING STANDARDS...  
 100. THE PART MUST MEET FOLLOWING STANDARDS...

Part No.	Qty	Part No.	Part Name	Part No.	Part Name
1	1	82657-11300	ANTENNA ASSY - DNS PE DR D/S RH	1	82657-11300
2	1	82657-11300	ANTENNA ASSY - DNS PE DR D/S LH	1	82657-11300





Attachment 1:

Product: NFC Door Handle

Model: HH4

FCC ID: IYZHH4

IC: 2701A-HH4

Warning sentence for FCC:

Changes or modifications to this equipment not expressly approved by the party responsible for compliance could void the user's authority to operate the equipment.

This device complies with Part 15 of the FCC rules. Operation is subject to the following two conditions: (1) this device may not cause harmful interference, and (2) this device must accept any interference received, including interference that may cause undesired operation. Privacy of communications may not be ensured when using this device.

Warning sentence for ISED:

This device complies with Industry Canada licence-exempt RSS standard(s):  
Operation is subject to the following Two conditions:(1) this device may not cause interference, and (2) this device must accept any interference, including interference that may cause undesired operation of the device.

Le présent appareil est conforme aux CNR d'Industrie Canada applicables aux appareils radio exempts de licence. L'exploitation est autorisée aux deux conditions suivantes : (1) l'appareil ne doit pas produire de brouillage, et (2) l'utilisateur de l'appareil doit accepter tout brouillage radioélectrique subi, même si le brouillage est susceptible d'en compromettre le fonctionnement.