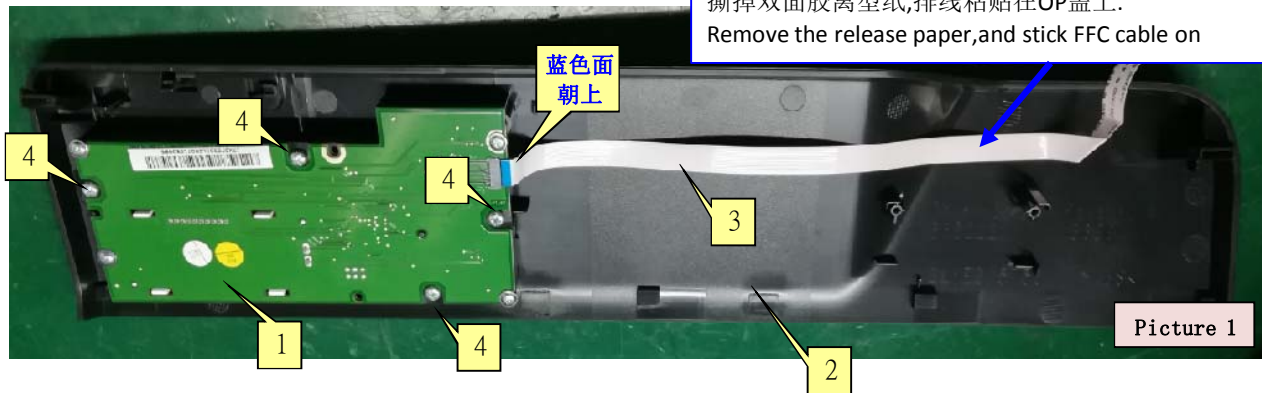


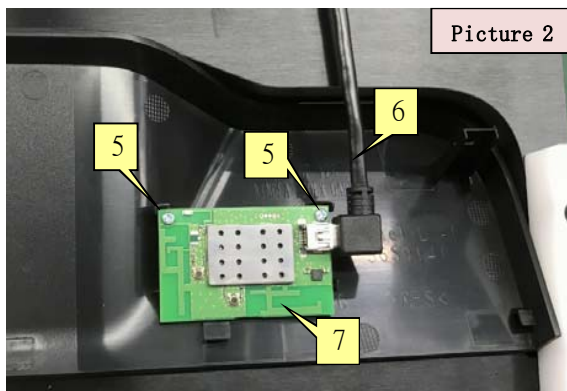
- 取OP盖与OP按键模组组装在一起，用4颗螺丝<28-01427-00A>固定。
- 取OP排线插入OP PCBA接头上。
- Assembly <Cover,Op > on <Frame,Button OP>,use 4screw <28-01427-00A> fasten it (torque force: 4.0kfg.cm) as picture 1.
- Insert FFC cable in OP PCBA connector as show picture 1.

撕掉双面胶离型纸,排线粘贴在OP盖上。  
 Remove the release paper,and stick FFC cable on



Picture 1

- 取<无线网卡线>插到<无线网卡>上，再将<无线网卡>组装到OP盖上，用2颗螺丝(88B1301)固定。
- Cable,wifi insert into Wireless Card,then assembly them on OP Cover, use 2 screw (88B1301)fix it.



Picture 2

- 将保护膜贴于镜片上。

将保护膜贴于镜片上  
 Stick LCD Protetive film on LCD surface



Picture 3

**Model: 540A-LM OP**  
**产品别: Gold-LM OP**

**Station:S16-3**  
**作业别:OP3**

**Install Button**  
**按键组装**

**36S2330**



物料号码		物料名称	数量
P/N		Name & Description	Qty
1	52-10129-00A	Assy,Operator Panel	1
	36S2222	OP按键模组	
2	54-16489-00A	Cover,OP	1
	36S2221	OP 盖	
3	23-01026-00A	FFC cable	1
	36S5047	OP 排线	
4	28-01427-00A	Screw,M3.0 x 1.50 x 8	4
	88B1313	螺丝	
5	28-01476-00A	Screw,M3.0 x 1.50 x 8	2
	88B1301	螺丝(用于无线网卡)	
6	23-01069-00A	Cable,wifi 无线网卡线	1
	36S3417	For(36SC120;36SC130 36SC220;36SC230)	
7	33-00489-00A	无线网卡 Wireless Card	1
	27X1100	For(36SC120;36SC130 36SC220;36SC230)	

Fixtures/Tools/Equipment		Qty	Spec
1	Screw driver	1	4.0±0.5kgf/cm
2	540A-L OP Cover fixture	1	

**Operation Specs**

版次 VER	日期 DATE	制作 PREPARE	MFG	QRA	ENG

Revision: