

Lexmark LEX-M08-001 External Photographs Rev 0.1
FCC ID: IYLLEXM08001
IC: 2376A-LEXM08001

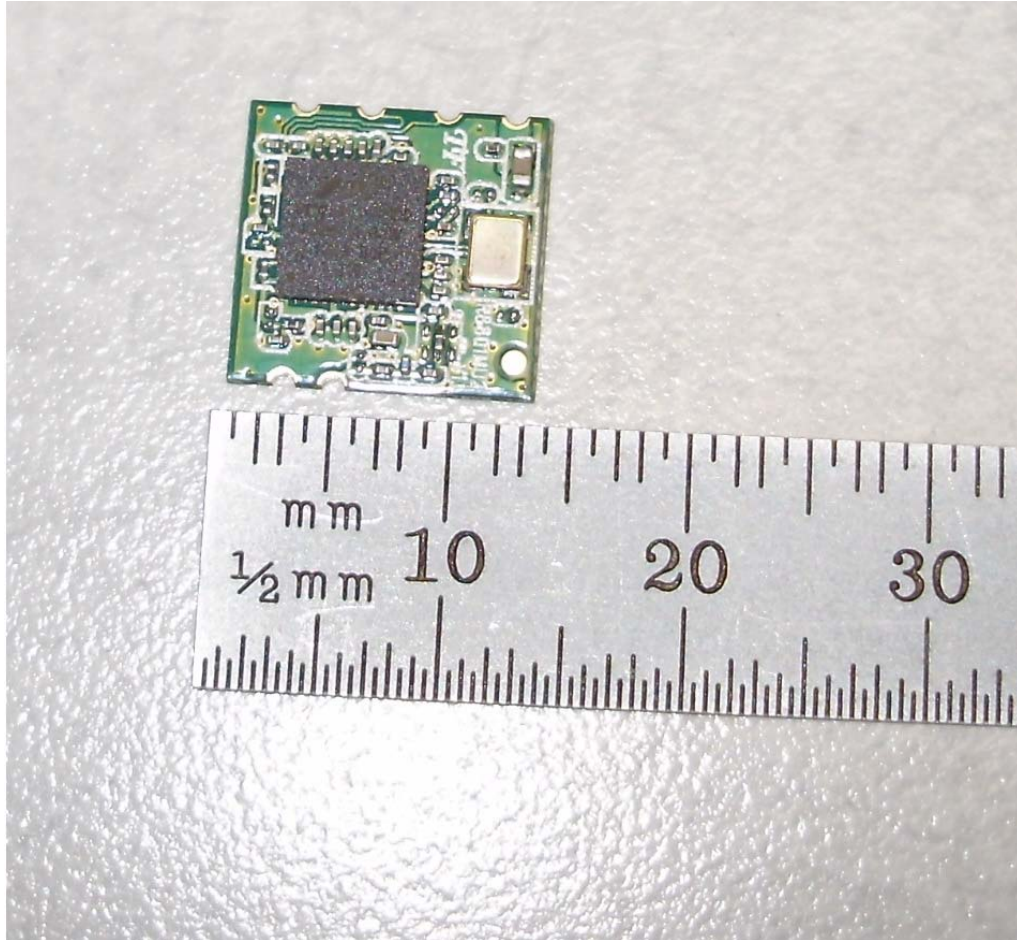


Photo 1 - LEX-M08-001 Module External Top View – shown without label

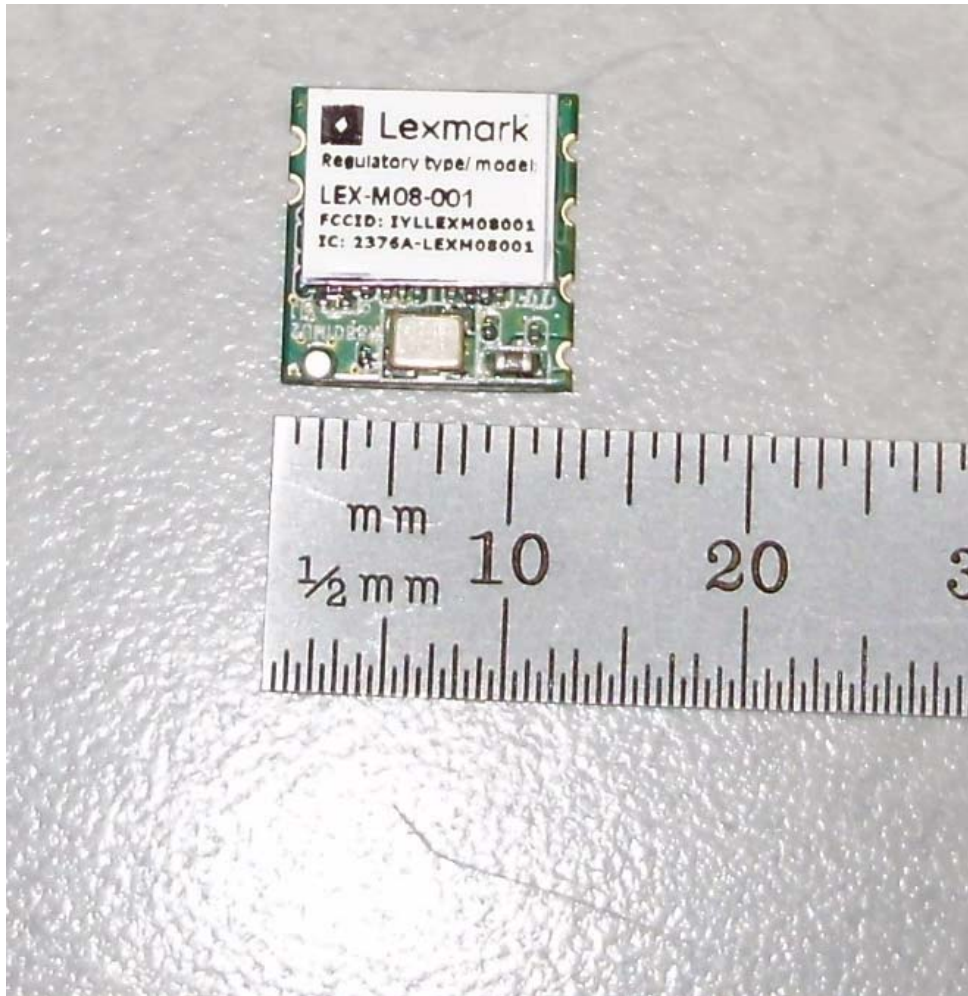


Photo 2 – LEX-M08-001 Module External Top View – shown with label

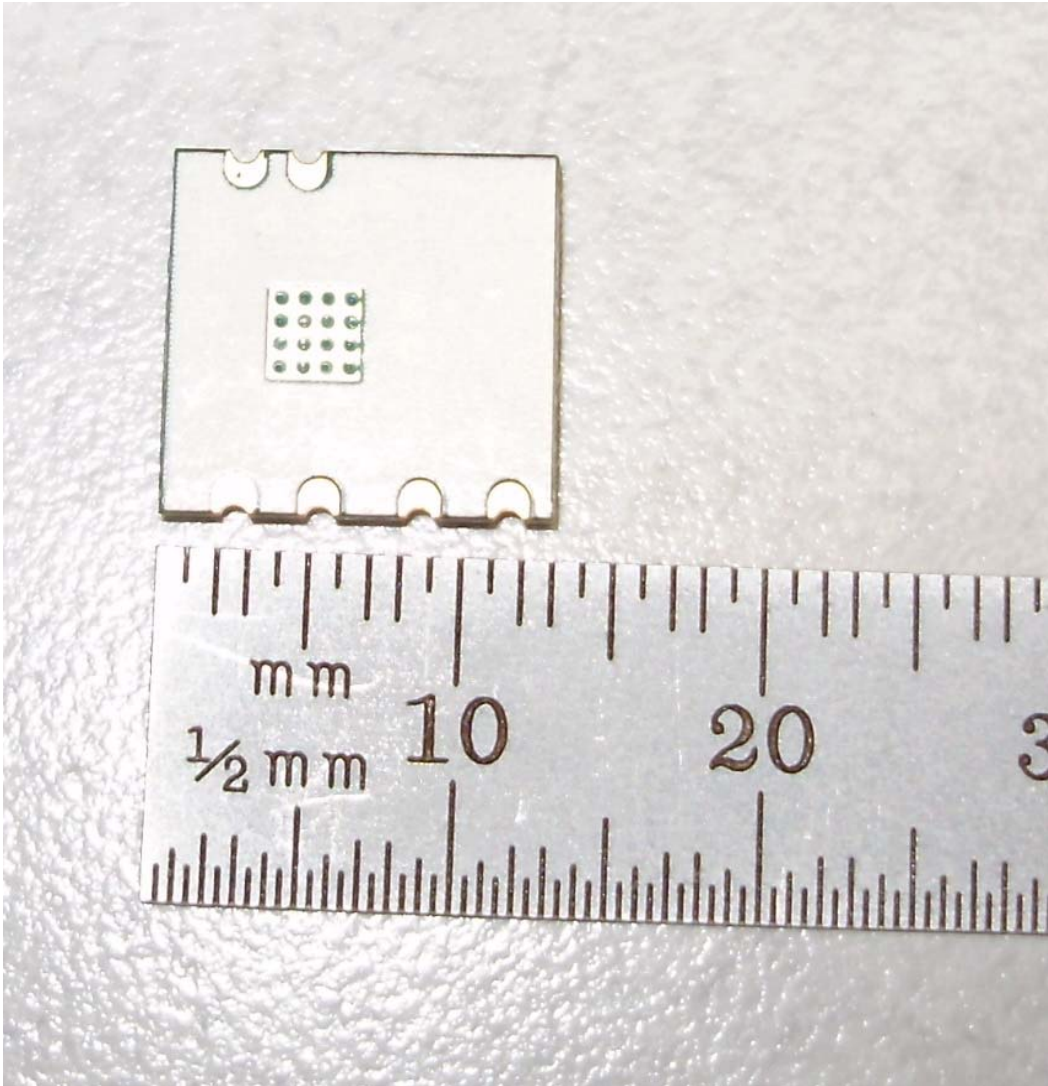


Photo 3 – LEX-M08-001 Module External Solder Side

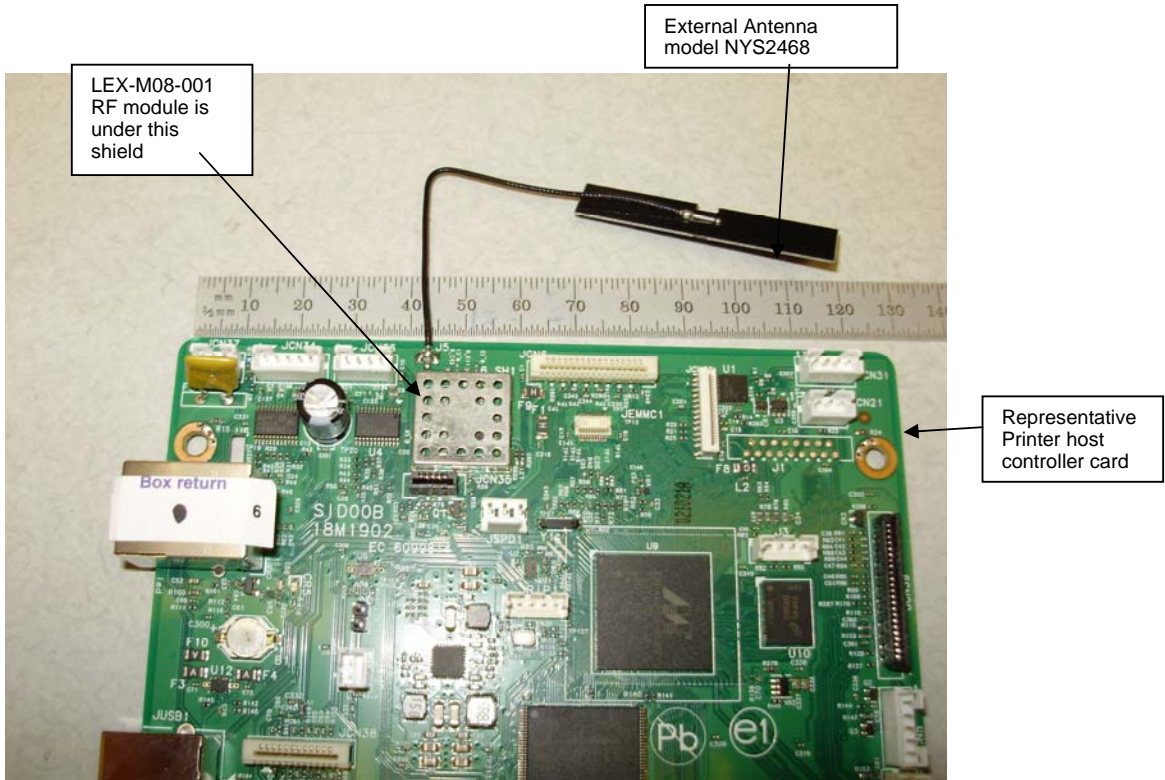


Photo 4 shows the LEX-M08-001 module soldered to a representative host controller card under the external shield soldered over the LEX-M08-001 module. The External Antenna model NYS2468 is shown soldered to the host PCD and is connected through impedance matching components and traces to the LEX-M08-001 module.

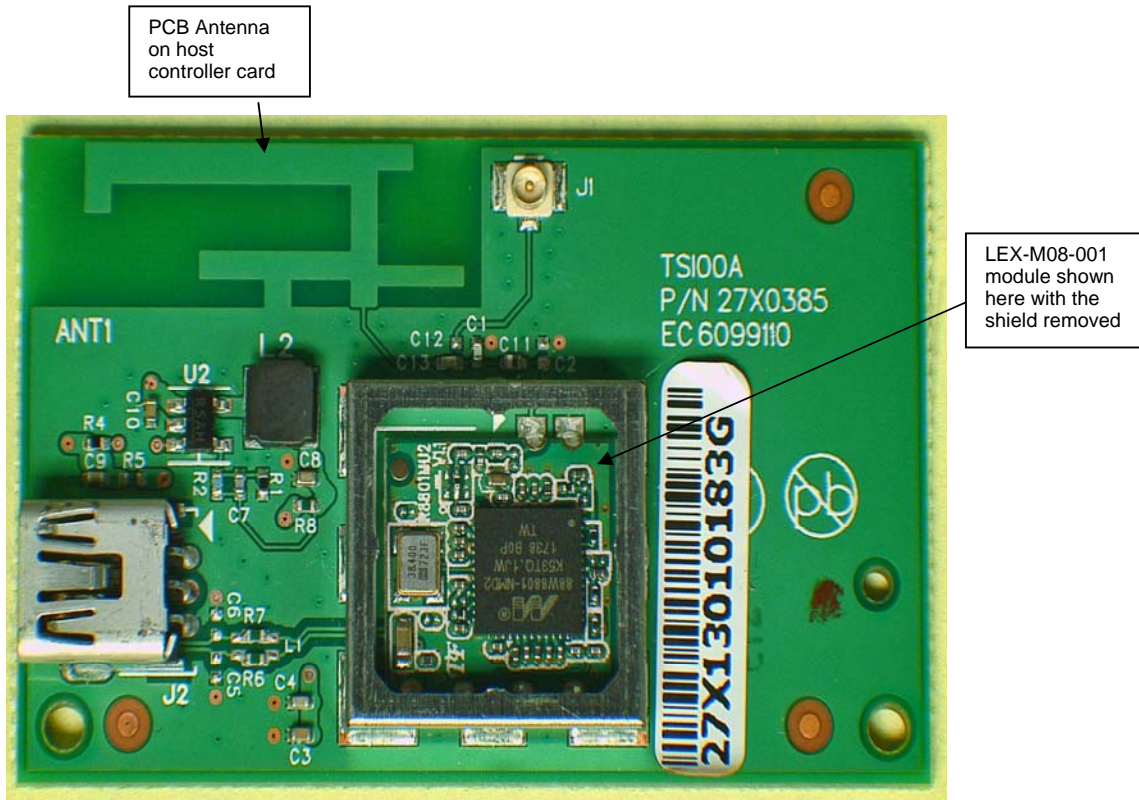


Photo 5 shows a representative host controller card with a PCB antenna connected to the LEX-M08-001 module. The host PCB has impedance matching components and traces. Note that the host PCB also contains a shield over the entire LEX-M08-001 module as show on the following page.

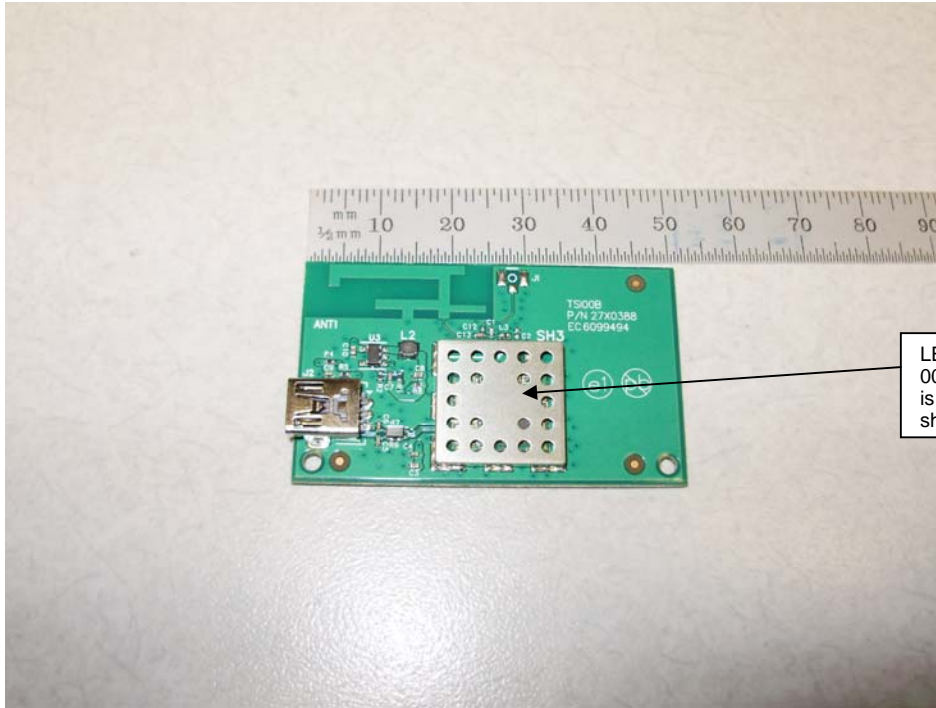


Photo 6 showing LEX-M08-001 module on host PCB under a shield.

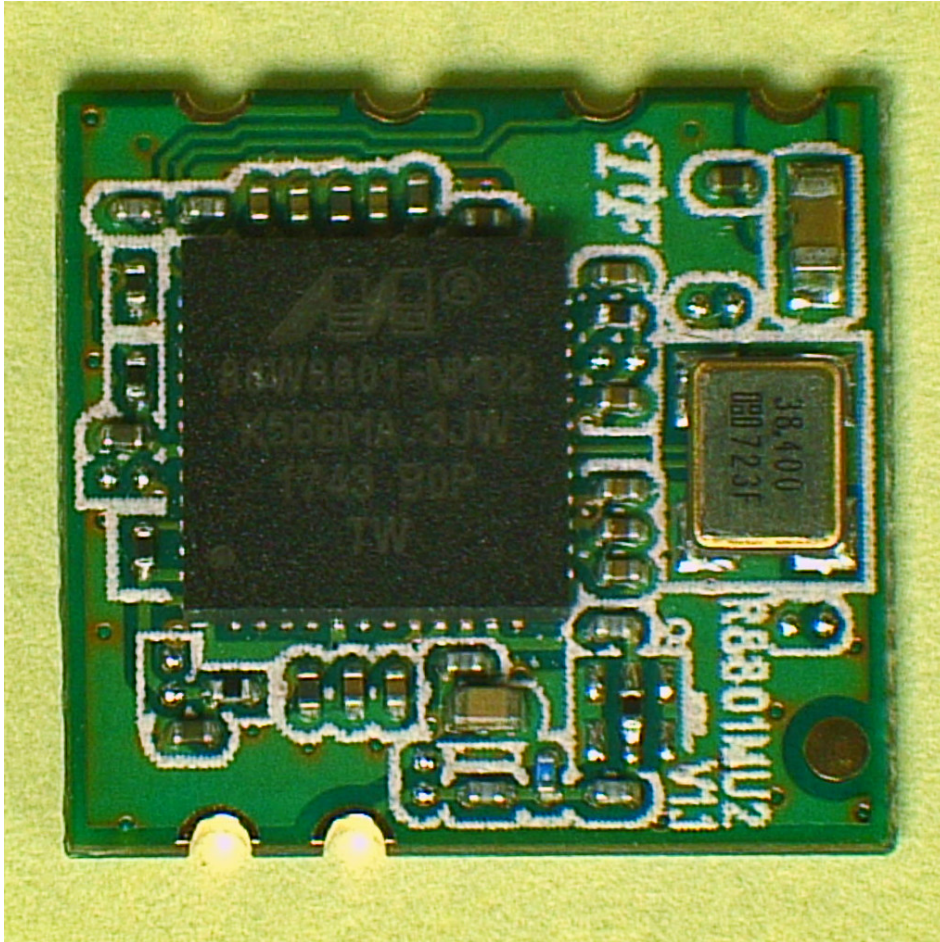


Photo 7 close up of LEX-M08-001 module component side without label

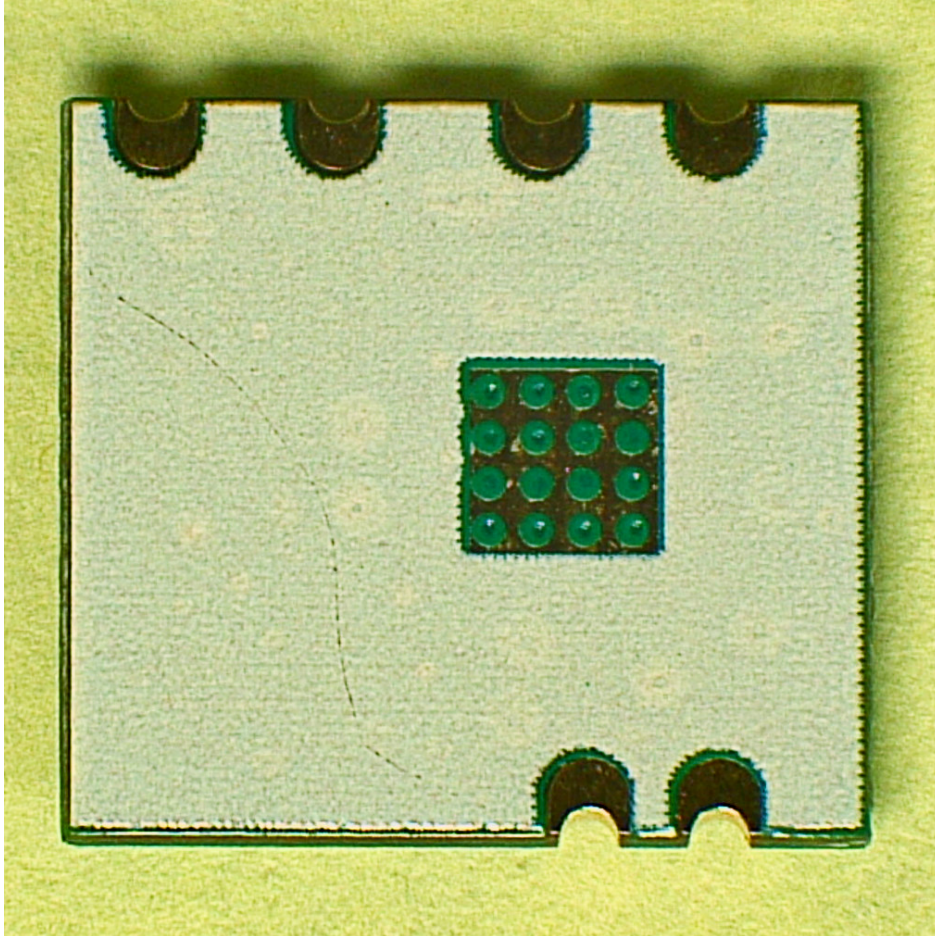


Photo 8 of LEX-M08-001 module solder side