

LEXMARK INTERNATIONAL INC.

TRADE NAME: Lexmark C920 / C920n Printer

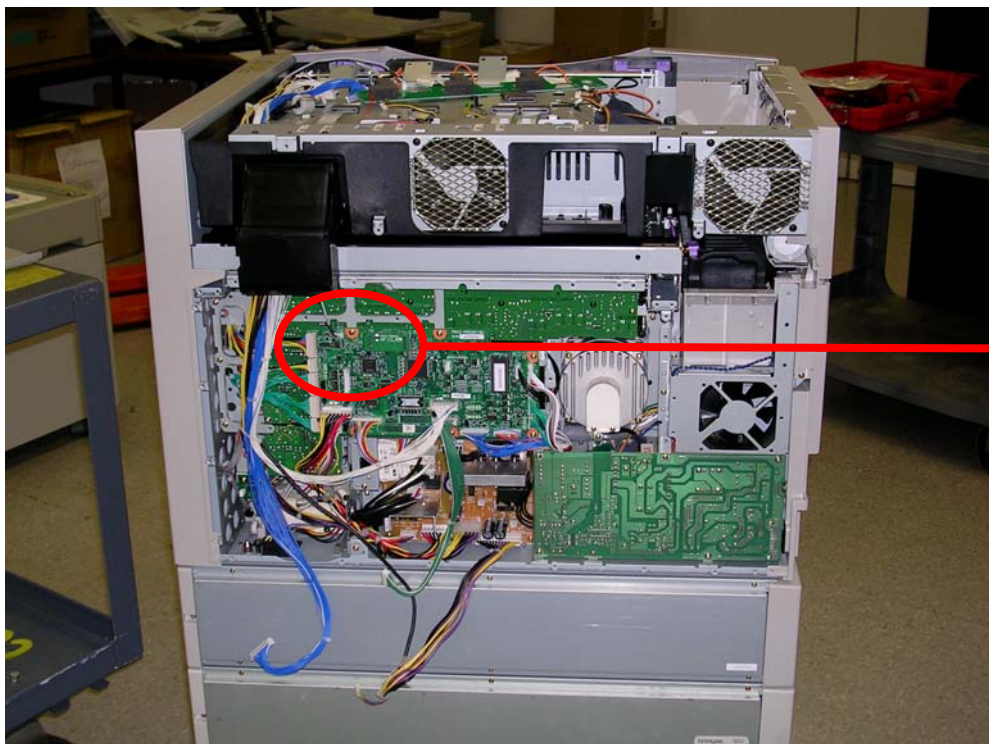
TYPE/MODEL NUMBER: Type/Model: 5056-000, -010, and -030

PRINTER PHOTOS

LEXMARK CONFIDENTIAL UNTIL ANNOUNCED BY LEXMARK



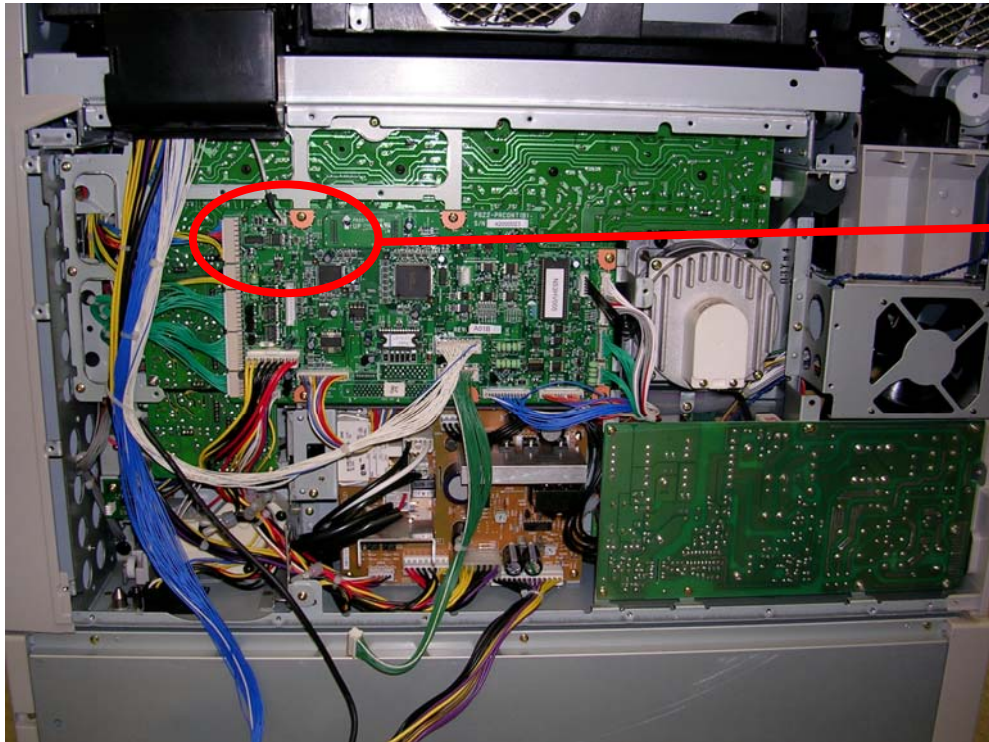
Front view of printer



See following photos for detail

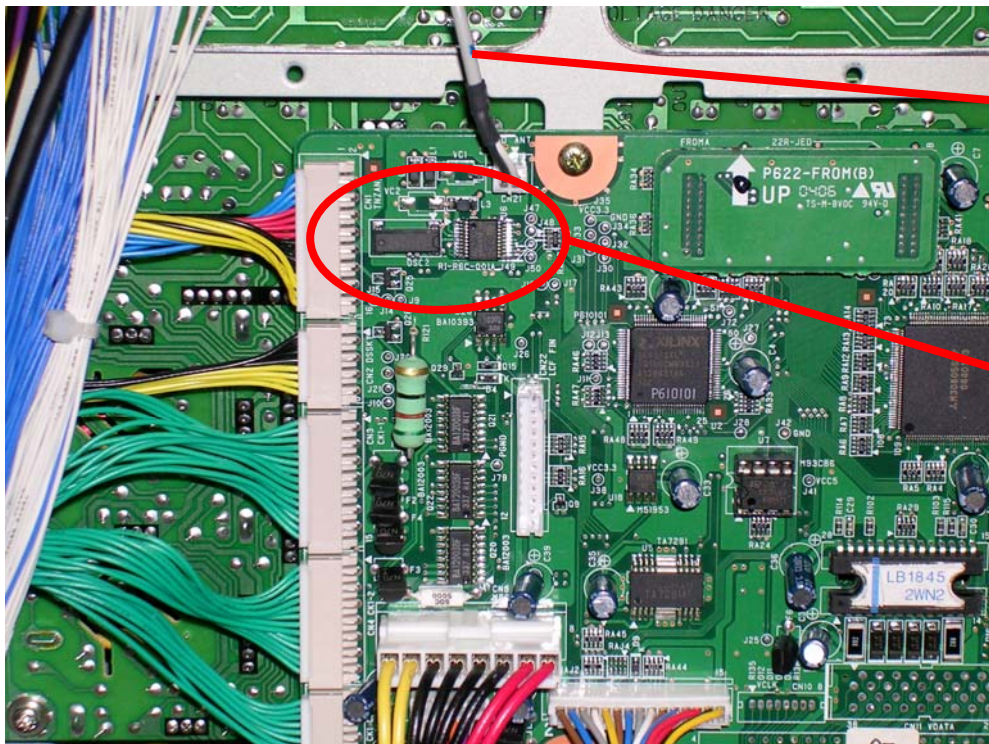
Rear view of printer

LEXMARK CONFIDENTIAL UNTIL ANNOUNCED BY LEXMARK



See next photo for detailed view

Detailed view of engine controller card

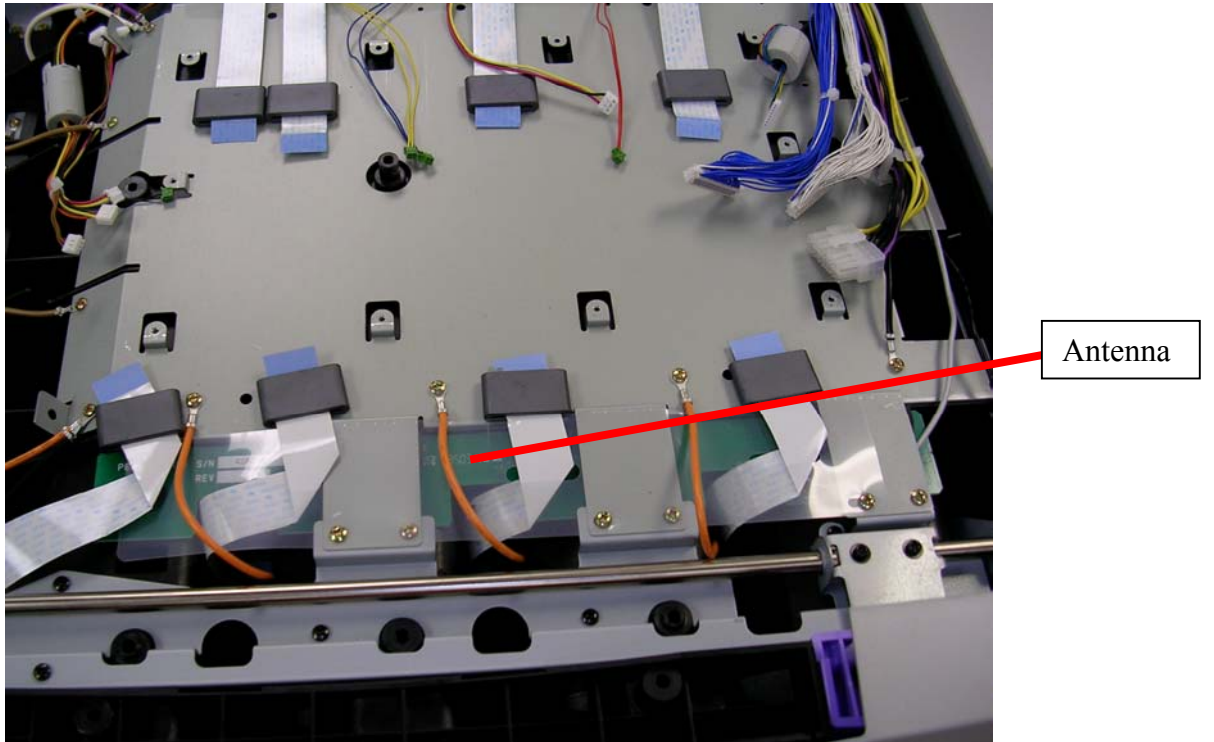


Coaxial cable to antenna

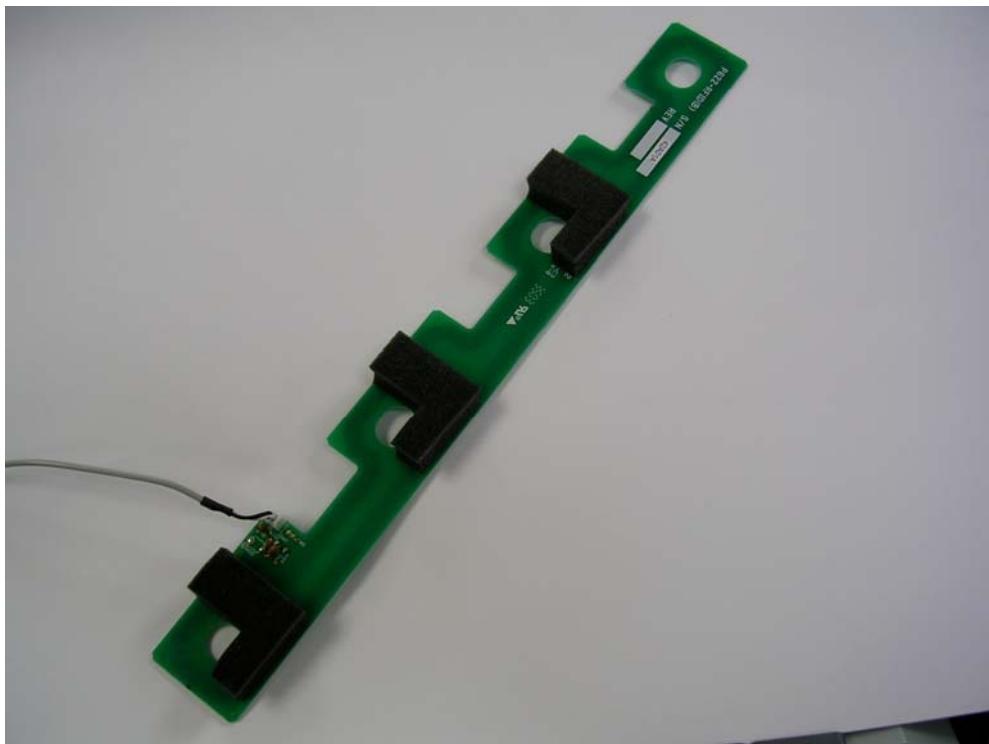
RFID components

Detailed view of RFID Transceiver IC on controller card

LEXMARK CONFIDENTIAL UNTIL ANNOUNCED BY LEXMARK



View of RFID antenna with printheads removed



Detailed front view of RFID antenna

LEXMARK CONFIDENTIAL UNTIL ANNOUNCED BY LEXMARK

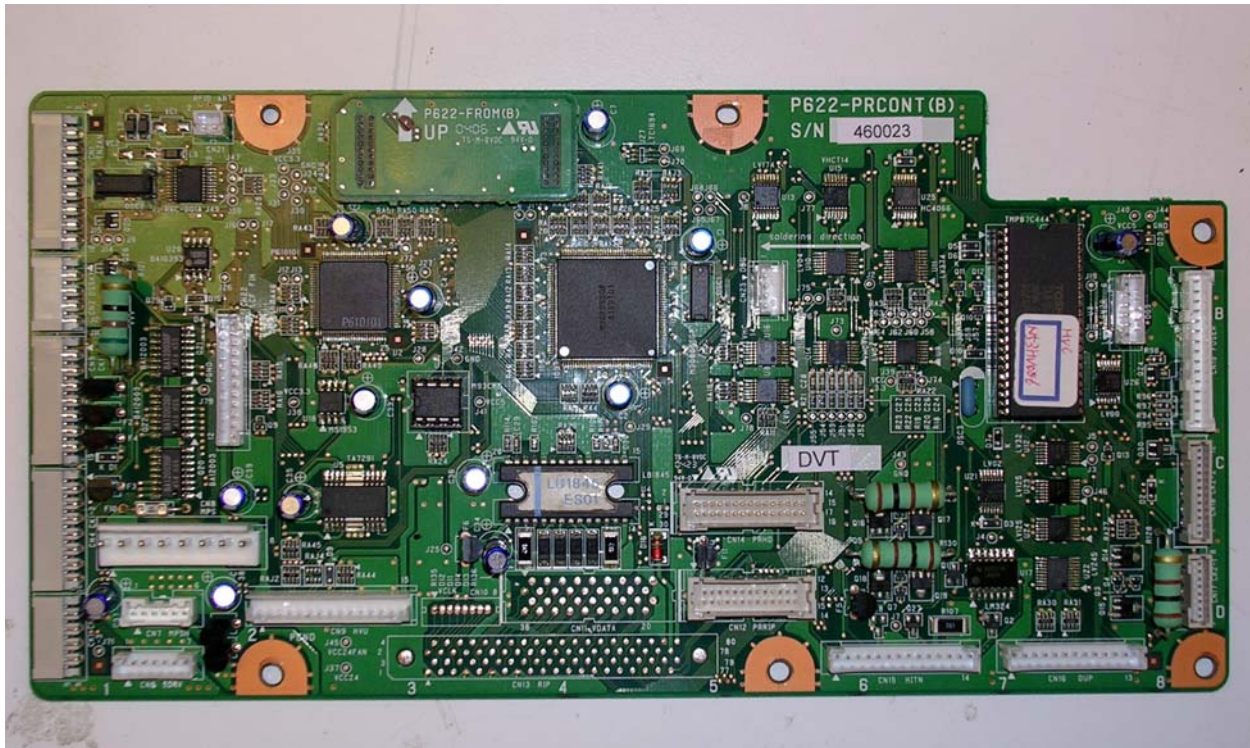


Detailed rear view of RFID antenna

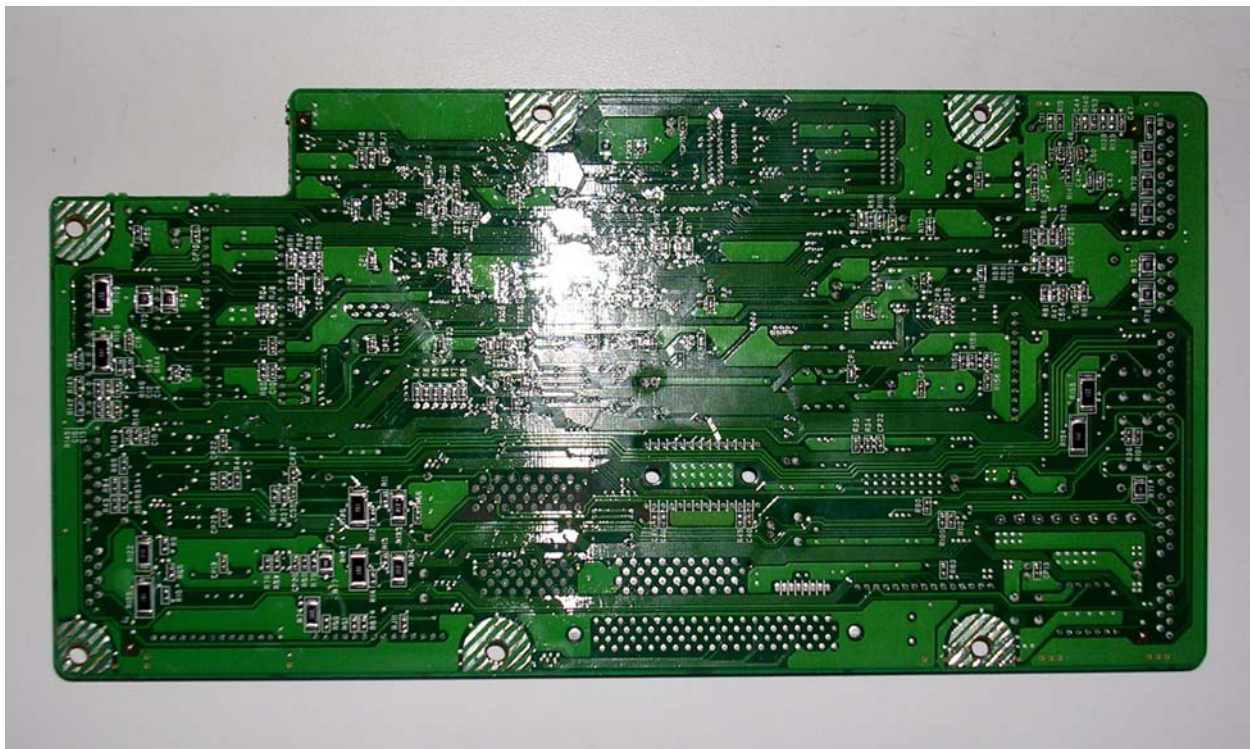


View of shielded cable between engine control board and antenna

LEXMARK CONFIDENTIAL UNTIL ANNOUNCED BY LEXMARK



Front view of printed circuit board with RFID circuitry



Rear view of printed circuit board with RFID circuitry

LEXMARK CONFIDENTIAL UNTIL ANNOUNCED BY LEXMARK



Toner cartridge



Transponder inlay from toner cartridge