

FCC TEST REPORT

FCC ID : IYF2CHFM100-27

Applicant : **Hobbico Inc.**
2904 Reasarch Road, champaign, ILLinois 61826-9021 America

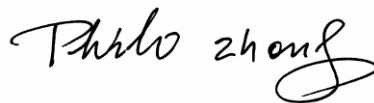
Equipment Under Test (EUT) :

Product description : Radio control system
Model No. : T2-27F-W
Operation Frequency : 27.045MHz and 27.195MHz
Operation Mode : FM

Standards : FCC 15 Subpart C Paragraph 15.227

Date of Test : July 25, 2007

Test Engineer : Tiger Su

Reviewed By : 

PERPARED BY:

Waltek Services (Shenzhen) Co., Ltd.

8C, West Tower, Aidi Building, No.5003 Binhe Rd, Futian District, Shenzhen518045,
Guangdong, China.

Tel: 86-755-83551033

Fax: 86-755-83552400

2 Contents

	Page
1 COVER PAGE.....	1
2 CONTENTS.....	2
3 TEST SUMMARY.....	5
4 GENERAL INFORMATION.....	6
4.1 CLIENT INFORMATION	6
4.2 GENERAL DESCRIPTION OF E.U.T.....	6
4.3 DETAILS OF E.U.T.	6
4.4 DESCRIPTION OF SUPPORT UNITS	6
4.5 STANDARDS APPLICABLE FOR TESTING.....	6
4.6 TEST FACILITY.....	7
4.7 TEST LOCATION.....	7
5 EQUIPMENT USED DURING TEST	8
6 CONDUCTED EMISSION TEST	10
6.1 TEST EQUIPMENT.....	10
6.2 TEST PROCEDURE	10
6.3 CONDUCTED TEST SETUP	11
6.4 EUT OPERATING CONDITION	11
6.5 CONDUCTED EMISSION LIMITS	12
6.6 CONDUCTED EMISSION TEST RESULT.....	12
7 RADIATION EMISSION TEST.....	13
7.1 TEST EQUIPMENT.....	13
7.2 MEASUREMENT UNCERTAINTY.....	13
7.3 TEST PROCEDURE	13
7.4 RADIATED TEST SETUP.....	14
7.5 SPECTRUM ANALYZER SETUP.....	15
7.6 CORRECTED AMPLITUDE & MARGIN CALCULATION	15
7.7 SUMMARY OF TEST RESULTS.....	15
7.8 EUT OPERATING CONDITION	16
7.9 RADIATED EMISSIONS LIMIT.....	16
7.10 RADIATED EMISSIONS TEST RESULT.....	17
7.11 RADIATED EMISSION TEST DATA.....	17
8 OCCUPIED BANDWIDTH	20
8.1 TEST PROCEDURE	20
9 PHOTOGRAPHS OF TESTING.....	22
9.1 RADIATION EMISSION TEST VIEW	22
10 PHOTOGRAPHS - CONSTRUCTIONAL DETAILS	23
10.1 EUT - FRONT VIEW	23
10.2 EUT - BACK VIEW.....	23
10.3 PCB- FRONT VIEW	24

10.4 PCB- BACK VIEW.....24

11 FCC ID LABEL.....25

3 Test Summary

Test	Test Requirement	Test Method	Class / Severity	Result
Radiated Emission (25MHz to 1GHz)	FCC PART 15: 2003	ANSI C63.4: 2003	Class B	PASS
Conducted Emission (150KHz to 30MHz)	FCC PART 15: 2003	ANSI C63.4: 2003	Class B	N/A

4 General Information

4.1 Client Information

Applicant: **Hobbico Inc.**
Address of Applicant: 2904 Research Road, champaign, ILLinois 61826-9021 America

4.2 General Description of E.U.T.

Product description: Radio control system
Model No.: T2-27F-W

4.3 Details of E.U.T.

Power Supply: DC 9V Battery

4.4 Description of Support Units

The EUT has been tested as an independent device unit.

4.5 Standards Applicable for Testing

The customer requested FCC tests for a Radio control system. The standards used were FCC 15 Paragraph 15.227, Paragraph 15.205, Paragraph 15.209, Paragraph 15.31, Paragraph 15.33, Paragraph 15.35.

4.6 Test Facility

The test facility is recognized, certified, or accredited by the following organizations:

- **FCC – Registration No.: 101879**

Compliance Engineering Service (China) EMC Laboratory has been registered and fully described in a report filed with the (FCC) Federal Communications Commission. The acceptance letter from the FCC is maintained in our files. Registration 101879, September 28, 2004.

4.7 Test Location

All Emissions tests were performed at:-

No. 6 Bldg. 35 Jin Ao Industry Technolog Yuan, Jukeng Rd., Da-Dhui-Keng Cun, Guan Lan Zhen, Bao An Qu, ShenZhen City, China 518110

5 Equipment Used during Test

DESCRIPTION	MFR	MODEL#	SERIAL #	LAST CAL.	CAL.DUE	Firmware	Software
AMPLIFIER	MITEQ	AW-1604-3000	1093584	2007/06/10	2008/06/09	N/A	N/A
ANTENNA	EMCO	3142B	9910-1436	2007/06/10	2008/06/09	N/A	N/A
BILOG ANTENNA	SCHAFFNER	CBL6143	5082	2007/06/10	2008/06/09	N/A	N/A
Horn Antenna	ASA	NA	NA	2007/06/10	2008/06/09	N/A	N/A
Loop Antenna	R&S	6108	N/A	2007/06/10	2008/06/09	N/A	N/A
CABLE	TIME MICROWAVE	LMR-400	N-TYPE04	2007/06/10	2008/06/09	N/A	N/A
Spectrum Analyzer	Agilent	E7402A	MY42000139	2007/06/10	2008/06/09	N/A	N/A
EMI test Receiver	ROHDE&SCHWARZ	ESCI	1166.595K03	2007/02/09	2008/02/08	N/A	N/A
Signal Generator	Agilent	8648C	3847M01114	2007/02/09	2008/02/08	N/A	N/A

DESCRIPTION	MFR	MODEL#	SERIAL#	LAST CAL.	CAL. DUE	Firmware	Software
Receiver	R&S	ESPI3		2007/02/09	2008/02/08	Ver 3.32 SP2	Labview 5.0
LISN (EUT)	R&S	ENV216		2007/02/09	2008/02/08	N/A	N/A

LISN	EMCO	3825/2	8901-1459	2007/02/09	2008/02/08	N/A	N/A
SPECTRUM ANALYZER	ADVANT ENT	R3132	N02563	2007/06/10	2008/06/09	Ver F04	N/A

6 Conducted Emission Test

Product Name:	Radio control system
Test Requirement:	FCC Part15 Paragraph 15.207
Test Method:	Based on FCC Part15 Paragraph 15.207
Test Date:
Frequency Range:	150kHz to 30MHz
Class:	Class B
Detector:	Peak for pre-scan (9kHz Resolution Bandwidth) Quasi-Peak & Average if maximised peak within 6dB of Average Limit

6.1 Test Equipment

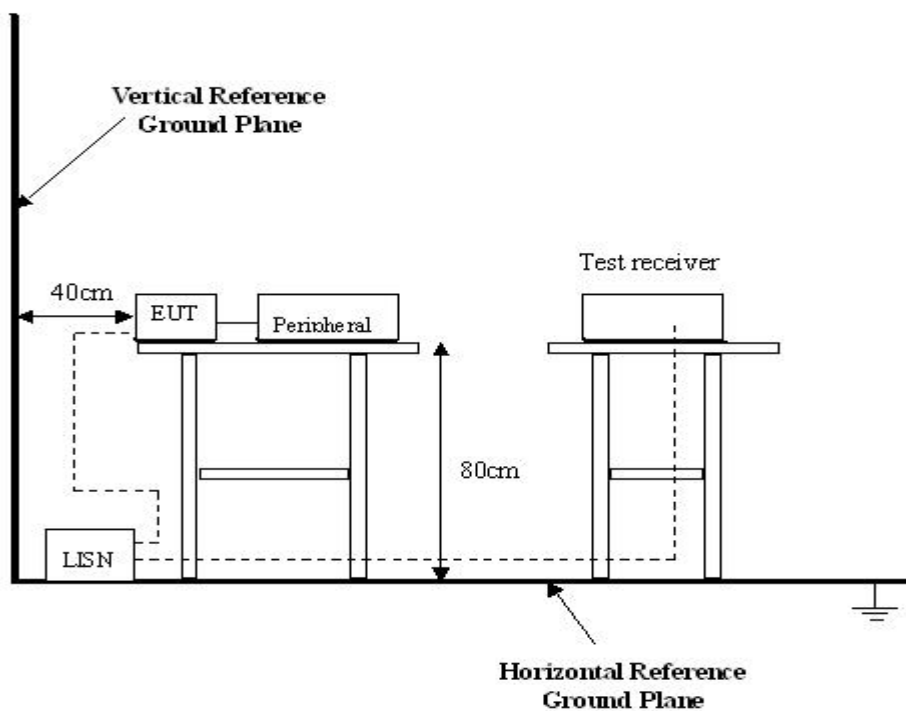
Please refer to Section 5 this report.

6.2 Test Procedure

1. The EUT was tested according to ANSI C63.4:2003. The frequency spectrum from 150kHz to 30MHz was investigated.
2. The maximised peak emissions from the EUT was scanned and measured for both the Live and Neutral Lines. Quasi-peak & average measurements were performed if peak emissions were within 6dB of the average limit line.

6.3 Conducted Test Setup

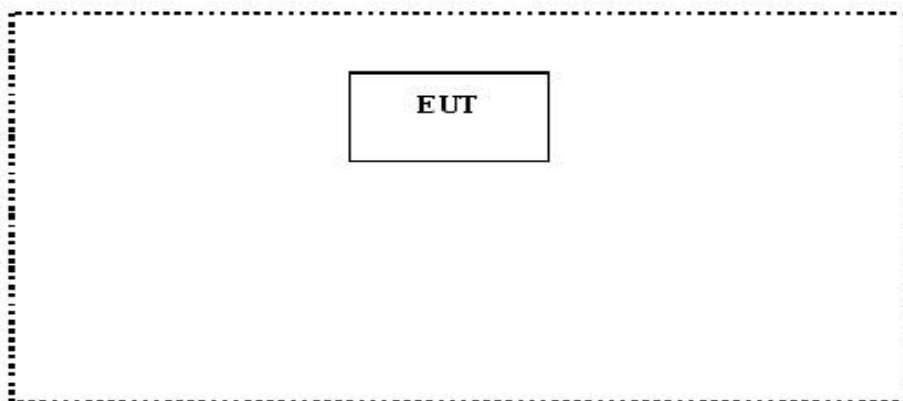
The conducted emission tests were performed using the setup accordance with the ANSI C63.4:2003, The specification used in this report was the FCC Part15 Paragraph 15.207 limits.



6.4 EUT Operating Condition

Operating condition is according to ANSI C63.4:2003.

- A. Setup the EUT and simulators as shown on follow.
- B. Enable RF signal and confirm EUT active.
- C. Modulate output capacity of EUT up to specification.



6.5 Conducted Emission Limits

66-56 dB μ V/m between 0.15MHz & 0.5MHz

56 dB μ V/m between 0.5MHz & 5MHz

60 dB μ V/m between 5MHz & 30MHz

Note: In the above limits, the tighter limit applies at the band edges.

6.6 Conducted Emission Test Result

Owing to the DC operation of EUT, this test is not performed.

7 Radiation Emission Test

Product Name:	Radio control system
Test Requirement:	FCC Part15 Paragraph 15.227
Test Method:	Based on FCC Part15 Paragraph 15.33
Test Date:	July 25, 2007
Frequency Range:	25MHz to 1GHz
Measurement Distance:	3m
Detector:	Peak for pre-scan (120kHz resolution bandwidth) Quasi-Peak if maximised peak within 6dB of limit

7.1 Test Equipment

Please refer to Section 5 this report.

7.2 Measurement Uncertainty

All measurements involve certain levels of uncertainties, especially in the field of EMC. The factors contributing to uncertainties are spectrum analyzer, cable loss, antenna factor calibration, antenna directivity, antenna factor variation with height, antenna phase center variation, antenna factor frequency interpolation, measurement distance variation, site imperfections, mismatch (average), and system repeatability.

Based on ANSI C63.4:2003, The Treatment of Uncertainty in EMC Measurements, the best estimate of the uncertainty of a radiation emissions measurement at CCS EMC Lab is +4.0 dB.

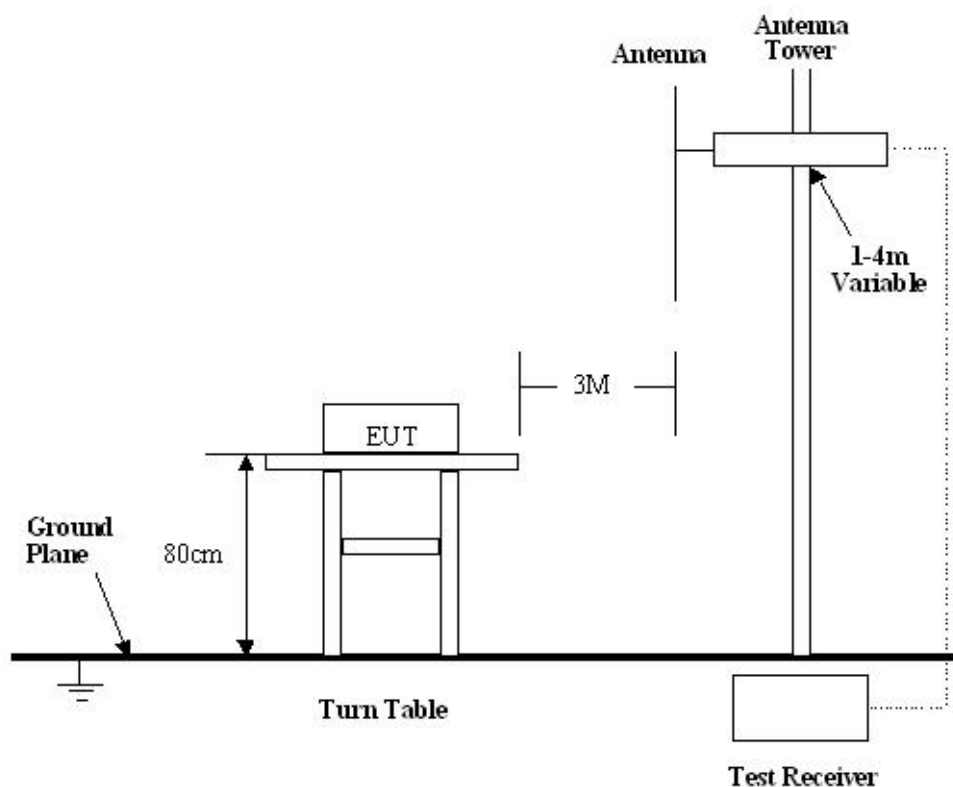
7.3 Test Procedure

1. For the radiated emissions test, since the EUT does not have a power source, there was no connection to AC outlets.
2. Maximizing procedure was performed on the six (6) highest emissions to ensure EUT is compliant with all installation combinations.
3. All data was recorded in the peak detection mode. Quasi-peak readings was performed only when an emission was found to be marginal (within -4 dB μ V of specification limits), and are distinguished with a "Qp" in the data table.
4. The EUT was under normal mode during the final qualification test and the configuration was used to represent the worst case results.

5. For below 30MHz, a loop antenna with its vertical plane is placed 3m from the EUT and rotated about its vertical axis for maximum response at each azimuth about the EUT. And the centre of the loop shall be 1m above the ground.
6. The device was rotated through three orthogonal axes to determine which attitude and configuration produce the highest emission during measurement.

7.4 Radiated Test Setup

The radiated emission tests were performed in the 3m Semi- Anechoic Chamber test site, using the setup accordance with the ANSI C63.4:2003, The specification used in this report was the FCC Part15 Paragraph 15.209, Paragraph 15.227 limits.



7.5 Spectrum Analyzer Setup

According to FCC Part15 Paragraph 15.227 Rules, the system was tested to 1000 MHz.

Start Frequency25 MHz
 Stop Frequency1000 MHz
 Sweep Speed Auto
 IF Bandwidth100 kHz
 Video Bandwidth1 MHz
 Quasi-Peak Adapter Bandwidth120 kHz
 Quasi-Peak Adapter Mode.....Normal
 Resolution Bandwidth1MHz

7.6 Corrected Amplitude & Margin Calculation

The Corrected Amplitude is calculated by adding the Antenna Factor and Cable Factor, and subtracting the Amplifier Gain from the Amplitude reading. The basic equation is as follows:

$$\text{Corr. Ampl.} = \text{Indicated Reading} + \text{Antenna Factor} + \text{Cable Factor} - \text{Amplifier Gain}$$

The “**Margin**” column of the following data tables indicates the degree of compliance with the applicable limit. For example, a margin of -7dBµV means the emission is 7dBµV below the maximum limit for Class B. The equation for margin calculation is as follows:

$$\text{Margin} = \text{Corr. Ampl.} - \text{Class B Limit}$$

7.7 Summary of Test Results

According to the data in section 7.10, the EUT complied with the FCC Part15 Paragraph 15.227 standards.

7.8 EUT Operating Condition

Same as section 6.4 of this report.

7.9 Radiated Emissions Limit

A. FCC Part 15 subpart C Paragraph 15.227 Limit

Fundamental Frequency(MHZ)	Field Strength of Fundamental
	dBuV/m
27.045	80
27.195	80

Note:(1) Distance refers to the distance in meters between the measuring instrument antenna and the closed point of any part of the device or system.

B. Frequencies in restricted band are complied to limit on Paragraph 15.209

Frequency(MHZ)	Distance(m)	Field strength(dBuV/m)
30-88	3	40.0
88-216	3	43.5
216-960	3	46.0
Above 960	3	54.0

Note: (1) $RF\ Voltage(dBuV) = 20 \log RF\ Voltage(uV)$

(2) In the Above Table, the tighter limit applies at the band edges.

(3) Distance refers to the distance in meters between the measuring instrument antenna.

7.10 Radiated Emissions Test Result

Formula of conversion factors:the field strength at 3m was established by adding
The meter reading of the spectrum analyer (which is set to read in units of dBuV)
To the antenna correction factor supplied by the antenna manufacturer. The antenna
Correction factors are stared in terms of dB.The gain of the pressletor was accounted
For in the spectrum analyser meter reading.

Example:

Freq(MHz) Meter Reading +ACF=FS

33 20dBuV+10.36dB=30.36dBuV/m @3m

7.11 Radiated Emission Test Data

Test Item:	Radiated Emission Test Data
Test Voltage:	DC 9V Battery
Test Mode:	TX On
Temperature:	24 °C
Humidity:	52%RH
Test Result:	PASS

TX: 27.045MHz

Frequency (MHz)	Antenna Polarization	Emission Level (dBuV/m)	FCC 15 Subpart C Limit (dBuV/m)	Margin (dB)	Antenna Height (m)	Turntable Angle (°)
27.045	Vertical	51.9	80.0	28.1	1.5	60
27.045	Horizontal	51.6	80.0	28.4	1.5	90
54.090	Horizontal	24.5	40.0	15.5	1.5	120
81.135	Horizontal	25.4	40.0	14.6	1.8	120
108.180	Horizontal	26.3	43.5	17.2	1.8	120
135.225	Horizontal	25.8	43.5	17.7	1.0	180
162.270	Horizontal	26.7	43.5	16.8	1.2	45
189.315	Horizontal	26.1	43.5	17.4	1.5	90
216.360	Horizontal	28.3	46.0	17.7	1.2	60
243.405	Horizontal	27.7	46.0	18.3	1.0	120
270.450	Horizontal	27.8	46.0	18.2	1.5	45
297.495	Horizontal	28.6	46.0	17.4	1.8	90
54.090	Vertical	24.6	40.0	15.4	1.5	45
81.135	Vertical	25.4	40.0	14.6	1.8	90
108.180	Vertical	25.1	43.5	18.4	1.5	180
135.225	Vertical	26.4	43.5	17.1	1.2	120
162.270	Vertical	25.9	43.5	17.6	1.0	45
189.315	Vertical	26.6	43.5	16.9	1.5	60
216.360	Vertical	29.4	46.0	16.6	1.8	90
243.405	Vertical	28.9	46.0	17.1	1.8	90
270.450	Vertical	28.6	46.0	17.4	1.8	120
297.495	Vertical	27.7	46.0	18.3	1.5	90

TX: 27.195MHz

Frequency (MHz)	Antenna Polarization	Emission Level (dBuV/m)	FCC 15 Subpart C Limit (dBuV/m)	Margin (dB)	Antenna Height (m)	Turntable Angle (°)
27.195	Vertical	52.7	80.0	27.3	1.8	45
27.195	Horizontal	51.6	80.0	28.4	1.5	120
54.390	Horizontal	25.6	40.0	14.4	1.8	90
81.585	Horizontal	24.2	40.0	15.8	1.5	60
108.78	Horizontal	27.7	43.5	15.8	1.5	180
135.975	Horizontal	28.7	43.5	14.8	1.2	45
163.170	Horizontal	27.9	43.5	15.6	1.5	90
190.365	Horizontal	28.2	43.5	15.3	1.8	45
217.560	Horizontal	29.1	46.0	16.9	2.0	120
244.755	Horizontal	28.4	46.0	17.6	1.8	60
271.950	Horizontal	29.0	46.0	17.0	1.2	180
299.145	Horizontal	29.9	46.0	16.1	1.9	120
54.390	Vertical	26.5	40.0	13.5	1.8	120
81.585	Vertical	25.9	40.0	14.1	1.8	60
108.78	Vertical	26.6	43.5	16.9	1.5	60
135.975	Vertical	26.7	43.5	16.8	1.5	90
163.170	Vertical	27.2	43.5	16.3	1.2	45
190.365	Vertical	28.4	43.5	15.1	1.8	120
217.560	Vertical	32.3	46.0	13.7	2.0	180
244.755	Vertical	31.9	46.0	27.3	2.0	120
271.950	Vertical	29.6	46.0	16.4	2.0	120
299.145	Vertical	29.9	46.0	16.1	1.8	60

8 Occupied Bandwidth

Rules of test :	FCC Part15.227
Test Date:	July 25, 2007
Test mode:	TX On
Temperature:	24 °C
Humidity:	52%RH

8.1 Test Procedure

1. The field strength of any emissions which appear outside of the band shall not exceed the general radiated emission limits in section 15.209.
2. The useful radiated emission form the EUT was detected by the spectrum analyser with peak detector.
3. The result has been complied with the 15.227 (b), see the following plot:

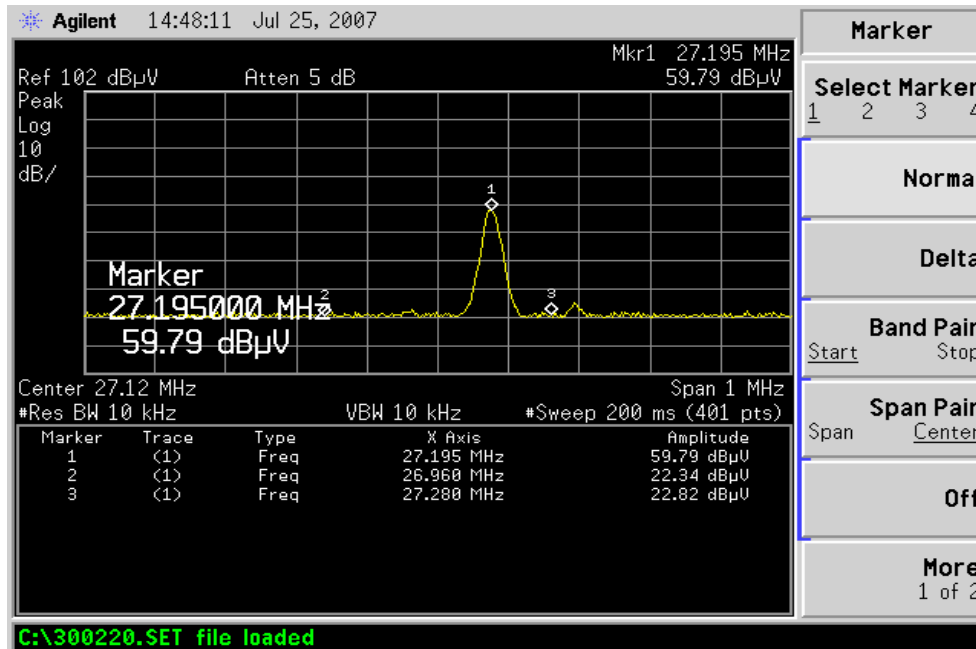
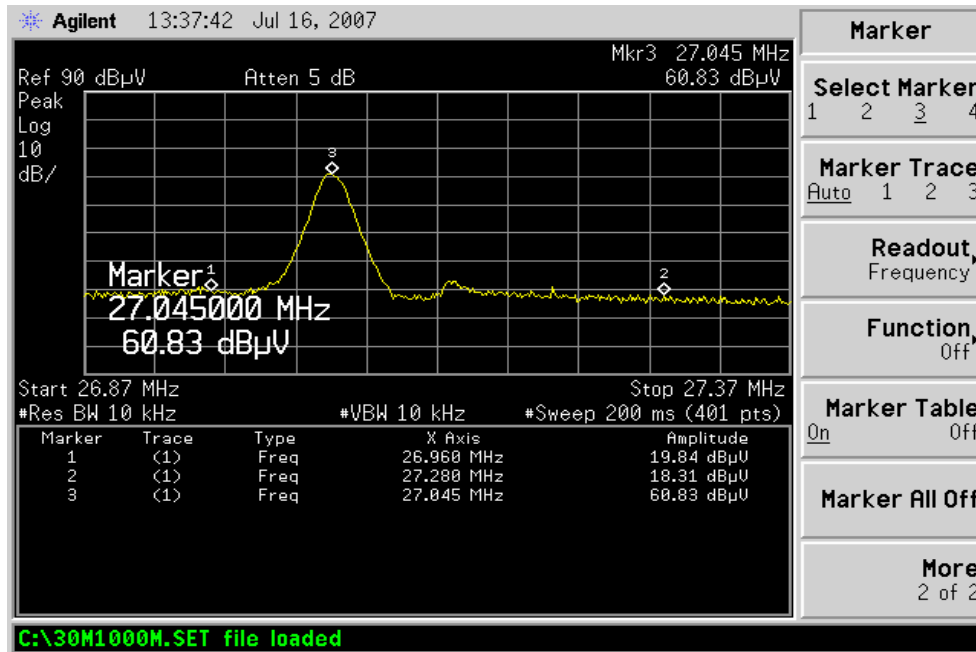
27.045MHz

Frequency MHz	Emission dBuV/m	Limit dBuV/m
26.96	19.84	40
27.28	18.31	40

27.195MHz

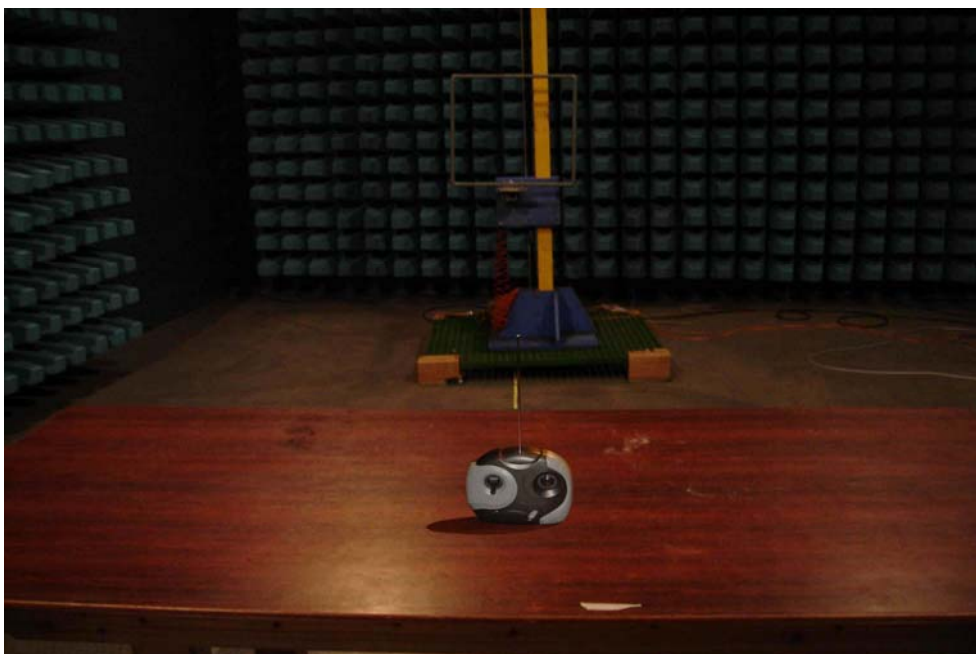
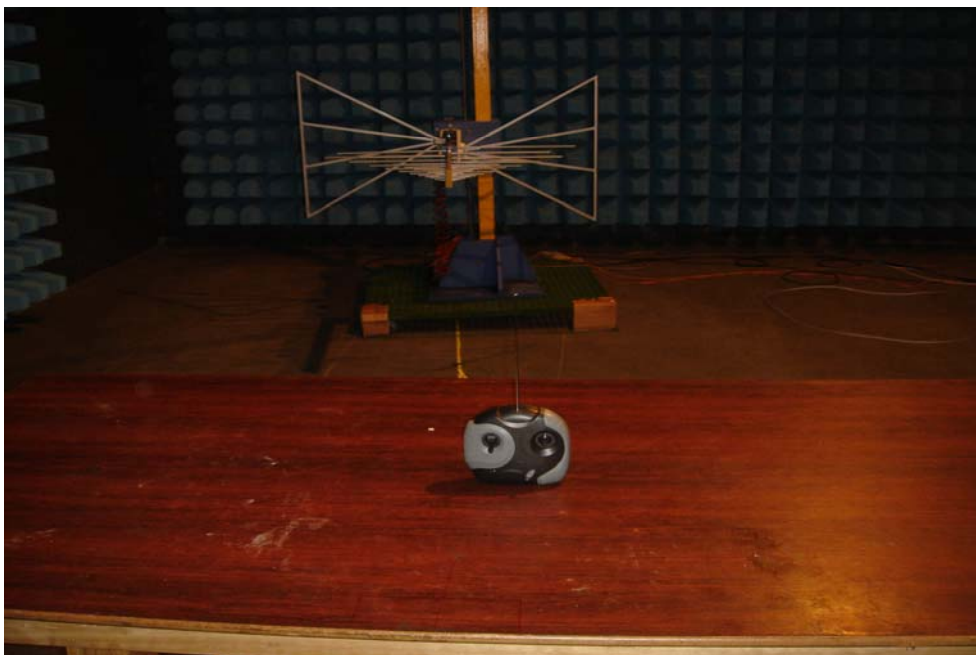
Frequency MHz	Emission dBuV/m	Limit dBuV/m
26.96	22.34	40
27.28	22.82	40

The graph as below.



9 Photographs of Testing

9.1 Radiation Emission Test View



10 Photographs - Constructional Details

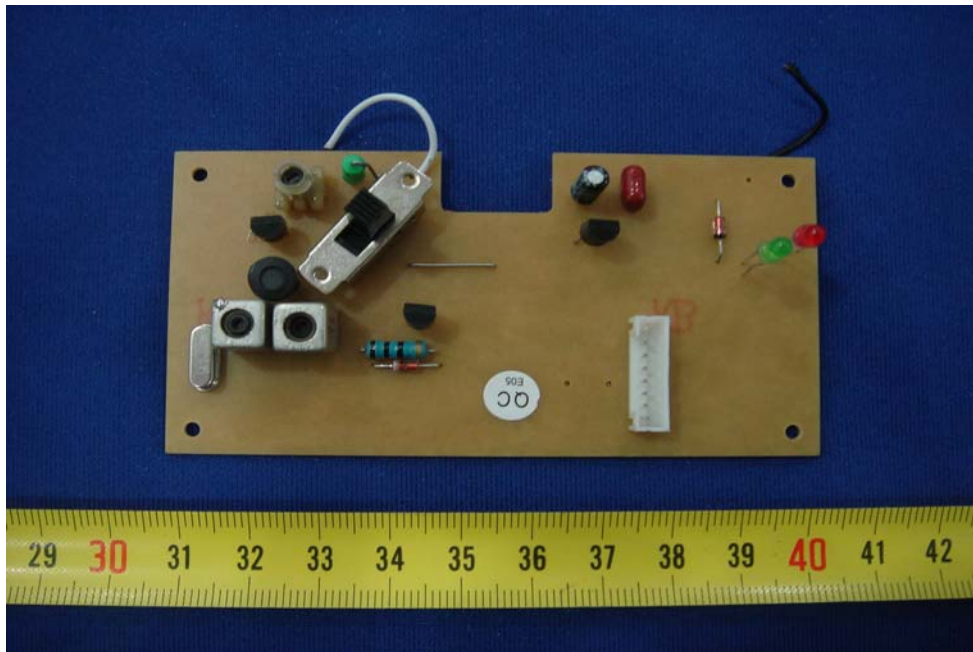
10.1 EUT - Front View



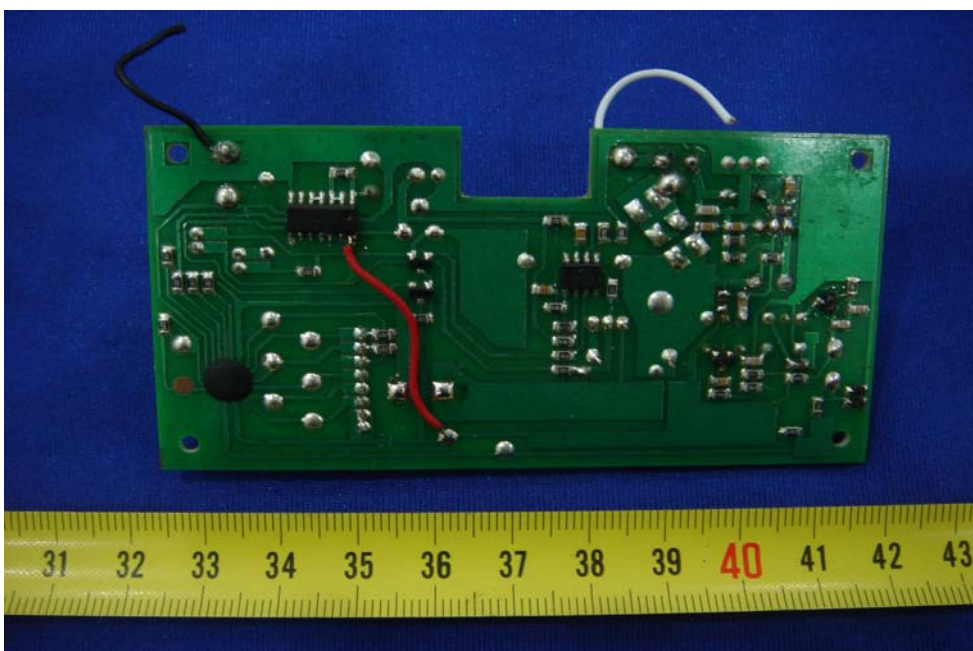
10.2 EUT - Back View



10.3 PCB- Front View



10.4 PCB- Back View



11 FCC ID Label

This device complies with Part 15 of the FCC Rules. Operation is subject to the following two conditions:(1)this device may not cause harmful interference, and (2) this device must accept any interference received, including interference that may cause undesired operation.

The Label must not be a stick-on paper. The Label on these products must be permanently affixed to the product and readily visible at the time of purchase and must last the expected lifetime of the equipment not be readily detachable.

Proposed Label Location on EUT
EUT Bottom View/proposed FCC Mark Location

