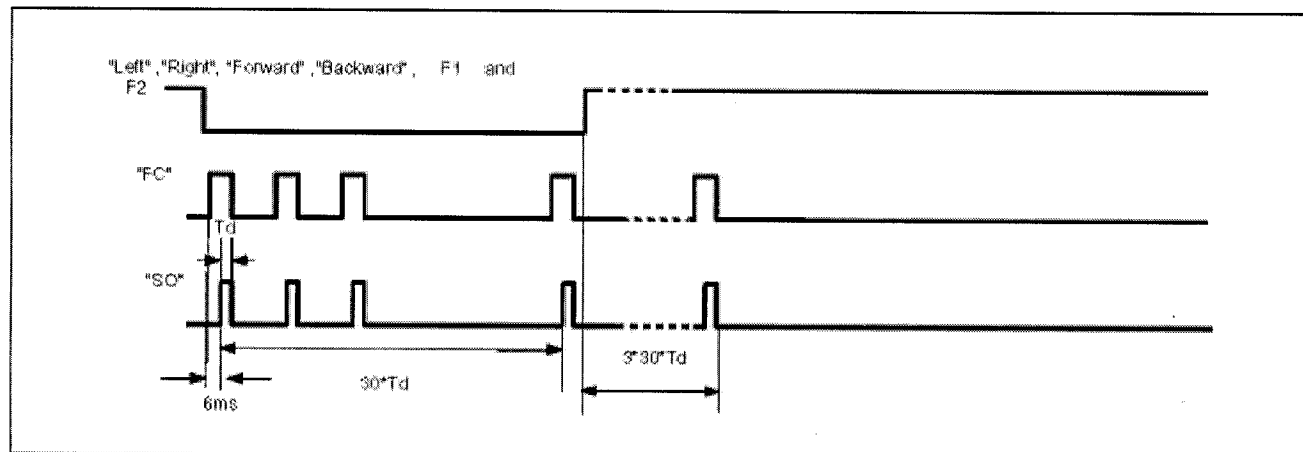


Functional Description

SO and FC

Before SO signal is sent out, 27MHz OSC must be started to work. So FC is set to high level before SO output. On the side, when player changes input status by pressing key to releasing key, FC and SO should be set to low level after sending 3 group data (9 frames data).

Timing Diagram of SO and FC



Oscillator

In the PT8T1301, there is an internal oscillator with external crystal; in the PT8T1311, there is an internal oscillator with external RC. Changing RC value can change oscillator frequency. For 1MHz clock OSC of PT8T1301, the frequency of PT8T1311 clock OSC must be 125kHz. The frequency's tolerance between TX and RX is 5%.

Clock Output (FOUT)

The PT8A1311 provides a 125kHz square-wave output with 50% duty cycle. It can be used for a DC/DC or other function.

Auto-stop time

The PT8A1311 have auto-stop function. If no effective code received, it will keep last status for 0.8 seconds and then turn off all motors.

Auto-Stop Function

