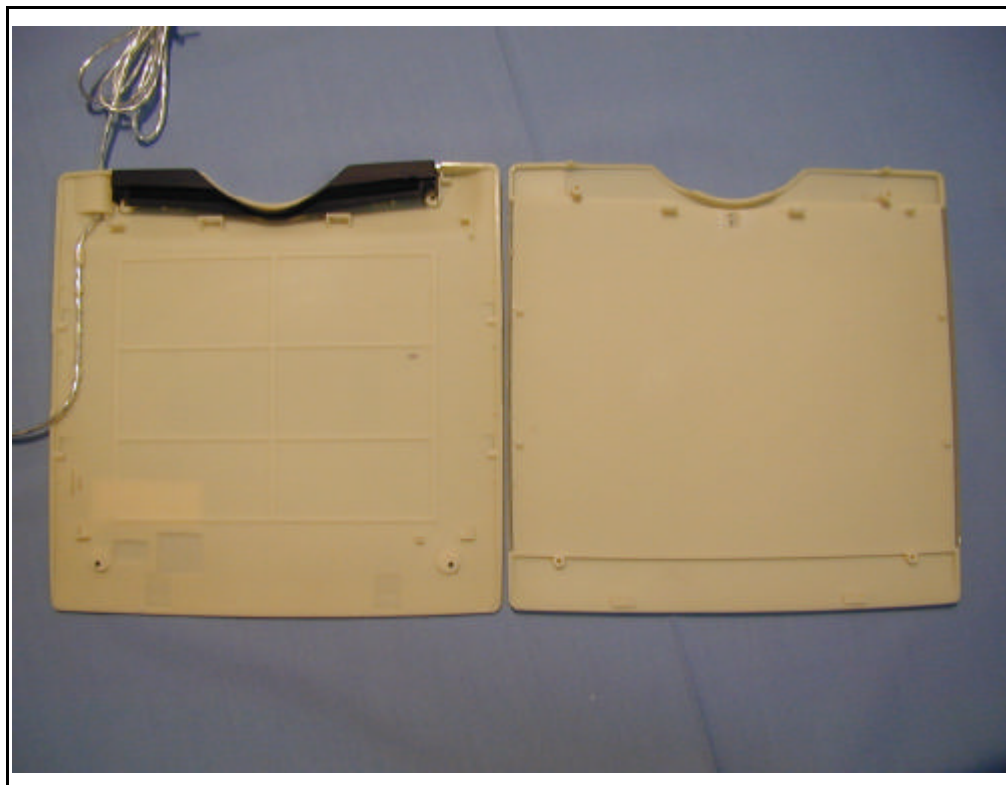
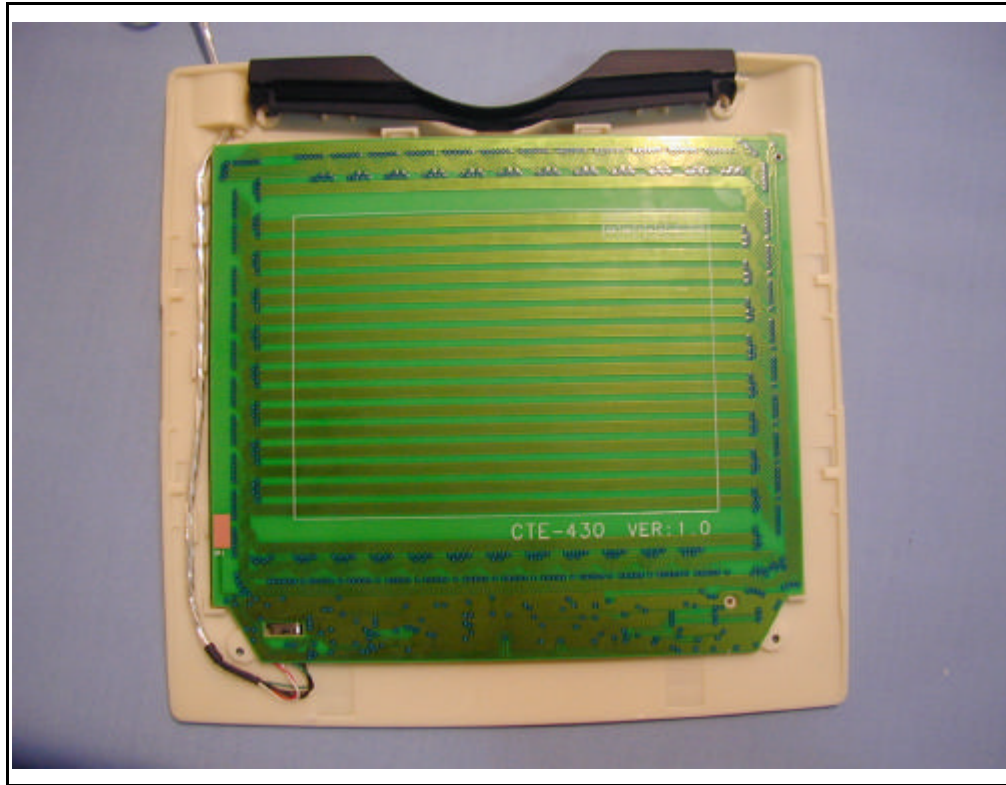




Spectrum Research & Testing Lab., Inc.
No. 101-10, Ling 8, Shan-Tong Li,
Chung-Li City, Taoyuan,
Taiwan, R.O.C.

- PHOTO OF EUT(CTE430)

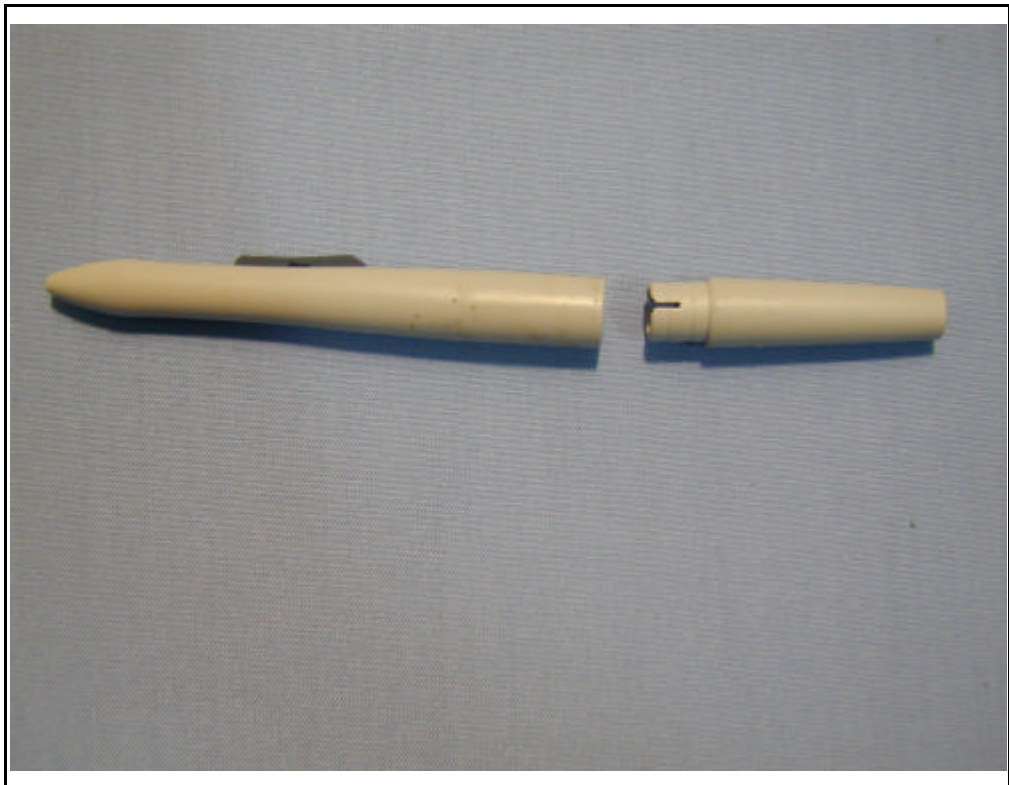




Spectrum Research & Testing Lab., Inc.

No. 101-10, Ling 8, Shan-Tong Li,
Chung-Li City, Taoyuan,
Taiwan, R.O.C.

- PHOTO OF EUT (Graphire3 pen)

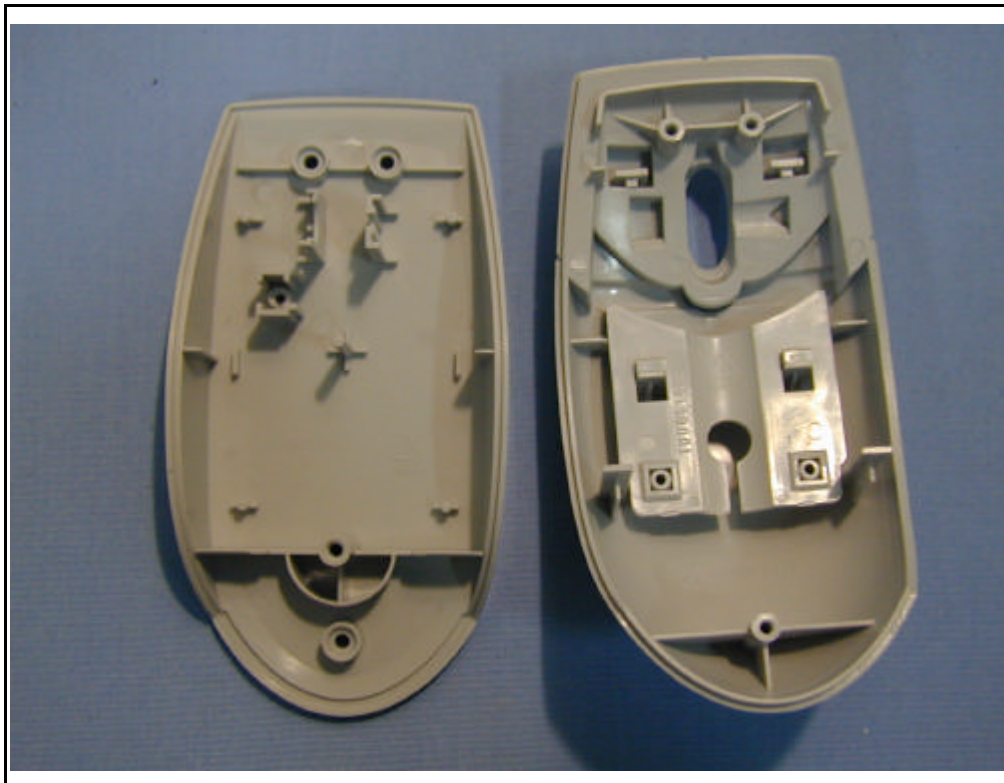
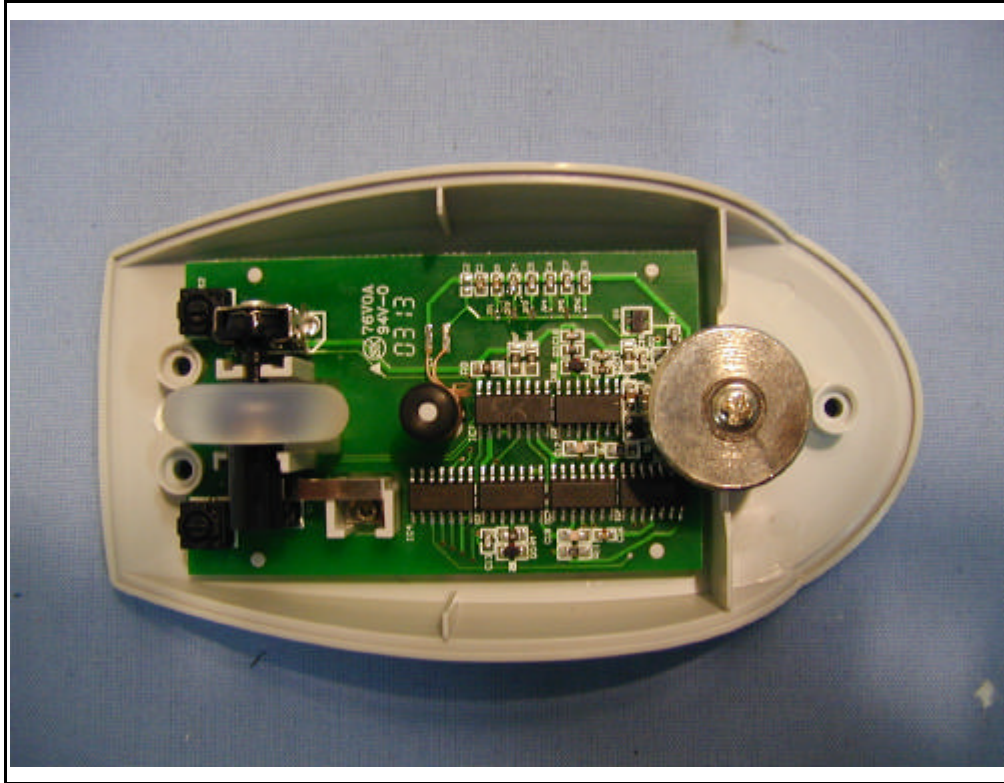




Spectrum Research & Testing Lab., Inc.

No. 101-10, Ling 8, Shan-Tong Li,
Chung-Li City, Taoyuan,
Taiwan, R.O.C.

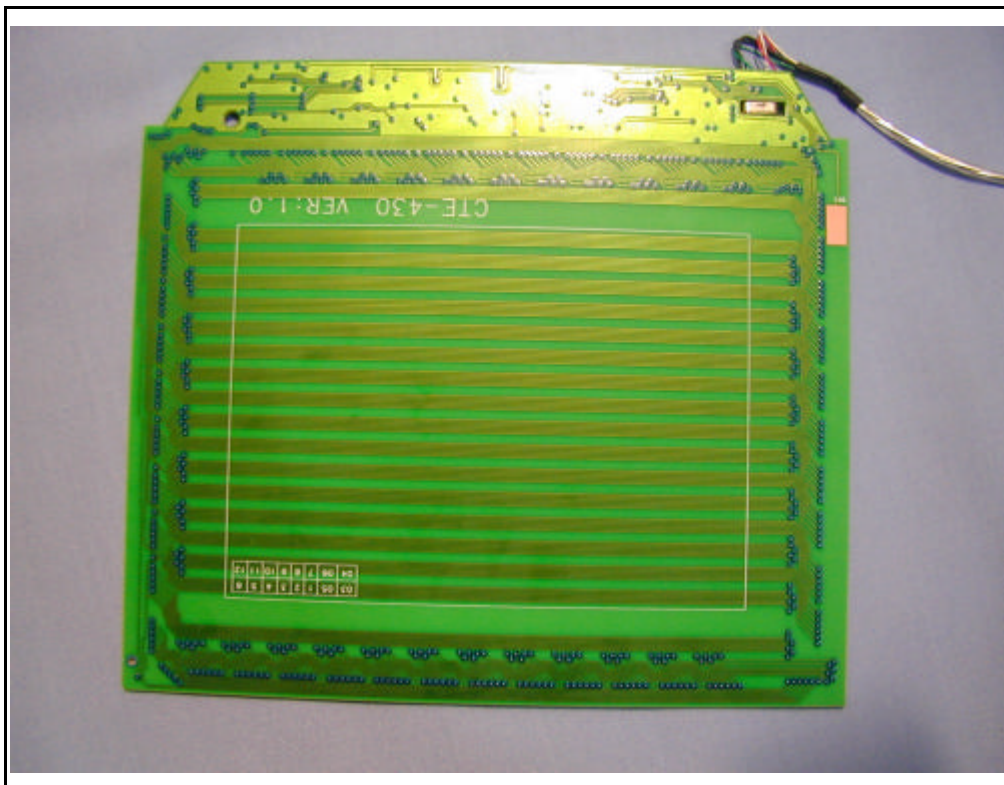
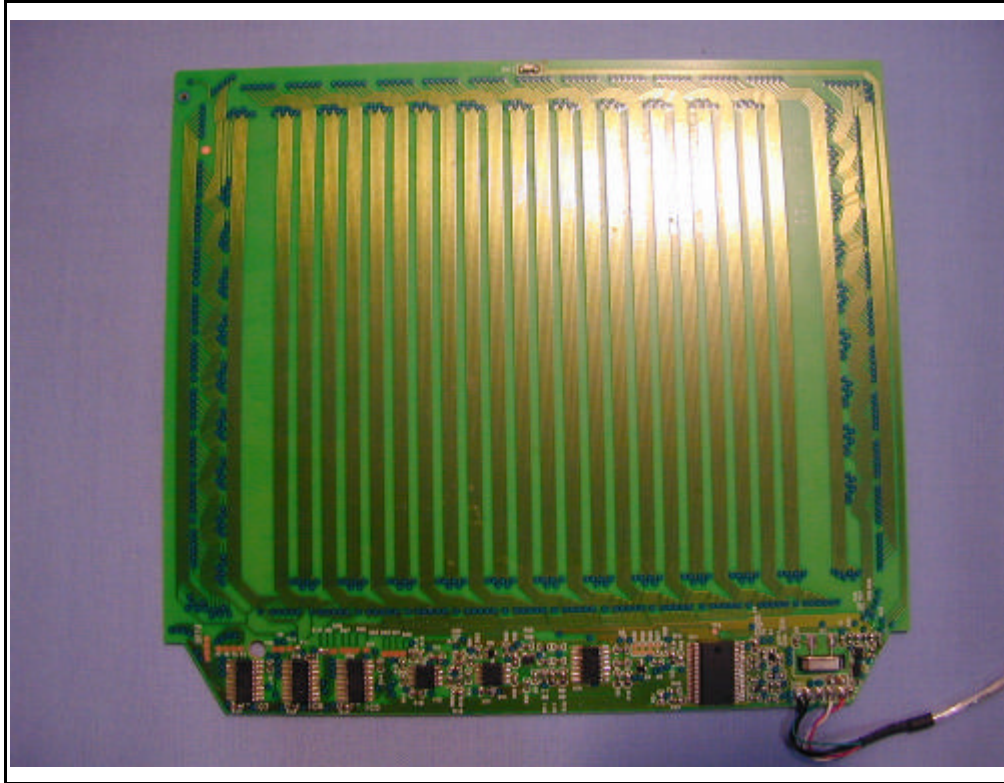
- PHOTO OF EUT (Graphire3 mouse)





Spectrum Research & Testing Lab., Inc.
No. 101-10, Ling 8, Shan-Tong Li,
Chung-Li City, Taoyuan,
Taiwan, R.O.C.

- PHOTO OF EUT (CTE430)

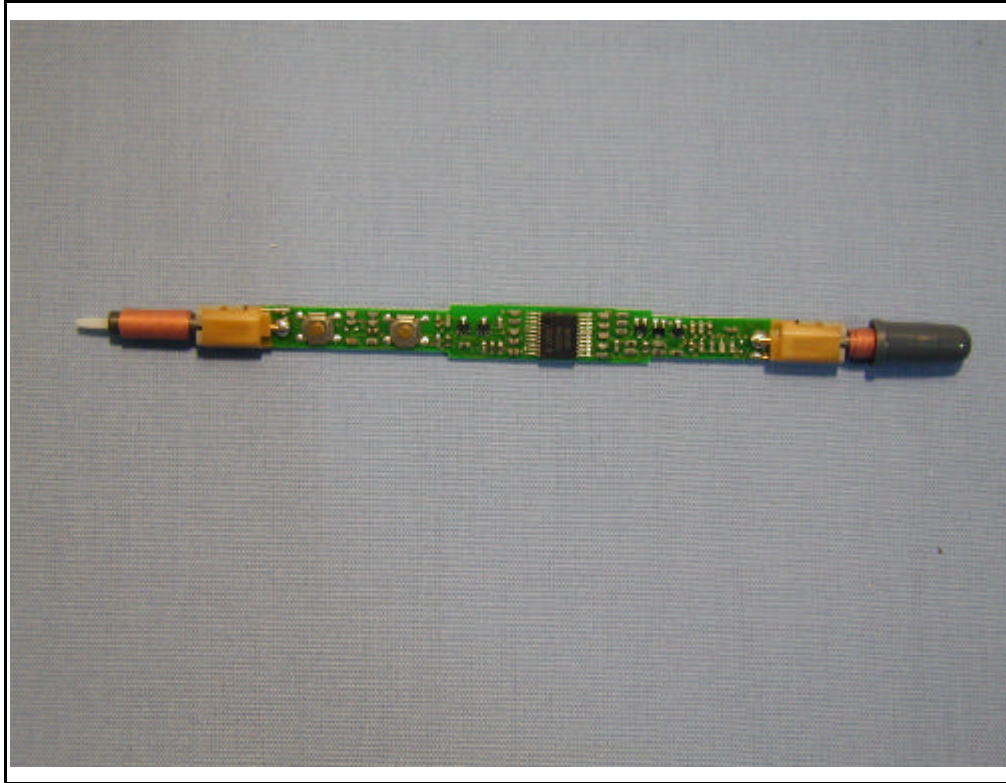




Spectrum Research & Testing Lab., Inc.

No. 101-10, Ling 8, Shan-Tong Li,
Chung-Li City, Taoyuan,
Taiwan, R.O.C.

- PHOTO OF EUT (Graphire3 pen)





Spectrum Research & Testing Lab., Inc.
No. 101-10, Ling 8, Shan-Tong Li,
Chung-Li City, Taoyuan,
Taiwan, R.O.C.

- PHOTO OF EUT (Graphire3 mouse)

