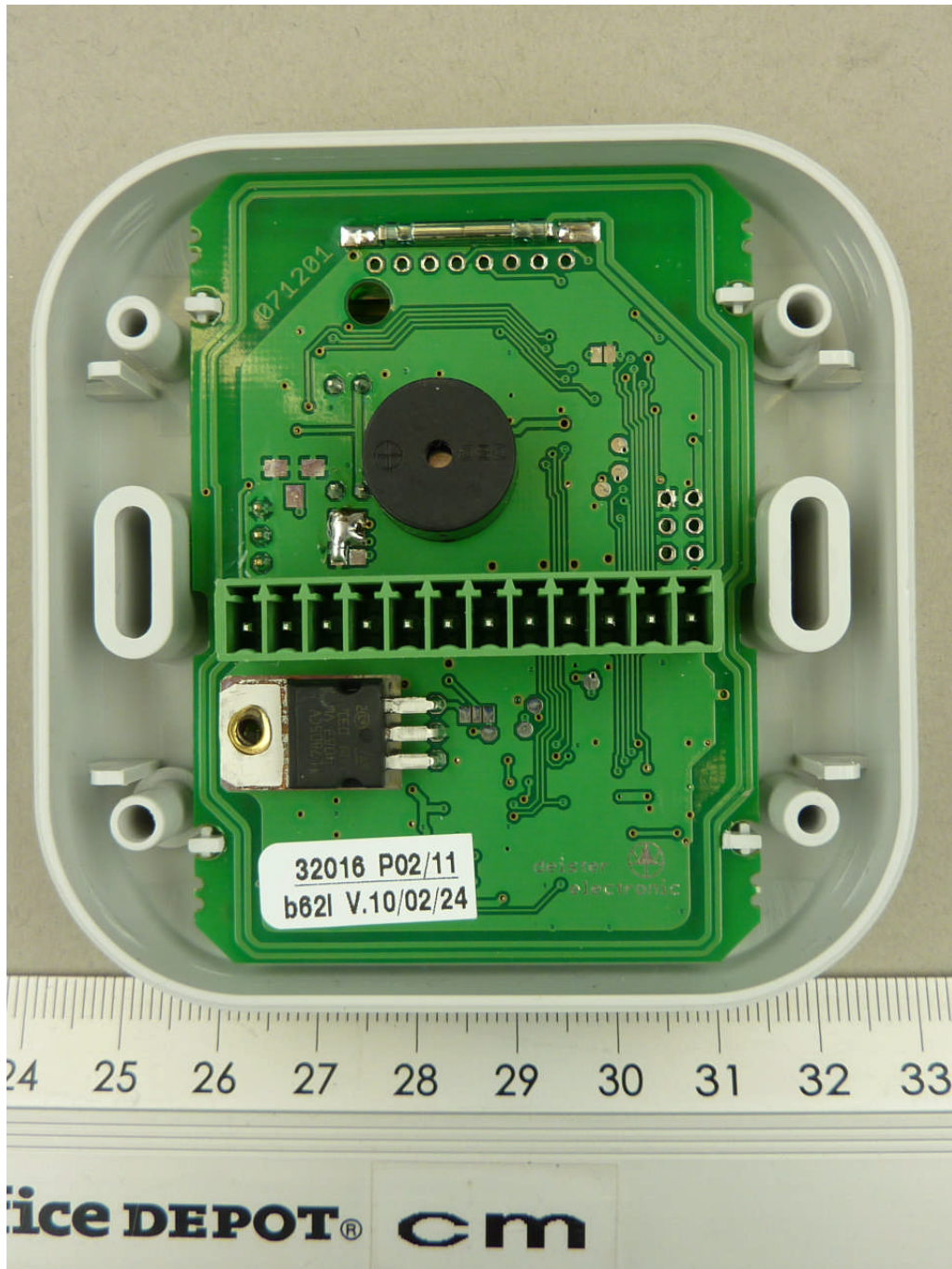
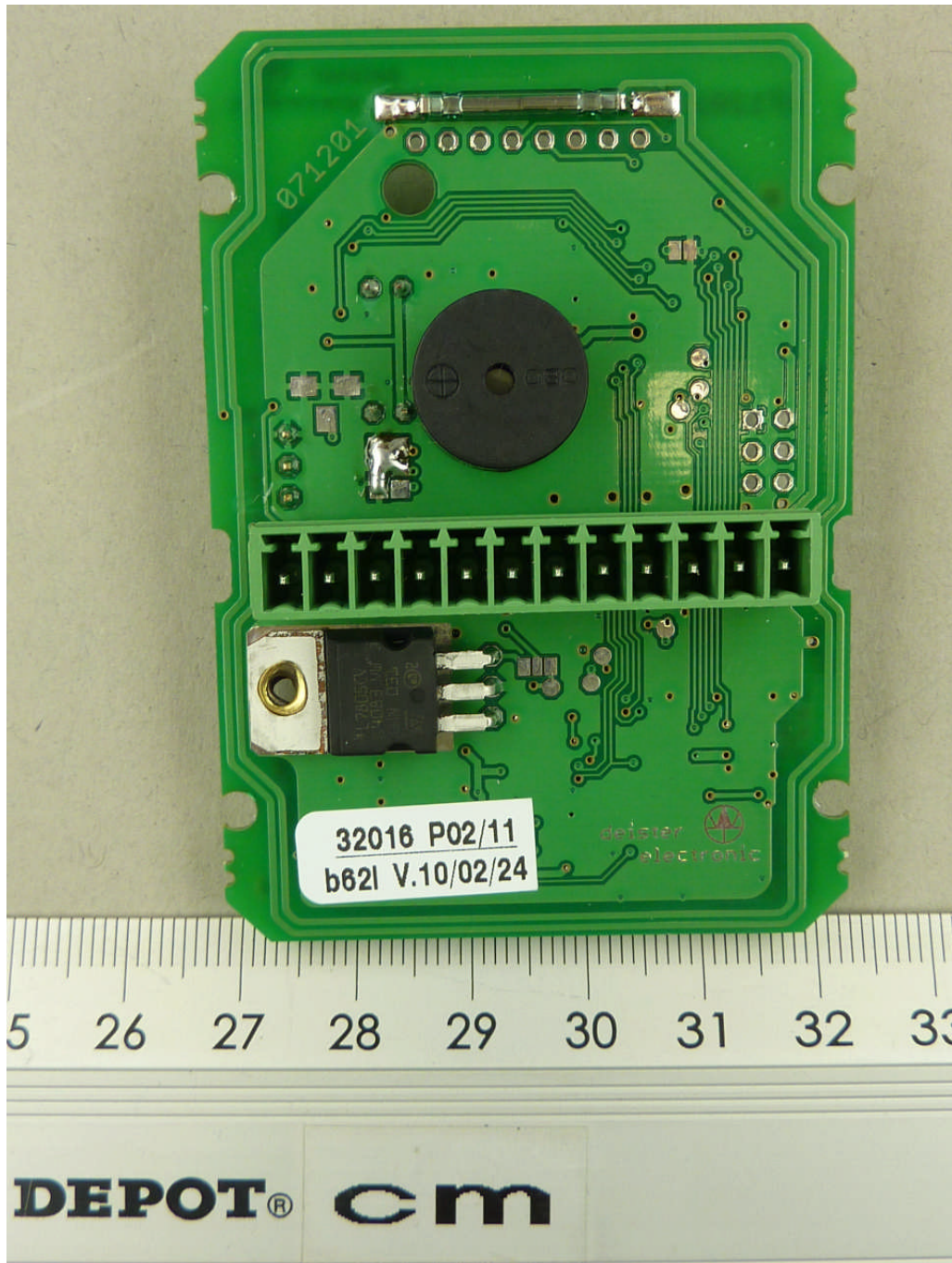


ANNEX B: INTERNAL PHOTOS OF THE EUT



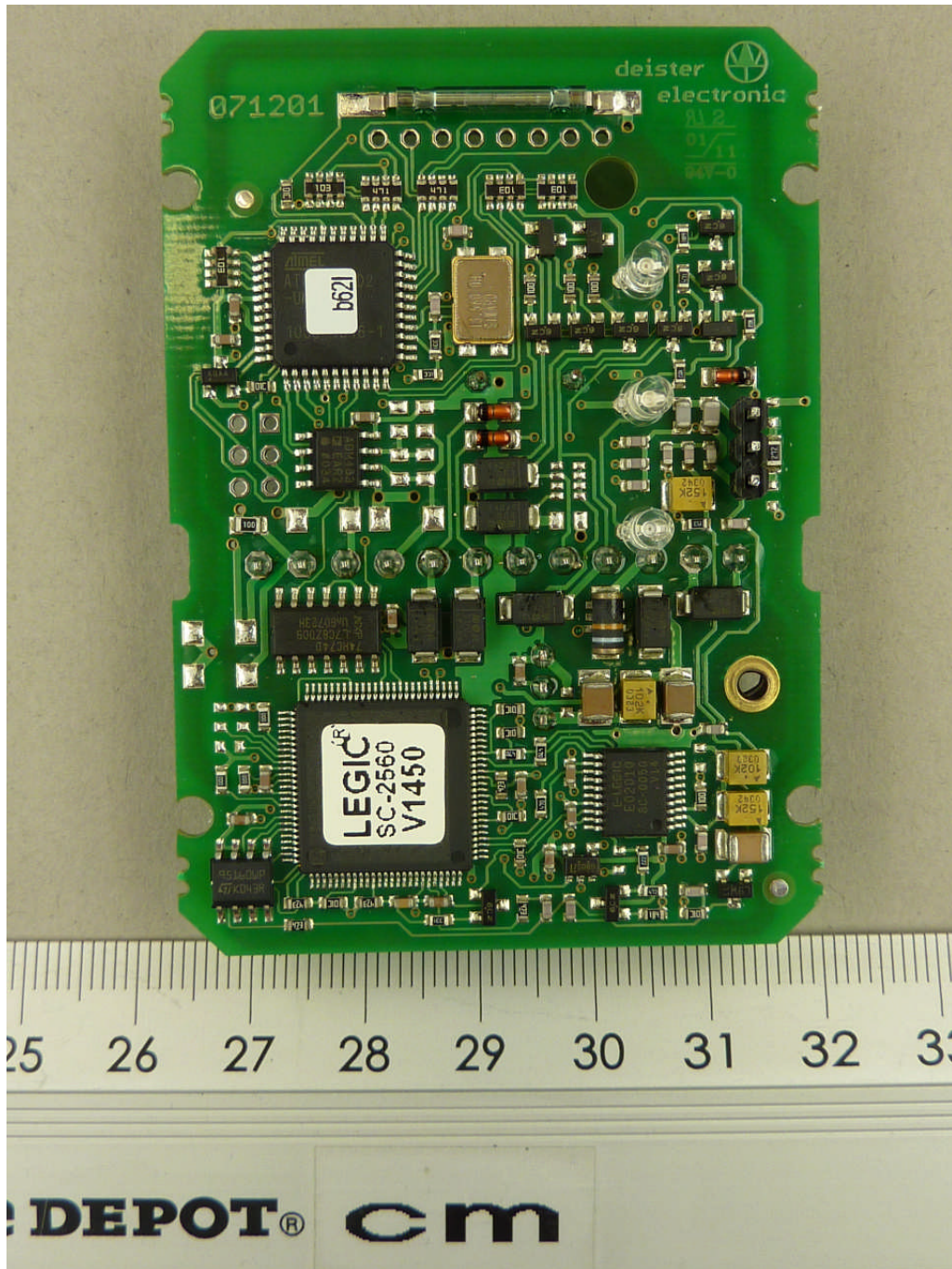
113050_12.JPG: PRL5A/2 internal view, unsealed sample

ANNEX B: INTERNAL PHOTOS OF THE EUT



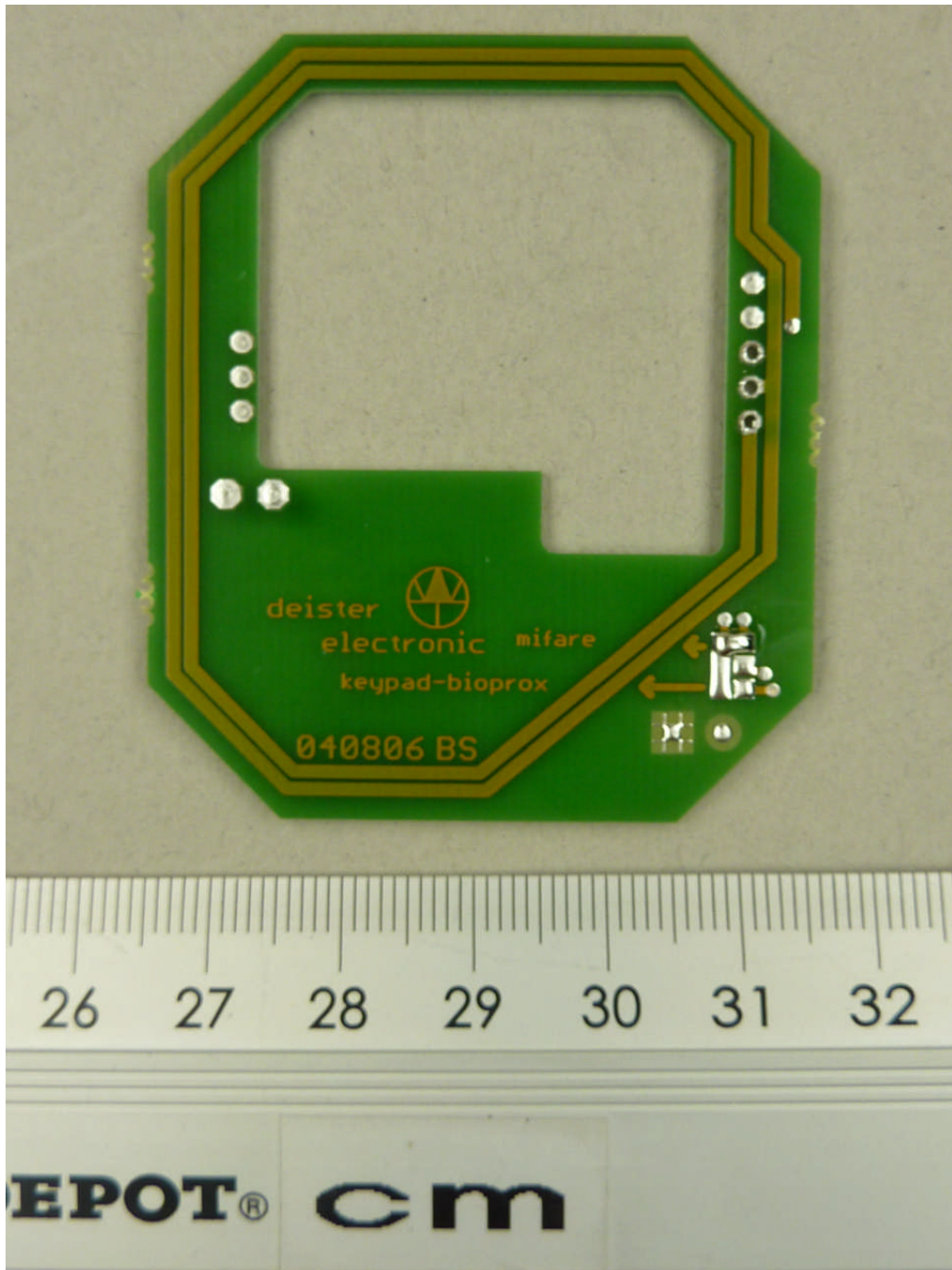
113050_14.JPG: PRL5A/2, main PCB, top view

ANNEX B: INTERNAL PHOTOS OF THE EUT



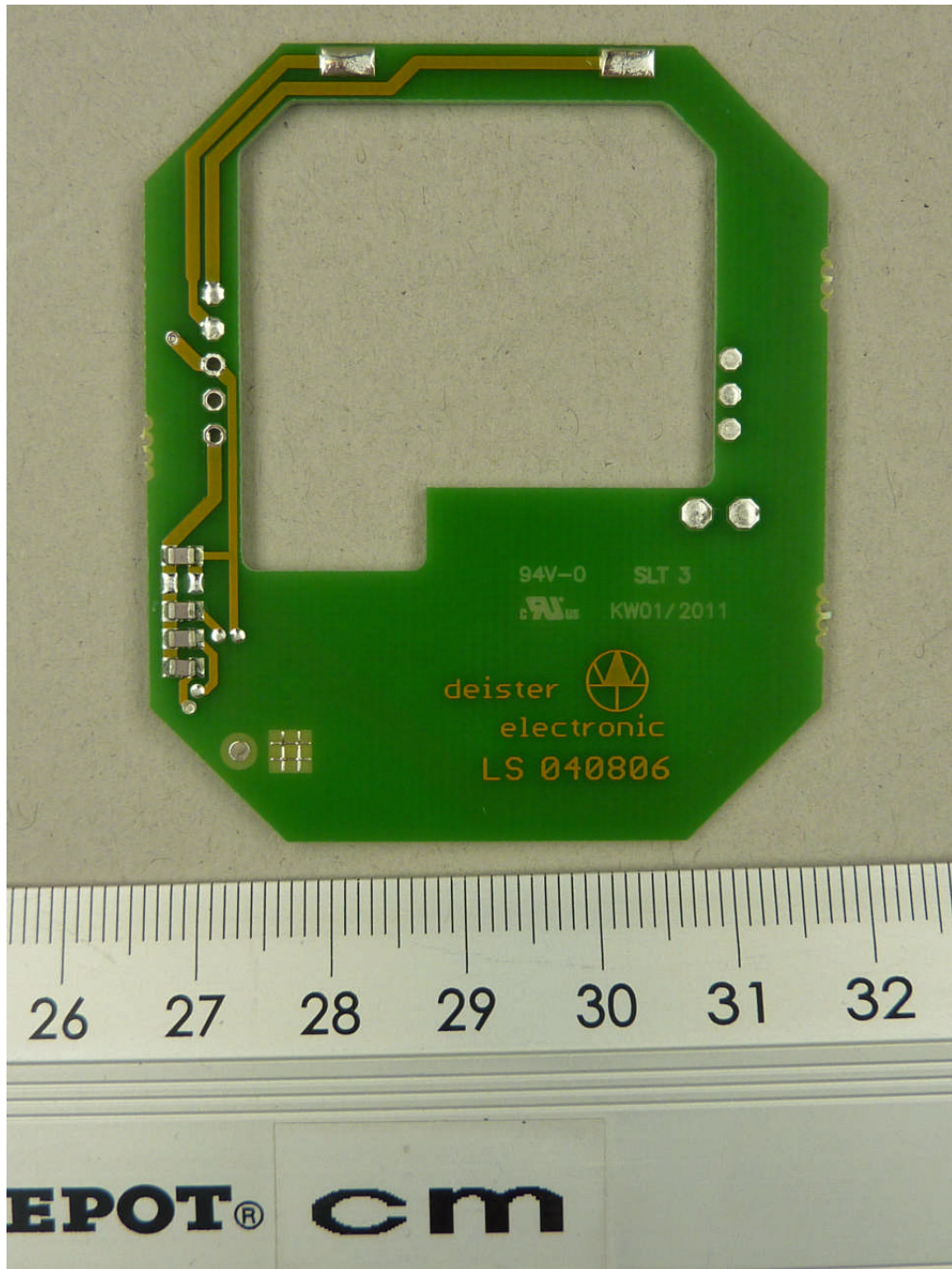
113050_13.JPG: PRL5A/2, main PCB, bottom view

ANNEX B: INTERNAL PHOTOS OF THE EUT



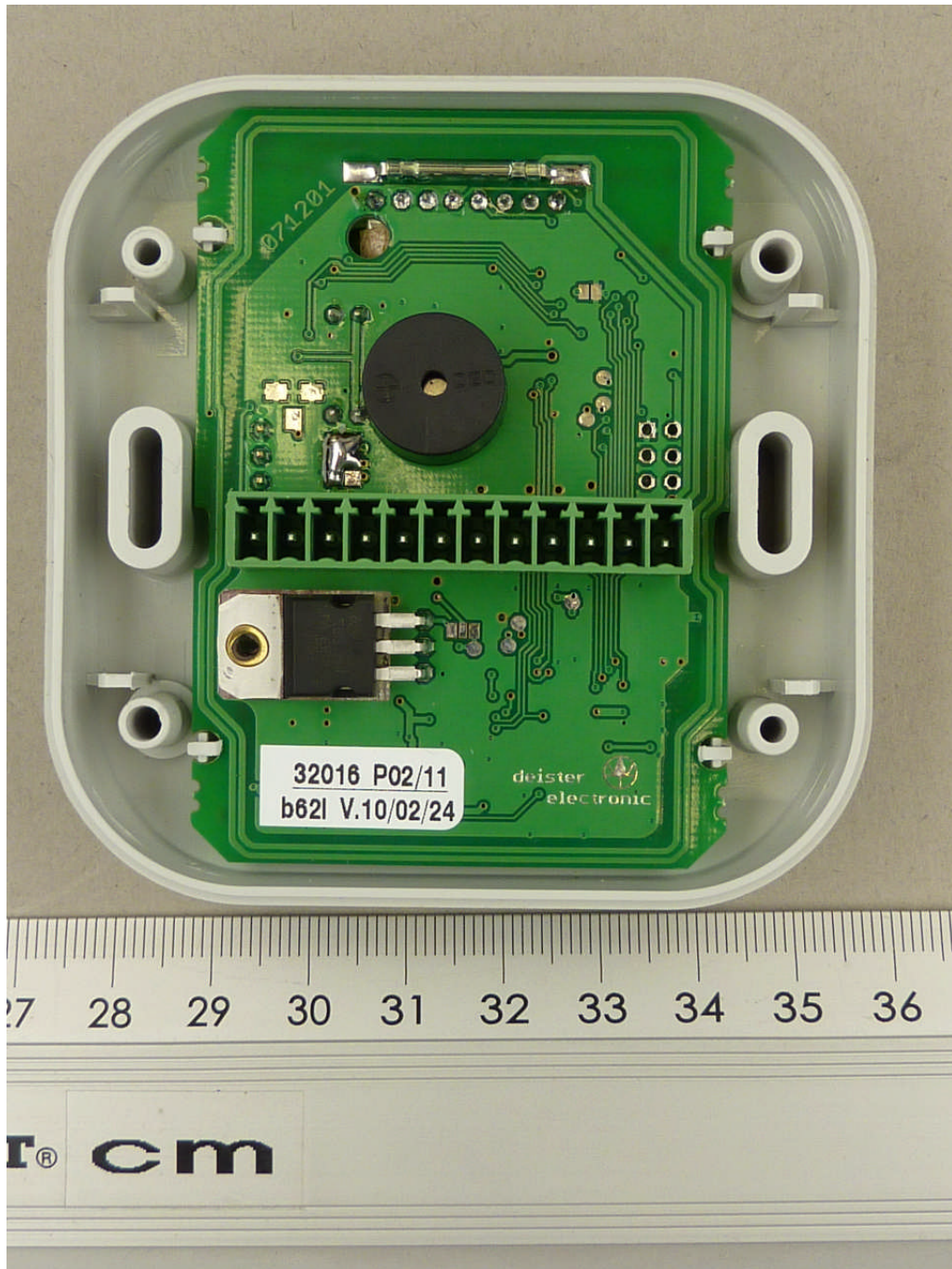
113050_15.JPG: PRL5A/2, antenna PCB, top view

ANNEX B: INTERNAL PHOTOS OF THE EUT



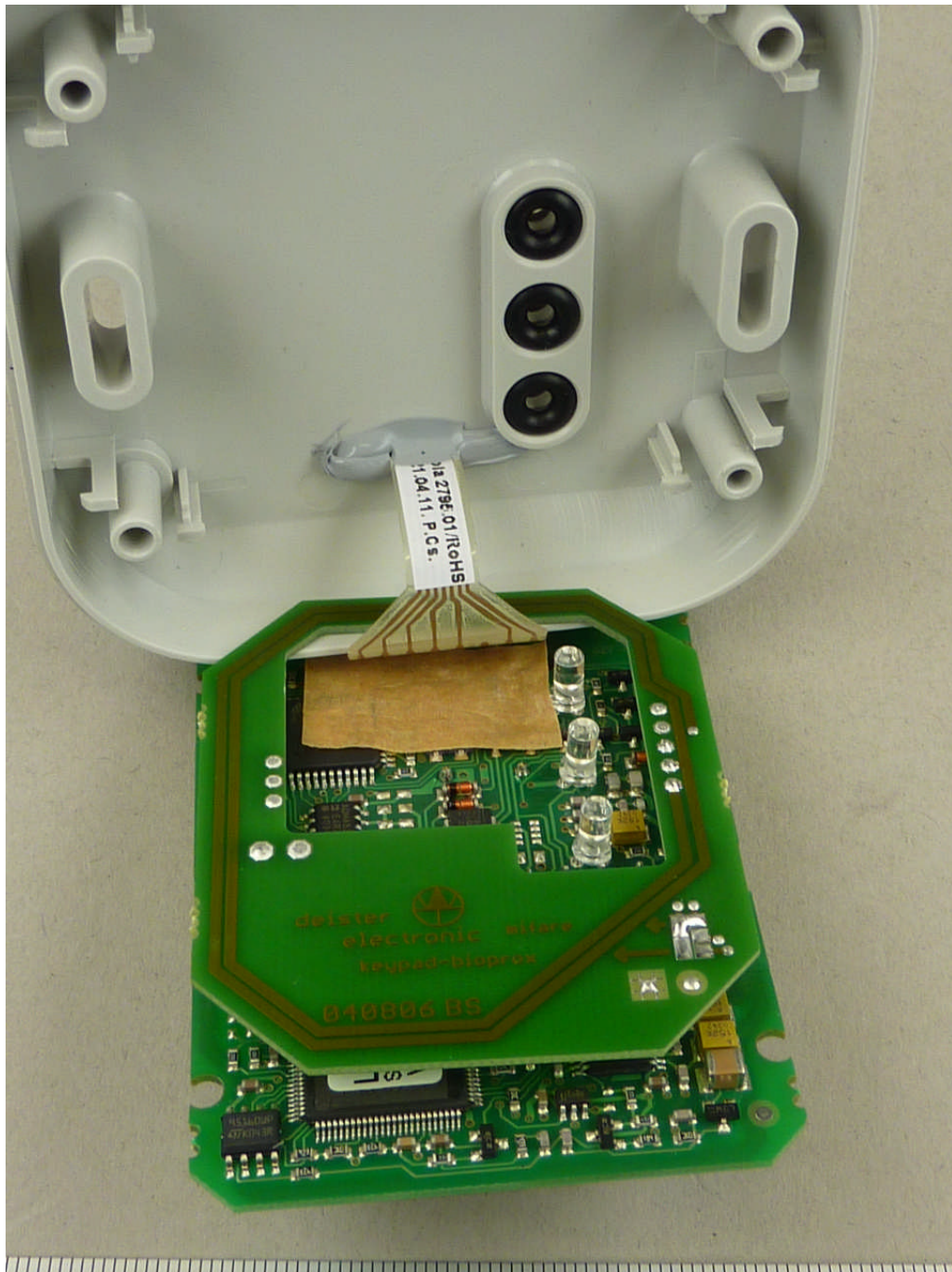
113050_16.JPG: PRL5A/2, antenna PCB, bottom view

ANNEX B: INTERNAL PHOTOS OF THE EUT



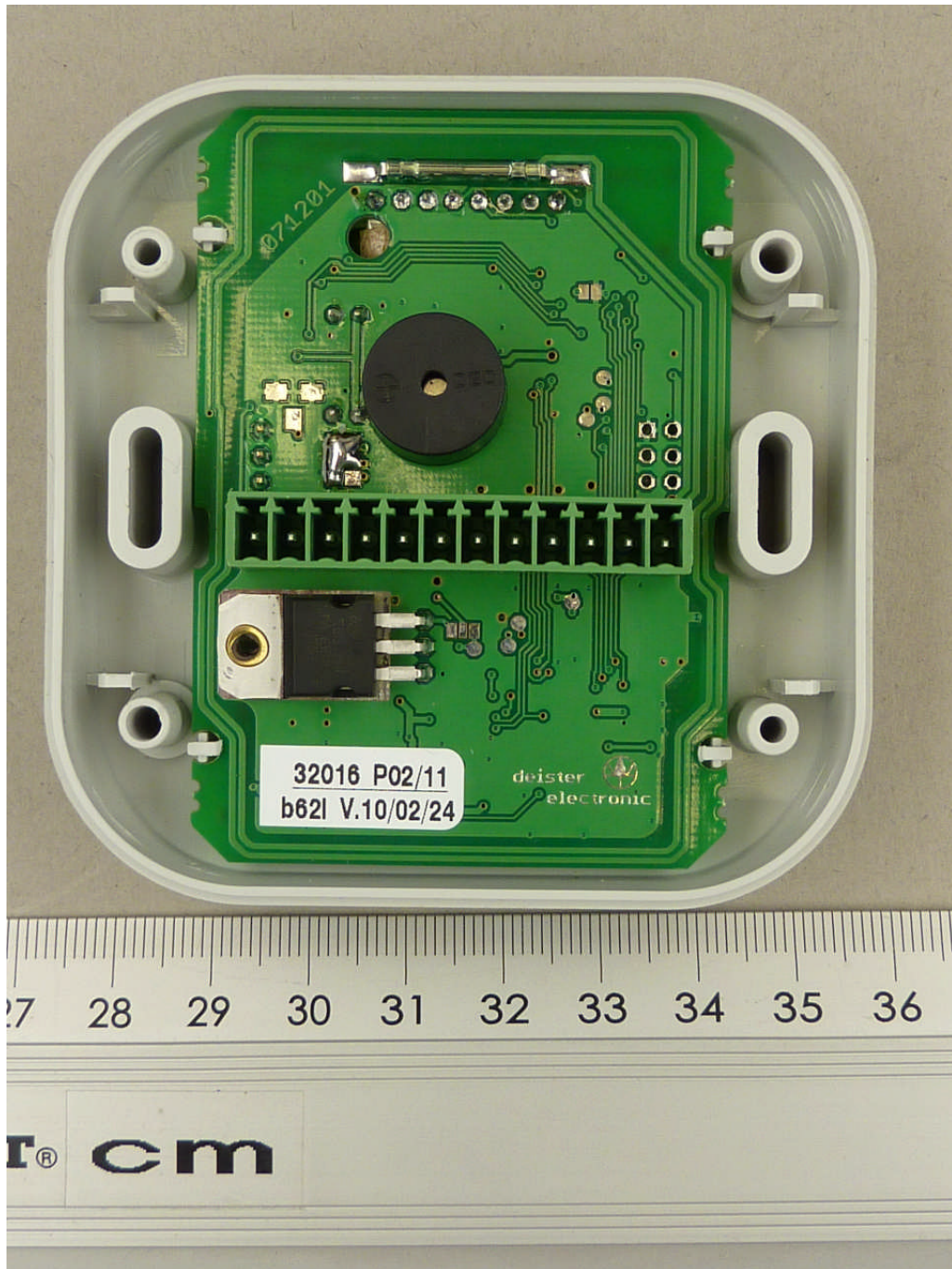
113050_4.JPG: KPL5A/2 internal view, unsealed sample

ANNEX B: INTERNAL PHOTOS OF THE EUT



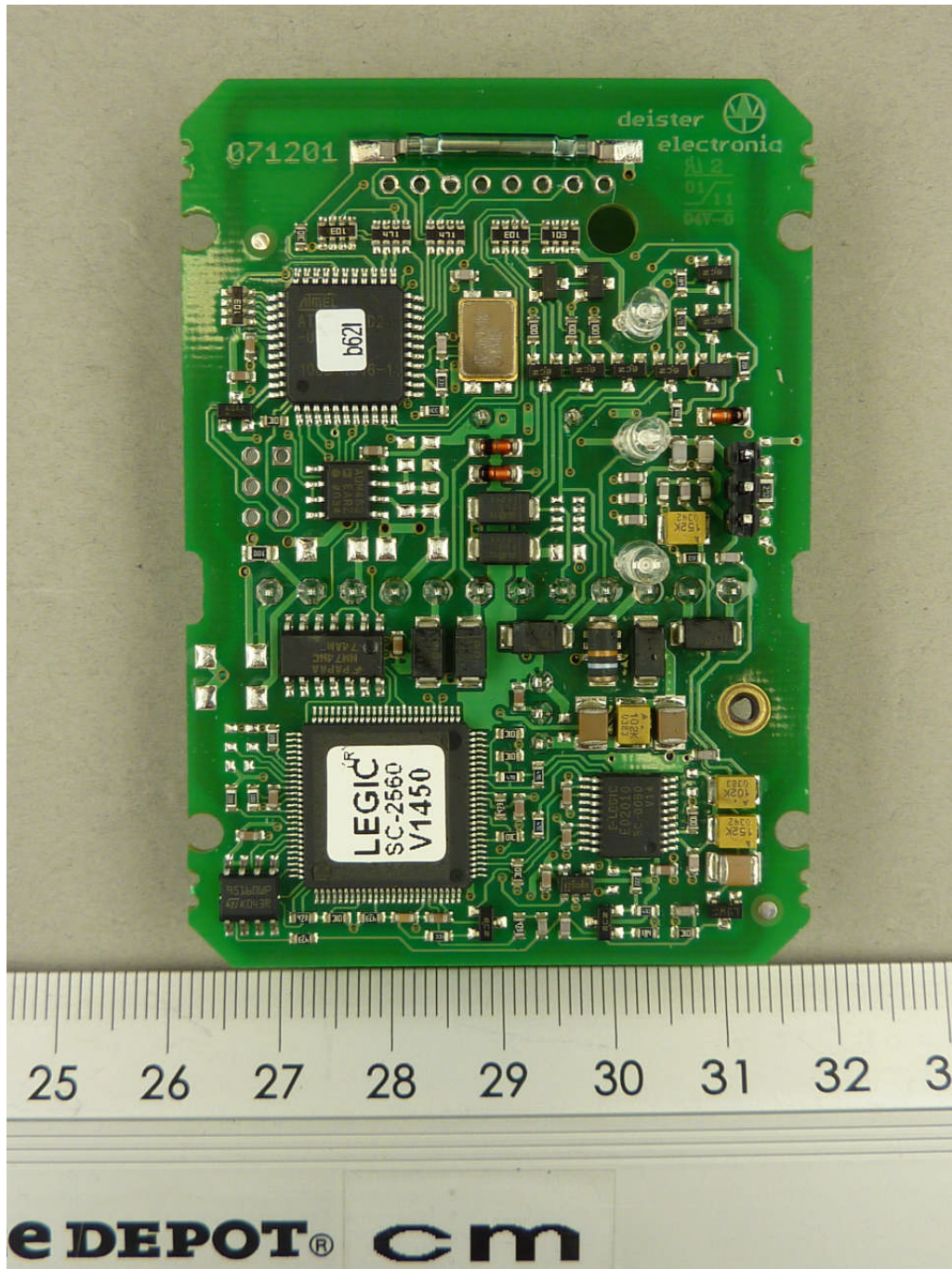
113050_6.JPG: KPL5A/2 internal view, unsealed sample

ANNEX B: INTERNAL PHOTOS OF THE EUT



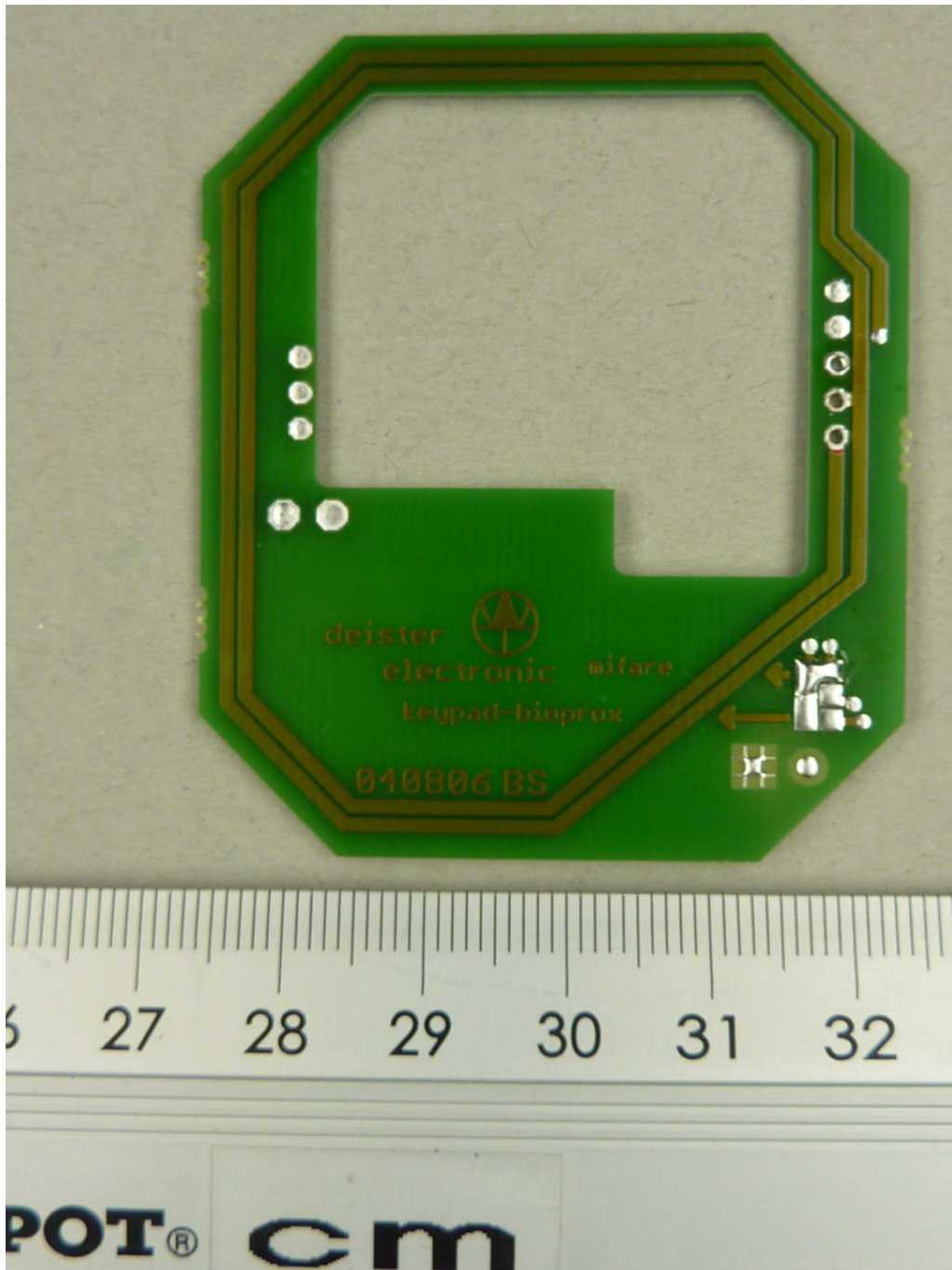
113050_5.JPG: KPL5A/2, main PCB, top view

ANNEX B: INTERNAL PHOTOS OF THE EUT



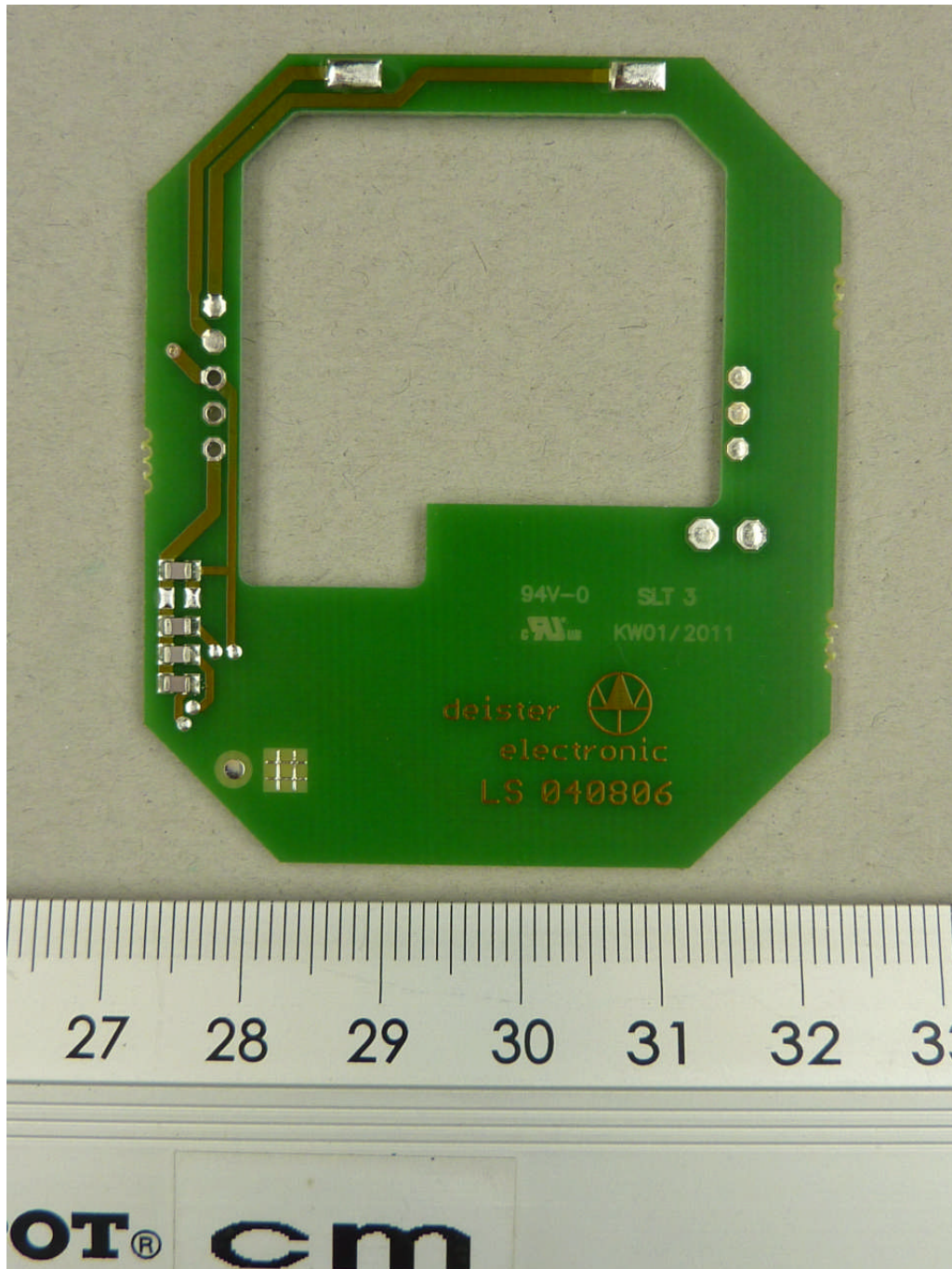
113050_9.JPG: KPL5A/2, main PCB, bottom view

ANNEX B: INTERNAL PHOTOS OF THE EUT



113050_7.JPG: KPL5A/2, antenna PCB, top view

ANNEX B: INTERNAL PHOTOS OF THE EUT



113050_8.JPG: KPL5A/2, antenna PCB, bottom view