

BSSH16 Tuning

The HH16_PC Programmer should be used for tuning of this unit, "BSSH16".

This programmer is included in the CD we sent to TIMCO before.

1. The screen as below Fig.1 will be displayed when the HH16_PC Programmer is booted.

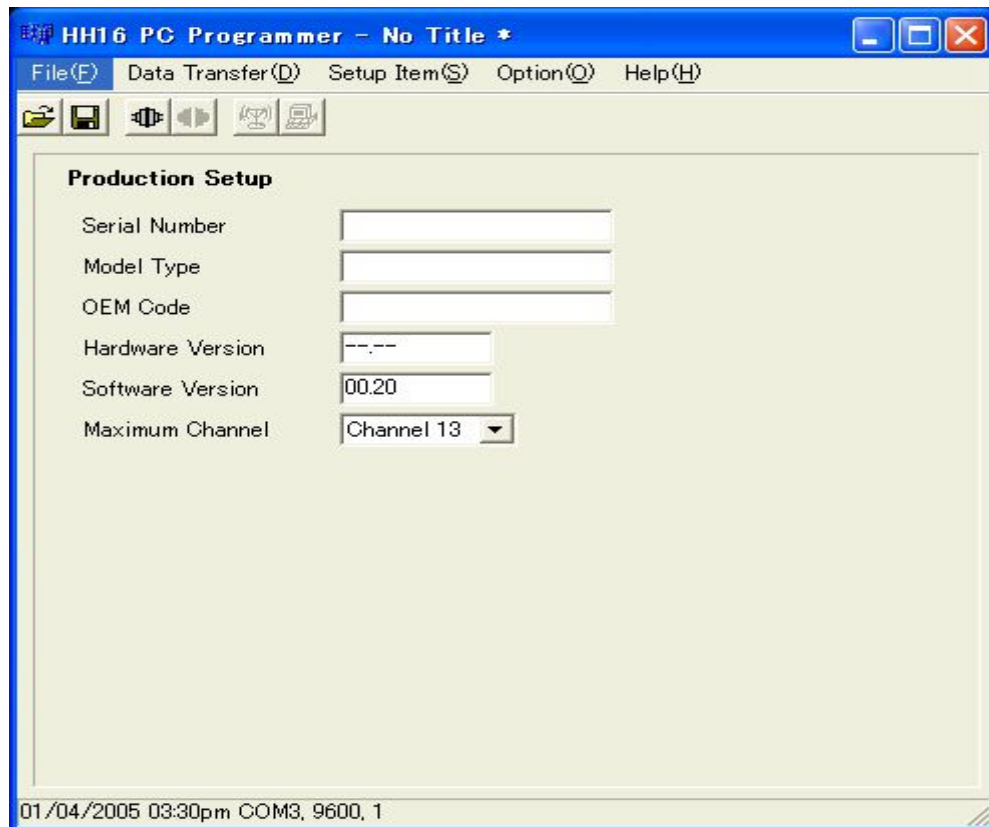


Fig. 1

2. Connecting the BSSH16 with your PC by the Programming Cable.

3. Turning on the BSSH16.

4. Connecting:

To click the "CONNECT" icon in the PC Programmer main window.

***Refer to Fig.2 as below. The icon is circled by red line.

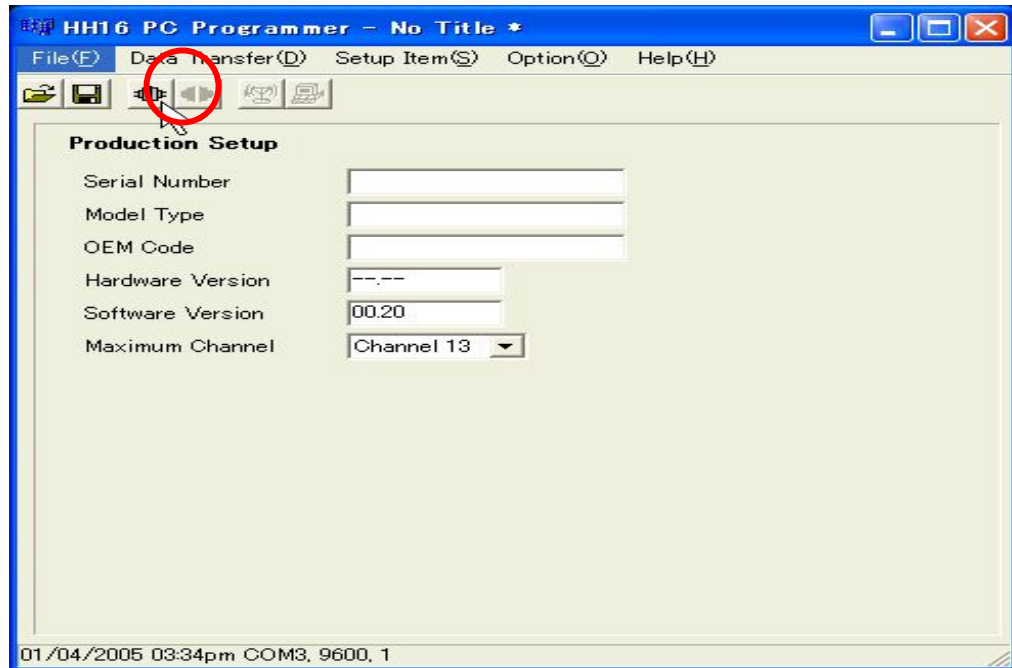


Fig.2

5. Reading the DATA from the unit:

To click the “READ” icon so as to transfer the data in the unit to PC programmer.

***Refer to Fig.3 as below. The icon is circled by red line.

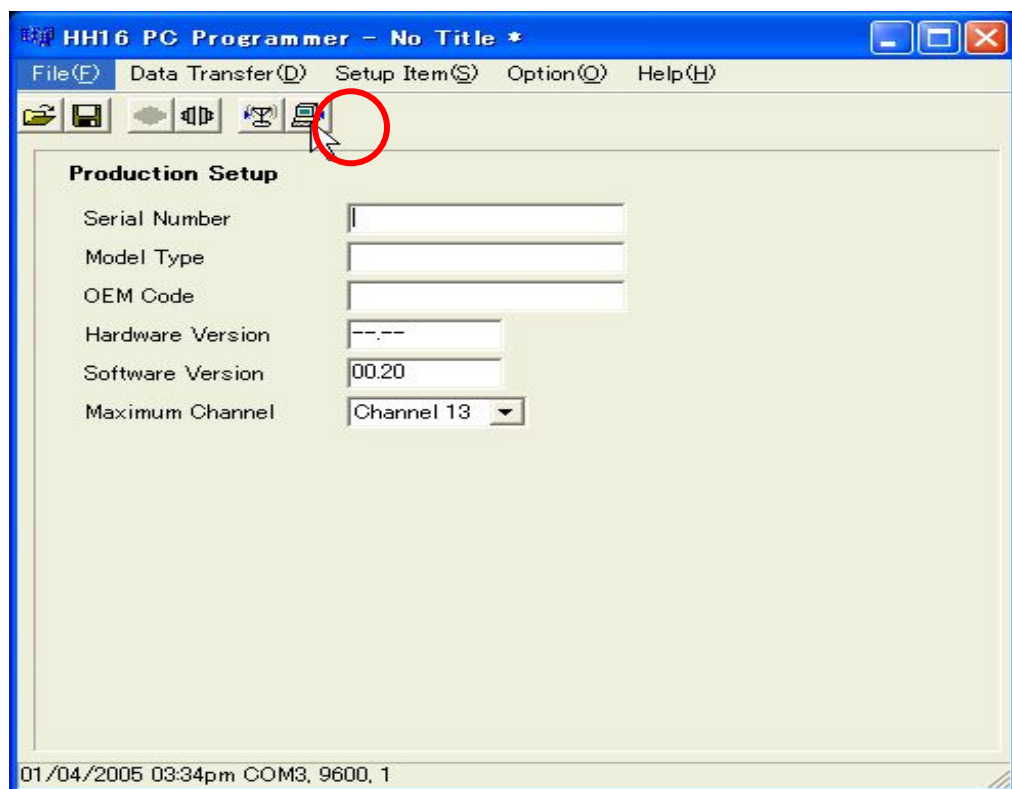


Fig.3

6. To select “Tune (T)” thru the Setup Item tool bar.

***Refer to the Fig.4 as below.

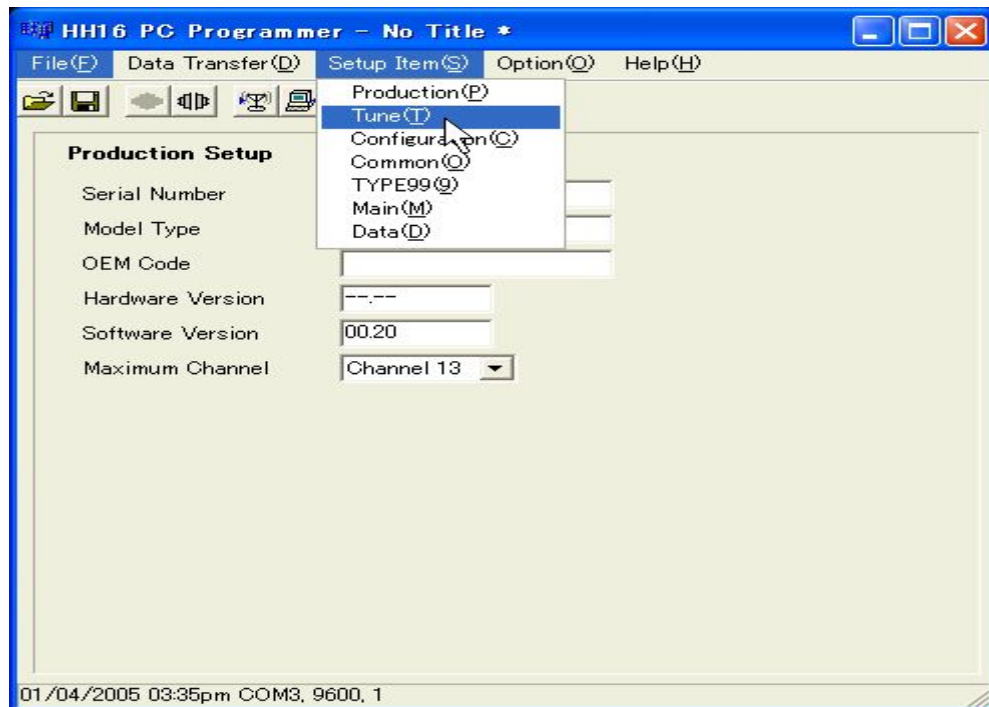


Fig.4

7. The screen like Fig.5 as below will be displayed once clicking the item “Tune (T)”.

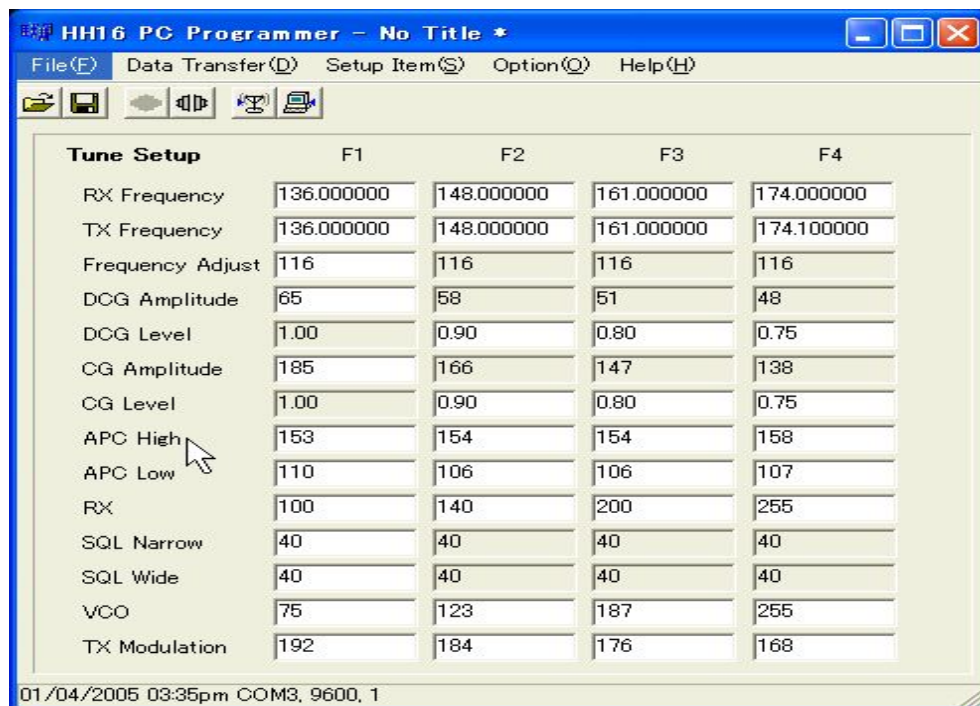


Fig.5

Fluctuations of RF Output Power, Modulation per frequencies will be kept as minimum as possible by having the 4-frequencies which would be adjusted in the band.

Definition

RX Frequency: Can select the RX Frequency to be adjusted.

TX Frequency: Can select the TX Frequency to be adjusted.

Frequency Adjust: Can adjust the TCXO Frequency.

DCG Amplitude: Can adjust the Amplitude for CDCSS.

DCG Level: Can adjust the Modulation for CDCSS.

CG Amplitude: Can adjust the Amplitude for CTCSS.

CG Level: Can adjust the modulation for CTCSS.

APC High: RF Output Power Level

APC Low: RF Output Power Level

RX: RF Band Pass Filter Tuning

SQL Narrow: SQL of Narrow Band

SQL Wide: SQL of Wide Band

VCO: Can adjust the modulation sensitivity of VCO at TX.

TX Modulation: Modulation adjustment.

8. Writing the DATA

To click the "Write" icon so as to transfer the adjusted data into the unit from PC programmer.

***Refer to Fig.6 as below. The icon is circled by red line.

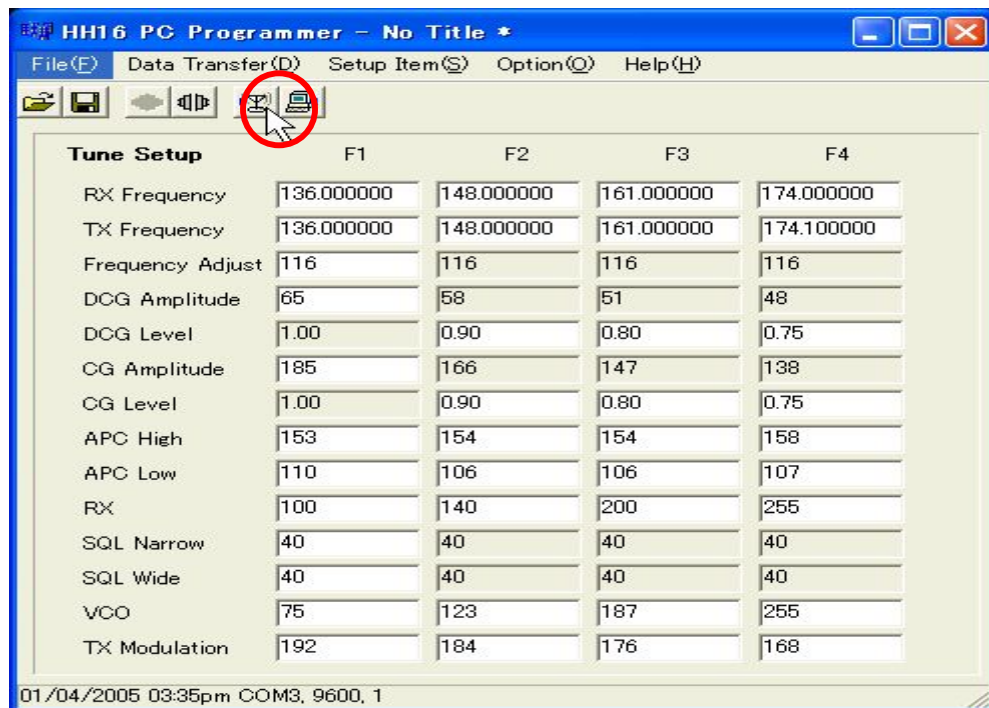


Fig.6

8, Disconnect

To click the “Disconnect” icon will finish the operation.

***Refer to Fig.7 as below. The icon is circled by red line.

Programming Cable can be disconnected and PC programming software can be ended.

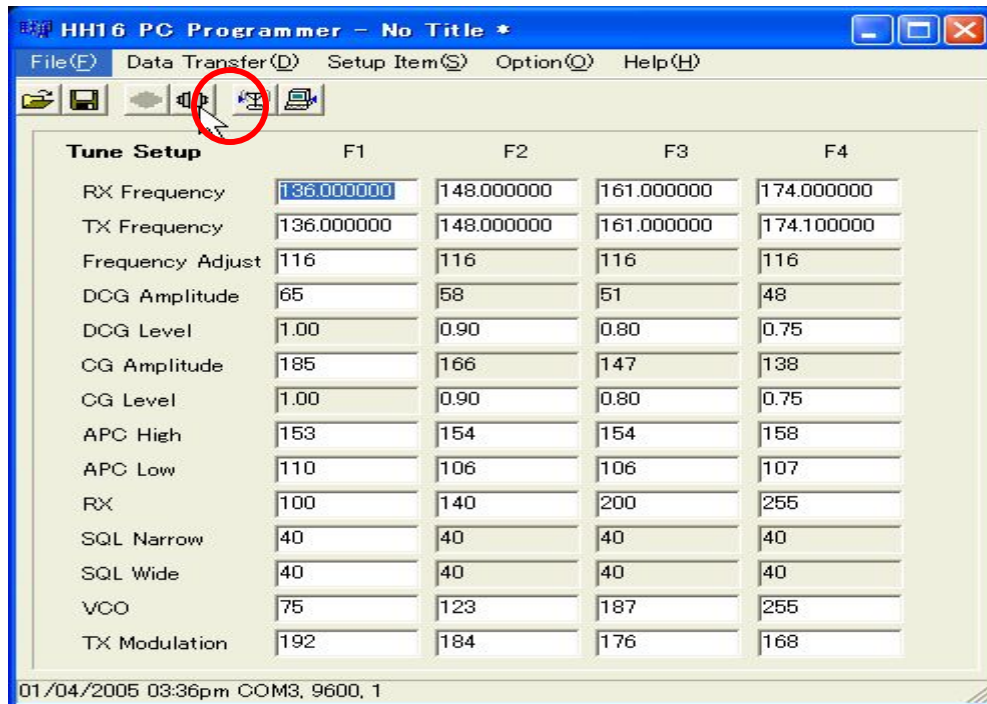


Fig.7