


Internal Photos

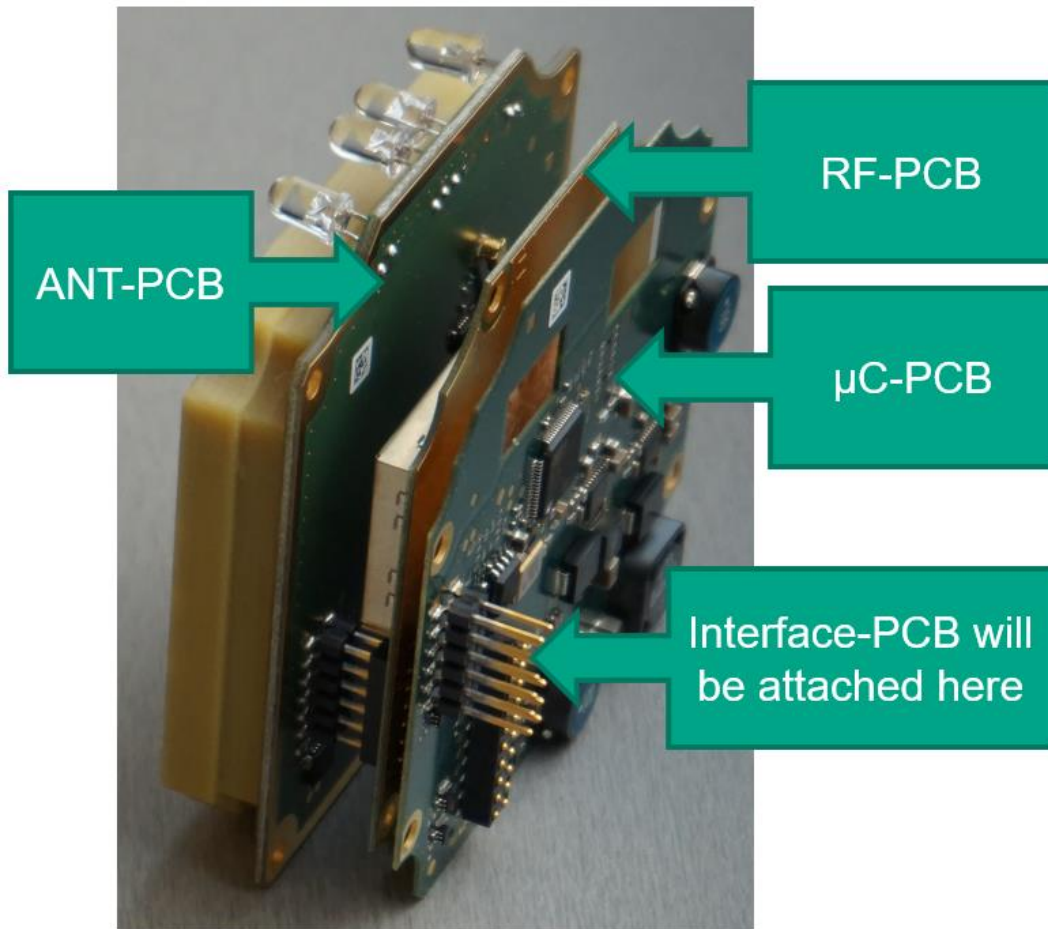
UHF RFID Reader Module
#70115658 SUBA F F190-UHF RF92 FR2
FCC ID: IREIURF190
IC ID: 7037A-IURF190

CONFIDENTIAL acc. to ISO	Only valid as long as released in EDM!	scale:	date: 2020-10-08
 PEPPERL+FUCHS	Internal Photos #70115658	respons	
Mannheim		DF.MSH	sheet 1 of 6

template: FTM-0027B

1 Overview

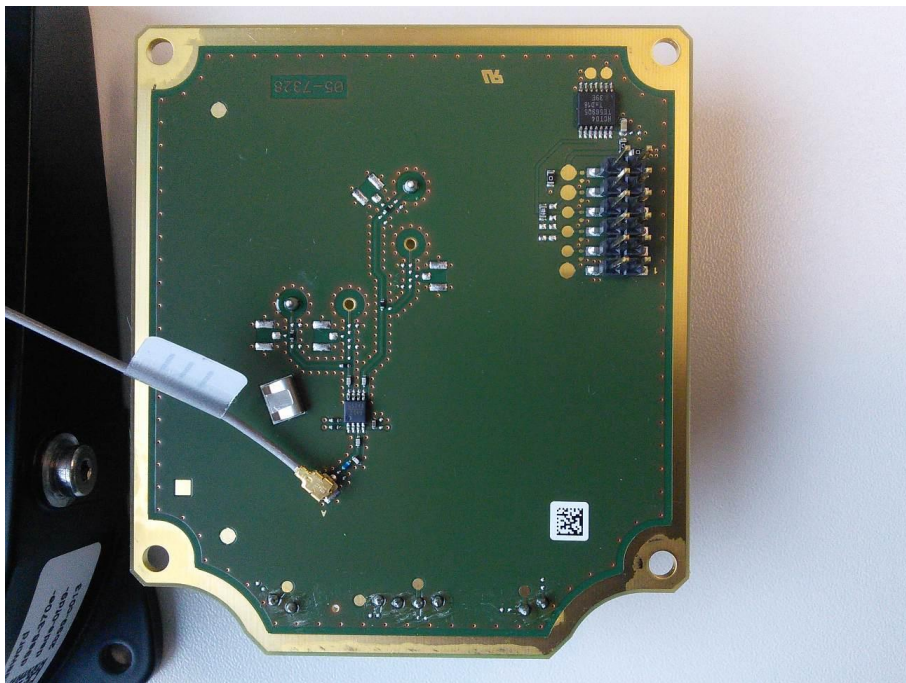
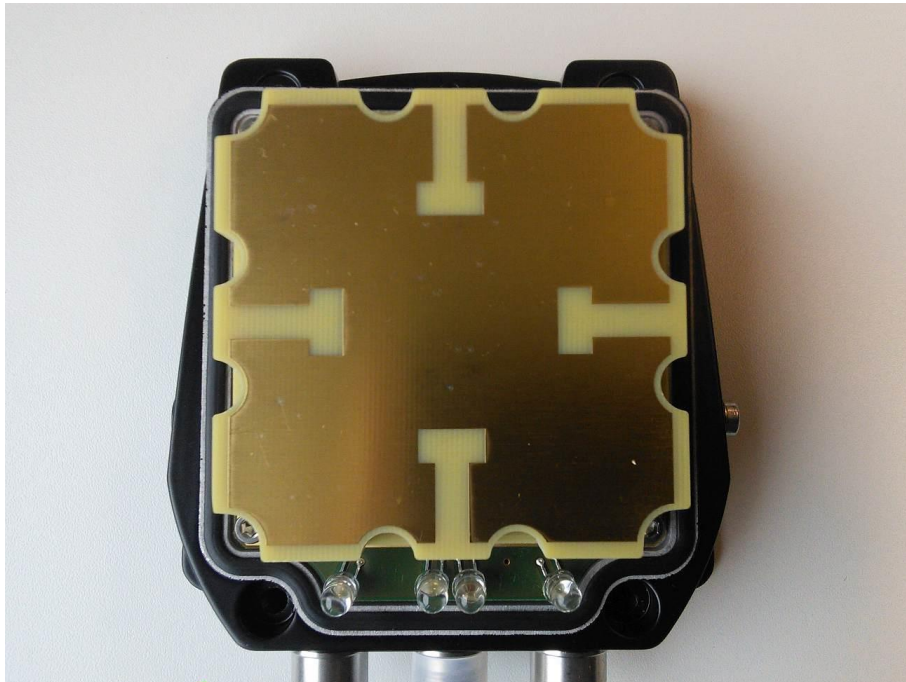
The radio module consist of 3 PCBs as shown in block diagram.




CONFIDENTIAL acc. to ISO	Only valid as long as released in EDM!	scale:	date: 2020-10-08
PF PEPPERL+FUCHS Mannheim	Internal Photos #70115658	respons	
		DF.MSH	sheet 2 of 6

template: FTM-0027B

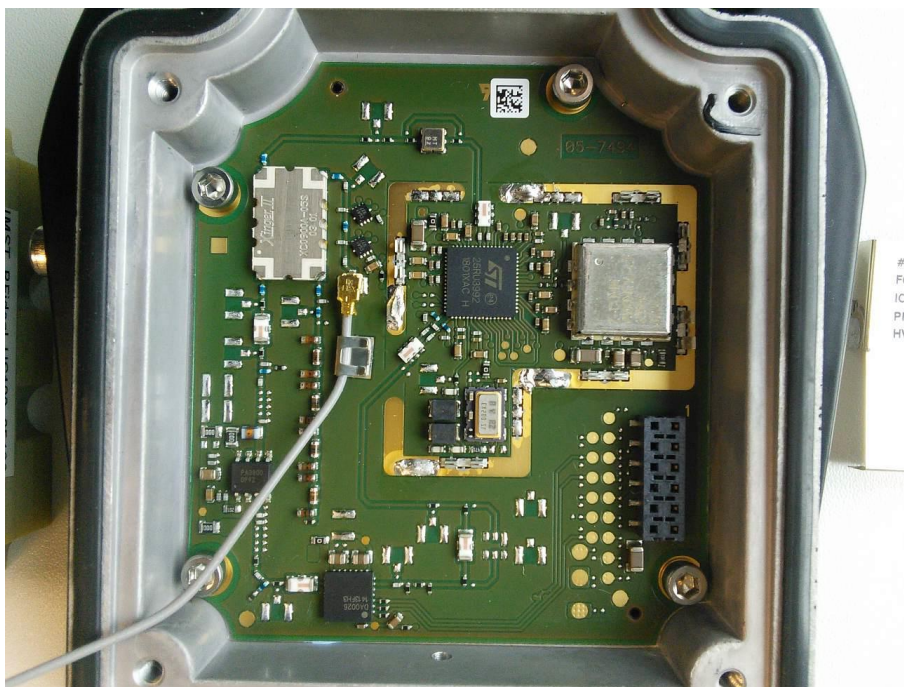
2 ANT-PCB




CONFIDENTIAL acc. to ISO	Only valid as long as released in EDM!	scale:	date: 2020-10-08
 PEPPERL+FUCHS Mannheim	Internal Photos #70115658	respons	
		DF.MSH	sheet 3 of 6

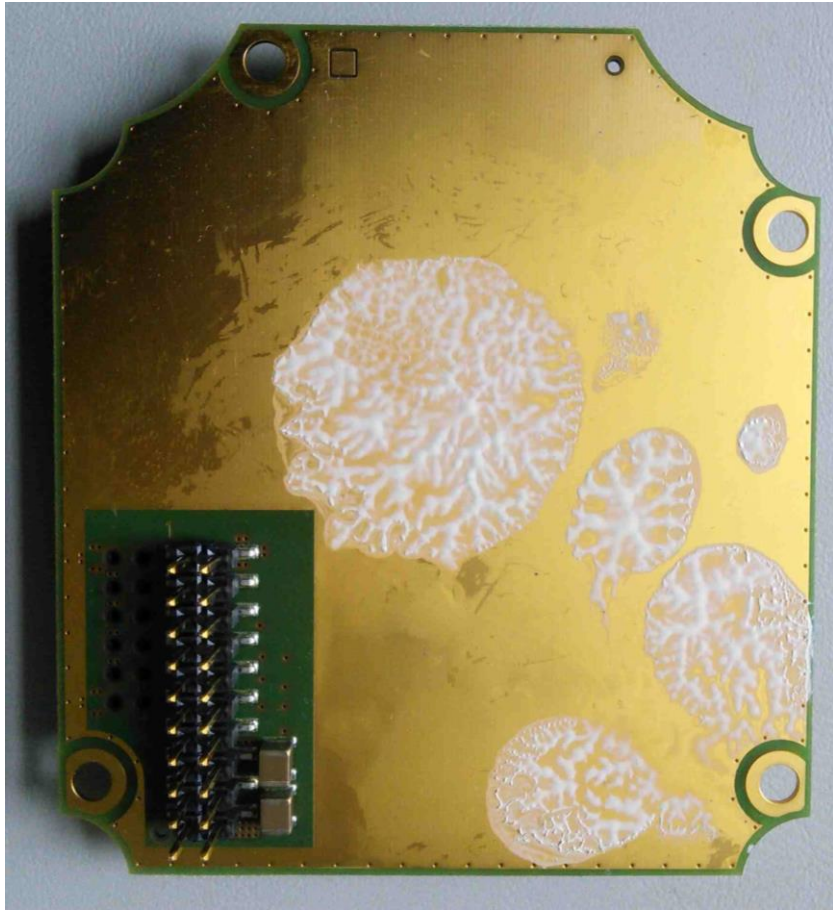
template: FTM-0027B

3 RF-PCB



#70115658
FCC-ID: IREIURF190
IC-ID: 7037A-IURF190
PMN: IURF190
HVIN: IURF190

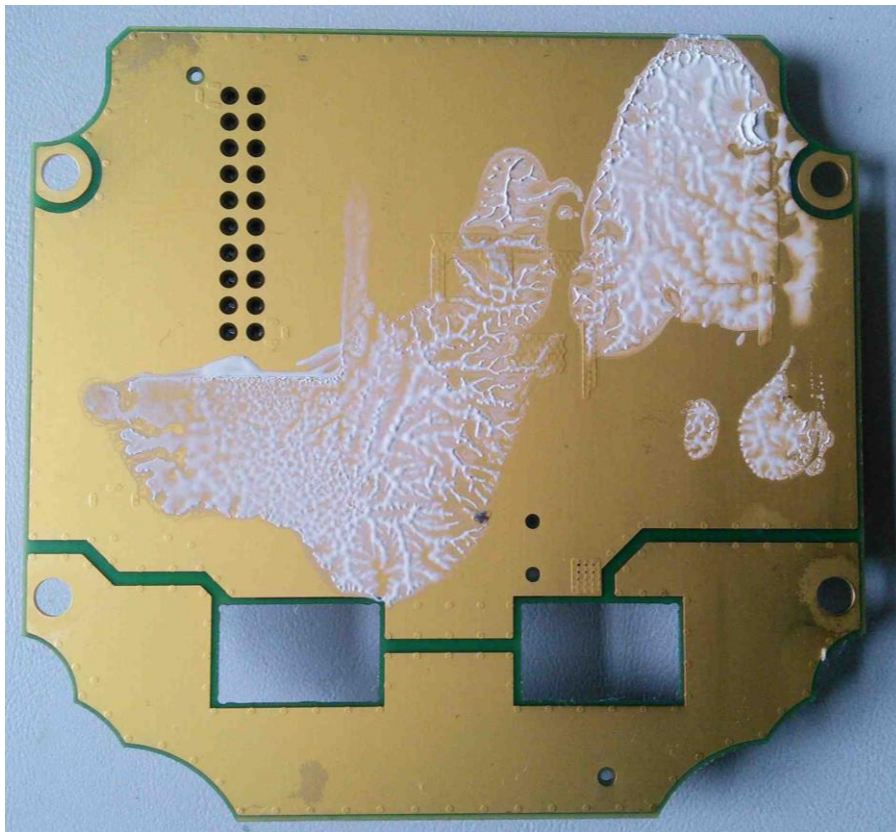
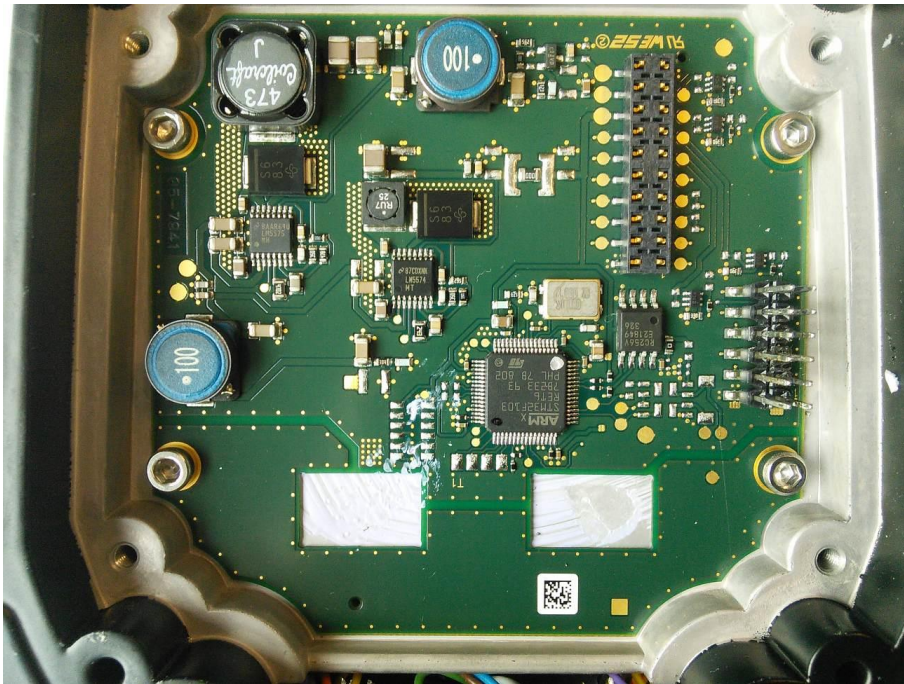
CONFIDENTIAL acc. to ISO	Only valid as long as released in EDM!	scale:	date: 2020-10-08
 PEPPERL+FUCHS Mannheim template: FTM-0027B	Internal Photos #70115658	respons	
		DF.MSH	sheet 4 of 6




CONFIDENTIAL acc. to ISO	Only valid as long as released in EDM!	scale:	date: 2020-10-08
PF PEPPERL+FUCHS Mannheim	Internal Photos #70115658	respons	
		DF.MSH	sheet 5 of 6

template: FTM-0027B

4 μ C-PCB



CONFIDENTIAL acc. to ISO	Only valid as long as released in EDM!	scale:	date: 2020-10-08
 PEPPERL+FUCHS Mannheim	Internal Photos #70115658	respons	
		DF.MSH	sheet 6 of 6

template: FTM-0027B