

Workstation Computer

RB14

User's Guide



Notice

The company reserves the right to revise this publication or to change its contents without any notice. Information contained herein is for reference only and does not constitute a commitment on the part of the manufacturer or any subsequent vendor. They assume no responsibility or liability for any errors or inaccuracies that may appear in this publication nor are they in anyway responsible for any loss or damage resulting from the use (or misuse) of this publication.

Any of the software described in this manual is sold or licensed "as is". Should the programs prove defective following purchase, the buyer (and not the manufacturer, its distributor, or its dealer) assumes the entire cost of all necessary servicing, repair and any incidental or consequential damages resulting from any software defects.

Brand and product names mentioned in this publication may or may not be copyrights and/or registered trademarks of their respective companies. They are mentioned for identification purposes only and are not intended as an endorsement of that product or its manufacturer.

Copyright© 2020, MilDef Crete Inc. All rights reserved.

Trademarks

All other brand and product names are trademarks or registered trademarks of their respective companies.

Radiation Exposure Statement

This equipment complies with FCC radiation exposure limits set forth for an uncontrolled environment. This equipment should be installed and operated with minimum distance 20cm between the radiator & your body.

RF exposure warning

This equipment must be installed and operated in accordance with provided instructions and antenna(s) used for this transmitter must be installed to provide a separation distance of at least 20 cm from persons and must not be co-located or operating in conjunction with any other antenna or transmitter. End-users and installers must be provided with antenna installation instructions and transmitter operating conditions for satisfying RF exposure compliance.

Regulatory Information/ Disclaimers

Installation and use of this workstation must be in strict accordance with the instructions included in the user documentation provided with the product. Any changes or modifications (including the antennas) made to this device that are not expressly approved by the manufacturer may void the user's authority to operate the equipment.

The manufacturer is not responsible for any radio or television interference caused by unauthorized modification of this device, or the substitution of the connecting cables and equipment other than manufacturer specified. It is the responsibility of the user to correct any interference caused by such unauthorized modification, substitution or attachment. Manufacturer and its authorized resellers or distributors will assume no liability for any damage or violation of government regulations arising from failing to comply with these guidelines.

Federal Communications Commission regulatory compliance

This device complies with part 15 of the FCC Rules. Operation is subject to the following two conditions: (1) This device may not cause harmful interference, and (2) this device must accept any interference received, including interference that may cause undesired operation.

The device has been tested in accordance to FCC regulation Part 15 Subpart B, Subpart C, Subpart E and found the test results indeed meet the limitation of the relevant test standard(s) listed below:

FCC 47 CFR Part 15 Subpart B (15.109/15.107)

FCC 47 CFR Part 15 Subpart C (2019)

FCC 47 CFR Part 15 Subpart E (2019)

Note:

This equipment has been tested and found to comply with the limits for a class B digital device, pursuant to part 15 of the FCC Rules. These limits are designed to provide reasonable protection against harmful interference in a residential installation. This equipment generates uses and can radiate radio frequency energy and if not installed and used in accordance with the instructions, may cause harmful interference to radio communications. However, there is no guarantee that interference will not occur in a particular installation. If this equipment does cause harmful interference to radio or television reception, which can be determined by turning the equipment off and on, the user is encouraged to try to correct the interference by one or more of the following measures:

- Reorient or relocate the receiving antenna.
- Increase the separation between the equipment and receiver.
- Connect the equipment into an outlet on a circuit different from that to which the receiver is connected.
- Consult the dealer or an experienced radio/TV technician for help to assure continued compliance, any changes or modifications not expressly approved by the party responsible for compliance could void the user's authority to operate this equipment. (Example - use only shielded interface cables when connecting to computer or peripheral devices).

Important:

Changes or modifications to this product not authorized by MilDef could void the electromagnetic compatibility (EMC) and wireless compliance and negate your authority to operate the product.

In order to maintain compliance with FCC regulations, compliant peripheral devices and shielded cables must be used with this equipment.

CE Declaration of Conformity

The device is hereby confirmed to comply with the requirements set out in the Council Directive on the Approximation of the Laws of the Member States relating to Electromagnetic Compatibility Directive (2014/30/EC) and Complies with the essential requirements of Article 3 of the RED 2014/53/EC Directive, if used for its intended use and that the following standards have been applied:

EN55032 Class B: 2015/A11:2020

EN55024 Class B: 2010/A1:2015

EN 62368-1 2014/ A11:2017

EN 300 328 V2.2.2 2019-07

EN 301 893 V2.1.1:2017-05

EN 303 413 V1.1.1:2017-06

EN 50332-2:2013

EN 301 489-1 V2.2.3 (2019-11)

EN 301 489-17 V3.1.1 (2017-02)

EN 301 489-19 V2.1.1 (2019-04)

EN62311 2008

Power Conservation

This workstation consumes less power compared to conventional consumer workstations. The power consumption may be further reduced by properly configuring the Power Management Setup.

It is recommended that the power saving features be enabled even when not running on battery power. Power Management features can conserve power without degrading system performance.

Power Safety

There are specific power requirements for your workstation:

- Only use an approved AC adapter designed for this workstation.
- There is a 3-prong grounded plug for the AC adapter. The 3rd prong is an important mechanism for ensuring product safety. Please do not neglect the importance of this mechanism. If you are unable to access a compatible outlet, please hire a qualified electrician to install a compatible outlet for you.
- When unplugging the AC power cord, please make sure to disconnect the cord by pulling from the plug head instead of pulling from the wire to prevent wire damage.
- Make sure the power outlet and any other extension cord(s) you use can support the total current load of all the connected devices.
- Before cleaning the workstation, please make sure it is disconnected from any external power source.



Warning

Before any upgrade procedures, make sure the power is turned off, and all the cables are disconnected. Also, it is advisable to remove your battery to prevent your workstation from accidentally turning on.

Battery Precautions

- Only use batteries designed for this workstation. Using incompatible battery types may cause explosion, leakage or damage to the workstation.
- Do not remove the battery from the workstation while the workstation is powered on.
- Do not continuously use a battery that has been dropped, or that appears damaged (e.g. bent or twisted) in any way. Even if the workstation is able to continuously work with a damaged battery, the circuit damage may occur and possibly cause fire.
- Always use the charger designed for this workstation to recharge the battery. Incorrect recharging may cause the battery to explode.
- Do not try to repair a battery by yourself. For battery service or replacement, please contact with your service representatives.
- Please dispose damaged battery promptly and carefully. Explosion or leakage may occur, if the battery is improperly handled or discarded.

Notice:

For safety, charging will stop if the internal temperature of the battery is out of range ($<0^{\circ}\text{C}$; $>50^{\circ}\text{C}$). Please note that charging could have stopped before the ambient temperature reaching these boundaries because the internal temperature of the battery does not equal to the ambient temperature.



Battery Disposal & Caution:

The product that you have purchased contains a rechargeable battery. The battery is recyclable. At the end of its service life, under various state and local laws, it may be illegal to dispose of this battery into the municipal waste stream. Check with your local solid waste officials for details in your area for recycling options or proper disposal. Danger of explosion may possibly occur, if the battery is incorrectly replaced. Replace only with the same or the equivalent battery recommended by the manufacturer. Discard the used battery according to the manufacturer's instructions.

Environmental Information, Material Safety & Recycling

All materials used in the manufacturing of this equipment are recyclable or environmentally friendly. Please recycle the packing materials in accordance with local regulations at the end of the product's service life.

Notice:

- The equipment may contain insignificant amount of hazardous substances for health and environment below control level.
- To avoid spreading such substances into the eco system and to minimize the pressure on the natural environment, you are encouraged to reuse or recycle most of the materials in a safe way after an end of the product life.
- For more information on collection, reuse and recycle of materials, please consult local or regional waste administrations for more information. You can also contact your dealer for more information on the environmental details of the equipment.
- The symbol of the crossed out wheeled bin indicates that the product (electrical and electronic equipment) should not be placed in municipal waste. Please check local regulations for disposal of electronic products.



TABLE OF CONTENTS

TABLE OF CONTENTS.....	8
CHAPTER ONE - GETTING STARTED.....	10
UNPACKING	10
QUICK OPERATION.....	10
APPEARANCE OVERVIEW	12
CHAPTER TWO - OPERATING INFORMATION	18
WORKPLACE.....	18
RUGGEDNESS.....	18
WORK WITH POWER BUTTON	19
OPERATING SYSTEM	20
BOOT UP AND POST.....	20
SHUT DOWN.....	21
SLEEP/HIBERNATE	22
KEYBOARD	23
LED INDICATORS	24
MANAGING SOLID STATE DRIVE (SSD).....	24
RTC	25
SYSTEM MANAGER.....	26
SETTING WAKE ON LAN	29
SMART CARD READER (OPTIONAL).....	30
CHAPTER THREE - MANAGING POWER.....	31
AC ADAPTER	31
BATTERY	32
BATTERY RECALIBRATION	34
POWER CONSERVATION	36
SUPPORTING ACPI	36
CHAPTER FOUR - BIOS SETUP	38
MAIN MENU	38
ADVANCED MENU.....	39
CPU Configuration Sub-Menu	40
PCH-FW Configuration Sub-Menu	41
Trusted Computing Sub-Menu	41
RF Device Control Sub-Menu	42
EC Thermal Control Sub-Menu	42
AC In Boot Control Sub-Menu.....	43
USB Power Control Sub-Menu	43
Battery Recalibration Sub-Menu.....	44
IT8786 Super IO Configuration Sub-Menu.....	44
Intel ® BIOS Guard Technology Sub-Menu	45
Network Stack Configuration Sub-Menu	45
CSM Configuration Sub-Menu	46

Intel ® I210 Gigabit Network Connection Sub-Menu.....	46
Intel ® Ethernet Connection (7) I219-LM Sub-Menu	47
CHIPSET MENU	48
PCH-IO Configuration Sub-Menu	48
SECURITY MENU	49
HDD Security Configuration Sub-Menu	49
Security Boot Sub-Menu	51
BOOT MENU	52
SAVE & EXIT MENU	53

CHAPTER FIVE - DRIVERS AND APPLICATIONS 54

CHAPTER SIX - SPECIFICATIONS 55

PLATFORM.....	55
PROCESSOR	55
CHIPSET	55
MEMORY	55
GRAPHICS	55
DISPLAY	55
STORAGE	56
KEYBOARD	56
TOUCHPAD	56
FAN	56
I/O PORTS.....	57
POWER	58
CASE	58
ENVIRONMENTAL.....	58
CERTIFICATIONS	59
DIMENSIONS AND WEIGHT.....	59
MATERIALS AND RECYCLING	59

CHAPTER SEVEN - OPTIONAL DEVICES..... 60

GRAPHICS	60
COMMUNICATION.....	60
MEMORY CARD.....	60
TRUST PLATFORM MODULE (TPM2.0).....	61
BVA & SURGE PROTECTOR MODULE	61
SMART CARD READER.....	61
MULTI BATTERY CHARGER (MCRW).....	62
COM 3/4 ADDITIONAL SERIAL PORTS	62

CHAPTER EIGHT - MAINTENANCE AND SERVICE..... 63

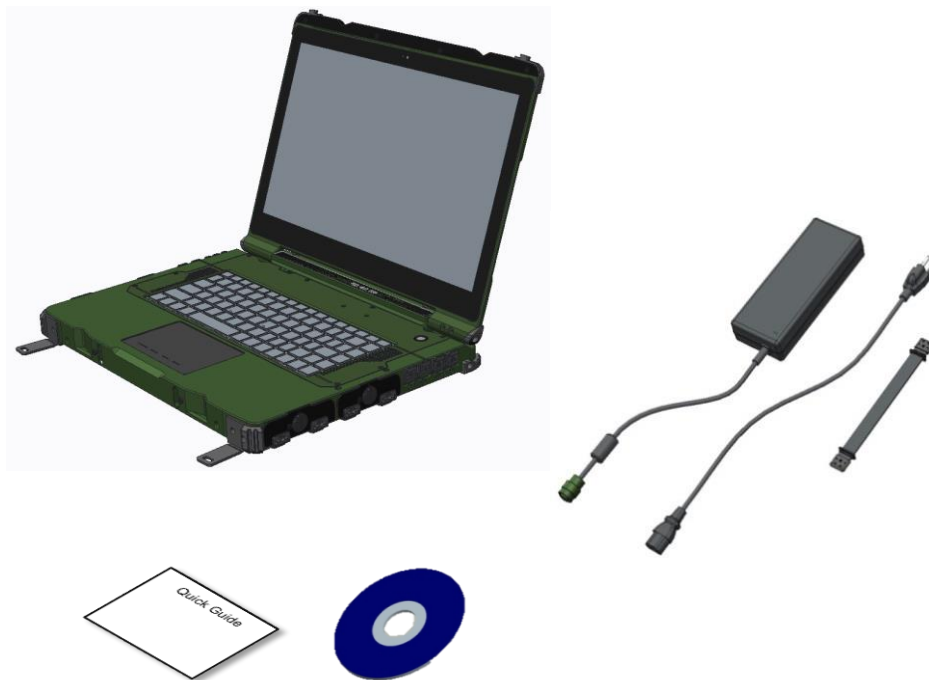
CLEANING.....	63
TROUBLESHOOTING.....	63
RMA SERVICE	64

Chapter One - Getting Started

Unpacking

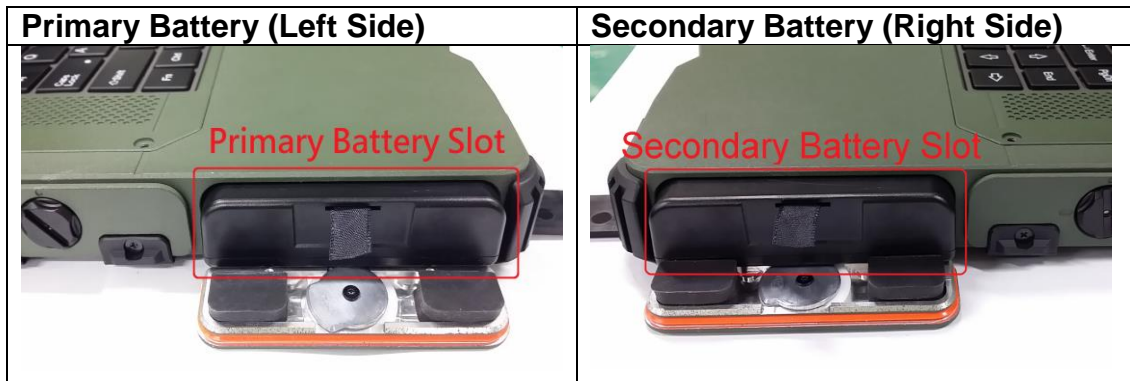
The following components are along with your workstation. If there is any missing or damaged, please notify the dealer immediately.

- Workstation Unit
- AC Adapter
- AC Power Cord
- Utility DVD
- Quick Guide
- Handle



Quick Operation

- Open the battery cover, insert the battery, and secure the battery cover by tightening the screw.
- Connect the AC adapter with the workstation and start charging the battery for at least 10 minutes.
- Turn ON the workstation by pressing the power switch.

**Note:**

- *It is recommended to have the battery fully charged at the first time for the best battery performance.*
- *Drivers or applications installation may be necessary for further operation.*

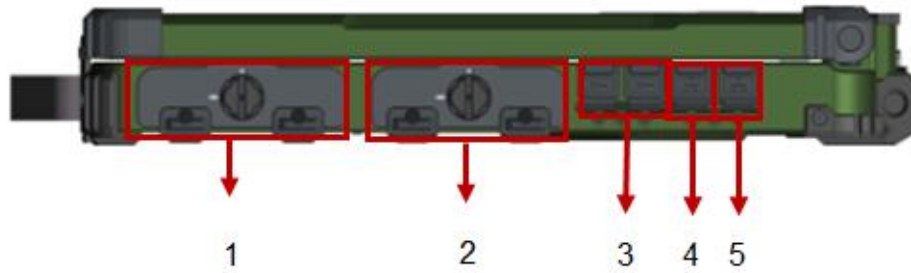
Appearance Overview

Display and Base

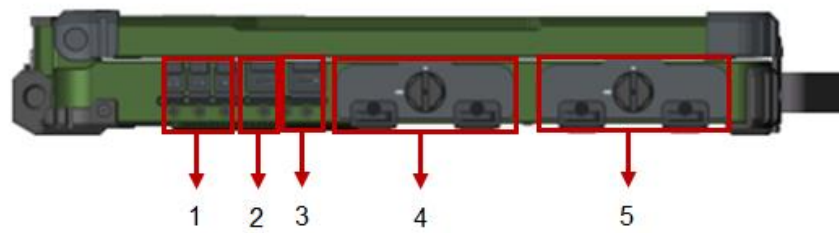


1. Embedded Antennas (Optional): GPS, WiFi/ Bluetooth x 2
2. LED Indicators
3. Power Button (Black)
4. Touchpad
5. Left-click and Right-click

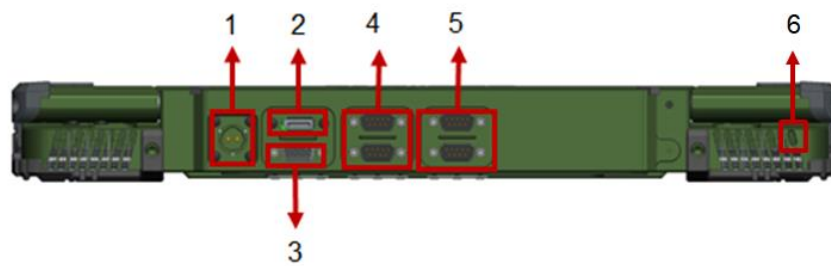
Right View



1. 2nd Battery
2. Optional 3rd SATAIII SSD
Optional 4th SATAIII SSD
3. USB 3.1 Gen. 2 x 2
4. Optional GLAN x1
5. GLAN x 1

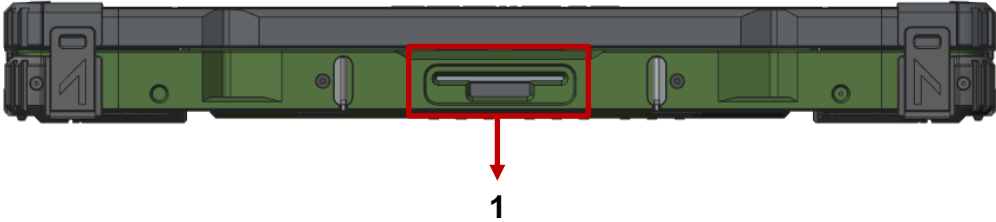
Left View

1. Microphone (Mini Jack) x 1
Audio output (Mini Jack) x 1
Line-in Jack (Mini Jack) x 1
2. USB 3.1 Gen. 2 x 1
3. USB 3.1 Gen. 2 x 1 (Fast Charging)
4. Standard 1st SATAIII SSD
Optional 2nd SATAIII SSD
5. Battery

Rear View

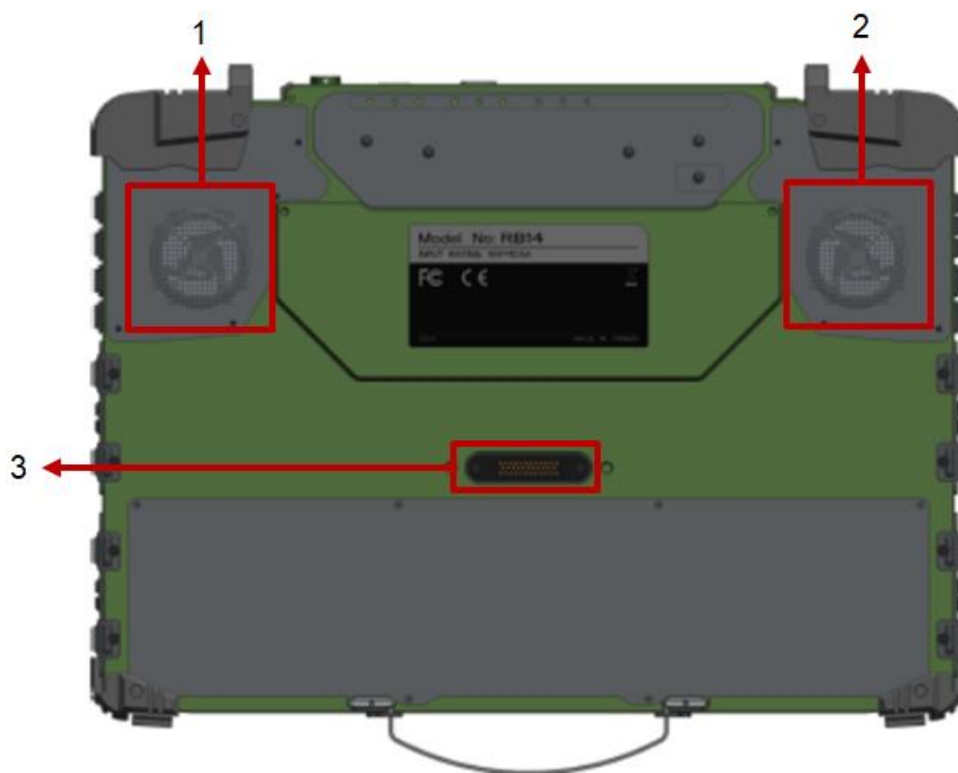
1. DC-in Conn. (Military 2 pin)
2. Display Port x 1
3. VGA x 1
4. Serial DB9 x 2 (Default: COM1~2)
5. Optional Serial DB9 x 2 (Default: COM3~4)

Front View



- 1. Optional Smart Card Reader

Bottom View



1. 2nd FAN
2. 1st FAN
3. D/U Port

Chapter Two - Operating Information

Workplace

A clean and moisture-free environment is preferred. Make room for air circulation. Remember to avoid areas from:

- Sudden or extreme changes in temperature.
- Extreme heat.
- Strong electromagnetic fields (near television set, motor rotation area, etc.).
- Dust or high humidity.

If it is necessary to work in a hostile environment, please regularly maintain your workstation by cleaning dust, water, and etc. to keep it in an optimal condition.

Ruggedness

This workstation is designed with rugged features such as vibration, shock, dust, and rain/ water protection. However, it is still necessary to provide appropriate protection while operating in harsh environments.

The workstation is also designed to withstand rainfall from top with mild wind blowing only. Please keep the keyboard facing up, i.e. normal operating direction, to maintain water resistance. NEVER immerse the unit in water, or spray water at an upside-down system. Doing so may cause permanent damage.

All connectors could be corroded if being exposed to water or moisture. Corrosion is accelerated if the power is ON. Please take proper water-resistant measures for cable connections. The DC jack and cables are sealed and may be operated with water splashing while attached. All port covers should be in place when no cable is attached.

Work with Power Button

The device is equipped with a heater kit to enable work under low temperature. The heater will heat up the LCD to the temperature for booting up the system. Also, the heater will constantly monitor LCD temperature. Once the temperature becomes lower, the heater will heat up again to maintain the temperature for operation.

Note:

- The device will boot up once you press the power button.
- When ambient temperature is under 5 °C (the default setting for your workstation), the system may not boot up immediately. System will beep with Heater LED light flashing orange to indicate that the heater is in operation. After heating for 5 minutes, the system will be forced to boot up automatically.
- In emergency situations, you can skip the heating process by pressing and holding the power button for 9~11 seconds then release. The speaker will beep with a special sound to signify that the heating process has been skipped (Please note that not all devices are guaranteed to work properly in this case).
- Press the power button again during the heating process will shut down the computer.

The following is a list of functions associated with your workstation's power button:

1. Press and hold for 9 ~ 11 seconds:
The system will skip heating process and force boot up.
2. Press and hold for 5 ~ 8 seconds:
Enable/Disable the sound of Heater.
3. Press and hold for 4 seconds under OS:
Shut down the system.
4. Press the power button for functions including:
 - a. Power on the system.
 - b. Force Shut Down.
 - c. Sleep/Hibernate (Dependent on OS settings).

Operating System

Your workstation is designed to operate with Microsoft Windows 10 64-bit/Windows Server Operating System. Please connect your workstation with an external USB-interface drive, such as a USB thumb drive, and start the OS installation.

Boot Up and POST

Boot up

The workstation turns ON and loads the operating system (such as Windows) into the system memory. This start-up procedure is called “boot up”.

The ROM BIOS Power on Self-Test (POST)

Each time the workstation powers on, it automatically performs a self-test of its memory and hardware devices.

Fan Self-Test

If a fan malfunction is detected, the system will stop and show a message to notify the user. It's not a recommended choice, but users can still decide to continue by pressing any key with fan malfunction.

If a fan malfunction is detected, your screen will show this information:



Version Copyright (C) American Megatrends, Inc.
BIOS Date: Ver.:
Press <F2> to enter setup, Press <F4> to select boot device
<<<FAN – 2 malfunction, user right-hand side >>>
Press any key to continue.

Note:

- *RB14 with nVIDIA® GeForce® GTX1050 MXM Card does not support multiple monitors before entering OS, so external monitor is unable to display in BIOS.*

Shut down

Directly click “Shut down” from your OS to turn OFF the power of your workstation. Before shutting down, please remember to save any unfinished works and close the applications to prevent your SSD from suffering possible data loss or damage. “Shut down” will turn OFF power of your workstation. If you want to start your workstation again, you need to turn it ON again by pressing the power button.

Force Shut Down

In the event that your workstation hangs or stops responding, you can perform a force shut down by pressing and holding the power button for 5 seconds. Please note that any unsaved work or data will be lost this way.

Sleep/Hibernate**Sleep**

Under “Sleep” mode, the system will temporarily save your work into the workstation’s RAM. If you want to start your workstation again, please press the power button to resume. Under Windows 10, you can enter this mode by directly clicking:

Move the cursor to the lower left or lower-left corner of the screen, and then click “Settings” => Click “Power” => Click “Sleep”.

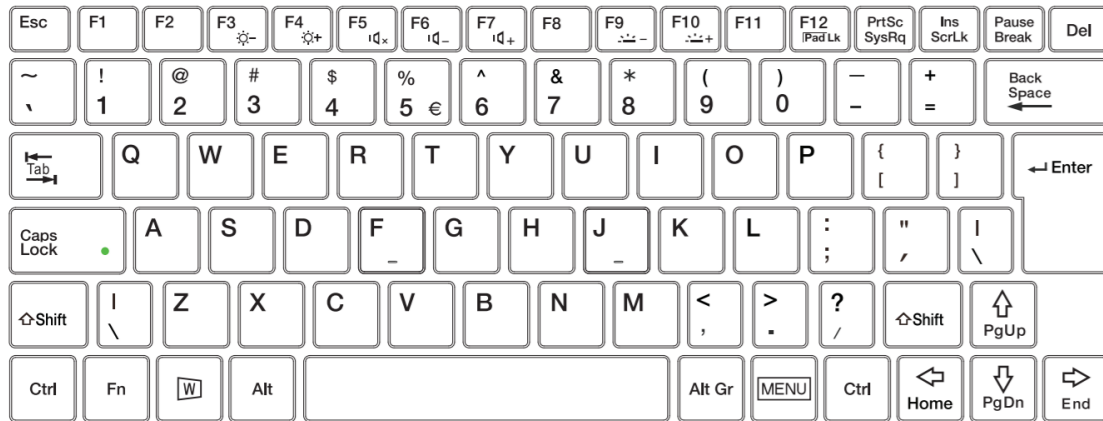
Hibernate

Under “Hibernate” mode, the system will save your work into SSD. If you want to start your workstation again, you need to press the power button. Under Windows, you can enter “Hibernate” mode by directly clicking:

Move the cursor to the lower left or lower-left corner of the screen, and then click “Settings” => Click “Power” => Click “Hibernate”.

Keyboard

The keyboard is 83-Key full size with LED backlight. A sample layout is shown below.






Function Key Combinations

Key	Description
[Fn] + [F3]	Decrease LCD brightness
[Fn] + [F4]	Increase LCD brightness
[Fn] + [F5]	Mute/Unmute
[Fn] + [F6]	Volume down
[Fn] + [F7]	Volume up
[Fn] + [F9]	Decrease keyboard Backlight brightness
[Fn] + [F10]	Increase keyboard Backlight brightness
[Fn] + [F12]	Touchpad ON/OFF

LED Indicators

Your Workstation is designed with LED indicators to show workstation status. The description of LED indicators and colors are provided for your operational reference.

LED Indicator	Description
	Power/ S3 Indicator: Green/ Flashing Green*
	SSD/Heater Indicator: Green/Orange
	Charger/ Battery Low Indicator: Orange/ Flashing Orange

*When your workstation sleeps, the S3 indicator pulsates on and off slowly.

Managing Solid State Drive (SSD)

RB14 has 4 slots for 2.5" type/ 7mm height SATAIII SSD. One SSD was pre-installed as the standard configuration. You can have the additional SSD installed, up to four SSDs.



Note:

- You need to purchase the SSD bracket for the additional SSD.
- RB14 supports up to 4 SSDs, the boot order will be SSD1, SSD2, SSD3 and SSD4. Hence we recommend you put your Operating System SSD on the SSD slot 1. (It takes time for system to find the right one if you put the Operating System SSD at the other slot.)

For setting up the RAID, please use the Intel® RST (Rapid Storage Technology) to lay your system foundation on RAID 0, 1, 5, 10 configurations. There are two boot modes to select, Legacy & UEFI.

Please follow the steps to use RAID function:

In BIOS Set Up:

1. Insert the required number of SSDs for RAID 0, 1, 5, 10, respectively.
2. Power on the workstation, and press [F2] to enter BIOS.
3. Select **Chipset => PCH-IO Configuration => SATA And RST Configuration => SATA Mode Selection => Intel RST Premium With Intel Optane System Acceleration => Save Changes and Reset**
4. Reset the workstation, and press [F2] to enter BIOS.
5. Select **Advanced menu => Intel Rapid Storage Technology => Create RAID Volume**
6. Now, you can setup RAID configuration following the on-screen instructions. Or, you can refer to the User Guide of Intel® Rapid Storage Technology on the Intel official website.

Note:

- *It is recommended to use the same brand/size SSD to configure the RAID volume.*
- *Please refer to the official User Guide from Intel website for the detailed setting information.*

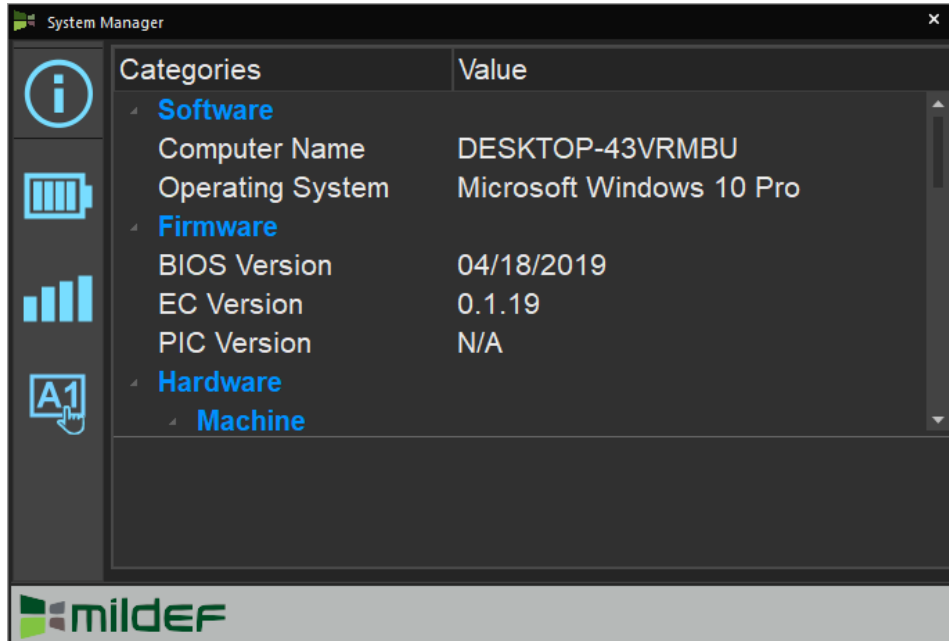
RTC

Battery backed up RTC (Real Time Clock/Calendar) is built in an on-board CMOS (Complementary Metal Oxide Semiconductor) chip. The RTC keeps track of the time and date while the workstation is off. The CMOS chip also stores system setup information.

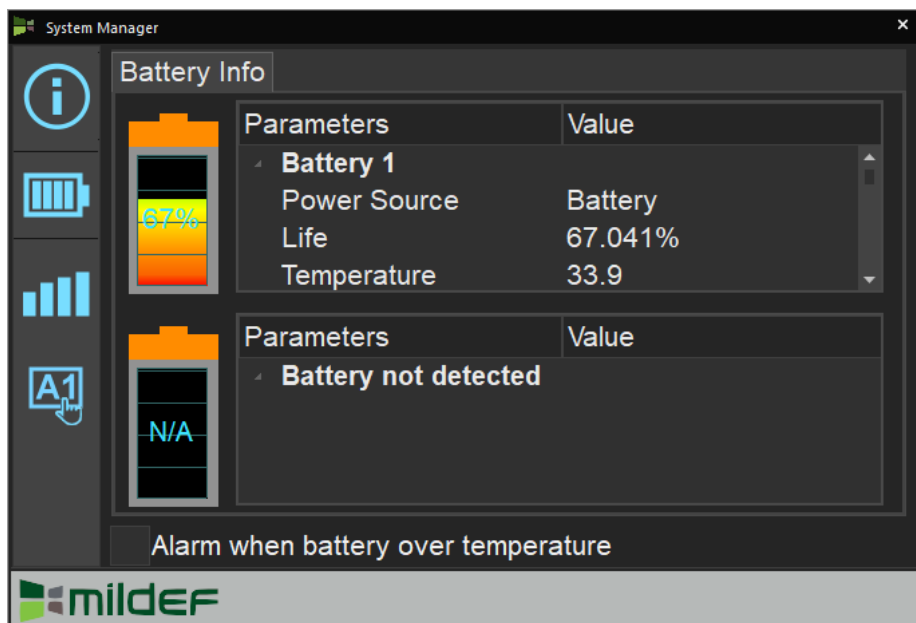
System Manager

System Manager is an app which allows user to access information (System, battery), and set RF device, function keys easily.

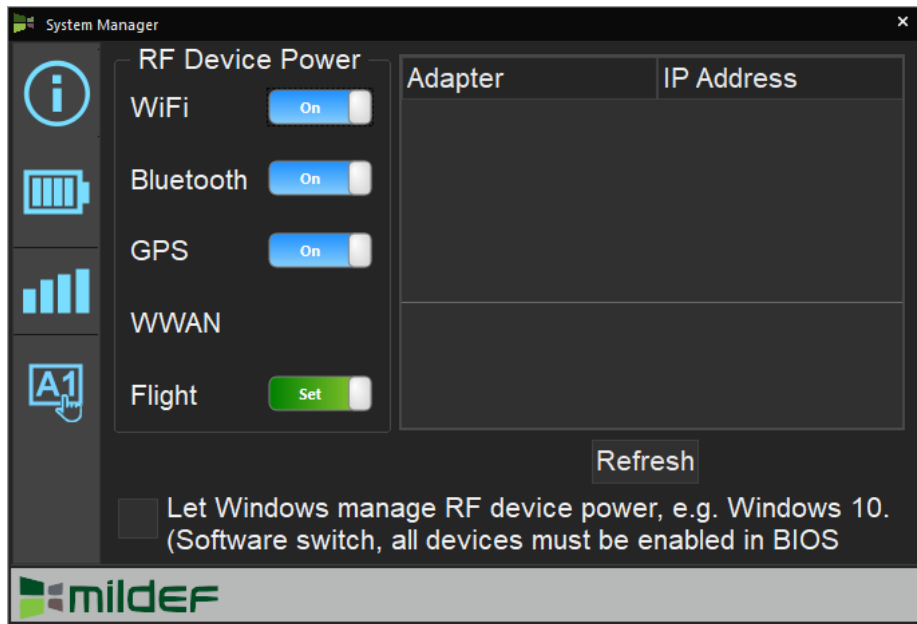
1. System information:



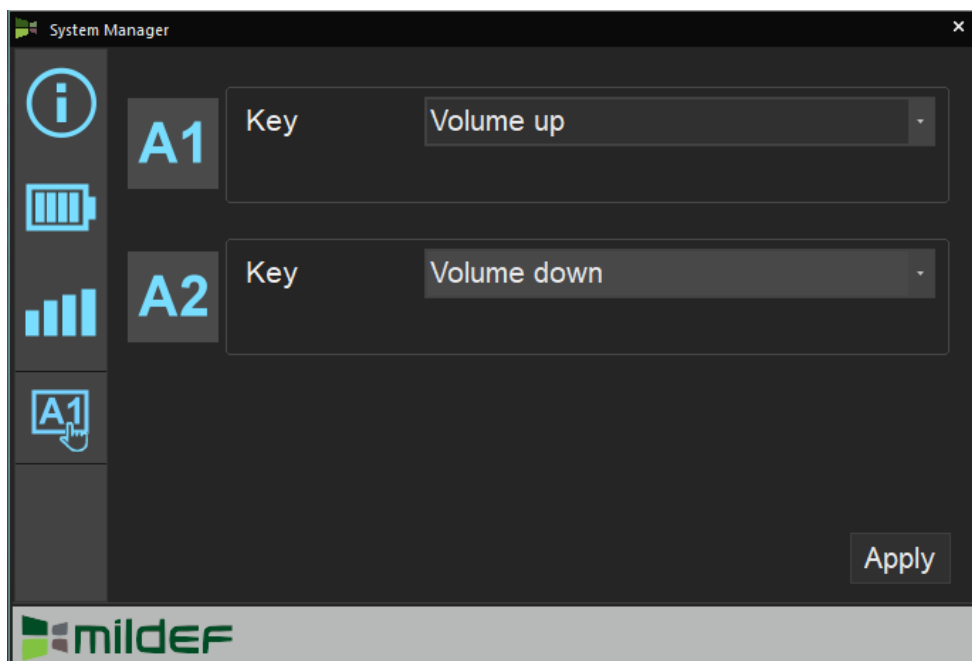
2. Battery information:



3. RF Device control panel:



4. Function key control panel.



Available Function Items List

None
Open/ Execute a selected file
Open URL in default browser
Change display output
Brightness up
Brightness down
Volume up
Volume down
Volume mute
Launch on-screen keyboard
Launch Windows Mobility Center
Launch File Explorer

Note:

- *“System manager” is a universal app so some pages may be different according to your system. For example, function key setting page will be unavailable for those devices without function key.*

Setting Wake on LAN

Wake-on-LAN (WoL) is an Ethernet or Token ring workstation networking standard that allows a workstation to be turned on or awakened by a network message. Follow instructions to set WoL.

1. Enter BIOS set up → Advanced → Intel ® I210 Gigabit Network Connection → NIC Configuration → Set Wake on LAN enabled → Save and Exit BIOS

Advanced		Aptio Setup Utility
Link Speed Wake on LAN	[Auto Negotiated] [Enabled]	Specifies the port speed used for the selected boot protocol.
		→←: Select Screen ↑↓: Select Item Enter: Select -/+ : Change Opt. F1: General Help F2: Previous Values F3: Optimized Defaults F4: Save & Exit ESC: Exit

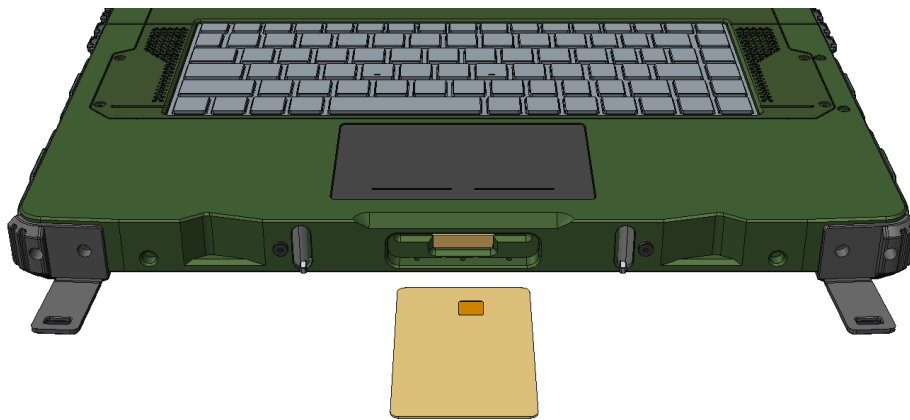
2. Windows System → Control panel → System → Device Manager → Network adapters → double click “network adapters cards”
3. Power Manager → check “Allow the workstation to turn off this device to save power” and “Allow this device to wake workstation”
4. With MAC address of the target workstation, you can send Magic Packet to wake up your RB14 by suitable software.

Smart Card Reader (Optional)

RB14 has a smart card slot, with an embedded microcontroller, smart cards have the unique ability to store large amounts of data, carry out their own on-card functions (e.g., encryption and mutual authentication), and interact intelligently with a smart card reader.

To insert a smart card:

1. Locate the smart card slot on the front side of the workstation and open the protective cover.
2. Plug the smart card, with its label and embedded chip facing up into the slot.



1. When a new card is seated, use the third-party smart card software to allow your workstation to read it.

To remove a smart card:

1. Make sure that the third-party smart card software is not accessing the smart card.
2. Pull the card out of the slot.
3. Close the cover.

Chapter Three - Managing Power

AC Adapter

The AC adapter performs two functions:

- It powers the workstation from an external AC source.
- It charges the workstation battery.

The adapter automatically detects the AC line voltage (100V or 240V) and adjusts accordingly.

The following are recommended when using the AC adapter:

- Use a properly grounded AC outlet.
- Use one AC outlet exclusively for the workstation. Having other appliances on the same line may cause interference.

Connecting the AC adapter:

- Plug the AC cord to the adapter.
- Plug the other end of the AC cord into the wall outlet. Make sure the green LED on the adapter turns on.
- Attach the DC plug into the power jack of the workstation; and turn the lock ring clockwise to secure it.

Note:

- *To ensure system stability, please connect your workstation to an external power source when operating at -20 °C ambient temperature.*

Battery

The power source will automatically switch to battery when the external power source (AC adapter or optional vehicle adapter) is disconnected.

Battery Low

When the battery is nearly exhausted, the workstation gives the following “Battery Low” warnings:

- Windows battery low warning (when operating system is Windows).
- The power LED flashes.

Once the Battery Low warning occurs, please:

- Save and close the files you are currently working on.
- Plug in the AC adapter to recharge the battery.

Charging the Battery

There are two battery packs in the workstation; on the left side is the primary battery, and on the right side is the second. When the workstation is connected to AC adapter, the primary battery will be charged first, and then the second battery. When the workstation is powered by the battery, secondary will be discharged first, and then the primary one. Attach the AC adapter or vehicle adapter to charge battery, when the battery is full, battery will automatically stop charging. You could check if the battery is being charged by “battery indicator LED”, the LED is off when charging is finished.

	Charging (with power adapter attached)	Discharging (without power adapter attached)
Primary Battery (Left)	First priority	Second priority
2 nd Battery (Right)	Second priority	First priority

Optional Multi Battery Charger (MCRW)

A Multi Battery Charger is designed for the battery of RB14, with this charger, you could charge two battery packs at one time.

Battery Gauge

You may check battery status from battery gauge in Windows. Click the power/battery icon to reveal the battery gauge window.



Battery Power Saving Tips

The workstation comes with an intelligent power-saving feature. You may extend the battery life by:

- Setup power saving functions in Operating System Power Management options (e.g. Windows Power Options).
- Lower the intensity of the display by brightness control.
- Use standby option when workstation is temporarily not in use.
- Shut down the workstation when it will not be for a long-time use.

Replacing Battery

At a low battery condition, you must connect to the power adapter or swap the battery to continue your task.

Note:

- Please make sure that all the files you just modified were all already saved before swapping the battery to prevent any accidental data loss.
- If the Primary battery is not drained out, you could just swap the Secondary battery without power adapter attached.

Battery Recalibration

Battery recalibration allows a user to calibrate the GAUGE IC parameter of the battery pack. When the battery stays fully charged or in a low charge state for a long period of time, it causes the battery gauge to have some minor discrepancies. Therefore, users are recommended to carry out battery recalibration to correctly calibrate the battery GAUGE IC. To perform battery recalibration, please follow the steps as below:

1. Update BIOS & EC to the latest version xxx.xxx or later.
2. Insert the battery to the workstation, and connect it to AC adapter.
3. Enter the BIOS => Choose "Advanced menu" => Choose "Battery Recalibration" => Press "Enter".
(See Chapter4: BIOS Setup - Advanced - Battery Recalibration Sub-Menu)
4. When "Start Battery Recalibration" pop-up appears, press "Yes" to continue.
5. The recalibration is now processing. You can see the following recalibration status on the screen:
 - Calibration Frequency: How many times the calibration is processed
 - Battery Capacity: Current battery capacity
 - Battery Charge Mode: Charge/Discharge
 - Battery Learning Mode: Normal (charge)/Learn (discharge)
6. A pop-up appears when the calibration is completed. Then click "OK". Press "Yes" to reboot the workstation when "Reset Without Saving" pop-up appears.

Note:

- Do not turn off the LCD and do not remove AC adapter during the recalibration.
- One cycle of recalibration process indicates "Charge to Full => Start Learn Mode => Discharge => Complete Learn Mode => Charge to Full". It will take approx. eight hours for a cycle.
- It requires five cycles to complete the battery recalibration. Then the recalibration will stop automatically.
- If you want to terminate the calibrating, simply shut down the workstation by pressing Power Button or just press "CTRL+ALT+DEL" to restart.

Power Conservation

This workstation consumes much less power than conventional workstations. However, power consumption may be reduced by configuring the Power Management Setup properly.

It is recommended the power saving functions be enabled even when not running on battery power. Power Management will not degrade performance while saving power.

Supporting ACPI

Your workstation supports ACPI (Advanced Configuration and Power Interface) for power management. With ACPI and an ACPI-compliant operating system such as Windows, the feature will allow you to reduce the power consumption for energy saving. By supporting ACPI, the AC adapter LED and the Power indicator LED will show in different ways. The followings are the detailed description.

Sleep:

Power LED indicator is flashing Green*

*When your workstation sleeps, the S3 indicator pulsates on and off slowly.

Hibernate:

Power LED indicator is OFF.

Shut down:

Power LED indicator is OFF.

USB 3.1 Fast charging

RB14 provides one USB 3.1 fast charging port, which means that you can have faster charging than traditional standard USB 3.1 port. The following table shows details for USB 3.1 Fast Charging information:

Mode		USB3.0 Fast Charging port Features
Power off	AC	Fast charging
	Battery	No charging
Power on	AC	Normal charging
	Battery	Normal charging
S3	AC	Fast charging
	Battery	Fast charging

Note:

- *After enabling USB fast charging from USB CHARGE control in BIOS, please cold boot your workstation to activate this function.*

Chapter Four - BIOS Setup

Press **[F2]** at boot up to enter BIOS setup. Use arrow keys to select options and **[+/-]** to modify them. When finished, move to “**Exit**” and press **[Enter]** then confirm save by pressing **[Y]**.

Main Menu

Aptio Setup Utility	
Main	Advanced
<p>BIOS Information</p> <p>BIOS Vendor</p> <p>Core Version</p> <p>Compliance</p> <p>Project Version</p> <p>Build Date and Time</p> <p>Access Level</p> <p>EC Version</p> <p>Processor Information</p> <p>Name</p> <p>Type</p> <p>Speed</p> <p>Microcode Revision</p> <p>Total Memory</p> <p>ME FW Version</p> <p>ME firmware SKU</p> <p>Serial ATA Port 0</p> <p>Serial ATA Port 1</p> <p>Serial ATA Port 2</p> <p>System Date</p> <p>System Time</p>	<p>Chipset</p> <p>Security</p> <p>Boot</p> <p>Save & Exit</p> <p>Set the Date. Use Tab to switch between Date elements. Default Ranges: Year: 2005-2099 Months: 1-12 Days: dependent on month</p> <p>→←: Select Screen ↑↓: Select Item Enter: Select -/+ : Change Opt. F1: General Help F2: Previous Values F3: Optimized Defaults F4: Save & Exit ESC: Exit</p>

Note:

- The contents may vary depending on workstation configurations.
- Incorrect settings may cause system malfunction. To correct it, restore the Optimized Defaults with F3.

Advanced Menu

Aptio Setup Utility	
Main	Advanced
<ul style="list-style-type: none"> ▶ CPU Configuration ▶ PCH-FW Configuration ▶ Trusted Computing ▶ RF Device Control ▶ EC Thermal Control ▶ AC In boot Control ▶ USB Power Control ▶ Battery Recalibration ▶ IT8786 Super IO Configuration ▶ Intel® BIOS Guard Technology ▶ Network Stack Configuration ▶ CSM Configuration ▶ Intel® I210 Gigabit Network Connection - 00:16:3F:61:95:7C ▶ Intel® Ethernet Connection (7) I219-LM - 00:16:3F:61:96:5D 	<p>CPU configuration Parameters</p> <hr/> <p>→←: Select Screen ↑↓: Select Item Enter: Select -/+ : Change Opt. F1: General Help F2: Previous Values F3: Optimized Defaults F4: Save & Exit ESC: Exit</p>

Advanced Menu Selections

You can make the following selections on the Advanced Menu.

Feature	Options	Description
CPU Configuration	Disabled Enabled	CPU configuration Parameters
PCH-FW Configuration	Disabled Enabled	Configure Management Engine Technology Parameters
Trusted Computing	Disabled Enabled	Trusted Computing Settings
RF Device Control	Disabled Enabled	RF Device Control Setting
EC Thermal Control	87 C/79 C/71 C/63 C /55C	EC Thermal Control Setting
AC In Boot Control	Disabled Enabled	AC In Boot Setting
USB Power Control	Disabled Enabled	USB Power Mode Setting: For AC Mode only; Setting for S5 Enable/S5 Disable
Battery Recalibration	Yes No	Start Battery recalibration function
IT8786 Super IO Configuration		System Super IO Chip Parameters.
Intel® BIOS Guard Technology	Disabled Enabled	Enable/Disable Intel BIOS Guard Support

Feature	Options	Description
Network Stack Configuration	Disabled Enabled	Network Stack Settings
CSM Configuration	Disabled Enabled	Enable / Disable, Option ROM execution settings, etc.
Intel® I210 Gigabit Network Connection		Configure Gigabit Ethernet device parameters
Intel® Ethernet Connection (7) I219-LM		Configure Gigabit Ethernet device parameters

CPU Configuration Sub-Menu

Advanced		Aptio Setup Utility
Intel (VMX) Virtualization Technology [Enabled] Intel Trusted Execution Technology [Enabled]		Enables utilization of additional hardware capabilities provided by Intel® Trusted Execution Technology. Changes require a full power cycle to take effect.
		→←: Select Screen ↑↓: Select Item Enter: Select -/+ : Change Opt. F1: General Help F2: Previous Values F3: Optimized Defaults F4: Save & Exit ESC: Exit

PCH-FW Configuration Sub-Menu

Advanced Aptio Setup Utility	
<p>ME FW Version ME Firmware Mode ME Firmware SKU</p> <p>AMT BIOS Features [Disabled] ▶ AMT Configuration ▶ Firmware Update Configuration</p>	<p>Configure Management Engine Technology Parameters</p>
	<p>→←: Select Screen ↑↓: Select Item Enter: Select -/+ : Change Opt. F1: General Help F2: Previous Values F3: Optimized Defaults F4: Save & Exit ESC: Exit</p>

Trusted Computing Sub-Menu

Advanced Aptio Setup Utility	
<p>TPM20 Device Found Firmware Version: Vendor:</p> <p>Security Device Support [Enable] Pending operation [None]</p>	<p>Enables or Disables BIOS support for security device. O.S. will not show Security Device. TCG EFI protocol and INT1A interface will not be available.</p>
	<p>→←: Select Screen ↑↓: Select Item Enter: Select -/+ : Change Opt. F1: General Help F2: Previous Values F3: Optimized Defaults F4: Save & Exit ESC: Exit</p>

RF Device Control Sub-Menu

Advanced		Aptio Setup Utility
RF Device Control		RF Device Control Setting
GSM STATUS	Not Present	→←: Select Screen ↑↓: Select Item Enter: Select -/+ : Change Opt. F1: General Help F2: Previous Values F3: Optimized Defaults F4: Save & Exit ESC: Exit
GPS STATUS	Present	
GPS	[Enabled]	
BT STATUS	Present	
BLUETOOTH	[Enabled]	
WLAN STATUS	Present	
WLAN	[Enabled]	

EC Thermal Control Sub-Menu

Advanced		Aptio Setup Utility
EC Thermal Control		EC Thermal Control Setting
Thermal cooling trip point	[87C]	→←: Select Screen ↑ ↓ : Select Item Enter: Select -/+ : Change Opt. F1: General Help F2: Previous Values F3: Optimized Defaults F4: Save & Exit ESC: Exit

AC In Boot Control Sub-Menu

Advanced		Aptio Setup Utility
<p>AC In Boot</p> <p>AC In Boot Control [Disabled]</p>	<p>AC In Boot Setting</p>	
		<p>→←: Select Screen ↑↓: Select Item Enter: Select -/+ : Change Opt. F1: General Help F2: Previous Values F3: Optimized Defaults F4: Save & Exit ESC: Exit</p>

USB Power Control Sub-Menu

Advanced		Aptio Setup Utility
<p>USB Power Mode</p> <p>USB Power Control [Disabled]</p>	<p>USB Power Mode Setting: For AC Mode only; Setting for S5 Enable/S5 Disable</p>	
		<p>→←: Select Screen ↑↓: Select Item Enter: Select -/+ : Change Opt. F1: General Help F2: Previous Values F3: Optimized Defaults F4: Save & Exit ESC: Exit</p>

Battery Recalibration Sub-Menu

Advanced		Aptio Setup Utility
Battery Recalibration Utility		
Calibration Frequency	N/A	
Battery Capacity	N/A	
Battery Charge Mode	N/A	
Battery Learning Mode	N/A	
<p>Note: Only support single battery recalibration in the same time, while the Utility is executing, please don't close the LCD and don't disconnect the AC adaptor. The battery recalibration will follow the steps and take about 12hrs (by battery capacity) to complete the battery recalibration.</p>		→←: Select Screen ↑↓: Select Item Enter: Select -/+ : Change Opt. F1: General Help F2: Previous Values F3: Optimized Defaults F4: Save & Exit ESC: Exit
Step 1 -> Fully Charged	N/A	
Step 2 -> Learning...	N/A	
Step 3 -> Charge to 40%	N/A	
Step 4 -> Learning...	N/A	
Step 5 -> Charge to 40%	N/A	
Step 6 -> Learning...	N/A	
Step 7 -> Fully Charged	N/A	

IT8786 Super IO Configuration Sub-Menu

Advanced		Aptio Setup Utility
IT8786 Super IO Configuration		Set Parameters of Serial Port 1 (COMA)
Super IO Chip	IT8786	
▶ Serial Port 1 Configuration ▶ Serial Port 2 Configuration ▶ Serial Port 3 Configuration ▶ Serial Port 4 Configuration		→←: Select Screen ↑↓: Select Item Enter: Select -/+ : Change Opt. F1: General Help F2: Previous Values F3: Optimized Defaults F4: Save & Exit ESC: Exit

Intel ® BIOS Guard Technology Sub-Menu

Advanced		Aptio Setup Utility
Intel BIOS Guard Support [Disabled]		Enable/Disable Intel BIOS Guard Support.
		→←: Select Screen ↑↓: Select Item Enter: Select -/+ : Change Opt. F1: General Help F2: Previous Values F3: Optimized Defaults F4: Save & Exit ESC: Exit

Network Stack Configuration Sub-Menu

Advanced		Aptio Setup Utility
Network Stack [Enabled] Ipv4 PXE Support [Disabled] Ipv4 HTTP Support [Disabled] Ipv6 PXE Support [Disabled] Ipv6 HTTP Support [Disabled] IPSEC Certificate [Enabled] PXE boot wait time 0 Media detect count 1		Enable/Disable UEFI Network Stack
		→←: Select Screen ↑↓: Select Item Enter: Select -/+ : Change Opt. F1: General Help F2: Previous Values F3: Optimized Defaults F4: Save & Exit ESC: Exit

CSM Configuration Sub-Menu

Advanced		Aptio Setup Utility
Compatibility Support Module Configuration		Enable/Disable CSM Support.
CSM Support	[Disabled]	→←: Select Screen ↑↓: Select Item Enter: Select -/+ : Change Opt. F1: General Help F2: Previous Values F3: Optimized Defaults F4: Save & Exit ESC: Exit

Intel ® I210 Gigabit Network Connection Sub-Menu

Advanced		Aptio Setup Utility
▶ NIC Configuration		Click to configure the network device port.
Blinks LEDs	0	→←: Select Screen ↑↓: Select Item Enter: Select -/+ : Change Opt. F1: General Help F2: Previous Values F3: Optimized Defaults F4: Save & Exit ESC: Exit
UEFI Driver	Intel ® PRO/1000 6.9.07 PCI-E	
Adapter PBA	000200-000	
Device Name	Intel ® I210 Gigabit Network Connection	
Chip Type	Intel i210	
PCI Device ID	1533	
PCI Address	03:00:00	
Link Status	[Disconnect]	
Mac Address	00:16:3F:61:95:7C	
Virtual MAC Address	00:00:00:00:00:00	

Intel® Ethernet Connection (7) I219-LM Sub-Menu

Aptio Setup Utility	
Advanced	
<p>PORT CONFIGURATION MENU</p> <p>▶ NIC Configuration</p> <p>Blinks LEDs 0</p> <p>PORT CONFIGURATION INFORMATION</p> <p>UEFI Driver: Adapter PBA: Chip Type PCI Device ID PCI Address Link Status Mac Address</p>	<p>Click to configure the network device port.</p> <hr/> <p>→←: Select Screen ↑↓: Select Item Enter: Select -/+ : Change Opt. F1: General Help F2: Previous Values F3: Optimized Defaults F4: Save & Exit ESC: Exit</p>

Chipset Menu

Aptio Setup Utility					
Main	Advanced	Chipset	Security	Boot	Save & Exit
▶ PCH-IO Configuration				PCH Parameters	
				→←: Select Screen ↑↓: Select Item Enter: Select -/+ : Change Opt. F1: General Help F2: Previous Values F3: Optimized Defaults F4: Save & Exit ESC: Exit	

PCH-IO Configuration Sub-Menu

Aptio Setup Utility		
Chipset		
PCH-IO Configuration ▶ SATA And RST Configuration ▶ HD Audio Configuration PCH LAN Controller [Enabled] Wake on LAN Enable [Disabled] SLP_LAN# Low on DC Power [Enabled]		SATA Device Options Settings
		→←: Select Screen ↑↓: Select Item Enter: Select -/+ : Change Opt. F1: General Help F2: Previous Values F3: Optimized Defaults F4: Save & Exit ESC: Exit

Security Menu

Aptio Setup Utility		Boot	Save & Exit
Main	Advanced	Chipset	Security
Password Description If ONLY the Administrator's password is set, then this only limits access to Setup and is only asked for when entering Setup. If ONLY the User's password is set, then this is a power on password and must be entered to boot or enter Setup. In Setup the User will have Administrator rights. The password length must be in the following range; Minimum length 3 Maximum length 20 Administrator Password User Password HDD Security Configuration: P4: P5: ► Secure Boot menu		Secure Configuration	Boot
		→←: Select Screen ↑↓: Select Item Enter: Select -/+ : Change Opt. F1: General Help F2: Previous Values F3: Optimized Defaults F4: Save & Exit ESC: Exit	

HDD Security Configuration Sub-Menu

Aptio Setup Utility	
Security	
HDD Password Description: Allows Access to Set, Modify and Clear Hard Disk User and Master Password. User Password is mandatory to Enable HDD Security. If Master password is installed (optional), it can also be used to unlock the HDD. If the 'Set User Password' option is hidden, do power cycle to enable the option again..	
HDD PASSWORD CONFIGURATION: Security Supported : Yes Security Enabled : No Security Locked : No Security Frozen : No HDD User Pwd Status : NOT INSTALLED HDD Master Pwd Status : NOT INSTALLED Set User Password Set Master Password	
Set HDD User Password. ***Advisable to Power Cycle System after setting Hard Disk Passwords***	
→←: Select Screen ↑↓: Select Item Enter: Select -/+ : Change Opt. F1: General Help F2: Previous Values F3: Optimized Defaults F4: Save & Exit ESC: Exit	

Setting Password

1. Once you set HDD passwords successfully, you must enter user password to boot in the future. The master password provides an alternative entry in case the user password is lost.
2. Clearing the master password in BIOS setup will also clear the current user password. Master password is used as a backup key, it's better not to be changed frequently.
3. You can set your master password and user password with a length between 1 and 32 characters. If you want to clear current password, type nothing when creating a new password.
4. After you set a password, "Pwd Status" will change from "NOT INSTALLED" to "INSTALLED" and the "security enabled" status will change to "YES".
5. Your setting will take effect after reboot.

Note:

- *If the master password is lost or it is not set earlier than the user password, losing the user password would make accessing impossible. So please set the master password at first and keep it carefully.*

Resetting Password

1. After typing an invalid user password three times, a message will show "HDD is locked". Pressing "Enter" will leave the screen message.
2. Press "F2" immediately to enter the BIOS setup where the lost user's password could be cleared with the master password.
3. Once the HDD is locked, users have no right to access. You can only enter again by the correct user password or clear it by the master password.
4. A warm boot will cause HDD Security Frozen in the selection. Only a cold boot can lift the HDD Security frozen and allow further operations in the BIOS setup. (After a cold boot, users can try to enter again with the correct user password or just reset it with the master password)

Security Boot Sub-Menu

Aptio Setup Utility Security		
System Mode	Setup	Secure Boot feature is Active if Secure Boot is Enabled. Platform Key (PK) is enrolled and the system is in User mode. The mode change requires platform reset.
Secure Boot	[Disabled] Not Active	
<ul style="list-style-type: none"> ▶ Secure Boot Mode ▶ Restore Factory Keys ▶ Reset to Setup Mode ▶ Enter Audit Mode ▶ Key Management 	[Custom]	→←: Select Screen ↑↓: Select Item Enter: Select -/+ : Change Opt. F1: General Help F2: Previous Values F3: Optimized Defaults F4: Save & Exit ESC: Exit

Boot Menu

Aptio Setup Utility		
Main	Advanced	Chipset
		Security
		Boot
		Save & Exit
Fixed Boot Order Priorities		Set the system boot order.
Boot Option #1	[UEFI Hard Disk: Windows Boot Manger]	
Boot Option #2	[UEFI CD/DVD]	
Boot Option #3	[UEFI USB Device]	
Boot Option #4	[UEFI Network]	
Boot Option #5	[Hard Disk]	
Boot Option #6	[CD/DVD]	
Boot Option #7	[USB Device]	
Boot Option #8	[Network]	
▶ UEFI Hard Disk Drive BBS Priorites		
		→←: Select Screen ↑↓: Select Item Enter: Select -/+ : Change Opt. F1: General Help F2: Previous Values F3: Optimized Defaults F4: Save & Exit ESC: Exit

The system will try to boot from device on top then the 2nd and so on. If there is more than one device in each category, only the device on top of sub-menu can boot up.

Save & Exit Menu

Aptio Setup Utility	
Main	Advanced
<p>Chipset Security Boot Save & Exit</p>	
<p>Save Options Save Changes and Reset Discard Changes and Reset</p> <p>Default Options Restore Defaults</p> <p>Boot Override Windows Boot Manager (P4: XXXXXXXX) Launch EFI Shell from filesystem device</p>	<p>Reset the system after saving the changes</p> <hr/> <p>→←: Select Screen ↑↓: Select Item Enter: Select -/+ : Change Opt. F1: General Help F2: Previous Values F3: Optimized Defaults F4: Save & Exit ESC: Exit</p>

Chapter Five - Drivers and Applications

The Utility DVD includes all the drivers for the installed devices in your workstation. Please consult the dealer if there is any driver missing. Also, through Device Manager in Windows, you are able to perform “Driver Update” or check if there are still drivers for the devices needed to be installed. Please check the readme file on Utility DVD to get the latest information before installing device drivers.

Note:

- *Please install the chipset driver first.*
- *If the system requests for reboot after installing drivers, please reboot your workstation first before installing other drivers.*

Chapter Six - Specifications

Platform

Intel® Coffee Lake Platform

Processor

Intel® Xeon® E-2176M Processor

Chipset

Intel® CM246 Chipset

Memory

Max. 64GB

- Industrial grade
- DDR4 SO-DIMM x 4, 2400MHz
- ECC/ non ECC

Graphics

- Intel® UHD Graphics P630
- Optional nVIDIA® GeForce® GTX1050 4GB graphic add-on card

Display

- Standard:
 - 17.3" FHD LCD
 - Resolution: 1920 x 1080 pixels
 - Brightness (min. ~ typ.): 800~1000 nits

Storage

- 2.5" SATAIII SSD
- Interface: SATAII
- Height: 7mm
- Industrial grade

Note:

- *The SSD supports hot swap but not for the one with the Operating System.*
- *Standard: 1st SATAIII SSD (Left side)*
Optional:
 - *2nd SATAIII SSD (Left side)*
 - *3rd~4th SATAII SSD (Right side)*

Keyboard

- Number of keys: 83 Keys
- Key Travel: 1.5+/-0.2 mm
- Caps Lock LED (Green)

Touchpad

- Type: PS/2 Resistive Touchpad
- Life time: Over 5,000,000 strokes lifetime

Fan

- Dimensions: about 64(L) x 55(W) x 10(H) mm
- Weight: about 30 grams
- Rotation (impeller side view): CCW
- Bearing type: Fluid bearing
- Rated speed: 4350 RPM \pm 10% AT 5.0 VDC
- MAX. air flow: 5.67 CFM
- MAX. static air pressure: 15.75 mmAq
- Noise level(at 50 cm): 36.8 dBA (MAX.: 38.8 dBA)
- Motor protection: auto restart, motor lock protection

I/O Ports**Left:**

- Audio/Line-in/Microphone x 1
- USB 3.1 Gen. 2 (Type A) x 2

Right:

- 1st GLAN RJ45 x 1
- Optional 2nd GLAN x1
- USB 3.1 Gen. 2 x 2

Rear:

- DC-in Conn. (Military 2 pin)
- Display Port x 1
- VGA x 1
- Serial DB9 x 2 (Default: COM1~2)
- Optional Serial DB9 x 2 (Default: COM3~4)

Bottom:

- D/U Port x 1

Power

AC Adapter:

- AC Input: 100 - 240V
- Frequency: 50/60Hz
- DC Output: 19V/10.5A
- Maximum Power: 200 Watts

DC-in:

- Standard DC-in 19V
- Optional DC-in 12~32V (BVA)

Battery Pack (BRWB3B) :

- Type: Lithium Ion battery
- Capacity: 10.8V 6900mAh
- Dimension: 142 mm (W) x 80.0 mm (D) x 21.0 mm (H)
- Weight: 370g

Note:

- *If you'd like to use DC-in 12V, please make sure the DC-in conn. is more than 12V, and the DC cable should withstand more than 17A.*

Case

- CNC milled Aluminum
- Black/NATO Green

Environmental

- **Temperature:** Standard Operating: -20 °C ~ +60°C (-4 °F ~ +131°F)
Optional Operating: -30 °C ~ +60°C (-22 °F ~ +131°F)
Storage Temperature: -40 °C ~ +70°C (-40 °F ~ +158°F)
- **Humidity:** 5~95% Non-condensing operating
95% maximum storage
- **Altitude:** 0 ~ 4,572 meters (0 ~ 15,000 feet) operating

Certifications

CE, FCC, WEEE, REACH, RoHS2.0, IP65, MIL-STD-810G, Optional MIL-STD-461G, Optional G.A.

Dimensions and Weight

- Dimensions: 436 (L) x 328 (W) x 52 mm (H)
- Weight: 7.04 kg

Note:

- *Weight includes DRAM x 4, WiFi/BT Module, GPS, 2nd GLAN card, batteryx2, SSD x1, BVA, MXM, COM3/4, Smart Card Reader (Battery pack 330g, SSD 61g)*
- *Weight varies depending on system configurations.*

Materials and Recycling

Materials of the workstation are as follows:

- Plastic Case: Recyclable UL grade PC + ABS GE C2800 or C6200
- Aluminum Case: AL6061T6
- Bracket: Aluminum 5052
- Bumper: Silicon Rubber, TPU
- PCB: FR-4, UL 94V0
- Battery: Rechargeable Lithium Ion
- Packing: Carton- Recycled/Recyclable Paper (unbleached)
Cushion- Recyclable EPE
Quick Guide- Recycled/Recyclable Paper

Please recycle the parts according to the local regulations.

Chapter Seven - Optional Devices

Graphics

nVIDIA® GeForce® GTX1050 4GB graphic add-on card

GPU:	NVIDIA GeForce GTX1050
NVIDIA® CUDA™ Cores:	640
Core clock:	1354MHz
Memory Size:	4GB GDDR5
Memory Clock:	7.0 Gbps
Memory Interface Width:	128-bit
Max. Board power:	50W
Form Factor:	MXM graphics module version 3.1, Type A
Dimension:	70 (L) x 82 (H) mm

Communication

- **WiFi/Bluetooth:**
 - Intel Dual Band wireless- AC 9260
 - Board Form Factor: M.2 2230 E-key Card
 - Wi-Fi Certified: 802.11 a/b/g/n/ac
 - Bluetooth: Supports BT 5.0 (Backward compatible)
 - Interface: PCIe (WiFi)/USB (BT)
- **GPS:**
 - Ublox M8N (USB interface)
- **2nd GLAN Card:**
 - Intel I210 GLAN Card
 - 1Gbps
 - Mini PCIe full-size form factor

Memory Card

The memory card will expand your memory to facilitate better system performance. Industrial grade DDR4 SO-DIMM x 4 is available, supporting 8/16GB, ECC/non-ECC DDR4 2400 memory cards. The maximum capacity is 64GB.

Trust Platform Module (TPM2.0)

There is an optional Trust Platform Module (TPM2.0) equipped with this workstation for users to strengthen the security.

With TPM, users are able to encrypt the folders and files directly and make the important file be more secure and be with an additional protection. In other words, your TPM-encrypted files are basically protected with two layers. Even if your TPM-encrypted files are hacked, the files can not to be read without passwords and TPM chipset.

BVA & Surge Protector Module

BVA & Surge Protector Module is designed for all equipment to directly connect with the vehicle power system. Containing the reverse polarity protection and the breaking of high voltage input, the module is able to be against high 100V at 50ms surge.

Note:

- *If you'd like to use DC-in 12V, please make sure the DC-in conn. is more than 12V, and the DC cable should withstand more than 17A.*

Smart Card Reader

Accept a smart card for additional security feature.

Multi Battery Charger (MCRW)

The Multi Battery Charger is designed for the battery of RB14, with this charger, you could charge two battery packs at one time.



Electronic characteristics

- DC Input Range: 12 ~ 32V with BVA
- DC-in Conn:
 - Std. 2 pin Mil Conn. (200W AC Adapter)
 - Optional 3 pin Mil Conn. (90W AC Adapter)
- Charging Time: 4 hours
- CE/FCC Certified

Physical Characteristics

- Dimensions (mm): 129.9(L) x 129.9(W) x 94(H)
- Weight: 325 g

Environmental Ratings

- Operating Temperature: 0 ~ 45°C
- Storage Temperature: -40 ~ 70°C

COM 3/4 Additional Serial Ports

COM 3/ 4 supports RS232, RS422, and RS485 signal. For the types of signals, they are selectable in BIOS menu. Please follow the instructions below to select the signal required:

Select **Advanced => IT8786 Super IO => Serial Port 3 => COM 3 Mode Setting => RS232/ RS422/ RS485**

Chapter Eight - Maintenance and Service

Cleaning

ALWAYS turn OFF the power, unplug the power cord and remove the battery before cleaning.

The exterior of the system and display may be wiped with a clean, soft, and lint-free cloth. If there is difficulty removing dirt, apply non-ammonia, non-alcohol based glass cleaner to the cloth and wipe.

An air gun is recommended for cleaning water and dust. For salty water please clean with fresh water then blow-dry with an air gun. Be sure not to turn the workstation upside down while there is water being applied.

Troubleshooting

Should the workstation fail to function properly, the troubleshooting steps below may be followed.

- Check power adapter and battery.
- Minimize the configuration, i.e. remove extra peripherals and devices.
- Uninstall the software suspected.
- Load Optimized Defaults setting in the BIOS.
- Re-install operating system and application software.

RMA Service

If troubleshooting steps are unsuccessful, consult your dealer for RMA.

Shipping instructions:

1. Remove any personal disks or other media.
2. Use the original shipping container and packing materials, if possible.
3. If the original packing materials are not available, wrap the equipment with soft material (e.g. PU/PE form) then put the wrapped equipment into a hard cardboard shipping box.
4. Include a sheet with the following information: (Note: Please keep a copy of this sheet for your records)
 - Name
 - Address
 - Unit serial number
 - Place and date of purchase or the original invoice number
 - Date of failure
 - A DETAILED Description of the problems you have encountered
 - A list of the hardware/software configuration, if applicable.
5. Clearly mark the outside of the shipping box with the RMA #. If RMA # is not present on the shipping box, receiving will be unable to identify it and it might be returned.
6. Unless prior arrangements have been made, the customer is responsible for all shipping costs. Unauthorized use of the company's shipping accounts is not permitted.