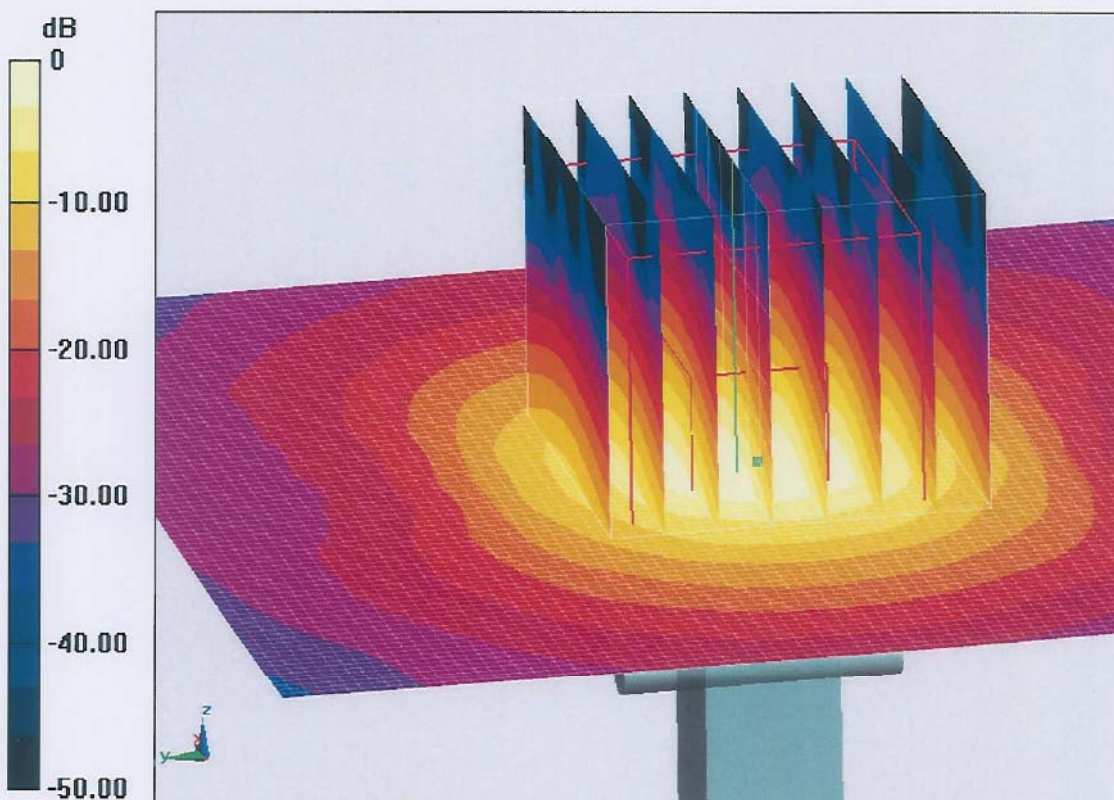


Add: No.52 Huayuanbei Road, Haidian District, Beijing, 100191, China
Tel: +86-10-62304633-2079 Fax: +86-10-62304633-2504
E-mail: Info@emcite.com [Http://www.emcite.com](http://www.emcite.com)

Dipole Calibration for Head Tissue/Pin=100mW, d=10mm, f=5600
MHz/Zoom Scan, dist=1.4mm (8x8x7)/Cube 0: Measurement grid: dx=4mm,
dy=4mm, dz=1.4mm
Reference Value = 71.98 V/m; Power Drift = -0.03 dB
Peak SAR (extrapolated) = 38.0 W/kg
SAR(1 g) = 8.19 W/kg; SAR(10 g) = 2.36 W/kg
Maximum value of SAR (measured) = 20.0 W/kg

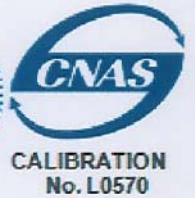
Dipole Calibration for Head Tissue/Pin=100mW, d=10mm, f=5800
MHz/Zoom Scan, dist=1.4mm (8x8x7)/Cube 0: Measurement grid: dx=4mm,
dy=4mm, dz=1.4mm
Reference Value = 69.971 V/m; Power Drift = -0.04 dB
Peak SAR (extrapolated) = 39.3 W/kg
SAR(1 g) = 7.95 W/kg; SAR(10 g) = 2.27 W/kg
Maximum value of SAR (measured) = 19.9 W/kg



0 dB = 19.9 W/kg = 12.99 dBW/kg

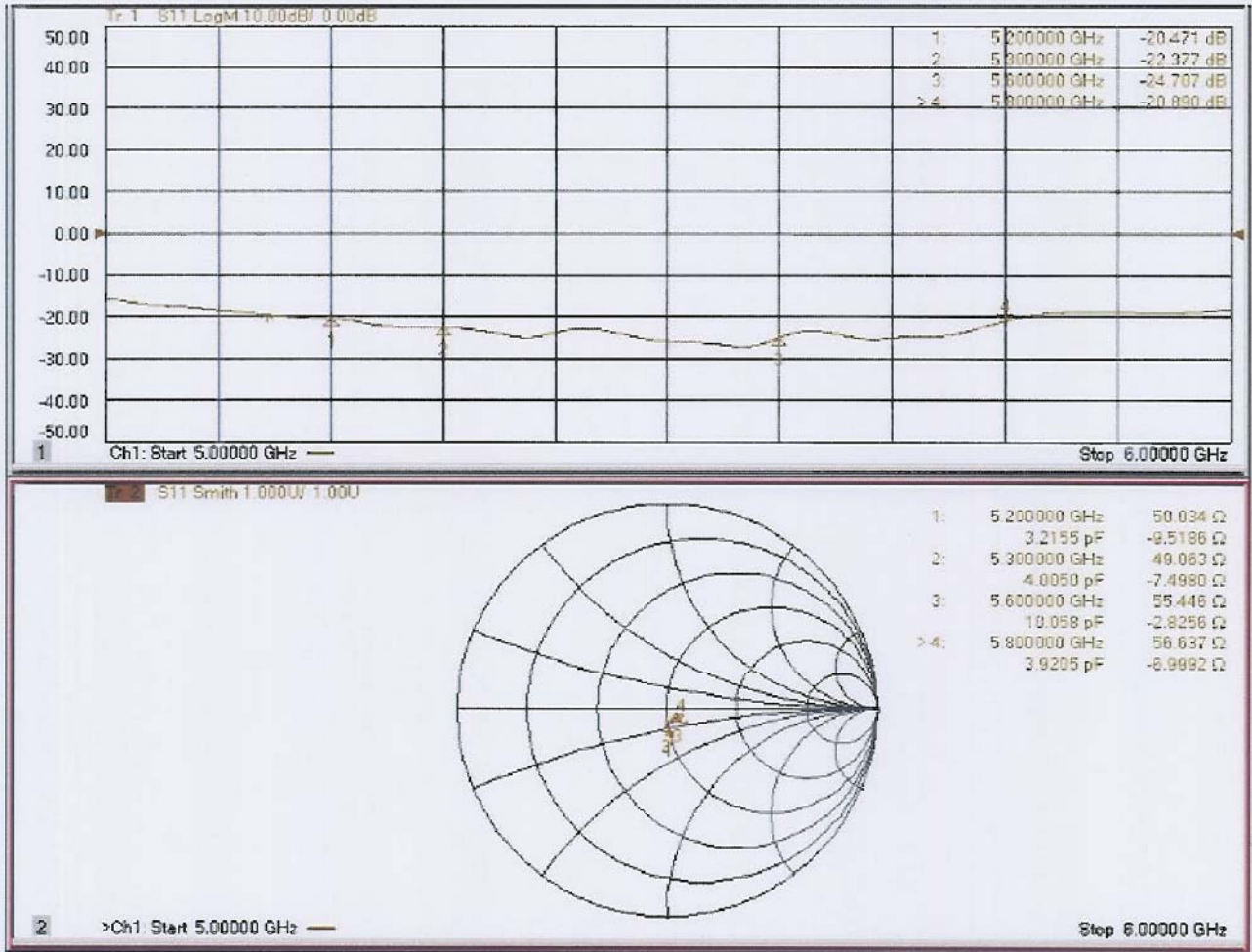


In Collaboration with
s p e a g
 CALIBRATION LABORATORY



Add: No.52 Huayuanbei Road, Haidian District, Beijing, 100191, China
 Tel: +86-10-62304633-2079 Fax: +86-10-62304633-2504
 E-mail: Info@emcite.com [Http://www.emcite.com](http://www.emcite.com)

Impedance Measurement Plot for Head TSL



Appendix D. SAR Test Setup Photos



Top Side



Bottom Side



Left Side



Right Side



Rear Face