

Internal photographs of equipment under test

Open assembly

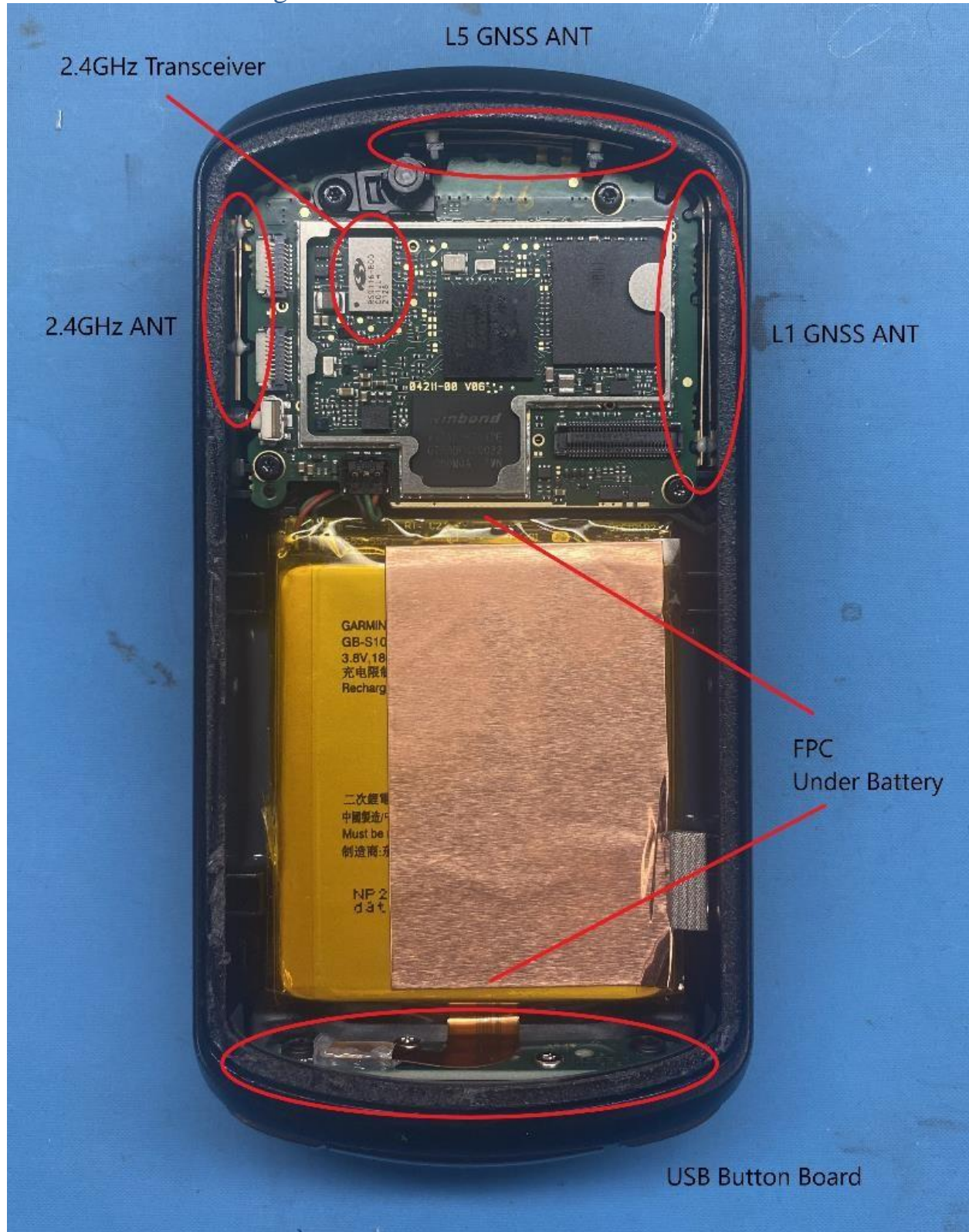


Rogers Labs, Inc.
4405 West 259th Terrace
Louisburg, KS 66053
Phone/Fax: (913) 837-3214
Revision 1

Garmin International, Inc.
HVIN: AA4211
Test: 211116
Test to: CFR47 15C, RSS-210, RSS-247
File: AA4211 Short Term Conf IntPho

SN's: 3390944832, 3390944978
FCC ID: IPH-A4211
IC: 1792A-A4211
Date: March 17, 2022
Page 1 of 10

Main PCB with labeling and Antenna Locations



Rogers Labs, Inc.
4405 West 259th Terrace
Louisburg, KS 66053
Phone/Fax: (913) 837-3214
Revision 1

Garmin International, Inc.
HVIN: AA4211
Test: 211116
Test to: CFR47 15C, RSS-210, RSS-247
File: AA4211 Short Term Conf IntPho

SN's: 3390944832, 3390944978
FCC ID: IPH-A4211
IC: 1792A-A4211
Date: March 17, 2022
Page 2 of 10

Main PCB Front



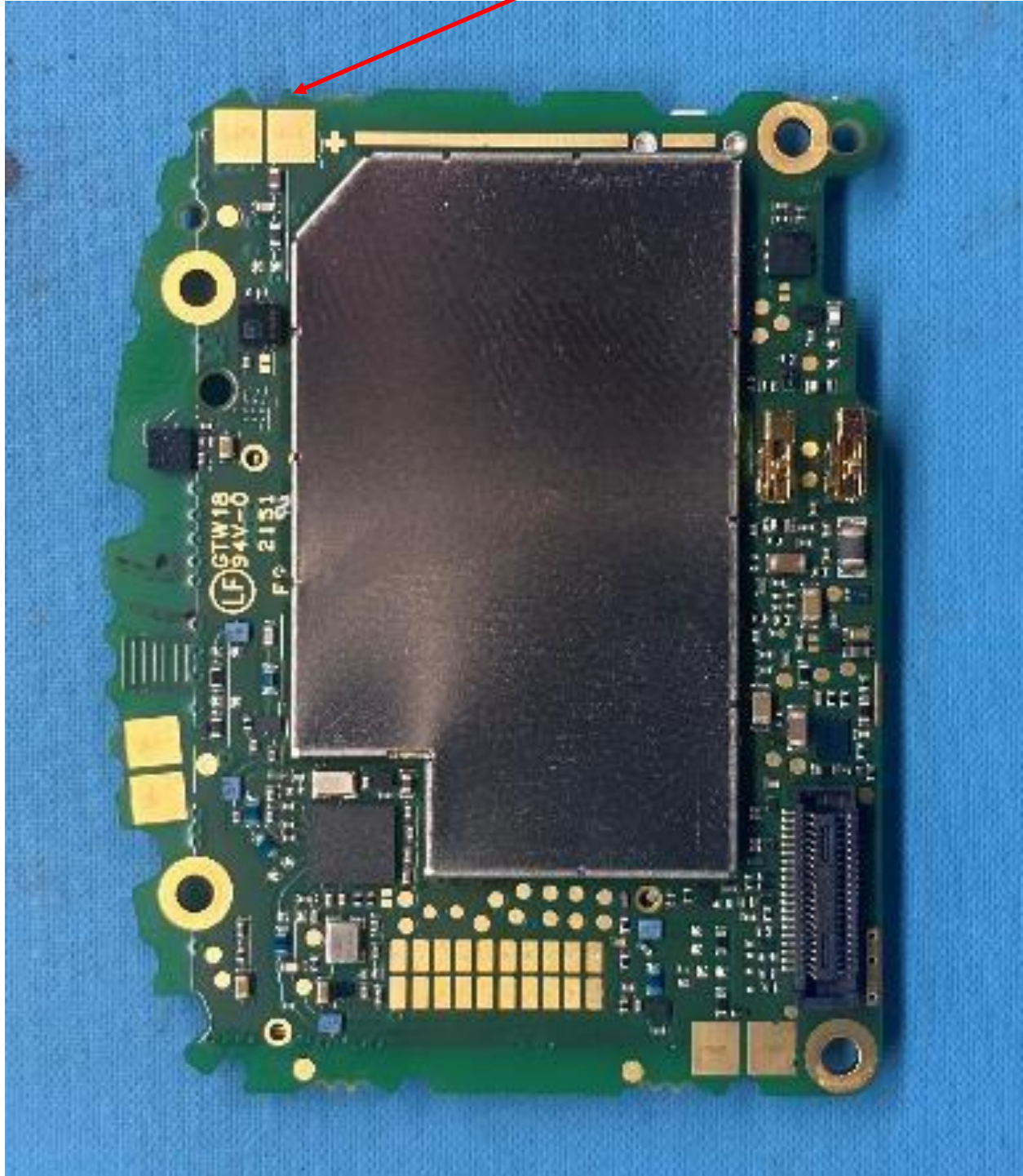
Rogers Labs, Inc.
4405 West 259th Terrace
Louisburg, KS 66053
Phone/Fax: (913) 837-3214
Revision 1

Garmin International, Inc.
HVIN: AA4211
Test: 211116
Test to: CFR47 15C, RSS-210, RSS-247
File: AA4211 Short Term Conf IntPho

SN's: 3390944832, 3390944978
FCC ID: IPH-A4211
IC: 1792A-A4211
Date: March 17, 2022
Page 3 of 10

Main PCB back with Shielding

Antenna Connection pads



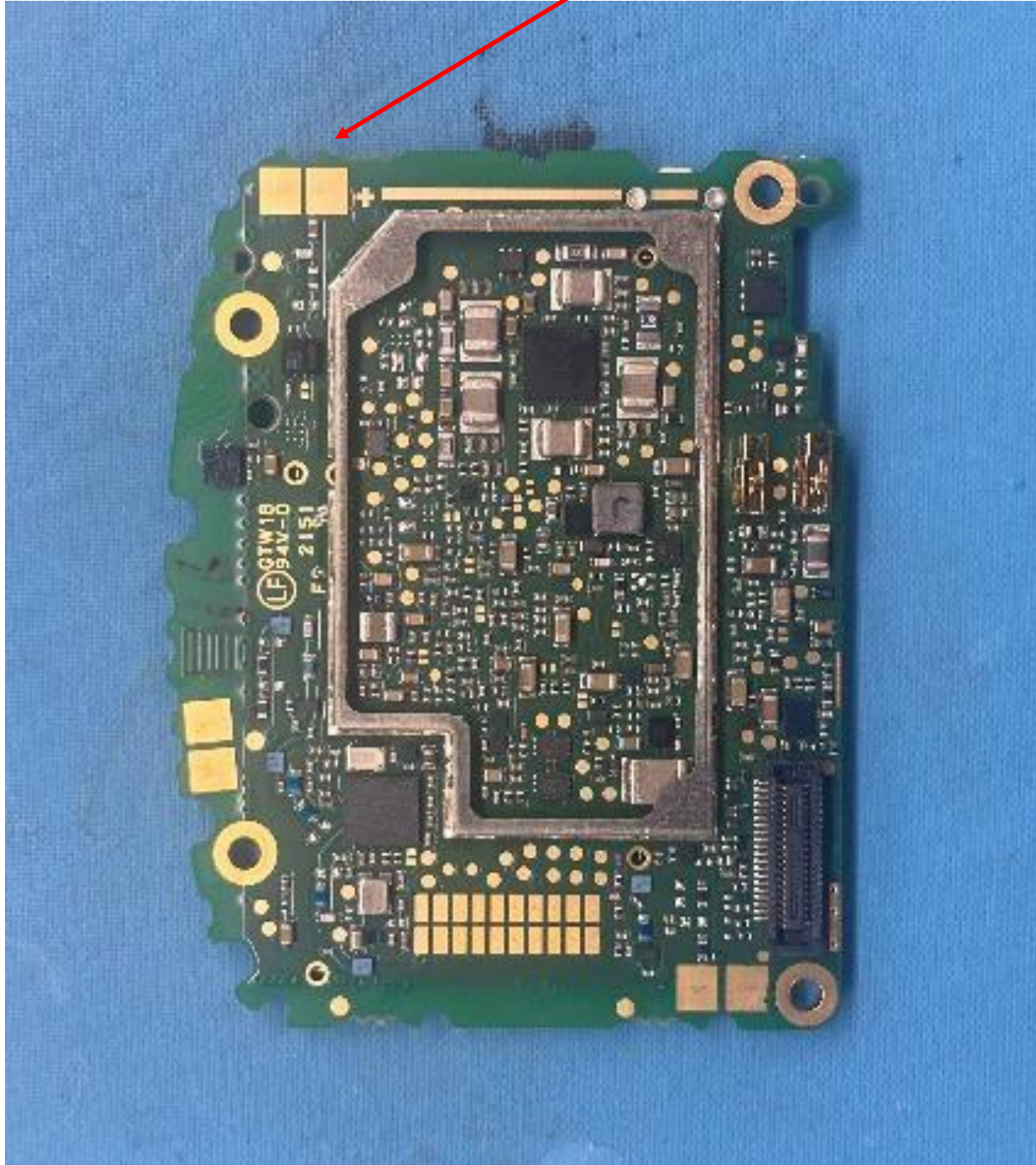
Rogers Labs, Inc.
4405 West 259th Terrace
Louisburg, KS 66053
Phone/Fax: (913) 837-3214
Revision 1

Garmin International, Inc.
HVIN: AA4211
Test: 211116
Test to: CFR47 15C, RSS-210, RSS-247
File: AA4211 Short Term Conf IntPho

SN's: 3390944832, 3390944978
FCC ID: IPH-A4211
IC: 1792A-A4211
Date: March 17, 2022
Page 4 of 10

Main PCB Back Shielding removed

Antenna Connection pads

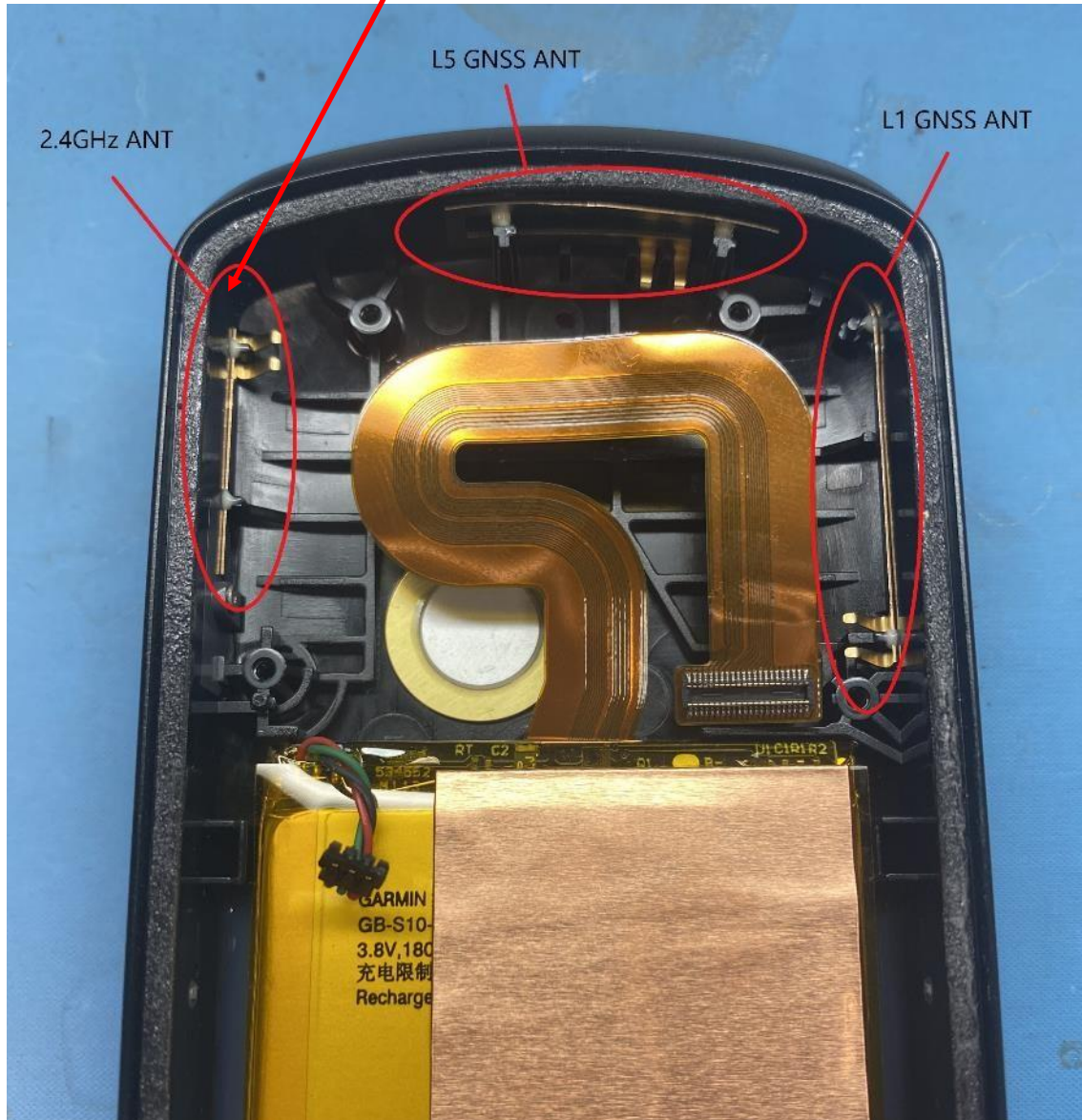


Rogers Labs, Inc.
4405 West 259th Terrace
Louisburg, KS 66053
Phone/Fax: (913) 837-3214
Revision 1

Garmin International, Inc.
HVIN: AA4211
Test: 211116
Test to: CFR47 15C, RSS-210, RSS-247
File: AA4211 Short Term Conf IntPho

SN's: 3390944832, 3390944978
FCC ID: IPH-A4211
IC: 1792A-A4211
Date: March 17, 2022
Page 5 of 10

Antenna Metal Stake IFA

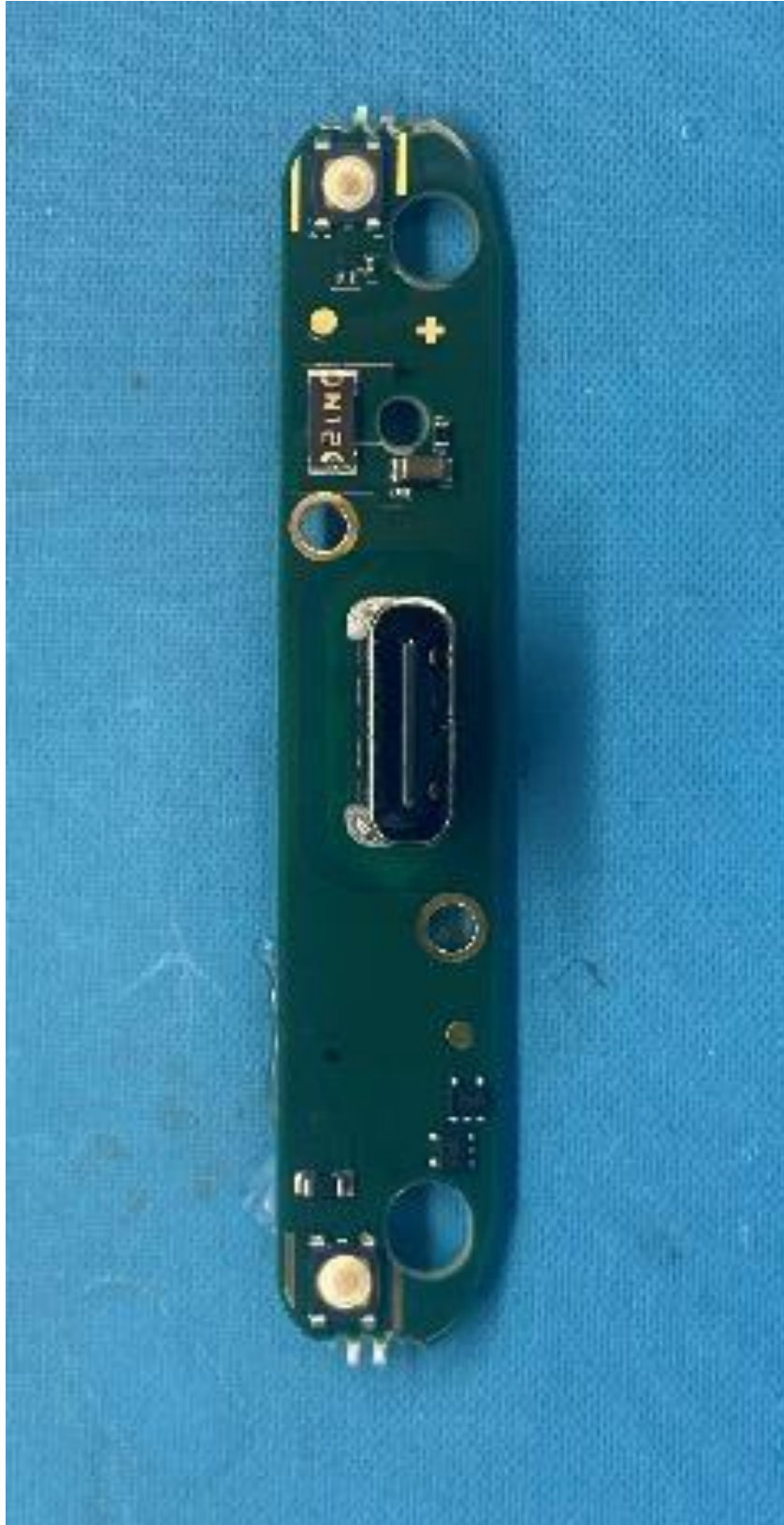


Rogers Labs, Inc.
4405 West 259th Terrace
Louisburg, KS 66053
Phone/Fax: (913) 837-3214
Revision 1

Garmin International, Inc.
HVIN: AA4211
Test: 211116
Test to: CFR47 15C, RSS-210, RSS-247
File: AA4211 Short Term Conf IntPho

SN's: 3390944832, 3390944978
FCC ID: IPH-A4211
IC: 1792A-A4211
Date: March 17, 2022
Page 6 of 10

USB PCB Front



Rogers Labs, Inc.
4405 West 259th Terrace
Louisburg, KS 66053
Phone/Fax: (913) 837-3214
Revision 1

Garmin International, Inc.
HVIN: AA4211
Test: 211116
Test to: CFR47 15C, RSS-210, RSS-247
File: AA4211 Short Term Conf IntPho

SN's: 3390944832, 3390944978
FCC ID: IPH-A4211
IC: 1792A-A4211
Date: March 17, 2022
Page 7 of 10

USB PCB Back

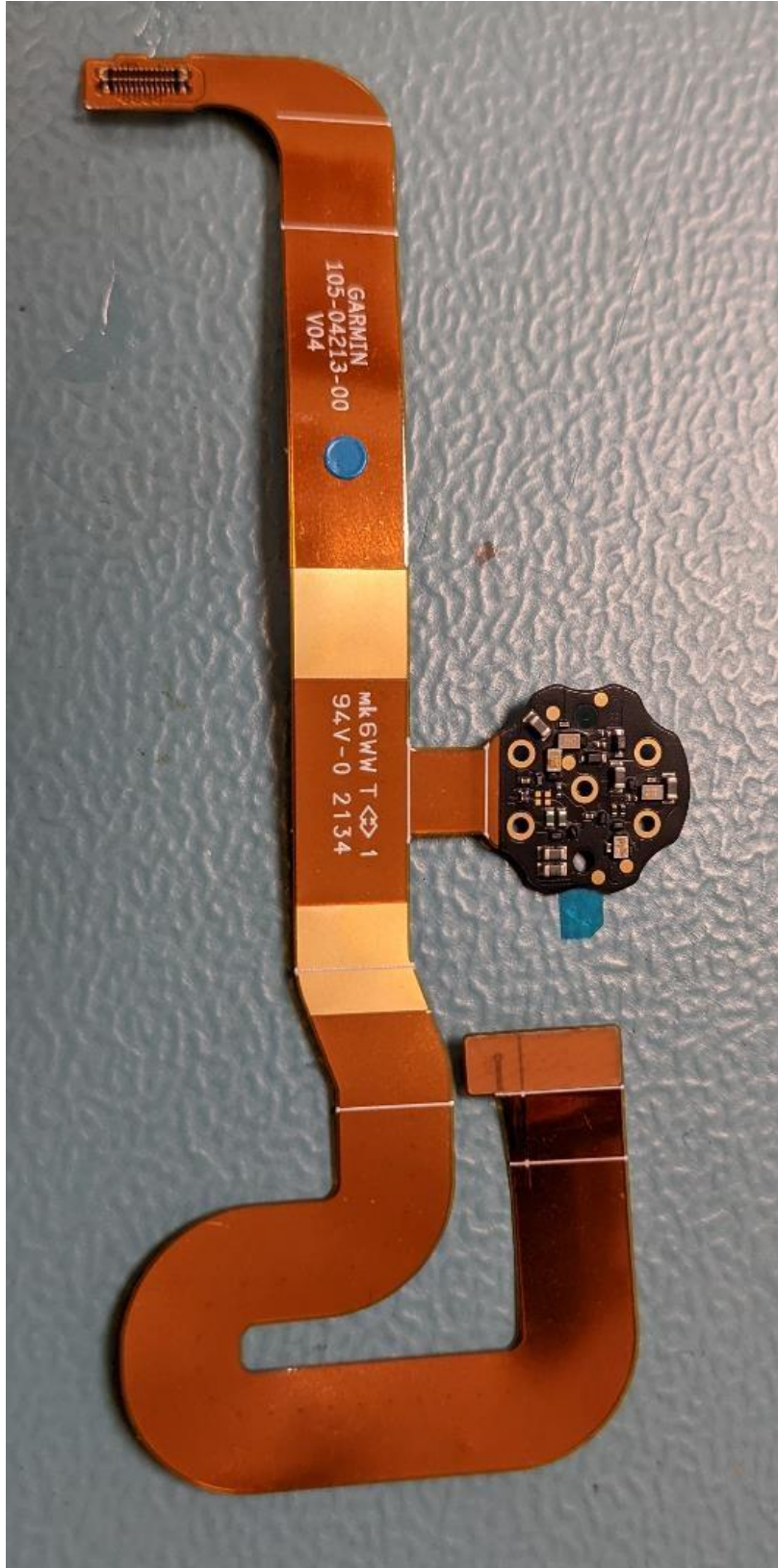


Rogers Labs, Inc.
4405 West 259th Terrace
Louisburg, KS 66053
Phone/Fax: (913) 837-3214
Revision 1

Garmin International, Inc.
HVIN: AA4211
Test: 211116
Test to: CFR47 15C, RSS-210, RSS-247
File: AA4211 Short Term Conf IntPho

SN's: 3390944832, 3390944978
FCC ID: IPH-A4211
IC: 1792A-A4211
Date: March 17, 2022
Page 8 of 10

FPC Top



Rogers Labs, Inc.
4405 West 259th Terrace
Louisburg, KS 66053
Phone/Fax: (913) 837-3214
Revision 1

Garmin International, Inc.
HVIN: AA4211
Test: 211116
Test to: CFR47 15C, RSS-210, RSS-247
File: AA4211 Short Term Conf IntPho

SN's: 3390944832, 3390944978
FCC ID: IPH-A4211
IC: 1792A-A4211
Date: March 17, 2022
Page 9 of 10

FPC Bottom



Rogers Labs, Inc.
4405 West 259th Terrace
Louisburg, KS 66053
Phone/Fax: (913) 837-3214
Revision 1

Garmin International, Inc.
HVIN: AA4211
Test: 211116
Test to: CFR47 15C, RSS-210, RSS-247
File: AA4211 Short Term Conf IntPho

SN's: 3390944832, 3390944978
FCC ID: IPH-A4211
IC: 1792A-A4211
Date: March 17, 2022
Page 10 of 10