

Top Side without Shield

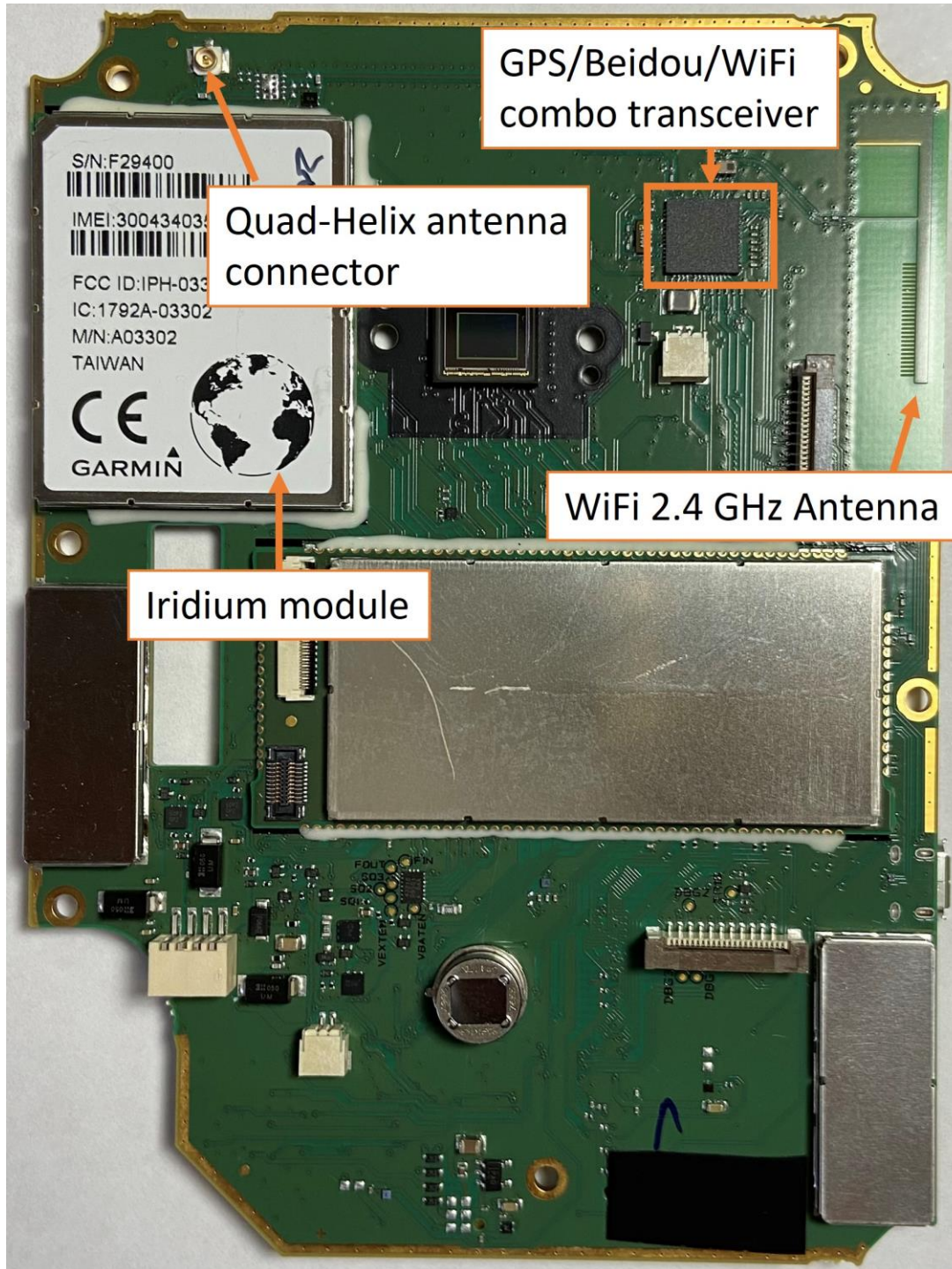


Rogers Labs, Inc.
4405 West 259th Terrace
Louisburg, KS 66053
Phone/Fax: (913) 837-3214
Revision 1

Garmin International, Inc.
Model: AA3851
Test: 210505a
Test to: CFR47 15C, RSS-210
File: AA3851 Short Term Conf IntPho

SN's: 3367328349 / 3367328315
FCC ID: IPH-A3851
IC: 1792A-A3851
Date: March 22, 2022
Page 1 of 6

Top Side with Shield

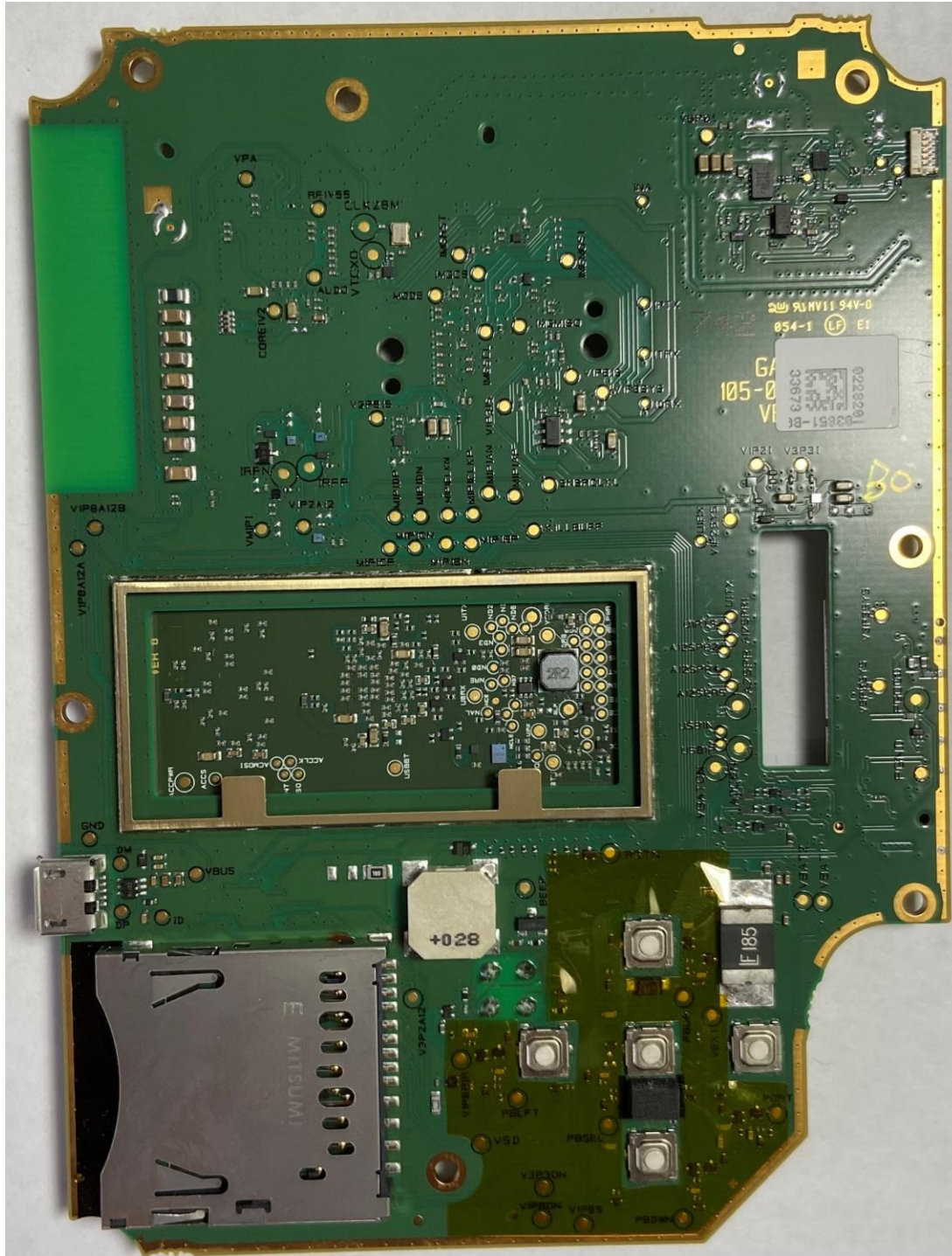


Rogers Labs, Inc.
4405 West 259th Terrace
Louisburg, KS 66053
Phone/Fax: (913) 837-3214
Revision 1

Garmin International, Inc.
Model: AA3851
Test: 210505a
Test to: CFR47 15C, RSS-210
File: AA3851 Short Term Conf IntPho

SN's: 3367328349 / 3367328315
FCC ID: IPH-A3851
IC: 1792A-A3851
Date: March 22, 2022
Page 2 of 6

Bottom side without shield

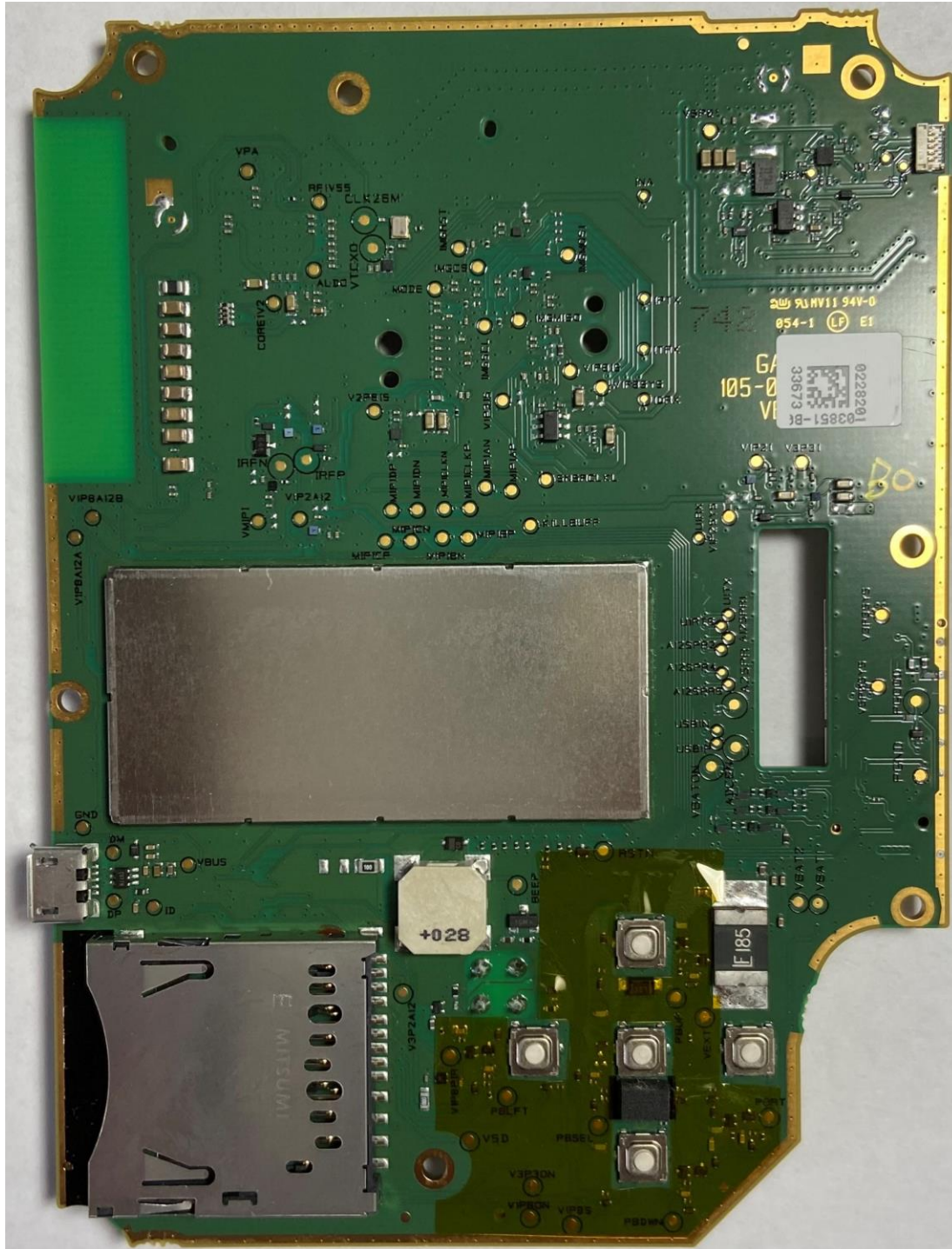


Rogers Labs, Inc.
4405 West 259th Terrace
Louisburg, KS 66053
Phone/Fax: (913) 837-3214
Revision 1

Garmin International, Inc.
Model: AA3851
Test: 210505a
Test to: CFR47 15C, RSS-210
File: AA3851 Short Term Conf IntPho

SN's: 3367328349 / 3367328315
FCC ID: IPH-A3851
IC: 1792A-A3851
Date: March 22, 2022
Page 3 of 6

Bottom with shield

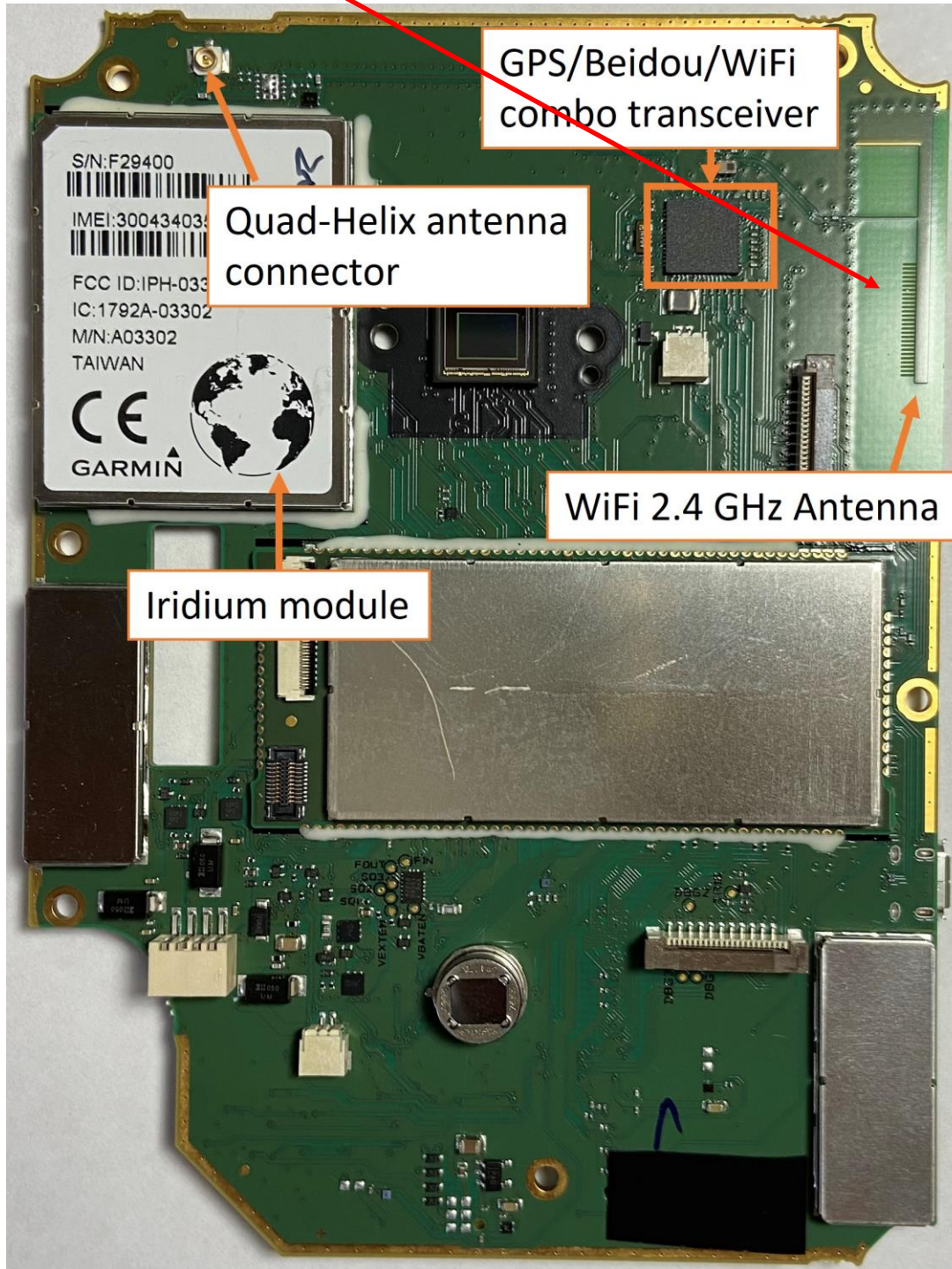


Rogers Labs, Inc.
4405 West 259th Terrace
Louisburg, KS 66053
Phone/Fax: (913) 837-3214
Revision 1

Garmin International, Inc.
Model: AA3851
Test: 210505a
Test to: CFR47 15C, RSS-210
File: AA3851 Short Term Conf IntPho

SN's: 3367328349 / 3367328315
FCC ID: IPH-A3851
IC: 1792A-A3851
Date: March 22, 2022
Page 4 of 6

Antenna (2.4 GHz PIFA)

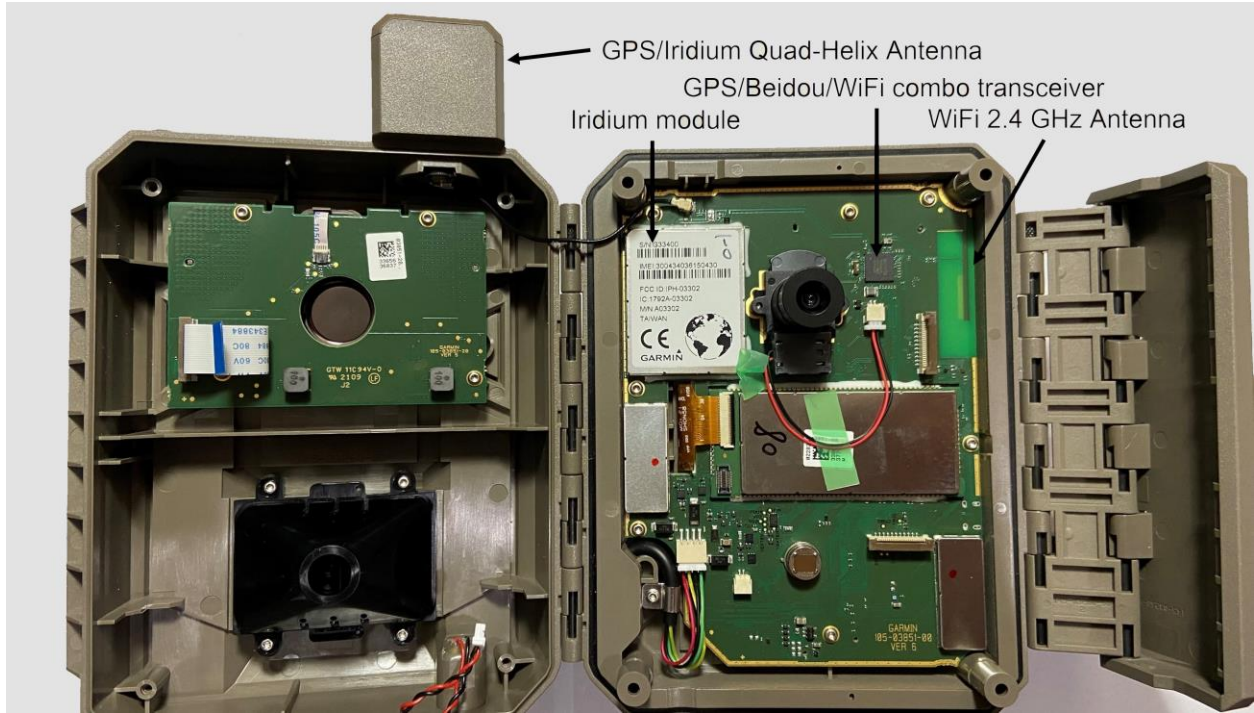


Rogers Labs, Inc.
4405 West 259th Terrace
Louisburg, KS 66053
Phone/Fax: (913) 837-3214
Revision 1

Garmin International, Inc.
Model: AA3851
Test: 210505a
Test to: CFR47 15C, RSS-210
File: AA3851 Short Term Conf IntPho

SN's: 3367328349 / 3367328315
FCC ID: IPH-A3851
IC: 1792A-A3851
Date: March 22, 2022
Page 5 of 6

Inside enclosure



Rogers Labs, Inc.
4405 West 259th Terrace
Louisburg, KS 66053
Phone/Fax: (913) 837-3214
Revision 1

Garmin International, Inc.
Model: AA3851
Test: 210505a
Test to: CFR47 15C, RSS-210
File: AA3851 Short Term Conf IntPho

SN's: 3367328349 / 3367328315
FCC ID: IPH-A3851
IC: 1792A-A3851
Date: March 22, 2022
Page 6 of 6