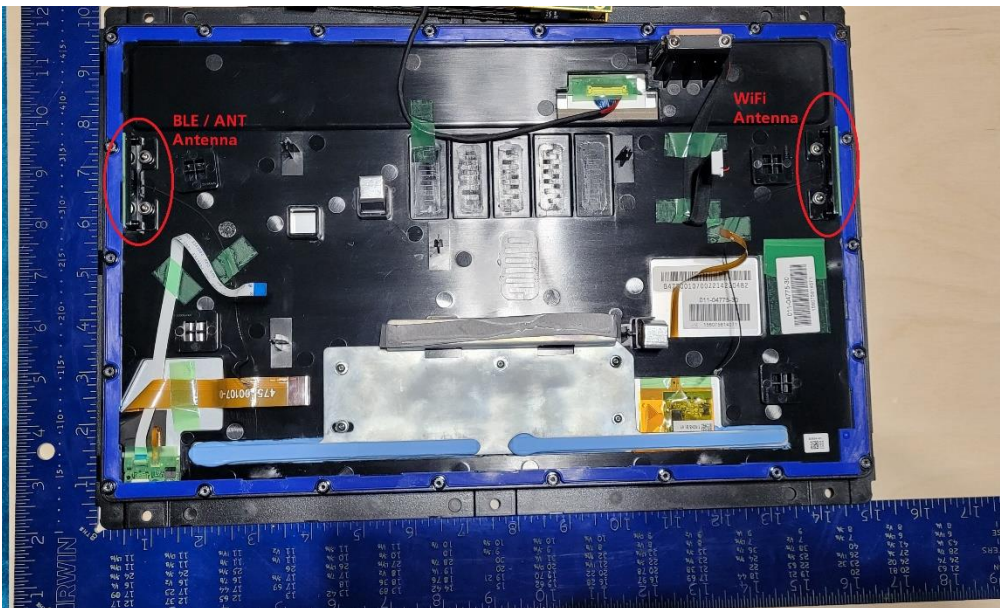


Garmin AA3562 Internal Photos GPSMAP 8x16xsv

FRONT



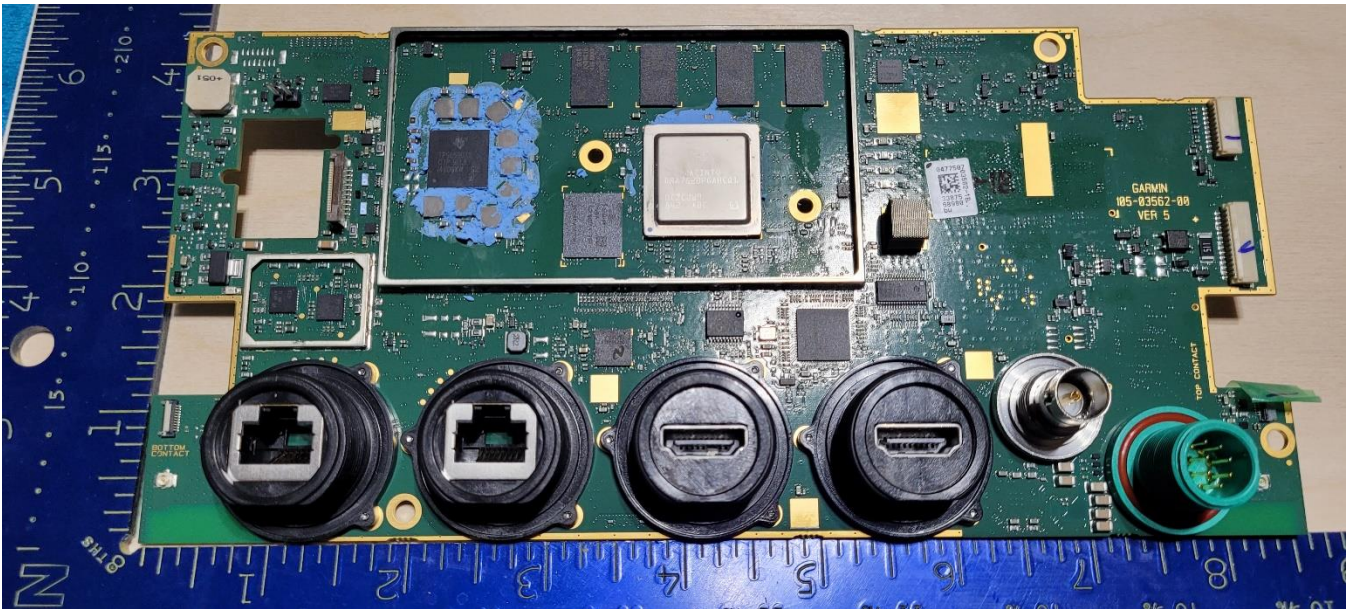
REAR

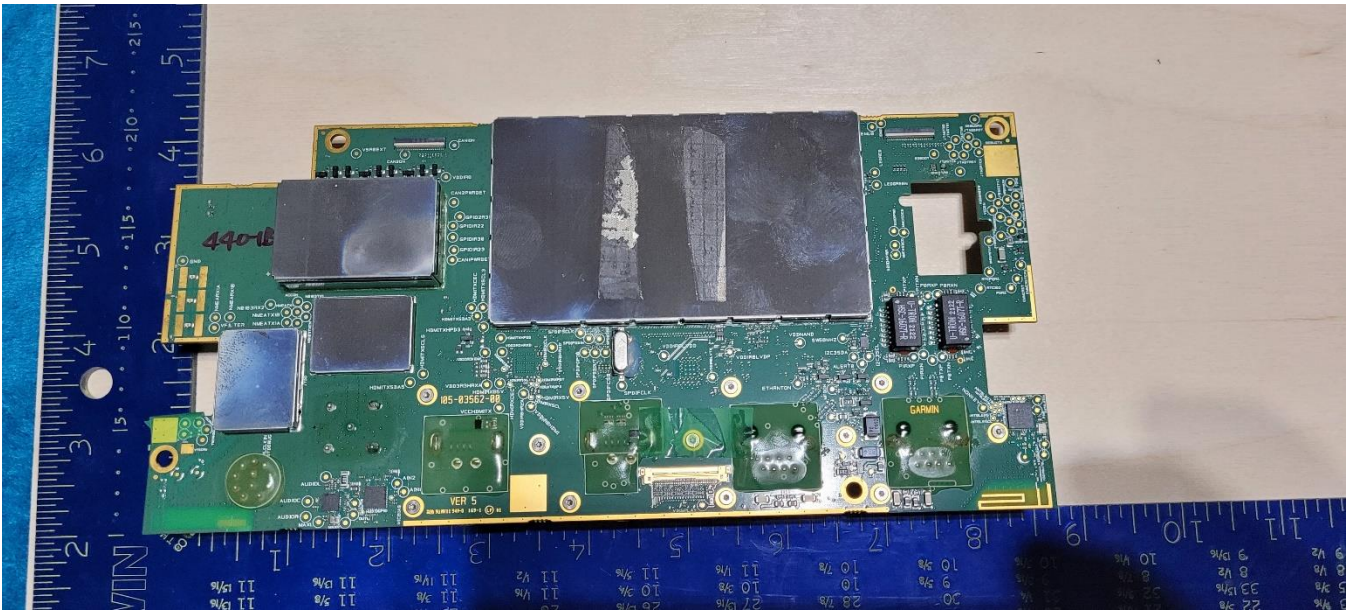


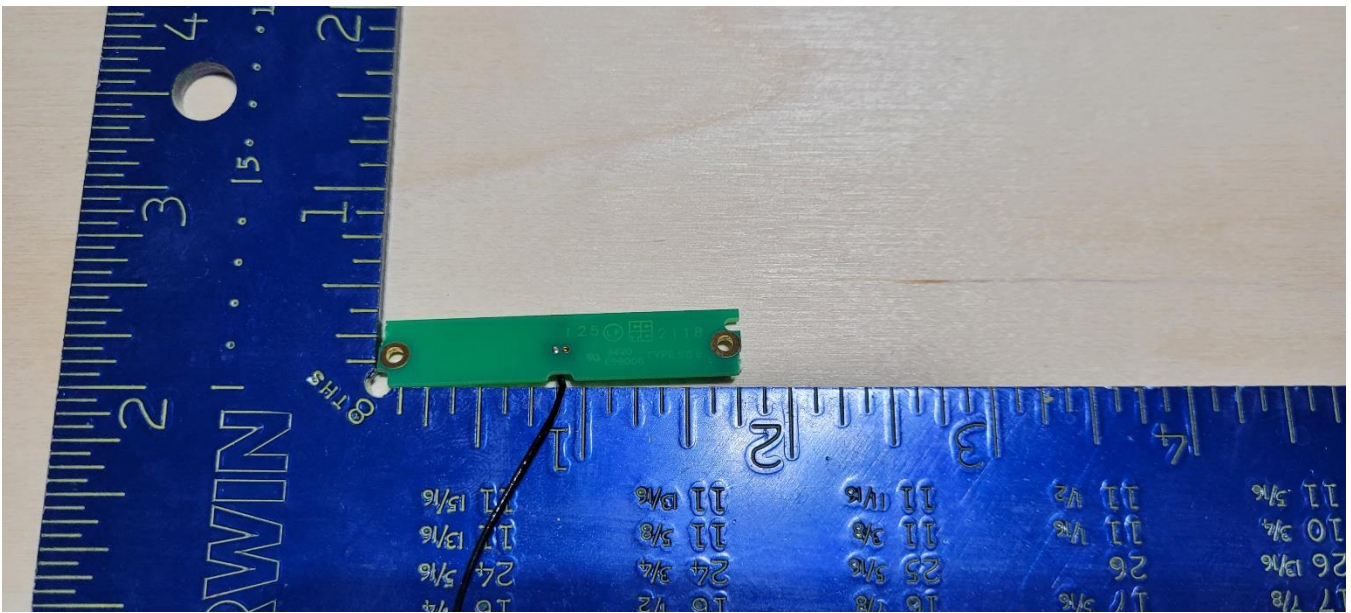
PCBAs



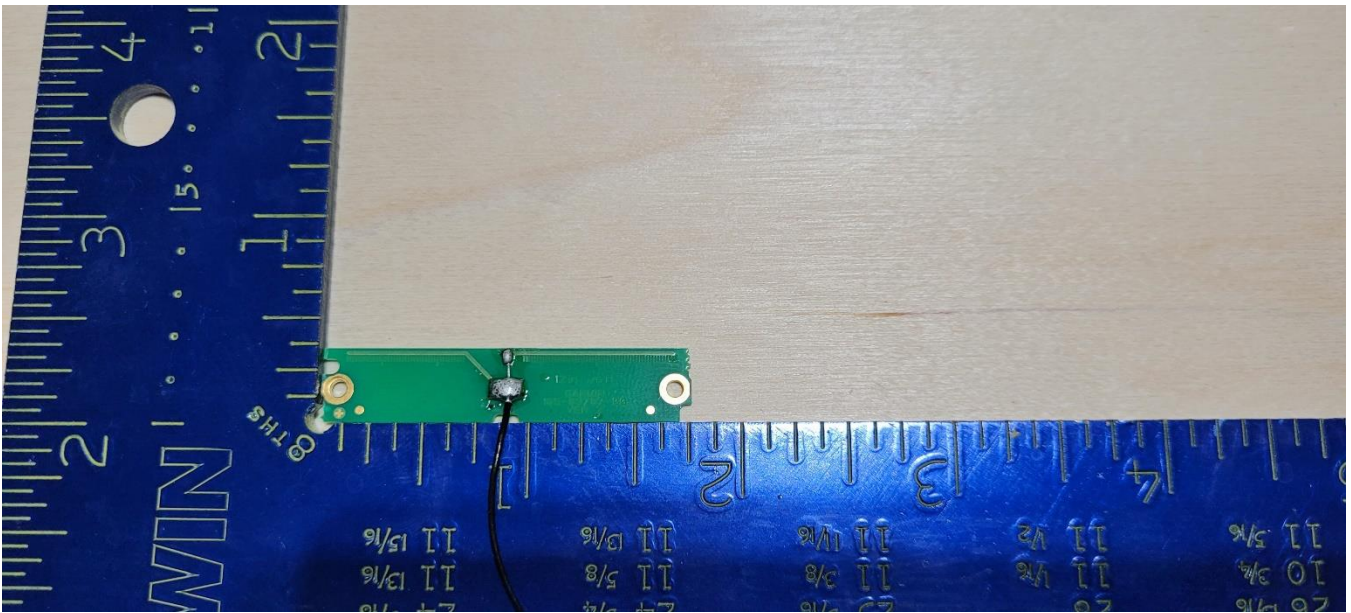
Main PCBA – contains RF transceivers





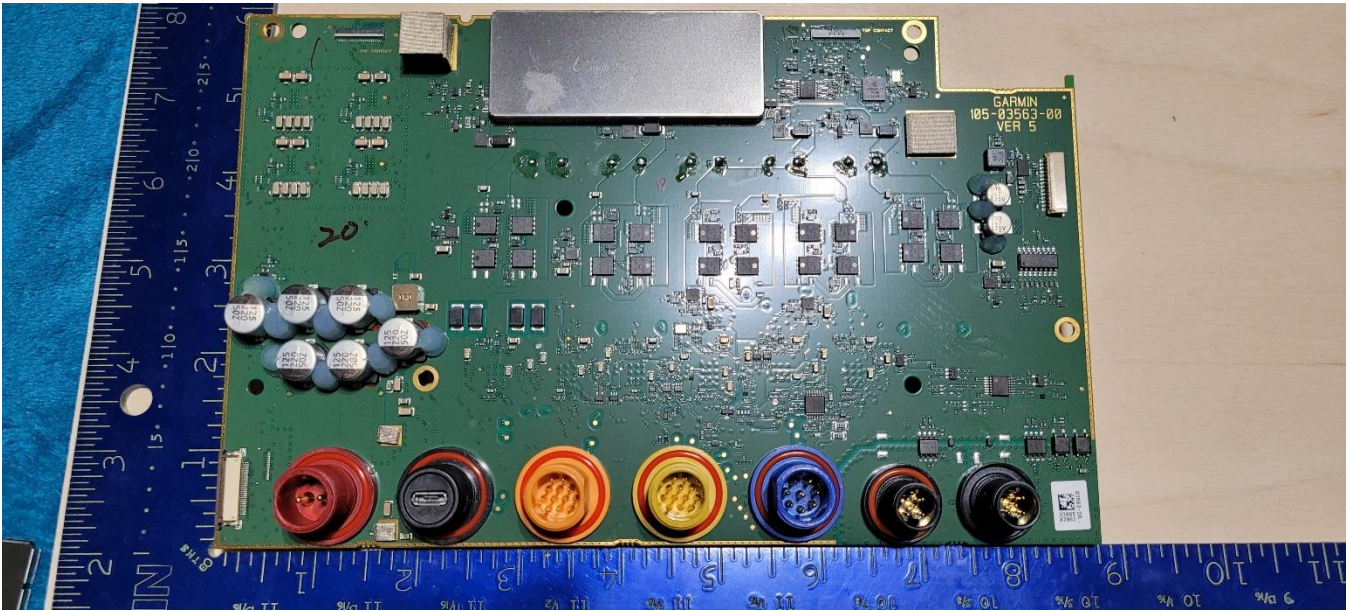
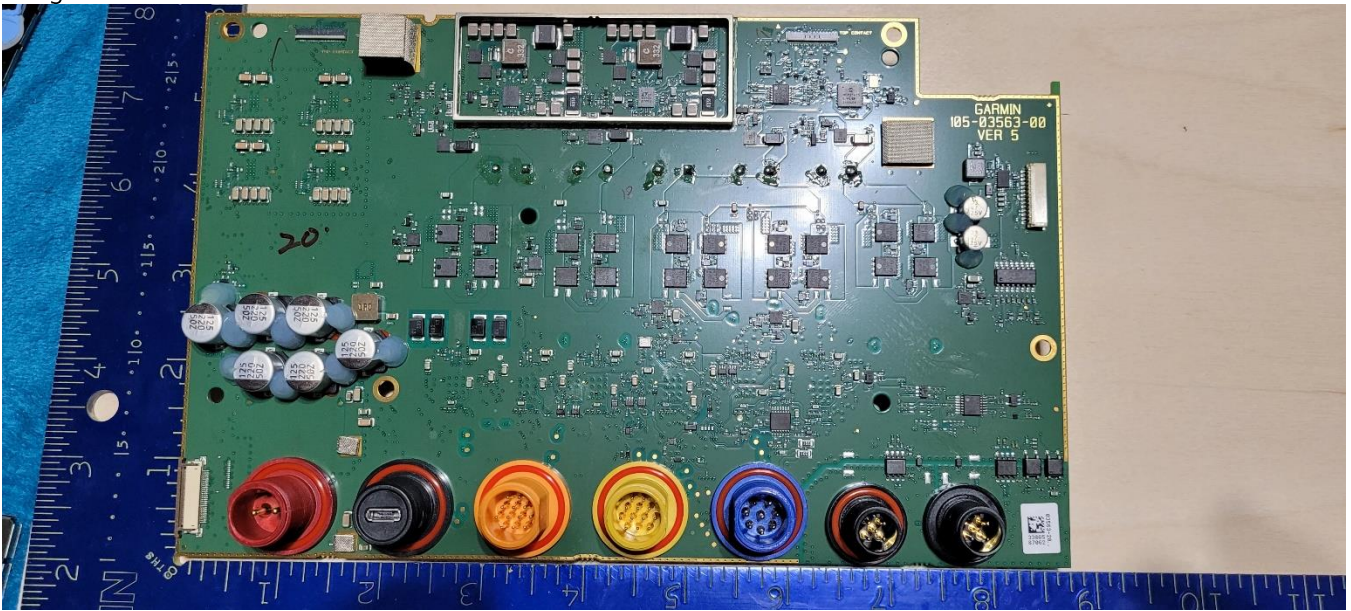


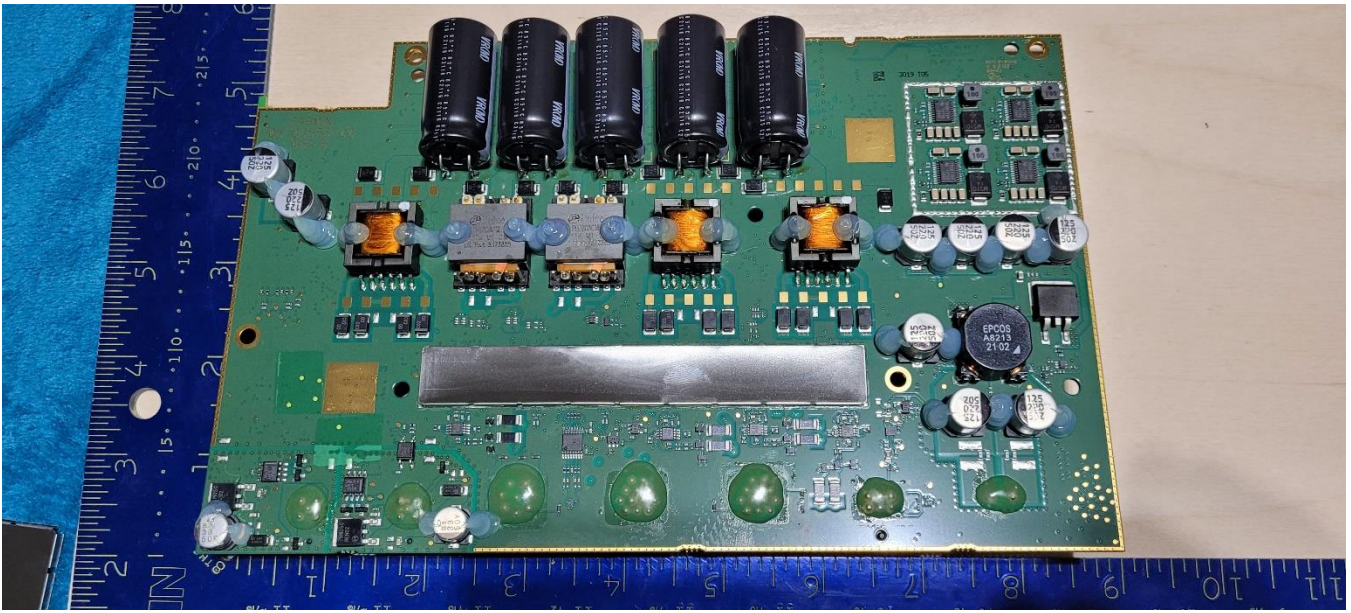
BLE / ANT antenna and WiFi antenna— Back



BLE / ANT antenna and WiFi antenna - Front

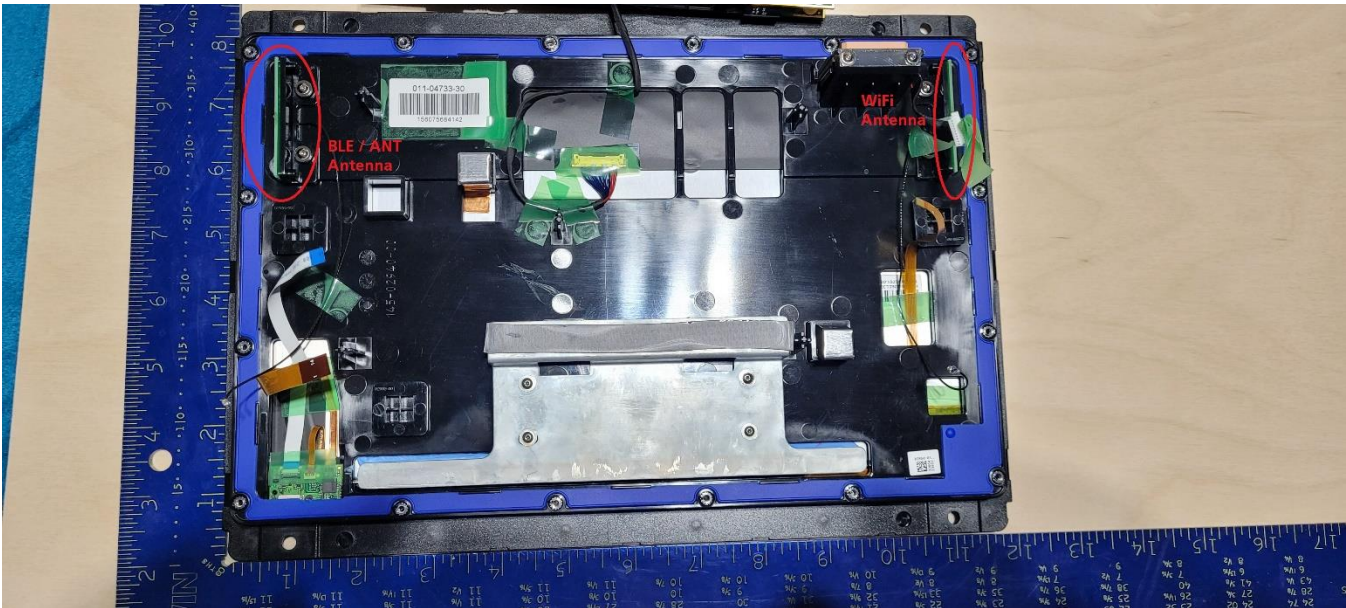
Daughter PCBA



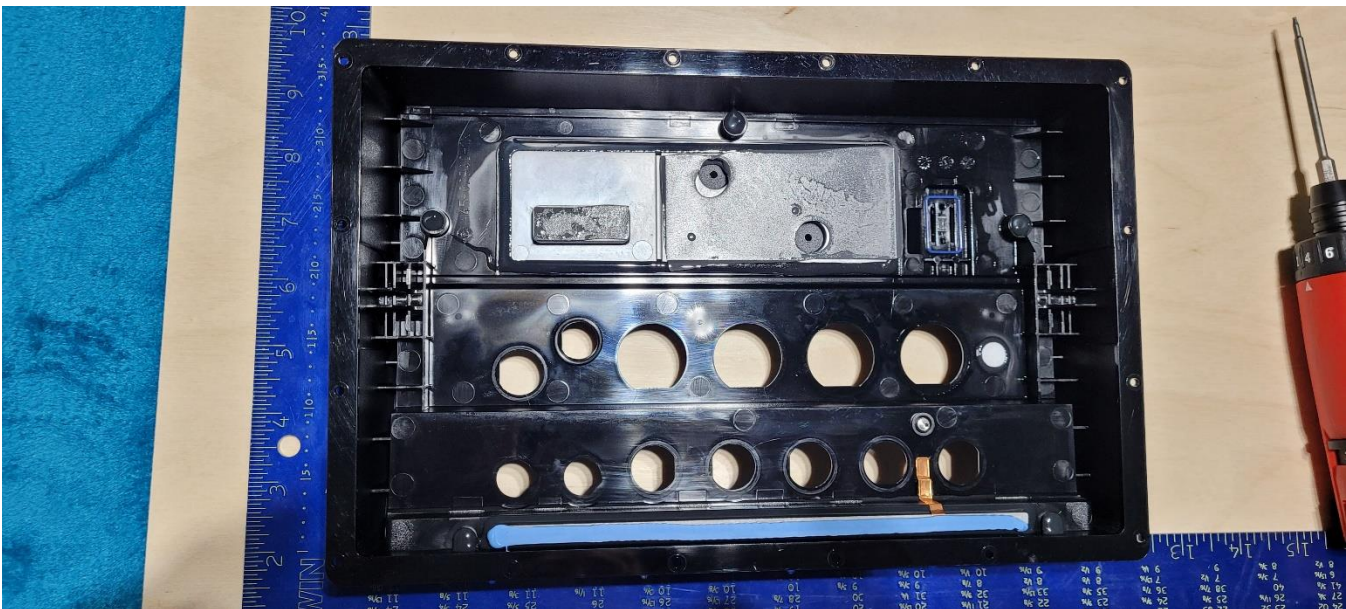


Garmin AA3562 Internal Photos GPSMAP 8x12xsv

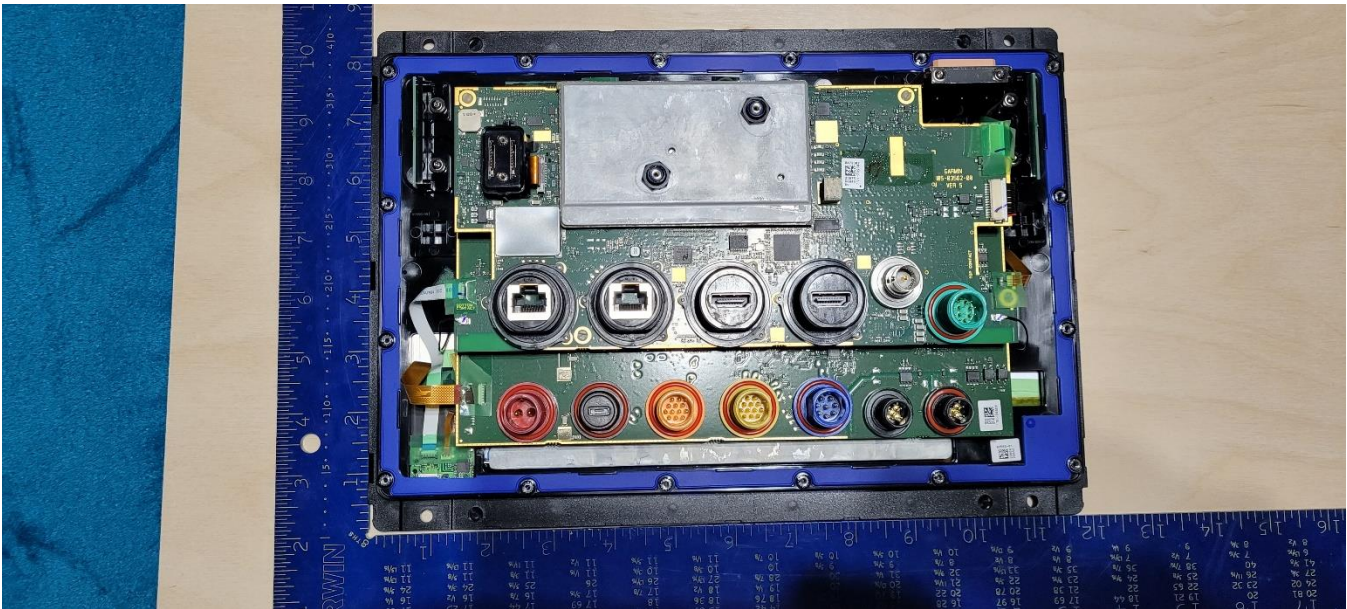
FRONT



REAR

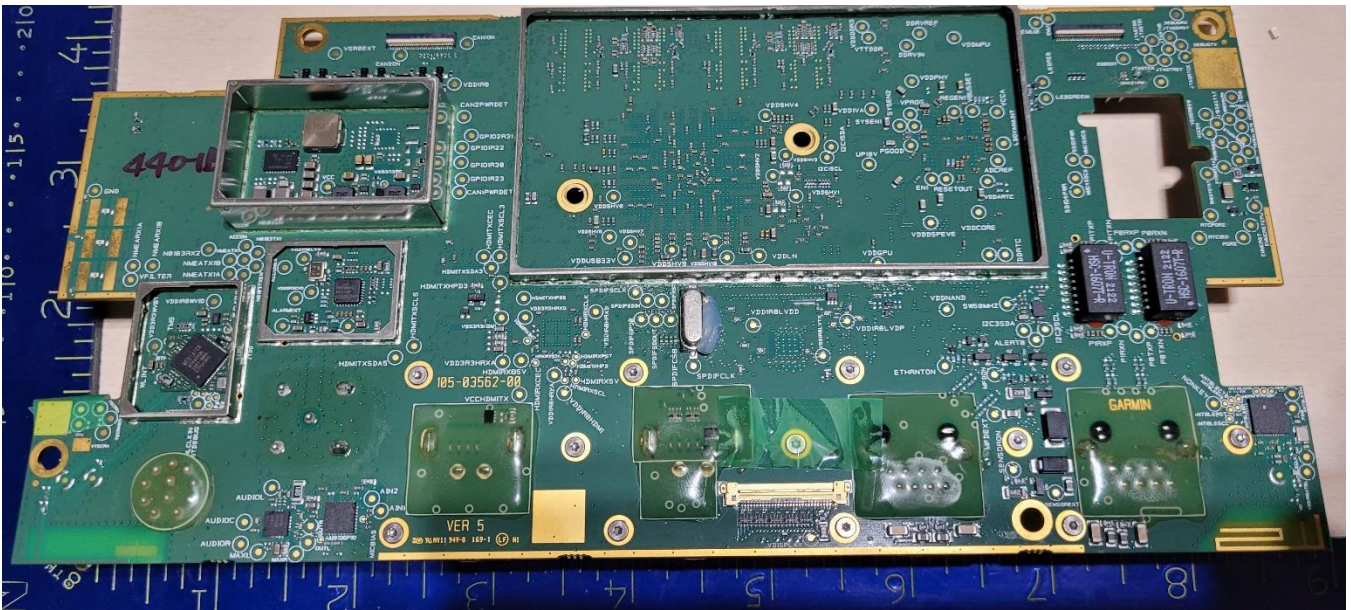
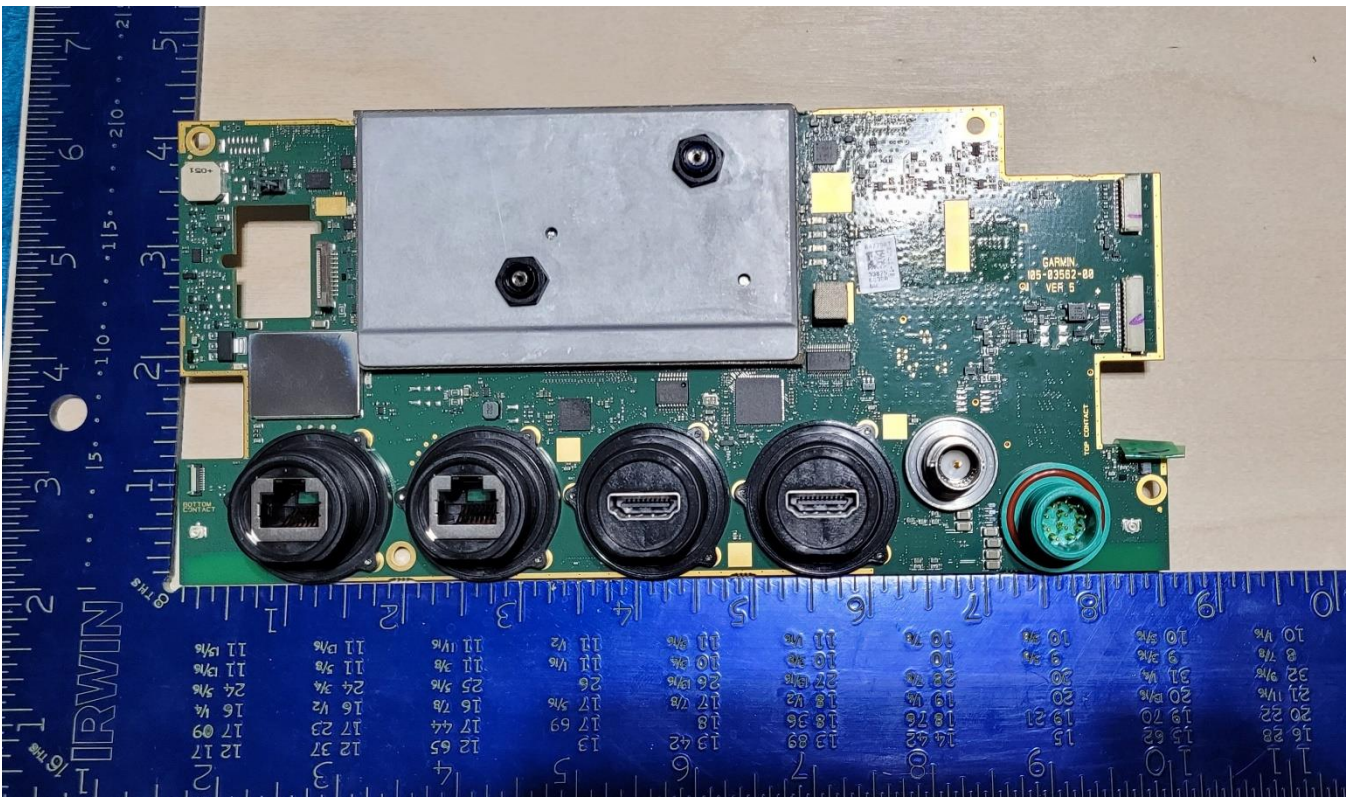


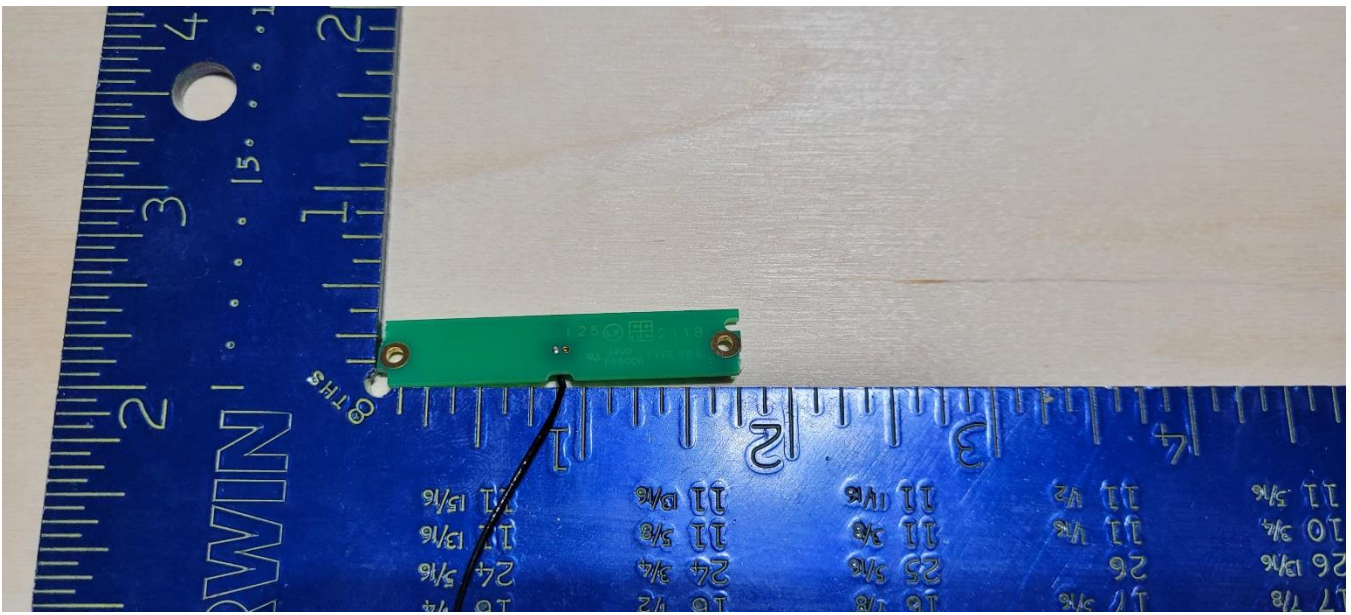
PCBAs



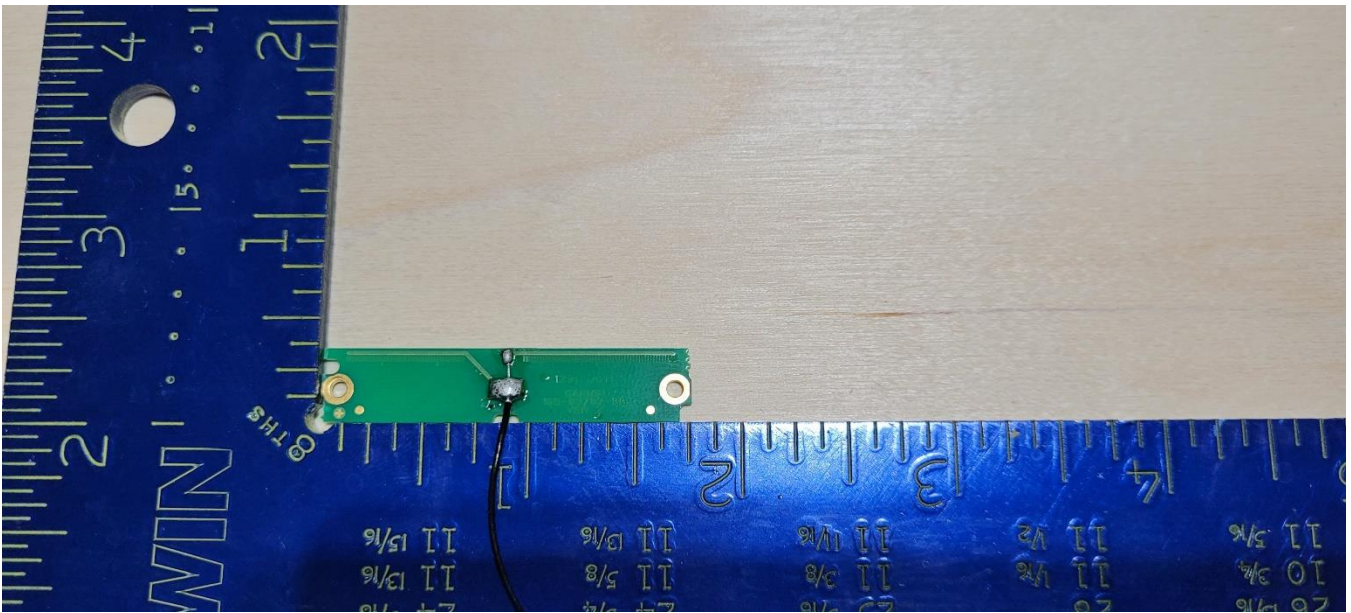
Main PCBA – contains RF transceivers





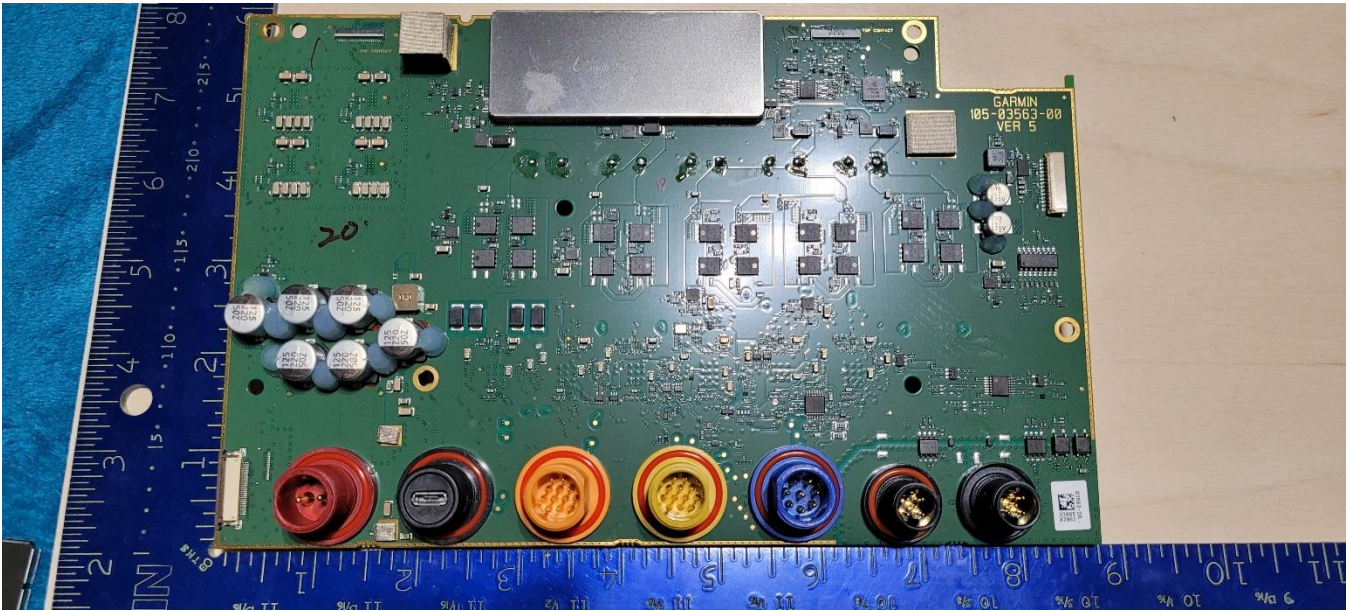
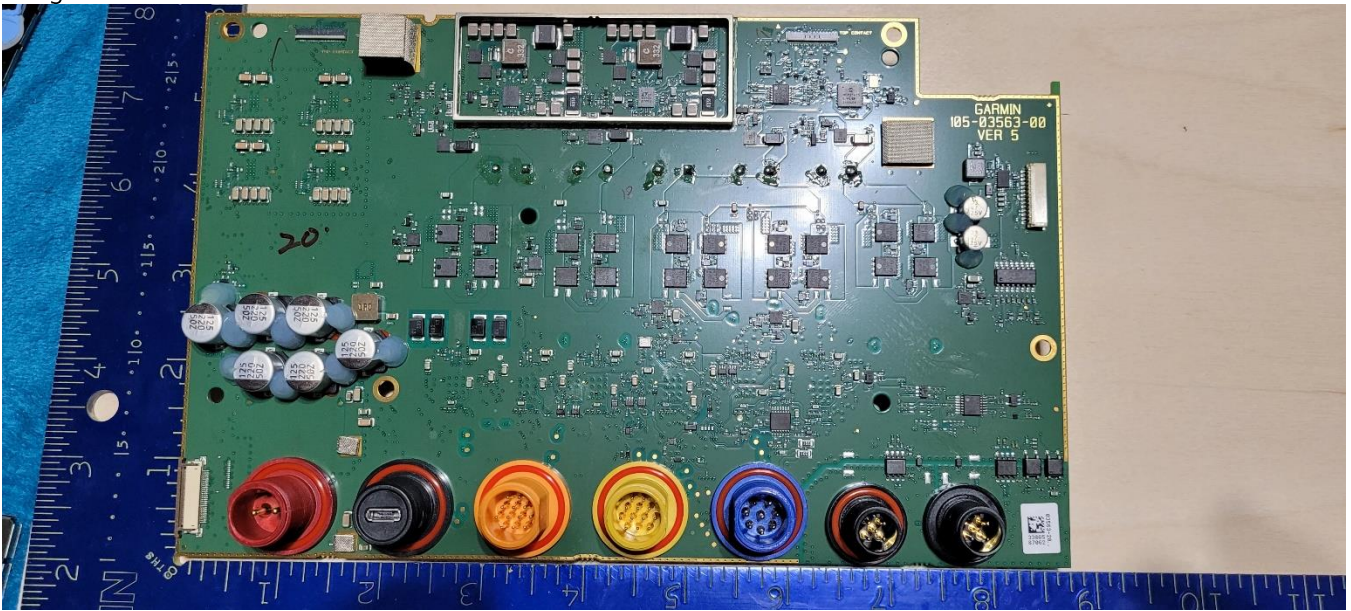


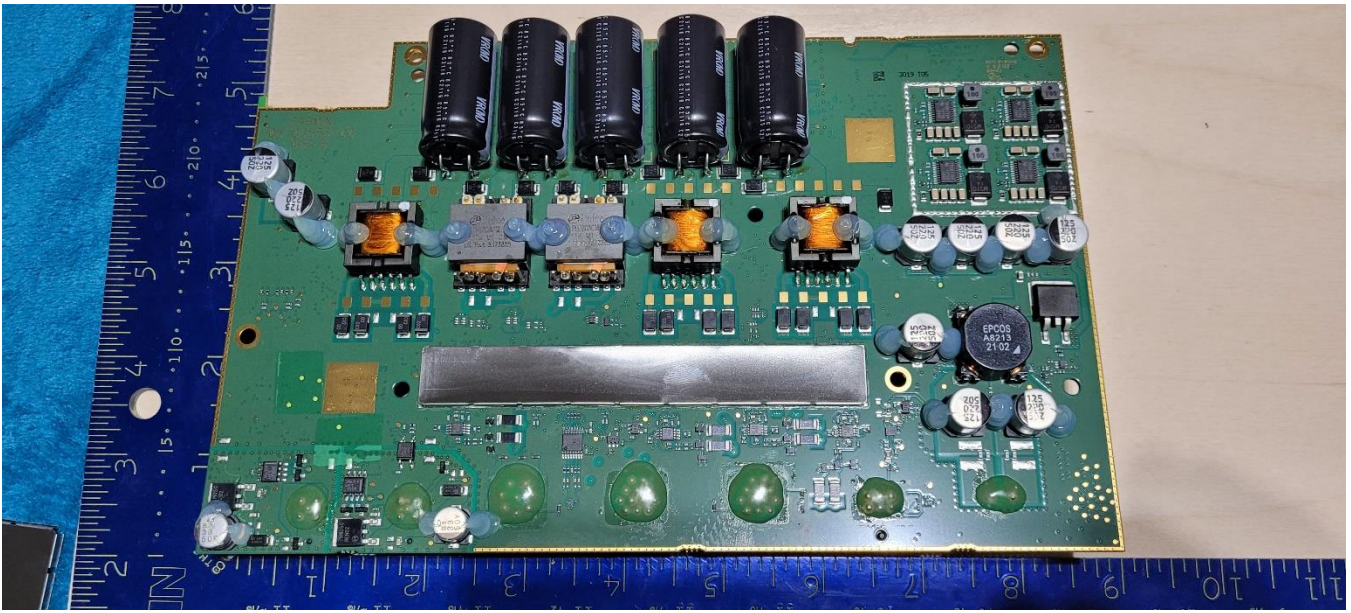
BLE / ANT antenna and WiFi antenna— Back



BLE / ANT antenna and WiFi antenna - Front

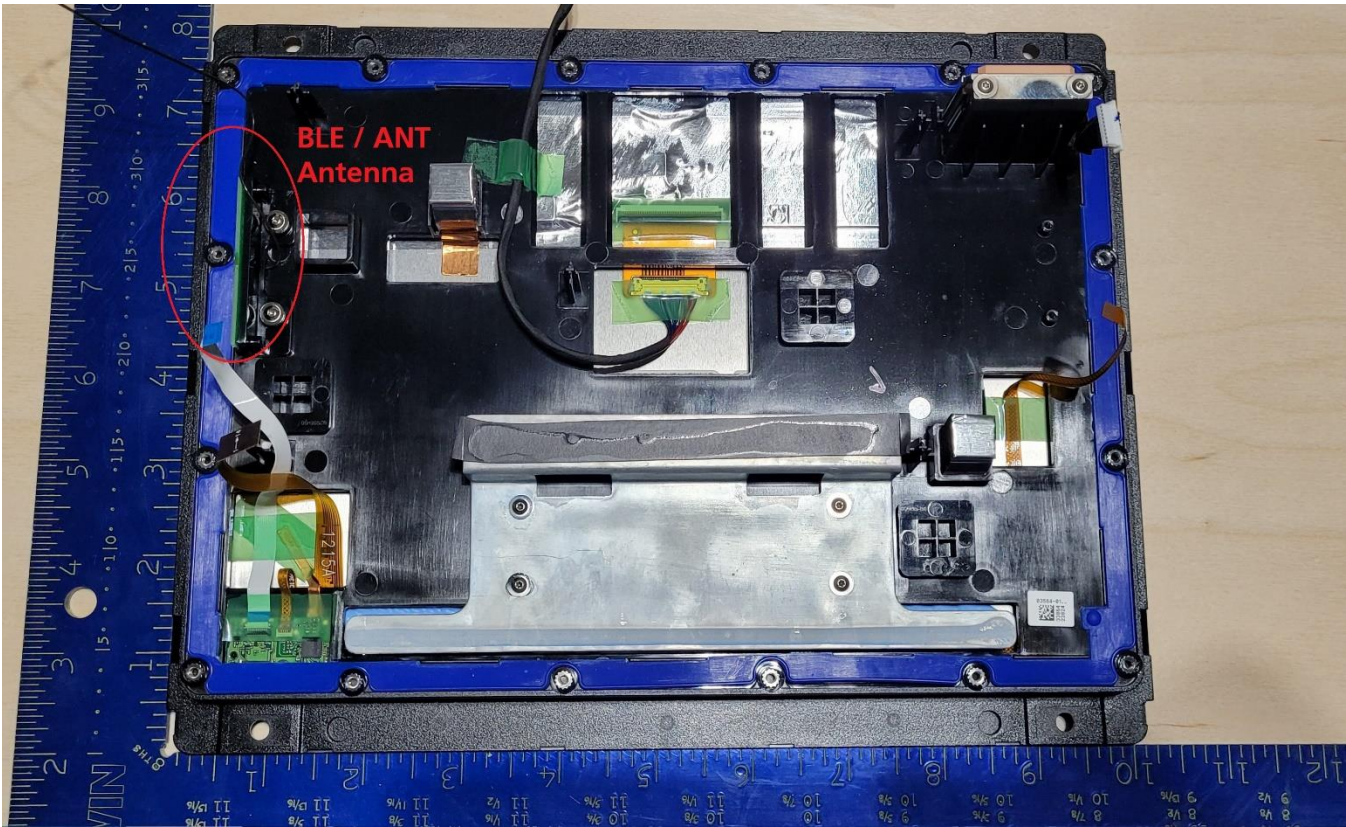
Daughter PCBA



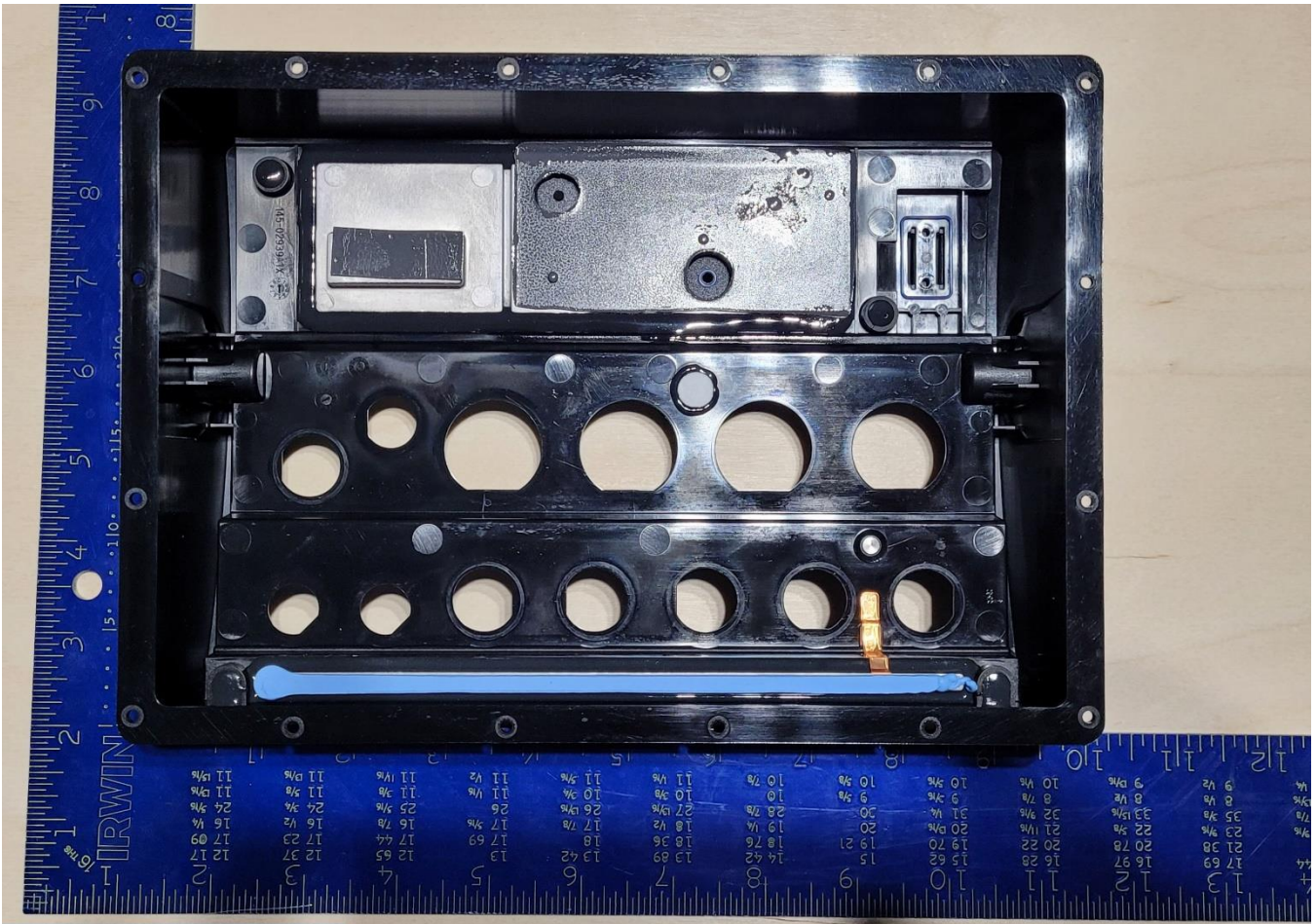


Garmin AA3562 Internal Photos GPSMAP 8x10xsv

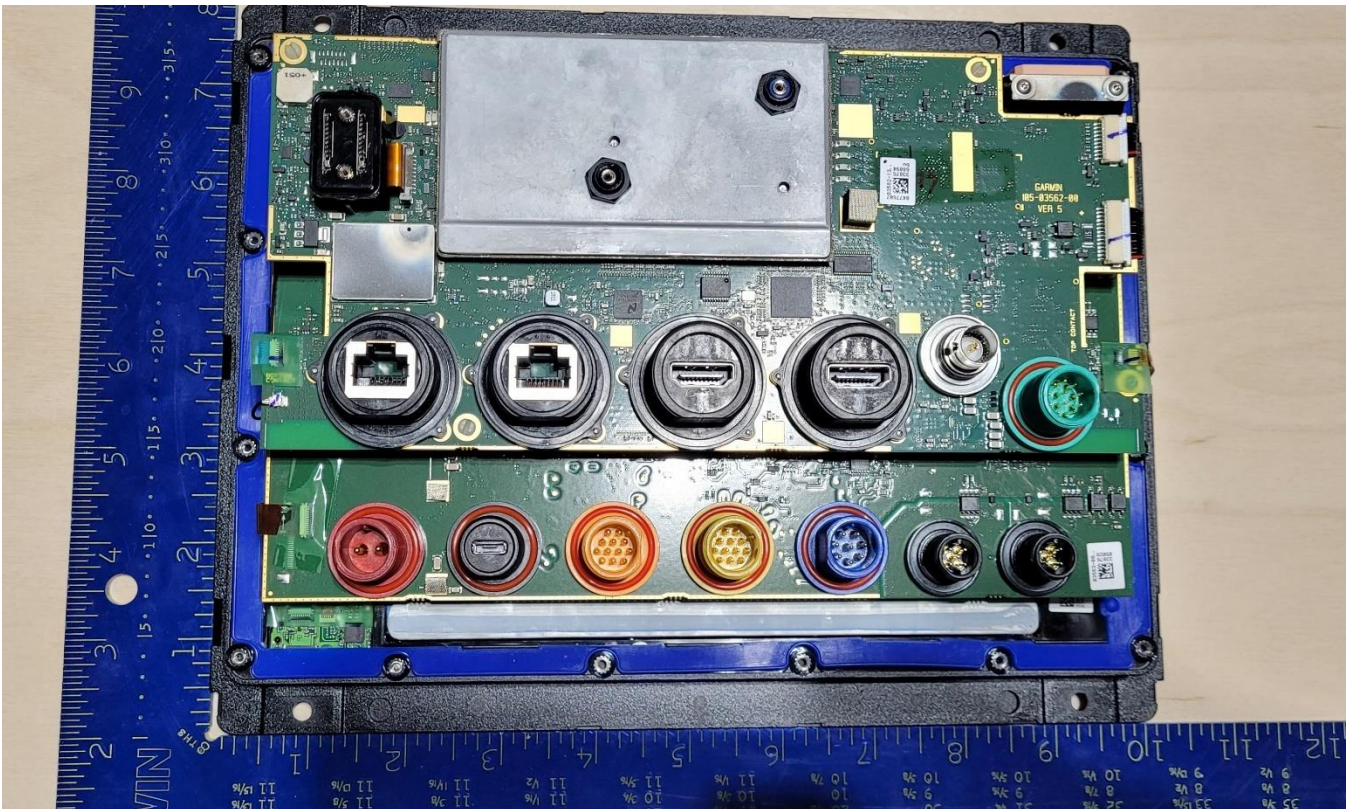
FRONT



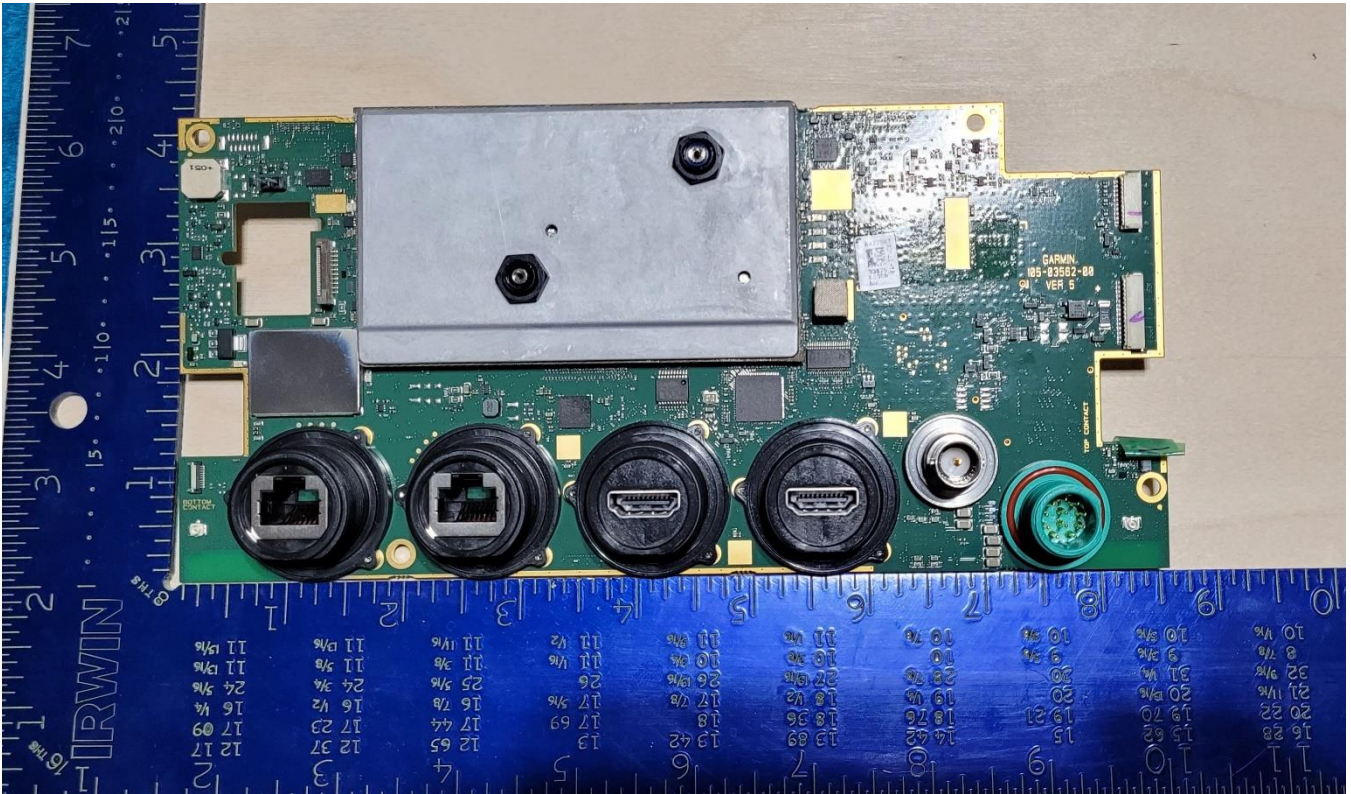
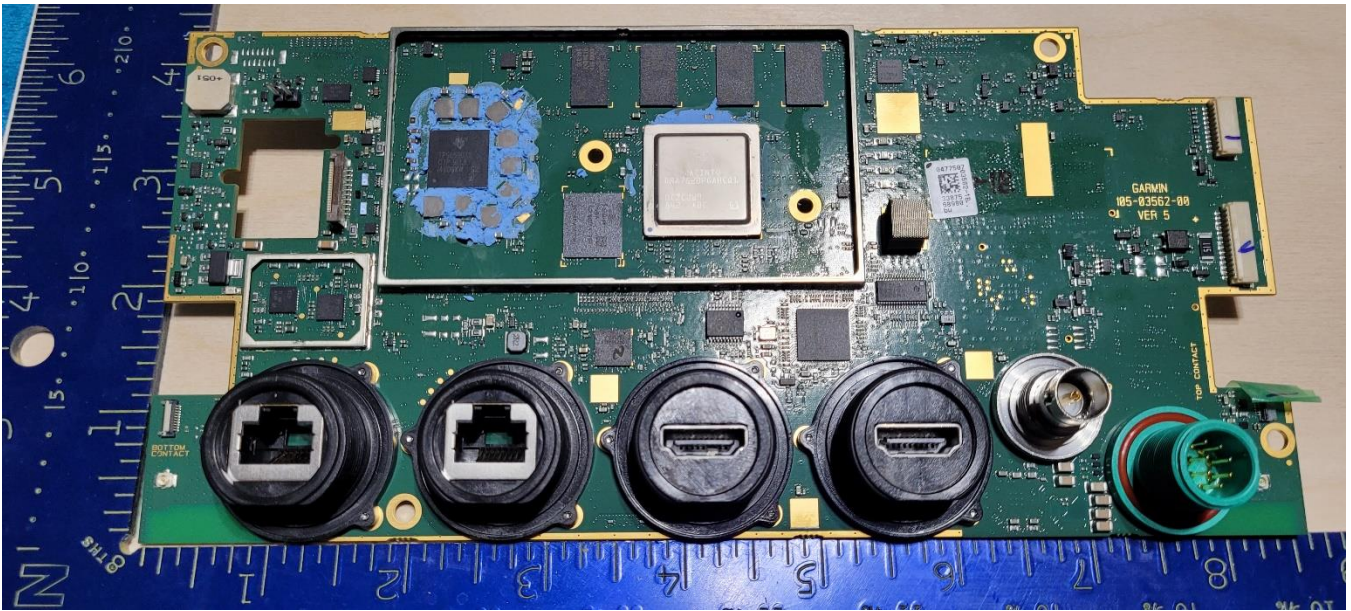
REAR

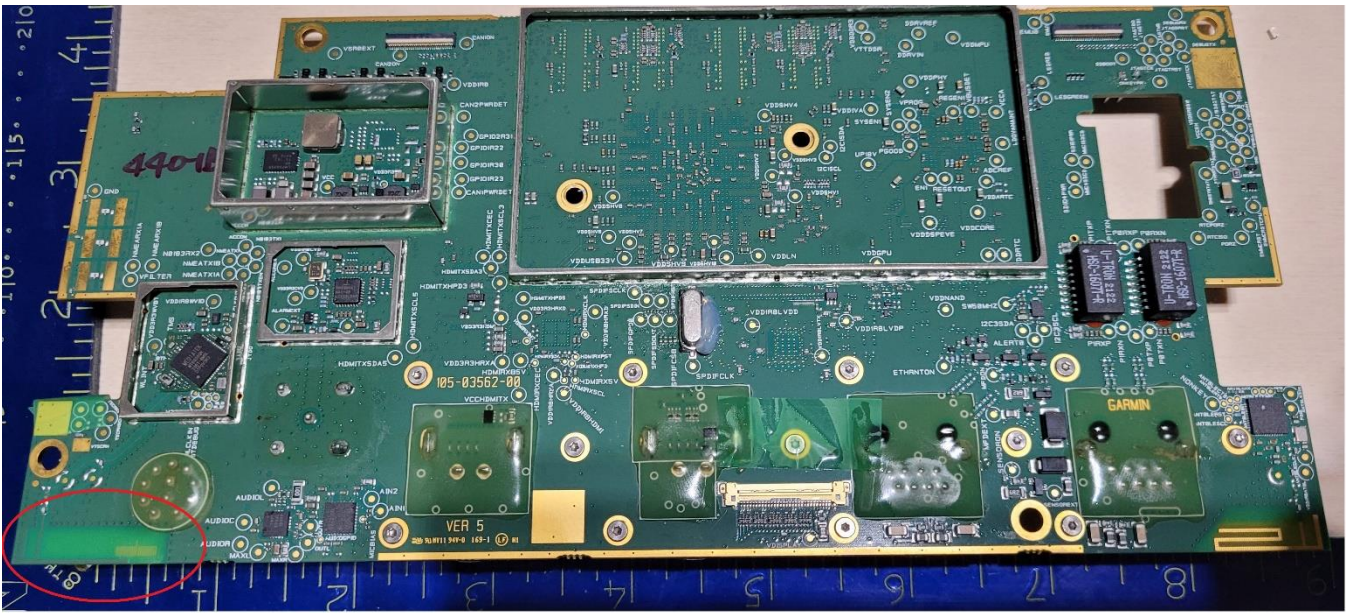


PCBAs

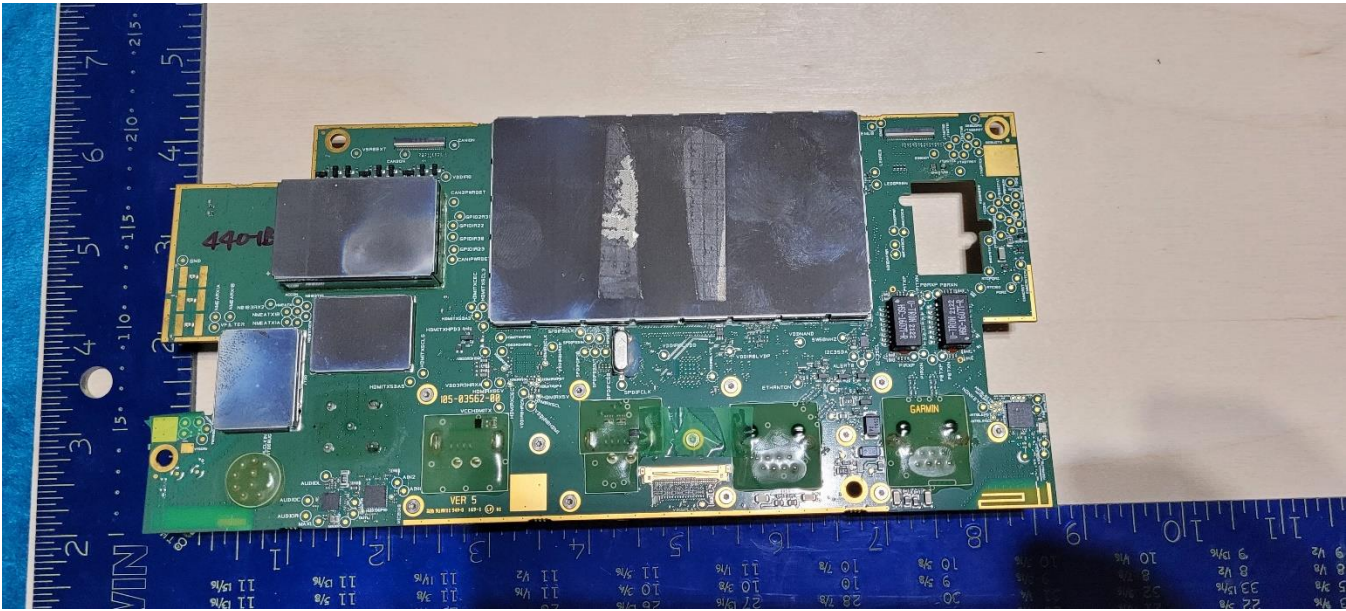


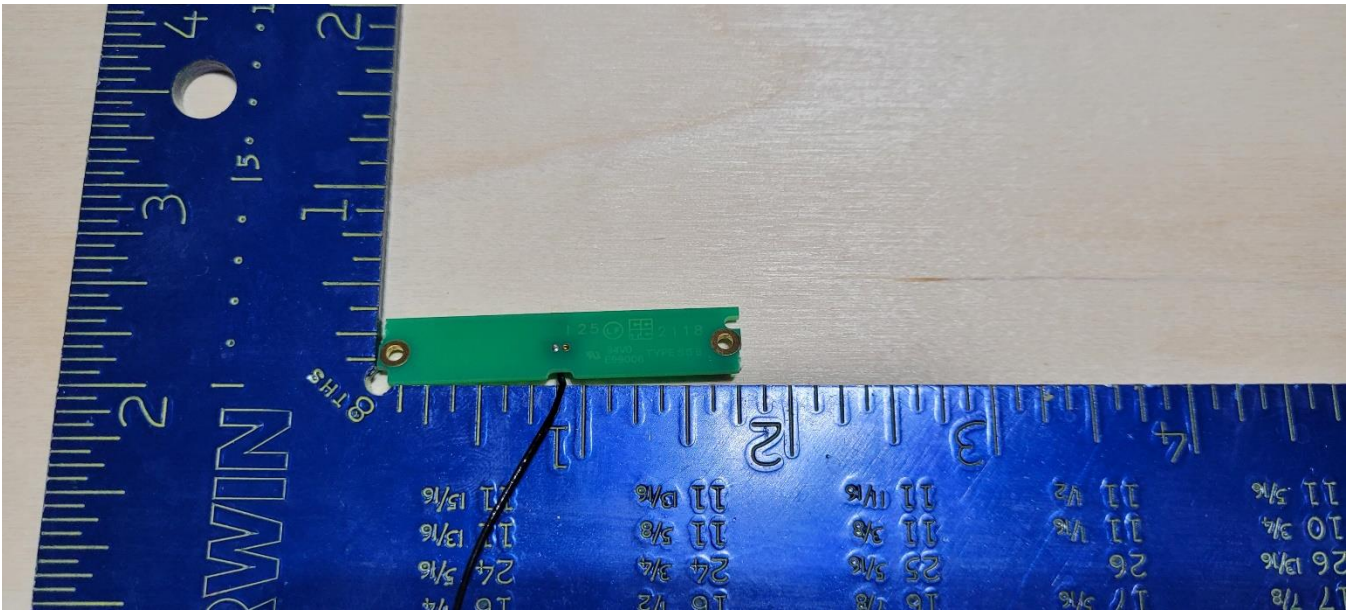
Main PCBA – contains RF transceivers



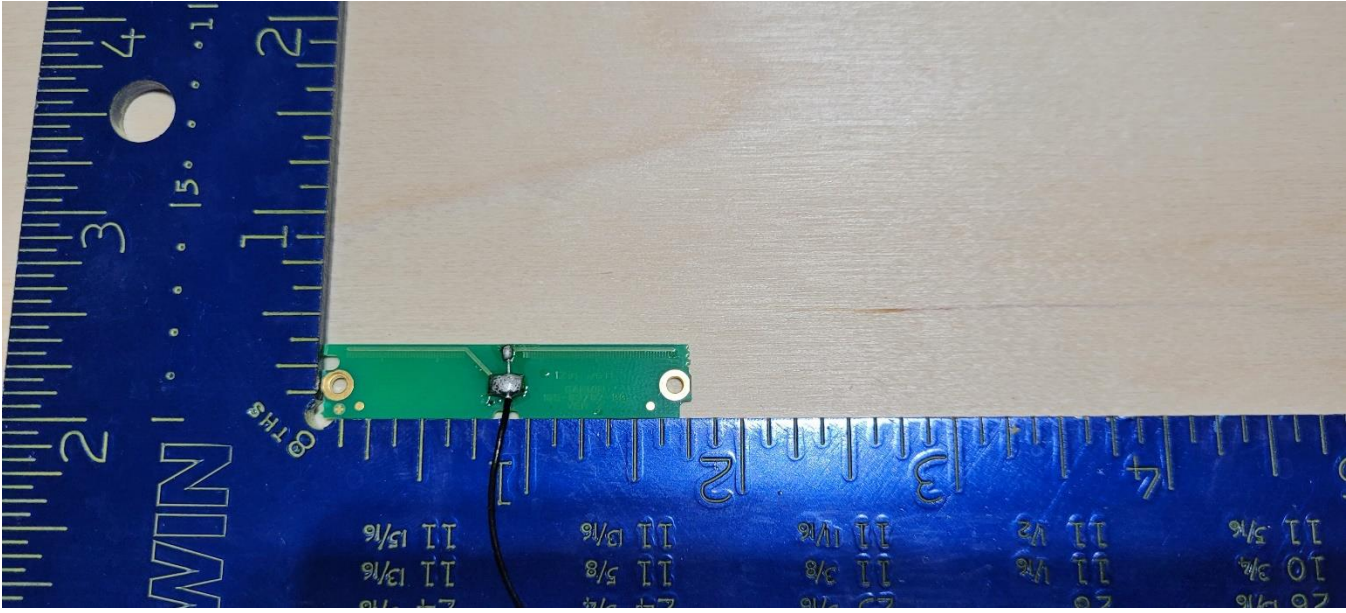


WiFi Antenna





BLE / ANT antenna – Back



BLE / ANT antenna - Front

Daughter PCBA

