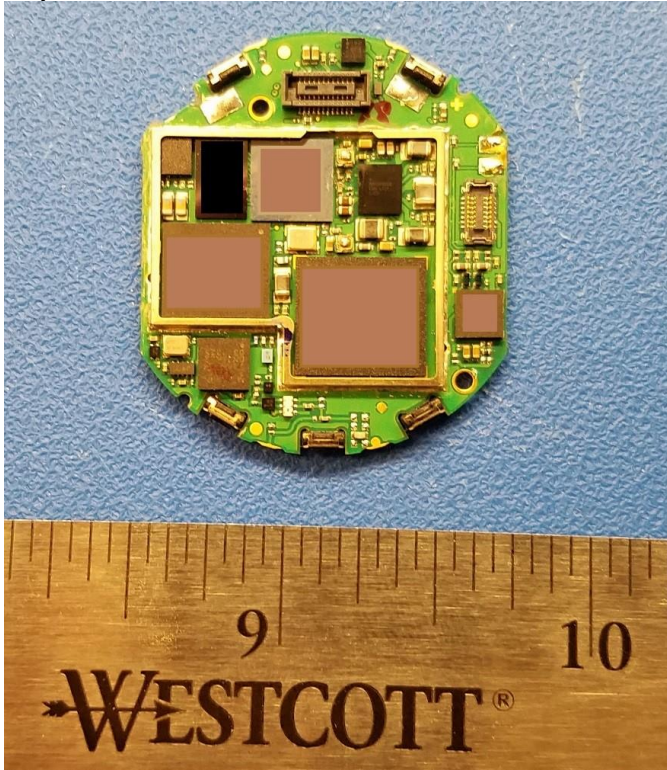
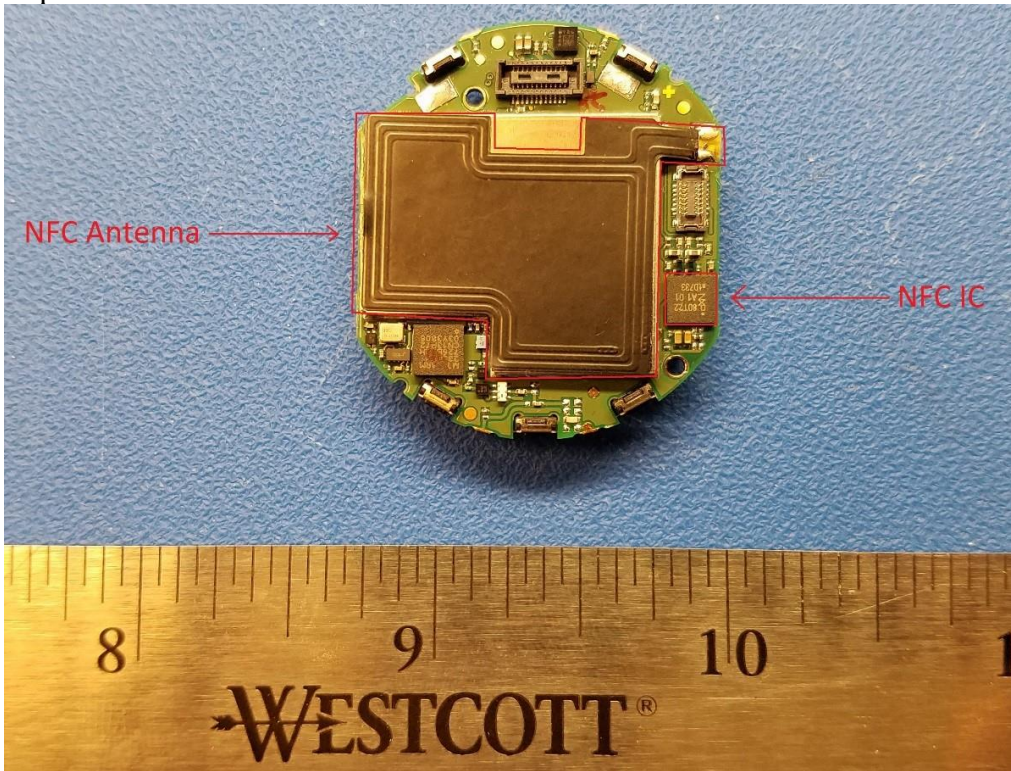


Top PCB no shield



Top PCB shield

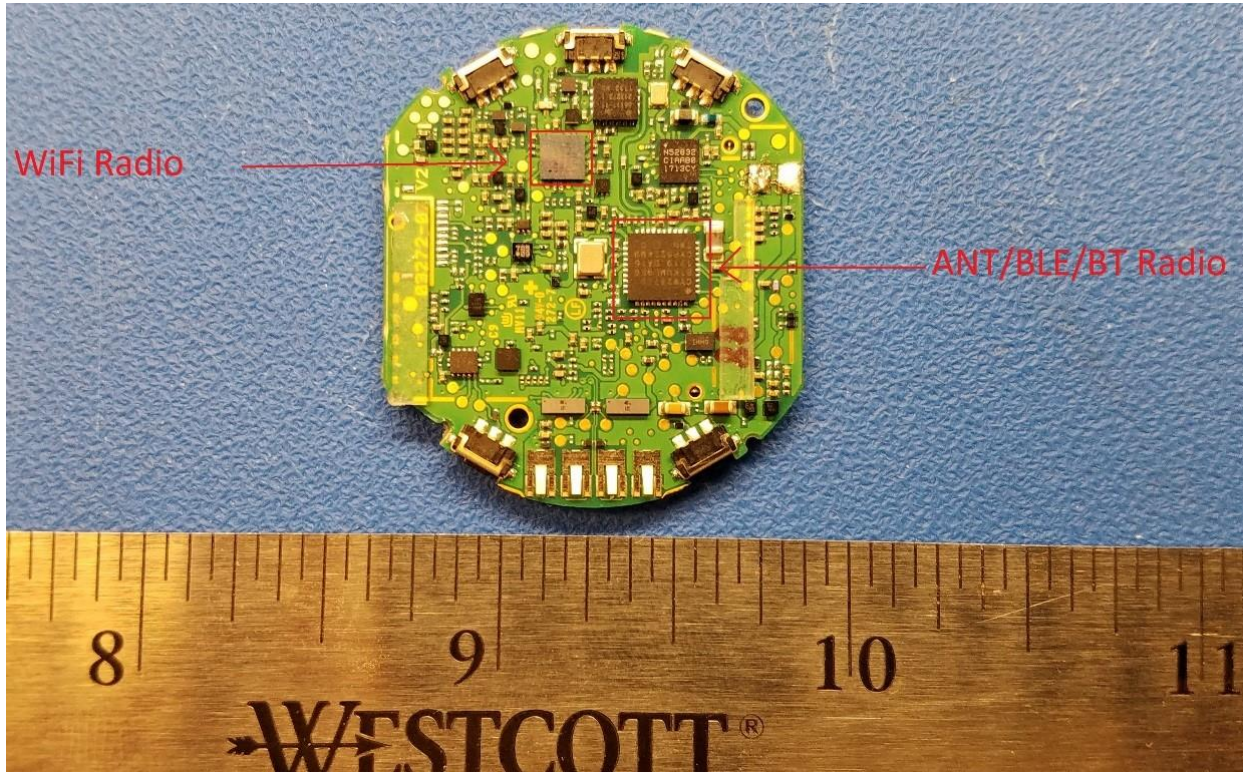


Rogers Labs, Inc.
4405 West 259th Terrace
Louisburg, KS 66053
Phone/Fax: (913) 837-3214
Revision 1

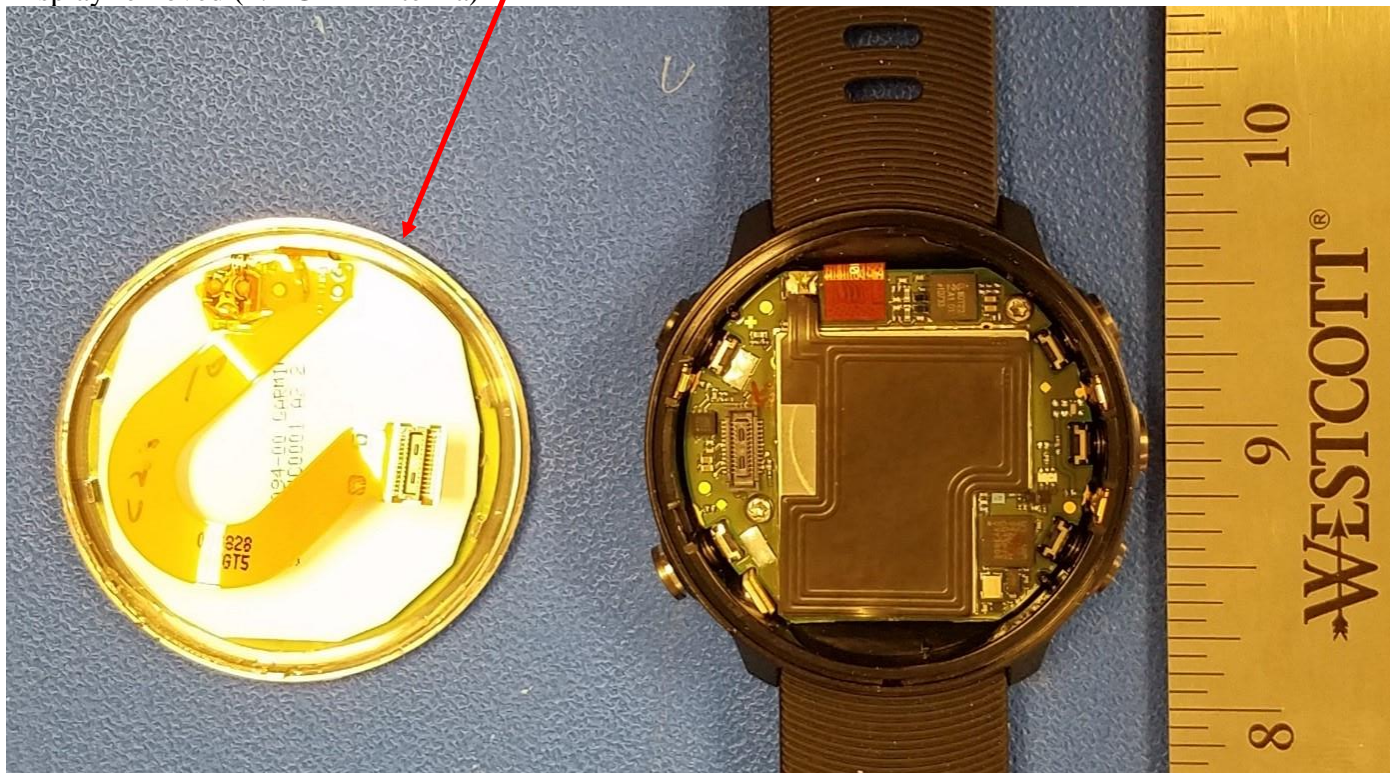
Garmin International, Inc.
Model: AA3272
Test #: 171002 1212
Test to: CFR47 15C, RSS-247, RSS-210
File: AA3272 IntPho

SN's: 3958811086 / 1067
FCC ID: IPH-A3272
IC: 1792A-A3272
Date: January 12, 2018
Page 1 of 4

Bottom PCB



Display removed (2.4 GHz Antenna)

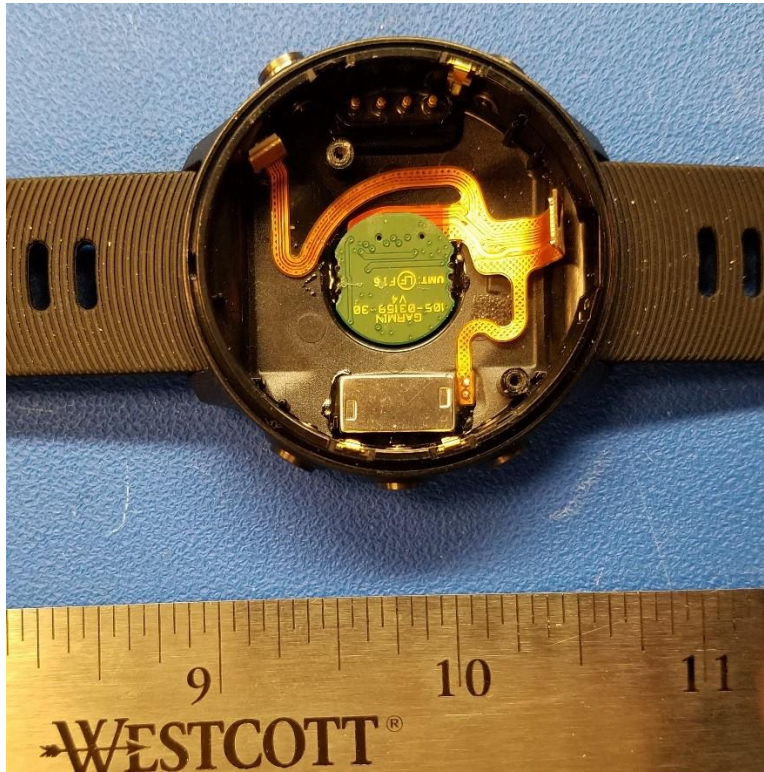


Rogers Labs, Inc.
4405 West 259th Terrace
Louisburg, KS 66053
Phone/Fax: (913) 837-3214
Revision 1

Garmin International, Inc.
Model: AA3272
Test #: 171002 1212
Test to: CFR47 15C, RSS-247, RSS-210
File: AA3272 IntPho

SN's: 3958811086 / 1067
FCC ID: IPH-A3272
IC: 1792A-A3272
Date: January 12, 2018
Page 2 of 4

Rear FPC

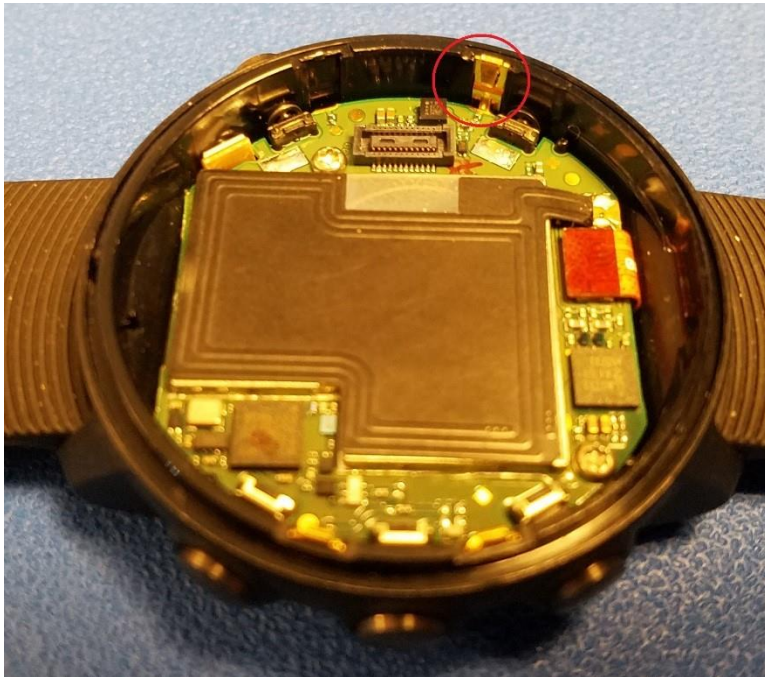
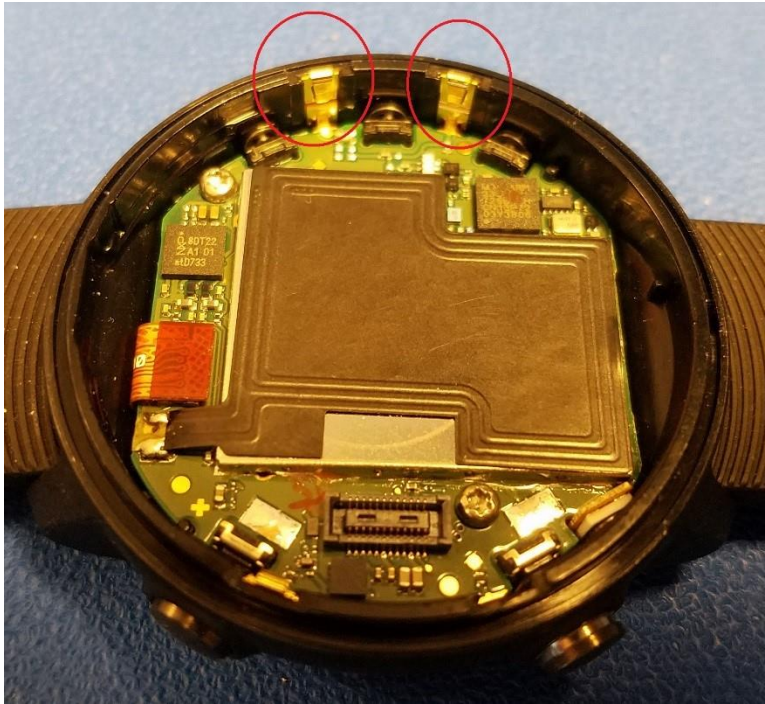


Rogers Labs, Inc.
4405 West 259th Terrace
Louisburg, KS 66053
Phone/Fax: (913) 837-3214
Revision 1

Garmin International, Inc.
Model: AA3272
Test #: 171002 1212
Test to: CFR47 15C, RSS-247, RSS-210
File: AA3272 IntPho

SN's: 3958811086 / 1067
FCC ID: IPH-A3272
IC: 1792A-A3272
Date: January 12, 2018
Page 3 of 4

2.4 GHz Contacts



Rogers Labs, Inc.
4405 West 259th Terrace
Louisburg, KS 66053
Phone/Fax: (913) 837-3214
Revision 1

Garmin International, Inc.
Model: AA3272
Test #: 171002 1212
Test to: CFR47 15C, RSS-247, RSS-210
File: AA3272 IntPho

SN's: 3958811086 / 1067
FCC ID: IPH-A3272
IC: 1792A-A3272
Date: January 12, 2018
Page 4 of 4