



Test Report Serial Number:
 Test Report Date:
 Project Number:

45461413 R1.2
8 January 2018
1391

SAR Test Report - Class II Permissive Change

Applicant:



Garmin International Inc.
1200 East 151 St.
Olathe, KS, 66062
USA

Maximum Reported 10g SAR			
FCC	Body	0.65	W/kg
ISED	Body	0.72	
General Pop. Limit:		4.00	

FCC ID:

IPH-A3119-00

Product Model Number / HVIN

AA3119-00

ISED Registration Number

1792A-A311900

Product Name / PMN

Fenix 5

In Accordance With:

FCC 47 CFR §2.1093

Radiofrequency Radiation Exposure Evaluation: Portable Devices

IC RSS-102 Issue 5

Radio Frequency Exposure Compliance of Radiocommunication Apparatus (All Frequency Bands)

Approved By:

Ben Hewson, President

Celltech Labs Inc.
 21-364 Lougheed Rd.
 Kelowna, BC, V1X 7R8
 Canada



Test Lab Certificate: 2470.01



**Industry
Canada**

IC Registration 3874A-1



FCC Registration: 714830

This report shall not be reproduced in any form without the expressed written consent of Celltech Labs Inc.

Table of Contents

1.0 DOCUMENT CONTROL.....	4
2.0 CLIENT AND DEVICE INFORMATION.....	5
3.0 NORMATIVE REFERENCES.....	6
4.0 STATEMENT OF COMPLIANCE.....	7
5.0 SAR MEASUREMENT SYSTEM.....	8
6.0 RF CONDUCTED POWER MEASUREMENT.....	9
TABLE 6.0 CONDUCTED POWER MEASUREMENTS.....	9
7.0 NUMBER OF TEST CHANNELS (N_C) AND CONFIGURATIONS.....	10
8.0 ACCESSORIES EVALUATED.....	11
TABLE 8.0 ACCESSORIES EVALUATED.....	11
9.0 SAR MEASUREMENT SUMMARY.....	12
TABLE 9.0: MEASURED RESULTS – EXTREMITY – BACK SURFACE.....	12
TABLE 9.1: MEASURED RESULTS – EXTREMITY – OTHER DUT SURFACES.....	13
10.0 SCALING OF MAXIMUM MEASURE SAR.....	14
TABLE 10.0 SAR SCALING.....	14
TABLE 10.1 FLUID SENSITIVITY CALCULATION (10G).....	15
11.0 SAR EXPOSURE LIMITS.....	16
TABLE 11.0 EXPOSURE LIMITS.....	16
12.0 DETAILS OF SAR EVALUATION.....	17
12.0 DAY LOG.....	17
12.1 DUT SETUP AND CONFIGURATION.....	18
12.2 DUT POSITIONING.....	18
12.3 GENERAL PROCEDURES AND REPORT.....	19
12.4 FLUID DIELECTRIC AND SYSTEMS PERFORMANCE CHECK.....	20
12.5 SCAN RESOLUTION 100MHz TO 2GHz.....	20
12.6 SCAN RESOLUTION 2GHz TO 3GHz.....	21
12.7 SCAN RESOLUTION 5GHz TO 6GHz.....	21
13.0 MEASUREMENT UNCERTAINTIES.....	22
TABLE 13.0 MEASUREMENT UNCERTAINTY.....	22
TABLE 13.1 CALCULATION OF DEGREES OF FREEDOM.....	23
14.0 FLUID DIELECTRIC PARAMETERS.....	24
TABLE 14.0 FLUID DIELECTRIC PARAMETERS 2450MHz BODY TSL.....	24
TABLE 14.1 FLUID DIELECTRIC PARAMETERS 2450MHz BODY TSL.....	26
15.0 SYSTEM VERIFICATION TEST RESULTS.....	28
TABLE 15.0 SYSTEM VERIFICATION RESULTS 2450MHz BODY TSL.....	28
TABLE 15.1 SYSTEM VERIFICATION RESULTS 2450MHz BODY TSL.....	29
16.0 MEASUREMENT SYSTEM SPECIFICATIONS.....	30
TABLE 16.0 MEASUREMENT SYSTEM SPECIFICATIONS.....	30

<i>17.0 TEST EQUIPMENT LIST</i>	32
TABLE 17.0 EQUIPMENT LIST AND CALIBRATION	32
<i>18.0 FLUID COMPOSITION</i>	33
TABLE 18.0 FLUID COMPOSITION 2450MHZ BODY TSL	33
<i>APPENDIX A – SYSTEM VERIFICATION PLOTS</i>	34
<i>APPENDIX B – MEASUREMENT PLOTS OF MAXIMUMUM MEASURED SAR</i>	38
<i>APPENDIX C - SETUP PHOTOS</i>	55
<i>APPENDIX D – DUT AND ACCESSORY PHOTOS</i>	62
<i>APPENDIX E – PROBE CALIBRATION</i>	67
<i>APPENDIX F – DIPOLE CALIBRATION</i>	68
<i>APPENDIX G - PHANTOM</i>	69

1.0 DOCUMENT CONTROL

Samples Tested By:	Trevor Whillock		
Report Prepared By:	Art Voss		
Report Reviewed By:	Ben Hewson		
Report Issue Number	Description	By	Report Issue Date
R0.0	Draft	Art Voss	22 December 2017
R1.1	Revised Report Number	Art Voss	3 January 2018
R1.2	Correction to HVIN	Art Voss	8 January 2018

2.0 CLIENT AND DEVICE INFORMATION

Client Information	
Applicant Name	Garmin International Inc.
Applicant Address	1200 East 151 St.
	Olathe, KS,66062
	USA
DUT Information	
Device Identifier(s):	FCC ID: IPH-A3119-00
	IC: 1792A-A311900
Type of Equipment:	Digital Transmission System (DTS) FCC Part 15, RSS 247
	Unlicensed National Information Infrastructure (NII) FCC Part 15
	Spread Spectrum Transmitter (DSS) FCC Part 15
Device Model(s) / HVIN:	Fenix 5
Device Marketing Name / PMN:	Fenix 5
Test Sample Serial No.:	T/A Sample - Identical Prototype
Transmit Frequency Range:	BLE: 2402 - 2480 MHz
	WiFi: 2412 - 2462 MHz
Number of Channels:	n/a
Manuf. Max. Rated Output Power:	ANT: 2.73dBm (CW Test Mode), BLE: -1.48dBm (CW Test Mode)
	WiFi: 23.5dBm (CW Test Mode Only)
Modulation:	DSSS, OFDM, GFSK, CW
Duty Cycle:	100%
DUT Power Source:	5V USB, Internal Li-ion battery
Deviation(s) from standard/procedure:	None
Modification of DUT:	None

3.0 NORMATIVE REFERENCES

Normative References*	
ANSI / ISO 17025:2005	General Requirements for competence of testing and calibration laboratories
FCC CFR Title 47 Part 2 Title 47: Part 2.1093:	Code of Federal Regulations Telecommunication Radiofrequency Radiation Exposure Evaluation: Portable Devices
Health Canada Safety Code 6 (2015)	Limits of Human Exposure to Radiofrequency Electromagnetic Energy in the Frequency Range from 3kHz to 300GHz
Industry Canada Spectrum Management & Telecommunications Policy RSS-102 Issue 5:	Radio Frequency Exposure Compliance of Radiocommunication Apparatus (All Frequency Bands)
IEEE International Committee on Electromagnetic Safety IEEE 1528-2013:	IEEE Recommended Practice for Determining the Peak Spatial-Average Specific Absorption Rate (SAR) in the Human Head from Wireless Communications Devices: Measurement Techniques
IEC International Standard IEC 62209-2 2010	Human exposure to radio frequency fields from hand-held and body-mounted wireless communication devices - Part 2
FCC KDB KDB 865664 D01v01r04	SAR Measurement Requirements for 100MHz to 6GHz
FCC KDB KDB 447498 D01v06	Mobile and Portable Devices RF Exposure Procedures and Equipment Authorization Policies
FCC KDB KDB 248227 D01v02r02	SAR Test Guidance for IEEE 802.11 (WiFi) Transmitters
* When the issue number or issue date is omitted, the latest version is assumed.	

4.0 STATEMENT OF COMPLIANCE

This measurement report demonstrates that samples of the product model(s) were evaluated for Specific Absorption Rate (SAR) on the date(s) shown, in accordance with the Measurement Procedures cited and were found to comply with the Standard(s) Applied based on the Exposure Limits of the Use Group indicated for which the product is intended to be used.

Applicant: Garmin International Inc.	Model / HVIN: AA3119-00	
Standard(s) Applied: FCC 47 CFR §2.1093 Health Canada's Safety Code 6	Measurement Procedure(s): FCC KDB 865664, FCC KDB 447498, FCC KDB 248227 Industry Canada RSS-102 Issue 5 IEEE Standard 1528-2013, IEC 62209-2	
Reason For Issue: <input type="checkbox"/> New Certification <input type="checkbox"/> Class I Permissive Change <input checked="" type="checkbox"/> Class II Permissive Change	Use Group: <input checked="" type="checkbox"/> General Population / Uncontrolled <input type="checkbox"/> Occupational / Controlled	Limits Applied: <input type="checkbox"/> 1.6W/kg - 1g Volume <input type="checkbox"/> 8.0W/kg - 1g Volume <input checked="" type="checkbox"/> 4.0W/kg - 10g Volume
Reason for Change: Increased power on the BT/ANT transmitter and decreased power on the WIFI transmitter	Date(s) Evaluated: December 14, 15 & 18, 2017	

The results of this investigation are based solely on the test sample(s) provided by the applicant which was not adjusted, modified or altered in any manner whatsoever except as required to carry out specific tests or measurements. A description of the device, operating configuration, detailed summary of the test results, methodologies and procedures used during this evaluation, the equipment used and the various provisions of the rules are included in this test report.

I attest that the data reported herein is true and accurate within the tolerance of the Measurement Instrument Uncertainty; that all tests and measurements were performed in accordance with accepted practices or procedures; and that all tests and measurements were performed by me or by trained personnel under my direct supervision. The results of this investigation are based solely on the test sample(s) provided by the client which were not adjusted, modified or altered in any manner whatsoever, except as required to carry out specific tests or measurements. This test report has been completed in accordance with ISO/IEC 17025.



Art Voss, P.Eng.
Technical Manager
Celltech Labs Inc.
22 December 2017
Date



5.0 SAR MEASUREMENT SYSTEM

SAR Measurement System

Celltech Labs Inc. SAR measurement facility employs a Dosimetric Assessment System (DASY™) manufactured by Schmid & Partner Engineering AG (SPEAG™) of Zurich, Switzerland. The DASY6 measurement system is comprised of the measurement server, a robot controller, a computer, a near-field probe, a probe alignment sensor, an Elliptical Planar Phantom (ELI) phantom and a specific anthropomorphic mannequin (SAM) phantom for Head and/or Body SAR evaluations. The robot is a six-axis industrial robot performing precise movements to position the probe to the location (points) of maximum electromagnetic field (EMF). A cell controller system contains the power supply, robot controller and a teach pendant (Joystick) to control the robot's servo motors. The Staubli robot is connected to the cell controller to allow software manipulation of the robot. A data acquisition electronic (DAE) circuit performs the signal amplification, signal multiplexing, AD-conversion, offset measurements, mechanical surface detection, collision detection, etc. is connected to the Electro-optical coupler (EOC). The EOC performs the conversion from the optical form the DAE to digital electronic signal and transfers data to the DASY6 measurement server. The DAE4 utilizes a highly sensitive electrometer-grade preamplifier with auto-zeroing, a channel and gain-switching multiplexer, a fast 16-bit AD-converter, a command decoder and a control logic unit. Transmission to the DASY6 measurement server is accomplished through an optical downlink for data and status information and an optical uplink for commands and clock lines. The mechanical probe-mounting device includes two different sensor systems for frontal and sidewise probe contacts. The sensor systems are also used for mechanical surface detection and probe collision detection. The robot utilizes a controller with built in VMbus computer.



DASY 6 SAR System with SAM Phantom



DASY 6 Measurement Controller

6.0 RF CONDUCTED POWER MEASUREMENT

Table 6.0 Conducted Power Measurements

Conducted Power Measurements				
Channel	Frequency (MHz)	Mode*	Measured Power (dBm)	Data Rate
ANT - L	2402	CW	2.64	
ANT - L		Beacon	2.58	
ANT - M	2441	CW	2.73	
ANT - M		Beacon	2.54	
ANT - H	2480	CW	2.58	
ANT - H		Beacon	2.49	
WiFi - 1	2412	CW	23.83	
WiFi - 6	2437		23.87	
WiFi - 11	2462		23.72	
WiFi - 13	2472		23.57	
WiFi - 6	2437	802.11b	11.45	1mbps
		802.11b	12.86	5.5mbps
		802.11b	12.77	11mbps
		802.11g	9.63	6mbps
		802.11g	10.30	24mbps
		802.11g	10.19	54mbps
		802.11n	10.48	MCS0
		802.11n	9.27	MCS4
BLE - 0	2402	CW	-1.68	
		PRB29	-1.80	Tx Len 0
		0x05	-1.80	Tx Len 0
		0x55	-1.81	Tx Len 0
BLE - 19	2440	CW	-1.48	
		PRB29	-1.79	Tx Len 0
		0x05	-1.63	Tx Len 0
		0x55	-1.73	Tx Len 0
BLE - 39	2480	CW	-1.63	
		PRB29	-1.84	Tx Len 0
		0x05	-2.00	Tx Len 0
		0x55	-1.79	Tx Len 0
BLE - 0	2402	PRB29	-1.91	Tx Len 37
		0x05	-1.88	Tx Len 37
		0x55	-1.87	Tx Len 37

*CW mode produced the highest conducted output power. SAR was evaluated in CW and modulated modes. CW mode is a TEST MODE ONLY and is not representative of actual intended use. However for the purposes of this evaluation and for comparison to the original filing, SAR was evaluated predominately in CW mode and produced the more conservative SAR.

7.0 NUMBER OF TEST CHANNELS (N_c) AND CONFIGURATIONS

As per FCC KDB 248277, the required 802.11 test channels are Ch1, Ch6 and Ch 11. Due to the nature of this C2PC, the BLE and ANT channels were also evaluated. NOTE: These transmitters are not capable of simultaneous transmission. This device is a wrist-worn device and was evaluated for extremity SAR. Although the intended use is to be wrist-worn with the back side of the device in contact with the human skin, the device was evaluated on ALL surfaces using Head Tissue fluid. Head Tissue fluid demonstrated a more conservative SAR compare to Body Tissue fluid in the other test configurations.

8.0 ACCESSORIES EVALUATED

Table 8.0 Accessories Evaluated

Manufacturer's Accessory List						
Test Report ID Number	Manufacturer's Par Number	Description	UDC Group ⁽¹⁾	Type II Group ⁽²⁾	SAR ⁽³⁾ Evaluated	SAR ⁽⁴⁾ Tested
T1	320-01D69-00	Ca-Assy. Universal Charger	n/a	n/a	N	N
B1	013-00649-00	Metal Watch Band, SUS, Kestrel	n/a	n/a	Y	Y
B2	010-12496-00	Silicone Watch Band	n/a	n/a	Y	Y

9.0 SAR MEASUREMENT SUMMARY

Table 9.0: Measured Results – Extremity – Back Surface

Measured SAR Results (10g) - Extremity Configuration (FCC/ISED)																
Date	Plot ID #	DUT Model	Test Type	Test Freq.	Modulation	Accessories				DUT Spacing		Meas. Cond. Power (dBm)	Measured SAR (10g) 100% DC (W/kg)	SAR Drift (dB)		
						Antenna ID	Battery ID	Body ID	Audio ID	DUT (mm)	Antenna (mm)					
				(MHz)												
BODY 2.G WIFI																
14 Dec 2017	B1	Fenix	Touch 1 - Back	2437	CW	n/a	n/a	B1	n/a	0	0	23.87	0.270	-0.470		
14 Dec 2017	B2	Fenix	Touch 1 - Back	2437	CW	n/a	n/a	B2	n/a	0	0	23.87	0.249	-0.290		
15 Dec 2017	B3	Fenix	Touch 1 - Back	2437	802.11b-5.5mbps	n/a	n/a	B1	n/a	0	0	12.86	0.025	-0.480		
15 Dec 2017	B4	Fenix	Touch 1 - Back	2437	802.11g-24mbps	n/a	n/a	B1	n/a	0	0	10.30	0.005	-0.180		
15 Dec 2017	B5	Fenix	Touch 1 - Back	2437	802.11n-MCS0	n/a	n/a	B1	n/a	0	0	10.48	0.008	-0.420		
15 Dec 2017	B6	Fenix	Touch 1 - Back	2412	CW	n/a	n/a	B1	n/a	0	0	23.83	0.328	-0.370		
15 Dec 2017	B7	Fenix	Touch 1 - Back	2462	CW	n/a	n/a	B1	n/a	0	0	23.72	0.227	-0.380		
18 Dec 2017	B8	Fenix	Touch 1 - Back	2441	ANT CH-MID (CW)	n/a	n/a	B1	n/a	0	0	2.73	0.001	-0.830		
19 Dec 2017	B9	Fenix	Touch 1 - Back	2440	BLE (CW)	n/a	n/a	B1	n/a	0	0	2.54	0.001	2.36		
SAR Limit						Spatial Peak				Wrist-Worn		RF Exposure Category				
FCC 47 CFR 2.1093						Health Canada Safety Code 6				10 Gram Average		4.0 W/kg		General Population		

Table 9.1: Measured Results – Extremity – Other DUT Surfaces

Measured SAR Results (10g) - Extremity Configuration																
Date	Plot ID #	DUT Model	Test Type	Test Freq.	Modulation	Accessories				DUT Spacing		Meas. Cond. Power (dBm)	Measured SAR (10g) 100% DC (W/kg)	SAR Drift (dB)		
						Antenna ID	Battery ID	Body ID	Audio ID	DUT (mm)	Antenna (mm)					
				(MHz)		BODY 2.G WIFI										
19 Dec 2017	B7EU	Fenix 5	Touch 2 - Front	2412	CW	n/a	n/a	B1	n/a	0	0	23.83	0.632	-0.480		
19 Dec 2017	B8EU	Fenix 5	Touch 3 - Left	2412	CW	n/a	n/a	B1	n/a	0	0	23.83	0.056	-0.790		
20 Dec 2017	B9EU-2	Fenix 5	Touch 4 - Top	2412	CW	n/a	n/a	B1	n/a	0	0	23.83	0.013	-0.600		
20 Dec 2017	B10EU-2	Fenix 5	Touch 5 - Right	2412	CW	n/a	n/a	B1	n/a	0	0	23.83	0.046	-0.760		
20 Dec 2017	B11EU	Fenix 5	Touch 6 - Bottom	2412	CW	n/a	n/a	B1	n/a	0	0	23.83	0.017	-0.450		
SAR Limit						Spatial Peak				BODY		RF Exposure Category				
ICNIRP						ARPANSA				10 Gram Average		4.0 W/kg		General Population		

Reference Section 7.0 for details.

10.0 SCALING OF MAXIMUM MEASURE SAR

Table 10.0 SAR Scaling


Scaling of Maximum Measured SAR ⁽¹⁾								
Plot ID	Configuration	Freq (MHz)	Measured Fluid Deviation		Measured Conducted Power (dBm)	Measured Drift (dB)	Measured SAR (10g) (W/kg)	
			Permittivity	Conductivity				
B7EU	Hand	2412	-4.41%	6.70%	23.8	-0.480	0.632	
Step 1								
Fluid Sensitivity Adjustment								
Plot ID	Scale Factor		X	Measured SAR (W/kg)	=	Step 1 Adjusted SAR (10g) (W/kg)		
	(%)							
B7EU	2.480%		X	0.632	=	0.648		
Step 2								
Manufacturer's Tune-Up Tolerance								
Plot ID	Measured Conducted Power (dBm)	Rated Power (dBm)		Delta (dB)	+	Step 1 Adjusted SAR (W/kg)	=	Step 2 Adjusted SAR (10g) (W/kg)
	B7EU	23.8	23.5			0.3		+
Step 3 (ISED)								
Drift Adjustment								
Plot ID	Measured Drift (dB)		+	Step 2 Adjusted SAR (W/kg)		=	Step 3 Adjusted SAR (10g) (W/kg)	
	B7EU	-0.480		+	0.648			=
Step 4 (FCC)								
Simultaneous Transmission - Bluetooth and/or WiFi								
Plot ID	Rated Output Power (Pmax) (mW)	Freq (MHz)	Separation Distance (mm)	Estimated SAR (W/kg)	+	Step 2 Adjusted SAR (W/kg)	=	Step 4 Adjusted SAR (10g) (W/kg)
	B7EU	2.5	2412	0		0.100		+
Step 5								
Reported SAR								
Plot ID	FCC From Steps 1, 2 and 4 10g SAR (W/kg)			ISED From Steps 1 through 4 10g SAR (W/kg)				
	B7EU	0.648			0.724			

WiFi, BlueTooth (BLE) and ANT transmitters share the same antenna and cannot simultaneously transmit.

NOTES to Table 9.0	
<p>(1) Scaling of the Maximum Measured SAR is based on the highest, 100% duty cycle, Face, Body and/or Head SAR measured of ALL test channels, configurations and accessories used during THIS evaluation. The Measured Fluid Deviation parameters apply only to deviation of the tissue equivalent fluids used at the frequencies which produced the highest measured SAR. The Measured Conducted Power applies to the Conducted Power measured at the frequencies producing the highest Face and Body SAR. The Measured Drift is the SAR drift associated with that specific SAR measurement. The Reported SAR is the accumulation of all SAR Adjustments from the applicable Steps 1 through 4. The Plot ID is for identification of the SAR Measurement Plots in Annex A of this report.</p> <p>NOTE: Some of the scaling factors in Steps 1 through 4 may not apply and are identified by light gray text.</p>	
Step 1	Per IEC 62209-1 and FCC KDB 865664. Scaling required only when Measured Fluid Deviation is greater than 5%. If the Measured Fluid Deviation is greater than 5%, Table 10.1 will be shown and will indicate the SAR scaling factor in percent (%). SAR is MULTIPLIED by this scaling factor only when the scaling factor is positive (+).
Step 2	Per KDB 447498. Scaling required only when the difference (Delta) between the Measured Conducted Power and the Manufacturer's Rated Conducted Power is (-) Negative. The absolute value of Delta is ADDED to the SAR.
Step 3	Per IEC 62209-1. Scaling required only when Measured Drift is (-) Negative. The absolute value of Measured Drift is added to Reported or Simultaneous Reported SAR.
Step 4	Per KDB 447498 4.3.2. The SAR, either measured or calculated, of ANY and ALL simultaneous transmitters must be added together and includes all contributors.
Step 5	The Reported SAR is the Maximum Final Adjusted Cumulative SAR from the applicable Steps 1 through 4 and are reported on Page 1 of this report.

Table 10.1 Fluid Sensitivity Calculation (10g)

Fluid Sensitivity Calculation (10g)	
Delta SAR = Ce * Delta Er + C(sigma)*Delta Sigma	
Frequency (GHz)	Plot ID
2.412	B7EU
Ce	-0.2248
Cσ	0.4776
Δ E	-4.41
Δσ	6.70%
ΔSAR	2.48%
Scale Factor Is Positive. Scaling Required	

<p>I attest that the data reported herein is true and accurate within the tolerance of the Measurement Instrument Uncertainty; that all tests and measurements were performed in accordance with accepted practices or procedures; and that all tests and measurements were performed by me or by trained personnel under my direct supervision. The results of this investigation are based solely on the test sample(s) provided by the client which were not adjusted, modified or altered in any manner whatsoever, except as required to carry out specific tests or measurements. This test report has been completed in accordance with ISO/IEC 17025.</p>	
	<p>Trevor Whillock Test Lab Engineer Celltech Labs Inc.</p>
	<p>6 December 2017</p>
	<p>Date</p>

11.0 SAR EXPOSURE LIMITS

Table 11.0 Exposure Limits

SAR RF EXPOSURE LIMITS			
FCC 47 CFR§2.1093	Health Canada Safety Code 6	General Population / Uncontrolled Exposure ⁽⁴⁾	Occupational / Controlled Exposure ⁽⁵⁾
Spatial Average ⁽¹⁾ (averaged over the whole body)		0.08 W/kg	0.4 W/kg
Spatial Peak ⁽²⁾ (Head and Trunk averaged over any 1 g of tissue)		1.6 W/kg	8.0 W/kg
Spatial Peak ⁽³⁾ (Hands/Wrists/Feet/Ankles averaged over 10 g)		4.0 W/kg	20.0 W/kg
(1) The Spatial Average value of the SAR averaged over the whole body.			
(2) The Spatial Peak value of the SAR averaged over any 1 gram of tissue, defined as a tissue volume in the shape of a cube and over the appropriate averaging time.			
(3) The Spatial Peak value of the SAR averaged over any 10 grams of tissue, defined as a tissue volume in the shape of a cube and over the appropriate averaging time.			
(4) Uncontrolled environments are defined as locations where there is potential exposure to individuals who have no knowledge or control of their potential exposure.			
(5) Controlled environments are defined as locations where there is potential exposure to individuals who have knowledge of their potential exposure and can exercise control over their exposure.			

12.0 DETAILS OF SAR EVALUATION

12.0 Day Log

DAY LOG					Fluid Dielectric	SPC	Test
Date	Ambient Temp °C	Fluid Temp °C	Humidity	TSL			
13 Dec 2017	28	23.2	36%	2450B	X		
14 Dec 2017	27	22.4	36%	2450B		X	X
15 Dec 2017	27	22.6	36%	2450B			X
18 Dec 2017	27	22.4	34%	2450B			X
19 Dec 2017	27	23.4	36%	2450B	X	X	X

12.1 DUT Setup and Configuration

DUT Setup and Configuration	
Overview	<p>The DUT was evaluated for SAR in accordance with the procedures described in IEEE 1528, FCC KDB 865646 and RSS-102. Since the overall diagonal dimension of the display is < 20cm the device was evaluated at a phantom separation distance of less than 5mm on all surfaces and edges where the transmitter was located less than 25mm from that edge or surface.</p> <p>The Device was capable of transmitting at various modulations and data rates. The Conducted Power was higher when measured in CW than any other configuration. The DUT was evaluated for SAR at the maximum conducted output power level, preset by the manufacturer.</p> <p>Each SAR evaluation was performed with a fully charged battery.</p>

12.2 DUT Positioning

DUT Positioning	
Positioning	The DUT Positioner was securely fastened to the Phantom Platform. Registration marks were placed on the DUT and the Positioner to ensure consistent positioning of the DUT for each test evaluation.
FACE Configuration	This device is not intended to be held to the face and was not tested in the FACE configuration.
BODY Configuration	The DUT was securely clamped into the device holder with the surface of the DUT normally in contact with the body in direct contact with the bottom of the phantom, or 0mm separation from the DUT's accessory to the phantom.
HEAD Configuration	This device is not intended to be held to the ear and was not tested in the HEAD configuration.

12.3 General Procedures and Report

General Procedures and Reporting	
General Procedures	<p>The fluid dielectric parameters of the Active Tissue Simulating Liquid (TSL) were measured as described in this Section, recorded and entered into the DASY Measurement Server. Active meaning the TSL used during the SAR evaluation of the DUT. The temperature of the Active TSL was measured and recorded prior to performing a System Performance Check (SPC). An SPC was performed with the Active TSL prior to the start of the test series. The temperature of the Active TSL was measured throughout the day and the Active TSL temperature was maintained to $\pm 0.5^{\circ}\text{C}$. The Active TSL temperature was maintained to within $\pm 1.0^{\circ}\text{C}$ throughout the test series. TSL analysis and SPC were repeated when the Active TSL use exceeded 84 hours.</p> <p>An Area Scan exceeding the length and width of the DUT projection was performed and the locations of all maximas within 2dB of the Peak SAR recorded. A Zoom Scan centered over the Peak SAR location(s) was performed and the 1g and 10g SAR values recorded. The resolutions of the Area Scan and Zoom Scan are described in the Scan Resolution table(s) in this Section. A Power Reference Measurement was taken at the phantom reference point immediately prior to the Area Scan. A Power Drift measurement was taken at the phantom reference point immediately following the Zoom Scan to determine the power drift. A Z-Scan from the <u>Maximum Distance to Phantom Surface</u> to the fluid surface was performed following the power drift measurement.</p>
Reporting	<p>The 1g SAR, 10g SAR and power drift measurements are recorded in the SAR Measurement Summary tables in the SAR Measurement Summary Section of this report. The SAR values shown in the 100% DC (Duty Cycle) column are the SAR values reported by the SAR Measurement Server with the DUT operating at 100% transmit duty cycle. These tables also include other information such as transmit channel and frequency, modulation, accessories tested and DUT-phantom separation distance.</p> <p>In the Scaling of Maximum Measured SAR Section of this report, the highest measured SAR in the BODY configuration, within the entire scope of this assessment, are, when applicable, scaled for Fluid Sensitivity, Manufacturer's Tune-Up Tolerance, Simultaneous Transmission and Drift. With the exception of Duty Cycle correction/compensation, SAR values are <u>ONLY</u> scaled up, not down. The final results of this scaling is the <u>reported SAR</u> which appears on the Cover Page of this report.</p>

12.4 Fluid Dielectric and Systems Performance Check

Fluid Dielectric and Systems Performance Check	
Fluid Dielectric Measurement Procedure	
<p>The fluid dielectric parameters of the Tissue Simulating Liquid (TSL) are measured using the Open-Ended Coax Method connected to an Agilent 8753ET Network Analyzer connected to a measurement server running Aprel Dielectric Property Measurement System. A frequency range of $\pm 100\text{MHz}$ for frequencies $> 300\text{MHz}$ and $\pm 50\text{MHz}$ for frequencies $\leq 300\text{MHz}$ with frequency step size of 10MHz is used. The center frequency is centered around the SAR measurement probe's calibration point for that TSL frequency range. A calibration of the setup is performed using a short-open-deionized water (at 23°C in a 300ml beaker) method. A sample of the TSL is placed in a 300ml beaker and the open-ended coax is submerged approximately 8mm below the fluid surface in the approximate center of the beaker. A check of the setup is made to ensure no air is trapped under the open-ended coax. The sample of TSL is measured and compared to the FCC OET Bulletin 65 Supplement C targets for HEAD or BODY for the entire fluid measurement range. Fluid adjustment are made if the dielectric parameters are $> 5\%$ in range that the DUT is to be tested. If the adjustments fail to bring the parameters to $\leq 5\%$ but are $< 10\%$, the SAR Fluid Sensitivity as per IEC 62201-1 and FCC KDB 865664 are applied to the highest measured SAR. A TSL with dielectric parameters $> 10\%$ in the DUT test frequency range are not used.</p>	
Systems Performance Check	
<p>The fluid dielectric parameters of the Active TSL are entered into the DASY Measurement Server at each of the 10MHz step size intervals. Active meaning the TSL used during the SAR evaluation of the DUT. The DASY Measurement System will automatically interpolate the dielectric parameters for DUT test frequencies that fall between the 10MHz step intervals.</p> <p>A Systems Performance Check (SPC) is performed in accordance with IEEE 1528 "System Check" and FCC KDB 865664 "System Verification". A validation source, dipole or Confined Loop Antenna (CLA), is placed under the geometric center of the phantom and separated from the phantom in accordance to the validation source's Calibration Certificate data. A CW signal set to the frequency of the validate source's and SAR measurement probe's calibration frequency with a forward power set to the validation source's Calibration Certificate data power setting is applied to the validation source. An Area Scan is centered over the projection of the validation source's feed point and an Area Scan is taken. A Zoom Scan centered over the Peak SAR measurement of the Area Scan and the 1g and 10g SAR is measured. The measured 1g and 10g SAR is compared to the 1g and 10g SAR measurements from the validation source's Calibration Certificate. When required, the measured SAR is normalized to 1.0W and compared to the normalized SAR indicated on the validation source's Calibration Certificate. The SPC is considered valid when the measured and normalized SAR is $\leq 10\%$ of the measured and normalize SAR of the validation source's Calibration Certificate.</p> <p>The fluid dielectric parameters of the Active TSL and SPC are repeated when the Active TSL has been in use for greater than 84 hours or if the Active TSL temperature has exceed $\pm 1^\circ\text{C}$ of the initial fluid analysis.</p>	

12.5 Scan Resolution 100MHz to 2GHz

Scan Resolution 100MHz to 2GHz	
Maximum distance from the closest measurement point to phantom surface: (Geometric Center of Probe Center)	$4 \pm 1 \text{ mm}$
Maximum probe angle normal to phantom surface. (Flat Section ELI Phantom)	$5^\circ \pm 1^\circ$
Area Scan Spatial Resolution $\Delta X, \Delta Y$	15 mm
Zoom Scan Spatial Resolution $\Delta X, \Delta Y$	7.5 mm
Zoom Scan Spatial Resolution ΔZ (Uniform Grid)	5 mm
Zoom Scan Volume X, Y, Z	30 mm
Phantom	ELI
Fluid Depth	$150 \pm 5 \text{ mm}$
An Area Scan with an area extending beyond the device was used to locate the candidate maximas within 2dB of the global maxima.	
A Zoom Scan centered over the peak SAR location(s) determined by the Area Scan was used to determine the 1-gram and 10-gram peak spatial-average SAR	

12.6 Scan Resolution 2GHz to 3GHz

Scan Resolution 2GHz to 3GHz	
Maximum distance from the closest measurement point to phantom surface: (Geometric Center of Probe Center)	4 ± 1 mm
Maximum probe angle normal to phantom surface. (Flat Section ELI Phantom)	5° ± 1°
Area Scan Spatial Resolution $\Delta X, \Delta Y$	12 mm
Zoom Scan Spatial Resolution $\Delta X, \Delta Y$	5 mm
Zoom Scan Spatial Resolution ΔZ (Uniform Grid)	5 mm
Zoom Scan Volume X, Y, Z	30 mm
Phantom	ELI
Fluid Depth	150 ± 5 mm
An Area Scan with an area extending beyond the device was used to locate the candidate maximas within 2dB of the global maxima.	
A Zoom Scan centered over the peak SAR location(s) determined by the Area Scan was used to determine the 1-gram and 10-gram peak spatial-average SAR	

12.7 Scan Resolution 5GHz to 6GHz

Scan Resolution 5GHz to 6GHz	
Maximum distance from the closest measurement point to phantom surface: (Geometric Center of Probe Center)	4 ± 1 mm
Maximum probe angle normal to phantom surface. (Flat Section ELI Phantom)	5° ± 1°
Area Scan Spatial Resolution $\Delta X, \Delta Y$	10 mm
Zoom Scan Spatial Resolution $\Delta X, \Delta Y$	4 mm
Zoom Scan Spatial Resolution ΔZ (Uniform Grid)	2 mm
Zoom Scan Volume X, Y, Z	22 mm
Phantom	ELI
Fluid Depth	100 ± 5 mm
An Area Scan with an area extending beyond the device was used to locate the candidate maximas within 2dB of the global maxima.	
A Zoom Scan centered over the peak SAR location(s) determined by the Area Scan was used to determine the 1-gram and 10-gram peak spatial-average SAR	

13.0 MEASUREMENT UNCERTAINTIES

Table 13.0 Measurement Uncertainty

UNCERTAINTY BUDGET FOR DEVICE EVALUATION (IEEE 1528-2013 Table 9)									
Uncertainty Component	IEEE 1528 Section	Uncertainty Value ±%	Probability Distribution	Divisor	ci 1g	ci 10g	Uncertainty Value ±% (1g)	Uncertainty Value ±% (10g)	V _i or V _{eff}
Measurement System									
Probe Calibration*	E.2.1	6.6	Normal	1	1	1	6.60	6.60	∞
Axial Isotropy*	E.2.2	4.7	Rectangular	1.732050808	0.7	0.7	1.9	1.9	∞
Hemispherical Isotropy*	E.2.2	9.6	Rectangular	1.732050808	0.7	0.7	3.9	3.9	∞
Boundary Effect*	E.2.3	8.3	Rectangular	1.732050808	1	1	4.8	4.8	∞
Linearity*	E.2.4	4.7	Rectangular	1.732050808	1	1	2.7	2.7	∞
System Detection Limits*	E.2.4	1.0	Rectangular	1.732050808	1	1	0.6	0.6	∞
Modulation Response	E.2.5	4.0	Rectangular	1.732050808	1	1	2.3	2.3	∞
Readout Electronics*	E.2.6	1.0	Normal	1	1	1	1.0	1.0	∞
Response Time*	E.2.7	0.8	Rectangular	1.732050808	1	1	0.5	0.5	∞
Integration Time*	E.2.8	1.4	Rectangular	1.732050808	1	1	0.8	0.8	∞
RF Ambient Conditions - Noise	E.6.1	0.0	Rectangular	1.732050808	1	1	0.0	0.0	∞
RF Ambient Conditions - Reflection	E.6.1	0.0	Rectangular	1.732050808	1	1	0.0	0.0	∞
Probe Positioner Mechanical Tolerance*	E.6.2	0.4	Rectangular	1.732050808	1	1	0.2	0.2	∞
Probe Positioning wrt Phantom Shell*	E.6.3	2.9	Rectangular	1.732050808	1	1	1.7	1.7	∞
Extrapolation, interpolation & integration algorithms for max. SAR evaluation*	E.5	3.9	Rectangular	1.732050808	1	1	2.3	2.3	∞
Test Sample Related									
Test Sample Positioning	E.4.2	0.3	Normal	1	1	1	0.3	0.3	5
Device Holder Uncertainty*	E.4.1	3.6	Normal	1	1	1	3.6	3.6	∞
SAR Drift Measurement**	E.2.9	0.0	Rectangular	1.732050808	1	1	0.0	0.0	∞
SAR Scaling***	E.6.5	2.0	Rectangular	1.732050808	1	1	1.2	1.2	∞
Phantom and Tissue Parameters									
Phantom Uncertainty*	E.3.1	4.0	Rectangular	1.732050808	1	1	2.3	2.3	∞
SAR Correction Uncertainty	E.3.2	1.2	Normal	1	1	0.84	1.2	1.0	∞
Liquid Conductivity (measurement)	E.3.3	6.8	Normal	1	0.78	0.71	5.3	4.8	10
Liquid Permittivity (measurement)	E.3.3	5.3	Normal	1	0.23	0.26	1.2	1.4	10
Liquid Conductivity (Temperature)	E.3.2	0.1	Rectangular	1.732050808	0.78	0.71	0.1	0.0	∞
Liquid Permittivity Temperature)	E.3.2	0.0	Rectangular	1.732050808	0.23	0.26	0.0	0.0	∞
Effective Degrees of Freedom⁽¹⁾								V_{eff} =	873.2
Combined Standard Uncertainty			RSS				12.59	12.40	
Expanded Uncertainty (95% Confidence Interval)			k=2				25.18	24.80	

Measurement Uncertainty Table in accordance with IEEE Standard 1528-2003

(1) The Effective Degrees of Freedom is > 30 therefore a coverage factor of k=2 represents an approximate confidence level of 95%.

* Provided by SPEAG

Table 13.1 Calculation of Degrees of Freedom

Calculation of the Degrees and Effective Degrees of Freedom	
$v_i = n - 1$	$v_{\text{eff}} = \frac{u_c^4}{m \sum_{i=1} \frac{c_i^4 u_i^4}{v_i}}$

14.0 FLUID DIELECTRIC PARAMETERS

Table 14.0 Fluid Dielectric Parameters 2450MHz BODY TSL

 Aprel Laboratory
 Test Result for UIM Dielectric Parameter
 Wed 13/Dec/2017 13:46:37
 Freq Frequency(GHz)
 FCC_eH FCC Bulletin 65 Supplement C (June 2001) Limits for Head Epsilon
 FCC_sH FCC Bulletin 65 Supplement C (June 2001) Limits for Head Sigma
 FCC_eB FCC Limits for Body Epsilon
 FCC_sB FCC Limits for Body Sigma
 Test_e Epsilon of UIM
 Test_s Sigma of UIM

Freq	FCC_eB	FCC_sB	Test_e	Test_s
2.3500	52.83	1.85	50.08	1.80
2.3600	52.82	1.86	49.64	1.84
2.3700	52.81	1.87	49.73	1.83
2.3800	52.79	1.88	49.72	1.85
2.3900	52.78	1.89	49.89	1.87
2.4000	52.77	1.90	49.98	1.87
2.4100	52.75	1.91	50.05	1.88
2.4200	52.74	1.92	50.02	1.92
2.4300	52.73	1.93	50.13	1.94
2.4400	52.71	1.94	49.84	1.94
2.4500	52.70	1.95	49.87	1.96
2.4600	52.69	1.96	49.87	1.97
2.4700	52.67	1.98	49.47	1.96
2.4800	52.66	1.99	49.54	1.96
2.4900	52.65	2.01	49.35	2.00
2.5000	52.64	2.02	49.49	2.02
2.5100	52.62	2.04	49.66	2.00
2.5200	52.61	2.05	49.55	2.06
2.5300	52.60	2.06	49.85	2.07
2.5400	52.59	2.08	49.57	2.12
2.5500	52.57	2.09	49.68	2.11

FLUID DIELECTRIC PARAMETERS							
Date:	13 Dec 2017	Fluid Temp:	23.2	Frequency:	2450MHz	Tissue:	Body
Freq (MHz)	Test_e	Test_s	Target_e	Target_s	Deviation Permittivity	Deviation Conductivity	
2350.0000		50.0800	1.8000	52.8300	1.85	-5.21%	-2.70%
2360.0000		49.6400	1.8400	52.8200	1.86	-6.02%	-1.08%
2370.0000		49.7300	1.8300	52.8100	1.87	-5.83%	-2.14%
2380.0000		49.7200	1.8500	52.7900	1.88	-5.82%	-1.60%
2390.0000		49.8900	1.8700	52.7800	1.89	-5.48%	-1.06%
2400.0000		49.9800	1.8700	52.7700	1.90	-5.29%	-1.58%
2404.0000	*	50.0080	1.8740	52.7620	1.90	-5.22%	-1.58%
2410.0000		50.0500	1.8800	52.7500	1.91	-5.12%	-1.57%
2412.0000	*	50.0440	1.8880	52.7480	1.91	-5.13%	-1.26%
2420.0000		50.0200	1.9200	52.7400	1.92	-5.16%	0.00%
2430.0000		50.1300	1.9400	52.7300	1.93	-4.93%	0.52%
2437.0000	*	49.9270	1.9400	52.7160	1.94	-5.29%	0.15%
2440.0000	*	49.8400	1.9400	52.7100	1.94	-5.44%	0.00%
2441.0000	*	49.8430	1.9420	52.7090	1.94	-5.44%	0.05%
2450.0000		49.8700	1.9600	52.7000	1.95	-5.37%	0.51%
2460.0000		49.8700	1.9700	52.6900	1.96	-5.35%	0.51%
2462.0000	*	49.7900	1.9680	52.6860	1.96	-5.50%	0.20%
2470.0000		49.4700	1.9600	52.6700	1.98	-6.08%	-1.01%
2472.0000	*	49.4840	1.9600	52.6680	1.98	-6.05%	-1.11%
2480.0000		49.5400	1.9600	52.6600	1.99	-5.92%	-1.51%
2490.0000		49.3500	2.0000	52.6500	2.01	-6.27%	-0.50%
2500.0000		49.4900	2.0200	52.6400	2.02	-5.98%	0.00%
2510.0000		49.6600	2.0000	52.6200	2.04	-5.63%	-1.96%
2520.0000		49.5500	2.0600	52.6100	2.05	-5.82%	0.49%
2530.0000		49.8500	2.0700	52.6000	2.06	-5.23%	0.49%
2540.0000		49.5700	2.1200	52.5900	2.08	-5.74%	1.92%
2550.0000		49.6800	2.1100	52.5700	2.09	-5.50%	0.96%

*Channel Frequency Tested

Table 14.1 Fluid Dielectric Parameters 2450MHz BODY TSL

```

*****
Aprel Laboratory
Test Result for UIM Dielectric Parameter
Tue 19/Dec/2017 11:30:36
Freq      Frequency(GHz)
FCC_eHFCC Bulletin 65 Supplement C ( June 2001) Limits for Head Epsilon
FCC_sHFCC Bulletin 65 Supplement C (June 2001) Limits for Head Sigma
FCC_eB FCC Limits for Body Epsilon
FCC_sB FCC Limits for Body Sigma
Test_e Epsilon of UIM
Test_s Sigma of UIM
*****

```

Freq	FCC_eB	FCC_sB	Test_e	Test_s
2.3500	52.83	1.85	51.18	1.83
2.3600	52.82	1.86	51.08	1.85
2.3700	52.81	1.87	50.98	1.86
2.3800	52.79	1.88	51.03	1.89
2.3900	52.78	1.89	50.96	1.92
2.4000	52.77	1.90	50.95	1.90
2.4100	52.75	1.91	50.87	1.90
2.4200	52.74	1.92	50.70	1.95
2.4300	52.73	1.93	50.93	2.00
2.4400	52.71	1.94	50.95	1.98
2.4500	52.70	1.95	50.80	1.98
2.4600	52.69	1.96	50.78	2.01
2.4700	52.67	1.98	50.77	2.01
2.4800	52.66	1.99	50.81	2.01
2.4900	52.65	2.01	50.52	2.03
2.5000	52.64	2.02	50.43	2.06
2.5100	52.62	2.04	50.59	2.07
2.5200	52.61	2.05	50.62	2.06
2.5300	52.60	2.06	50.32	2.12
2.5400	52.59	2.08	50.48	2.13
2.5500	52.57	2.09	50.38	2.15

FLUID DIELECTRIC PARAMETERS							
Date:	19 Dec 2017	Fluid Temp:	23.4	Frequency:	2450MHz	Tissue:	Body
Freq (MHz)	Test_e	Test_s	Target_e	Target_s	Deviation Permittivity	Deviation Conductivity	
2350.0000		51.1800	1.8300	52.8300	1.85	-3.12%	-1.08%
2360.0000		51.0800	1.8500	52.8200	1.86	-3.29%	-0.54%
2370.0000		50.9800	1.8600	52.8100	1.87	-3.47%	-0.53%
2380.0000		51.0300	1.8900	52.7900	1.88	-3.33%	0.53%
2390.0000		50.9600	1.9200	52.7800	1.89	-3.45%	1.59%
2400.0000		50.9500	1.9000	52.7700	1.90	-3.45%	0.00%
2404.0000	*	50.9180	1.9000	52.7620	1.90	-3.49%	-0.21%
2410.0000		50.8700	1.9000	52.7500	1.91	-3.56%	-0.52%
2412.0000	*	50.8360	1.9100	52.7480	1.91	-3.62%	-0.10%
2420.0000		50.7000	1.9500	52.7400	1.92	-3.87%	1.56%
2430.0000		50.9300	2.0000	52.7300	1.93	-3.41%	3.63%
2437.0000	*	50.9440	1.9860	52.7160	1.94	-3.36%	2.53%
2440.0000	*	50.9500	1.9800	52.7100	1.94	-3.34%	2.06%
2441.0000	*	50.9350	1.9800	52.7090	1.94	-3.37%	2.01%
2450.0000		50.8000	1.9800	52.7000	1.95	-3.61%	1.54%
2460.0000		50.7800	2.0100	52.6900	1.96	-3.62%	2.55%
2462.0000	*	50.7780	2.0100	52.6860	1.96	-3.62%	2.34%
2470.0000		50.7700	2.0100	52.6700	1.98	-3.61%	1.52%
2472.0000	*	50.7780	2.0100	52.6680	1.98	-3.59%	1.41%
2480.0000		50.8100	2.0100	52.6600	1.99	-3.51%	1.01%
2490.0000		50.5200	2.0300	52.6500	2.01	-4.05%	1.00%
2500.0000		50.4300	2.0600	52.6400	2.02	-4.20%	1.98%
2510.0000		50.5900	2.0700	52.6200	2.04	-3.86%	1.47%
2520.0000		50.6200	2.0600	52.6100	2.05	-3.78%	0.49%
2530.0000		50.3200	2.1200	52.6000	2.06	-4.33%	2.91%
2540.0000		50.4800	2.1300	52.5900	2.08	-4.01%	2.40%
2550.0000		50.3800	2.1500	52.5700	2.09	-4.17%	2.87%

*Channel Frequency Tested

15.0 SYSTEM VERIFICATION TEST RESULTS

Table 15.0 System Verification Results 2450MHz BODY TSL

System Verification Test Results					
Date		Frequency (MHz)	Validation Source		
			P/N		S/N
14 Dec 2017		2450	D2450V2		825
Fluid Type	Fluid Temp °C	Ambient Temp °C	Ambient Humidity (%)	Forward Power (mW)	Source Spacing (mm)
Body	22.4	27	36%	250	10
Fluid Parameters					
Permittivity			Conductivity		
Measured	Target	Deviation	Measured	Target	Deviation
49.87	52.70	-5.37%	1.96	1.95	0.51%
Measured SAR					
1 gram			10 gram		
Measured	Target	Deviation	Measured	Target	Deviation
12.4	13.00	-4.62%	5.63	6.05	-6.94%
Measured SAR Normalized to 1.0W					
1 gram			10 gram		
Normalized	Target	Deviation	Normalized	Target	Deviation
49.60	50.70	-2.17%	22.52	23.80	-5.38%
<p>Prior to the SAR evaluations, system checks were performed on the planar section of the phantom and a SPEAG validation dipole in accordance with the procedures described in IEEE 1528-2013, FCC KDB 846224 and IEC 62209-1.</p> <p>The dielectric parameters of the simulated tissue mixture were measured prior to the system performance check using a Dielectric Probe Kit and a Network Analyzer.</p> <p>The forward power was applied to the dipole and the system was verified to a tolerance of +10% from the system manufacturer's dipole calibration target SAR value.</p> <p>The forward power applied was same forward power applied by the calibration lab during the calibration of this validation source.</p>					




Table 15.1 System Verification Results 2450MHz BODY TSL

System Verification Test Results					
Date		Frequency (MHz)	Validation Source		
			P/N		S/N
19 Dec 2017		2450	D2450V2		825
Fluid Type	Fluid Temp °C	Ambient Temp °C	Ambient Humidity (%)	Forward Power (mW)	Source Spacing (mm)
Body	23.4	27	36%	250	10
Fluid Parameters					
Permittivity			Conductivity		
Measured	Target	Deviation	Measured	Target	Deviation
50.80	52.70	-3.61%	1.98	1.95	1.54%
Measured SAR					
1 gram			10 gram		
Measured	Target	Deviation	Measured	Target	Deviation
13.3	13.00	2.31%	6.13	6.05	1.32%
Measured SAR Normalized to 1.0W					
1 gram			10 gram		
Normalized	Target	Deviation	Normalized	Target	Deviation
53.20	50.70	4.93%	24.52	23.80	3.03%
<p>Prior to the SAR evaluations, system checks were performed on the planar section of the phantom and a SPEAG validation dipole in accordance with the procedures described in IEEE 1528-2013, FCC KDB 846224 and IEC 62209-1.</p> <p>The dielectric parameters of the simulated tissue mixture were measured prior to the system performance check using a Dielectric Probe Kit and a Network Analyzer.</p> <p>The forward power was applied to the dipole and the system was verified to a tolerance of +10% from the system manufacturer's dipole calibration target SAR value.</p> <p>The forward power applied was same forward power applied by the calibration lab during the calibration of this validation source.</p>					

16.0 MEASUREMENT SYSTEM SPECIFICATIONS

Table 16.0 Measurement System Specifications

Measurement System Specification	
Specifications	
Positioner	Stäubli Unimation Corp. Robot Model: TX90XL
Repeatability	+/- 0.035 mm
No. of axis	6.0
Data Acquisition Electronic (DAE) System	
Cell Controller	
Processor	Intel(R) Core(TM) i7-7700
Clock Speed	3.60 GHz
Operating System	Windows 10 Professional
Data Converter	
Features	Signal Amplifier, multiplexer, A/D converter, and control logic
Software	Measurement Software: DASY6, V 6.4.0.12171 / DASY52 V52.10.0.1446 Postprocessing Software: SEMCAD X, V14.6.10(Deployment Build)
Connecting Lines	Optical downlink for data and status info., Optical uplink for commands and clock
DASY Measurement Server	
Function	Real-time data evaluation for field measurements and surface detection
Hardware	Intel ULV Celeron CPU 400 MHz; 128 MB chip disk; 128 MB RAM
Connections	COM1, COM2, DAE, Robot, Ethernet, Service Interface
E-Field Probe	
Model	EX3DV4
Serial No.	3600
Construction	Triangular core fiber optic detection system
Frequency	10 MHz to 6 GHz
Linearity	±0.2 dB (30 MHz to 3 GHz)
Phantom	
Type	ELI Elliptical Planar Phantom
Shell Material	Fiberglass
Thickness	2mm +/- .2mm
Volume	> 30 Liter

Measurement System Specification	
Probe Specification	
Construction:	Symmetrical design with triangular core; Built-in shielding against static charges PEEK enclosure material (resistant to organic solvents, glycol)
Calibration:	In air from 10 MHz to 2.5 GHz In head simulating tissue at frequencies of 900 MHz and 1.8 GHz (accuracy $\pm 8\%$)
Frequency:	10 MHz to > 6 GHz; Linearity: ± 0.2 dB (30 MHz to 3 GHz)
Directivity:	± 0.2 dB in head tissue (rotation around probe axis) ± 0.4 dB in head tissue (rotation normal to probe axis)
Dynamic Range:	5 μ W/g to > 100 mW/g; Linearity: ± 0.2 dB
Surface Detect:	± 0.2 mm repeatability in air and clear liquids over diffuse reflecting surfaces
Dimensions:	Overall length: 330 mm; Tip length: 16 mm; Body diameter: 12 mm; Tip diameter: 6.8 mm Distance from probe tip to dipole centers: 2.7 mm
Application:	General dosimetry up to 3 GHz; Compliance tests of mobile phone
	
EX3DV4 E-Field Probe	
Phantom Specification	
The ELI V5.0 phantom is an elliptical planar fiberglass shell phantom with a shell thickness of 2.0mm +/- .2mm at the planar area. This phantom conforms to OET Bulletin 65, Supplement C, IEEE 1528-2013, IEC 62209-1 and IEC 62209-2.	
	
ELI Phantom	
Device Positioner Specification	
The DASY device positioner has two scales for device rotation (with respect to the body axis) and the device inclination (with respect to the line between the ear openings). The plane between the ear openings and the mouth tip has a rotation angle of 65°. The bottom plate contains three pair of bolts for locking the device holder. The device holder positions are adjusted to the standard measurement positions in the three sections.	
	
Device Positioner	

17.0 TEST EQUIPMENT LIST

Table 17.0 Equipment List and Calibration

Test Equipment List				
DESCRIPTION	ASSET NO.	SERIAL NO.	DATE CALIBRATED	CALIBRATION INTERVAL
Schmid & Partner DASY System	-	-	-	-
-DASY Measurement Server	294	1078	CNR	CNR
-Robot	-	599396-01	CNR	CNR
-DAE4	19	353	24-Apr-17	Annual
-EX3DV4 E-Field Probe	213	3600	27-Apr-17	Annual
-CLA150 Validation Source	251	4007	27-Apr-17	Triennial
-D835V2 Validation Dipole	217	4D075	23-Apr-15	Triennial
-D450V3 Validation Dipole	221	1068	21-Apr-15	Triennial
-D2450V2 Validation Dipole	219	825	23-Apr-15	Triennial
-D5GHzV2 Validation Dipole	126	1031	20-Apr-15	Triennial
ELI Phantom	247	-	CNR	CNR
HP 85070C Dielectric Probe Kit	33	none	CNR	CNR
Gigatronics 8652A Power Meter	110	1835801	29-Feb-16	Triennial
Gigatronics 80701A Power Sensor	248	1833687	29-Feb-16	Triennial
HP 8753ET Network Analyzer	134	US39170292	Extended	Triennial
Rohde & Schwarz SMR20 Signal Generator	6	100104	29-May-17	Triennial
Amplifier Research 5S1G4 Power Amplifier	106	26235	CNR	CNR

CNR = Calibration Not Required

18.0 FLUID COMPOSITION

Table 18.0 Fluid Composition 2450MHz BODY TSL

Tissue Simulating Liquid (TSL) Composition				
Component by Percent Weight				
Water	Glycol	Salt ⁽¹⁾	HEC ⁽²⁾	Bactericide ⁽³⁾
69.98	30.0	0.02	0.0	0.0

(1) Non-Iodinized

(2) HydroxyEthyl-Cellulose: Sigma-Aldrich P/N 54290-500g

(3) Dow Chemical Dowicil 75 Antimicrobial Perservative

APPENDIX A – SYSTEM VERIFICATION PLOTS

Date/Time: 12/14/2017 8:53:51 AM

Test Laboratory: Celltech Labs

SPC-2450B Dec 14 2017

DUT: Dipole 2450 MHz D2450V2; Type: D2450V2; Serial: D2450V2 - SN:825

Communication System: UID 0, CW (0); Communication System Band: FullSpan (0.0 - 6000.0 MHz); Frequency: 2450 MHz; Communication System PAR: 0 dB; PMF: 1

Medium: TSL_2450B[13DE17]
 Medium parameters used: $f = 2450$ MHz; $\sigma = 1.96$ S/m; $\epsilon_r = 49.87$; $\rho = 1000$ kg/m³
 Phantom section: Flat Section
 Measurement Standard: DASY5 (IEEE/IEC/ANSI C63.19-2011)

DASY Configuration:

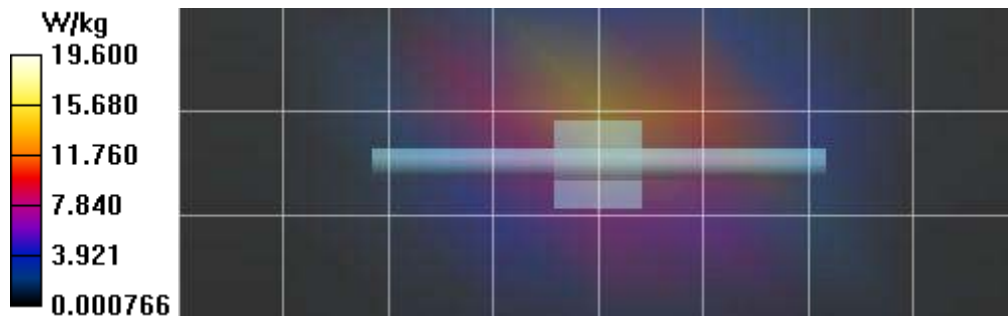
- Probe: EX3DV4 - SN3600; ConvF(6.56, 6.56, 6.56); Calibrated: 4/27/2017;
 - Modulation Compensation:
- Sensor-Surface: 4mm (Mechanical Surface Detection), $z = -1.5, 31.0, -99.0$
- Electronics: DAE4 Sn353; Calibrated: 4/24/2017
- Phantom: Twin-SAM V4.0 (30deg probe tilt); Type: QD 000 P40 CC;
- DASY52 52.10.0(1446);

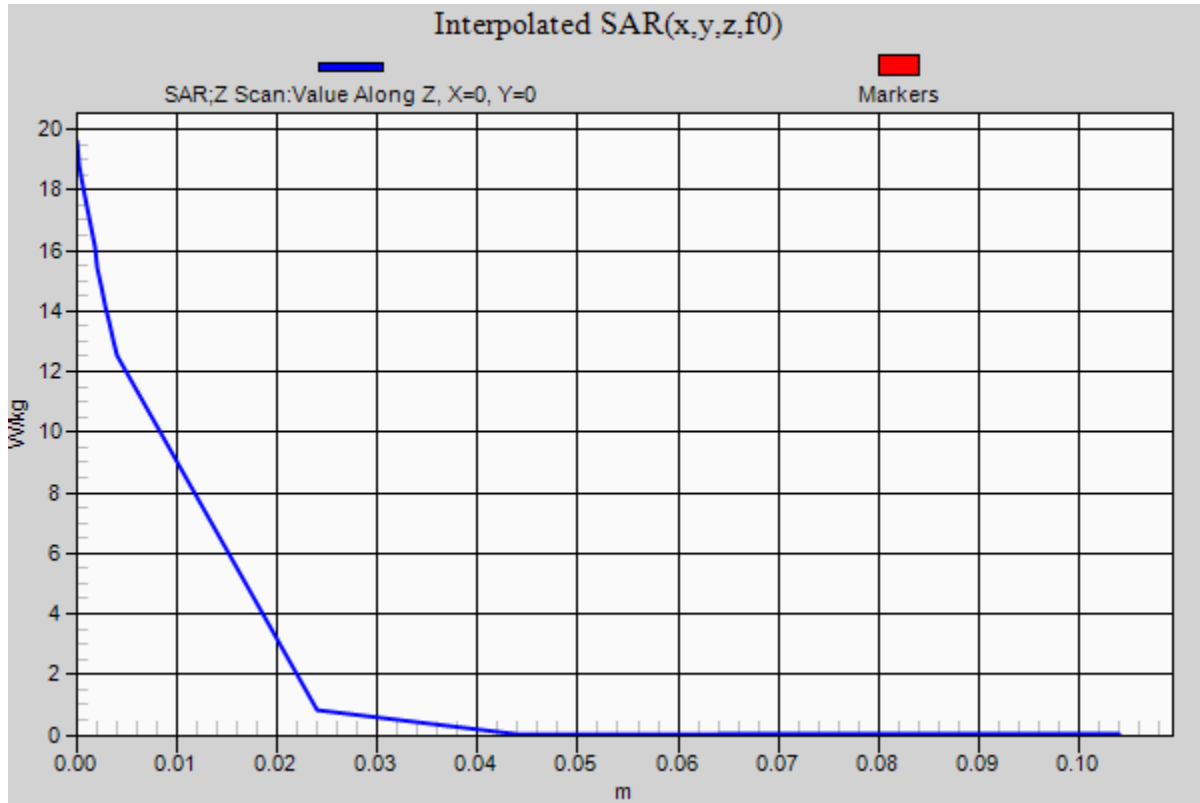
Frequency: 2450 MHz

SPC/SPC 2450B Input=250mw, Target=13.0W/kg 2/Area Scan (4x9x1): Measurement grid: dx=12mm, dy=12mm
 Maximum value of SAR (measured) = 13.4 W/kg

SPC/SPC 2450B Input=250mw, Target=13.0W/kg 2/Zoom Scan (7x7x7)/Cube 0: Measurement grid: dx=5mm, dy=5mm, dz=5mm
 Reference Value = 80.39 V/m; Power Drift = -0.00 dB
 Peak SAR (extrapolated) = 26.5 W/kg
SAR(1 g) = 12.4 W/kg; SAR(10 g) = 5.63 W/kg
 Maximum value of SAR (measured) = 14.1 W/kg

SPC/SPC 2450B Input=250mw, Target=13.0W/kg 2/Z Scan (1x1x17): Measurement grid: dx=20mm, dy=20mm, dz=20mm
 Penetration depth = n/a (n/a, 7.423) [mm]
 Maximum value of SAR (interpolated) = 19.6 W/kg





Date/Time: 12/19/2017 12:42:45 PM

Test Laboratory: Celltech Labs

SPC-2450B Dec 19 2017

DUT: Dipole 2450 MHz D2450V2; Type: D2450V2; Serial: D2450V2 - SN:825

Communication System: UID 0, CW (0); Communication System Band: FullSpan (0.0 - 6000.0 MHz); Frequency: 2450 MHz; Communication System PAR: 0 dB; PMF: 1

Medium: TSL_2450B[19DE17]

Medium parameters used: $f = 2450$ MHz; $\sigma = 1.98$ S/m; $\epsilon_r = 50.8$; $\rho = 1000$ kg/m³

Phantom section: Flat Section

Measurement Standard: DASY5 (IEEE/IEC/ANSI C63.19-2011)

DASY Configuration:

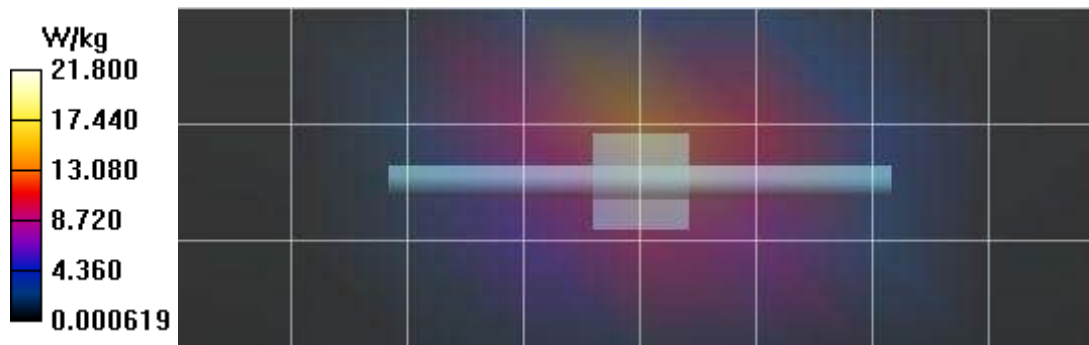
- Probe: EX3DV4 - SN3600; ConvF(6.56, 6.56, 6.56); Calibrated: 4/27/2017;
 - Modulation Compensation:
- Sensor-Surface: 4mm (Mechanical Surface Detection), $z = -1.5, 31.0, -99.0$
- Electronics: DAE4 Sn353; Calibrated: 4/24/2017
- Phantom: Twin-SAM V4.0 (30deg probe tilt); Type: QD 000 P40 CC;
- DASY52 52.10.0(1446);

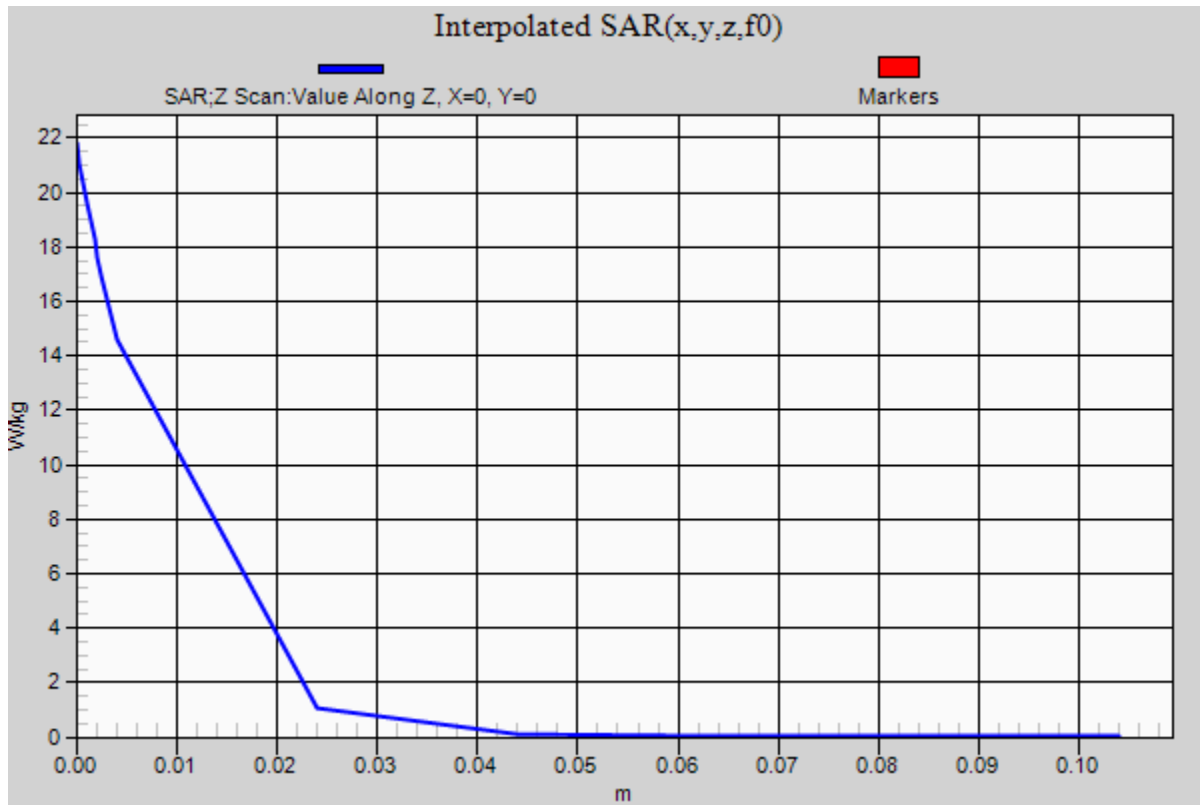
Frequency: 2450 MHz

SPC/SPC 2450B Input=250mw, Target=13.0W/kg 2/Area Scan (4x9x1): Measurement grid: dx=12mm, dy=12mm
Maximum value of SAR (measured) = 13.4 W/kg

SPC/SPC 2450B Input=250mw, Target=13.0W/kg 2/Zoom Scan (7x7x7)/Cube 0: Measurement grid: dx=5mm, dy=5mm, dz=5mm
Reference Value = 86.10 V/m; Power Drift = 0.02 dB
Peak SAR (extrapolated) = 27.8 W/kg
SAR(1 g) = 13.3 W/kg; SAR(10 g) = 6.13 W/kg
Maximum value of SAR (measured) = 15.1 W/kg

SPC/SPC 2450B Input=250mw, Target=13.0W/kg 2/Z Scan (1x1x17): Measurement grid: dx=20mm, dy=20mm, dz=20mm
Penetration depth = n/a (n/a, 7.634) [mm]
Maximum value of SAR (interpolated) = 21.8 W/kg





APPENDIX B – MEASUREMENT PLOTS OF MAXIMUM MEASURED SAR

Plot B1

Date/Time: 12/14/2017 11:50:23 AM

Test Laboratory: Celltech Labs

Garmin-2450B DEC 14 2017

DUT: Fenix 5/5s; Type: Sports Watch; Serial: Identical Prototype

Communication System: UID 0, CW(1) (0); Communication System Band: WIFI; Frequency: 2437 MHz; Communication System PAR: 0 dB; PMF: 1.12202e-005

Medium: TSL_2450B[13DE17]

Medium parameters used (interpolated): $f = 2437$ MHz; $\sigma = 1.94$ S/m; $\epsilon_r = 49.927$; $\rho = 1000$ kg/m³

Phantom section: Flat Section

Measurement Standard: DASYS (IEEE/IEC/ANSI C63.19-2011)

DASY Configuration:

- Probe: EX3DV4 - SN3600; ConvF(6.56, 6.56, 6.56); Calibrated: 4/27/2017;
 - Modulation Compensation:
- Sensor-Surface: 4mm (Mechanical Surface Detection (Locations From Previous Scan Used)), Sensor-Surface: 4mm (Mechanical Surface Detection), $z = -1.5, 31.0, 101.0$
- Electronics: DAE4 Sn353; Calibrated: 4/24/2017
- Phantom: Twin-SAM V4.0 (30deg probe tilt); Type: QD 000 P40 CC;
- DASYS2 52.10.0(1446);

Frequency: 2437 MHz

2450B/B1- A311900, Body, 2437 MHz, Metal Band-WIFI/Area Scan (8x7x1): Measurement grid: dx=12mm, dy=12mm

[Info: Interpolated medium parameters used for SAR evaluation.](#)

Maximum value of SAR (measured) = 0.922 W/kg

2450B/B1-A311900, Body, 2437 MHz, Metal Band-WIFI/Zoom Scan (7x7x7)/Cube 0: Measurement grid: dx=5mm, dy=5mm, dz=5mm

Reference Value = 25.82 V/m; Power Drift = -0.47 dB

Peak SAR (extrapolated) = 3.43 W/kg

SAR(1 g) = 0.896 W/kg; SAR(10 g) = 0.270 W/kg

[Info: Interpolated medium parameters used for SAR evaluation.](#)

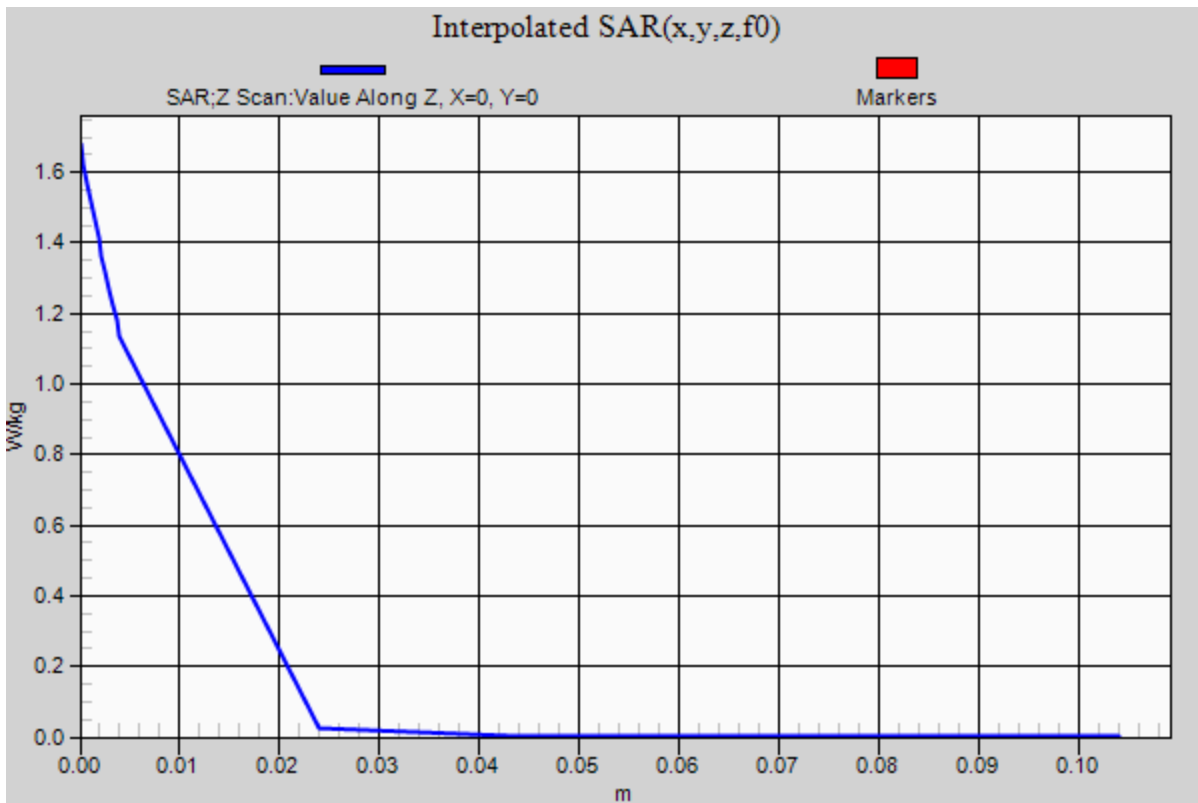
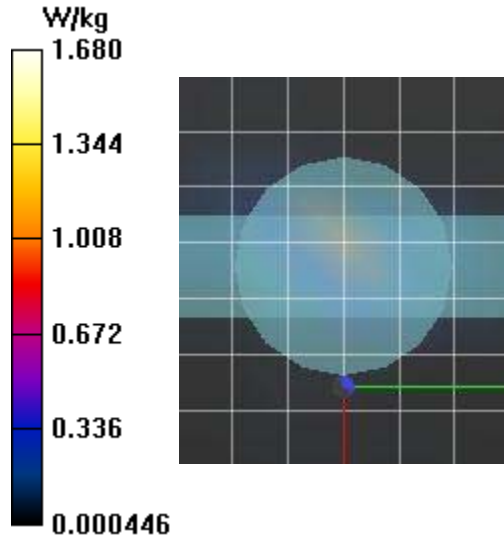
Maximum value of SAR (measured) = 1.17 W/kg

2450B/B1- A311900, Body, 2437 MHz, Metal Band-WIFI/Z Scan (1x1x17): Measurement grid: dx=20mm, dy=20mm, dz=20mm

[Info: Interpolated medium parameters used for SAR evaluation.](#)

Penetration depth = n/a (n/a, 5.288) [mm]

Maximum value of SAR (interpolated) = 1.68 W/kg



Plot B2

Date/Time: 12/14/2017 2:11:02 PM

Test Laboratory: Celltech Labs

Garmin-2450B DEC 14 2017

DUT: Fenix 5/5s; Type: Sports Watch; Serial: Identical Prototype

Communication System: UID 0, CW(1) (0); Communication System Band: WIFI; Frequency: 2437 MHz; Communication System PAR: 0 dB; PMF: 1.12202e-005

Medium: TSL_2450B[13DE17]

Medium parameters used (interpolated): $f = 2437$ MHz; $\sigma = 1.94$ S/m; $\epsilon_r = 49.927$; $\rho = 1000$ kg/m³

Phantom section: Flat Section

Measurement Standard: DASYS (IEEE/IEC/ANSI C63.19-2011)

DASY Configuration:

- Probe: EX3DV4 - SN3600; ConvF(6.56, 6.56, 6.56); Calibrated: 4/27/2017;
 - Modulation Compensation:
- Sensor-Surface: 4mm (Mechanical Surface Detection (Locations From Previous Scan Used)), Sensor-Surface: 4mm (Mechanical Surface Detection), $z = -1.5, 31.0$
- Electronics: DAE4 Sn353; Calibrated: 4/24/2017
- Phantom: Twin-SAM V4.0 (30deg probe tilt); Type: QD 000 P40 CC;
- DASYS52 52.10.0(1446);

Frequency: 2437 MHz

2450B/B2-A311900, Body, 2437 MHz, Silicone Band-WIFI/Area Scan (8x7x1): Measurement grid: $dx=12$ mm, $dy=12$ mm

[Info: Interpolated medium parameters used for SAR evaluation.](#)

Maximum value of SAR (measured) = 1.41 W/kg

2450B/B2-A311900, Body, 2437 MHz, Silicone Band-WIFI/Zoom Scan (7x7x7)/Cube 0: Measurement grid: $dx=5$ mm, $dy=5$ mm, $dz=5$ mm

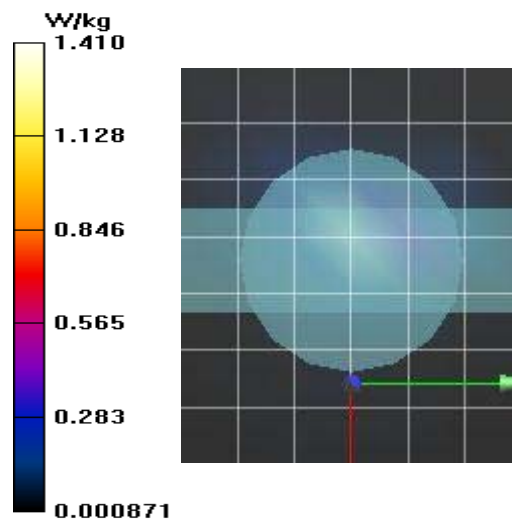
Reference Value = 14.36 V/m; Power Drift = -0.29 dB

Peak SAR (extrapolated) = 2.14 W/kg

SAR(1 g) = 0.808 W/kg; SAR(10 g) = 0.249 W/kg

[Info: Interpolated medium parameters used for SAR evaluation.](#)

Maximum value of SAR (measured) = 1.19 W/kg



Plot B3

Date/Time: 12/15/2017 8:32:32 AM

Test Laboratory: Celltech Labs

Garmin-2450B DEC 15 2017

DUT: Fenix 5/5s; Type: Sports Watch; Serial: Identical Prototype

Communication System: UID 10060 - CAB, IEEE 802.11b WiFi 2.4 GHz (DSSS, 5.5 Mbps); Communication System Band: WLAN 2.4GHz (2412.0 - 2484.0 MHz); Frequency: 2437 MHz; Communication System PAR: 2.83 dB; PMF: 1.16547

Medium: TSL_2450B[13DE17]

Medium parameters used (interpolated): $f = 2437$ MHz; $\sigma = 1.94$ S/m; $\epsilon_r = 49.927$; $\rho = 1000$ kg/m³

Phantom section: Flat Section

Measurement Standard: DASYS (IEEE/IEC/ANSI C63.19-2011)

DASY Configuration:

- Probe: EX3DV4 - SN3600; ConvF(6.56, 6.56, 6.56); Calibrated: 4/27/2017;
 - Modulation Compensation: PMR for UID 10060 - CAB, Calibrated: 4/27/2017
- Sensor-Surface: 4mm (Mechanical Surface Detection (Locations From Previous Scan Used)), Sensor-Surface: 4mm (Mechanical Surface Detection), $z = -1.5, 31.0$
- Electronics: DAE4 Sn353; Calibrated: 4/24/2017
- Phantom: Twin-SAM V4.0 (30deg probe tilt); Type: QD 000 P40 CC;
- DASYS2 52.10.0(1446);

Frequency: 2437 MHz

2450B/B3- A311900, Body, 2437MHz Metal Band-WIFI/Area Scan (8x7x1): Measurement grid: dx=12mm, dy=12mm

[Info: Interpolated medium parameters used for SAR evaluation.](#)

Maximum value of SAR (measured) = 0.106 W/kg

2450B/B3- A311900, Body, 2437MHz Metal Band-WIFI/Zoom Scan (7x7x7)/Cube 0: Measurement grid: dx=5mm, dy=5mm, dz=5mm

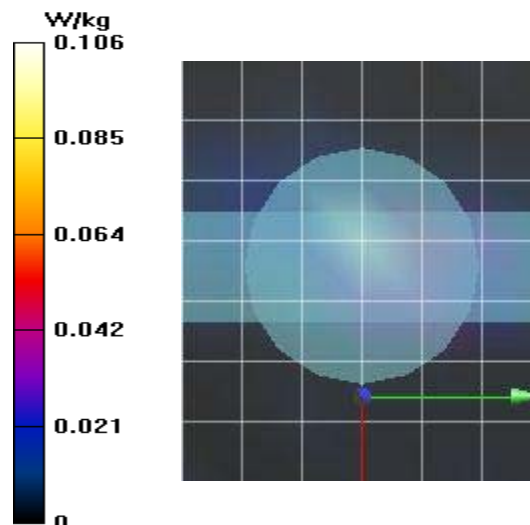
Reference Value = 7.891 V/m; Power Drift = -0.48 dB

Peak SAR (extrapolated) = 0.234 W/kg

SAR(1 g) = 0.086 W/kg; SAR(10 g) = 0.025 W/kg

[Info: Interpolated medium parameters used for SAR evaluation.](#)

Maximum value of SAR (measured) = 0.112 W/kg



Plot B4

Date/Time: 12/15/2017 10:43:22 AM

Test Laboratory: Celltech Labs

Garmin-2450B DEC 15 2017

DUT: Fenix 5/5s; Type: Sports Watch; Serial: Identical Prototype

Communication System: UID 10074 - CAB, IEEE 802.11g WiFi 2.4 GHz (DSSS/OFDM, 24 Mbps); Communication System Band: WLAN 2.4GHz (2412.0 - 2484.0 MHz); Frequency: 2437 MHz; Communication System PAR: 10.3 dB; PMF: 1.45881

Medium: TSL_2450B[13DE17]

Medium parameters used (interpolated): $f = 2437$ MHz; $\sigma = 1.94$ S/m; $\epsilon_r = 49.927$; $\rho = 1000$ kg/m³

Phantom section: Flat Section

Measurement Standard: DASYS (IEEE/IEC/ANSI C63.19-2011)

DASY Configuration:

- Probe: EX3DV4 - SN3600; ConvF(6.56, 6.56, 6.56); Calibrated: 4/27/2017;
 - Modulation Compensation: PMR for UID 10074 - CAB, Calibrated: 4/27/2017
- Sensor-Surface: 4mm (Mechanical Surface Detection), $z = -1.5, 31.0$
- Electronics: DAE4 Sn353; Calibrated: 4/24/2017
- Phantom: Twin-SAM V4.0 (30deg probe tilt); Type: QD 000 P40 CC;
- DASYS52 52.10.0(1446);

Frequency: 2437 MHz

2450B/B4- A311900, Body, 2437MHz Metal Band-WIFI/Area Scan (8x7x1): Measurement grid: dx=12mm, dy=12mm

[Info: Interpolated medium parameters used for SAR evaluation.](#)

Maximum value of SAR (measured) = 0.0502 W/kg

2450B/B4- A311900, Body, 2437MHz Metal Band-WIFI/Zoom Scan (7x7x7)/Cube 0: Measurement grid: dx=5mm, dy=5mm, dz=5mm

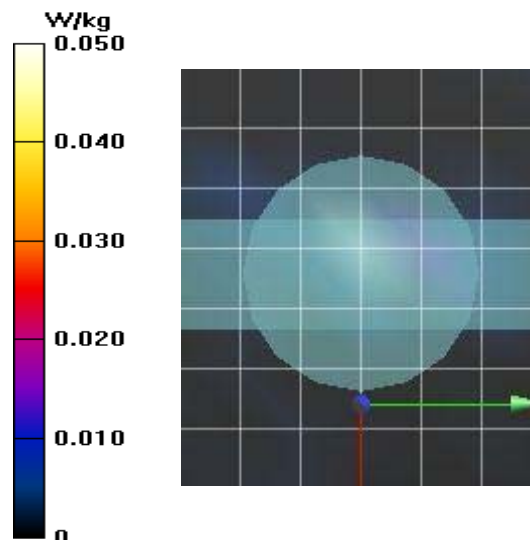
Reference Value = 3.492 V/m; Power Drift = -0.18 dB

Peak SAR (extrapolated) = 0.215 W/kg

SAR(1 g) = 0.032 W/kg; SAR(10 g) = 0.00549 W/kg

[Info: Interpolated medium parameters used for SAR evaluation.](#)

Maximum value of SAR (measured) = 0.0529 W/kg



Plot B5

Date/Time: 12/15/2017 12:39:40 PM

Test Laboratory: Celltech Labs

Garmin-2450B DEC 15-2 2017

DUT: Fenix 5/5s; Type: Sports Watch; Serial: Identical Prototype

Communication System: UID 10591 - AAA, IEEE 802.11n (HT Mixed, 20MHz, MCS0, 90pc duty cycle); Communication System Band: WLAN 2.4GHz (2412.0 - 2484.0 MHz); Frequency: 2437 MHz; Communication System PAR: 8.63 dB; PMF: 1.07152

Medium: TSL_2450B[13DE17]

Medium parameters used (interpolated): $f = 2437$ MHz; $\sigma = 1.94$ S/m; $\epsilon_r = 49.927$; $\rho = 1000$ kg/m³

Phantom section: Flat Section

Measurement Standard: DASYS (IEEE/IEC/ANSI C63.19-2011)

DASY Configuration:

- Probe: EX3DV4 - SN3600; ConvF(6.56, 6.56, 6.56); Calibrated: 4/27/2017;
 - Modulation Compensation: PMR for UID 10591 - AAA, Calibrated: 4/27/2017
- Sensor-Surface: 4mm (Mechanical Surface Detection (Locations From Previous Scan Used)), Sensor-Surface: 4mm (Mechanical Surface Detection), $z = -1.5, 31.0$
- Electronics: DAE4 Sn353; Calibrated: 4/24/2017
- Phantom: Twin-SAM V4.0 (30deg probe tilt); Type: QD 000 P40 CC;
- DASYS2 52.10.0(1446);

Frequency: 2437 MHz

2450B/B5- A311900, Body, 2437MHz Metal Band-WIFI/Area Scan (8x7x1): Measurement grid: dx=12mm, dy=12mm

[Info: Interpolated medium parameters used for SAR evaluation.](#)

Maximum value of SAR (measured) = 0.0584 W/kg

2450B/B5- A311900, Body, 2437MHz Metal Band-WIFI/Zoom Scan (7x7x7)/Cube 0: Measurement grid: dx=5mm, dy=5mm, dz=5mm

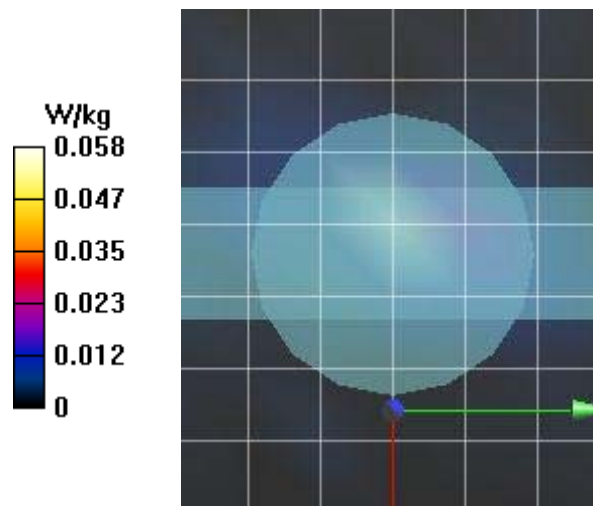
Reference Value = 4.201 V/m; Power Drift = -0.42 dB

Peak SAR (extrapolated) = 0.0930 W/kg

SAR(1 g) = 0.034 W/kg; SAR(10 g) = 0.00797 W/kg

[Info: Interpolated medium parameters used for SAR evaluation.](#)

Maximum value of SAR (measured) = 0.0464 W/kg



Plot B6

Date/Time: 12/15/2017 2:15:41 PM

Test Laboratory: Celltech Labs

Garmin-2450B DEC 15-2 2017

DUT: Fenix 5/5s; Type: Sports Watch; Serial: Identical Prototype

Communication System: UID 0, CW(1) (0); Communication System Band: WIFI; Frequency: 2412 MHz; Communication System PAR: 0 dB; PMF: 1.12202e-005

Medium: TSL_2450B[13DE17]

Medium parameters used (interpolated): $f = 2412$ MHz; $\sigma = 1.888$ S/m; $\epsilon_r = 50.044$; $\rho = 1000$ kg/m³

Phantom section: Flat Section

Measurement Standard: DASYS (IEEE/IEC/ANSI C63.19-2011)

DASY Configuration:

- Probe: EX3DV4 - SN3600; ConvF(6.56, 6.56, 6.56); Calibrated: 4/27/2017;
 - Modulation Compensation:
- Sensor-Surface: 4mm (Mechanical Surface Detection (Locations From Previous Scan Used)), Sensor-Surface: 4mm (Mechanical Surface Detection), $z = -1.5, 31.0, 101.0$
- Electronics: DAE4 Sn353; Calibrated: 4/24/2017
- Phantom: Twin-SAM V4.0 (30deg probe tilt); Type: QD 000 P40 CC;
- DASYS2 52.10.0(1446);

Frequency: 2412 MHz

2450B/B6- A311900, Body, 2412MHz Metal Band-WIFI/Area Scan (8x7x1): Measurement grid: dx=12mm, dy=12mm

[Info: Interpolated medium parameters used for SAR evaluation.](#)

Maximum value of SAR (measured) = 1.35 W/kg

2450B/B6- A311900, Body, 2412MHz Metal Band-WIFI/Zoom Scan (7x7x7)/Cube 0: Measurement grid: dx=5mm, dy=5mm, dz=5mm

Reference Value = 23.90 V/m; Power Drift = -0.37 dB

Peak SAR (extrapolated) = 4.22 W/kg

SAR(1 g) = 1.07 W/kg; SAR(10 g) = 0.328 W/kg

[Info: Interpolated medium parameters used for SAR evaluation.](#)

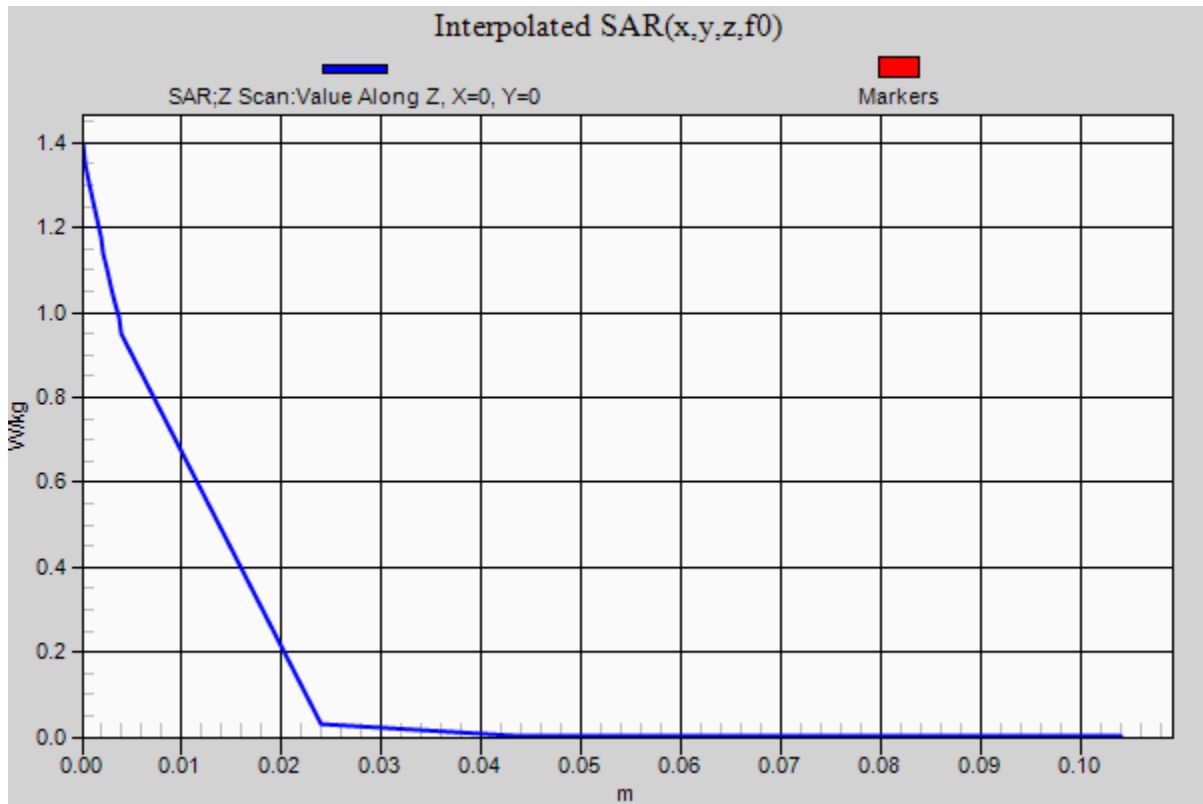
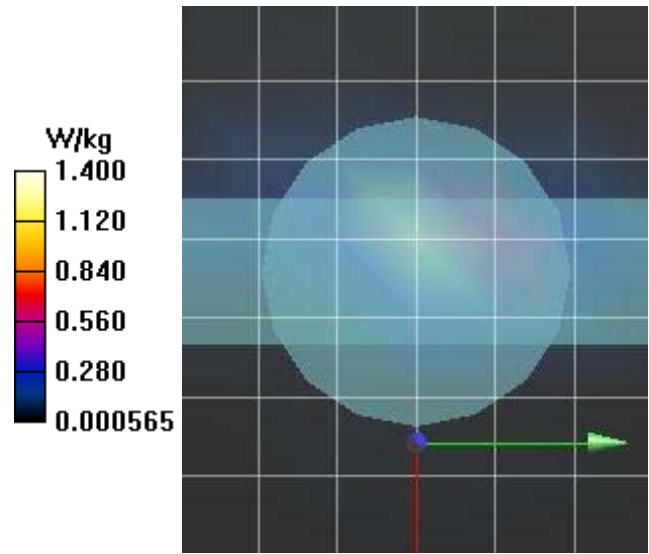
Maximum value of SAR (measured) = 1.30 W/kg

2450B/B6- A311900, Body, 2412MHz Metal Band-WIFI/Z Scan (1x1x17): Measurement grid: dx=20mm, dy=20mm, dz=20mm

[Info: Interpolated medium parameters used for SAR evaluation.](#)

Penetration depth = n/a (n/a, 5.697) [mm]

Maximum value of SAR (interpolated) = 1.40 W/kg



Plot B7

Date/Time: 12/15/2017 3:39:57 PM

Test Laboratory: Celltech Labs

Garmin-2450B DEC 15-2 2017

DUT: Fenix 5/5s; Type: Sports Watch; Serial: Identical Prototype

Communication System: UID 0, CW(1) (0); Communication System Band: WIFI; Frequency: 2462 MHz; Communication System PAR: 0 dB; PMF: 1.12202e-005

Medium: TSL_2450B[13DE17]

Medium parameters used (interpolated): $f = 2462$ MHz; $\sigma = 1.968$ S/m; $\epsilon_r = 49.79$; $\rho = 1000$ kg/m³

Phantom section: Flat Section

Measurement Standard: DASYS (IEEE/IEC/ANSI C63.19-2011)

DASY Configuration:

- Probe: EX3DV4 - SN3600; ConvF(6.56, 6.56, 6.56); Calibrated: 4/27/2017;
 - Modulation Compensation:
- Sensor-Surface: 4mm (Mechanical Surface Detection (Locations From Previous Scan Used)), Sensor-Surface: 4mm (Mechanical Surface Detection), $z = -1.5, 31.0$
- Electronics: DAE4 Sn353; Calibrated: 4/24/2017
- Phantom: Twin-SAM V4.0 (30deg probe tilt); Type: QD 000 P40 CC;
- DASYS2 52.10.0(1446);

Frequency: 2462 MHz

2450B/B7- A311900, Body, 2462MHz Metal Band-WIFI/Area Scan (8x7x1): Measurement grid: $dx=12$ mm, $dy=12$ mm

[Info: Interpolated medium parameters used for SAR evaluation.](#)

Maximum value of SAR (measured) = 0.712 W/kg

2450B/B7- A311900, Body, 2462MHz Metal Band-WIFI/Zoom Scan (7x7x7)/Cube 0: Measurement grid: $dx=5$ mm, $dy=5$ mm, $dz=5$ mm

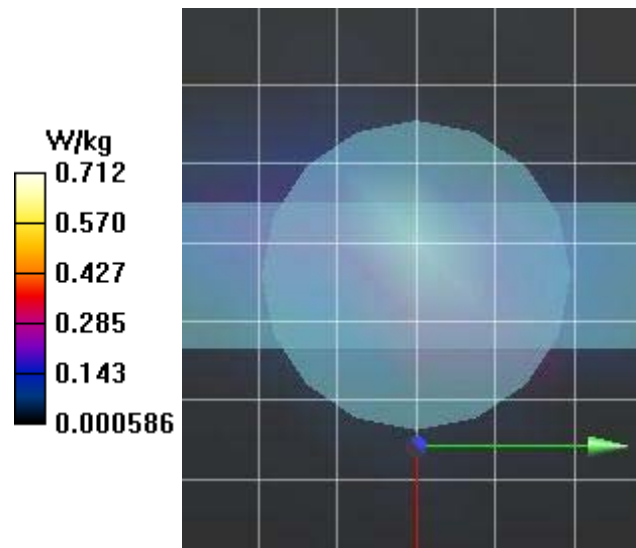
Reference Value = 23.05 V/m; Power Drift = -0.38 dB

Peak SAR (extrapolated) = 2.69 W/kg

SAR(1 g) = 0.745 W/kg; SAR(10 g) = 0.227 W/kg

[Info: Interpolated medium parameters used for SAR evaluation.](#)

Maximum value of SAR (measured) = 0.948 W/kg



Plot B8

Date/Time: 12/18/2017 9:03:11 AM

Test Laboratory: Celltech Labs

Garmin-2450B DEC 18 2017

DUT: Fenix 5/5s; Type: Sports Watch; Serial: Identical Prototype

Communication System: UID 0, CW(1) (0); Communication System Band: ANT; Frequency: 2441 MHz; Communication System PAR: 0 dB; PMF: 1.12202e-005

Medium: TSL_2450B[13DE17]

Medium parameters used (interpolated): $f = 2441$ MHz; $\sigma = 1.942$ S/m; $\epsilon_r = 49.843$; $\rho = 1000$ kg/m³

Phantom section: Flat Section

Measurement Standard: DASYS (IEEE/IEC/ANSI C63.19-2011)

DASY Configuration:

- Probe: EX3DV4 - SN3600; ConvF(6.56, 6.56, 6.56); Calibrated: 4/27/2017;
 - Modulation Compensation:
- Sensor-Surface: 4mm (Mechanical Surface Detection (Locations From Previous Scan Used)), Sensor-Surface: 4mm (Mechanical Surface Detection), $z = -1.5, 31.0$
- Electronics: DAE4 Sn353; Calibrated: 4/24/2017
- Phantom: Twin-SAM V4.0 (30deg probe tilt); Type: QD 000 P40 CC;
- DASYS52 52.10.0(1446);

Frequency: 2441 MHz

2450B/B8- A311900, Body, 2441MHz Metal Band-ANT/Area Scan (8x7x1): Measurement grid: $dx=12$ mm, $dy=12$ mm

[Info: Interpolated medium parameters used for SAR evaluation.](#)

Maximum value of SAR (measured) = 0.0289 W/kg

2450B/B8- A311900, Body, 2441MHz Metal Band-ANT/Zoom Scan (8x9x7)/Cube 0: Measurement grid: $dx=5$ mm, $dy=5$ mm, $dz=5$ mm

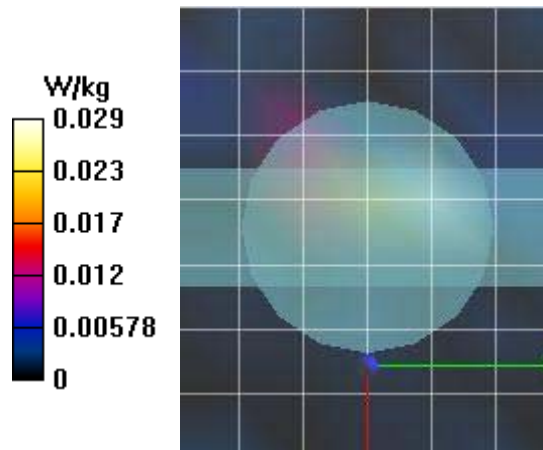
Reference Value = 1.573 V/m; Power Drift = -0.83 dB

Peak SAR (extrapolated) = 0.0700 W/kg

SAR(1 g) = 0.00946 W/kg; SAR(10 g) = 0.00116 W/kg

[Info: Interpolated medium parameters used for SAR evaluation.](#)

Maximum value of SAR (measured) = 0.0406 W/kg



Plot B9

Date/Time: 12/19/2017 1:41:40 PM

Test Laboratory: Celltech Labs

Garmin-2450B DEC 19 2017

DUT: Fenix 5/5s; Type: Sports Watch; Serial: Identical Prototype

Communication System: UID 0, CW(2) (0); Communication System Band: BT; Frequency: 2440 MHz; Communication System PAR: 0 dB; PMF: 1.12202e-005

Medium: TSL_2450B[19DE17]

Medium parameters used: $f = 2440$ MHz; $\sigma = 1.98$ S/m; $\epsilon_r = 50.95$; $\rho = 1000$ kg/m³

Phantom section: Flat Section

Measurement Standard: DASy5 (IEEE/IEC/ANSI C63.19-2011)

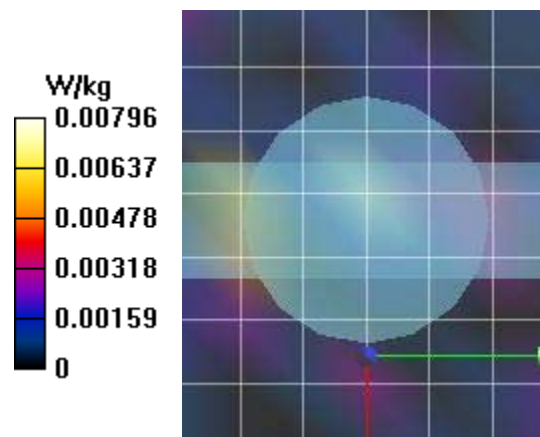
DASy Configuration:

- Probe: EX3DV4 - SN3600; ConvF(6.56, 6.56, 6.56); Calibrated: 4/27/2017;
 - Modulation Compensation:
- Sensor-Surface: 4mm (Mechanical Surface Detection (Locations From Previous Scan Used)), Sensor-Surface: 4mm (Mechanical Surface Detection), $z = -1.5, 31.0$
- Electronics: DAE4 Sn353; Calibrated: 4/24/2017
- Phantom: Twin-SAM V4.0 (30deg probe tilt); Type: QD 000 P40 CC;
- DASy52 52.10.0(1446);

Frequency: 2440 MHz

2450B/B9- A311900, Body, 2440MHz Metal Band-BT/Area Scan (8x7x1): Measurement grid: $dx=12$ mm, $dy=12$ mm
Maximum value of SAR (measured) = 0.00796 W/kg

2450B/B9- A311900, Body, 2440MHz Metal Band-BT/Zoom Scan (8x8x7)/Cube 0: Measurement grid: $dx=5$ mm, $dy=5$ mm, $dz=5$ mm
Reference Value = 1.092 V/m; Power Drift = 2.36 dB
Peak SAR (extrapolated) = 0.0330 W/kg
SAR(1 g) = 0.00448 W/kg; SAR(10 g) = 0.000504 W/kg
Maximum value of SAR (measured) = 0.00717 W/kg



Plot B7EU

Date/Time: 12/19/2017 2:23:43 PM

Test Laboratory: Celltech Labs

Garmin-2450H DEC 19 2017

DUT: Fenix 5/5s; Type: Sports Watch; Serial: Identical Prototype

Communication System: UID 0, CW(1) (0); Communication System Band: WIFI; Frequency: 2412 MHz; Communication System PAR: 0 dB; PMF: 1.12202e-005

Medium: TSL_2450H[18DE17]

Medium parameters used (interpolated): $f = 2412$ MHz; $\sigma = 1.88$ S/m; $\epsilon_r = 37.534$; $\rho = 1000$ kg/m³

Phantom section: Flat Section

Measurement Standard: DASYS (IEEE/IEC/ANSI C63.19-2011)

DASY Configuration:

- Probe: EX3DV4 - SN3600; ConvF(6.44, 6.44, 6.44); Calibrated: 4/27/2017;
 - Modulation Compensation:
- Sensor-Surface: 4mm (Mechanical Surface Detection (Locations From Previous Scan Used)), Sensor-Surface: 4mm (Mechanical Surface Detection), $z = -1.5, 31.0, 101.0$
- Electronics: DAE4 Sn353; Calibrated: 4/24/2017
- Phantom: ELI V5.0 (20deg probe tilt); Type: QD OVA 002 Ax;
- DASYS2 52.10.0(1446);

Frequency: 2412 MHz

2450H/B7EU- A311900, Touch 2, 2412MHz Metal Band-WIFI/Area Scan (8x7x1): Measurement grid: dx=12mm, dy=12mm

[Info: Interpolated medium parameters used for SAR evaluation.](#)

Maximum value of SAR (measured) = 1.43 W/kg

2450H/B7EU- A311900, Touch 2, 2412MHz Metal Band-WIFI/Zoom Scan (7x8x7)/Cube 0: Measurement grid: dx=5mm, dy=5mm, dz=5mm

Reference Value = 19.70 V/m; Power Drift = -0.48 dB

Peak SAR (extrapolated) = 3.39 W/kg

SAR(1 g) = 1.42 W/kg; SAR(10 g) = 0.632 W/kg

[Info: Interpolated medium parameters used for SAR evaluation.](#)

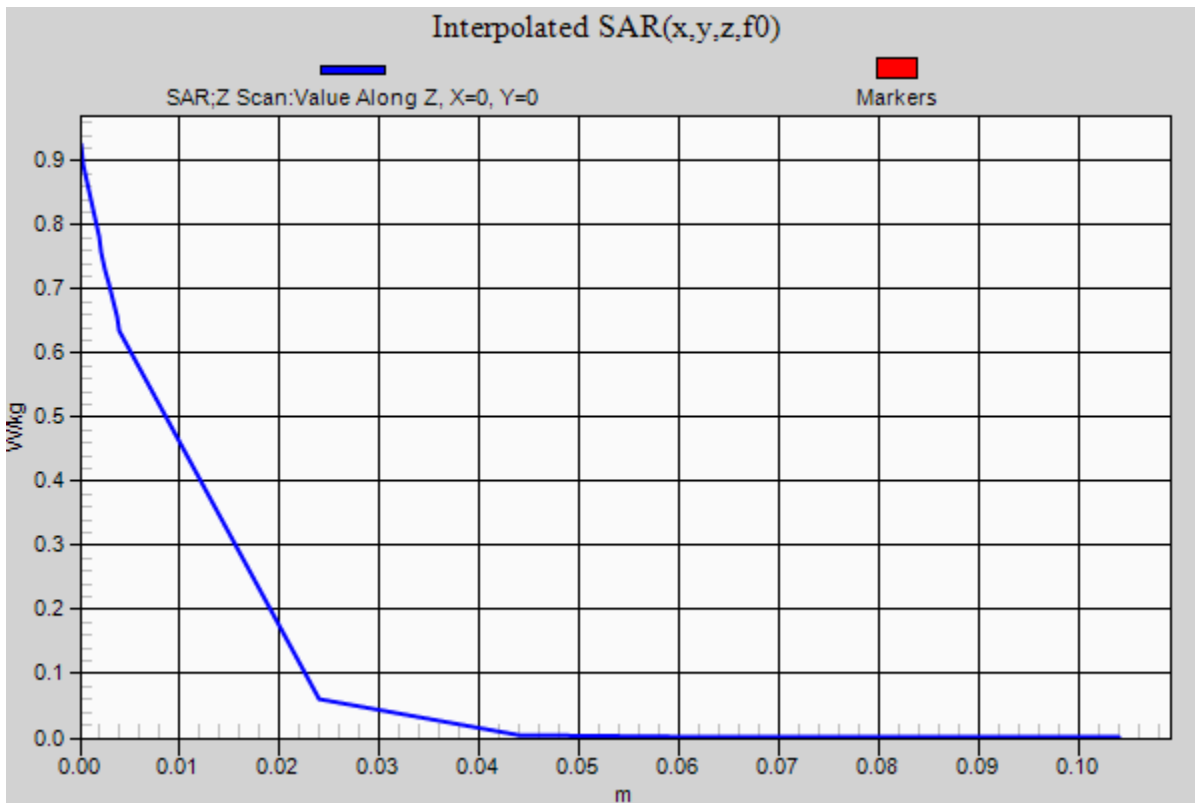
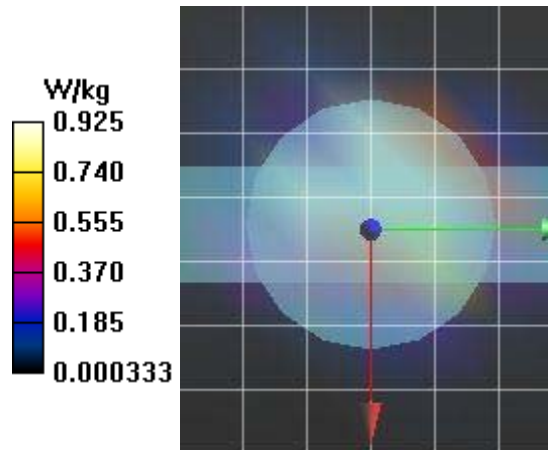
Maximum value of SAR (measured) = 1.63 W/kg

2450H/B7EU- A311900, Touch 2, 2412MHz Metal Band-WIFI/Z Scan (1x1x17): Measurement grid: dx=20mm, dy=20mm, dz=20mm

[Info: Interpolated medium parameters used for SAR evaluation.](#)

Penetration depth = n/a (n/a, 8.497) [mm]

Maximum value of SAR (interpolated) = 0.925 W/kg



Plot B8EU

Date/Time: 12/19/2017 3:47:34 PM

Test Laboratory: Celltech Labs

Garmin-2450H DEC 19 2017

DUT: Fenix 5/5s; Type: Sports Watch; Serial: Identical Prototype

Communication System: UID 0, CW(1) (0); Communication System Band: WIFI; Frequency: 2412 MHz; Communication System PAR: 0 dB; PMF: 1.12202e-005

Medium: TSL_2450H[18DE17]

Medium parameters used (interpolated): $f = 2412$ MHz; $\sigma = 1.88$ S/m; $\epsilon_r = 37.534$; $\rho = 1000$ kg/m³

Phantom section: Flat Section

Measurement Standard: DASYS (IEEE/IEC/ANSI C63.19-2011)

DASY Configuration:

- Probe: EX3DV4 - SN3600; ConvF(6.44, 6.44, 6.44); Calibrated: 4/27/2017;
 - Modulation Compensation:
- Sensor-Surface: 4mm (Mechanical Surface Detection (Locations From Previous Scan Used)), Sensor-Surface: 4mm (Mechanical Surface Detection), $z = -1.5, 31.0$
- Electronics: DAE4 Sn353; Calibrated: 4/24/2017
- Phantom: ELI V5.0 (20deg probe tilt); Type: QD OVA 002 Ax;
- DASYS2 52.10.0(1446);

Frequency: 2412 MHz

2450H/B8EU- A311900, Touch 3, 2412MHz Metal Band-WIFI/Area Scan (7x8x1): Measurement grid: $dx=12$ mm, $dy=12$ mm

[Info: Interpolated medium parameters used for SAR evaluation.](#)

Maximum value of SAR (measured) = 0.163 W/kg

2450H/B8EU- A311900, Touch 3, 2412MHz Metal Band-WIFI/Zoom Scan (7x8x7)/Cube 0: Measurement grid: $dx=5$ mm, $dy=5$ mm, $dz=5$ mm

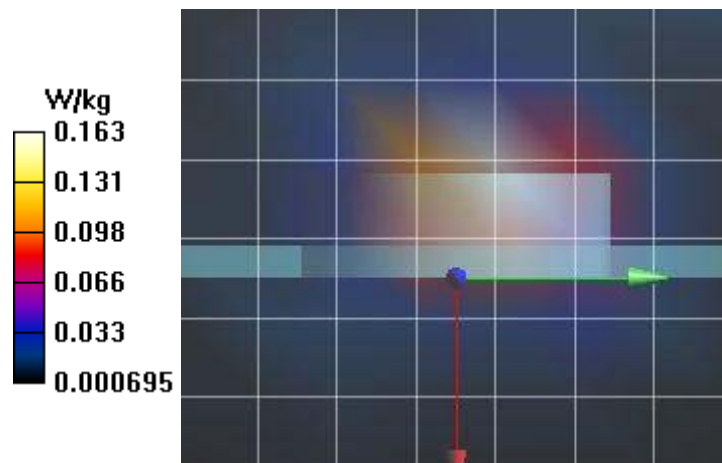
Reference Value = 4.071 V/m; Power Drift = -0.79 dB

Peak SAR (extrapolated) = 0.300 W/kg

SAR(1 g) = 0.139 W/kg; SAR(10 g) = 0.056 W/kg

[Info: Interpolated medium parameters used for SAR evaluation.](#)

Maximum value of SAR (measured) = 0.173 W/kg



Plot B9EU-2

Date/Time: 12/20/2017 5:02:28 PM

Test Laboratory: Celltech Labs

Garmin-2450H DEC 20 2017

DUT: Fenix 5/5s; Type: Sports Watch; Serial: Identical Prototype

Communication System: UID 0, CW(1) (0); Communication System Band: WIFI; Frequency: 2412 MHz; Communication System PAR: 0 dB; PMF: 1.12202e-005

Medium: TSL_2450H[18DE17]

Medium parameters used (interpolated): $f = 2412$ MHz; $\sigma = 1.88$ S/m; $\epsilon_r = 37.534$; $\rho = 1000$ kg/m³

Phantom section: Flat Section

Measurement Standard: DASYS (IEEE/IEC/ANSI C63.19-2011)

DASY Configuration:

- Probe: EX3DV4 - SN3600; ConvF(6.44, 6.44, 6.44); Calibrated: 4/27/2017;
 - Modulation Compensation:
- Sensor-Surface: 4mm (Mechanical Surface Detection (Locations From Previous Scan Used)), Sensor-Surface: 4mm (Mechanical Surface Detection), $z = -1.5, 31.0$
- Electronics: DAE4 Sn353; Calibrated: 4/24/2017
- Phantom: ELI V5.0 (20deg probe tilt); Type: QD OVA 002 Ax;
- DASYS2 52.10.0(1446);

Frequency: 2412 MHz

2450H/B9EU-2 A311900, Touch 4, 2412MHz Metal Band-WIFI 2/Area Scan (7x8x1): Measurement grid: $dx=12$ mm, $dy=12$ mm

[Info: Interpolated medium parameters used for SAR evaluation.](#)

Maximum value of SAR (measured) = 0.0649 W/kg

2450H/B9EU-2 A311900, Touch 4, 2412MHz Metal Band-WIFI 2/Zoom Scan (8x7x7)/Cube 0: Measurement grid: $dx=5$ mm, $dy=5$ mm, $dz=5$ mm

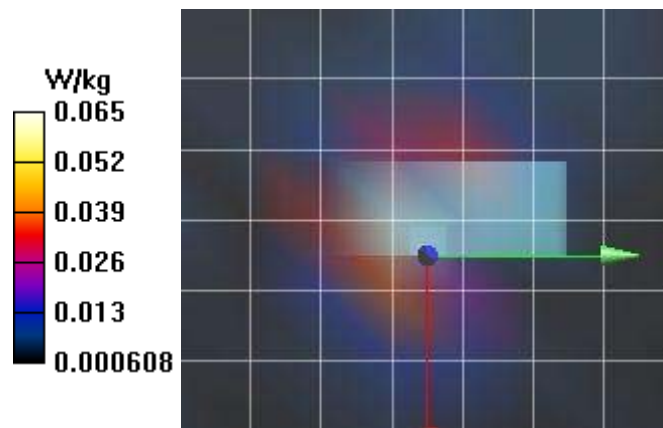
Reference Value = 4.076 V/m; Power Drift = -0.59 dB

Peak SAR (extrapolated) = 0.0950 W/kg

SAR(1 g) = 0.039 W/kg; SAR(10 g) = 0.013 W/kg

[Info: Interpolated medium parameters used for SAR evaluation.](#)

Maximum value of SAR (measured) = 0.0486 W/kg



Plot B10EU-2

Date/Time: 12/20/2017 6:39:46 PM

Test Laboratory: Celltech Labs

Garmin-2450H DEC 20 2017

DUT: Fenix 5/5s; Type: Sports Watch; Serial: Identical Prototype

Communication System: UID 0, CW(1) (0); Communication System Band: WIFI; Frequency: 2412 MHz; Communication System PAR: 0 dB; PMF: 1.12202e-005

Medium: TSL_2450H[18DE17]

Medium parameters used (interpolated): $f = 2412$ MHz; $\sigma = 1.88$ S/m; $\epsilon_r = 37.534$; $\rho = 1000$ kg/m³

Phantom section: Flat Section

Measurement Standard: DASYS (IEEE/IEC/ANSI C63.19-2011)

DASY Configuration:

- Probe: EX3DV4 - SN3600; ConvF(6.44, 6.44, 6.44); Calibrated: 4/27/2017;
 - Modulation Compensation:
- Sensor-Surface: 4mm (Mechanical Surface Detection (Locations From Previous Scan Used)), Sensor-Surface: 4mm (Mechanical Surface Detection), $z = -1.5, 31.0$
- Electronics: DAE4 Sn353; Calibrated: 4/24/2017
- Phantom: ELI V5.0 (20deg probe tilt); Type: QD OVA 002 Ax;
- DASYS2 52.10.0(1446);

Frequency: 2412 MHz

2450H/B10EU-2 A311900, Touch 5, 2412MHz Metal Band-WIFI 2/Area Scan (7x8x1): Measurement grid: dx=12mm, dy=12mm

[Info: Interpolated medium parameters used for SAR evaluation.](#)

Maximum value of SAR (measured) = 0.134 W/kg

2450H/B10EU-2 A311900, Touch 5, 2412MHz Metal Band-WIFI 2/Zoom Scan (9x8x7)/Cube 0: Measurement grid: dx=5mm, dy=5mm, dz=5mm

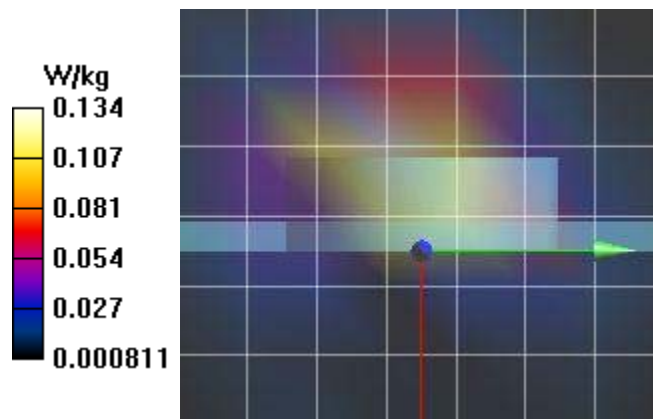
Reference Value = 5.752 V/m; Power Drift = -0.76 dB

Peak SAR (extrapolated) = 0.259 W/kg

SAR(1 g) = 0.099 W/kg; SAR(10 g) = 0.046 W/kg

[Info: Interpolated medium parameters used for SAR evaluation.](#)

Maximum value of SAR (measured) = 0.111 W/kg



Plot B11EU

Date/Time: 12/20/2017 2:57:26 PM

Test Laboratory: Celltech Labs

Garmin-2450H DEC 20 2017

DUT: Fenix 5/5s; Type: Sports Watch; Serial: Identical Prototype

Communication System: UID 0, CW(1) (0); Communication System Band: WIFI; Frequency: 2412 MHz; Communication System PAR: 0 dB; PMF: 1.12202e-005

Medium: TSL_2450H[18DE17]

Medium parameters used (interpolated): $f = 2412$ MHz; $\sigma = 1.88$ S/m; $\epsilon_r = 37.534$; $\rho = 1000$ kg/m³

Phantom section: Flat Section

Measurement Standard: DASYS (IEEE/IEC/ANSI C63.19-2011)

DASY Configuration:

- Probe: EX3DV4 - SN3600; ConvF(6.44, 6.44, 6.44); Calibrated: 4/27/2017;
 - Modulation Compensation:
- Sensor-Surface: 4mm (Mechanical Surface Detection (Locations From Previous Scan Used)), Sensor-Surface: 4mm (Mechanical Surface Detection), $z = -1.5, 31.0$
- Electronics: DAE4 Sn353; Calibrated: 4/24/2017
- Phantom: ELI V5.0 (20deg probe tilt); Type: QD OVA 002 Ax;
- DASYS2 52.10.0(1446);

Frequency: 2412 MHz

2450H/B11EU- A311900, Touch 6, 2412MHz Metal Band-WIFI/Area Scan (7x8x1): Measurement grid: dx=12mm, dy=12mm

[Info: Interpolated medium parameters used for SAR evaluation.](#)

Maximum value of SAR (measured) = 0.0662 W/kg

2450H/B11EU- A311900, Touch 6, 2412MHz Metal Band-WIFI/Zoom Scan (9x8x7)/Cube 0: Measurement grid: dx=5mm, dy=5mm, dz=5mm

Reference Value = 3.075 V/m; Power Drift = -0.45 dB

Peak SAR (extrapolated) = 0.251 W/kg

SAR(1 g) = 0.043 W/kg; SAR(10 g) = 0.017 W/kg

[Info: Interpolated medium parameters used for SAR evaluation.](#)

Maximum value of SAR (measured) = 0.0524 W/kg

