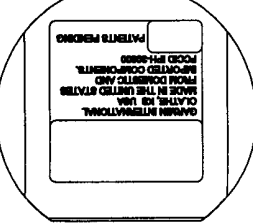
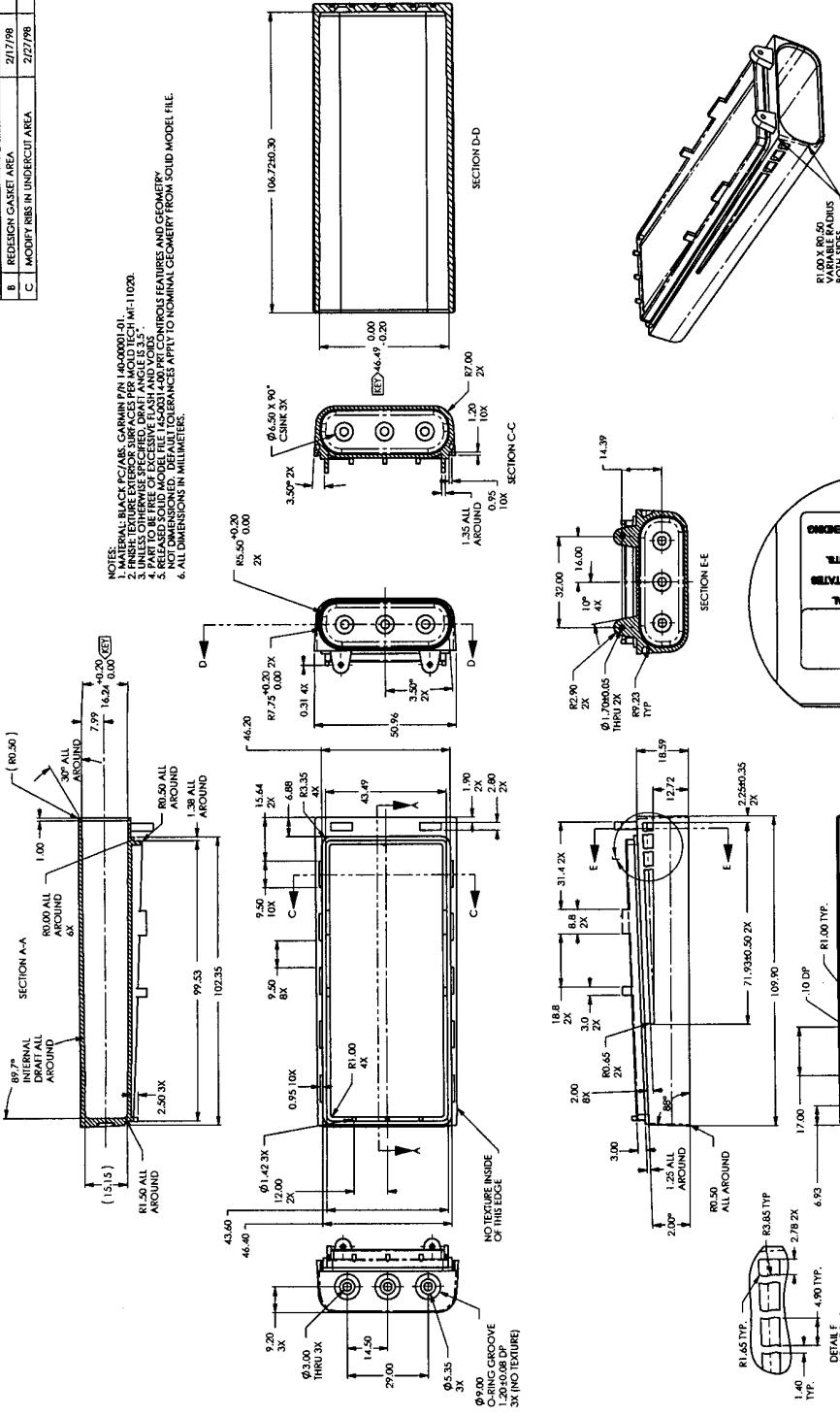


REVISIONS		DATE	ECO
REV	DESCRIPTION		
A	INITIAL RELEASE	1/16/98	
B	REDIGN GASKET AREA	2/17/98	8424
C	MODIFY RIBS IN UNDERCUT AREA	2/27/98	8485

- NOTES:
1. MATERIAL BLACK PC/ABS, GARMIN P/N 140-0001-01.
 2. FINISH TEXTURE EXTERIOR SURFACE OF THIS PART TO BE IDENTICAL TO THAT OF PART 140-0001-01.
 3. PART TO BE FREE OF EXCESSIVE FLASH AND Voids.
 4. ALL DIMENSIONS, UNLESS OTHERWISE SPECIFIED, ARE IN MILLIMETERS.
 5. ALL DIMENSIONS, UNLESS OTHERWISE SPECIFIED, APPLY TO NOMINAL GEOMETRY FROM SOLID MODEL FILE.
 6. ALL DIMENSIONS IN MILLIMETERS.



CONFIDENTIAL THIS DRAWING IS THE PROPERTY OF GARMIN CORPORATION. IT IS TO BE KEPT IN STRICTLY CONFIDENTIAL AND NOT BE DISCLOSED TO ANY OTHER PARTY WITHOUT THE WRITTEN PERMISSION OF GARMIN CORPORATION.	GARMIN Corporation 100 E. LISI STREET Oshkosh, WI 54901 USA
---	---

140001 LOC	DATE	
DESIGNER	CHKD	DATE
140001 LOC	JCB	1/15/98
TOLERANCE	CHKD	DATE
±0.10	MIR	1/15/98
±0.25		
±0.50		
±1.00		
±2.00		
±3.00		
±4.00		
±5.00		
±6.00		
±7.00		
±8.00		
±9.00		
±10.00		
±15.00		
±20.00		
±25.00		
±30.00		
±40.00		
±50.00		
±60.00		
±70.00		
±80.00		
±90.00		
±100.00		
±125.00		
±150.00		
±200.00		
±250.00		
±300.00		
±400.00		
±500.00		
±600.00		
±700.00		
±800.00		
±900.00		
±1000.00		

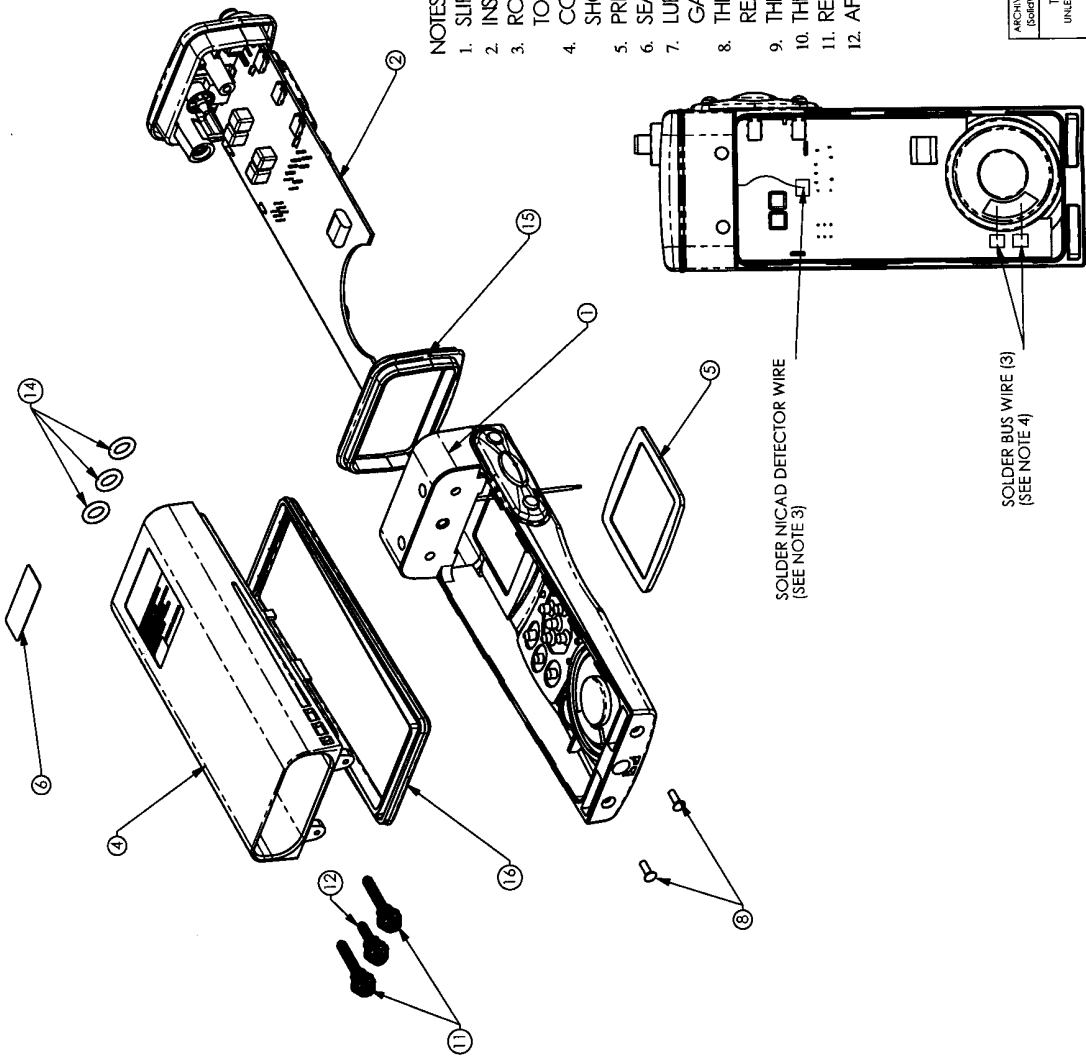
PMP, REAR CASE, VHF720	REV	C
	DATE	1/15/98
	SCALE	1:1
	DWG NO	145-00314-00
	PAGE	1
	TOTAL	1

DETAIL F
SCALE 2:1

DETAIL E
SCALE 2:1

DETAIL 8
SCALE 2:1

REVISIONS			
REV	DESCRIPTION	DATE	ECO
1	PREMINARY	4/23/98	—



NOTES:

1. SLIP UPPER GASKET (15) OVER CASTING (PART OF PCB ASSY. 2)
2. INSERT PCB ASSEMBLY INTO FRONT CASE (1).
3. ROUTE NICAID DETECTOR WIRE (18) UNDER THE WALL ON THE FRONT CASE AND SOLDER TO THE PCB ASSEMBLY AS SHOWN IN DETAIL A.
4. CONNECT SPEAKER TO PADS ON PCB BY SOLDERING 2 PIECES OF BUS WIRE (3) AS SHOWN IN DETAIL A.
5. PRESS 3 O-RINGS (14) INTO GROOVES IN REAR CASE (4).
6. SEAT GASKET (16) OVER LIP ON REAR CASE (4).
7. LUBRICATE GASKET USING GLYCERIN BASED LUBRICANT AND INSERT REAR CASE AND GASKET INTO FRONT CASE.
8. THREAD 2 LONG SPRING AND SCREW ASSEMBLIES (11) INTO OUTER 2 LOCATIONS IN REAR CASE.
9. THREAD SHORT SPRING AND SCREW ASSEMBLY INTO MIDDLE POSITION IN REAR CASE.
10. THREAD 2 SELF-THREADING SCREWS (8) INTO BOTTOM OF FRONT CASE.
11. REMOVE RELEASE LINER FROM LENS (5) AND FIRMLY SEAT INTO FRONT CASE.
12. AFFIX SERIAL NUMBER TAG (6) ONTO RECESS IN REAR CASE.

SOLDER NICAID DETECTOR WIRE
(SEE NOTE 3)

SOLDER BUS WIRE (3)
(SEE NOTE 4)

DETAIL A

CONFIDENTIAL This document contains classified technical information and its disclosure to unauthorized personnel is prohibited. This document is the property of Garmin Corporation and may not be reproduced, stored in a retrieval system, or transmitted in any form or by any means, electronic, mechanical, photocopying, recording, or by any information storage and retrieval system, without the written permission of Garmin Corporation.		GARMIN Corporation 1200 E. 151st St. Olathe, Kansas 66062 USA	
TITLE			
ASSY DWG., RADIO UNIT, VHF 720			
ARCHIVE FILE: (Sdwkwrkz/TP)	01500413.001	DATE	4/23/98
DRAWN		JCB	
TOLERANCE UNLESS OTHERWISE NOTED		CHKD.	
INCH	010 ±.25	FRS	
MM	.004 ±.08	APPRD.	
HOLES	.003 ±.08	PROJ. MGR.	
ANGLES	2°		
REV.	1	DWG. NO.	015-00413-00
		SCALE	1:1