



GARMIN DRIVESMART™



GARMIN®

support.garmin.com

© 2018 Garmin Ltd. or its subsidiaries

Garmin® and the Garmin logo are trademarks of Garmin Ltd. or its subsidiaries, registered in the USA and other countries. Garmin DriveSmart™ is a trademark of Garmin Ltd. or its subsidiaries. These trademarks may not be used without the express permission of Garmin.

The microSD™ logo is a trademark of SD-3C, LLC.



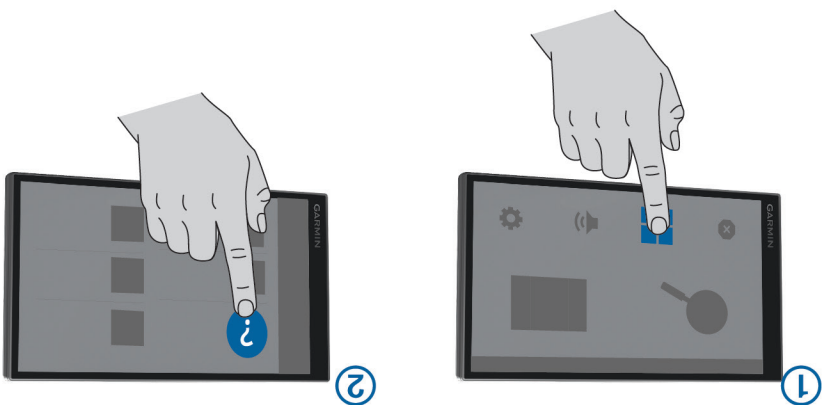
TRA
REGISTERED No:
ER66662/18
DEALER No:
0015955/08



Printed in Taiwan
November 2018
I90-02473-02_0A



garmin.com/manuals/drivesmart65

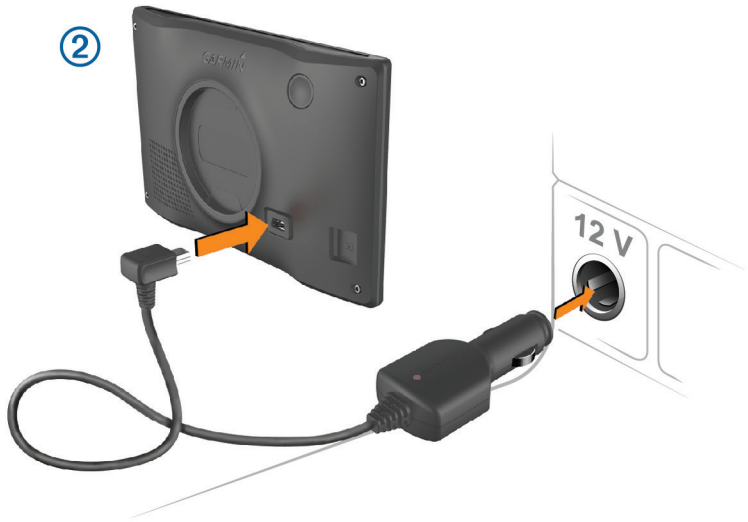
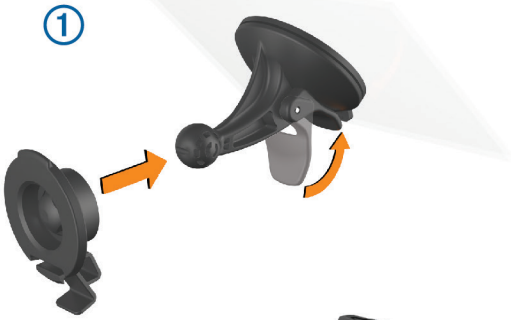


Manuais and Regulatory Information • Manuels et informations réglementaires
Manuali e note legali • Handbücher und aussichtsrechtliche Informationen
Manuales e información sobre las normativas vigentes • Manuais e informações regulamentares





Set Up • Configuration • Configurazione • Einrichtung • Configurar • Configurar



Live Services • Services Live • Servizi Live • Live-Dienste • Servicios en directo • Serviços Live

① garmin.com/driveapp

