

APPENDIX D – PROBE CALIBRATION



Accredited by the Swiss Accreditation Service (SAS)
The Swiss Accreditation Service is one of the signatories to the EA
Multilateral Agreement for the recognition of calibration certificates

Accreditation No.: **SCS 0108**

Client **Celltech**

Certificate No: **EX3-3600_Apr22**

CALIBRATION CERTIFICATE

Object **EX3DV4 - SN:3600**

Calibration procedure(s) **QA CAL-01.v9, QA CAL-12.v9, QA CAL-14.v6, QA CAL-23.v5,
QA CAL-25.v7
Calibration procedure for dosimetric E-field probes**

Calibration date: **April 20, 2022**

This calibration certificate documents the traceability to national standards, which realize the physical units of measurements (SI).
The measurements and the uncertainties with confidence probability are given on the following pages and are part of the certificate.

All calibrations have been conducted in the closed laboratory facility: environment temperature (22 ± 3)°C and humidity < 70%.

Calibration Equipment used (M&TE critical for calibration)

Primary Standards	ID	Cal Date (Certificate No.)	Scheduled Calibration
Power meter NRP	SN: 104778	04-Apr-22 (No. 217-03525/03524)	Apr-23
Power sensor NRP-Z91	SN: 103244	04-Apr-22 (No. 217-03524)	Apr-23
Power sensor NRP-Z91	SN: 103245	04-Apr-22 (No. 217-03525)	Apr-23
Reference 20 dB Attenuator	SN: CC2552 (20x)	04-Apr-22 (No. 217-03527)	Apr-23
DAE4	SN: 660	13-Oct-21 (No. DAE4-660_Oct21)	Oct-22
Reference Probe ES3DV2	SN: 3013	27-Dec-21 (No. ES3-3013_Dec21)	Dec-22
Secondary Standards	ID	Check Date (in house)	Scheduled Check
Power meter E4419B	SN: GB41293874	06-Apr-16 (in house check Jun-20)	In house check: Jun-22
Power sensor E4412A	SN: MY41498087	06-Apr-16 (in house check Jun-20)	In house check: Jun-22
Power sensor E4412A	SN: 000110210	06-Apr-16 (in house check Jun-20)	In house check: Jun-22
RF generator HP 8648C	SN: US3642U01700	04-Aug-99 (in house check Jun-20)	In house check: Jun-22
Network Analyzer E8358A	SN: US41080477	31-Mar-14 (in house check Oct-20)	In house check: Oct-22

	Name	Function	Signature
Calibrated by:	Leif Klysner	Laboratory Technician	
Approved by:	Sven Kühn	Deputy Manager	
			Issued: April 20, 2022
This calibration certificate shall not be reproduced except in full without written approval of the laboratory.			



Accredited by the Swiss Accreditation Service (SAS)

Accreditation No.: **SCS 0108**

The Swiss Accreditation Service is one of the signatories to the EA
Multilateral Agreement for the recognition of calibration certificates

Glossary:

TSL	tissue simulating liquid
NORM _{x,y,z}	sensitivity in free space
ConvF	sensitivity in TSL / NORM _{x,y,z}
DCP	diode compression point
CF	crest factor (1/duty_cycle) of the RF signal
A, B, C, D	modulation dependent linearization parameters
Polarization φ	φ rotation around probe axis
Polarization ϑ	ϑ rotation around an axis that is in the plane normal to probe axis (at measurement center), i.e., $\vartheta = 0$ is normal to probe axis
Connector Angle	information used in DASY system to align probe sensor X to the robot coordinate system

Calibration is Performed According to the Following Standards:

- IEC/IEEE 62209-1528, "Measurement Procedure For The Assessment Of Specific Absorption Rate Of Human Exposure To Radio Frequency Fields From Hand-Held And Body-Worn Wireless Communication Devices - Part 1528: Human Models, Instrumentation And Procedures (Frequency Range of 4 MHz to 10 GHz)", October 2020.
- KDB 865664, "SAR Measurement Requirements for 100 MHz to 6 GHz"

Methods Applied and Interpretation of Parameters:

- NORM_{x,y,z}**: Assessed for E-field polarization $\vartheta = 0$ ($f \leq 900$ MHz in TEM-cell; $f > 1800$ MHz: R22 waveguide). NORM_{x,y,z} are only intermediate values, i.e., the uncertainties of NORM_{x,y,z} does not affect the E²-field uncertainty inside TSL (see below *ConvF*).
- NORM(f)_{x,y,z}** = NORM_{x,y,z} * *frequency_response* (see Frequency Response Chart). This linearization is implemented in DASY4 software versions later than 4.2. The uncertainty of the frequency response is included in the stated uncertainty of *ConvF*.
- DCP_{x,y,z}**: DCP are numerical linearization parameters assessed based on the data of power sweep with CW signal (no uncertainty required). DCP does not depend on frequency nor media.
- PAR**: PAR is the Peak to Average Ratio that is not calibrated but determined based on the signal characteristics
- A_{x,y,z}; B_{x,y,z}; C_{x,y,z}; D_{x,y,z}; VR_{x,y,z}**: A, B, C, D are numerical linearization parameters assessed based on the data of power sweep for specific modulation signal. The parameters do not depend on frequency nor media. VR is the maximum calibration range expressed in RMS voltage across the diode.
- ConvF and Boundary Effect Parameters**: Assessed in flat phantom using E-field (or Temperature Transfer Standard for $f \leq 800$ MHz) and inside waveguide using analytical field distributions based on power measurements for $f > 800$ MHz. The same setups are used for assessment of the parameters applied for boundary compensation (alpha, depth) of which typical uncertainty values are given. These parameters are used in DASY4 software to improve probe accuracy close to the boundary. The sensitivity in TSL corresponds to NORM_{x,y,z} * *ConvF* whereby the uncertainty corresponds to that given for *ConvF*. A frequency dependent *ConvF* is used in DASY version 4.4 and higher which allows extending the validity from ± 50 MHz to ± 100 MHz.
- Spherical isotropy (3D deviation from isotropy)**: in a field of low gradients realized using a flat phantom exposed by a patch antenna.
- Sensor Offset**: The sensor offset corresponds to the offset of virtual measurement center from the probe tip (on probe axis). No tolerance required.
- Connector Angle**: The angle is assessed using the information gained by determining the NORM_x (no uncertainty required).

DASY/EASY - Parameters of Probe: EX3DV4 - SN:3600

Basic Calibration Parameters

	Sensor X	Sensor Y	Sensor Z	Unc (k=2)
Norm ($\mu\text{V}/(\text{V}/\text{m})^2$) ^A	0.48	0.48	0.38	$\pm 10.1 \%$
DCP (mV) ^B	101.6	98.8	101.6	

Calibration Results for Modulation Response

UID	Communication System Name		A dB	B dB $\sqrt{\mu\text{V}}$	C	D dB	VR mV	Max dev.	Unc ^E (k=2)
0	CW	X	0.0	0.0	1.0	0.00	147.6	$\pm 2.5 \%$	$\pm 4.7 \%$
		Y	0.0	0.0	1.0		140.0		
		Z	0.0	0.0	1.0		146.8		

The reported uncertainty of measurement is stated as the standard uncertainty of measurement multiplied by the coverage factor $k=2$, which for a normal distribution corresponds to a coverage probability of approximately 95%.

^A The uncertainties of Norm X,Y,Z do not affect the E²-field uncertainty inside TSL (see Pages 5 and 6).

^B Numerical linearization parameter: uncertainty not required.

^E Uncertainty is determined using the max. deviation from linear response applying rectangular distribution and is expressed for the square of the field value.

DASY/EASY - Parameters of Probe: EX3DV4 - SN:3600

Other Probe Parameters

Sensor Arrangement	Triangular
Connector Angle (°)	-124
Mechanical Surface Detection Mode	enabled
Optical Surface Detection Mode	disabled
Probe Overall Length	337 mm
Probe Body Diameter	10 mm
Tip Length	9 mm
Tip Diameter	2.5 mm
Probe Tip to Sensor X Calibration Point	1 mm
Probe Tip to Sensor Y Calibration Point	1 mm
Probe Tip to Sensor Z Calibration Point	1 mm
Recommended Measurement Distance from Surface	1.4 mm

Note: Measurement distance from surface can be increased to 3-4 mm for an *Area Scan* job.

DASY/EASY - Parameters of Probe: EX3DV4 - SN:3600

Calibration Parameter Determined in Head Tissue Simulating Media

f (MHz) ^C	Relative Permittivity ^F	Conductivity (S/m) ^F	ConvF X	ConvF Y	ConvF Z	Alpha ^G	Depth ^G (mm)	Unc (k=2)
30	55.0	0.75	12.25	12.25	12.25	0.00	1.00	± 13.3 %
150	52.3	0.76	9.65	9.65	9.65	0.00	1.00	± 13.3 %
450	43.5	0.87	8.78	8.78	8.78	0.16	1.30	± 13.3 %
750	41.9	0.89	8.23	8.23	8.23	0.46	0.86	± 12.0 %
835	41.5	0.90	8.11	8.11	8.11	0.51	0.80	± 12.0 %
900	41.5	0.97	7.99	7.99	7.99	0.47	0.80	± 12.0 %
1640	40.2	1.31	7.45	7.45	7.45	0.28	0.86	± 12.0 %
1810	40.0	1.40	7.35	7.35	7.35	0.35	0.86	± 12.0 %
1900	40.0	1.40	7.30	7.30	7.30	0.33	0.86	± 12.0 %
2300	39.5	1.67	6.79	6.79	6.79	0.36	0.90	± 12.0 %
2450	39.2	1.80	6.58	6.58	6.58	0.33	0.90	± 12.0 %
2600	39.0	1.96	6.49	6.49	6.49	0.38	0.90	± 12.0 %
5250	35.9	4.71	4.55	4.55	4.55	0.40	1.80	± 13.1 %
5600	35.5	5.07	4.18	4.18	4.18	0.40	1.80	± 13.1 %
5750	35.4	5.22	4.16	4.16	4.16	0.40	1.80	± 13.1 %

^C Frequency validity above 300 MHz of ± 100 MHz only applies for DASY v4.4 and higher (see Page 2), else it is restricted to ± 50 MHz. The uncertainty is the RSS of the ConvF uncertainty at calibration frequency and the uncertainty for the indicated frequency band. Frequency validity below 300 MHz is ± 10, 25, 40, 50 and 70 MHz for ConvF assessments at 30, 64, 128, 150 and 220 MHz respectively. Validity of ConvF assessed at 6 MHz is 4-9 MHz, and ConvF assessed at 13 MHz is 9-19 MHz. Above 5 GHz frequency validity can be extended to ± 110 MHz.

^F At frequencies below 3 GHz, the validity of tissue parameters (ϵ and σ) can be relaxed to ± 10% if liquid compensation formula is applied to measured SAR values. At frequencies above 3 GHz, the validity of tissue parameters (ϵ and σ) is restricted to ± 5%. The uncertainty is the RSS of the ConvF uncertainty for indicated target tissue parameters.

^G Alpha/Depth are determined during calibration. SPEAG warrants that the remaining deviation due to the boundary effect after compensation is always less than ± 1% for frequencies below 3 GHz and below ± 2% for frequencies between 3-6 GHz at any distance larger than half the probe tip diameter from the boundary.

DASY/EASY - Parameters of Probe: EX3DV4 - SN:3600

Calibration Parameter Determined in Head Tissue Simulating Media

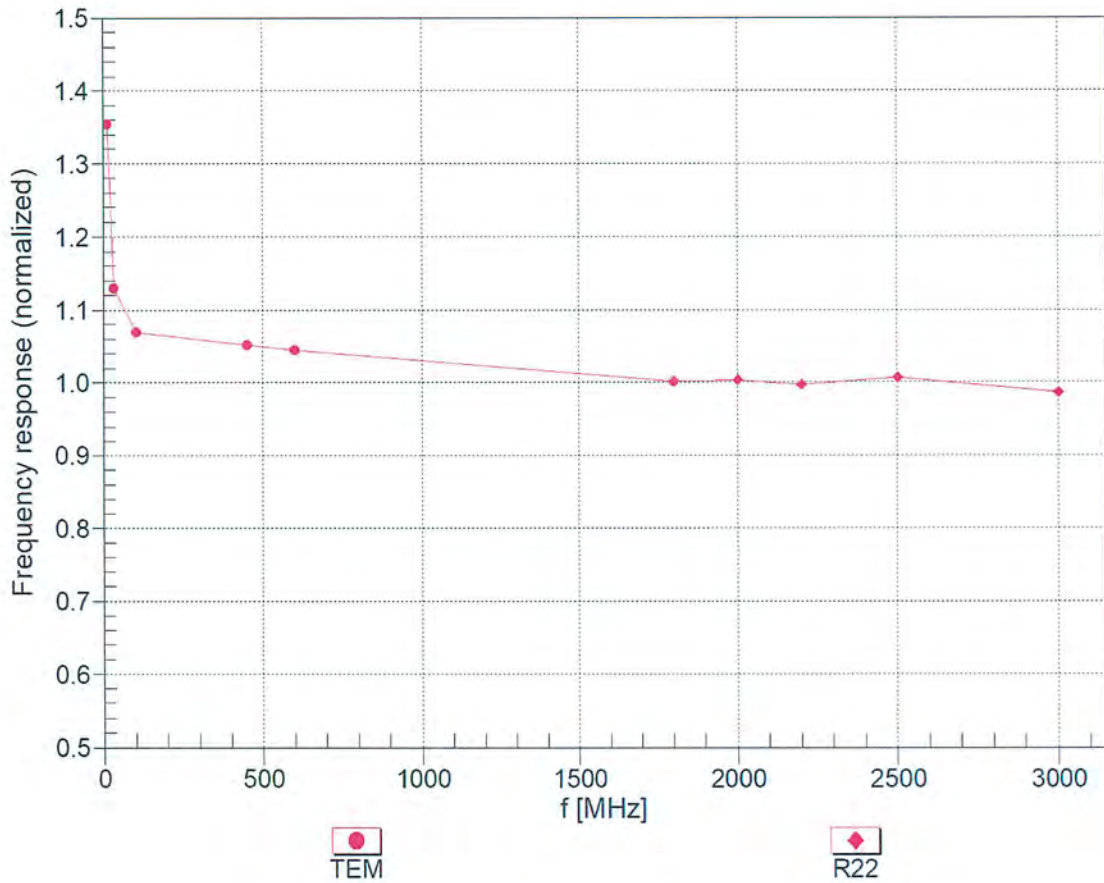
f (MHz) ^C	Relative Permittivity ^F	Conductivity (S/m) ^F	ConvF X	ConvF Y	ConvF Z	Alpha ^G	Depth ^G (mm)	Unc (k=2)
6500	34.5	6.07	4.75	4.75	4.75	0.20	2.50	± 18.6 %

^C Frequency validity at 6.5 GHz is -600/+700 MHz, and ± 700 MHz at or above 7 GHz. The uncertainty is the RSS of the ConvF uncertainty at calibration frequency and the uncertainty for the indicated frequency band.

^F At frequencies 6-10 GHz, the validity of tissue parameters (ϵ and σ) can be relaxed to ± 10% if liquid compensation formula is applied to measured SAR values. The uncertainty is the RSS of the ConvF uncertainty for indicated target tissue parameters.

^G Alpha/Depth are determined during calibration. SPEAG warrants that the remaining deviation due to the boundary effect after compensation is always less than ± 1% for frequencies below 3 GHz; below ± 2% for frequencies between 3-6 GHz; and below ± 4% for frequencies between 6-10 GHz at any distance larger than half the probe tip diameter from the boundary.

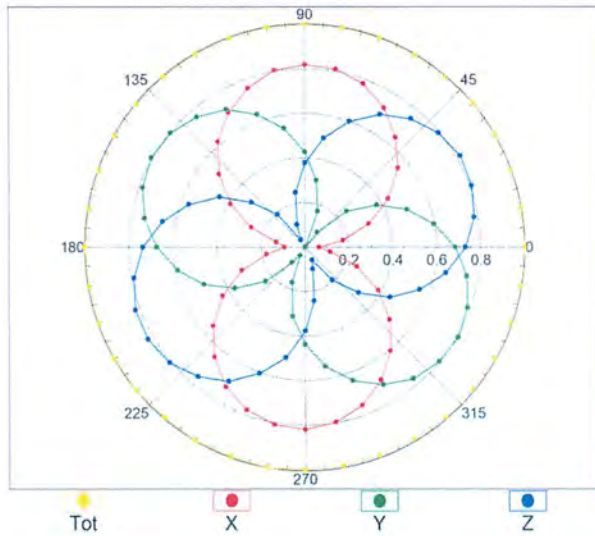
Frequency Response of E-Field (TEM-Cell:ifi110 EXX, Waveguide: R22)



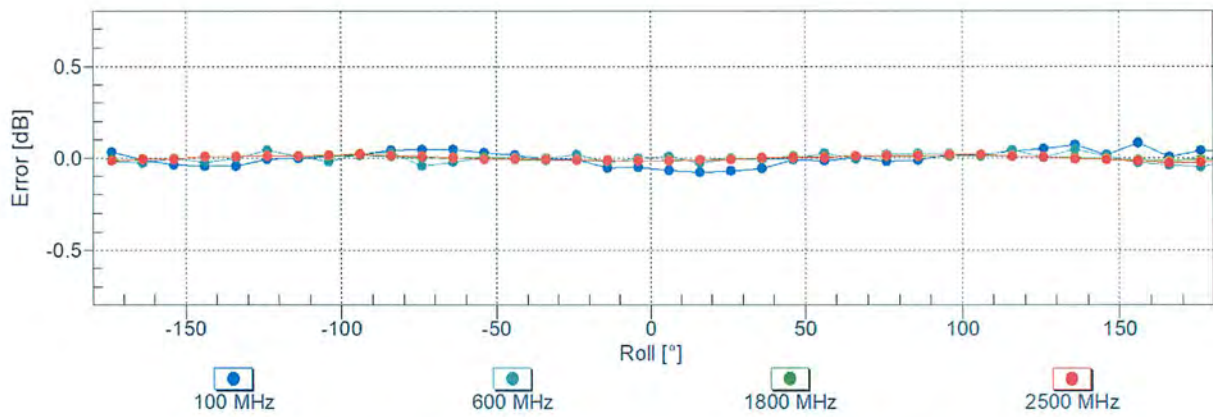
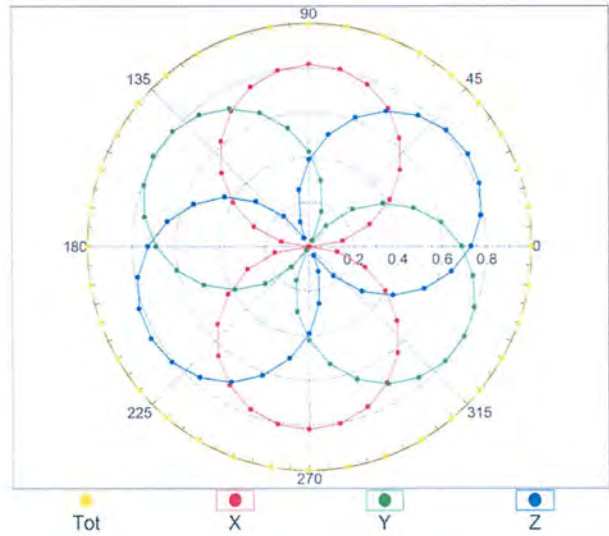
Uncertainty of Frequency Response of E-field: $\pm 6.3\%$ (k=2)

Receiving Pattern (ϕ), $\theta = 0^\circ$

f=600 MHz, TEM

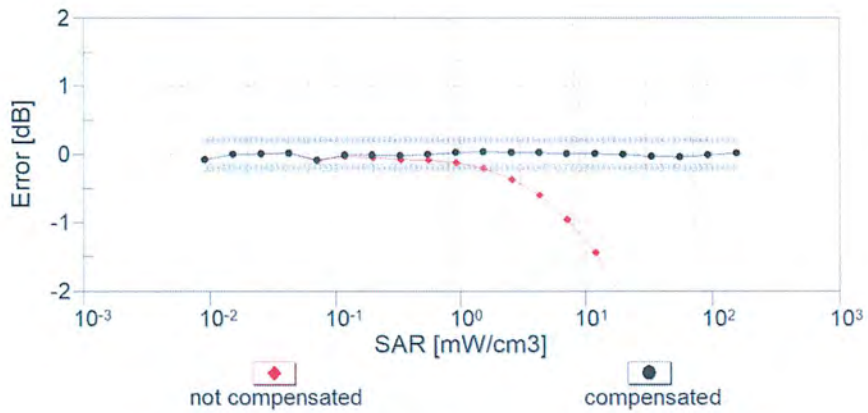
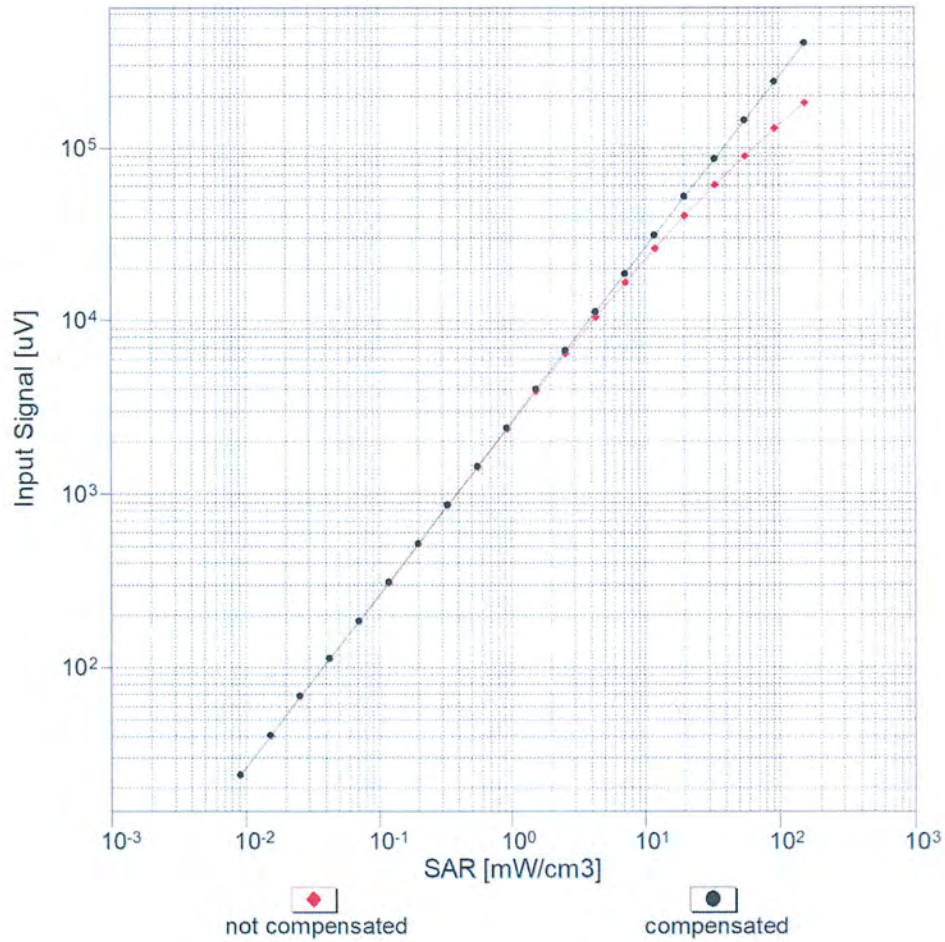


f=1800 MHz, R22



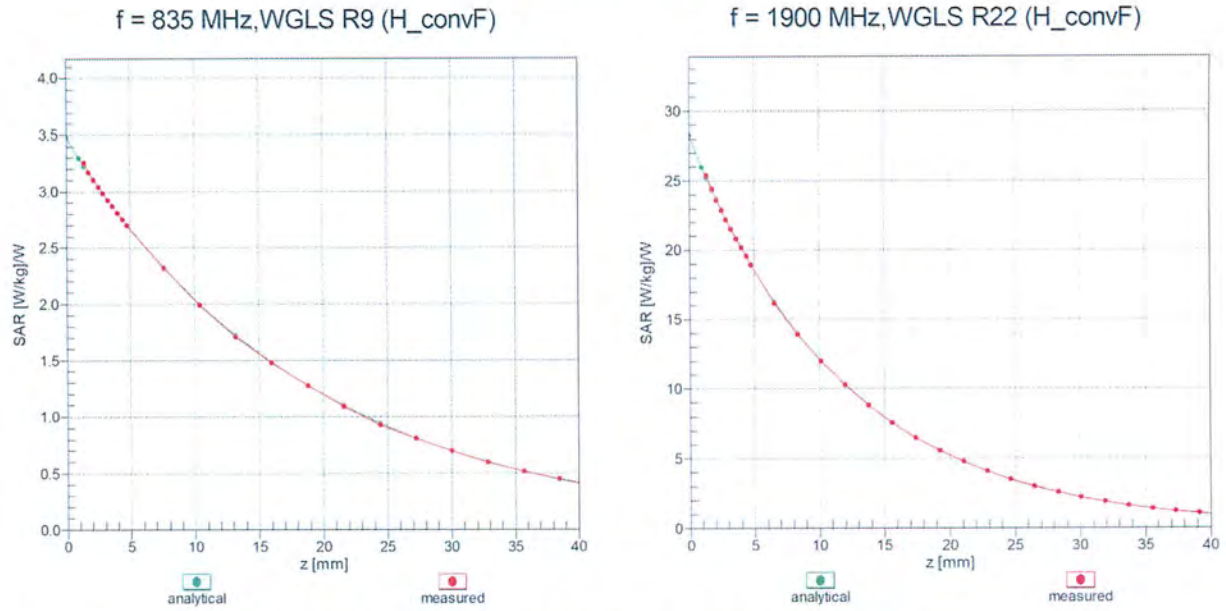
Uncertainty of Axial Isotropy Assessment: $\pm 0.5\%$ (k=2)

Dynamic Range $f(SAR_{head})$ (TEM cell , $f_{eval}= 1900$ MHz)

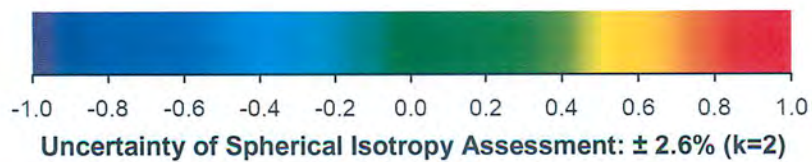
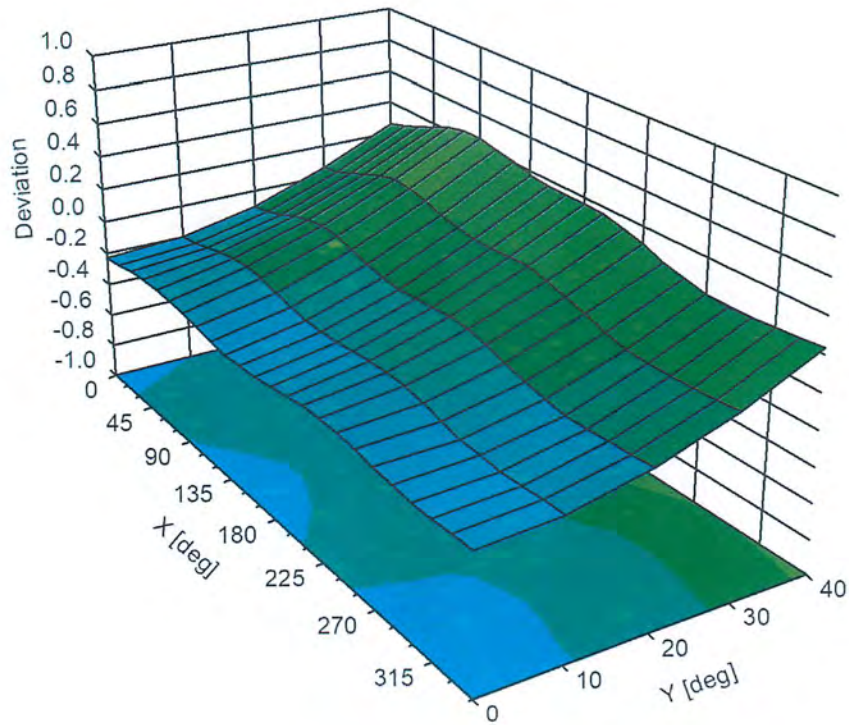


Uncertainty of Linearity Assessment: ± 0.6% (k=2)

Conversion Factor Assessment



Deviation from Isotropy in Liquid Error (ϕ, ϑ), f = 900 MHz



APPENDIX E – DIPOLE CALIBRATION

NCL CALIBRATION LABORATORIES

Calibration File No: DC-1904

Project Number: 5921

Client.: Celltech

Address: 21 – 364 Lougheed Road, Kelowna, BC V1X 7R8, Canada

CERTIFICATE OF CALIBRATION

It is certified that the equipment identified below has been calibrated in the **NCL CALIBRATION LABORATORIES** by qualified personnel following recognized procedures and using transfer standards traceable to NRC/NIST.

Validation Dipole (Head)

Manufacturer: SPEAG

Part number: D2450V2

Frequency: 2450 MHz

Serial No: 825

Calibrated: 27/04/2021

Released on: 05/05/2021

This Calibration Certificate is incomplete unless accompanied by the Calibration Results Summary

Released by: _____

Pieter Erasmus, Quality Manager

NCL Calibration Laboratories

Suite 102, 303 Terryfox Dr.
Ottawa, Ontario, K2K 3J1
Canada

Division of APREL Lab.
Tel: (613) 435-8300
Fax: (613) 435-8306

Conditions

Dipole SN 825 was a re-calibration.

Ambient Temperature of the Laboratory: 21 °C +/- 0.5°C
Temperature of the Tissue: 21 °C +/- 0.5°C

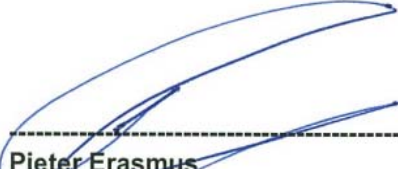
Primary Measurement Standards

Instrument		Serial Number		Cal due date
Signal Generator	HP	83640B	3844A00689	Sept. 17, 2022
Network Analyzer	Keysight	E5063A	MY54502902	Mar. 9, 2023
Spectrum Analyzer	Keysight	N9030B	MY57140772	Apr. 20, 2023

Attestation

The below named signatories have conducted the calibration and review of the data which is presented in this calibration report.

We the undersigned attest that to the best of our knowledge the calibration has been accurately conducted and that all information contained within this report has been reviewed for accuracy and any uncertainties if applicable disclosed.



Pieter Erasmus
Quality Manager



Maryna Nesterova
Test and Calibration Engineer

Calibration Results Summary

The following results relate the Calibrated Dipole and should be used as a quick reference for the user.

Tissue Validation

Tissue	Frequency	Dielectric constant, ϵ_r	Conductivity, σ [S/m]
Head	2450 MHz	40.73	1.86

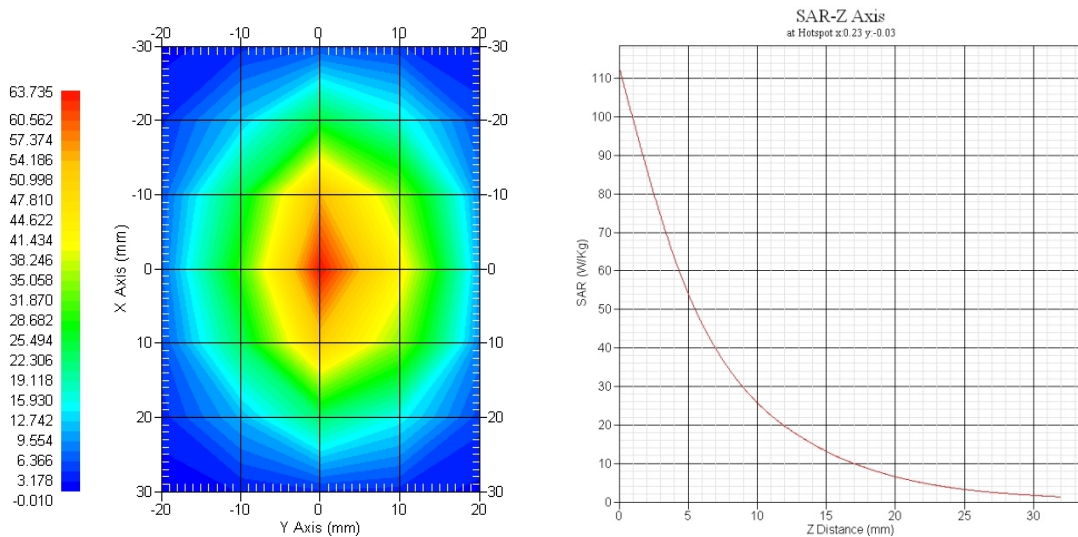
Electrical Specification

Tissue	Frequency	Return Loss	Impedance	SWR:
Head	2450 MHz	-19.83 dB	43.26 Ω	1.23U

System Validation Results

Tissue	Frequency	1-Gram SAR	10-Gram SAR	Uncertainty
Head	2450 MHz	52.719 W/kg	24.015 W/kg	19.8%

Head



Introduction

This Calibration Report has been produced in line with the SSI Dipole Calibration Procedure SSI-TP-018-ALSAS. The results contained within this report are for Validation Dipole SN 825. The calibration routine consisted of a three-step process. Step 1 was a mechanical verification of the dipole to ensure that it meets the mechanical specifications. Step 2 was an Electrical Calibration for the Validation Dipole, where the SWR, Impedance, and the Return loss were assessed. Step 3 involved a System Validation using the ALSAS-10U, along with APREL E-020 30 MHz to 6 GHz E-Field Probe Serial Number 225.

References

- IEEE Standard 1528:2013
IEEE Recommended Practice for Determining the Peak Spatial-Average Specific Absorption Rate (SAR) in the Human Head from Wireless Communications Devices: Measurement Techniques
- EN 62209-1:2016
Human Exposure to RF Fields from hand-held and body-mounted wireless communication devices - Human models, instrumentation, and procedures - Part 1: Procedure to measure the Specific Absorption Rate (SAR) for hand-held mobile wireless devices
- IEC 62209-2:2019
Human exposure to RF fields from hand-held and body-mounted wireless devices - Human models, instrumentation, and procedures - Part 2: specific absorption rate (SAR) for wireless communication devices (30 MHz - 6 GHz)
- D22-012-Tissue dielectric tissue calibration procedure
- D28-002-Dipole procedure for validation of SAR system using a dipole
- IEEE 1309 Standard for Calibration of Electromagnetic Field Sensors and Probes, Excluding Antennas, from 9 kHz to 40 GHz

Conditions

Ambient Temperature of the Laboratory: 21 °C +/- 0.5°C

Temperature of the Tissue: 21 °C +/- 0.5°C

Dipole Calibration uncertainty

The calibration uncertainty for the dipole is made up of various parameters presented below.

	Tolerance, %
Mechanical	2.00
Positioning Error	0.10
Electrical	0.37
Tissue Permittivity	3.88
Tissue Conductivity	3.56
Dipole Validation	1.70
Combined Uncertainty, k=2	4.81

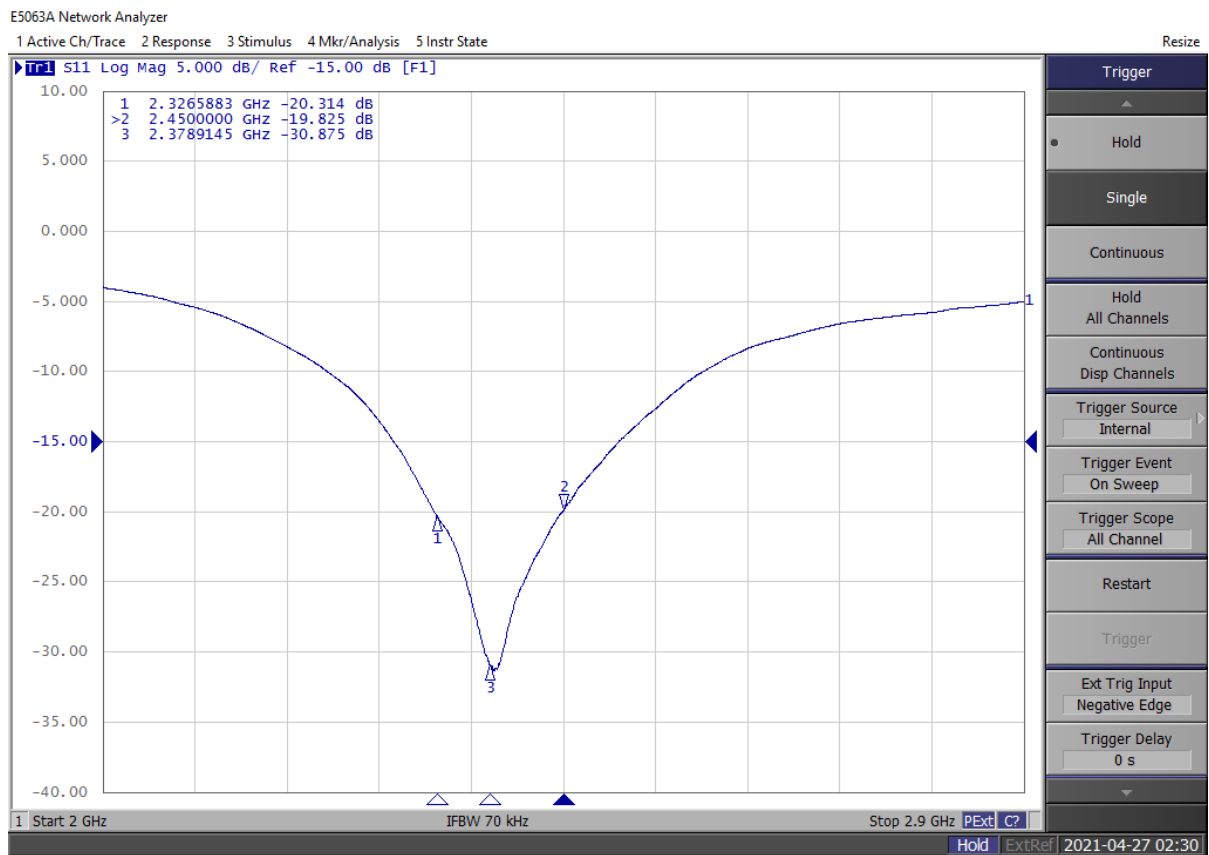
The Following Graphs are the results as displayed on the Vector Network Analyzer.
Electrical Calibration

Test	Head
S11 R/L	-19.83 dB
Impedance	43.26 Ω
SWR	1.23 U

S11 Parameter Return Loss

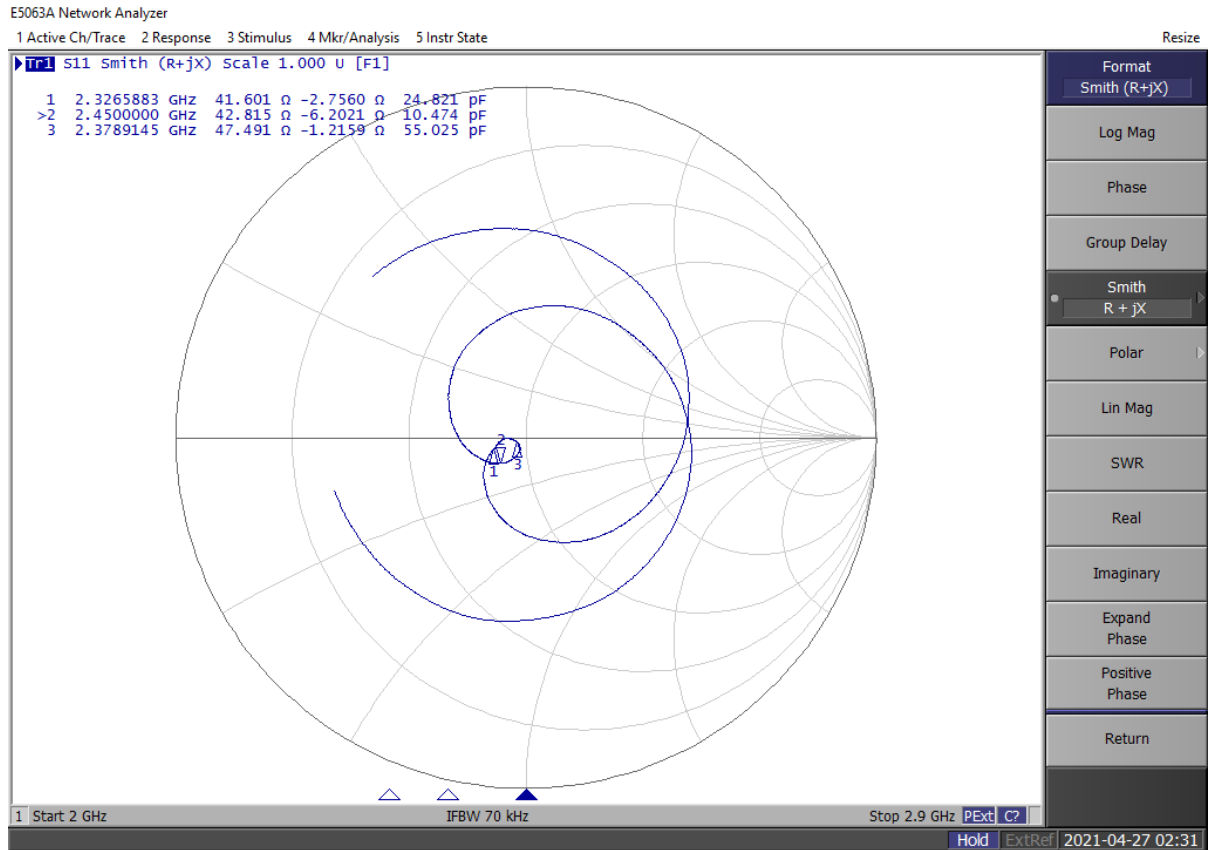
Head

Frequency Range 2326.59 MHz to 2450 MHz



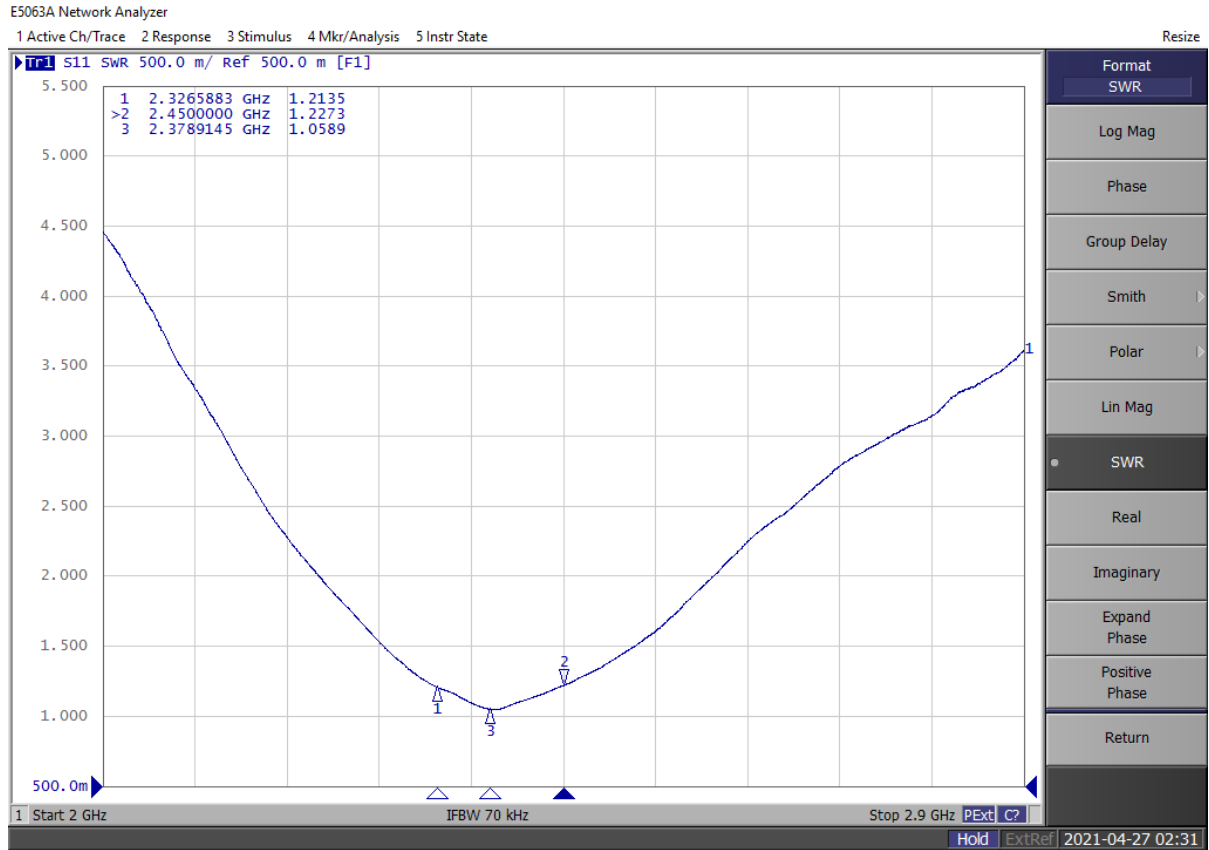
Smith Chart Dipole Impedance

Head



SWR

Head



NCL CALIBRATION LABORATORIES

Calibration File No: DC-1906

Project Number: 5921

Client.: Celltech

Address: 21 – 364 Lougheed Road, Kelowna, BC V1X 7R8, Canada

CERTIFICATE OF CALIBRATION

It is certified that the equipment identified below has been calibrated in the **NCL CALIBRATION LABORATORIES** by qualified personnel following recognized procedures and using transfer standards traceable to NRC/NIST.

Validation Dipole (Head)

Manufacturer: SPEAG

Part number: S5GHzV2

Frequency: 450 MHz

Serial No: 1031

Calibrated: 27/04/2021

Released on: 05/05/2021

This Calibration Certificate is incomplete unless accompanied by the Calibration Results Summary

Released by: _____

Pieter Erasmus, Quality Manager

NCL Calibration Laboratories

Suite 102, 303 Terryfox Dr.
Ottawa, Ontario, K2K 3J1
Canada

Division of APREL Lab.
Tel: (613) 435-8300
Fax: (613) 435-8306

Conditions

Dipole SN 1031 was a re-calibration.

Ambient Temperature of the Laboratory: 21 °C +/- 0.5°C
Temperature of the Tissue: 21 °C +/- 0.5°C

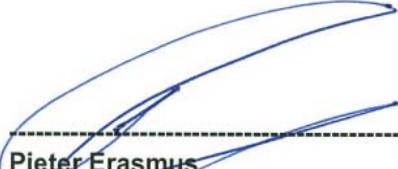
Primary Measurement Standards

Instrument		Serial Number		Cal due date
Signal Generator	HP	83640B	3844A00689	Sept. 17, 2022
Network Analyzer	Keysight	E5063A	MY54502902	Mar. 9, 2023
Spectrum Analyzer	Keysight	N9030B	MY57140772	Apr. 20, 2023

Attestation

The below named signatories have conducted the calibration and review of the data which is presented in this calibration report.

We the undersigned attest that to the best of our knowledge the calibration has been accurately conducted and that all information contained within this report has been reviewed for accuracy and any uncertainties if applicable disclosed.



Pieter Erasmus
Quality Manager



Maryna Nesterova
Test and Calibration Engineer

Calibration Results Summary

The following results relate the Calibrated Dipole and should be used as a quick reference for the user.

Tissue Validation

Tissue	Frequency, MHz	Dielectric constant, ϵ_r	Conductivity, σ [S/m]
Head	5250	37.68	4.75
Head	5600	36.72	5.18
Head	5750	36.33	5.52

Electrical Specification

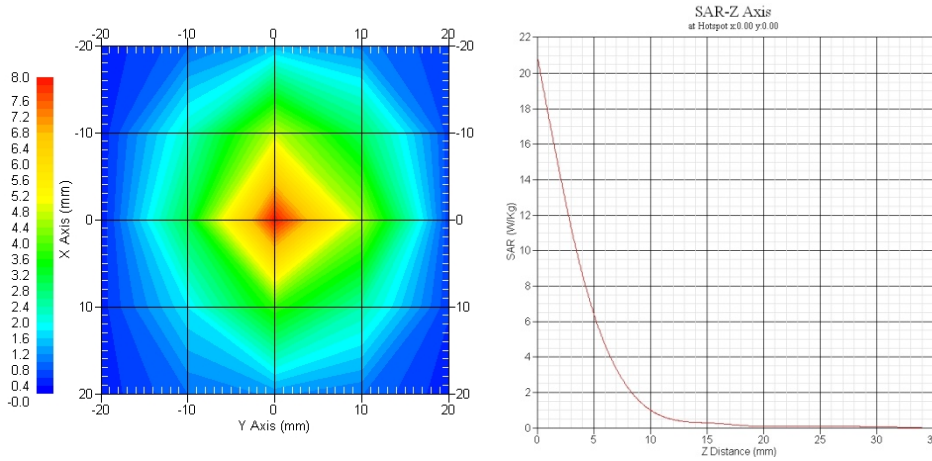
Tissue	Frequency, MHz	Return Loss, dB	Impedance, Ω	SWR
Head	5250	-20.613	51.07	1.21 U
Head	5600	-16.481	67.46	1.35 U
Head	5750	-16.629	41.92	1.35 U

SAR Validation

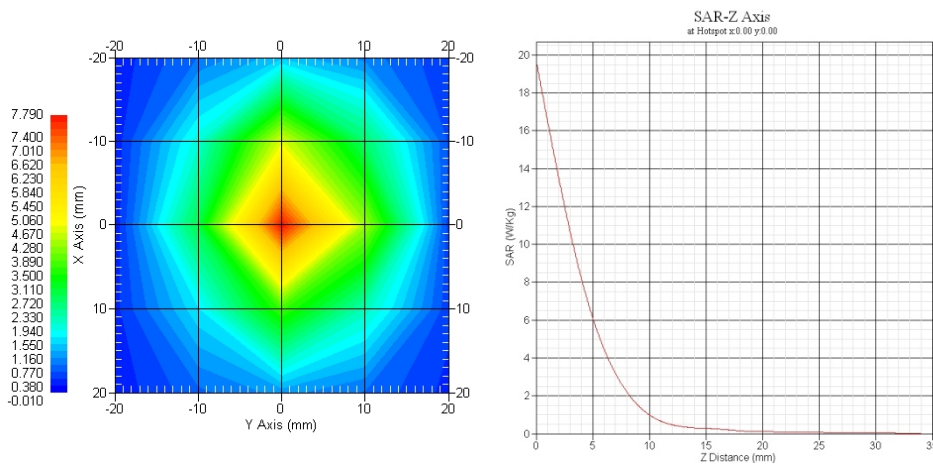
Tissue	Frequency	1-Gram SAR	10-Gram SAR	Uncertainty
Head	5250 MHz	79.47 W/kg	22.91 W/kg	22.3%
Head	5600 MHz	77.14 W/kg	22.15 W/kg	24.8%
Head	5750 MHz	75.54 W/kg	22.01 W/kg	24.5%

SAR Validation Results

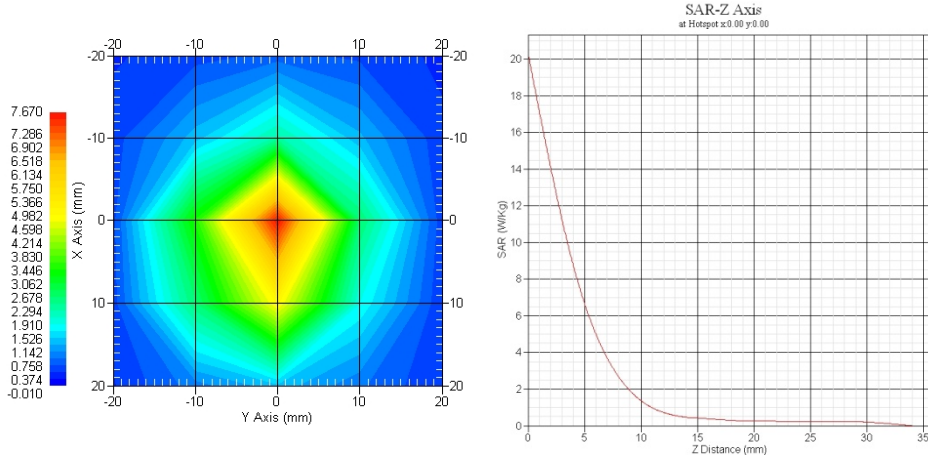
Tissue	Frequency	1-Gram SAR	10-Gram SAR	Uncertainty
Head	5250 MHz	79.47 W/kg	22.91 W/kg	22.31 %



Tissue	Frequency	1-Gram SAR	10-Gram SAR	Uncertainty
Head	5600 MHz	77.14 W/kg	22.15 W/kg	24.8%



Tissue	Frequency	1-Gram SAR	10-Gram SAR	Uncertainty
Head	5750 MHz	75.54 W/kg	22.01 W/kg	24.5%



Introduction

This Calibration Report has been produced in line with the SSI Dipole Calibration Procedure SSI-TP-018-ALSAS. The results contained within this report are for Dipole 1031. The calibration routine consisted of a three-step process. Step 1 was a mechanical verification of the dipole to ensure that it meets the mechanical specifications. Step 2 was an Electrical Calibration for the Validation Dipole, where the SWR, Impedance, and the Return loss were assessed. Step 3 involved a System Validation using the ALSAS-10U, along with APREL E-020 30 MHz to 6 GHz E-Field Probe Serial Number 225.

References

- IEEE Standard 1528:2013
IEEE Recommended Practice for Determining the Peak Spatial-Average Specific Absorption Rate (SAR) in the Human Head from Wireless Communications Devices: Measurement Techniques
- EN 62209-1:2016
Human Exposure to RF Fields from hand-held and body-mounted wireless communication devices - Human models, instrumentation, and procedures - Part 1: Procedure to measure the Specific Absorption Rate (SAR) for hand-held mobile wireless devices
- IEC 62209-2:2019
Human exposure to RF fields from hand-held and body-mounted wireless devices - Human models, instrumentation, and procedures - Part 2: specific absorption rate (SAR) for wireless communication devices (30 MHz - 6 GHz)
- D22-012-Tissue dielectric tissue calibration procedure
- D28-002-Dipole procedure for validation of SAR system using a dipole
- IEEE 1309 Standard for Calibration of Electromagnetic Field Sensors and Probes, Excluding Antennas, from 9 kHz to 40 GHz

Conditions

Ambient Temperature of the Laboratory: 21 °C +/- 0.5°C

Temperature of the Tissue: 21 °C +/- 0.5°C

Dipole Calibration uncertainty

The calibration uncertainty for the dipole is made up of various parameters presented below.

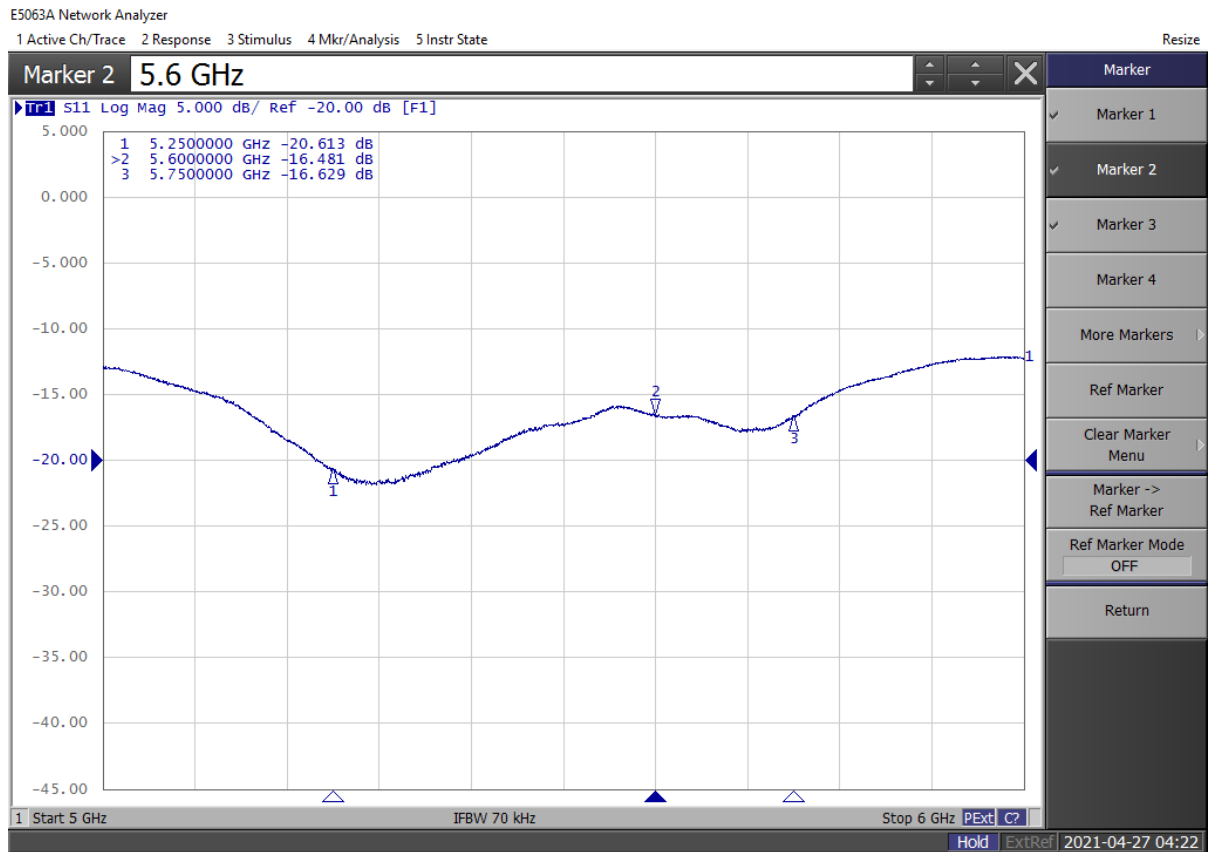
	Tolerance, %
Mechanical	2.00
Positioning Error	0.10
Electrical	0.37
Tissue Permittivity	3.43
Tissue Conductivity	4.68
Dipole Validation	1.70
Combined Uncertainty, k=2	5.21

The Following Graphs are the results as displayed on the Vector Network Analyzer.
Electrical Calibration

Test	5250 MHz	5600 MHz	5750 MHz
S11 R/L, dB	-20.613	-16.481	-16.629
Impedance, Ω	51.07	67.46	41.92
SWR	1.21 U	1.35	1.35

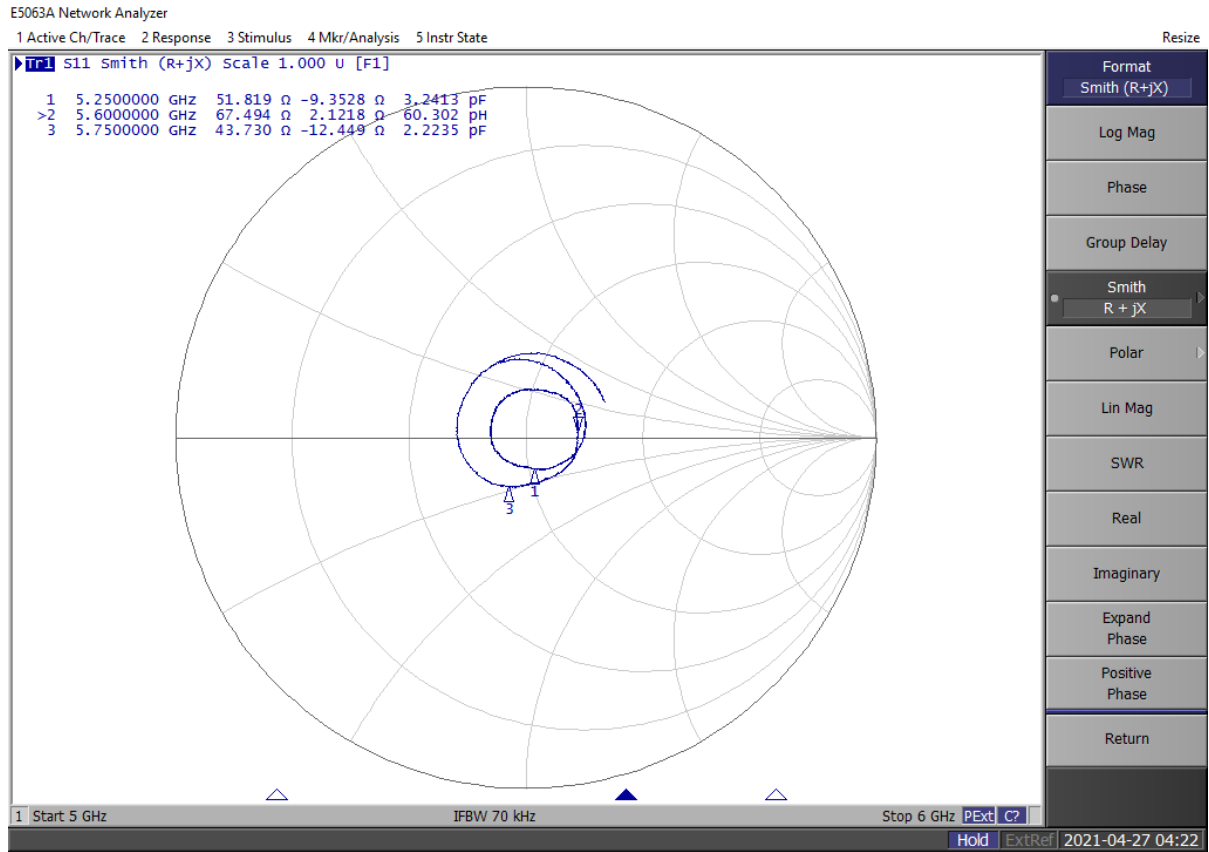
S11 Parameter Return Loss

Head



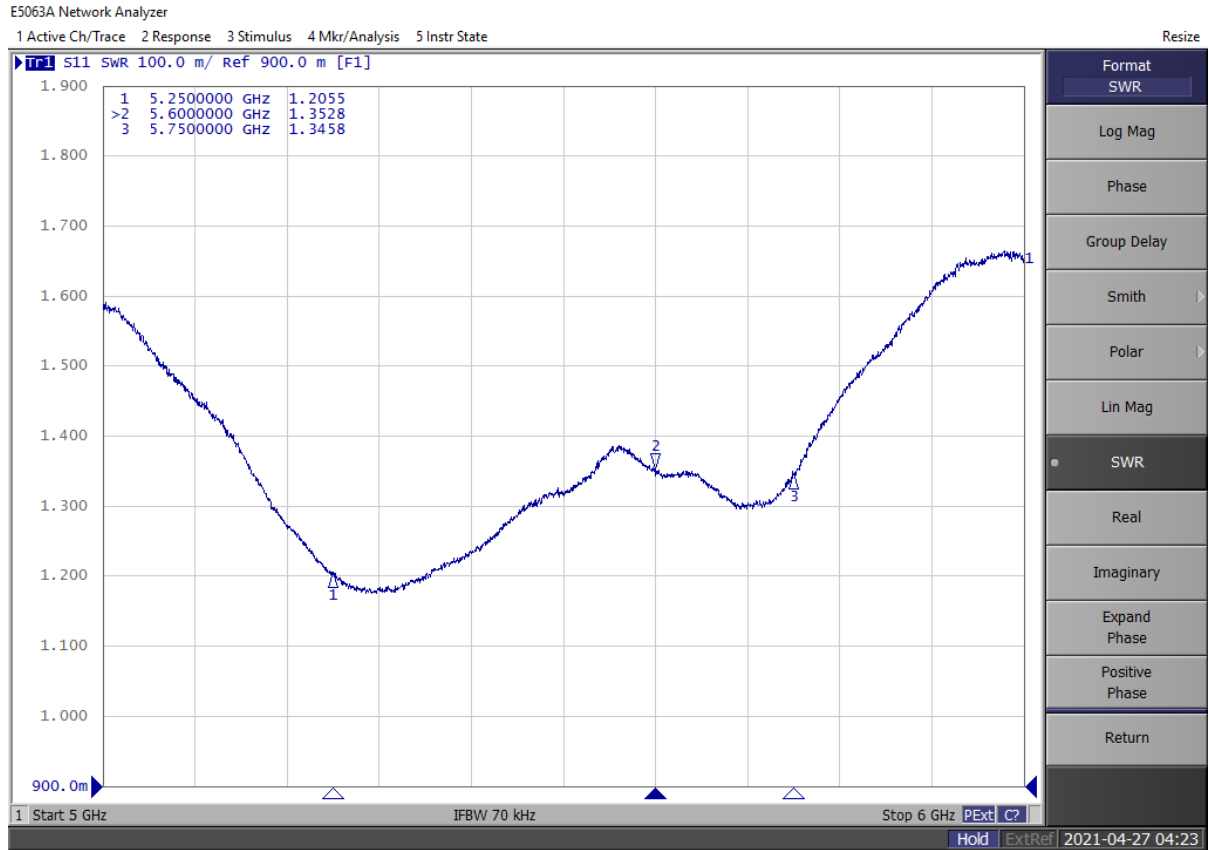
Smith Chart Dipole Impedance

Head



SWR

Head



APPENDIX F - PHANTOM

Certificate of conformity / First Article Inspection

Item	Triple Modular Flat Phantom V5.1
Type No	QD 000 P51 C
Series No	1100 and higher
Manufacturer / Origin	Untersee Composites Knebelstrasse 8, CH-8268 Mannenbach, Switzerland

Tests

The sub-units of item 1100 are identified with the designation 1100/1, 1100/2 and 1100/3. Tests were conducted on all 3 sub-units of this phantom.

Test	Requirement	Details	Units tested
Material thickness	Compliant with the standard requirements.	2 mm +/- 0.2 mm 30 points over the bottom area	all
Material parameters	Dielectric parameters for required frequencies	200 MHz – 6 GHz - Relative permittivity 3 - 5 Loss tangent < 0.05.	Material sample
Material resistivity	The material is compatible with the liquids defined in the standards if handled and cleaned according to the instructions.	DGBE based simulating liquids. Observe Technical Note for material compatibility.	Material Samples
Shape	Internal dimensions	Internal height: > 175 mm Bottom internal length: 280 mm Bottom internal width: 175 mm Nominal filling height: 155 mm Nominal volume: 9.2 l	Pre-series, design
Sagging	Depending on standard	No initial sagging (negative preshaped, change < 0.5 mm)	1100/2

Standards

- [1] IEEE 1528-2013, "IEEE Recommended Practice for Determining the Peak Spatial-Average Specific Absorption Rate (SAR) in the Human Head from Wireless Communications Devices: Measurement Techniques", June 2013
- [2] IEC 62209 – 1, "Specific Absorption Rate (SAR) in the frequency range of 300 MHz to 3 GHz – Measurement Procedure, Part 1: Hand-held mobile wireless communication devices", February 2005
- [3] IEC 62209 – 2, "Evaluation of Human Exposure to Radio Frequency Fields from Handheld and Body-Mounted Wireless Communication Devices in the Frequency Range of 30 MHz to 6 GHz: Human models, Instrumentation and Procedures, Part 2: Procedure to determine the Specific Absorption Rate (SAR) for ... including accessories and multiple transmitters", March 2010
- [4] KDB 865664, "SAR Measurement Requirements for 100 MHz to 6 GHz"

Conformity

Based on the dimensions and sample tests above, we certify that this item is in compliance with the standards [1] to [4] for frequencies > 700 MHz, if operated according to the specific requirements.

Date 16.07.2015

Signature / Stamp

s p e a g

Schmid & Partner Engineering AG
 Zeughausstrasse 43, 8004 Zurich, Switzerland
 Phone +41 44 245 9700, Fax +41 44 245 9779
 info@speag.com, http://www.speag.com