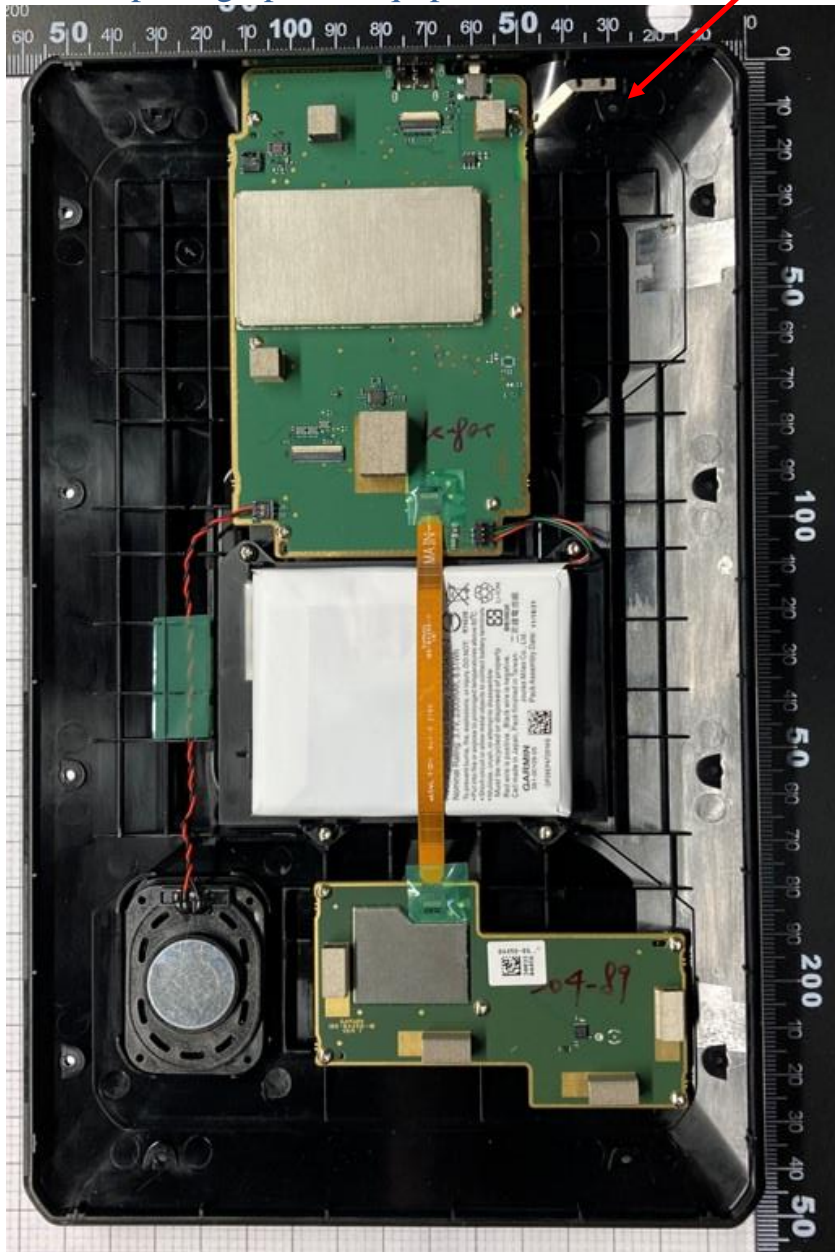


Internal photographs of equipment under test PIFA antennas

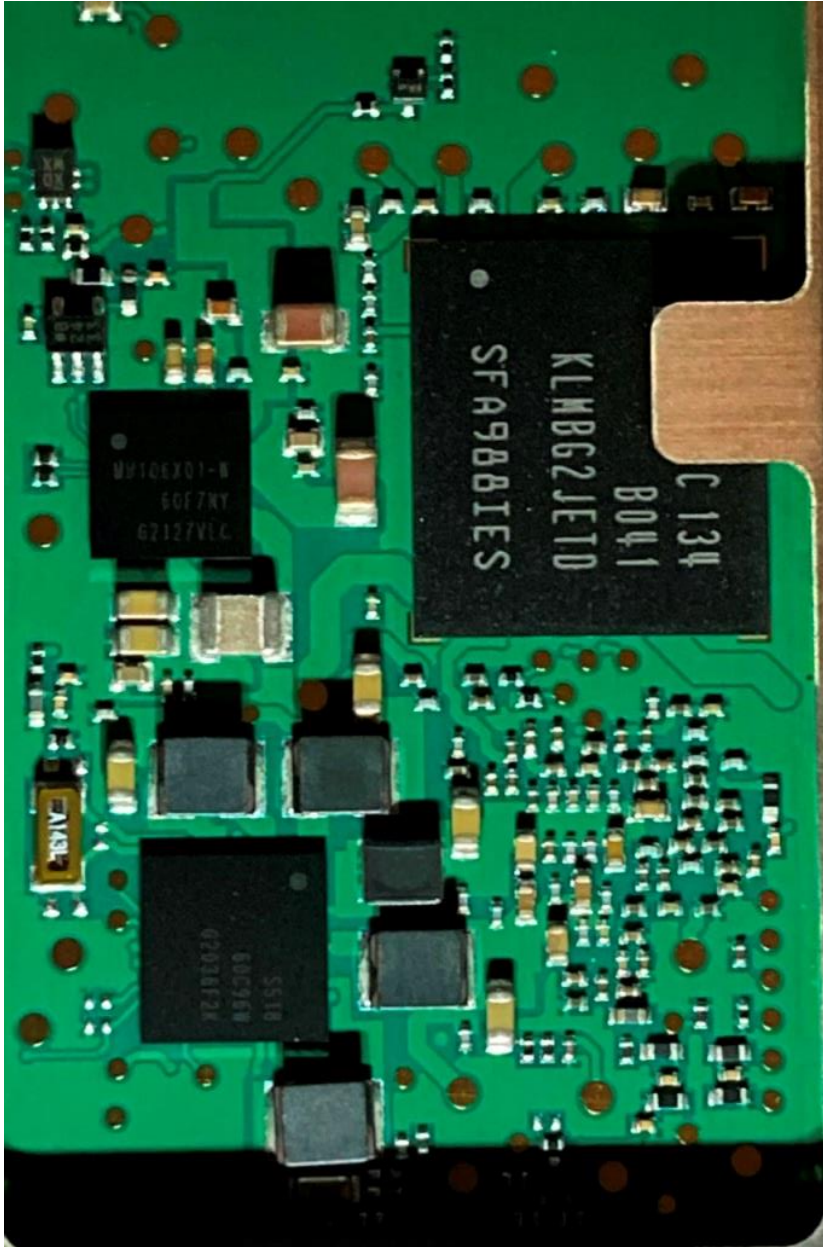


Rogers Labs, Inc.
4405 West 259th Terrace
Louisburg, KS 66053
Phone/Fax: (913) 837-3214
Revision 1

Garmin International, Inc.
Model: A04456
Test: 220123
Test to: CFR47 15C, RSS-210, RSS-247
File: A04456 Short Term Conf IntPho

SN's: 39F004948 / 39F004929
FCC ID: IPH-04456
IC: 1792A-04456
Date: April 30, 2022
Page 1 of 10

Transceiver circuitry

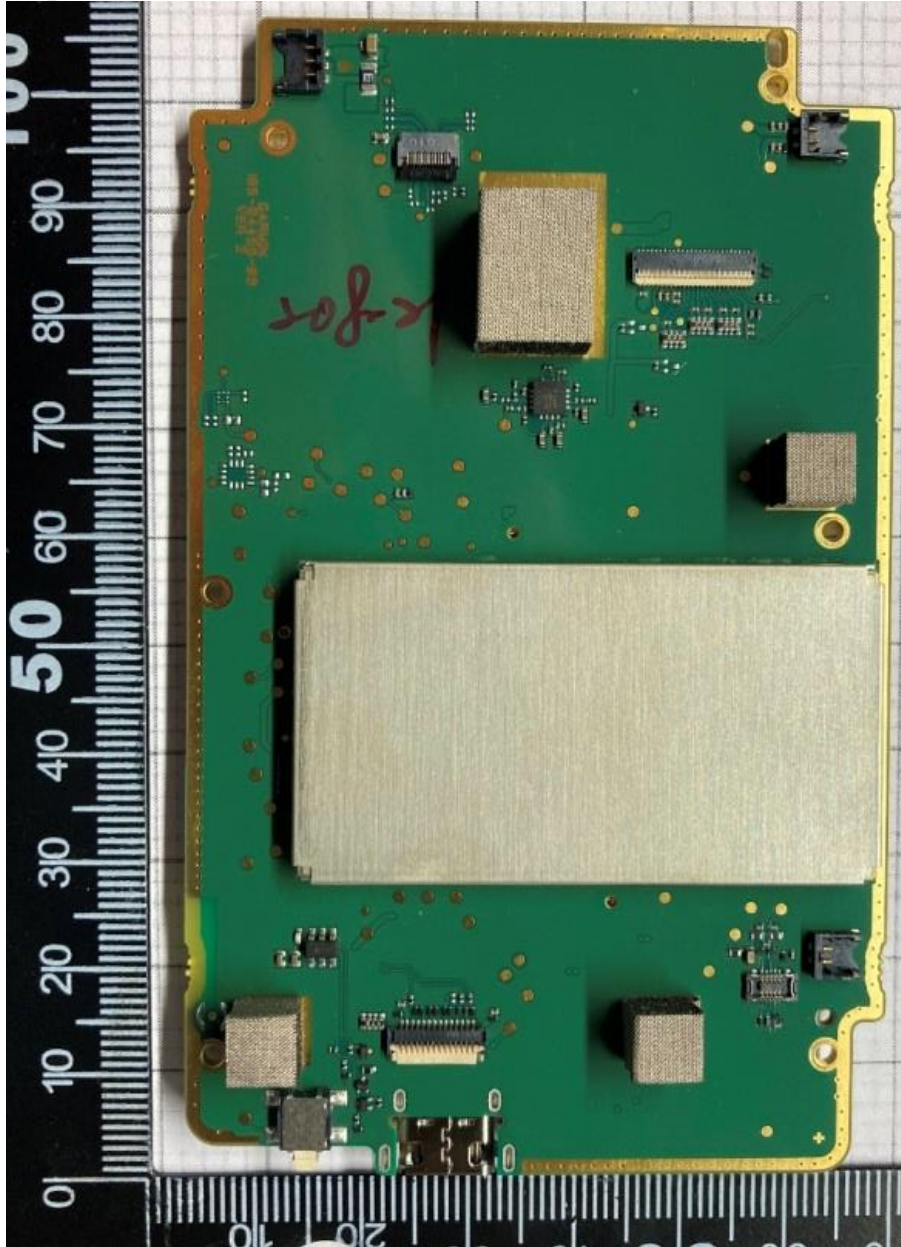


Rogers Labs, Inc.
4405 West 259th Terrace
Louisburg, KS 66053
Phone/Fax: (913) 837-3214
Revision 1

Garmin International, Inc.
Model: A04456
Test: 220123
Test to: CFR47 15C, RSS-210, RSS-247
File: A04456 Short Term Conf IntPho

SN's: 39F004948 / 39F004929
FCC ID: IPH-04456
IC: 1792A-04456
Date: April 30, 2022
Page 2 of 10

Top with Shield

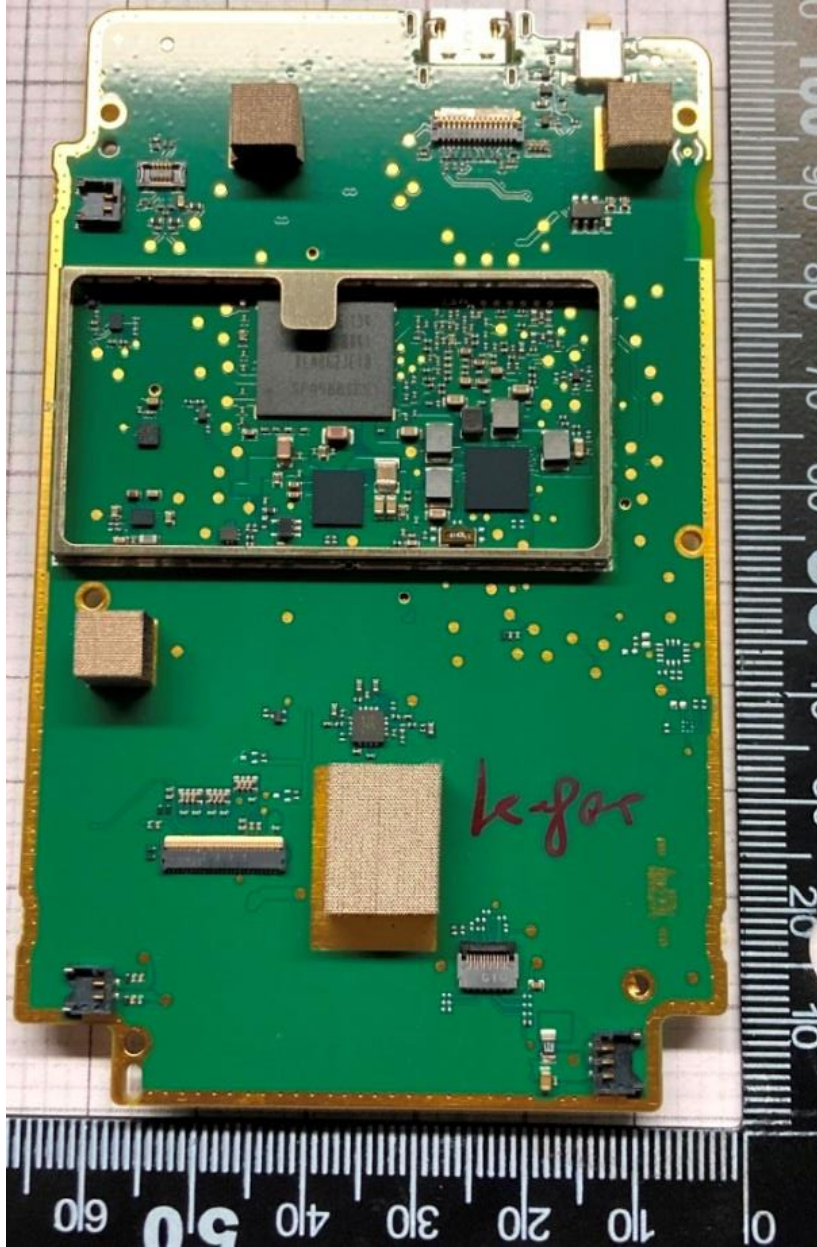


Rogers Labs, Inc.
4405 West 259th Terrace
Louisburg, KS 66053
Phone/Fax: (913) 837-3214
Revision 1

Garmin International, Inc.
Model: A04456
Test: 220123
Test to: CFR47 15C, RSS-210, RSS-247
File: A04456 Short Term Conf IntPho

SN's: 39F004948 / 39F004929
FCC ID: IPH-04456
IC: 1792A-04456
Date: April 30, 2022
Page 3 of 10

Top Shield removed



Rogers Labs, Inc.
4405 West 259th Terrace
Louisburg, KS 66053
Phone/Fax: (913) 837-3214
Revision 1

Garmin International, Inc.
Model: A04456
Test: 220123
Test to: CFR47 15C, RSS-210, RSS-247
File: A04456 Short Term Conf IntPho

SN's: 39F004948 / 39F004929
FCC ID: IPH-04456
IC: 1792A-04456
Date: April 30, 2022
Page 4 of 10

Bottom With Shield



Rogers Labs, Inc.
4405 West 259th Terrace
Louisburg, KS 66053
Phone/Fax: (913) 837-3214
Revision 1

Garmin International, Inc.
Model: A04456
Test: 220123
Test to: CFR47 15C, RSS-210, RSS-247
File: A04456 Short Term Conf IntPho

SN's: 39F004948 / 39F004929
FCC ID: IPH-04456
IC: 1792A-04456
Date: April 30, 2022
Page 5 of 10

Bottom Shield removed and Antenna Connection point

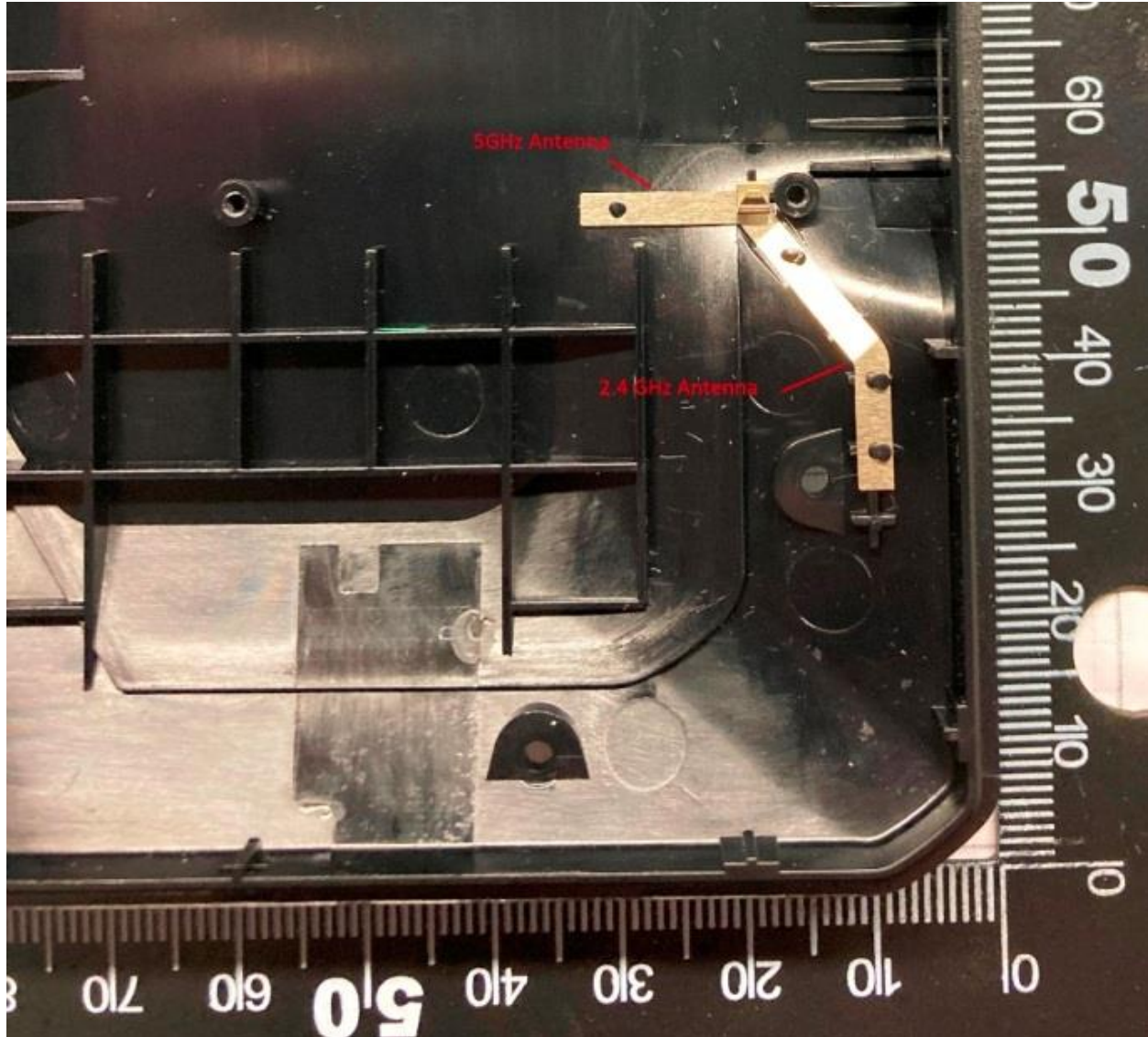


Rogers Labs, Inc.
4405 West 259th Terrace
Louisburg, KS 66053
Phone/Fax: (913) 837-3214
Revision 1

Garmin International, Inc.
Model: A04456
Test: 220123
Test to: CFR47 15C, RSS-210, RSS-247
File: A04456 Short Term Conf IntPho

SN's: 39F004948 / 39F004929
FCC ID: IPH-04456
IC: 1792A-04456
Date: April 30, 2022
Page 6 of 10

Antenna Locations

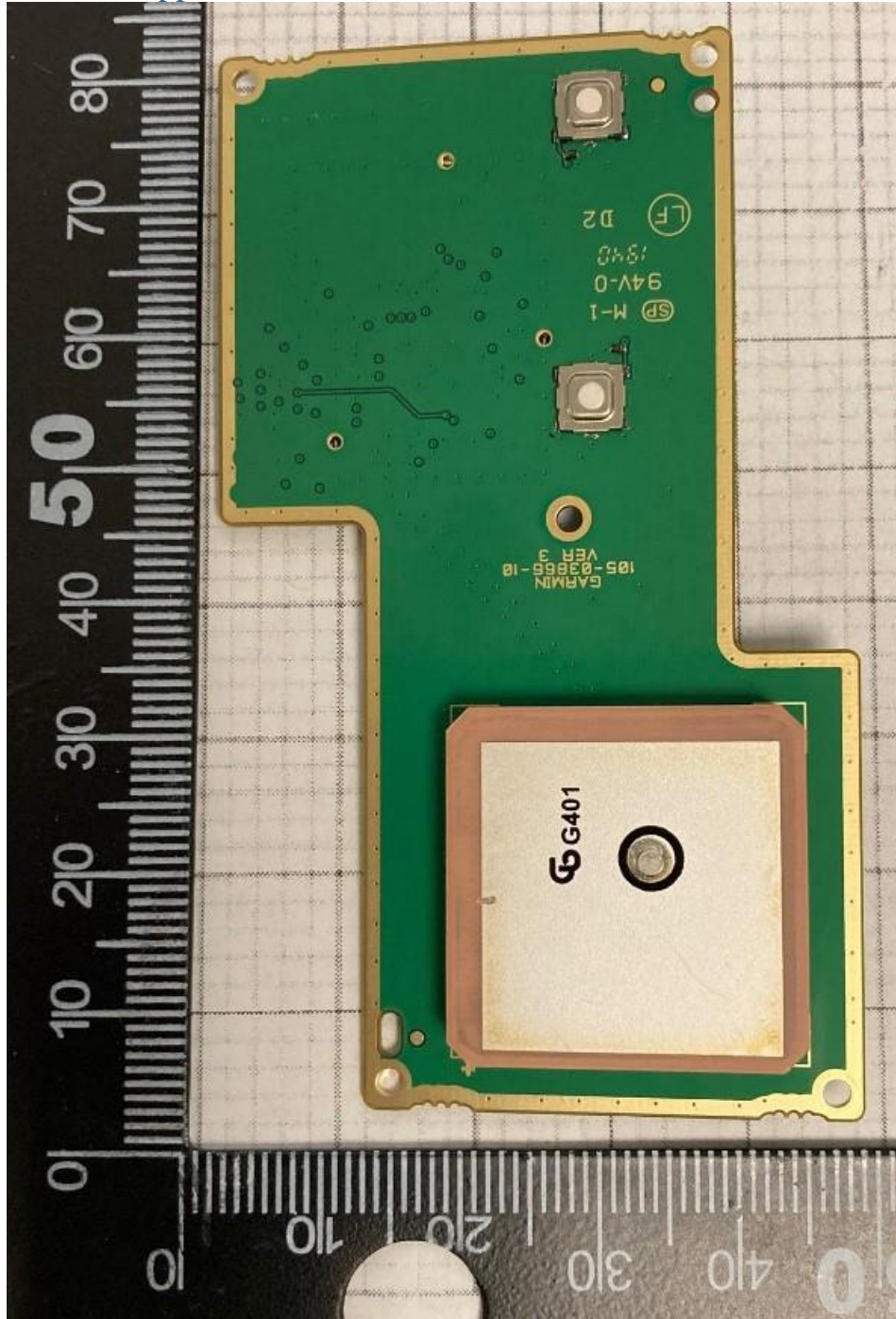


Rogers Labs, Inc.
4405 West 259th Terrace
Louisburg, KS 66053
Phone/Fax: (913) 837-3214
Revision 1

Garmin International, Inc.
Model: A04456
Test: 220123
Test to: CFR47 15C, RSS-210, RSS-247
File: A04456 Short Term Conf IntPho

SN's: 39F004948 / 39F004929
FCC ID: IPH-04456
IC: 1792A-04456
Date: April 30, 2022
Page 7 of 10

Bottom Support PCB

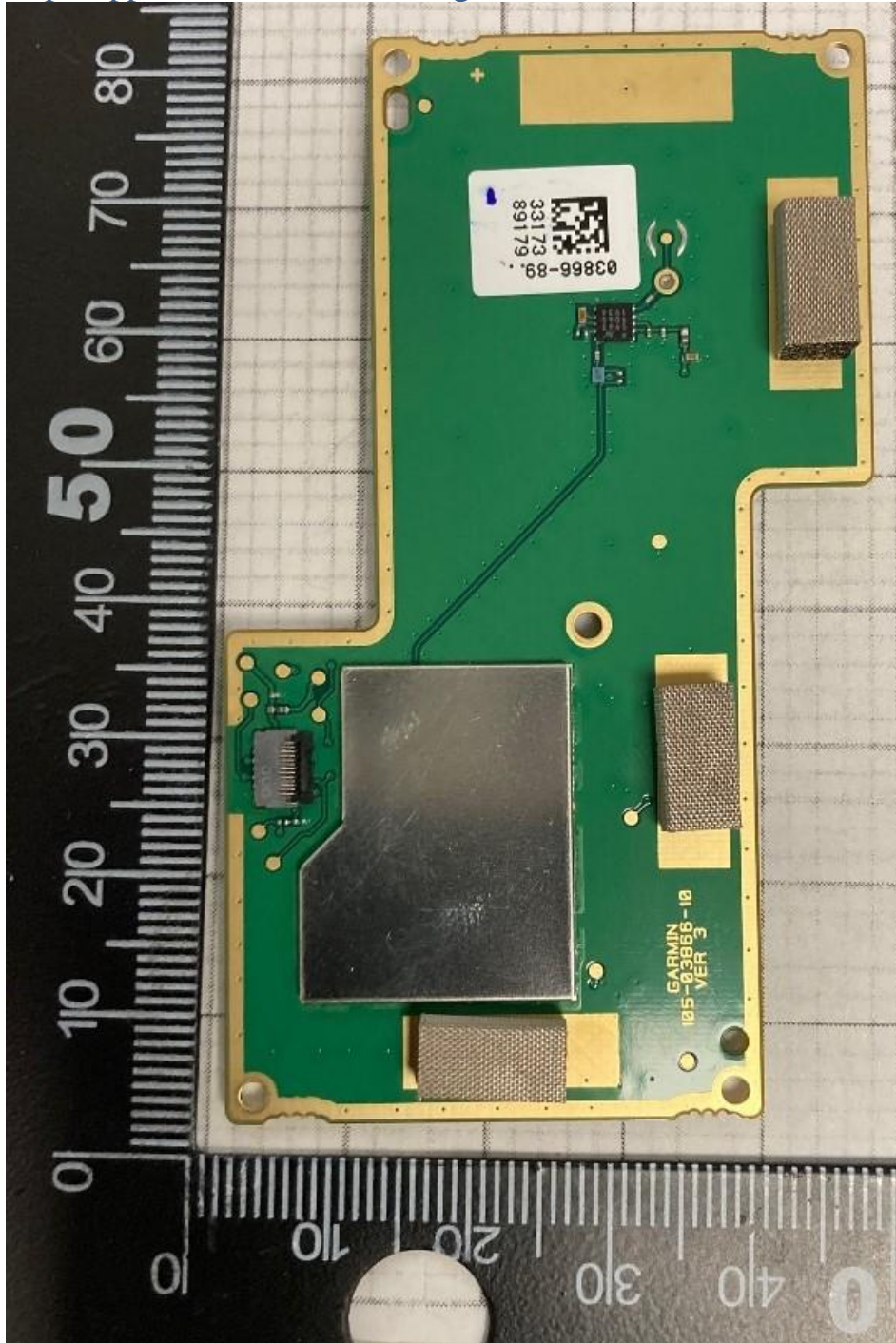


Rogers Labs, Inc.
4405 West 259th Terrace
Louisburg, KS 66053
Phone/Fax: (913) 837-3214
Revision 1

Garmin International, Inc.
Model: A04456
Test: 220123
Test to: CFR47 15C, RSS-210, RSS-247
File: A04456 Short Term Conf IntPho

SN's: 39F004948 / 39F004929
FCC ID: IPH-04456
IC: 1792A-04456
Date: April 30, 2022
Page 8 of 10

Top Support PCB with shielding

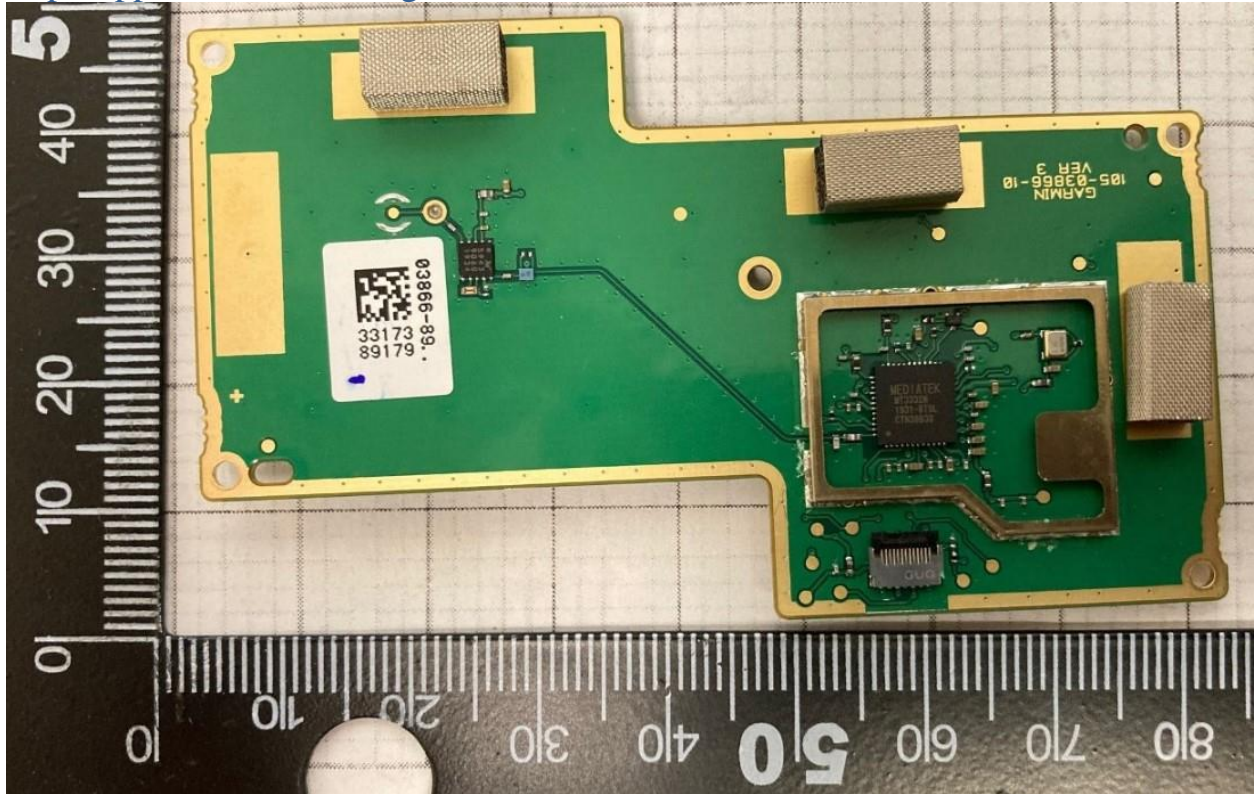


Rogers Labs, Inc.
4405 West 259th Terrace
Louisburg, KS 66053
Phone/Fax: (913) 837-3214
Revision 1

Garmin International, Inc.
Model: A04456
Test: 220123
Test to: CFR47 15C, RSS-210, RSS-247
File: A04456 Short Term Conf IntPho

SN's: 39F004948 / 39F004929
FCC ID: IPH-04456
IC: 1792A-04456
Date: April 30, 2022
Page 9 of 10

Top Support PCB shielding removed



Rogers Labs, Inc.
4405 West 259th Terrace
Louisburg, KS 66053
Phone/Fax: (913) 837-3214
Revision 1

Garmin International, Inc.
Model: A04456
Test: 220123
Test to: CFR47 15C, RSS-210, RSS-247
File: A04456 Short Term Conf IntPho

SN's: 39F004948 / 39F004929
FCC ID: IPH-04456
IC: 1792A-04456
Date: April 30, 2022
Page 10 of 10