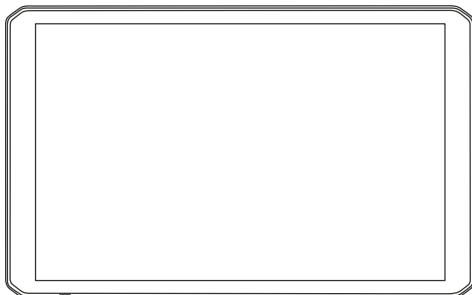


GARMIN.



**DEZL™ OTR810 / OTR1010 /
LGV810 / LGV1010**

Quick Start Manual

Device Overview

WARNING

See the *Important Safety and Product Information* guide in the product box for product warnings and other important information.



① Microphone for hands-free calling and voice command

② Volume control

③ Power key

④ USB power and data port

⑤ Map and data memory card slot

⑥ Magnetic mount interface with 14-pin connector

⑦ Speaker

Mounting and Powering the Device in Your Vehicle

WARNING

This product contains a lithium-ion battery. To prevent the possibility of personal injury or product damage caused by battery exposure to extreme heat, store the device out of direct sunlight.

Both the device and its mount contain magnets. Under certain circumstances, magnets may cause interference with some internal medical devices and electronic devices, including pacemakers, insulin pumps, or hard drives in laptop computers. Keep the device away from medical devices and electronic devices.

Before you use your device on battery power, you should charge it.

- 1 Open the lever ①, press the suction cup to the windshield, and flip the lever back toward the windshield.

The lever must be oriented toward the top of the windshield.



- 2 Plug the vehicle power cable into the port ② on the mount.
- 3 If necessary, loosen the thumbscrew on the suction cup arm ③ and the nut on the ball mount ④, and adjust the mount for better viewing and operation.



- 4 Tighten the thumbscrew on the suction cup arm and the nut on the ball mount.
- 5 Place the device onto the magnetic mount.



- 6 Plug the other end of the vehicle power cable into a power outlet in your vehicle.

Installing the Screw-Down Mount on the Dashboard

Before you can attach the screw-down ball mount to your dashboard, you must select a suitable location on the dashboard.

⚠ WARNING

It is your responsibility to ensure the mounting location complies with all applicable laws and ordinances, and does not block your view of the road during the safe operation of your vehicle.

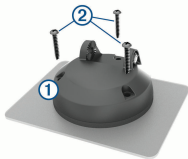
NOTICE

Avoid wires, gauges, air bags, air bag covers, HVAC, and other items when drilling pilot holes and attaching the mount to the vehicle. Garmin® is not responsible for any damages or consequences arising from the installation.

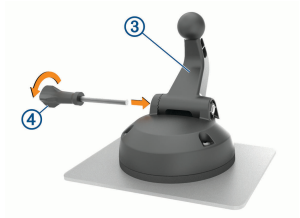
NOTICE

To avoid possible damage to your vehicle, Garmin recommends professional installation of the screw-down ball mount.

- 1 Place the mount ① on the selected location.



- 2 Using the mount as a template, mark the three screw locations.
- 3 Drill pilot holes (optional).
For some types of mounting material, drilling pilot holes is necessary.
- 4 Securely fasten the mount to the surface using the supplied screws ②.
- 5 Insert the ball mount arm ③ into the mount.

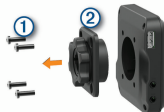


- 6 Insert the thumbscrew ④ into the mount, and tighten it to secure the ball mount arm.

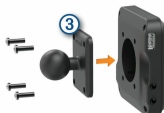
Installing the Ball Mount Adapter

Your device includes a one-inch ball mount that is compatible with third-party mounting solutions.

- 1 Remove the four screws ① securing the mount socket ② to the magnetic mount.



- 2 Remove the mount socket.
- 3 Secure the one-inch ball mount ③ to the magnetic mount using the screws removed in step 1.



Pairing with Your Smartphone

You can pair your dēzl device with your smartphone and the dēzl app to enable additional features and access live information.

- 1 From the app store on your smartphone, install the dēzl app.
- 2 Turn on your dēzl device, and place the device and your

smartphone within 3 m (10 ft.) of each other.


- 3 On your phone, open the *dēzl* app.
- 4 Follow the on-screen instructions to sign in to a Garmin account and complete the pairing and setup process.

Getting the Owner's Manual

Go to garmin.com/manuals/dezlOTR810-1010.

Viewing the Owner's Manual on Your Device

You can view the complete owner's manual on the device screen in many languages.

- 1 Select **Apps > Owner's Manual**.
The owner's manual appears in the same language as the software text.
- 2 Select  to search the owner's manual (optional).

Garmin Support Center

Go to support.garmin.com for help and information, such as product manuals, frequently asked questions, videos, and customer support.

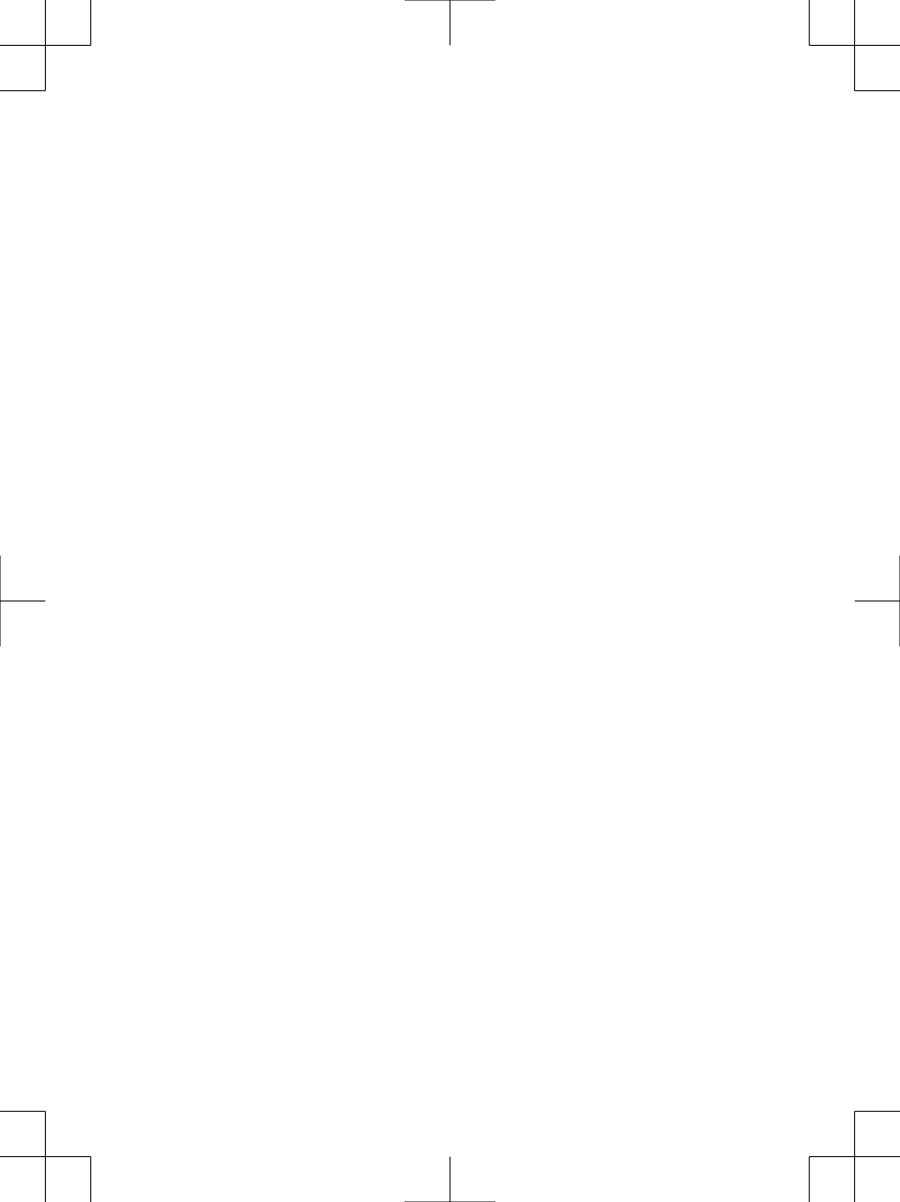
Device Information

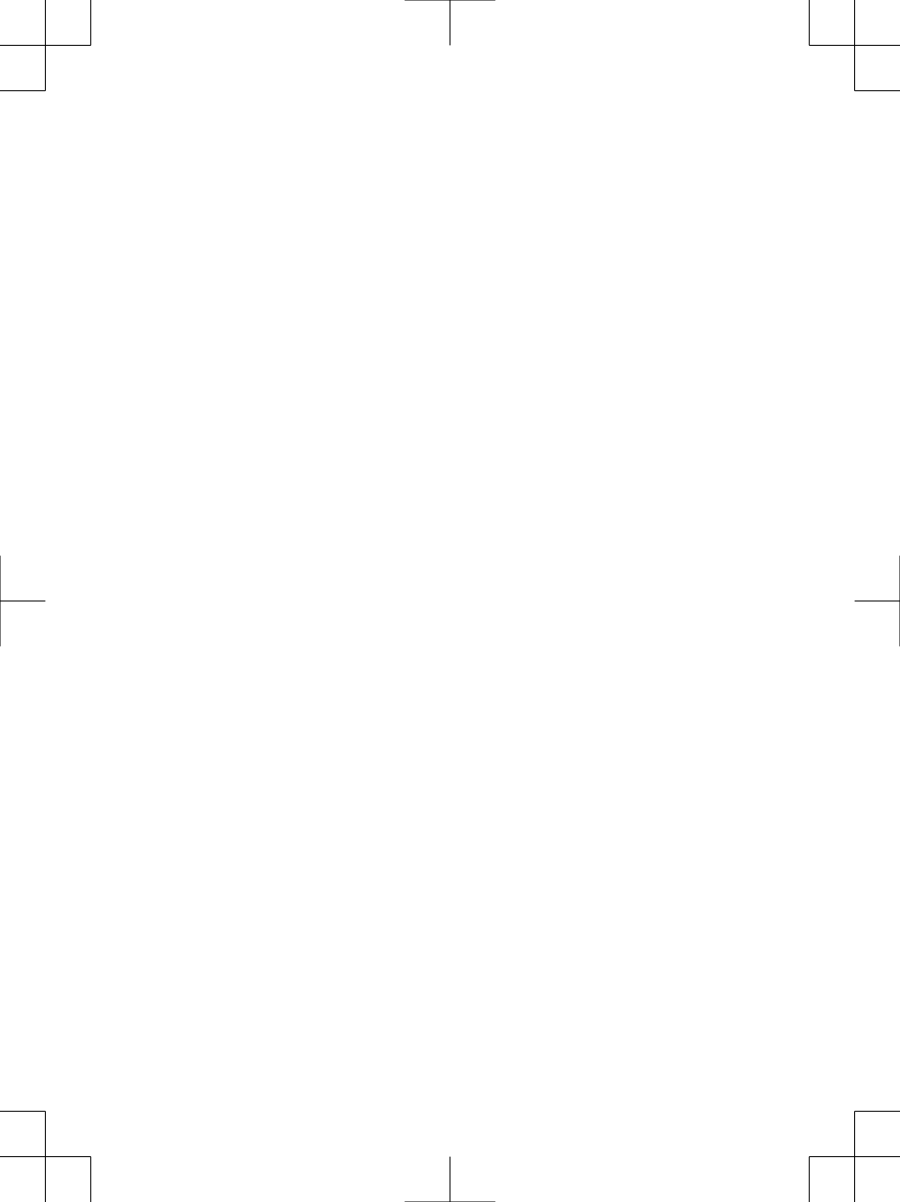
Viewing E-label Regulatory and Compliance Information

- 1 From the settings menu, swipe to the bottom of the menu.
- 2 Select **About Device > Regulatory Information**.

Specifications

| | |
|------------------------------------------|----------------------------------------------------------------------------------------------------------------------------|
| Operating temperature range | From -20° to 60°C (from -4° to 131°F) |
| Charging temperature range | From 0° to 45°C (from 32° to 113°F) |
| Radio frequency (dēzl OTR810 / LGV810) | 2.4 GHz @ 14 dBm |
| Radio frequency (dēzl OTR1010 / LGV1010) | 2.4 GHz @ 15 dBm |
| Power input | Vehicle power using the included vehicle power cable. AC power using an optional accessory (for home and office use only). |
| Battery type | Rechargeable lithium-ion |





support.garmin.com

© 2022 Garmin Ltd. or its subsidiaries

Garmin® and the Garmin logo are trademarks of Garmin Ltd. or its subsidiaries, registered in the USA and other countries. These trademarks may not be used without the express permission of Garmin.

dēzl™ is a trademark of Garmin Ltd. or its subsidiaries. This trademark may not be used without the express permission of Garmin.



Printed in Taiwan
March 2022
I90-02947-03_0A

