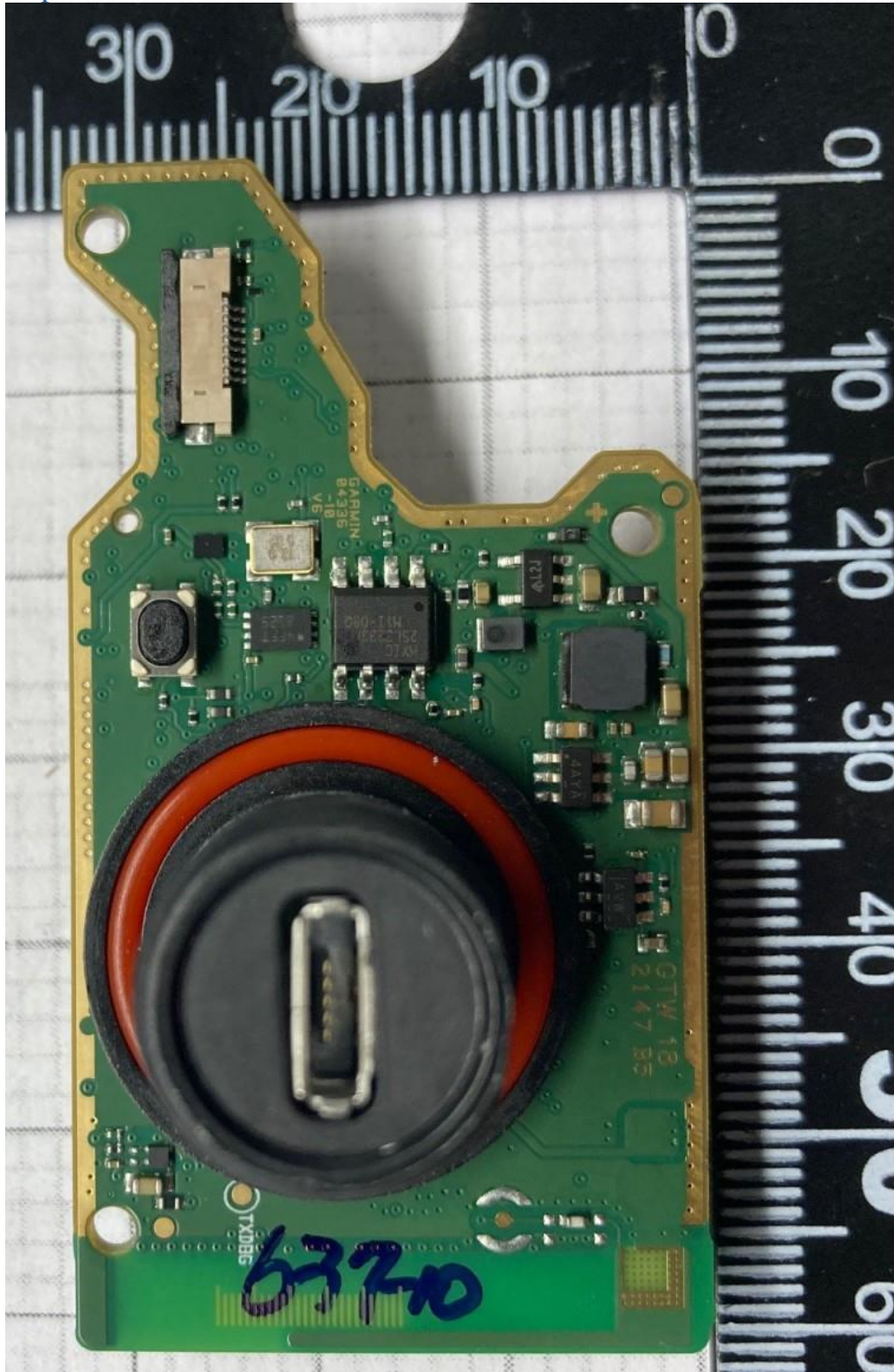


Internal photographs of equipment under test

Top

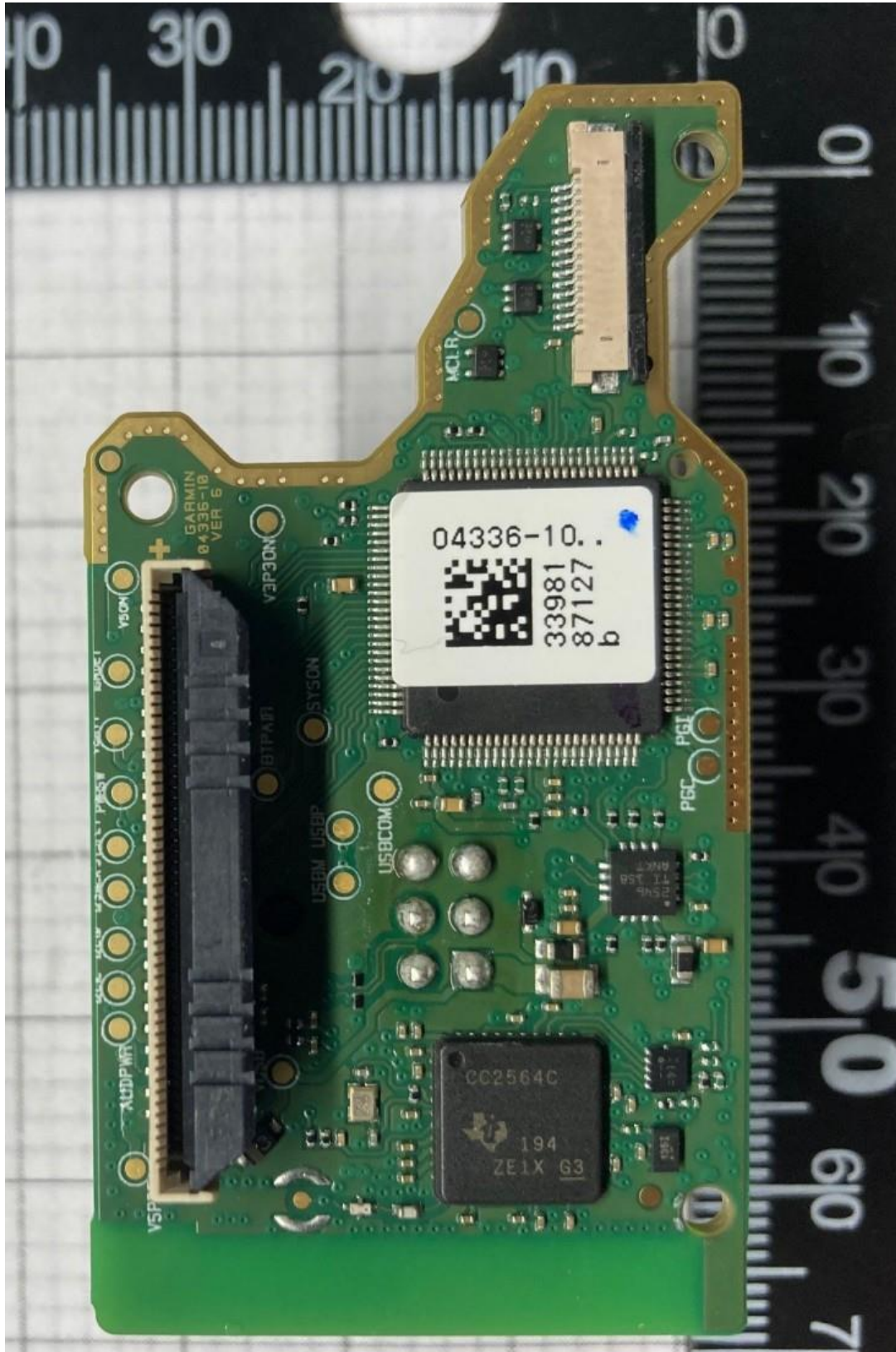


Rogers Labs, Inc.
4405 West 259th Terrace
Louisburg, KS 66053
Phone/Fax: (913) 837-3214
Revision 1

Garmin International, Inc.
HVIN: A04336
Test: 220223
Test to: CFR47 15C, RSS-210, RSS-247
File: A04336 Short Term Conf IntPho

SN's: 7B1000067, 7B1000062
FCC ID: IPH-04336
IC: 1792A-04336
Date: March 21, 2022
Page 1 of 4

Bottom side

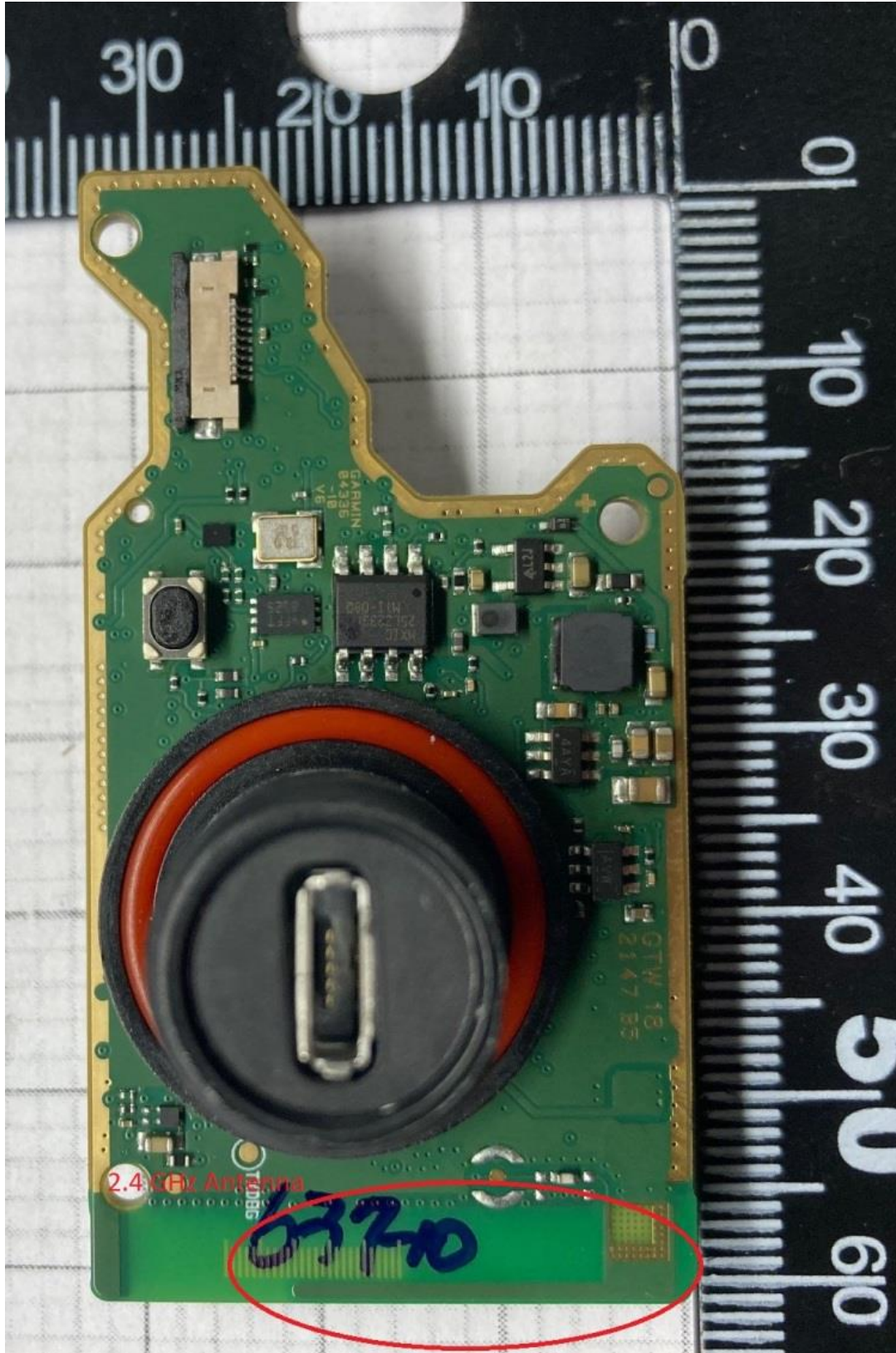


Rogers Labs, Inc.
4405 West 259th Terrace
Louisburg, KS 66053
Phone/Fax: (913) 837-3214
Revision 1

Garmin International, Inc.
HVIN: A04336
Test: 220223
Test to: CFR47 15C, RSS-210, RSS-247
File: A04336 Short Term Conf IntPho

SN's: 7B1000067, 7B1000062
FCC ID: IPH-04336
IC: 1792A-04336
Date: March 21, 2022
Page 2 of 4

Antenna Locations

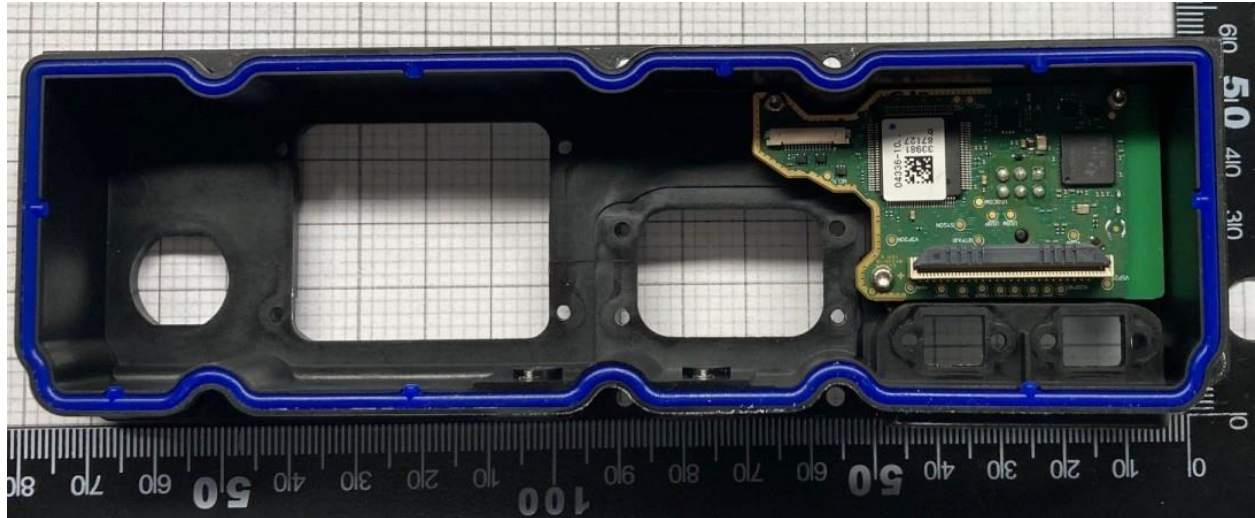


Rogers Labs, Inc.
4405 West 259th Terrace
Louisburg, KS 66053
Phone/Fax: (913) 837-3214
Revision 1

Garmin International, Inc.
HVIN: A04336
Test: 220223
Test to: CFR47 15C, RSS-210, RSS-247
File: A04336 Short Term Conf IntPho

SN's: 7B1000067, 7B1000062
FCC ID: IPH-04336
IC: 1792A-04336
Date: March 21, 2022
Page 3 of 4

Installed in enclosure



Rogers Labs, Inc.
4405 West 259th Terrace
Louisburg, KS 66053
Phone/Fax: (913) 837-3214
Revision 1

Garmin International, Inc.
HVIN: A04336
Test: 220223
Test to: CFR47 15C, RSS-210, RSS-247
File: A04336 Short Term Conf IntPho

SN's: 7B1000067, 7B1000062
FCC ID: IPH-04336
IC: 1792A-04336
Date: March 21, 2022
Page 4 of 4