

GARMIN®



# DEZL™ HEADSET

---

Owner's Manual

© 2022 Garmin Ltd. or its subsidiaries

All rights reserved. Under the copyright laws, this manual may not be copied, in whole or in part, without the written consent of Garmin. Garmin reserves the right to change or improve its products and to make changes in the content of this manual without obligation to notify any person or organization of such changes or improvements. Go to [www.garmin.com](http://www.garmin.com) for current updates and supplemental information concerning the use of this product.

Garmin® and the Garmin logo are trademarks of Garmin Ltd. or its subsidiaries, registered in the USA and other countries. These trademarks may not be used without the express permission of Garmin.

dēzl™ is a trademark of Garmin Ltd. or its subsidiaries. This trademark may not be used without the express permission of Garmin.

The BLUETOOTH® word mark and logos are owned by the Bluetooth SIG, Inc., and any use of such word mark or logo by Garmin is under license.

# Table of Contents

<b>Getting Started</b> .....	<b>1</b>
Device Overview .....	2
Charging the Device .....	3
Turning the Headset On or Off .....	4
Turning Active Noise Control On or Off .....	5
Media Controls .....	6
Microphone Controls .....	7
Removing the Earcup .....	8
<b>Pairing with Your Smartphone</b> .....	<b>9</b>
<b>Voice Assistant Features</b> .....	<b>9</b>
Tips for Using Voice Commands .....	9
Launching Garmin Voice-Activated Navigation .....	10
Using the Voice Assistant on Your Smartphone .....	11
<b>Settings</b> .....	<b>11</b>
<b>Device Maintenance</b> .....	<b>11</b>
Updating the Software Using the Garmin dēzl App .....	11
Garmin Support Center .....	11
Device Care .....	12
<b>Device Information</b> .....	<b>13</b>
Status LEDs .....	13
Specifications .....	14
<b>Troubleshooting</b> .....	<b>14</b>
My headset battery does not charge... ..	14
OK Garmin voice commands do not work.....	14
Left and right audio channels are reversed .....	14
Resetting the Headset to Factory Default Settings.....	14



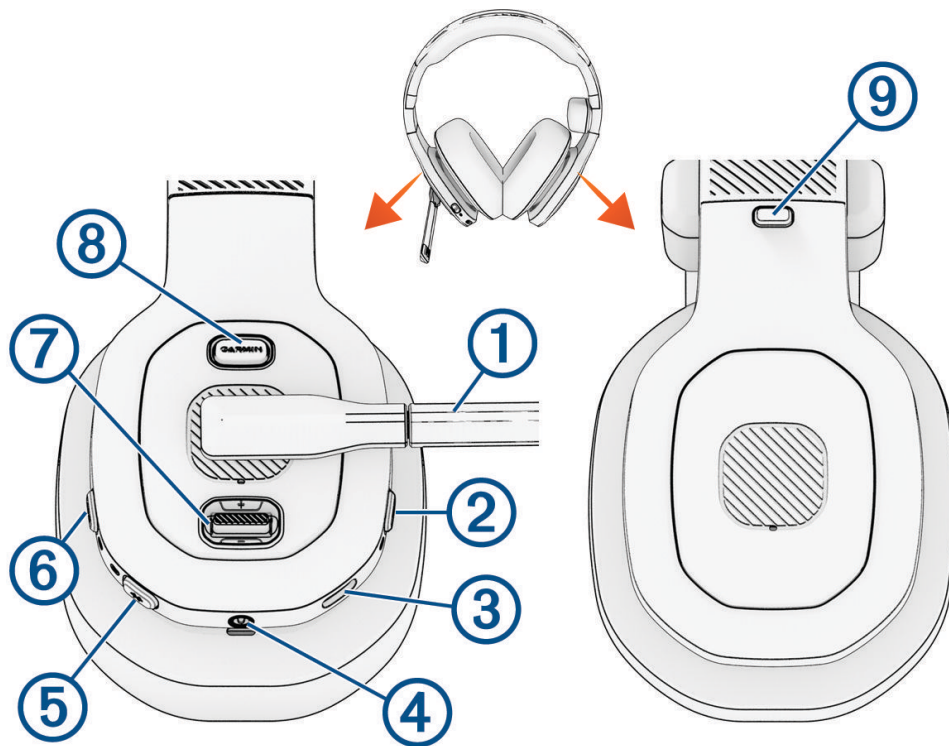
# Getting Started

## WARNING

See the *Important Safety and Product Information* guide in the product box for product warnings and other important information.

---

## Device Overview



① Microphone boom	Move the microphone boom to the vertical position to mute the microphone. Move the microphone boom left or right to enable the microphone and change the headset orientation.
② Power button	Press to turn the device on or off.
③ USB power port	Connect a USB power cable to charge the headset.
④ 3.5 mm audio jack	Connect a 3.5 mm audio cable.
⑤ Bluetooth® button	Hold to enter Bluetooth pairing mode. Press to connect to the next paired device.
⑥ ANC button	Press to enable or disable active noise control.
⑦ Rocker	Move up to increase the volume. Move down to decrease the volume. Hold up to move to the next audio track. Hold down to move to the previous audio track. Press to play, pause, or resume media. Press to answer incoming calls or switch to a second call. Press and hold to hang up a call.
⑧ Garmin® button	Press to activate OK Garmin voice commands with a paired navigation device. Hold to activate the voice assistant on your smartphone.
⑨ Earcup release button	Press to remove the earcup (dēzl Headset 200 only).

## Charging the Device

### **WARNING**

This device contains a lithium-ion battery. See the *Important Safety and Product Information* guide in the product box for product warnings and other important information.

**NOTE:** The device does not charge when outside the approved temperature range (*Specifications, page 14*).

**1** Plug the small end of the USB cable into the USB port on the headset.



**2** Plug the large end of the USB cable into a power source, such as a USB wall charger or a computer USB port.

**3** Charge the device completely.

The status LED flashes green while charging. The status LED is solid green when charging is complete.

## Turning the Headset On or Off

- To turn on the headset, hold the power button ① for three seconds.



- To turn off the headset, hold the power button until a tone plays and the headset turns off.



## Turning Active Noise Control On or Off

- To turn on active noise control, press **ANC** ①.



A tone plays and the ANC LED turns on.

- To turn off active noise control, press **ANC** again.  
A tone plays and the ANC LED turns off.

## Media Controls

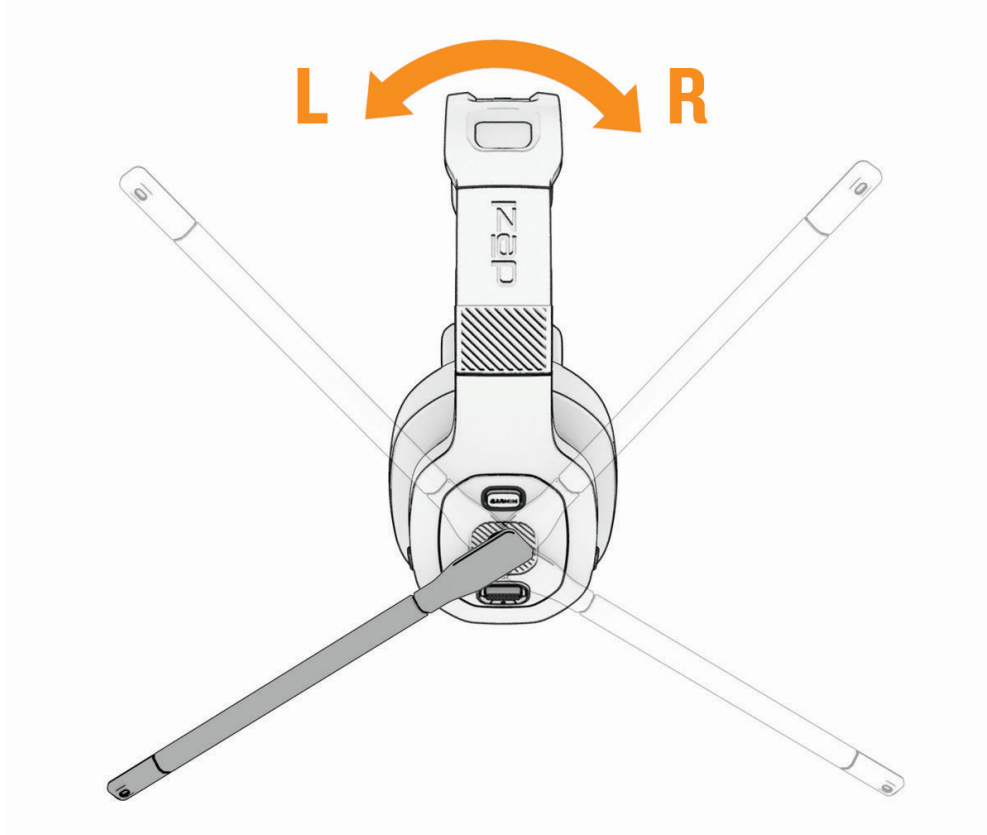
You can use the rocker to control the headset volume, music playback, and phone calls. You can move the rocker up and down, and you can press it like a button.



- Move the rocker up or down to increase or decrease the volume.
- Hold the rocker up to play the next audio track.
- Hold the rocker down to play the previous audio track.
- Press the rocker to play, pause, or resume audio playback.
- Press the rocker to answer incoming phone calls from your paired smartphone.
- Press the rocker to switch to a second active call.
- Press and hold the rocker to hang up a call.

## Microphone Controls

You can move the microphone boom to either side to turn it on. If you have a stereo headset model, the left and right orientation of the headset adjusts automatically to match the direction of the microphone. You can move the microphone boom to the "up" or vertical position to mute the microphone.



## Removing the Earcup

You can remove an earcup from the stereo headset to keep one ear open while you drive.

**NOTE:** The removable earcup is available only on the dēzl Headset 200.


1 Press and hold the earcup release button ①.



2 Pull the earcup off of the headset.

## Pairing with Your Smartphone

You can pair your dēzl headset with your smartphone and the dēzl app. You can also pair the dēzl app with a compatible Garmin dēzl navigation device to enable advanced Garmin voice-activated navigation through your headset.

- 1 From the app store on your smartphone, install the dēzl app.
- 2 Turn on your dēzl headset, and place the headset and your smartphone within 3 m (10 ft.) of each other.
- 3 On your smartphone, open the dēzl app.
- 4 On the headset, hold  ① until the blue LED flashes.



- 5 From the dēzl app, select **Garmin dēzl Headset**.
  - 6 Follow the on-screen instructions on your smartphone to finish setting up your headset.
- The main app dashboard appears. After the devices are paired, they connect automatically when they are turned on and within range.

## Voice Assistant Features

**NOTE:** Voice assistant features are not available for all languages and regions.

Voice assistant features allow you to use your smartphone or a compatible Garmin navigation device by saying words and commands.

### Tips for Using Voice Commands

- Speak in a clear voice.
- Respond to voice prompts from the device as needed.
- If you do not receive a useful response, try rephrasing your request.

## Launching Garmin Voice-Activated Navigation

If you pair your headset with the dēzl app and a compatible dēzl navigation device, you can use Garmin voice-activated navigation features.

Garmin voice-activated navigation allows you to use plain language spoken requests to search for locations and addresses, start routes with turn-by-turn directions, and more.

- Press **GARMIN** ①, and make a spoken request.



For example, you can say phrases like these:

- *Take me home.*
- *Where's the library?*

## Placing a Phone Call Using Your Headset

You can use your headset to call a contact from the phone book of your paired smartphone.

- 1 Move the microphone to the forward position.
- 2 Press **GARMIN**.
- 3 Say *Call*, and say the contact name.  
For example, you can say *Call Mom..*

## Using the Voice Assistant on Your Smartphone

You can activate the voice assistant on your smartphone using your dēzl headset.

- Hold **GARMIN** ① for three seconds.



A tone plays and your phone's voice assistant activates.

## Settings

The settings for your dēzl device are configured using the dēzl app. Before you can configure settings, you must pair your device with the dēzl app (*Pairing with Your Smartphone, page 9*).

## Device Maintenance

### Updating the Software Using the Garmin dēzl App

When an update is available, the dēzl app sends it to the headset automatically.

The next time you start your headset, it notifies you that it is installing an update.

Do not turn off your headset while the update is installing.

After the update is complete, the headset restarts and operates normally.

### Garmin Support Center

Go to [support.garmin.com](https://support.garmin.com) for help and information, such as product manuals, frequently asked questions, videos, and customer support.

## Device Care

### **NOTICE**

Avoid extreme shock and harsh treatment, because it can degrade the life of the product.

Do not use a sharp object to clean the device.

Avoid chemical cleaners, solvents, and insect repellents that can damage plastic components and finishes.

Do not store the device where prolonged exposure to extreme temperatures can occur, because it can cause permanent damage.

## Cleaning the Outer Casing

### **NOTICE**

Avoid chemical cleaners and solvents that can damage plastic components.

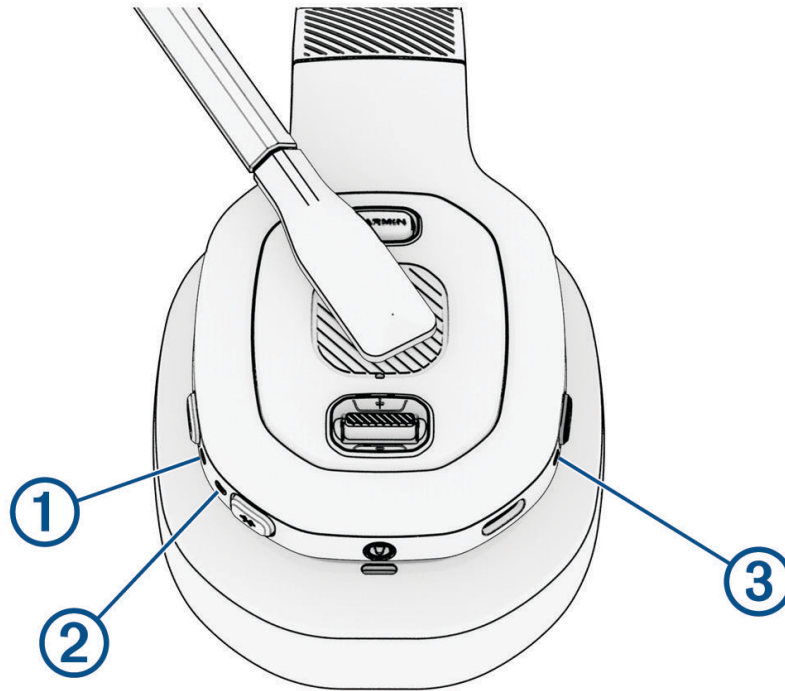
- 1 Clean the outer casing of the device using a cloth dampened with a mild detergent solution.
- 2 Wipe the device dry.



# Device Information

## Status LEDs

The ANC LED ①, the Bluetooth LED ②, and the power LED ③ show the headset status.



ANC LED Activity	Status
White	Active noise control is turned on.
Off	Active noise control is turned off.

Bluetooth LED Activity	Status
Blue	The headset is connected to a Bluetooth device.
Flashing blue	The headset is in Bluetooth pairing mode.
Off	The headset is not connected to a Bluetooth device.

Power LED Activity	Status
White	The headset is turned on and is operating normally.
Flashing green	The headset is charging.
Green	The headset is fully charged.
Red	The headset is receiving voltage that is too high from the power source or the temperature is too high for the headset to operate.
Flashing red	The headset battery is low.
Off	The headset is turned off or does not have power.

## Specifications

Operating temperature range	From -20° to 60°C (from -4° to 140°F)
Charging temperature range	From 0° to 45°C (from 32° to 113°F)
Input voltage	From 4.75 to 5.25 Vdc, 60 mA
Wireless frequency	2.4 GHz @ 8 dBm maximum

## Troubleshooting

### My headset battery does not charge

- Verify the headset is receiving power from the connected USB cable.  
The power LED flashes green while the headset is charging.
- Inspect the power LED (*Status LEDs, page 13*).  
If the LED is red, the headset is receiving voltage that is too high from the connected power source, or the headset temperature is too high to operate.

### OK Garmin voice commands do not work

If you have paired your phone and headset, but some features do not work, you can take these actions to resolve the issue.

- In the app store on your smartphone, update the dēzl app to the most recent version.
- Verify the dēzl app on your smartphone is paired with both your headset and a compatible dēzl navigation device.

### Left and right audio channels are reversed


The dēzl headset determines the orientation of the audio channels automatically based on the last position of the microphone boom.

Turn on the headset, and move the microphone boom to the forward position.

The audio channels reset automatically.

### Resetting the Headset to Factory Default Settings

You can reset your headset to the factory default settings. Resetting clears all data from the headset.

- 1 Turn on the headset.
- 2 Hold **GARMIN** and  for five seconds.

The LEDs flash while the headset resets.



