

Internal photographs of equipment under test
Inside

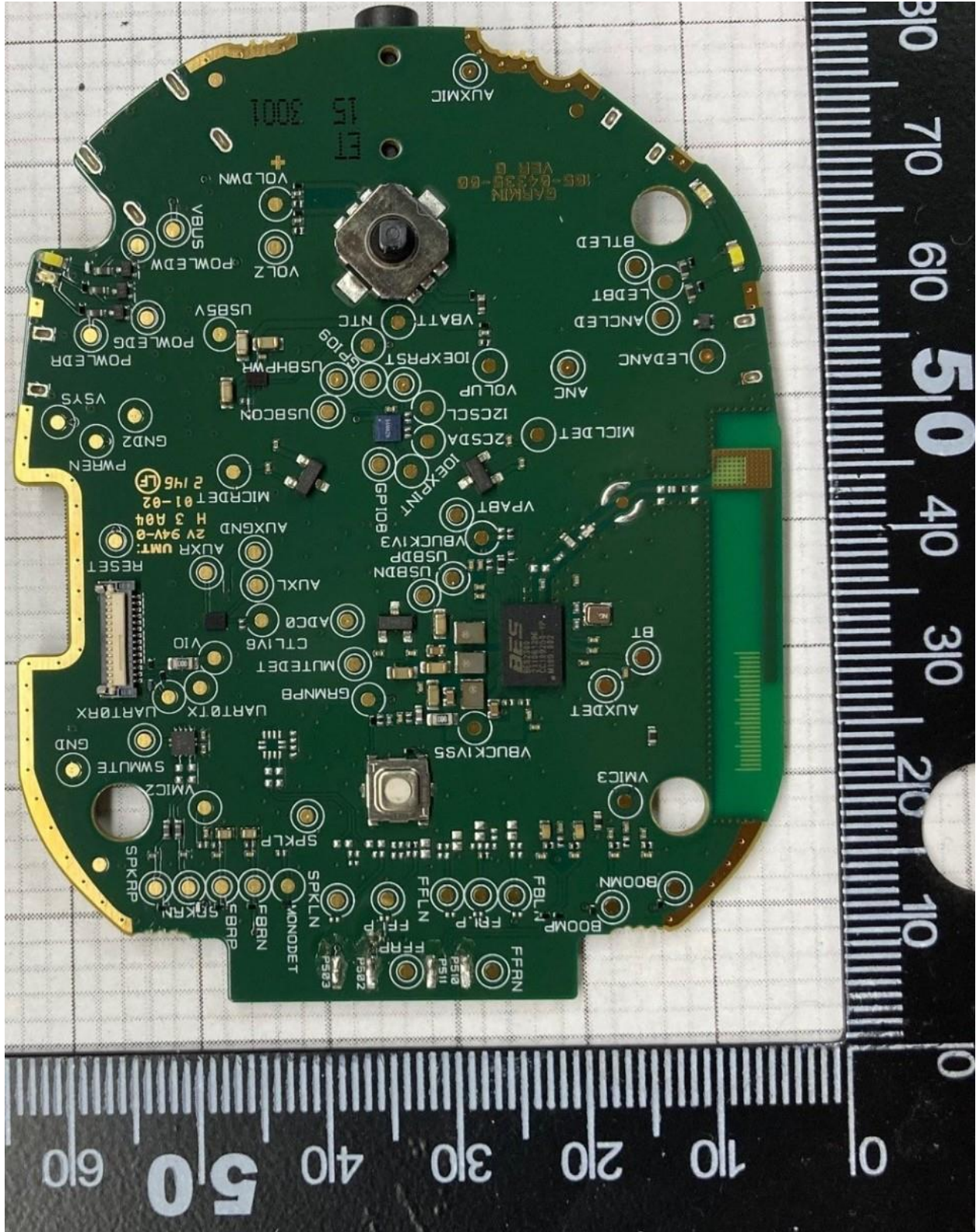


Rogers Labs, Inc.
4405 West 259th Terrace
Louisburg, KS 66053
Phone/Fax: (913) 837-3214
Revision 1

Garmin International, Inc.
HVIN: A04335
Test: 211207
Test to: CFR47 15C, RSS-210
File: A04335 Short Term Conf IntPho

SN's: 3392301678, 3392301718
FCC ID: IPH-04335
IC: 1792A-04335
Date: January 31, 2022
Page 1 of 4

Front

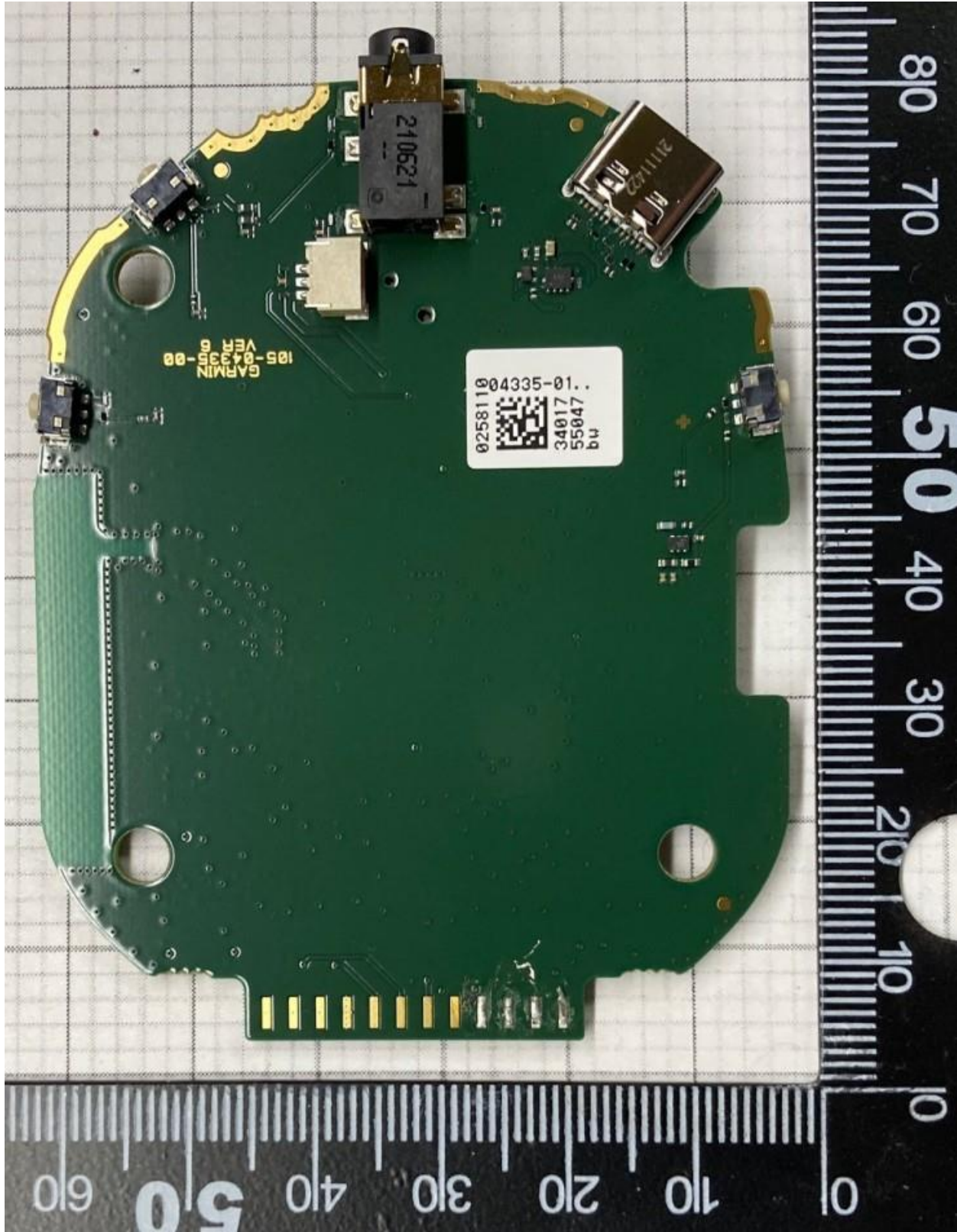


Rogers Labs, Inc.
4405 West 259th Terrace
Louisburg, KS 66053
Phone/Fax: (913) 837-3214
Revision 1

Garmin International, Inc.
HVIN: A04335
Test: 211207
Test to: CFR47 15C, RSS-210
File: A04335 Short Term Conf IntPho

SN's: 3392301678, 3392301718
FCC ID: IPH-04335
IC: 1792A-04335
Date: January 31, 2022
Page 2 of 4

Back

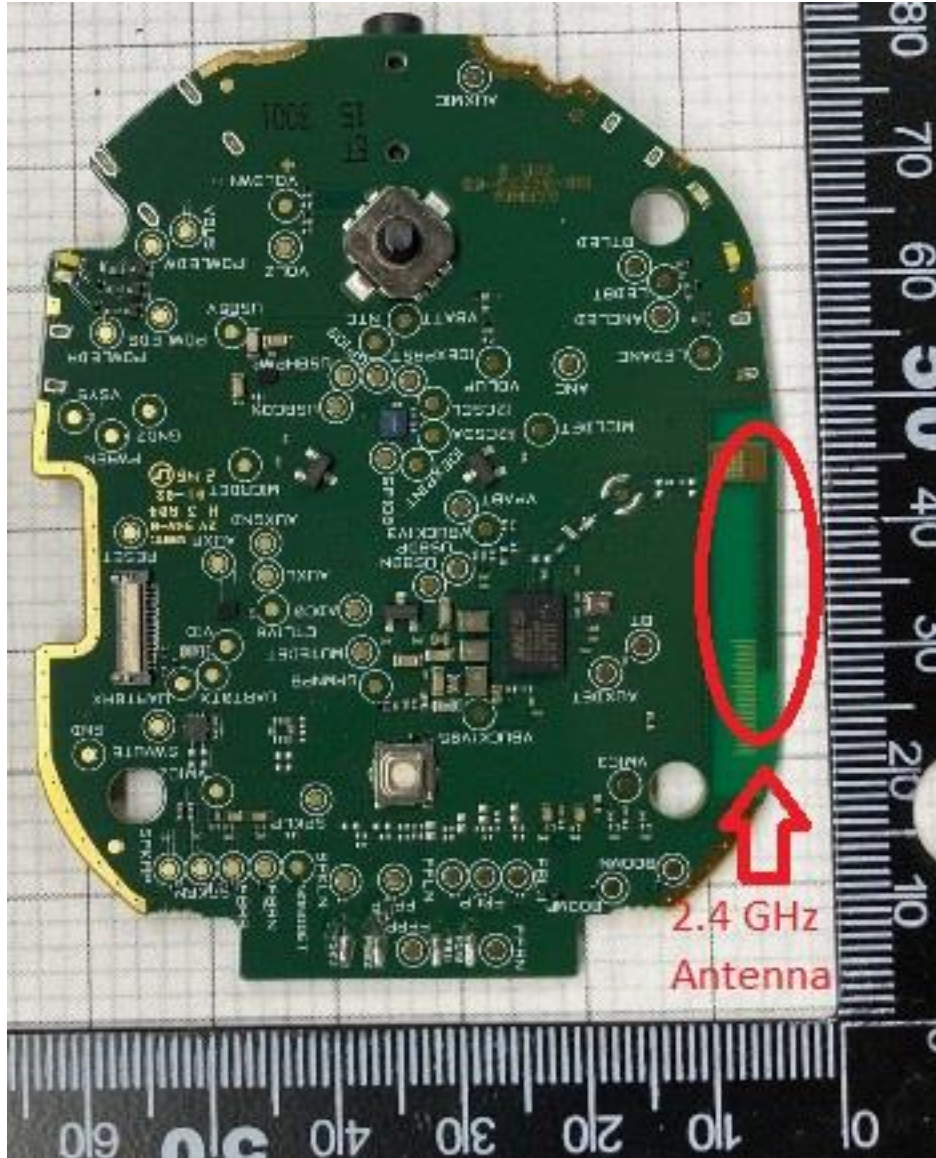


Rogers Labs, Inc.
4405 West 259th Terrace
Louisburg, KS 66053
Phone/Fax: (913) 837-3214
Revision 1

Garmin International, Inc.
HVIN: A04335
Test: 211207
Test to: CFR47 15C, RSS-210
File: A04335 Short Term Conf IntPho

SN's: 3392301678, 3392301718
FCC ID: IPH-04335
IC: 1792A-04335
Date: January 31, 2022
Page 3 of 4

Antenna Locations



Rogers Labs, Inc.
4405 West 259th Terrace
Louisburg, KS 66053
Phone/Fax: (913) 837-3214
Revision 1

Garmin International, Inc.
HVIN: A04335
Test: 211207
Test to: CFR47 15C, RSS-210
File: A04335 Short Term Conf IntPho

SN's: 3392301678, 3392301718
FCC ID: IPH-04335
IC: 1792A-04335
Date: January 31, 2022
Page 4 of 4