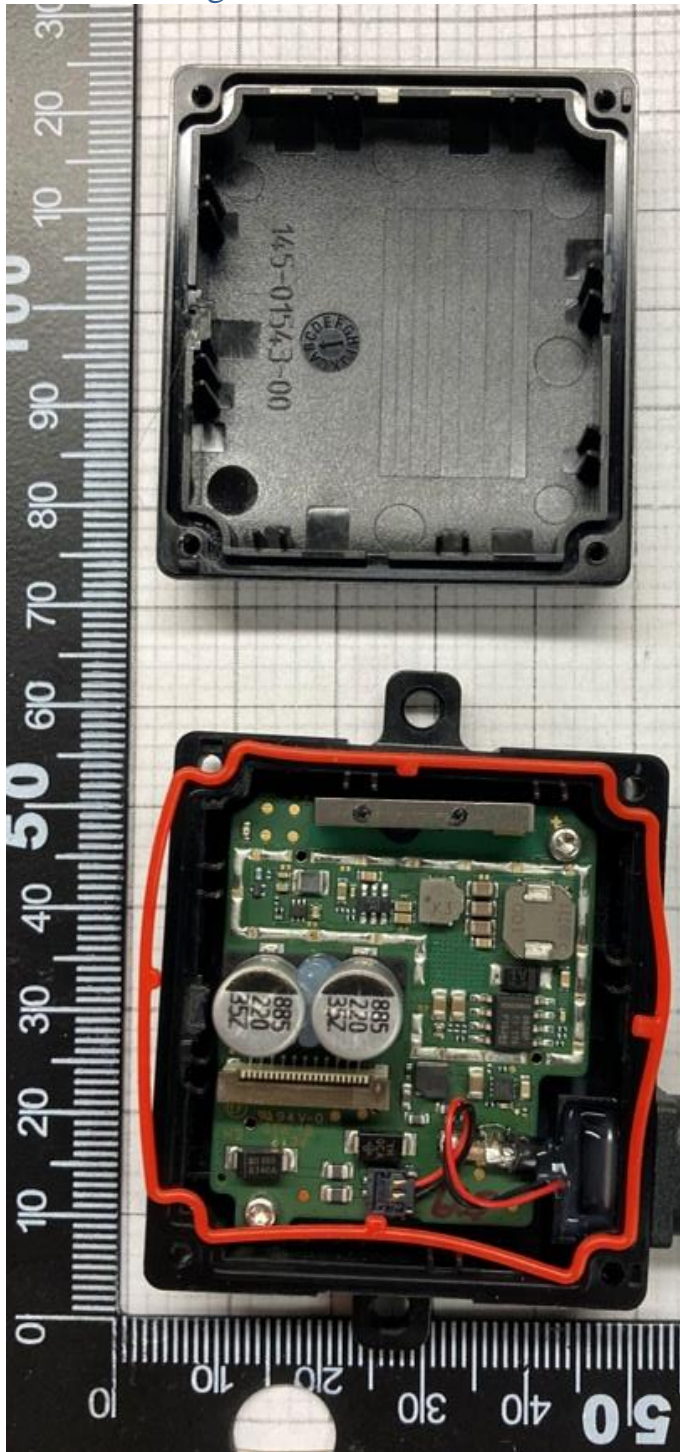


Internal photographs of equipment under test

Inside housing

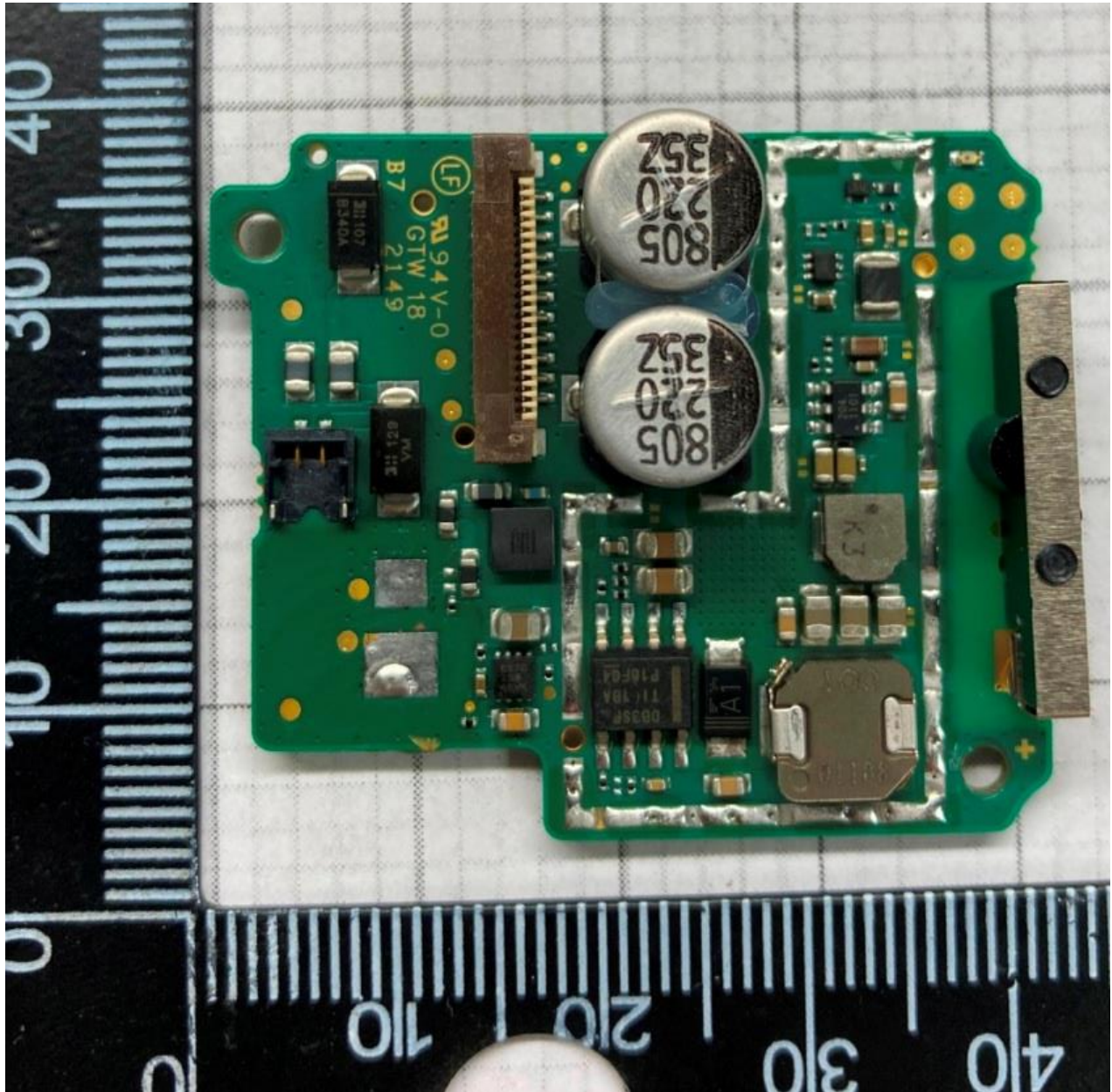


Rogers Labs, Inc.
4405 West 259th Terrace
Louisburg, KS 66053
Phone/Fax: (913) 837-3214
Revision 1

Garmin International, Inc.
HVIN: A04326
Test: 211130
Test to: CFR47 15C, RSS-210
File: A04326 Short Term Conf IntPho

SN's: 3390035976, 7CA000030
FCC ID: IPH-04326
IC: 1792A-04326
Date: February 21, 2022
Page 1 of 4

Top side of PCB

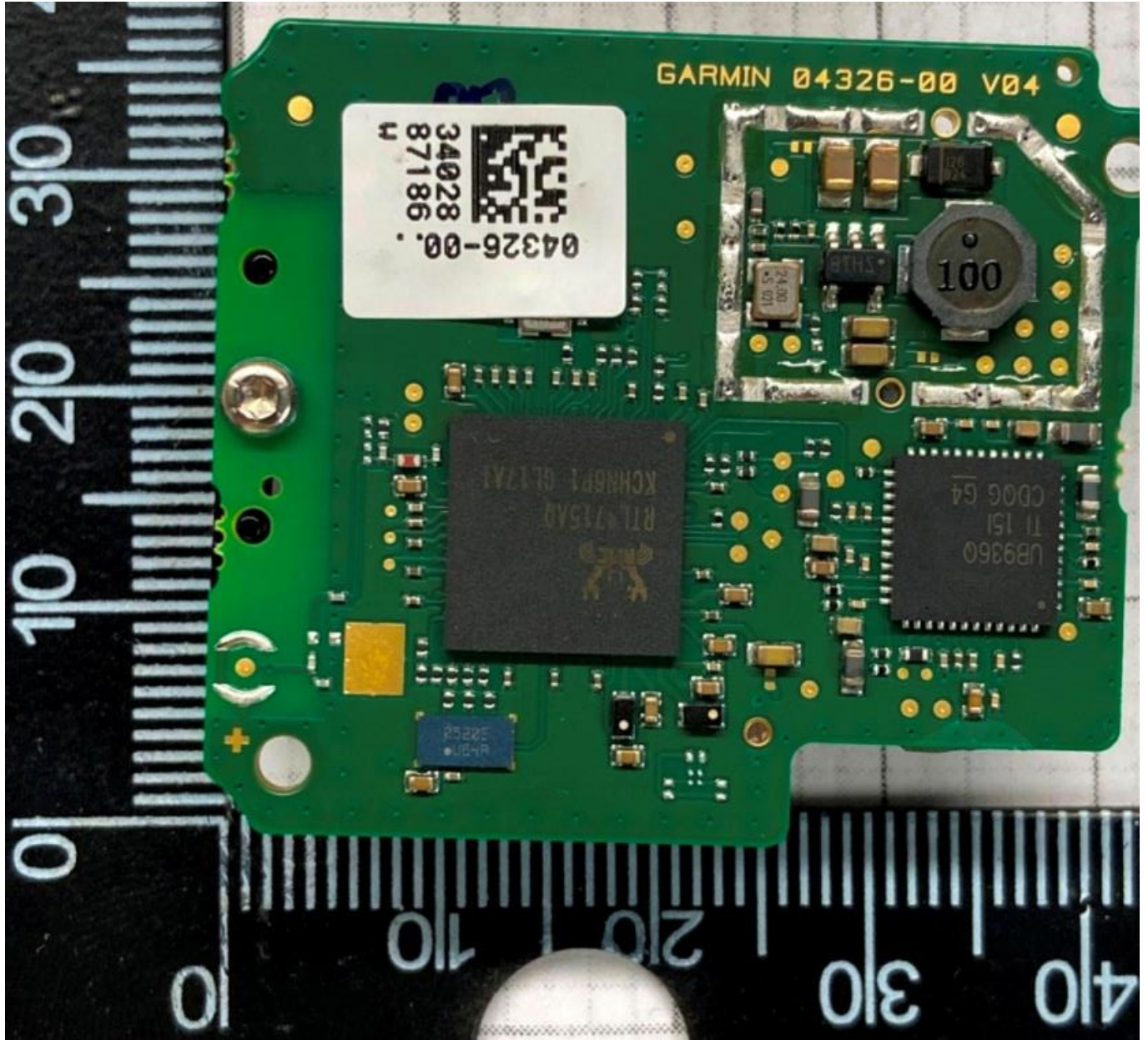


Rogers Labs, Inc.
4405 West 259th Terrace
Louisburg, KS 66053
Phone/Fax: (913) 837-3214
Revision 1

Garmin International, Inc.
HVIN: A04326
Test: 211130
Test to: CFR47 15C, RSS-210
File: A04326 Short Term Conf IntPho

SN's: 3390035976, 7CA000030
FCC ID: IPH-04326
IC: 1792A-04326
Date: February 21, 2022
Page 2 of 4

Bottom side of PCB

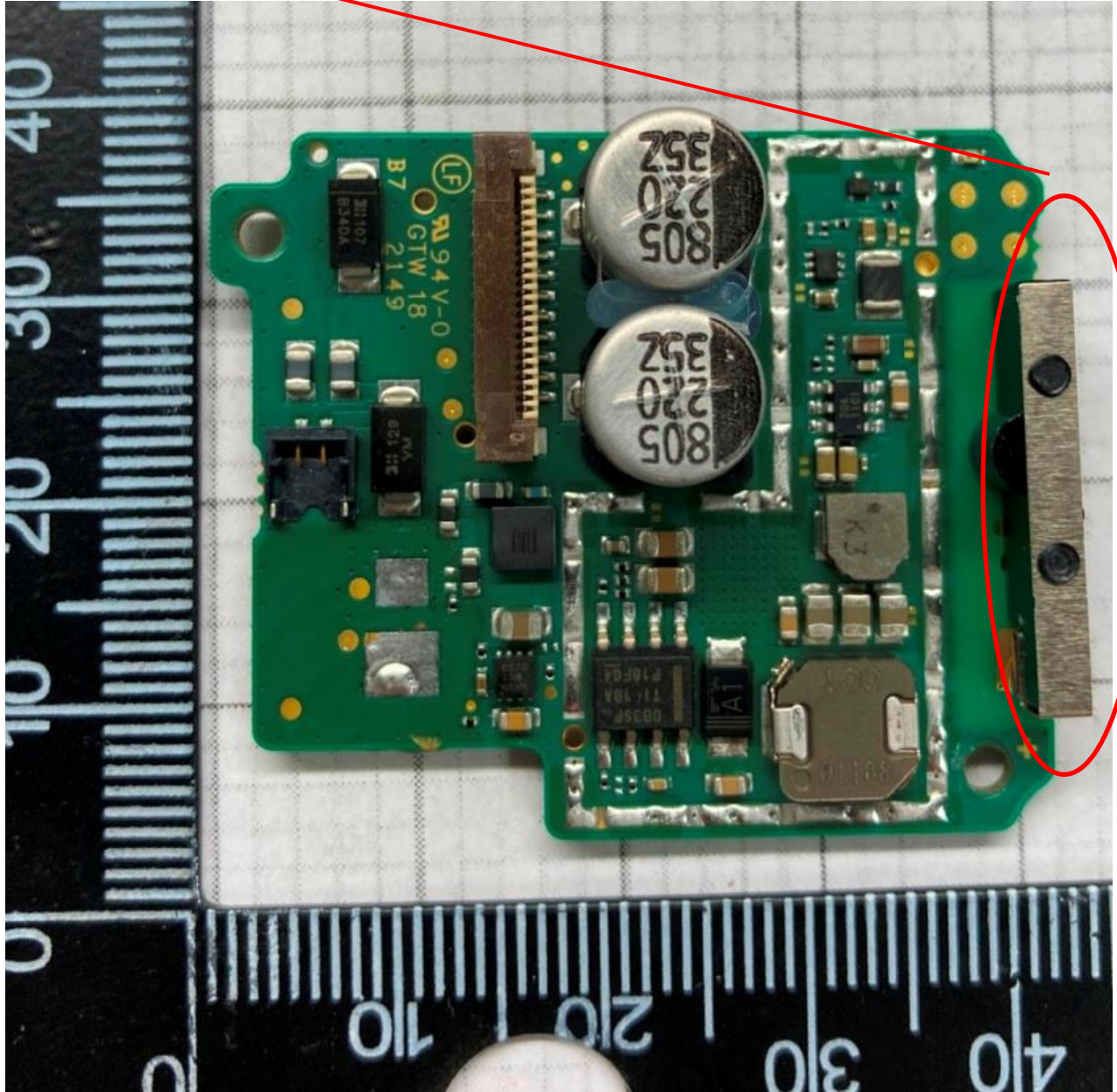


Rogers Labs, Inc.
4405 West 259th Terrace
Louisburg, KS 66053
Phone/Fax: (913) 837-3214
Revision 1

Garmin International, Inc.
HVIN: A04326
Test: 211130
Test to: CFR47 15C, RSS-210
File: A04326 Short Term Conf IntPho

SN's: 3390035976, 7CA000030
FCC ID: IPH-04326
IC: 1792A-04326
Date: February 21, 2022
Page 3 of 4

Antenna Location



Rogers Labs, Inc.
4405 West 259th Terrace
Louisburg, KS 66053
Phone/Fax: (913) 837-3214
Revision 1

Garmin International, Inc.
HVIN: A04326
Test: 211130
Test to: CFR47 15C, RSS-210
File: A04326 Short Term Conf IntPho

SN's: 3390035976, 7CA000030
FCC ID: IPH-04326
IC: 1792A-04326
Date: February 21, 2022
Page 4 of 4