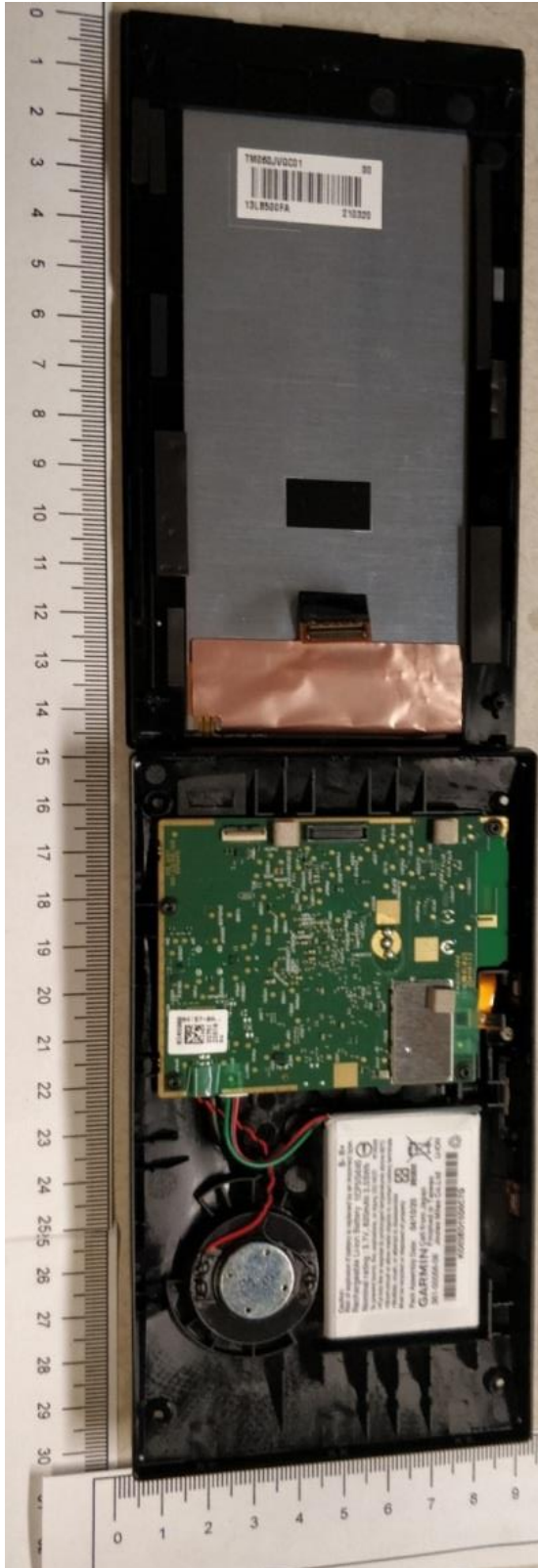


Internal photographs of equipment under test  
Inside enclosure

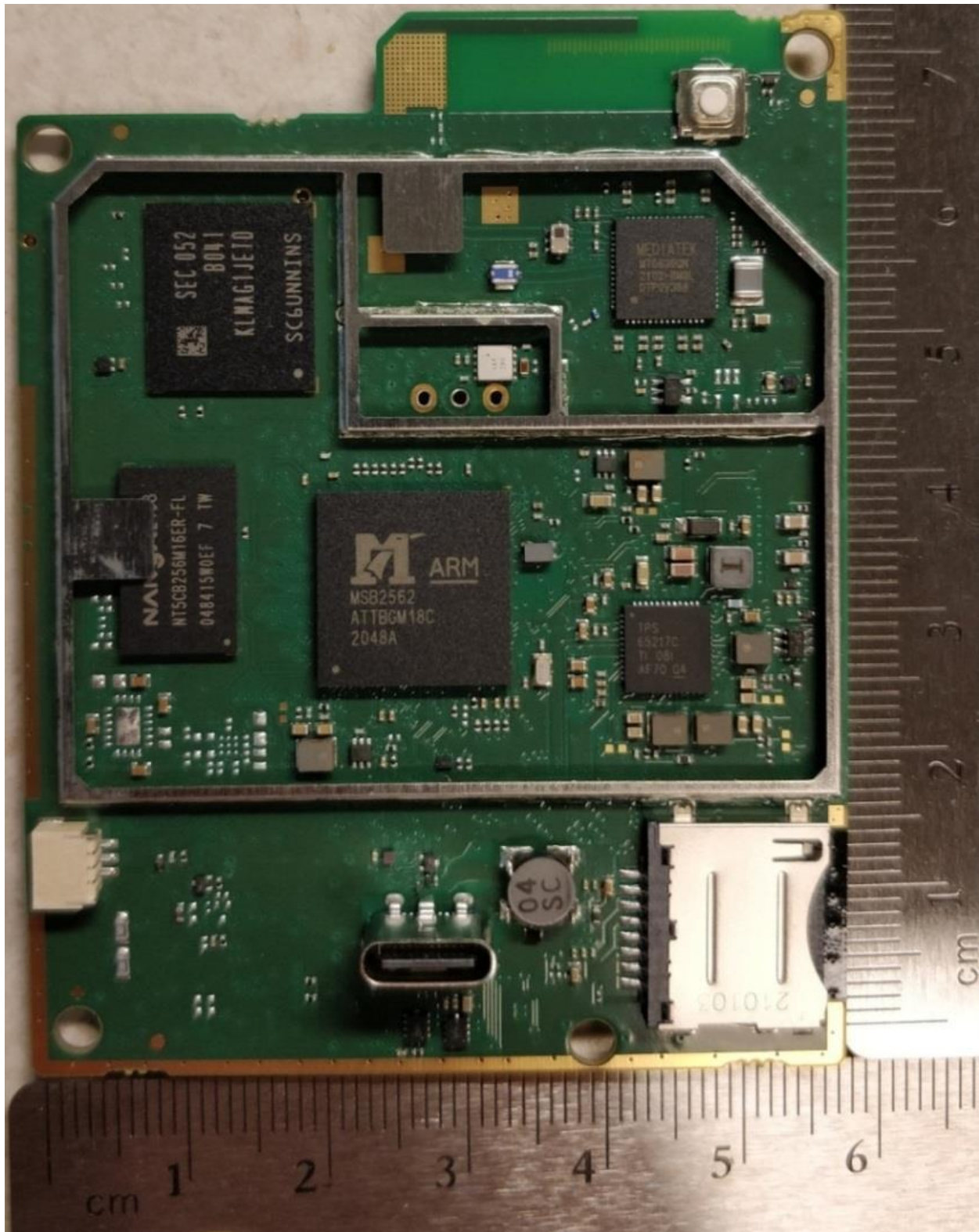


Rogers Labs, Inc.  
4405 West 259<sup>th</sup> Terrace  
Louisburg, KS 66053  
Phone/Fax: (913) 837-3214  
Revision 1

Garmin International, Inc.  
Model: A04157  
Test: 210306  
Test to: CFR47 15C, RSS-210, RSS-247  
File: A04157 Short Term Conf IntPho

SN's: 3355223219 / 3355223241  
FCC ID: IPH-04157  
IC: 1792A-04157  
Date: June 22, 2021  
Page 1 of 5

Back Side without Shield



Rogers Labs, Inc.  
4405 West 259<sup>th</sup> Terrace  
Louisburg, KS 66053  
Phone/Fax: (913) 837-3214  
Revision 1

Garmin International, Inc.  
Model: A04157  
Test: 210306  
Test to: CFR47 15C, RSS-210, RSS-247  
File: A04157 Short Term Conf IntPho

SN's: 3355223219 / 3355223241  
FCC ID: IPH-04157  
IC: 1792A-04157  
Date: June 22, 2021  
Page 2 of 5

Back Side with Shield and 2.4 GHz Antenna



Rogers Labs, Inc.  
4405 West 259<sup>th</sup> Terrace  
Louisburg, KS 66053  
Phone/Fax: (913) 837-3214  
Revision 1

Garmin International, Inc.  
Model: A04157  
Test: 210306  
Test to: CFR47 15C, RSS-210, RSS-247  
File: A04157 Short Term Conf IntPho

SN's: 3355223219 / 3355223241  
FCC ID: IPH-04157  
IC: 1792A-04157  
Date: June 22, 2021  
Page 3 of 5



Front with shield and 5 GHz antenna



Rogers Labs, Inc.  
4405 West 259<sup>th</sup> Terrace  
Louisburg, KS 66053  
Phone/Fax: (913) 837-3214  
Revision 1

Garmin International, Inc.  
Model: A04157  
Test: 210306  
Test to: CFR47 15C, RSS-210, RSS-247  
File: A04157 Short Term Conf IntPho

SN's: 3355223219 / 3355223241  
FCC ID: IPH-04157  
IC: 1792A-04157  
Date: June 22, 2021  
Page 5 of 5