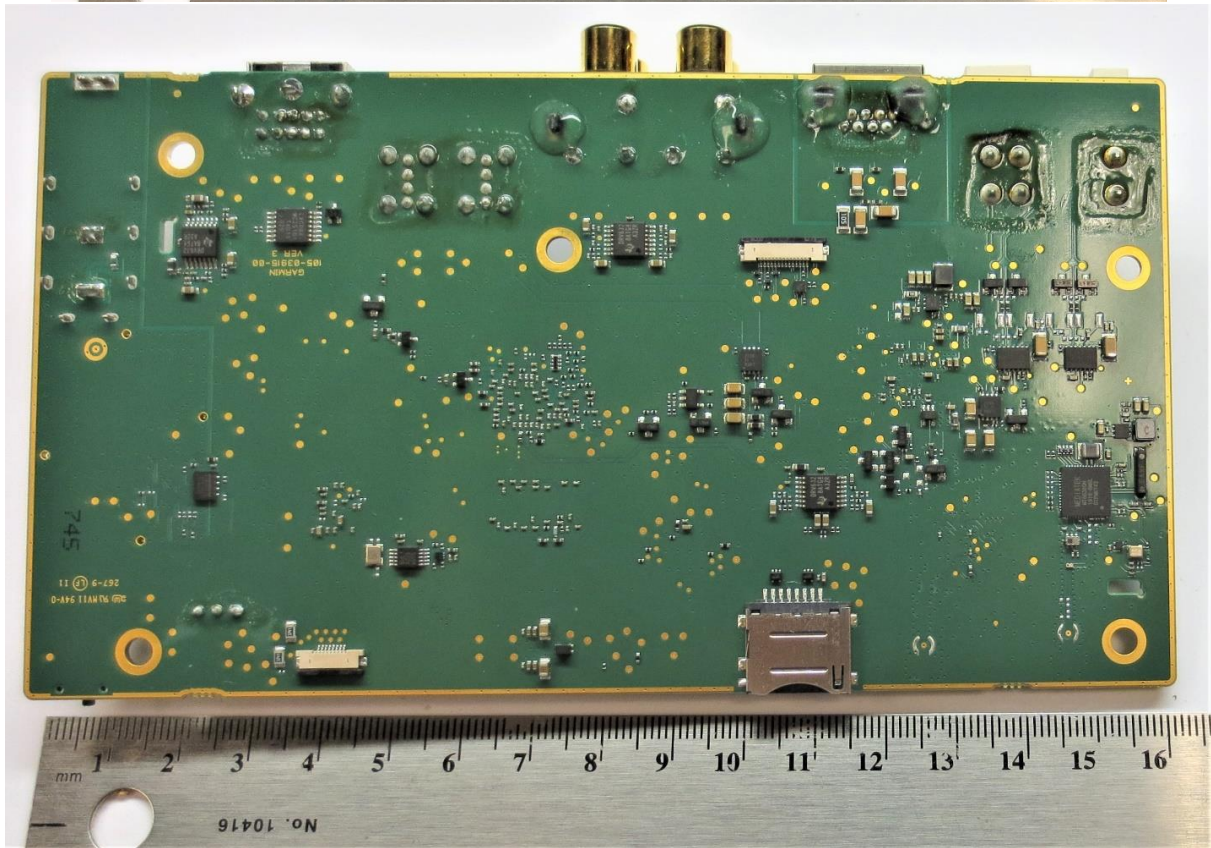
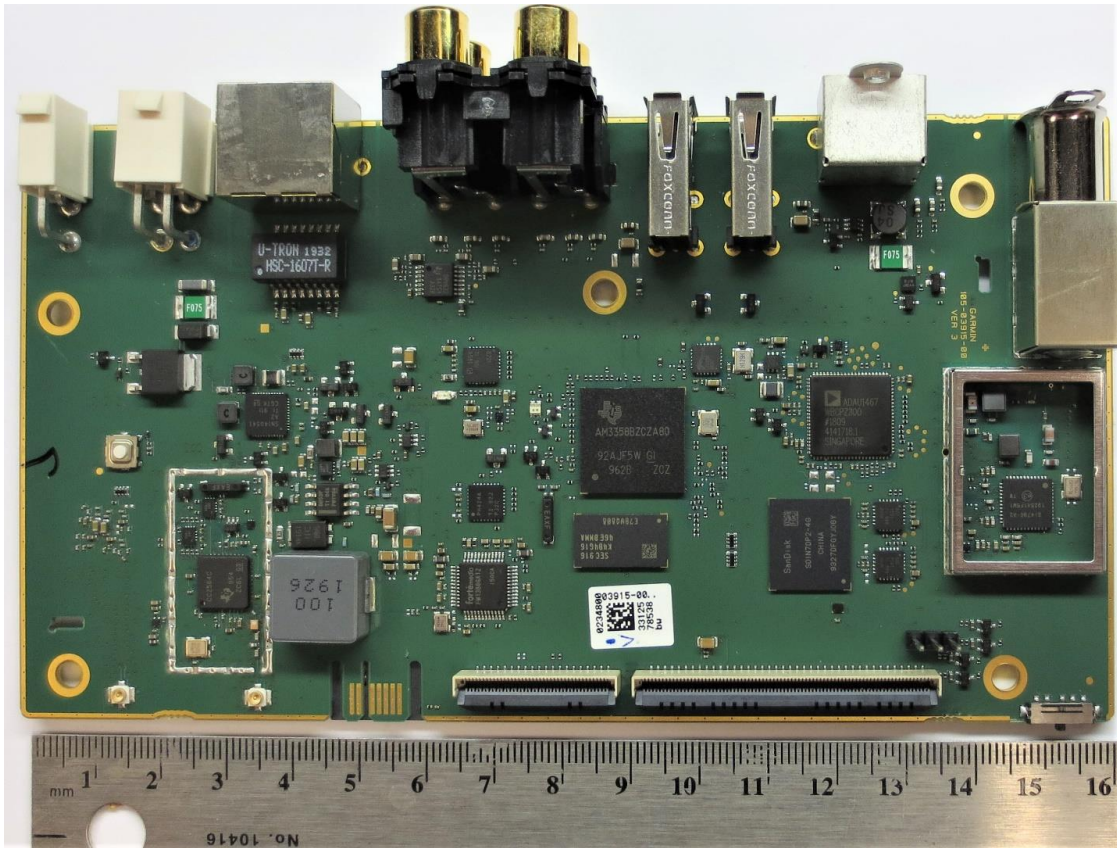


012-03915-00 Linux Board

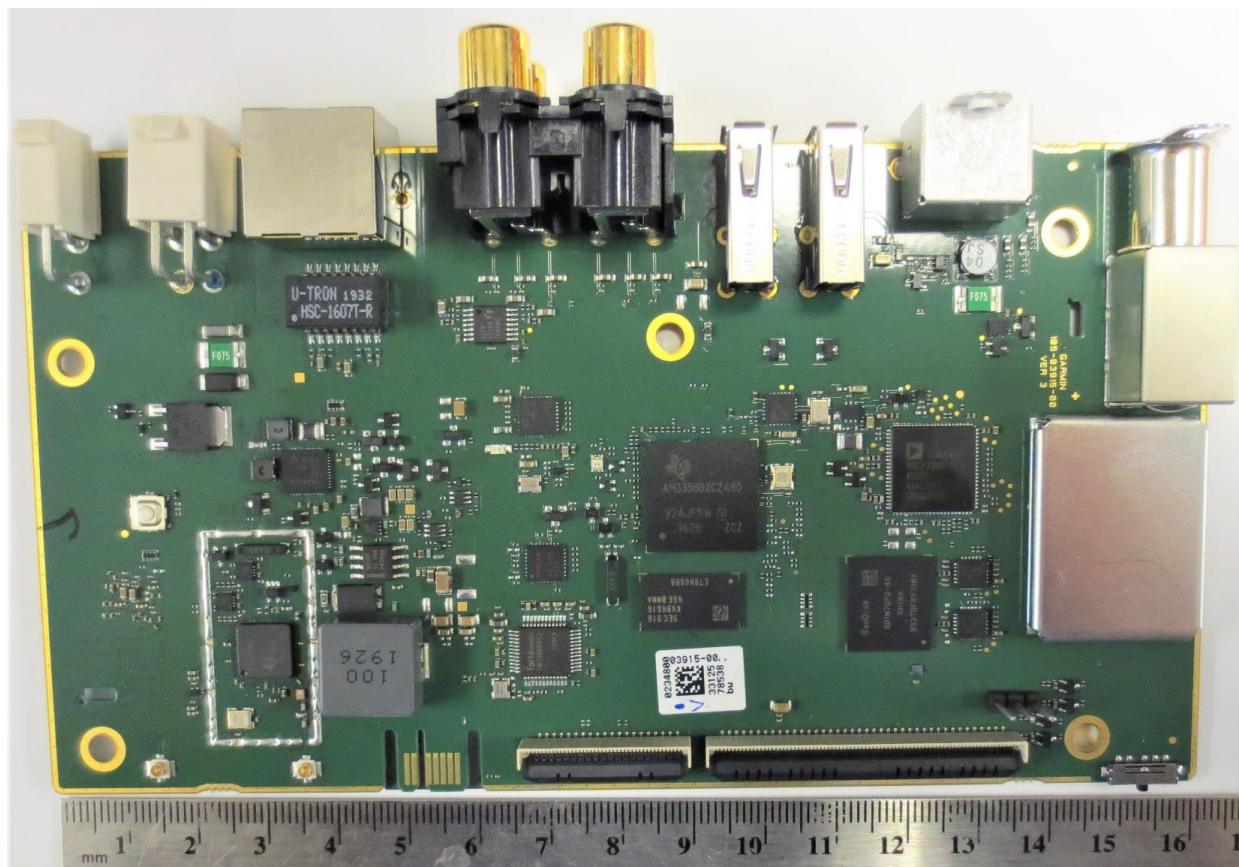


Rogers Labs, Inc.
4405 West 259th Terrace
Louisburg, KS 66053
Phone/Fax: (913) 837-3214
Revision 1

Garmin International, Inc.
Model: A03915
Test: 191105
Test to: CFR47 15C, RSS-210, RSS-247
File: A03915 Short Term Conf IntPho

SN's: 3303700951, 3303700953
FCC ID: IPH-03915
IC: 1792A-03915
Date: March 20, 2020
Page 1 of 8

012-03915-00 Linux Board with shield installed

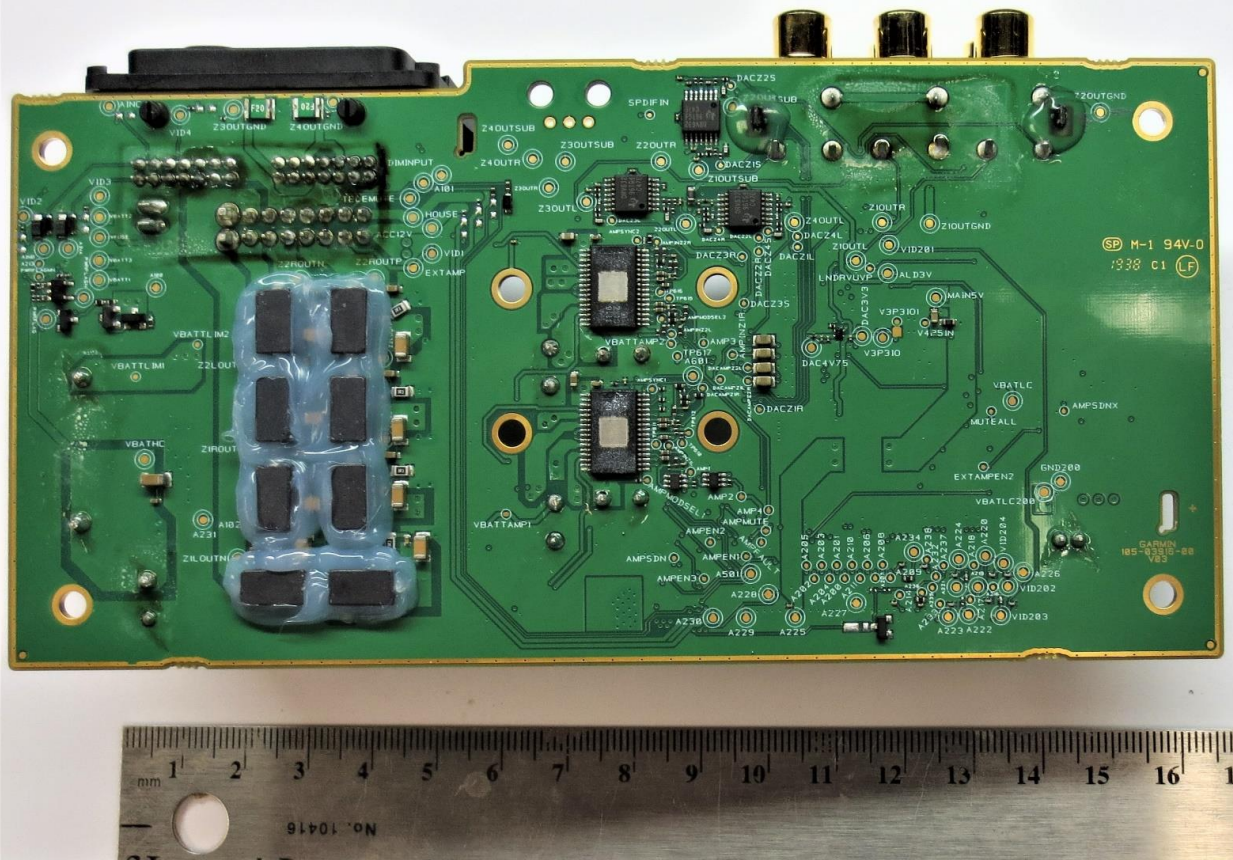
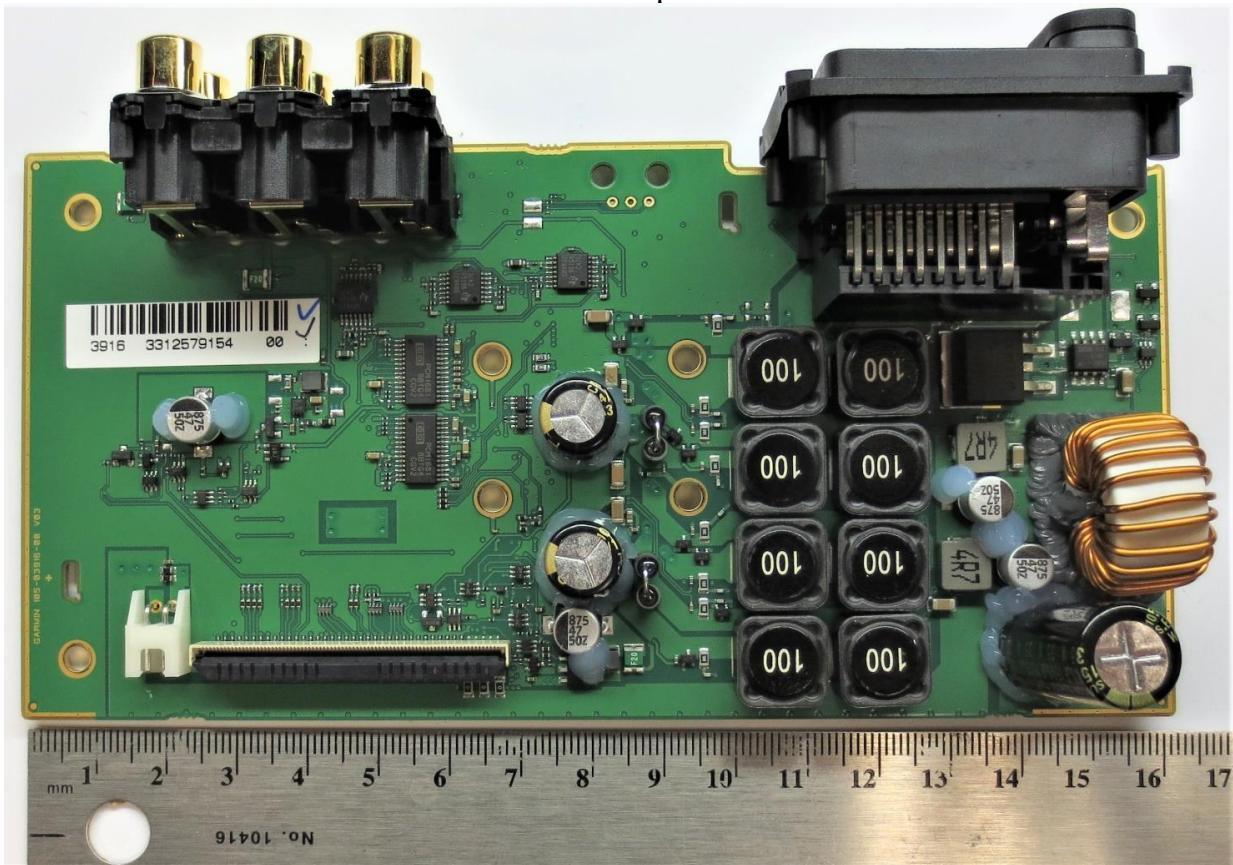


Rogers Labs, Inc.
4405 West 259th Terrace
Louisburg, KS 66053
Phone/Fax: (913) 837-3214
Revision 1

Garmin International, Inc.
Model: A03915
Test: 191105
Test to: CFR47 15C, RSS-210, RSS-247
File: A03915 Short Term Conf IntPho

SN's: 3303700951, 3303700953
FCC ID: IPH-03915
IC: 1792A-03915
Date: March 20, 2020
Page 2 of 8

012-03916-00 Amplifier Board

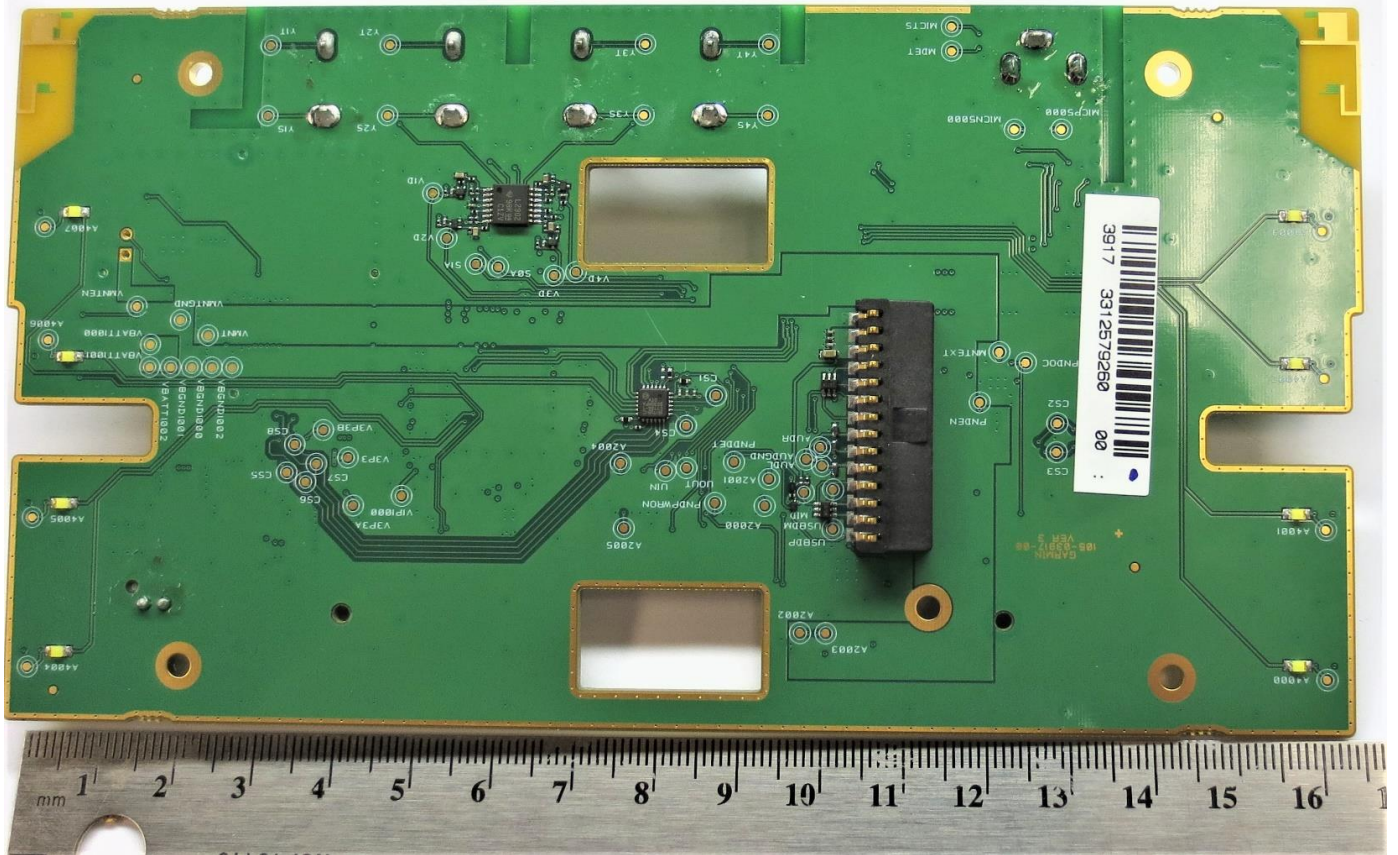
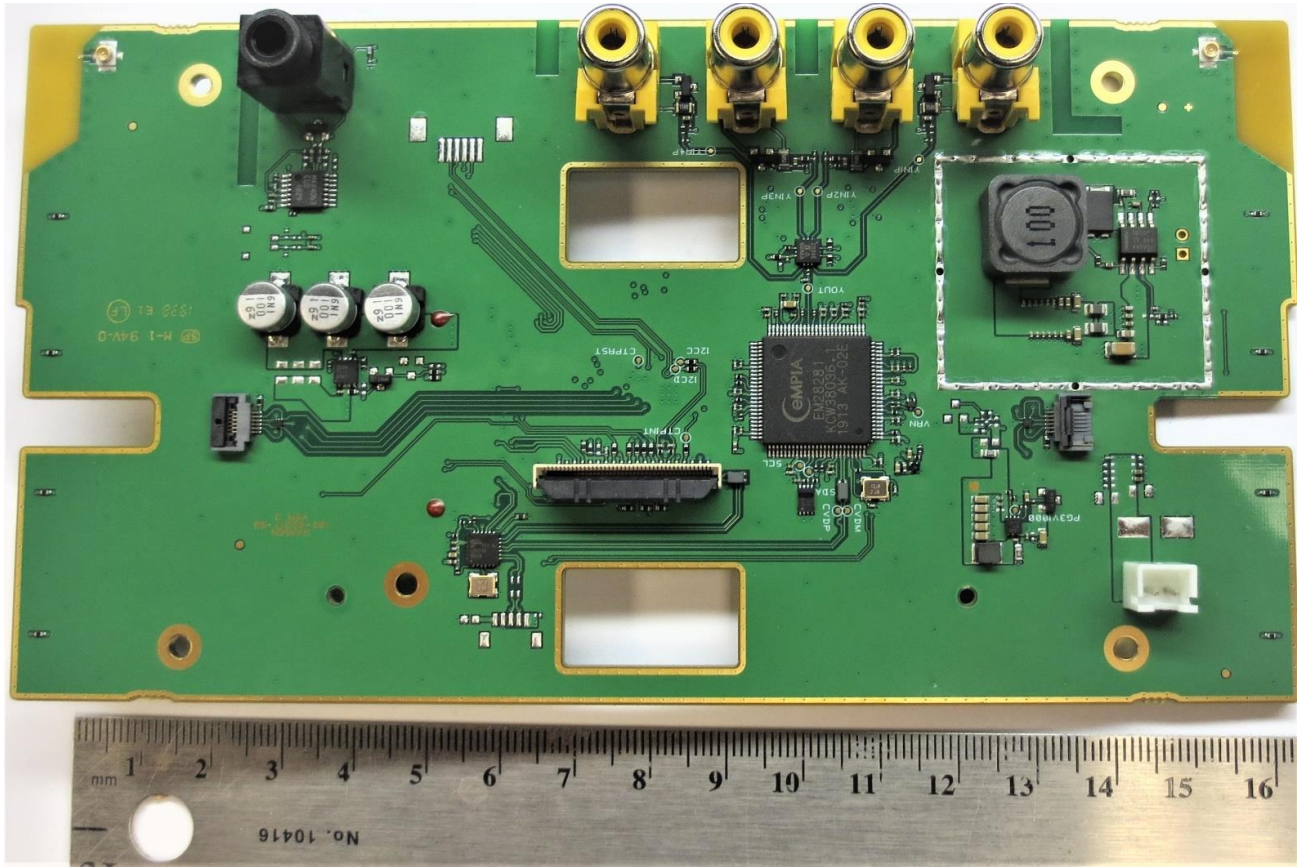


Rogers Labs, Inc.
 4405 West 259th Terrace
 Louisburg, KS 66053
 Phone/Fax: (913) 837-3214
 Revision 1

Garmin International, Inc.
 Model: A03915
 Test: 191105
 Test to: CFR47 15C, RSS-210, RSS-247
 File: A03915 Short Term Conf IntPho

SN's: 3303700951, 3303700953
 FCC ID: IPH-03915
 IC: 1792A-03915
 Date: March 20, 2020
 Page 3 of 8

012-03917-00 Mount Front Board

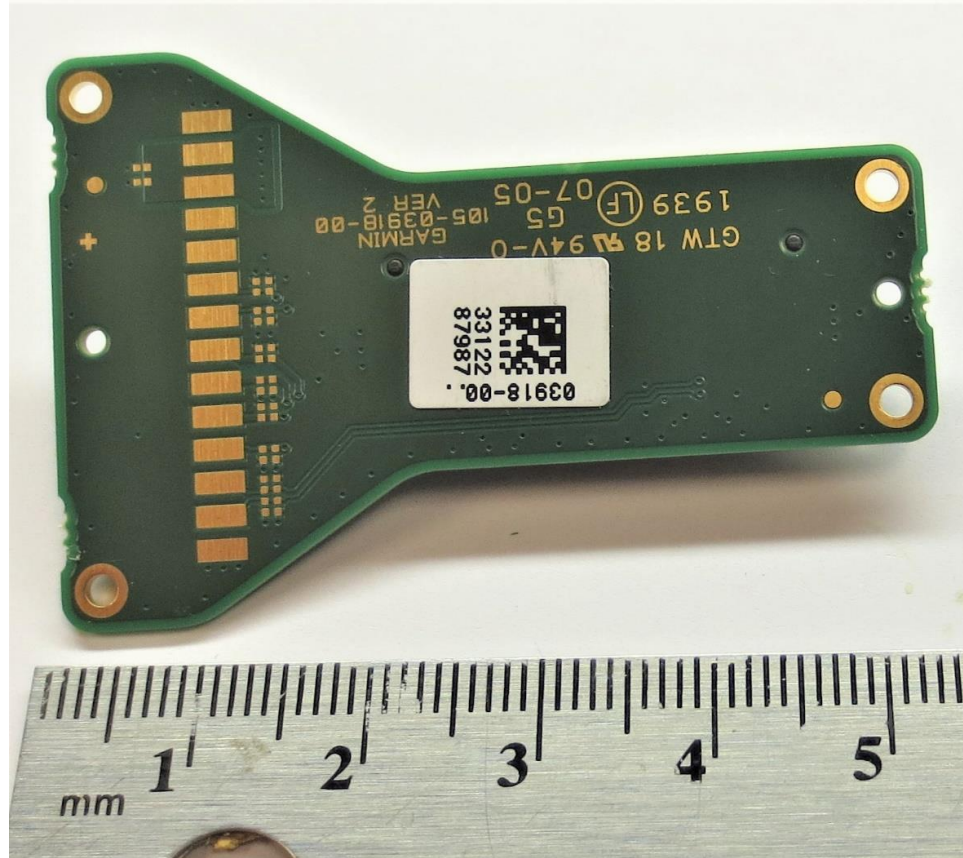
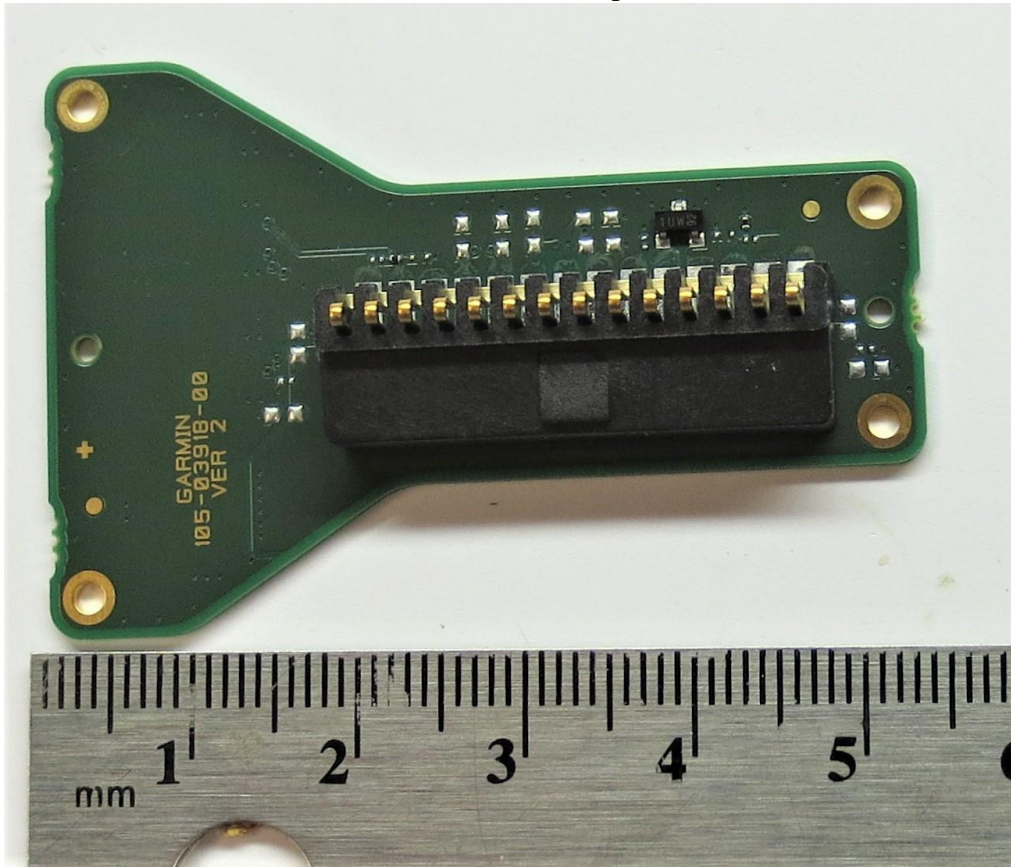


Rogers Labs, Inc.
 4405 West 259th Terrace
 Louisburg, KS 66053
 Phone/Fax: (913) 837-3214
 Revision 1

Garmin International, Inc.
 Model: A03915
 Test: 191105
 Test to: CFR47 15C, RSS-210, RSS-247
 File: A03915 Short Term Conf IntPho

SN's: 3303700951, 3303700953
 FCC ID: IPH-03915
 IC: 1792A-03915
 Date: March 20, 2020
 Page 4 of 8

012-03918-00 Mount Adapter Board

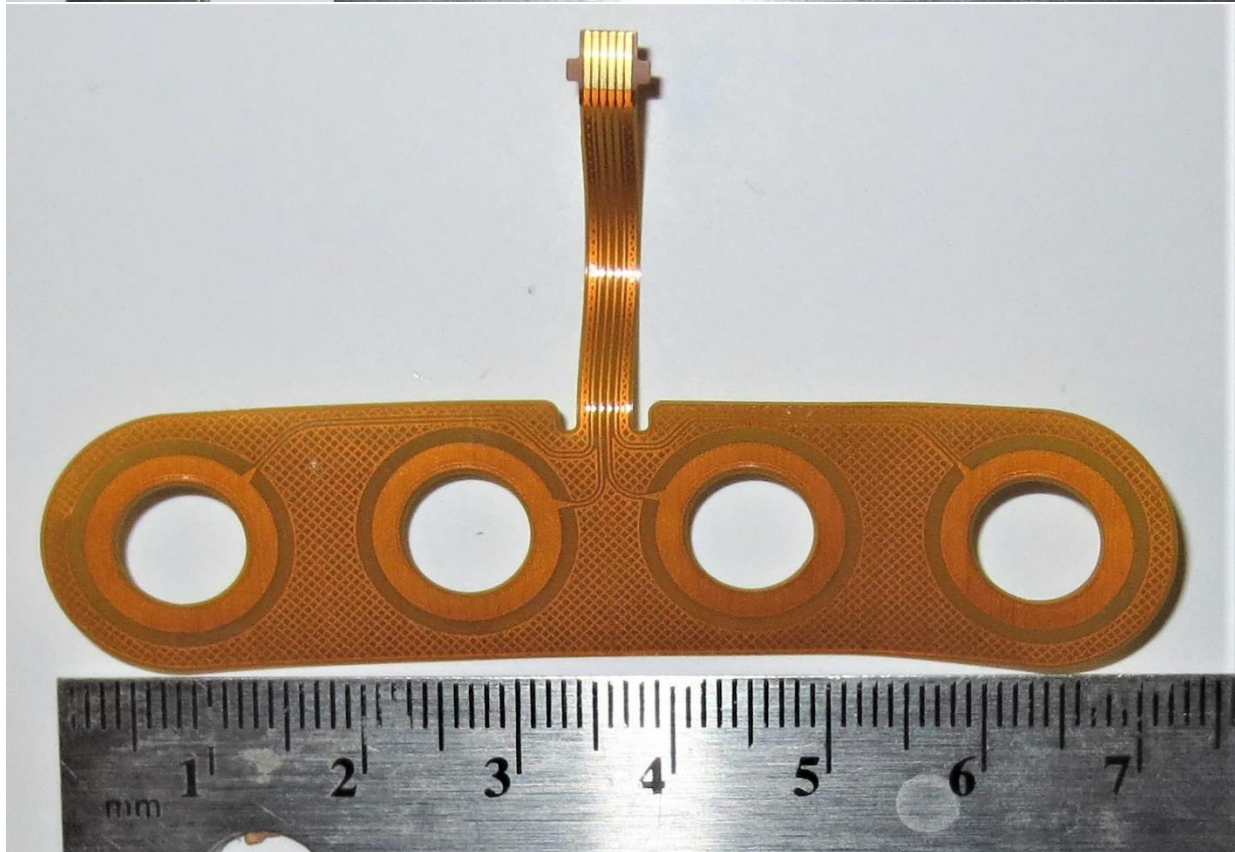
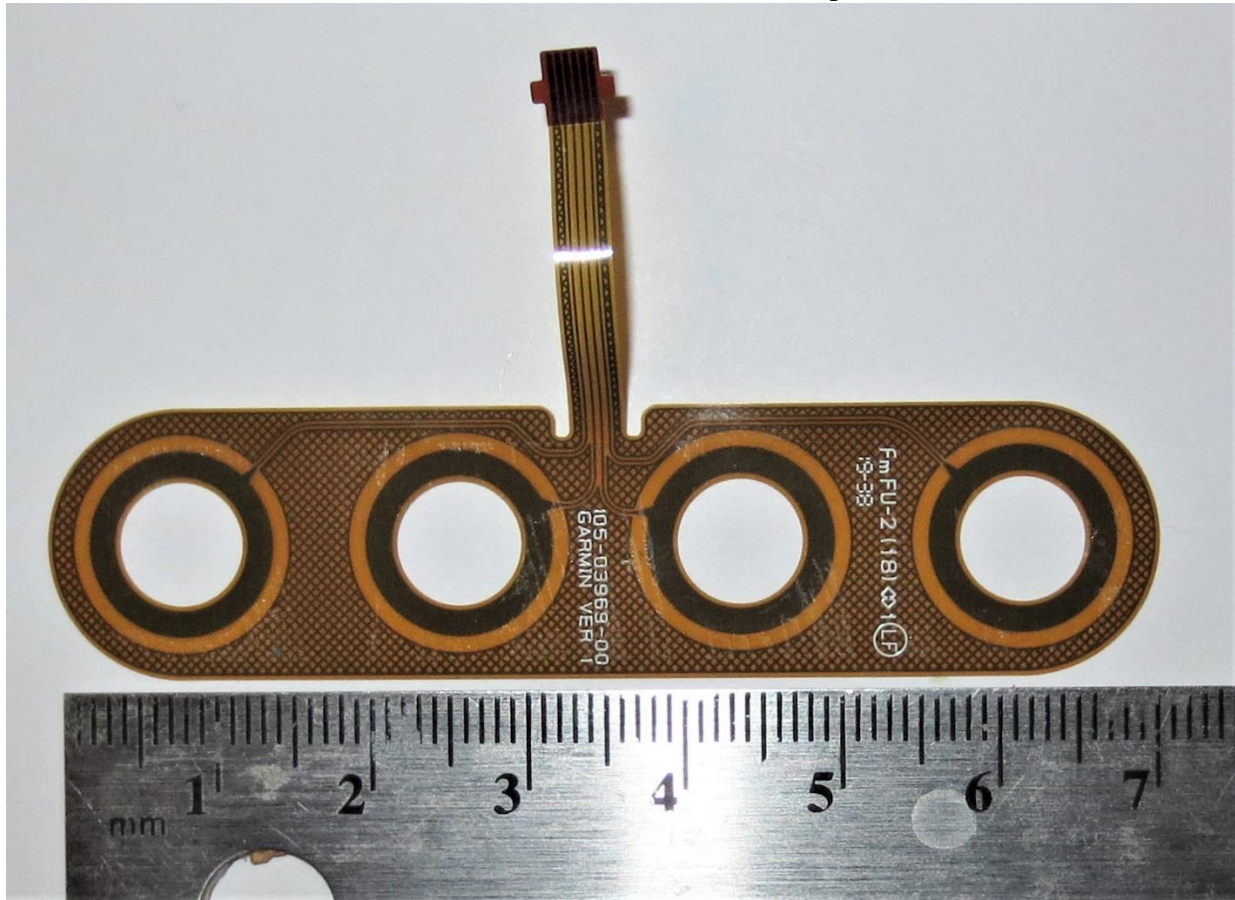


Rogers Labs, Inc.
4405 West 259th Terrace
Louisburg, KS 66053
Phone/Fax: (913) 837-3214
Revision 1

Garmin International, Inc.
Model: A03915
Test: 191105
Test to: CFR47 15C, RSS-210, RSS-247
File: A03915 Short Term Conf IntPho

SN's: 3303700951, 3303700953
FCC ID: IPH-03915
IC: 1792A-03915
Date: March 20, 2020
Page 5 of 8

105-03969-00 Touch Button FPC (two places)

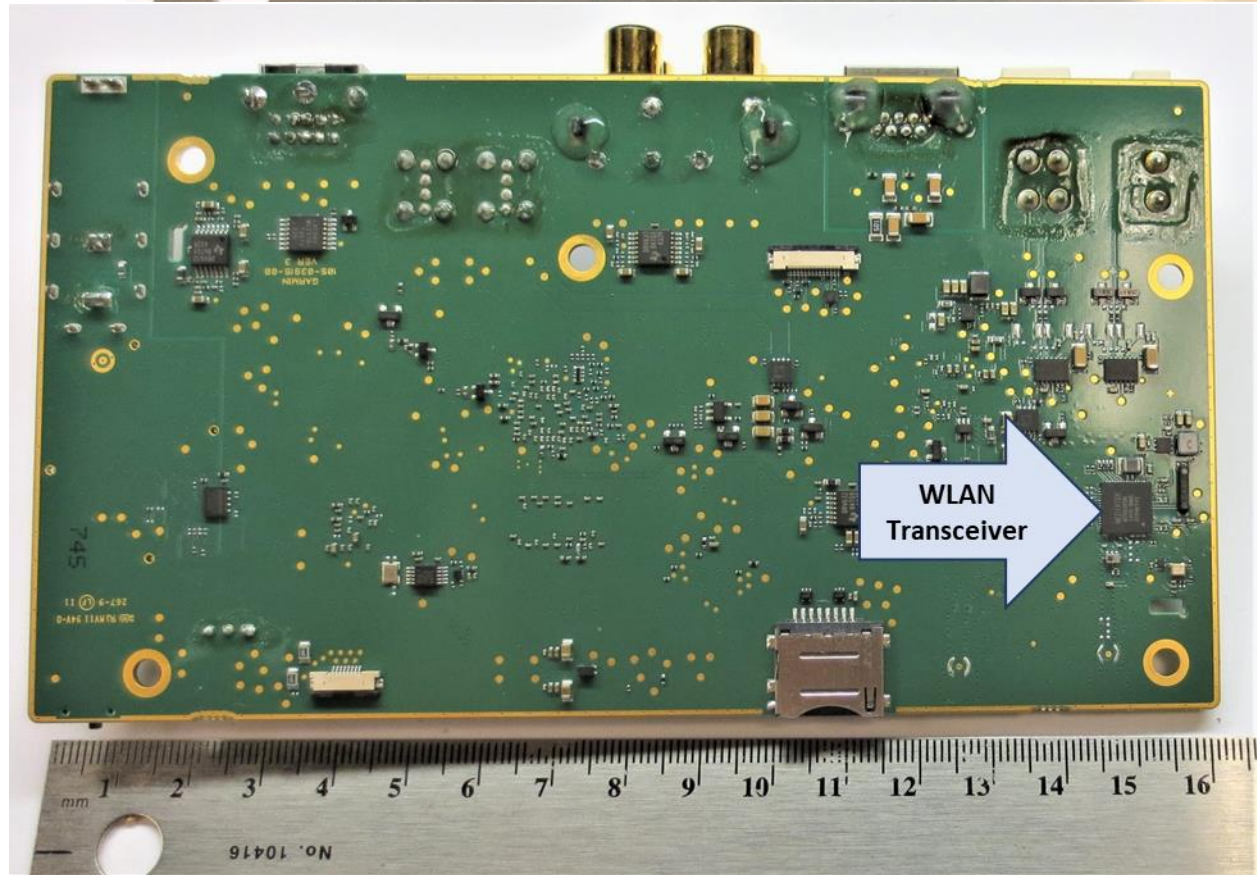
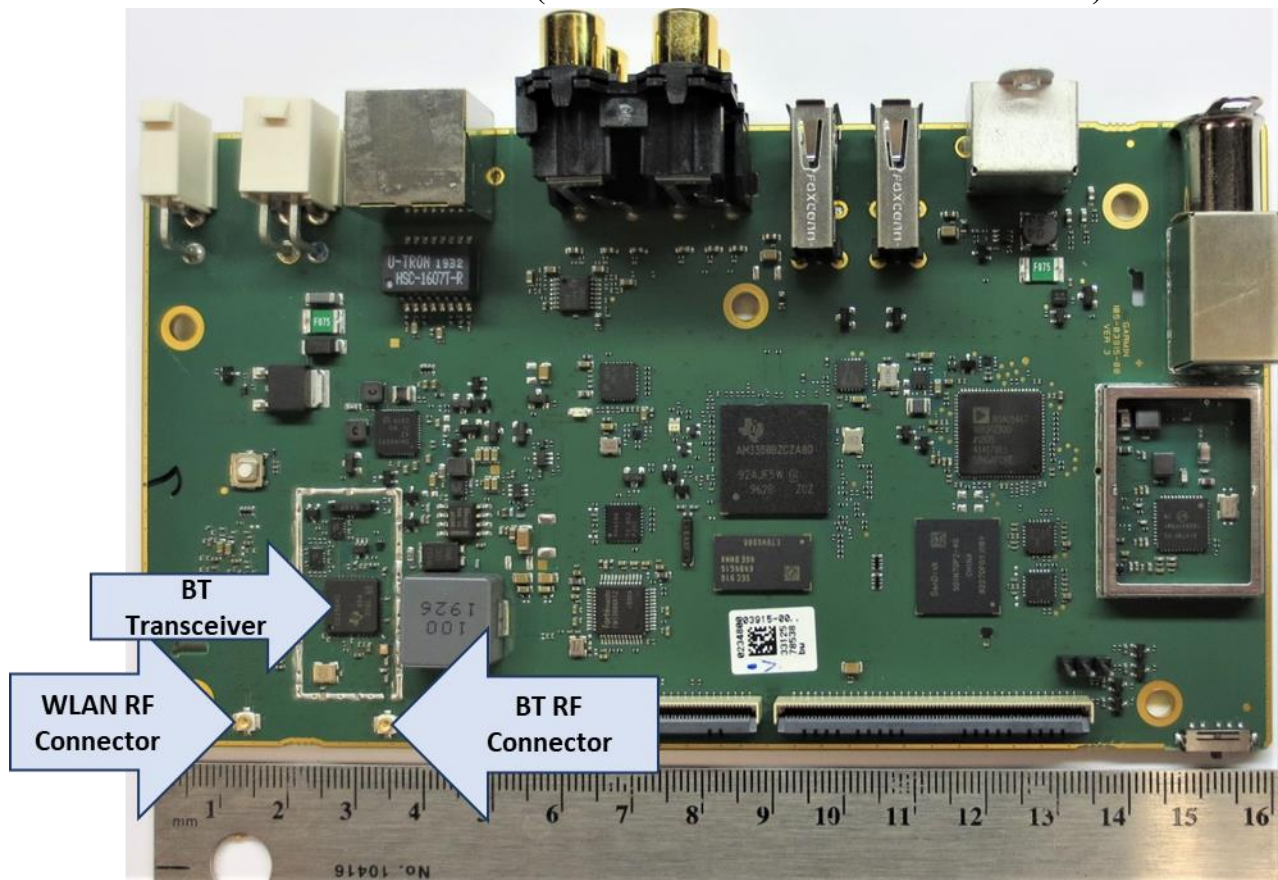


Rogers Labs, Inc.
4405 West 259th Terrace
Louisburg, KS 66053
Phone/Fax: (913) 837-3214
Revision 1

Garmin International, Inc.
Model: A03915
Test: 191105
Test to: CFR47 15C, RSS-210, RSS-247
File: A03915 Short Term Conf IntPho

SN's: 3303700951, 3303700953
FCC ID: IPH-03915
IC: 1792A-03915
Date: March 20, 2020
Page 6 of 8

012-03915-00 Linux Board (Transmitters/RF Connectors Annotated)

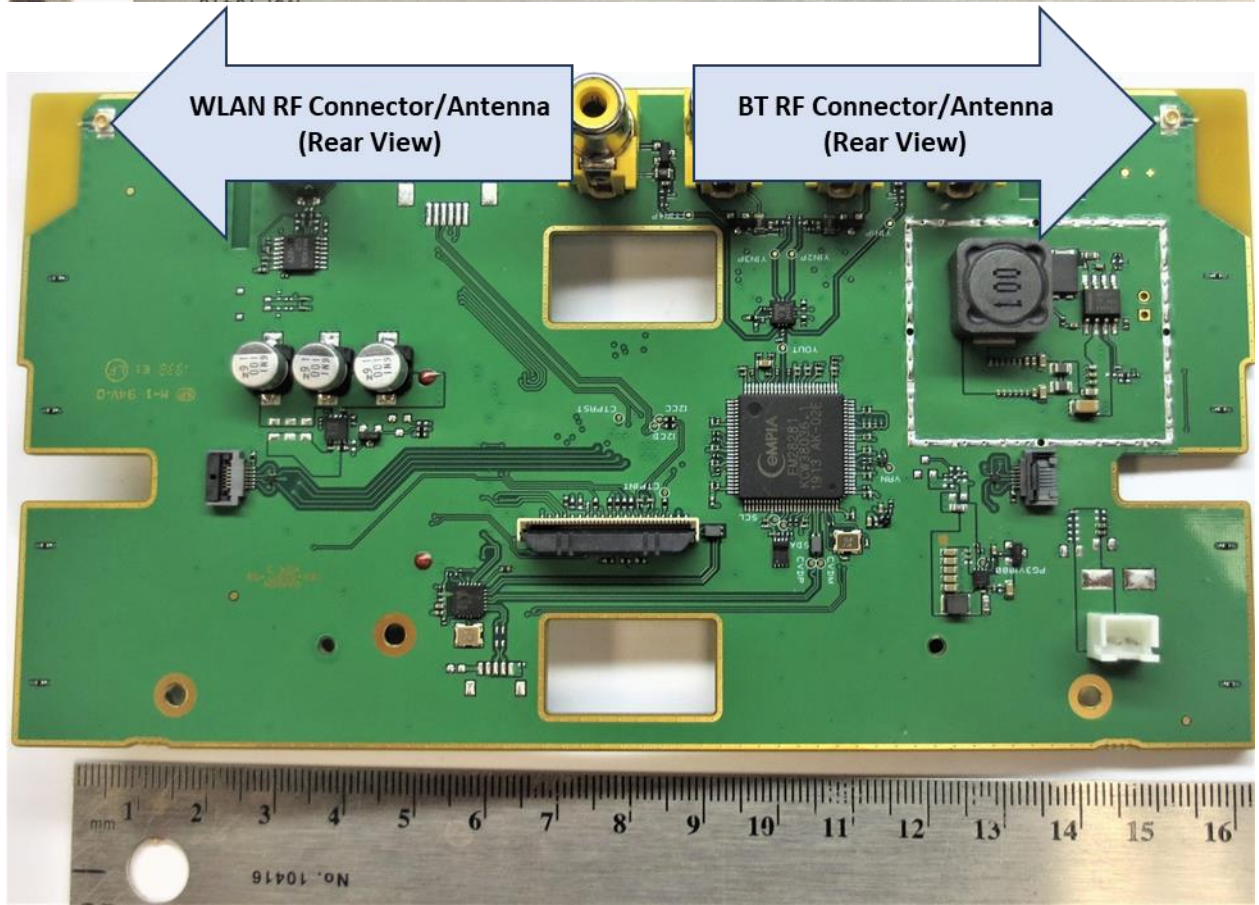
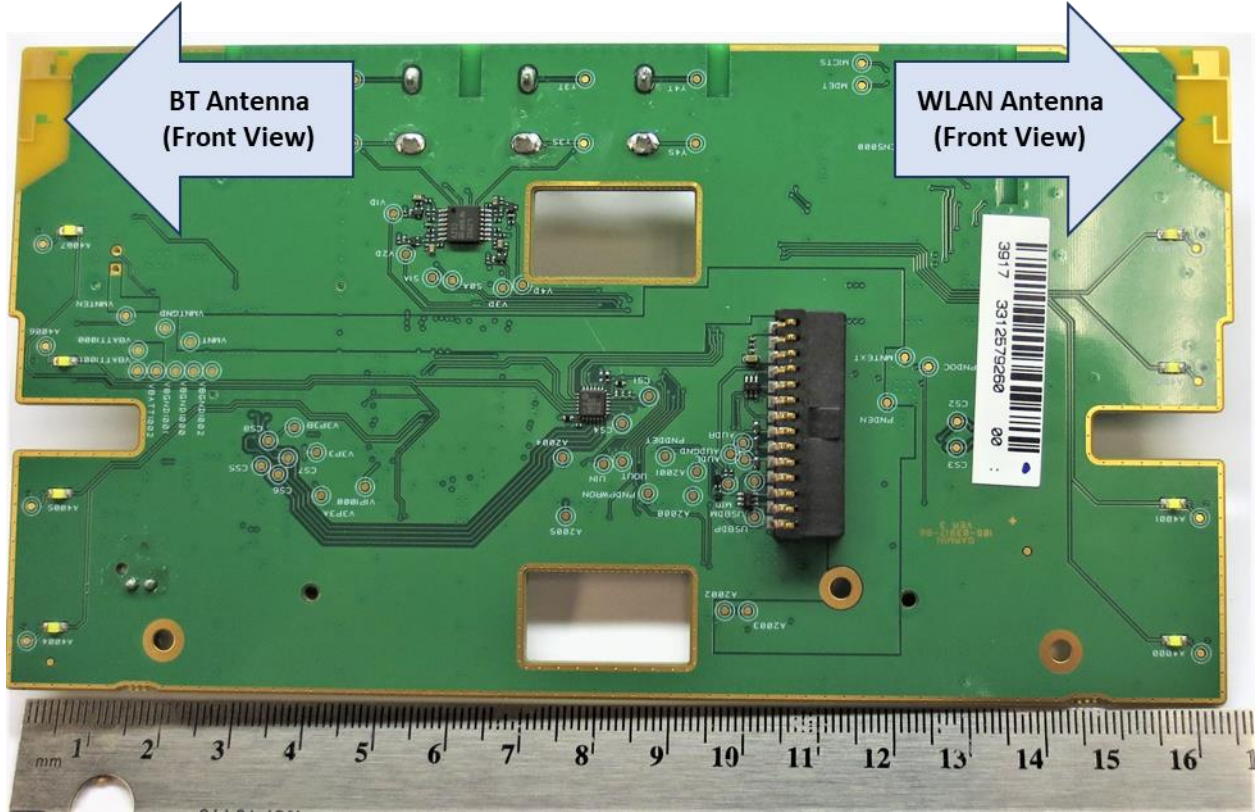


Rogers Labs, Inc.
4405 West 259th Terrace
Louisburg, KS 66053
Phone/Fax: (913) 837-3214
Revision 1

Garmin International, Inc.
Model: A03915
Test: 191105
Test to: CFR47 15C, RSS-210, RSS-247
File: A03915 Short Term Conf IntPho

SN's: 3303700951, 3303700953
FCC ID: IPH-03915
IC: 1792A-03915
Date: March 20, 2020
Page 7 of 8

012-03917-00 Mount Front Board (Antennas/RF Connectors Annotated)



Rogers Labs, Inc.
4405 West 259th Terrace
Louisburg, KS 66053
Phone/Fax: (913) 837-3214
Revision 1

Garmin International, Inc.
Model: A03915
Test: 191105
Test to: CFR47 15C, RSS-210, RSS-247
File: A03915 Short Term Conf IntPho

SN's: 3303700951, 3303700953
FCC ID: IPH-03915
IC: 1792A-03915
Date: March 20, 2020
Page 8 of 8