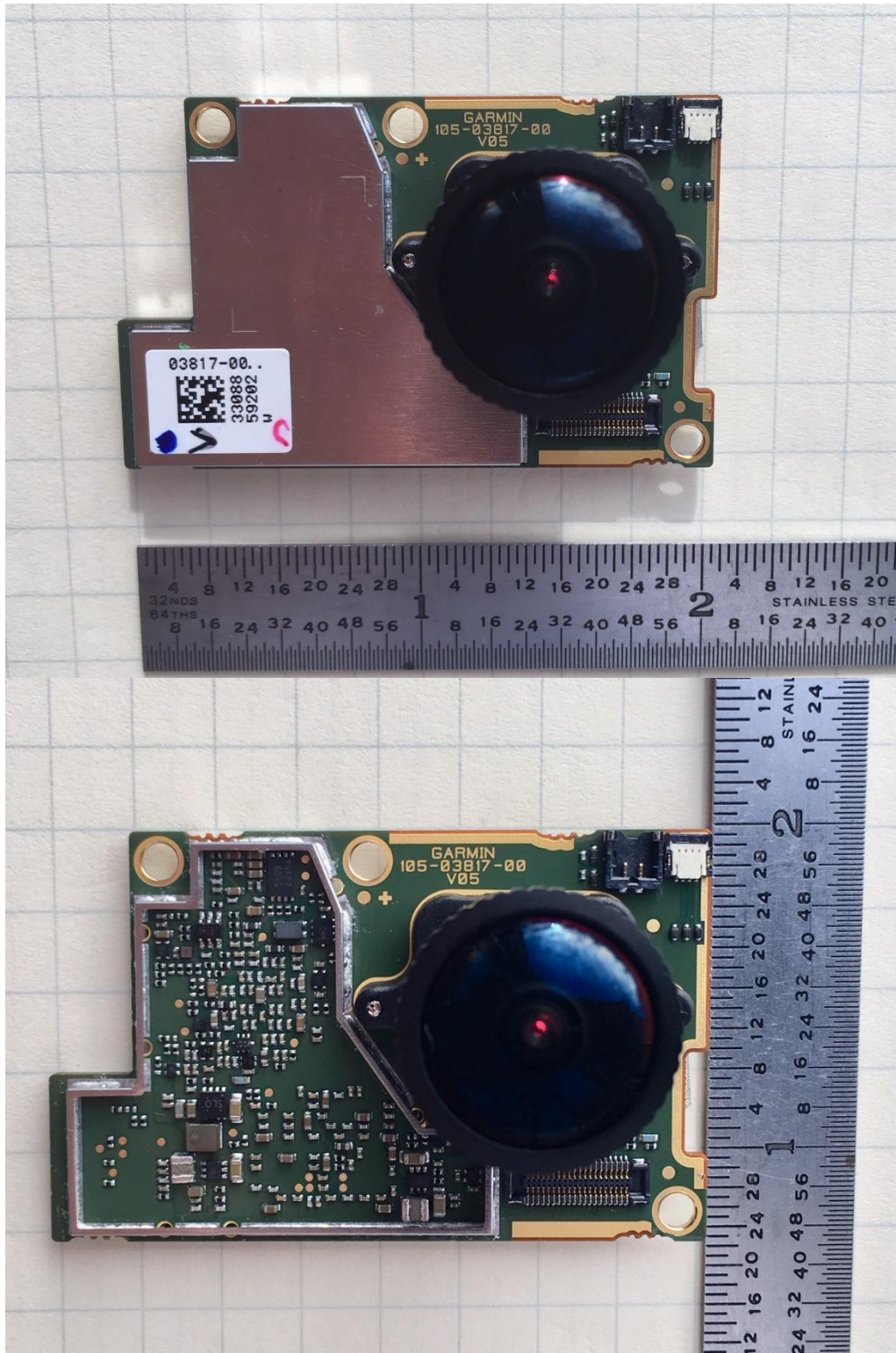


Rogers Labs, Inc.
4405 West 259th Terrace
Louisburg, KS 66053
Phone/Fax: (913) 837-3214
Revision 1

Garmin International, Inc.
Model: A03817
Test: 190930
Test to: CFR47 15C, RSS-Gen RSS-247
File: A03817 Short Term Conf IntPho

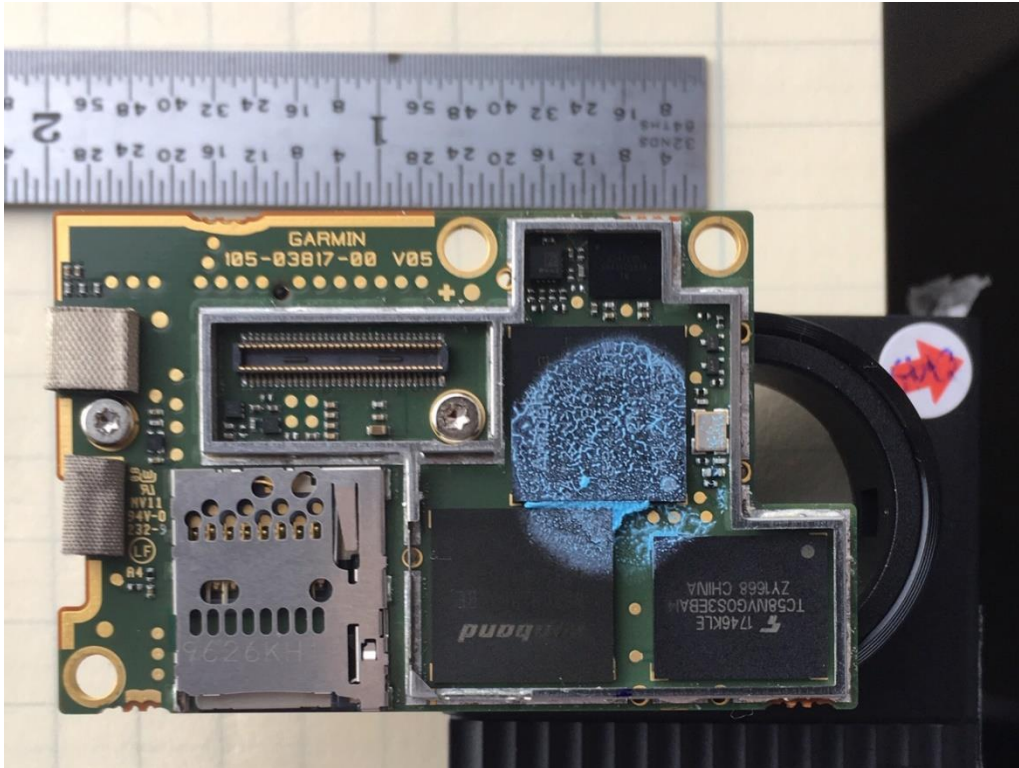
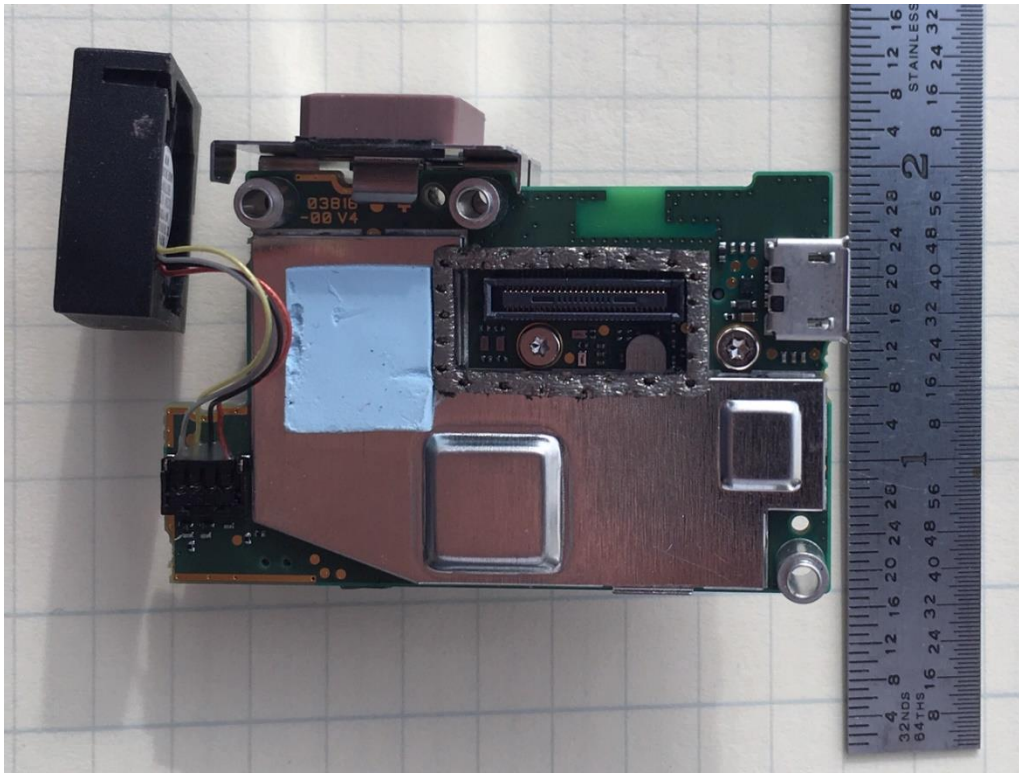
SN's: 14913175 / 3308859327
FCC ID: IPH-03817
IC: 1792A-03817
Date: November 14, 2019
Page 1 of 4



Rogers Labs, Inc.
4405 West 259th Terrace
Louisburg, KS 66053
Phone/Fax: (913) 837-3214
Revision 1

Garmin International, Inc.
Model: A03817
Test: 190930
Test to: CFR47 15C, RSS-Gen RSS-247
File: A03817 Short Term Conf IntPho

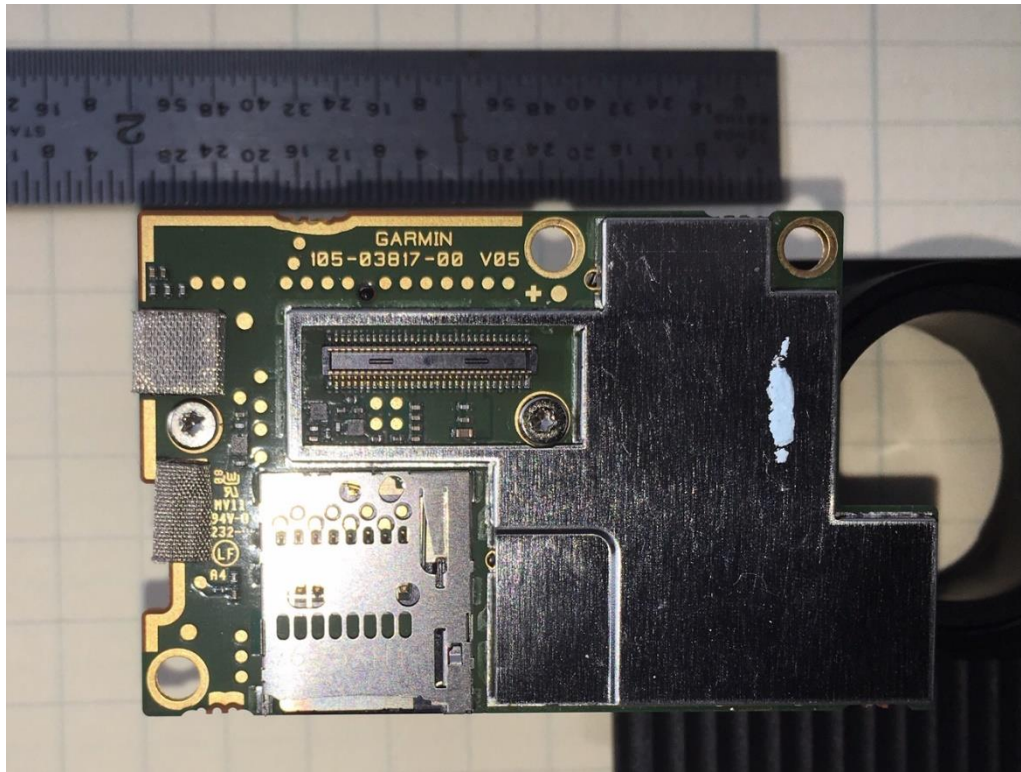
SN's: 14913175 / 3308859327
FCC ID: IPH-03817
IC: 1792A-03817
Date: November 14, 2019
Page 2 of 4



Rogers Labs, Inc.
 4405 West 259th Terrace
 Louisburg, KS 66053
 Phone/Fax: (913) 837-3214
 Revision 1

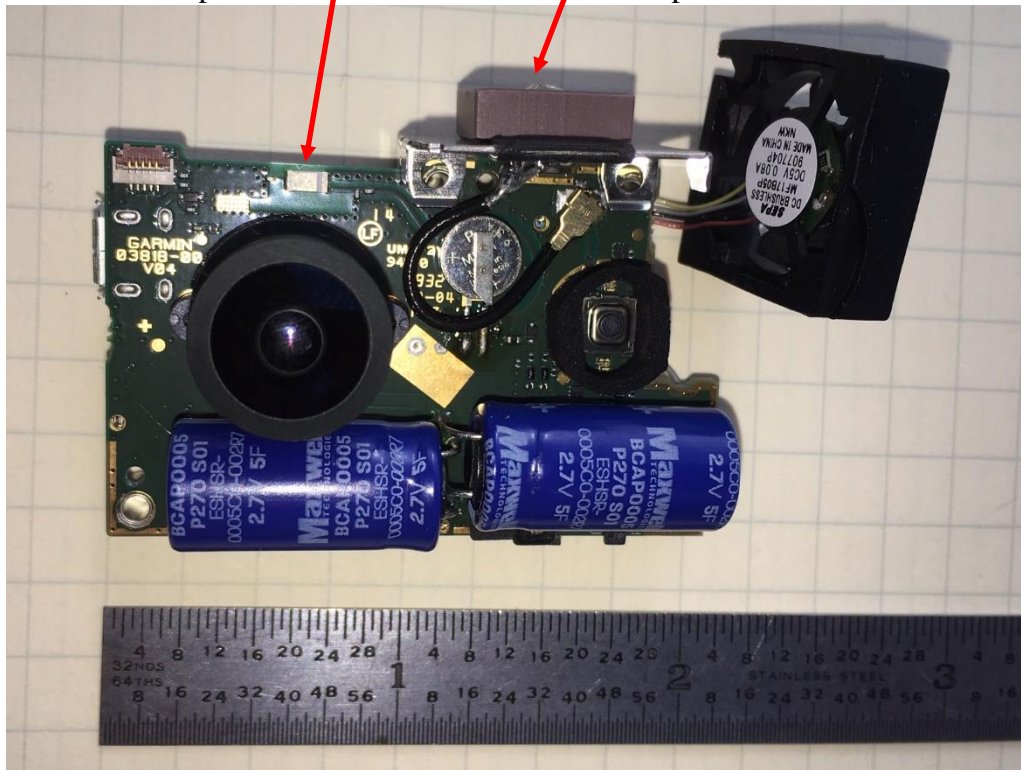
Garmin International, Inc.
 Model: A03817
 Test: 190930
 Test to: CFR47 15C, RSS-Gen RSS-247
 File: A03817 Short Term Conf IntPho

SN's: 14913175 / 3308859327
 FCC ID: IPH-03817
 IC: 1792A-03817
 Date: November 14, 2019
 Page 3 of 4



BLE/Wi-Fi chip antenna

GNSS patch antenna



Rogers Labs, Inc.
 4405 West 259th Terrace
 Louisburg, KS 66053
 Phone/Fax: (913) 837-3214
 Revision 1

Garmin International, Inc.
 Model: A03817
 Test: 190930
 Test to: CFR47 15C, RSS-Gen RSS-247
 File: A03817 Short Term Conf IntPho

SN's: 14913175 / 3308859327
 FCC ID: IPH-03817
 IC: 1792A-03817
 Date: November 14, 2019
 Page 4 of 4