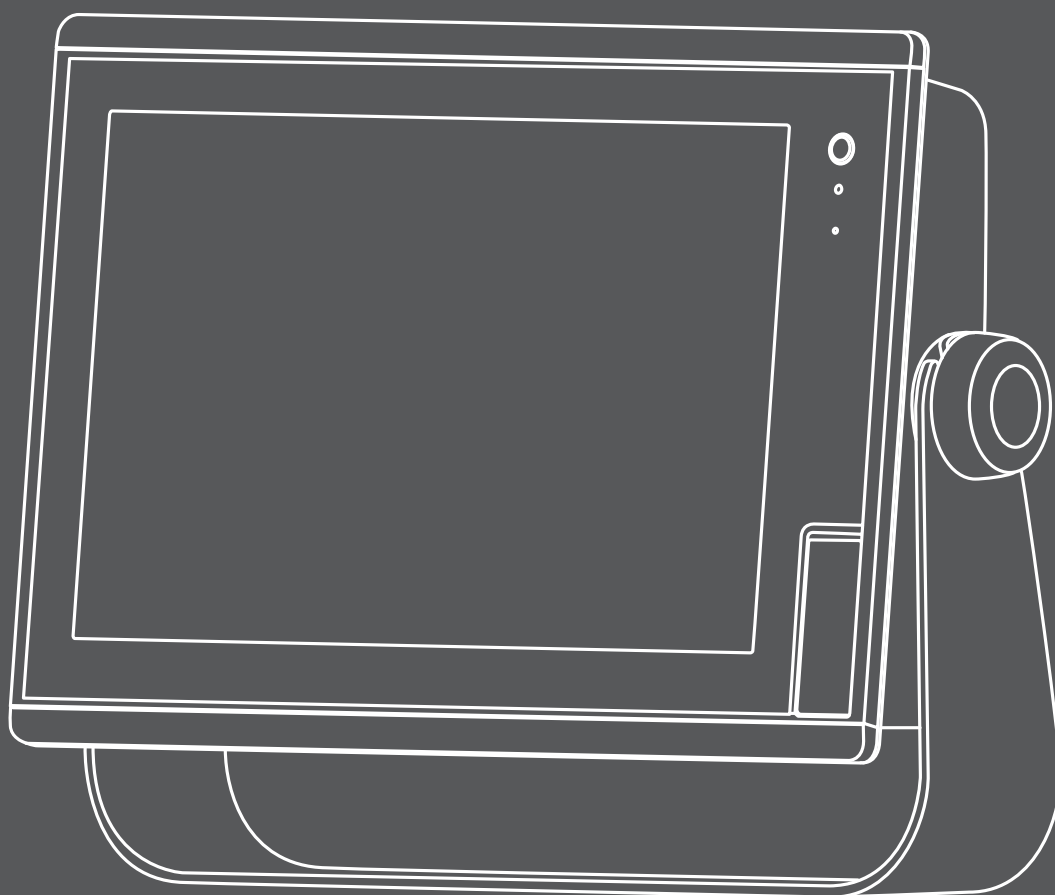


**GARMIN®**



**GPSMAP® 8400/8600 SERIES**

**Quick Start Manual**

## Introduction

### ⚠ WARNING

See the *Important Safety and Product Information* guide in the product box for product warnings and other important information.

### Device Overview



①	Touchscreen
②	Power key
③	Automatic backlight sensor
④	32 GB microSD®

### On-Screen Buttons

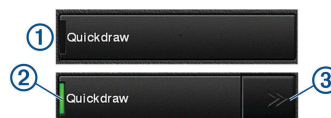
These on-screen buttons may be displayed on some screens and functions. Some buttons are accessible only in a combination page or SmartMode™ layout.

Button	Function
	Clears the on-screen icons and re-centers the screen on the boat
	Opens a full screen view of the item
	Creates a new waypoint
	Creates a route, with turns, to the destination
	Adds a turn to the route at the selected location
	Removes the last turn added from the route
	Creates a direct route, without turns, to the destination
	Creates an Auto Guidance route to the destination
	Begins navigation
	Ends navigation
	Acquires a radar target and begins tracking it
	Opens the menu for the page or function
	Opens the presets menu for the page or function

### Tips and Shortcuts

- Press to turn on the chartplotter.
- From any screen, press repeatedly to scroll through the brightness levels.  
This can be helpful when the brightness is so low you cannot see the screen.
- Select **Home** from any screen to return to the Home screen.
- Select **Menu** to open additional settings about that screen.
- Select **Menu** to close the menu when finished.

- Press to open additional options, such as adjusting the backlight and locking the touchscreen.
- Press , and select **Power > Turn Off System**, or hold until the **Turn Off System** bar fills to turn off the chartplotter.
- Press , and select **Power > Sleep Station** to set the chartplotter to standby mode.
- On the home screen of some models, swipe up or down on the category buttons along the right side of the screen to view the additional buttons.  
On some models, not all category buttons are visible. The arrows at the top or bottom of the buttons indicate not all buttons are visible.
- On some menu buttons, select the button ① to enable the option.



A green light on an option indicates the option is enabled ②.

- When available, select the arrows ③ to open the menu.  
On some buttons, when an option is selected ②, the menu arrows ③ appear.

### Accessing Owner's Manuals on the Chartplotter

- 1 Select **Info > Owner's Manual**.
- 2 Select a manual.
- 3 Select **Open**.

### Downloading the Manuals from the Web

You can get the latest owner's manual and translations of manuals from the Garmin® website. The owner's manual includes instructions for using device features and accessing regulatory information.

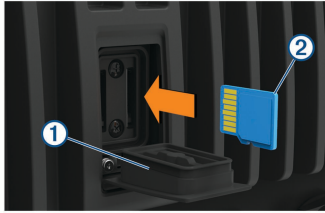
- 1 Go to [www.garmin.com/manuals/GPSMAP8400-8600](http://www.garmin.com/manuals/GPSMAP8400-8600).
- 2 Download the manual.

### Inserting Memory Cards

You can use optional memory cards with the chartplotter. Map cards allow you to view high-resolution satellite imagery and aerial reference photos of ports, harbors, marinas, and other points of interest. You can use blank memory cards to record Garmin Quickdraw™ Contours mapping, record sonar (with a compatible transducer), transfer data such as waypoints and routes to another compatible chartplotter or a computer, and use the ActiveCaptain™ app.

This device supports up to a 32 GB microSD memory card, formatted to FAT32.

- 1 Pull down the weather cap ① on the back of the chartplotter.



- 2 Insert the memory card ②.
- 3 Press the card in until it clicks.
- 4 Press the weather cap firmly shut to prevent corrosion.

## Basic Operation

### Home Screen

The chartplotter home screen provides access to all of the features in the chartplotter. The features are dependant on the accessories you have connected to the chartplotter. You may not have all of the options and features discussed in this manual.



①	Status bar
②	Feature categories
③	Page buttons <b>TIP:</b> Hold a button to save that page to the Favorites category.
④	Menu bar <b>TIP:</b> When viewing another screen, you can return to the home screen by selecting Home.

### Adding an Item to Favorites

- 1 From the home screen, select a category from the right.
- 2 Hold a button on the left.  
The item is added to the Favorites home screen category.

### Customizing the Layout of a SmartMode or Combination Page




You can customize the layout and data shown in the combination pages and SmartMode layouts. When you change the layout of a page in a display you are interacting with, the change appears only on that display, except for the SmartMode name and symbol. When you change the SmartMode name or symbol for the layout, the new name or symbol appears on all displays in the station.

- 1 Open a page to customize.
- 2 Select **Menu**.
- 3 Select **Edit Layout** or **Edit Combo**.
- 4 Select an item to edit.  
**TIP:** While viewing a screen with data overlay, hold an overlay box to quickly change the data in it.

## Navigating to a Point on the Chart

### ⚠ WARNING

A magenta line displayed on the chartplotter is only intended to provide general route guidance or to identify proper channels, and it is not intended to be precisely followed. Always defer to the nav aids and conditions on the water when navigating to avoid groundings or hazards that could result in vessel damage, personal injury, or death.

- 1 From the Navigation chart or Fishing chart, select a location.
- 2 If necessary, select **Navigate To**.
- 3 Select an option:
  - To navigate directly to the location, select **Go To** or .
  - To create a route to the location, including turns, select **Route To** or .
  - To use Auto Guidance, select **Auto Guidance** or .

**NOTE:** Auto Guidance is available with premium charts, in some areas.
- 4 Review the course indicated by the magenta line.  
**NOTE:** When using Auto Guidance, a gray segment within any part of the magenta line indicates that Auto Guidance cannot calculate part of the Auto Guidance line. This is due to the settings for minimum safe water depth and minimum safe obstacle height.
- 5 Follow the magenta line, steering to avoid land, shallow water, and other obstacles.

### Copying User Data to a Memory Card

You can save user data to a memory card to transfer to other devices. User data includes waypoints, routes, Auto Guidance paths, tracks, and boundaries.

- 1 Insert a memory card into the card slot.
- 2 Select **Info > User Data > Data Transfer > Save to Card**.
- 3 If necessary, select the memory card to copy the data to.
- 4 Select an option:
  - To create a new file, select **Add New File**, and enter a name.
  - To add the information to an existing file, select the file from the list, and select **Save to Card**.

### Showing Tracks

- 1 From a chart, select **Menu > Layers > User Data > Tracks**.
- 2 Select the tracks to display.  
A trailing line on the chart indicates your track.

### Configuring the Recording Interval of the Track Log

You can indicate the frequency at which the track plot is recorded. Recording more frequent plots is more accurate but fills the track log faster. The resolution interval is recommended for the most efficient use of memory.

- 1 Select **Info > User Data > Tracks > Active Track Options > Interval > Interval**.

- 2 Select an option:
  - To record the track based on a distance between points, select **Distance > Change**, and enter the distance.
  - To record the track based on a time interval, select **Time > Change**, and enter the time interval.
  - To record the track plot based on a variance from your course, select **Resolution > Change**, and enter the maximum error allowed from the true course before recording a track point. This is the recommended recording option.

## ActiveCaptain App

### CAUTION

This feature allows users to submit information. Garmin makes no representations about the accuracy, completeness, or timeliness of information submitted by users. Any use or reliance on the information submitted by users is at your own risk.

The ActiveCaptain app provides a connection to your GPSMAP device, charts, maps, and the community for a connected boating experience.

On your mobile device with the ActiveCaptain app, you can download, purchase, and update maps and charts. You can use the app to easily and quickly transfer user data, such as waypoints and routes, connect to the Garmin Quickdraw Contours Community, and update device software. You can also plan your trip, and view and control the GPSMAP device from the app.

You can connect to the ActiveCaptain community for up-to-date feedback on marinas and other points of interest. The app can push smart notifications, such as calls and texts, to your chartplotter display when paired.

### Getting Started with the ActiveCaptain App

**NOTE:** The ActiveCaptain feature is only available on models that have Wi-Fi® technology.

You can connect a mobile device to the GPSMAP device using the ActiveCaptain app. The app provides a quick and easy way for you to interact with your chartplotter and complete such tasks as sharing data, registering, updating the device software, and receiving mobile device notifications.

- 1 From the GPSMAP device, select **ActiveCaptain**.
- 2 From the **ActiveCaptain** page, select **Wi-Fi Network > Wi-Fi > On**.
- 3 Enter a name and password for this network.
- 4 Insert a memory card in the GPSMAP device's card slot.
- 5 Select **Set ActiveCaptain Card**.

### NOTICE

You might be prompted to format the memory card. Formatting the card deletes all information saved on the card. This includes any saved user data, such as waypoints. Formatting the card is recommended, but not required. Before formatting the card, you should save the data from the memory card onto the device internal memory.

Be sure the card is inserted each time you want to use the ActiveCaptain feature.

- 6 From the application store on your mobile device, install and open the ActiveCaptain app.
- 7 Bring the mobile device within 32 m (105 ft.) of the GPSMAP device.
- 8 From your mobile device settings, open the Wi-Fi connections page and connect to the Garmin device, using the name and password you entered in the Garmin device.

For more information about the ActiveCaptain app and features, see the Owner's Manual at [www.garmin.com/manuals/GPSMAP8400-8600](http://www.garmin.com/manuals/GPSMAP8400-8600) or watch a video at [www.garmin.com/ActiveCaptainVideo](http://www.garmin.com/ActiveCaptainVideo).

### Enabling Smart Notifications

#### WARNING

Do not read or reply to notifications while operating the vessel. Failure to pay attention to the conditions on the water can result in vessel damage, personal injury, or death.

Before your GPSMAP device can receive notifications, you must connect it to your mobile device and to the ActiveCaptain app.

- 1 From the GPSMAP device, select **ActiveCaptain > Smart Notifications > Enable Notifications**.
- 2 Turn on Bluetooth® technology in the mobile device settings.
- 3 Bring the devices within 10 m (33 ft.) of each other.
- 4 From the ActiveCaptain app on the mobile device, select **Smart Notifications > Pair with Chartplotter**.
- 5 Follow the on-screen instructions to pair the app to the GPSMAP device using Bluetooth technology.
- 6 When prompted, enter the key on your mobile device.
- 7 If necessary, adjust which notifications you receive in your mobile device settings.

## Troubleshooting

### My device is not creating waypoints in the correct location

You can manually enter a waypoint location to transfer and share data from one device to the next. If you have manually entered a waypoint using coordinates, and the location of the point does not appear where the point should be, the map datum and position format of the device may not match the map datum and position format originally used to mark the waypoint.

Position format is the way in which the GPS receiver's position appears on the screen. This is commonly displayed as latitude/longitude in degrees and minutes, with options for degrees, minutes and second, degrees only, or one of several grid formats.

Map datum is a math model which depicts a part of the surface of the earth. Latitude and longitude lines on a paper map are referenced to a specific map datum.

- 1 Find out which map datum and position format was used when the original waypoint was created.

If the original waypoint was taken from a map, there should be a legend on the map that lists the map datum and position format used to create that map. Most often this is found near the map key.

- 2 Select **Settings > Units**.
- 3 Select the correct map datum and position format settings.
- 4 Create the waypoint again.

### **My chartplotter will not acquire GPS signals**

If the device is not acquiring satellite signals, there could be a few causes. If the chartplotter has moved a large distance since the last time it has acquired satellites or has been turned off for longer than a few weeks or months, the device may not be able to acquire the satellites correctly.

- Make sure the GPS antenna has a clear view of the sky to receive the GPS signal.  
If it is mounted inside of a cabin, it should be close to a window so it can receive the GPS signal.
- Make sure the GPS antenna is connected to the NMEA<sup>®</sup> network.
- If the chartplotter has more than one GPS antenna source, select a different source.
- Ensure the device is using the latest software, and update the device software if necessary.

### **Updating the Device Software**

You may need to update the device software when you install this device or add an accessory to the network. You can use one of two methods to update the software.

- Use the ActiveCaptain app.
- Download the update from [www.garmin.com/support/software/marine.html](http://www.garmin.com/support/software/marine.html) using a memory card (32 GB max.) and a computer running Windows<sup>®</sup> operating system.

For more information, see the owner's manual at [www.garmin.com/manuals/GPSMAP8400-8600](http://www.garmin.com/manuals/GPSMAP8400-8600).

### **Registering Your Device**

Help us better support you by completing our online registration today. You can register your device using one of two methods.

- Use the ActiveCaptain app.
- Go to [my.garmin.com/registration](http://my.garmin.com/registration) and sign into your Garmin account to register the device.

Keep the original sales receipt, or a photocopy, in a safe place. After you add devices to the chartplotter network, register the new devices.

[support.garmin.com](http://support.garmin.com)

© 2018 Garmin Ltd. or its subsidiaries

Garmin®, the Garmin logo, BlueChart®, and GPSMAP® are trademarks of Garmin Ltd. or its subsidiaries, registered in the USA and other countries. Garmin LakeVü™ and SmartMode™ are trademarks of Garmin Ltd. or its subsidiaries.

The NMEA 2000® logo is a registered trademark of the National Marine Electronics Association.



Printed in Taiwan  
November 2018  
90-02469-01\_0A

