

GARMIN.



BC™ 40 WIRELESS BACKUP CAMERA

Quick Start Manual

Getting Started

WARNING


See the *Important Safety and Product Information* guide in the product box for product warnings and other important information.

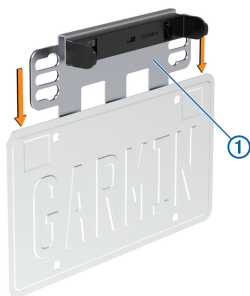
Installing the Mount on Your Vehicle

- 1 Remove the license plate screws from the rear of your vehicle, and remove the license plate, vanity frames, and license plate covers.

NOTE: The camera mount is intended to be installed onto the bare license plate, and it is not compatible with vanity frames or license plate covers.

- 2 Slide the metal bracket over the top or bottom of the license plate.

The flat metal plate  on the bracket slides behind the license plate.

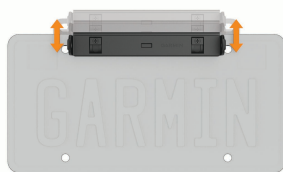


NOTE: It is recommended to install the camera above the license plate, if possible. If there is not enough room above the license plate on your vehicle, you can configure the mount for installation below the license plate (page 2).

- 3 Hold the license plate and mount up to the license plate area on your vehicle,

and slide the mount up or down to align one set of mounting holes with the holes in the license plate.

You should use the mounting position that fits your vehicle and covers the smallest portion of the license plate. You must avoid covering any text or numbers on the license plate. Some jurisdictions prohibit covering any portion of the license plate. It is your responsibility to follow license plate mounting regulations.



- 4 Insert the license plate screws through the top of the license plate and mount, and into the license plate mounting holes on your vehicle.

In either orientation, the mounting plate provides mounting holes at the top and bottom of the license plate.



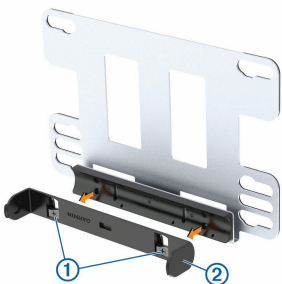
- 5 Fully tighten the license plate screws.

Installing the Camera at the Bottom of Your License Plate

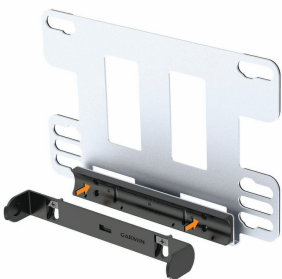
When the mount is installed on your vehicle, the Garmin® logo on the camera clip must be right-side up. Out of the box, the camera mount is assembled for installing the camera at the top of your license plate. When installing the camera

at the bottom of your license plate, you must remove, rotate, and reattach the camera clip. This allows you to properly adjust the camera angle.

- 1 Using a Phillips screwdriver, fully loosen the two camera clip screws ①, and remove the camera clip ② from the metal bracket.



- 2 Rotate the camera clip 180 degrees, so the Garmin logo is facing right-side-up.
- 3 Insert the two camera clip screws into the holes labeled **BOTTOM OF PLATE** ③.



- 4 Tighten both screws.

Installing AA Batteries

The device operates on two AA batteries (not included). For the best results, you

should use lithium batteries, which provide extended battery life and better performance at low temperatures.

- 1 Rotate both battery covers ① toward the front of the camera, and remove the battery covers.



- 2 Insert a AA battery into each end of the camera, with the positive pole facing outward.



- 3 On each battery cover, verify the gasket ② is clean and fully seated in the groove.



- 4 For each battery cover, replace the cover, press it tightly into the camera, and rotate it toward the back of the camera to lock it into place.

NOTICE

The camera is not water resistant if the gaskets are not clean and properly seated, and the covers are not properly locked into place.

Installing the Camera in the Mount

- 1 Place one side of the camera into the mount, with the lens facing outward.



- 2 Press the other side into the mount until it clicks.
- 3 Pull gently on the camera to verify both sides are locked into the mount.

Pairing the Camera with a Garmin Navigation Device

You can pair the camera with a compatible Garmin navigation device.

- 1 Update your navigation device to the latest software.
Your device may not support the BC 40 camera without the latest software. For more information about updating, see the owner's manual for your navigation device.
- 2 Install batteries in the camera.
The camera enters pairing mode automatically, and the LED flashes blue while the camera is in pairing mode. The camera remains in pairing mode for five minutes. If pairing mode expires, you can remove and reinstall the batteries.
- 3 Bring the compatible Garmin navigation device within 3 m (10 ft.) of the camera, and turn on the device.

The device detects your camera automatically and prompts you to pair with it.


- 4 Select **Yes**.

TIP: If the device does not detect the camera automatically, you can select **Settings > Wireless Camera > Add New Camera** to pair with it manually.

- 5 Follow the on-screen instructions to finish pairing.
The camera view appears.

Viewing the Backup Camera

After you pair your camera with a compatible Garmin navigation device, the camera view appears automatically when you turn on your navigation device, and you can manually show the camera at any time.


- If your navigation device is connected to an ignition-switched power outlet (recommended), turn on your vehicle.
- If your navigation device is connected to an always-on power outlet, turn on the navigation device.
- To show the camera manually, select .
- To show or hide the camera using voice commands, say **Show Video** or **Hide Video**.

NOTE: This feature is not available for all languages.

The camera view appears. When the camera detects the vehicle is moving forward, the camera automatically stops sending video, and the navigation device returns to normal operation.

Adjusting the Camera Angle

You can adjust the camera angle up and down to provide the best view for your vehicle.

- 1 Drive to a level area with a clear view behind the vehicle.
- 2 Remove the camera from the mount.
- 3 Use a Phillips screwdriver to loosen the two adjustment screws .



- 4 Tilt the mount up or down.

- For most vehicles, the camera should face straight out or slightly downward.
- 5 Tighten the adjustment screws to lock the mount in the new position.
 - 6 Install the camera into the mount.
 - 7 View the camera using your Garmin navigation device (page 4), and verify the camera angle.
When the camera is angled correctly, the bottom edge of the video frame should align with the rearmost part of the vehicle, such as the bumper or trailer hitch. Objects above the horizon should appear in the top one-quarter to one-third of the frame.
 - 8 If necessary, repeat this procedure until the camera angle is correct.

WARNING

After you adjust the camera angle, you must align the guidance lines (page 5). If you previously set up guidance lines, they are not accurate after the camera angle changes. Failure to properly align the guidance lines could result in an accident or collision, resulting in death, serious injury, or property damage.

Aligning the Guidance Lines

- 1 Position your vehicle with the driver's side closely aligned to a curb, driveway, or parking stall lines.
- 2 From the paired Garmin navigation device, select **Settings > Wireless Camera**.
- 3 Select the paired camera name, and select **Guidance Lines > Adjust Guidance Lines**.
- 4 Use the arrows in the corners of the screen to move the ends of the white, driver's-side guidance line.

The guidance line should appear directly on top of the curb, driveway, or parking stall line.



- 5 Use the arrows in the center of the screen to move the colored distance guidance lines up or down.
The red guidance line should be aligned with the rearmost part of your vehicle.
- 6 Reposition the vehicle with the passenger side closely aligned to a curb, driveway, or parking stall lines, and use the arrows to align the white, passenger-side guidance line.
The guidance lines should be symmetrical.

Device Information

Getting the Owner's Manual

Go to garmin.com/manuals/bc40na.

Software Updates

Software updates for your camera are received automatically from the paired Garmin navigation device. You should update your Garmin navigation device software regularly to keep both it and the camera up to date. For more information about updating software, see the owner's manual for your Garmin navigator.

Garmin Support Center

Go to support.garmin.com for help and information, such as product manuals, frequently asked questions, videos, and customer support.

Specifications

Battery Type	2 removable AA. Lithium recommended.
Camera and transmitter waterproof rating	IEC 60529 IPX6/7
Operating temperature range	From -20° to 70°C (from -4° to 158°F)
Wireless frequencies/ protocols	Wi-Fi® 2.4 GHz @ +13dBm nominal Bluetooth® 2.4 GHz



support.garmin.com

© 2018 Garmin Ltd. or its subsidiaries

Garmin® and the Garmin logo are trademarks of Garmin Ltd. or its subsidiaries, registered in the USA and other countries. BC™ is a trademark of Garmin Ltd. or its subsidiaries. These trademarks may not be used without the express permission of Garmin.



Printed in Taiwan
August 2018
I90-02365-01_0A

