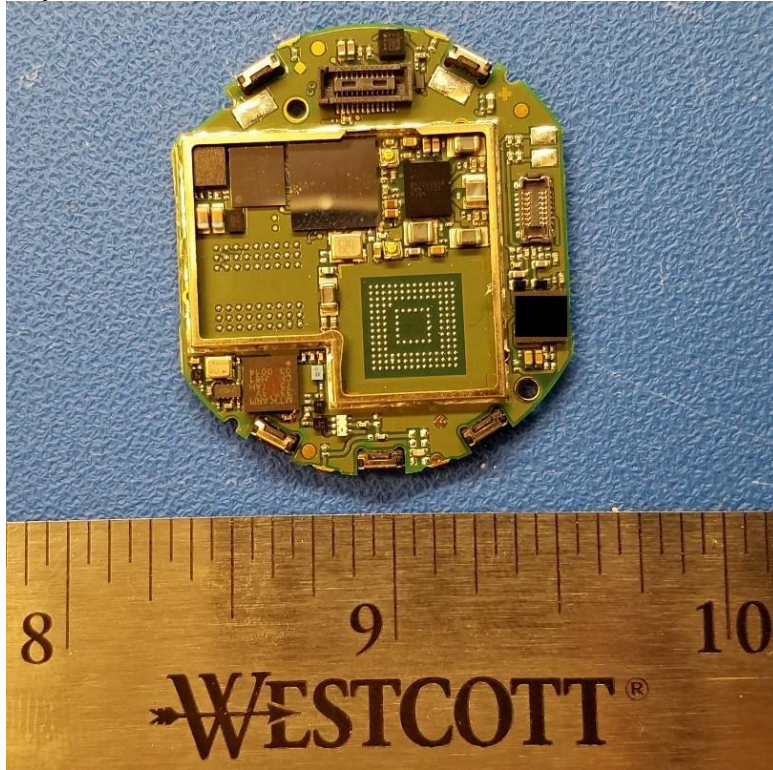
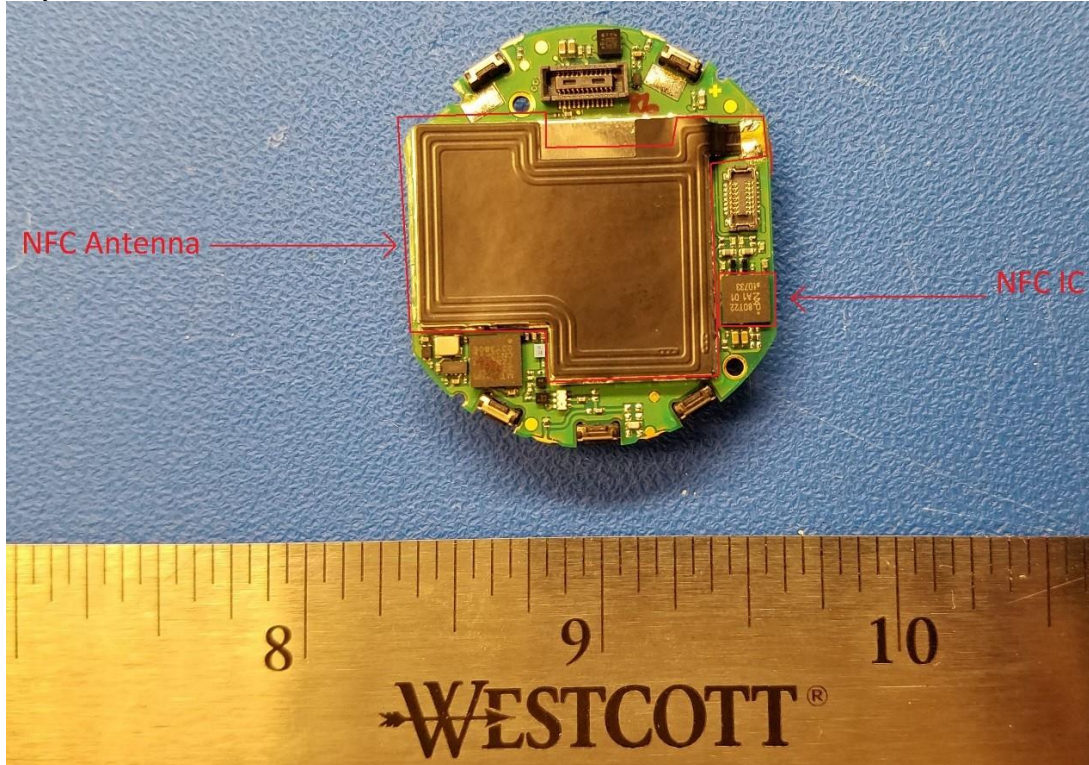


Top PCB no shield



Top PCB with shield

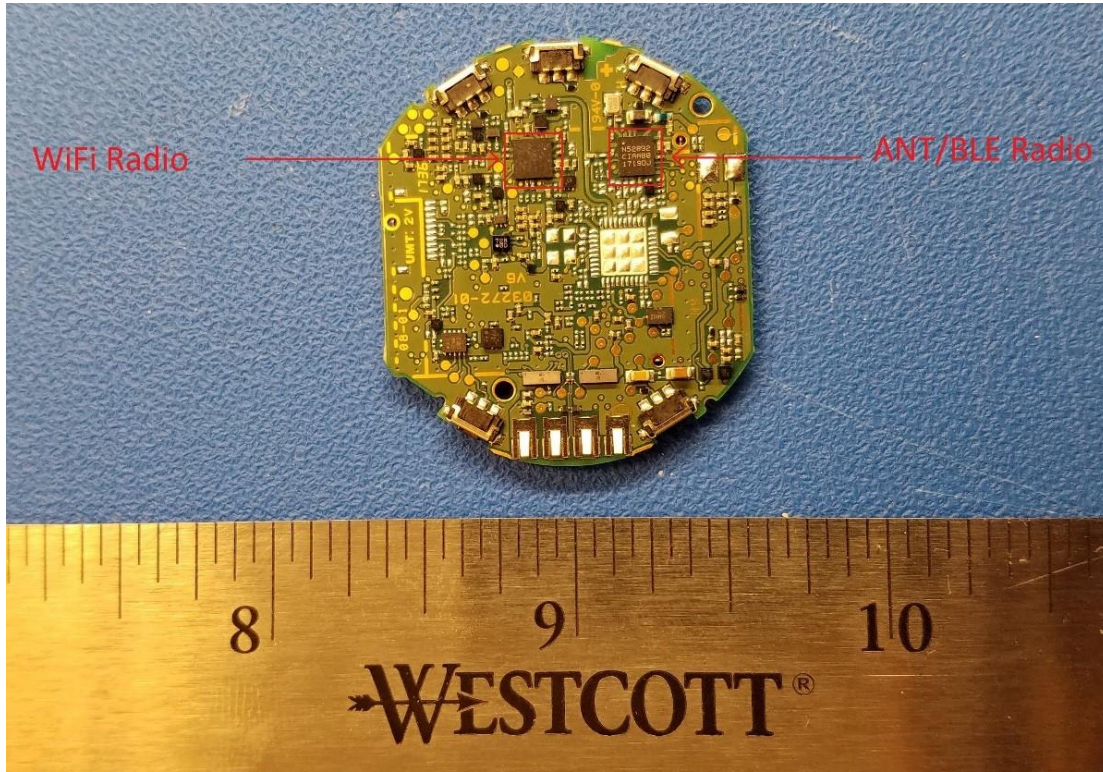


Rogers Labs, Inc.  
4405 West 259<sup>th</sup> Terrace  
Louisburg, KS 66053  
Phone/Fax: (913) 837-3214  
Revision 1

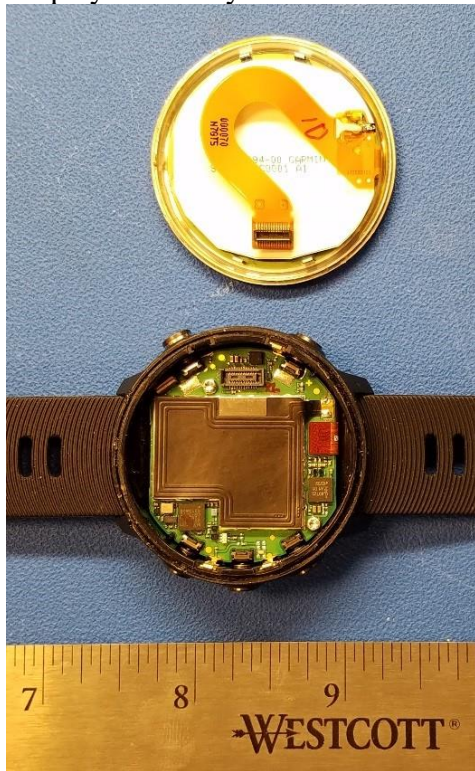
Garmin International, Inc.  
Model: A03272  
Test #: 170828 1206  
Test to: CFR47 15C, RSS-247, RSS-210  
File: A03272 IntPho

SN's: 3959315045 / 5054  
FCC ID: IPH-03272  
IC: 1792A-03272  
Date: January 12, 2018  
Page 1 of 4

Bottom PCB



Display Assembly removed

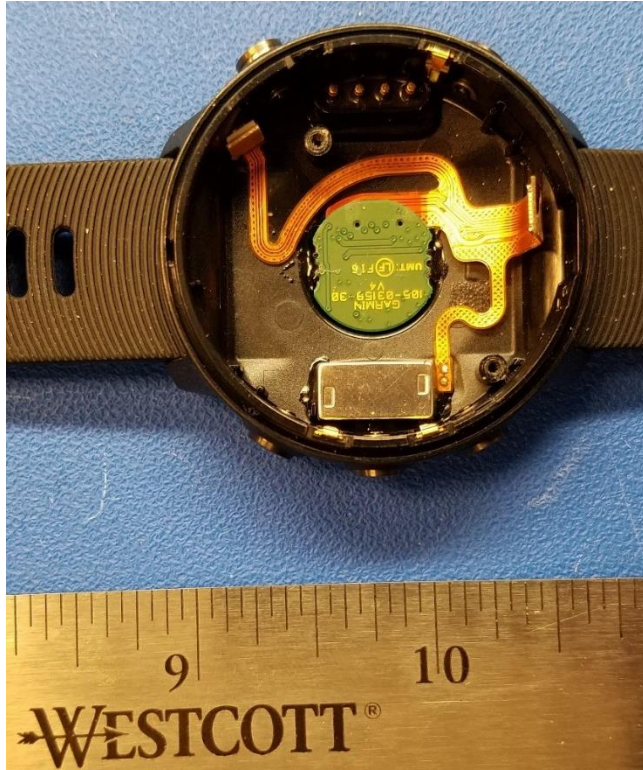


Rogers Labs, Inc.  
4405 West 259<sup>th</sup> Terrace  
Louisburg, KS 66053  
Phone/Fax: (913) 837-3214  
Revision 1

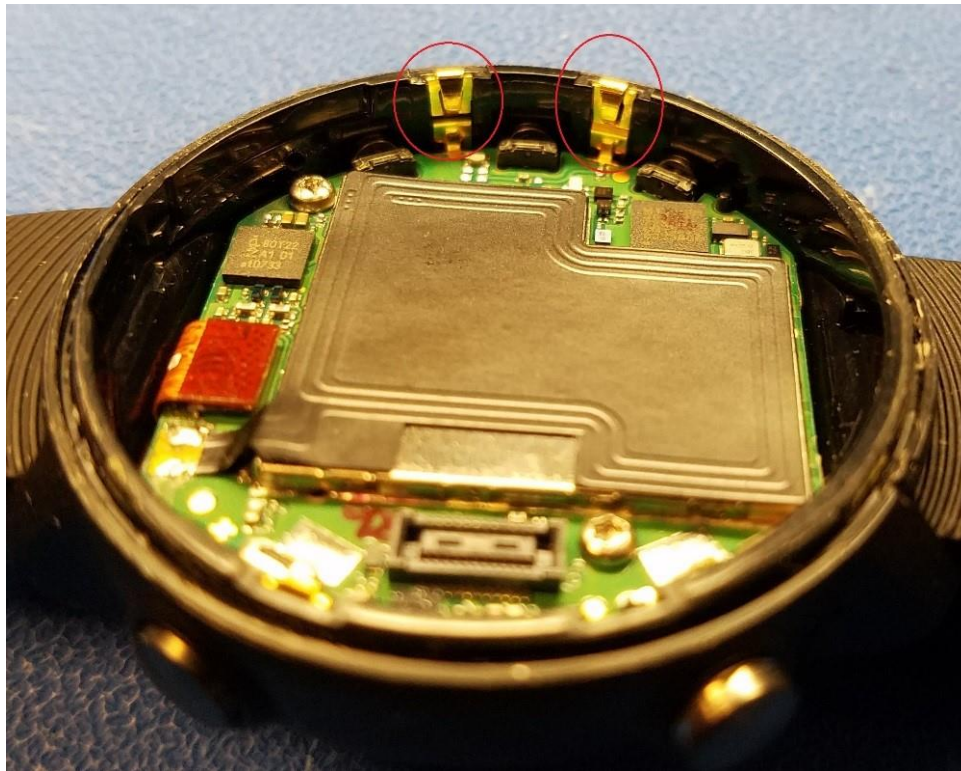
Garmin International, Inc.  
Model: A03272  
Test #: 170828 1206  
Test to: CFR47 15C, RSS-247, RSS-210  
File: A03272 IntPho

SN's: 3959315045 / 5054  
FCC ID: IPH-03272  
IC: 1792A-03272  
Date: January 12, 2018  
Page 2 of 4

Rear FPC



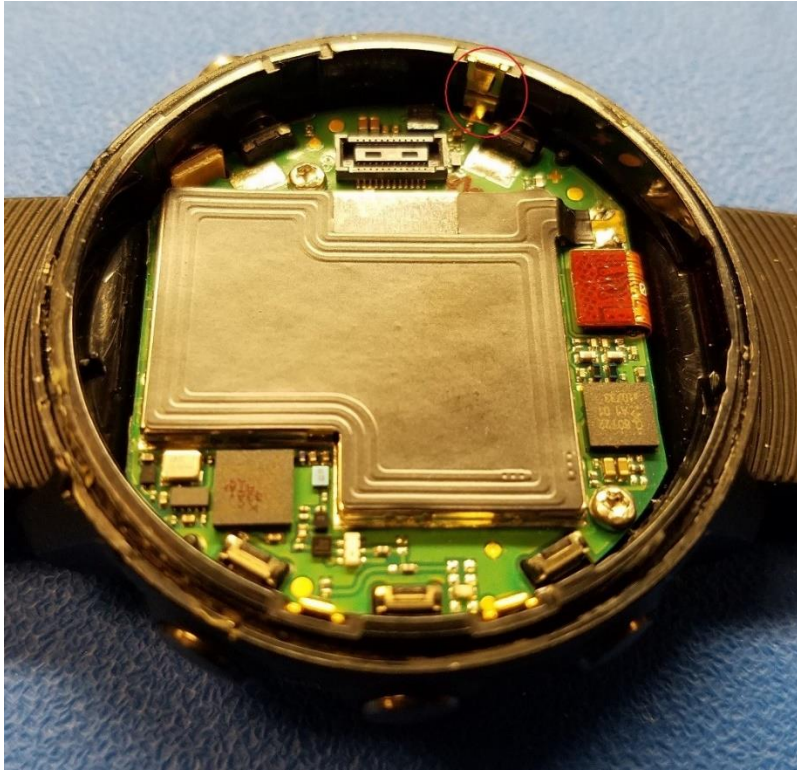
2.4 GHz antenna contacts



Rogers Labs, Inc.  
4405 West 259<sup>th</sup> Terrace  
Louisburg, KS 66053  
Phone/Fax: (913) 837-3214  
Revision 1

Garmin International, Inc.  
Model: A03272  
Test #: 170828 1206  
Test to: CFR47 15C, RSS-247, RSS-210  
File: A03272 IntPho

SN's: 3959315045 / 5054  
FCC ID: IPH-03272  
IC: 1792A-03272  
Date: January 12, 2018  
Page 3 of 4



Rogers Labs, Inc.  
4405 West 259<sup>th</sup> Terrace  
Louisburg, KS 66053  
Phone/Fax: (913) 837-3214  
Revision 1

Garmin International, Inc.  
Model: A03272  
Test #: 170828 1206  
Test to: CFR47 15C, RSS-247, RSS-210  
File: A03272 IntPho

SN's: 3959315045 / 5054  
FCC ID: IPH-03272  
IC: 1792A-03272  
Date: January 12, 2018  
Page 4 of 4