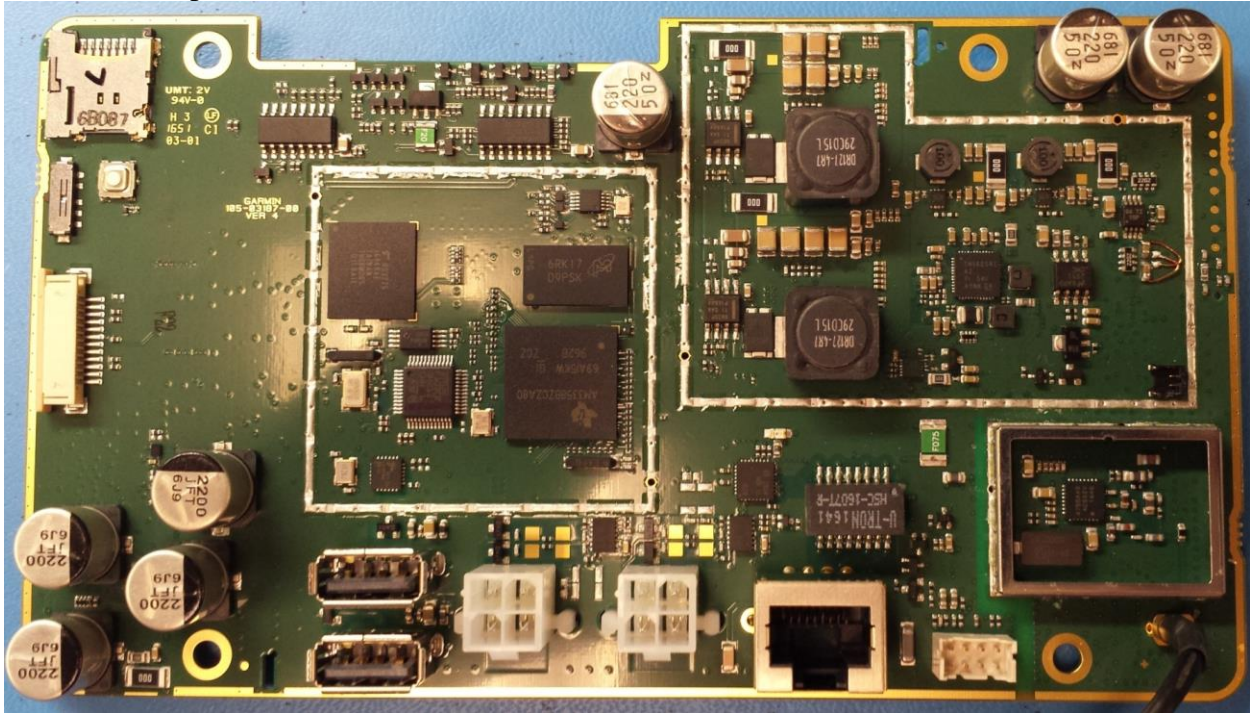
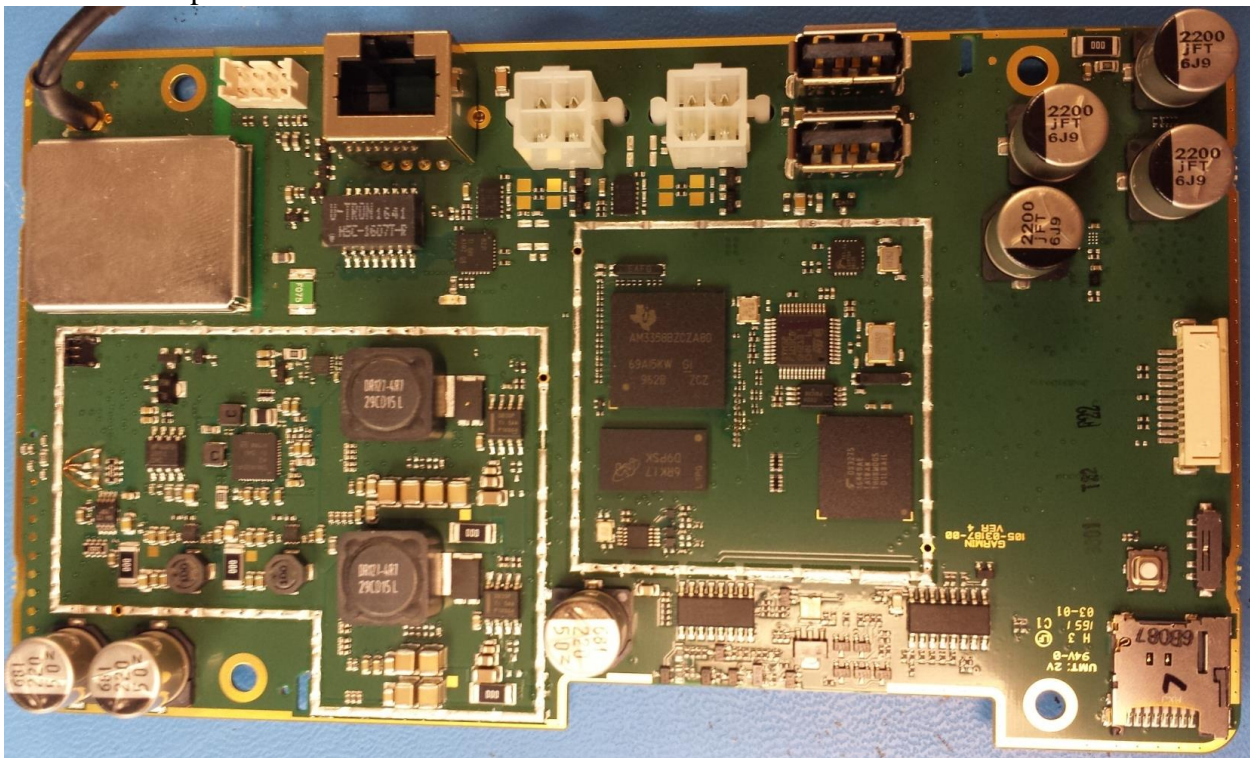


Main Board top side



Main Board top side

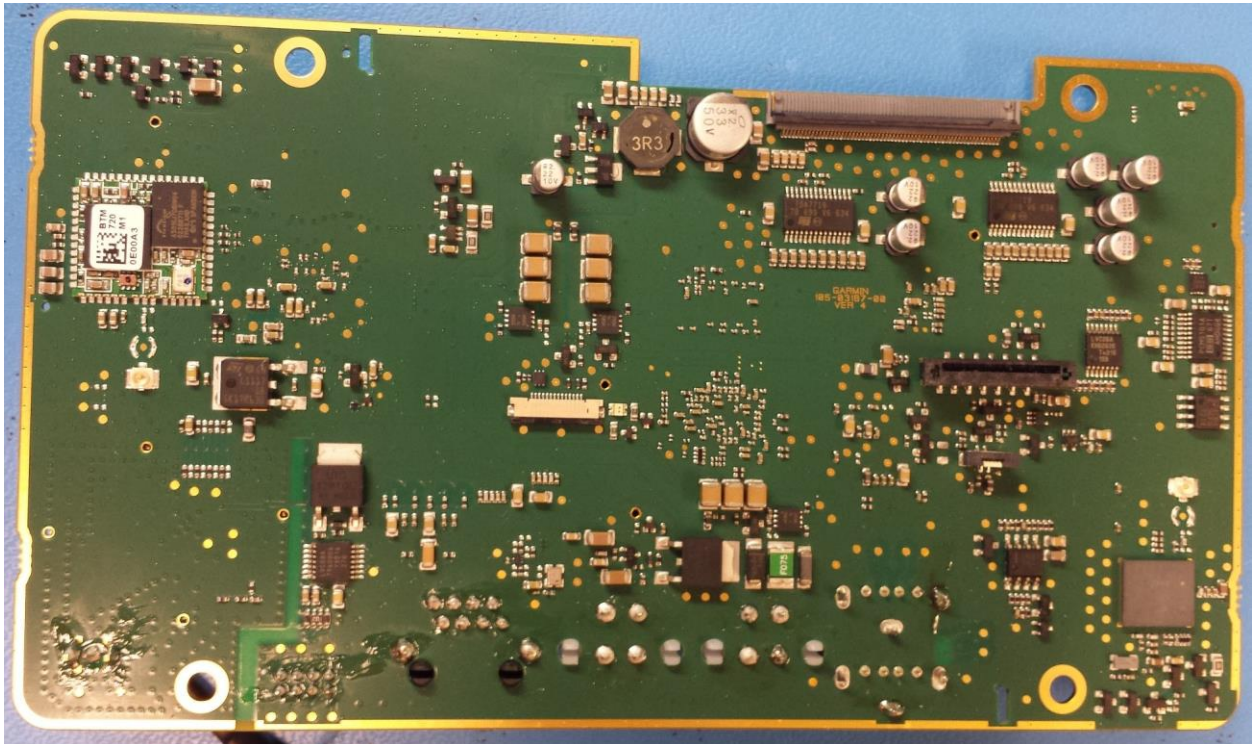


Rogers Labs, Inc.
4405 West 259th Terrace
Louisburg, KS 66053
Phone/Fax: (913) 837-3214
Revision 1

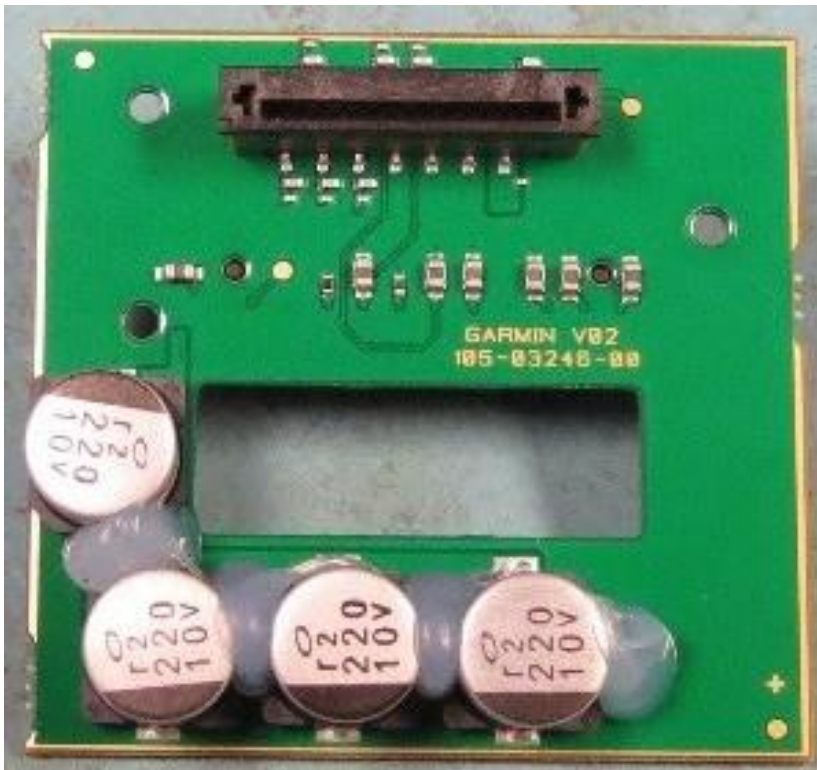
Garmin International, Inc.
Model: A03187
Test #: 170117
Test to: CFR47 15C, RSS-210, RSS-247
File: A03187 Short Term Conf IntPho

SN's: FF11 / FF12-2nd
FCC ID: IPH-03187
IC: 1792A-03187
Date: February 11, 2017
Page 1 of 4

Main Board back



Mount board Front

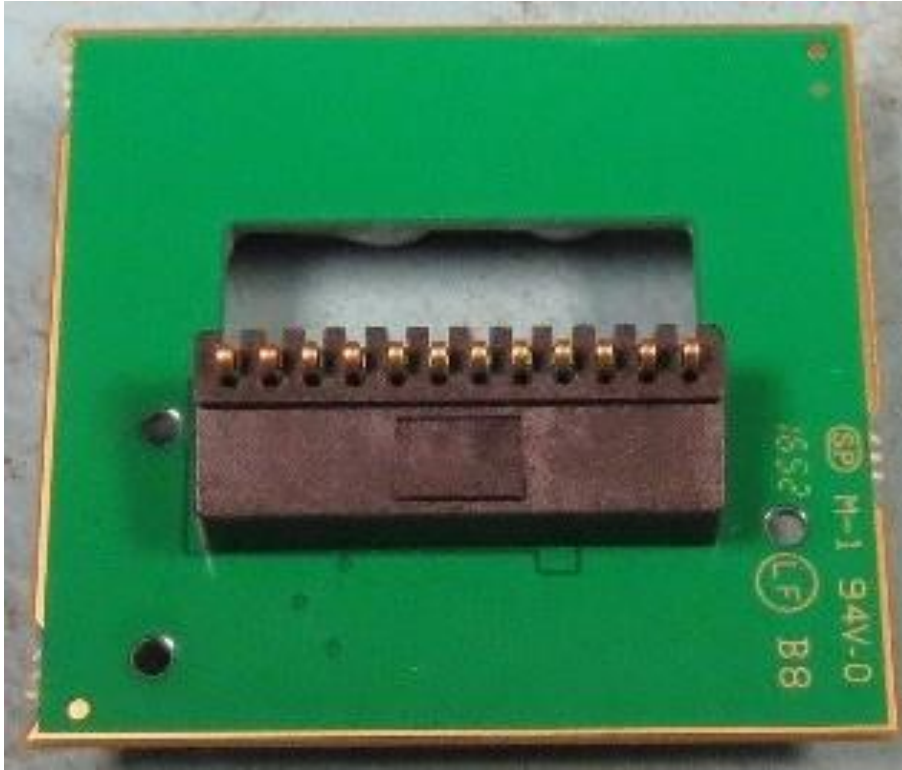


Rogers Labs, Inc.
4405 West 259th Terrace
Louisburg, KS 66053
Phone/Fax: (913) 837-3214
Revision 1

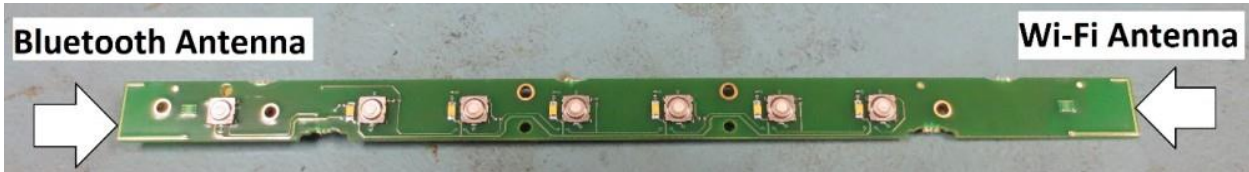
Garmin International, Inc.
Model: A03187
Test #: 170117
Test to: CFR47 15C, RSS-210, RSS-247
File: A03187 Short Term Conf IntPho

SN's: FF11 / FF12-2nd
FCC ID: IPH-03187
IC: 1792A-03187
Date: February 11, 2017
Page 2 of 4

Mount board back



Button front with antennas



Button Board

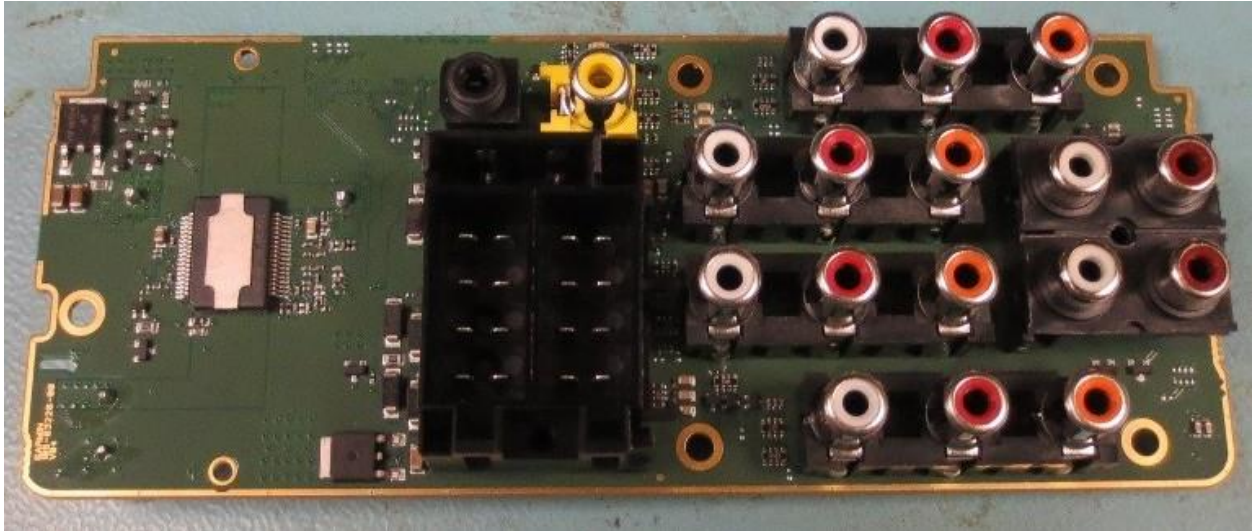


Rogers Labs, Inc.
4405 West 259th Terrace
Louisburg, KS 66053
Phone/Fax: (913) 837-3214
Revision 1

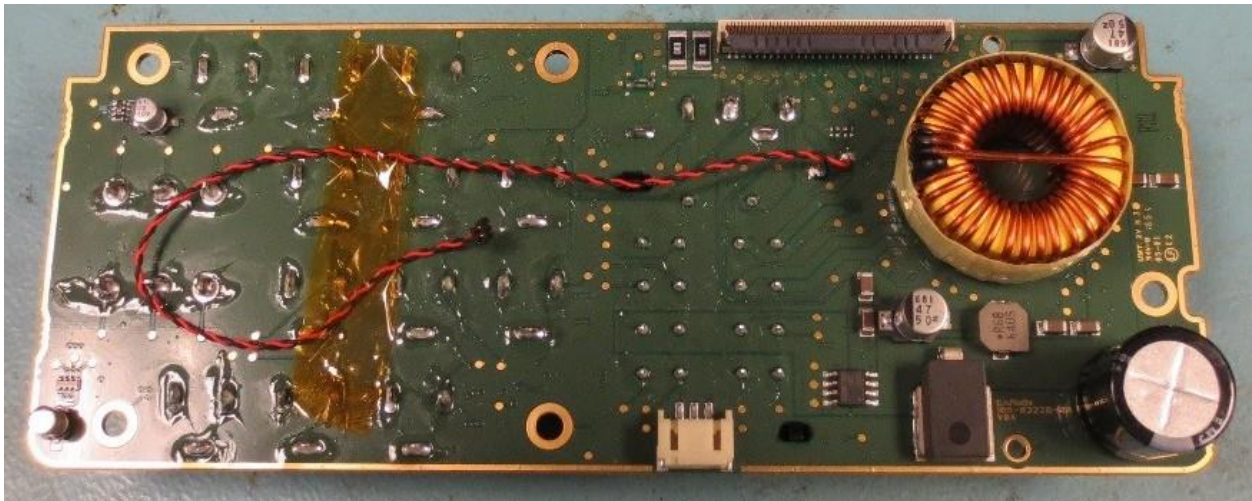
Garmin International, Inc.
Model: A03187
Test #: 170117
Test to: CFR47 15C, RSS-210, RSS-247
File: A03187 Short Term Conf IntPho

SN's: FF11 / FF12-2nd
FCC ID: IPH-03187
IC: 1792A-03187
Date: February 11, 2017
Page 3 of 4

Connector Board



Connector Board



Rogers Labs, Inc.
4405 West 259th Terrace
Louisburg, KS 66053
Phone/Fax: (913) 837-3214
Revision 1

Garmin International, Inc.
Model: A03187
Test #: 170117
Test to: CFR47 15C, RSS-210, RSS-247
File: A03187 Short Term Conf IntPho

SN's: FF11 / FF12-2nd
FCC ID: IPH-03187
IC: 1792A-03187
Date: February 11, 2017
Page 4 of 4