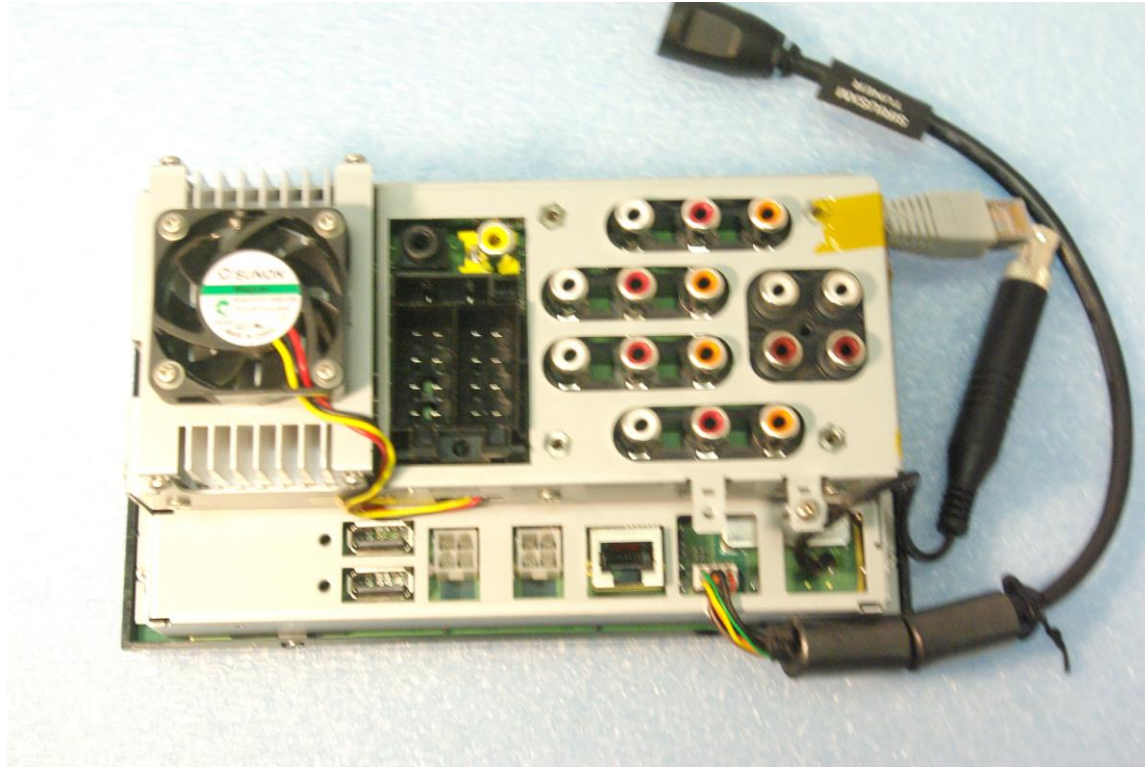


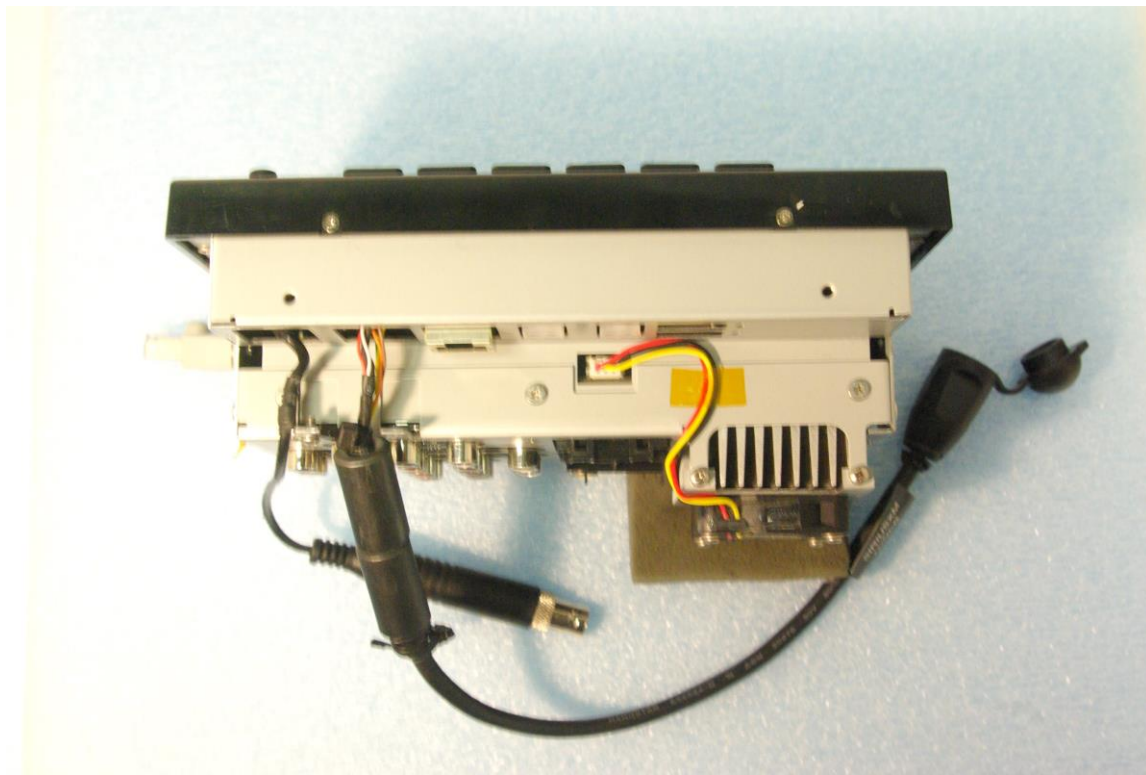
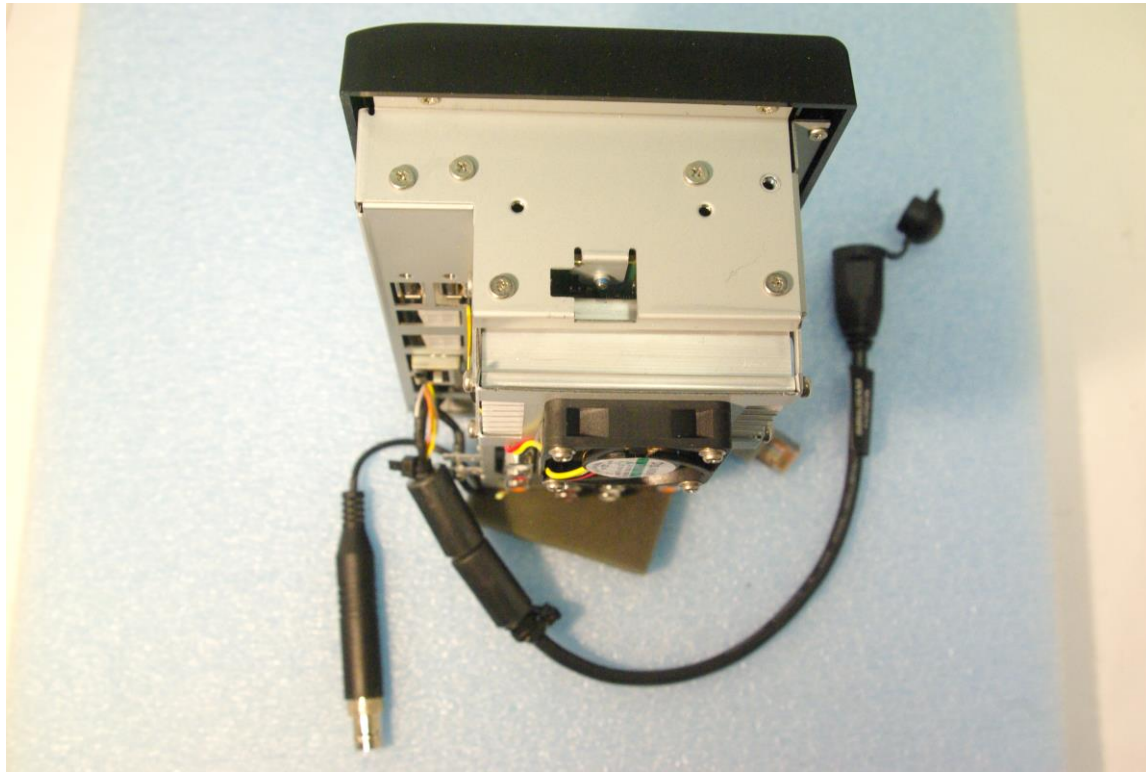
External photographs of equipment under test



Rogers Labs, Inc.  
4405 West 259<sup>th</sup> Terrace  
Louisburg, KS 66053  
Phone/Fax: (913) 837-3214  
Revision 1

Garmin International, Inc.  
Model: A03187  
Test #: 170117  
Test to: CFR47 15C, RSS-210, RSS-247  
File: A03187 Short Term Conf ExtPho

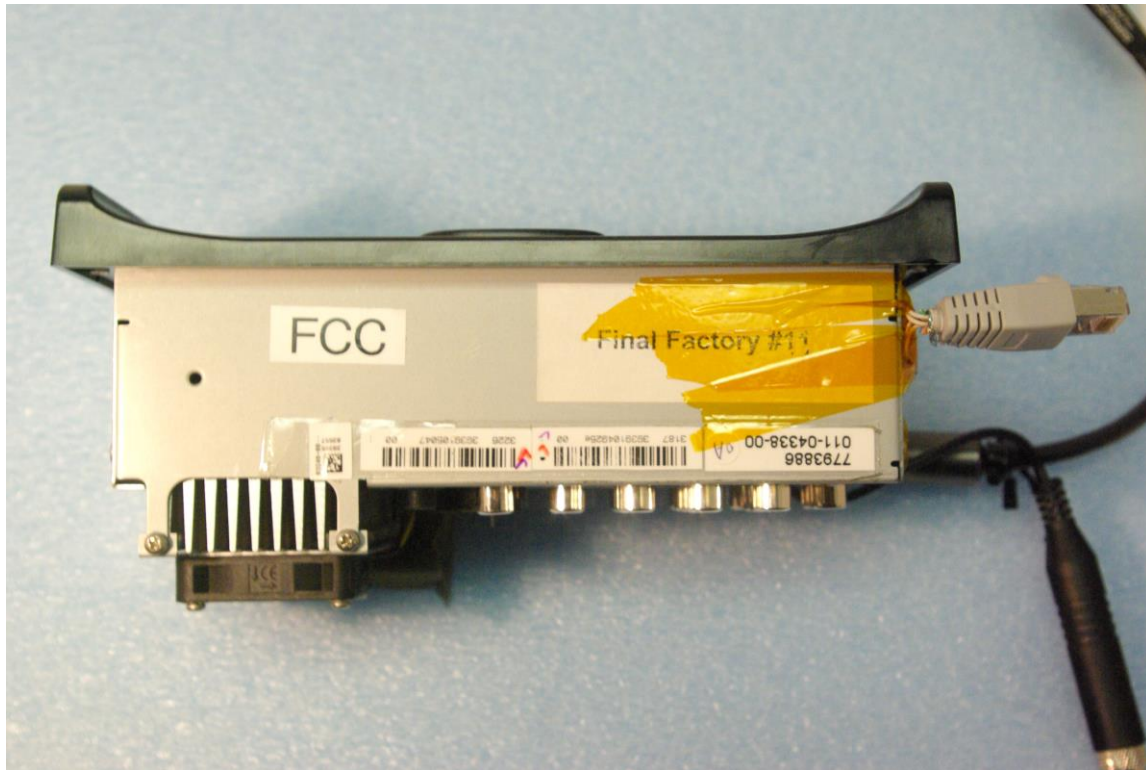
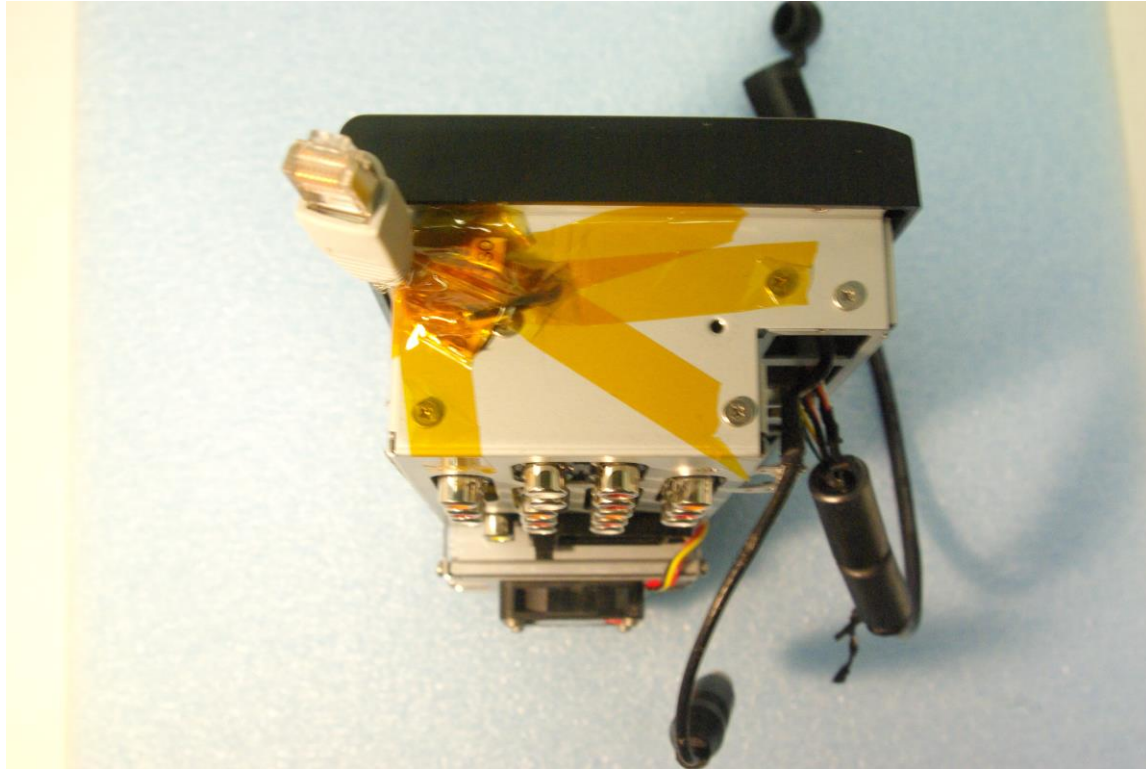
SN's: FF11 / FF12-2nd  
FCC ID: IPH-03187  
IC: 1792A-03187  
Date: February 11, 2017  
Page 1 of 4



Rogers Labs, Inc.  
4405 West 259<sup>th</sup> Terrace  
Louisburg, KS 66053  
Phone/Fax: (913) 837-3214  
Revision 1

Garmin International, Inc.  
Model: A03187  
Test #: 170117  
Test to: CFR47 15C, RSS-210, RSS-247  
File: A03187 Short Term Conf ExtPho

SN's: FF11 / FF12-2nd  
FCC ID: IPH-03187  
IC: 1792A-03187  
Date: February 11, 2017  
Page 2 of 4



Rogers Labs, Inc.  
4405 West 259<sup>th</sup> Terrace  
Louisburg, KS 66053  
Phone/Fax: (913) 837-3214  
Revision 1

Garmin International, Inc.  
Model: A03187  
Test #: 170117  
Test to: CFR47 15C, RSS-210, RSS-247  
File: A03187 Short Term Conf ExtPho

SN's: FF11 / FF12-2nd  
FCC ID: IPH-03187  
IC: 1792A-03187  
Date: February 11, 2017  
Page 3 of 4

Accessory



Rogers Labs, Inc.  
4405 West 259<sup>th</sup> Terrace  
Louisburg, KS 66053  
Phone/Fax: (913) 837-3214  
Revision 1

Garmin International, Inc.  
Model: A03187  
Test #: 170117  
Test to: CFR47 15C, RSS-210, RSS-247  
File: A03187 Short Term Conf ExtPho

SN's: FF11 / FF12-2nd  
FCC ID: IPH-03187  
IC: 1792A-03187  
Date: February 11, 2017  
Page 4 of 4