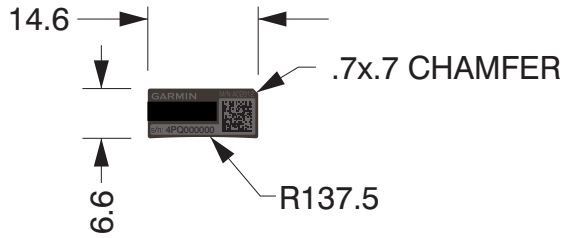


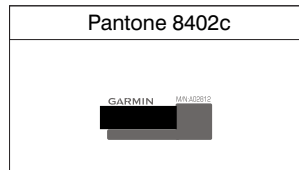
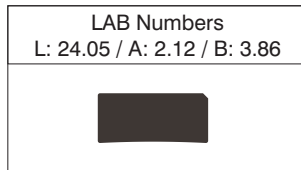
**SPECIFICATION
CONTROL
DRAWING**

REVISIONS			
REV.	DATE	DESCRIPTION	APPRVD.
2	11/12/15	UPDATE M/N NUMBER	135132
3	12/10/15	REPLACE PANTONE WITH LAB NUMBERS	136493
A	1/21/16	PRODUCTION RELEASE	138070

Dims:mm



SCALE: 1X



NOTES:

1. MATERIAL: VINYL LAMINATE, SECOND SURFACE PRINTED. BACKGROUND & NOMENCLATURE COLORS - (SEE CHARTS), SERIAL NUMBER AND BARCODE TO BE BLACK. ACRYLIC PERMANENT ADHESIVE ON BACK SIDE WITH PEEL OFF RELEASE LINER. TOTAL PACKAGE THICKNESS EXCLUDING RELEASE LINER IS 0.05-0.13.
2. 9 DIGIT SERIAL NUMBER TO BE PRINTED SEQUENTIALLY AS SHOWN (2D DATA MATRIX BARCODE WITH SEPARATE MATCHING HUMAN READABLE CODE). ALSO PRINT ADDITIONAL TAGS (30 X 7.5) IN QTY INDICATED (BARCODE 39 WITH HUMAN READABLE ONLY). ALL S/N INFO PRINTED WITH INDELIBLE BLACK INK. SERIAL NUMBER RANGE FOR THIS ITEM: 4PQ000000-4PQ999999 AS INDICATED ON GARMIN PURCHASE ORDER.
3. MAIN TAG AND ADDITIONAL TAG ARE SUPPLIED ON ONE ROLL WITH EQUIVALENT SERIAL NO.S ADJACENT TO EACH OTHER. ALL TAGS ARE "KISS CUT" ON ROLL.
4. PARTS TO BE FABRICATED USING DIGITAL CORELDRAW FILE.
5. THIS PART SHALL COMPLY WITH GARMIN BANNED & RESTRICTED SUBSTANCES DOCUMENT GPN 001-00211-00.
6. THIS PART SHALL NOT CONTAIN HAZARDOUS SUBSTANCES EXCEEDING LEVELS DEFINED BY EU DIRECTIVE 2011/65/EU (RoHS 2).

<p>CONFIDENTIAL</p> <p>This drawing and the specifications contained herein are the property of Garmin Ltd. or its subsidiaries and may not be reproduced or used in whole or in part as the basis for manufacture or sale of products without written permission.</p>		<p>GARMIN®</p> <p>Garmin Ltd. or its subsidiaries c/o Garmin International, Inc. 1200 E. 151st Street Olathe, Kansas 66062 U.S.A.</p>	
DRWN.	RNL	DATE	9/23/15
<p>TOLERANCE UNLESS NOTED OTHERWISE</p> <p>.XX +/- .010", .25 mm .XXX +/- .005", .13 mm HOLES +/- .003", .08 mm ANGLES +/- 0 DEG / 30 MIN</p>		<p>TITLE</p> <p>Tag, S/N, </p>	
SIZE	A	DWG. NO.	161-03914-00
SCALE	1X	SHT.	1 OF 1
		REV.	A

Part Information

GPN:	161-03914-00
Description:	Tag, S/N, [REDACTED]
Part Type:	Label
Lifecycle Phase:	Production
Rev:	A ECO#138070

Item Attribution

Document Review Required:	
Item Notes:	
Preferred Rating:	
ESD Sensitive:	
Moisture Sensitive:	
Limited Shelf Life:	
Magnetic Sensitive:	