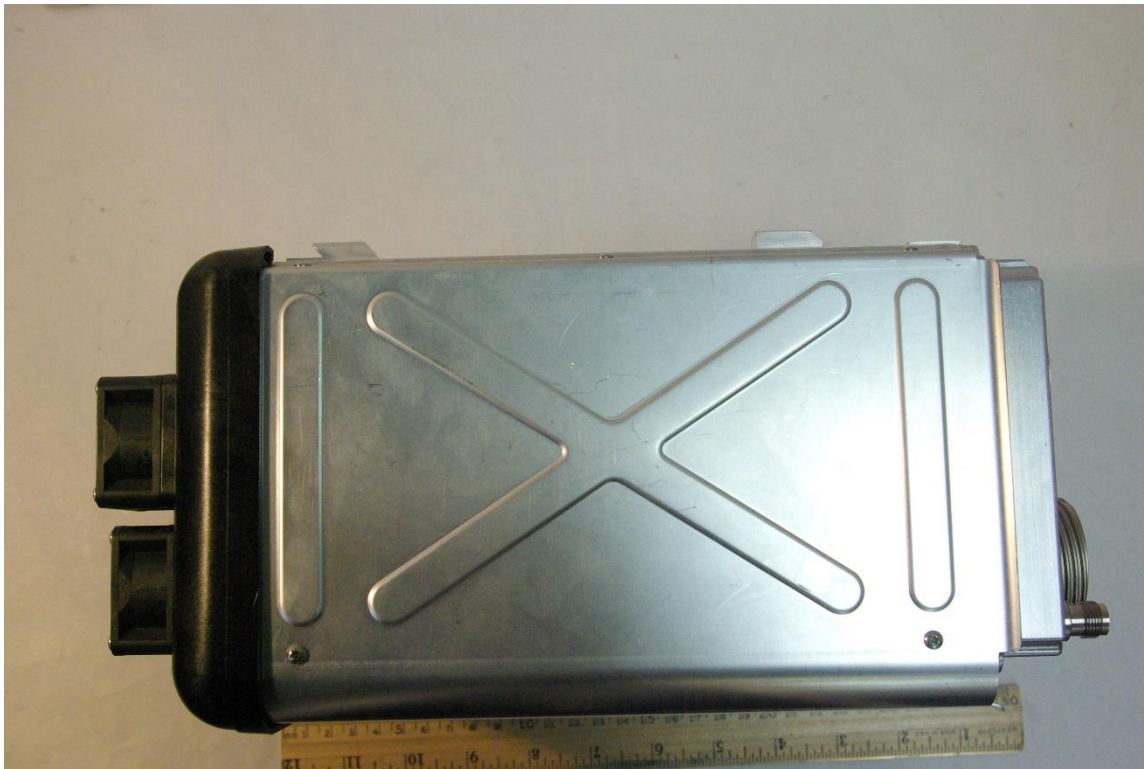


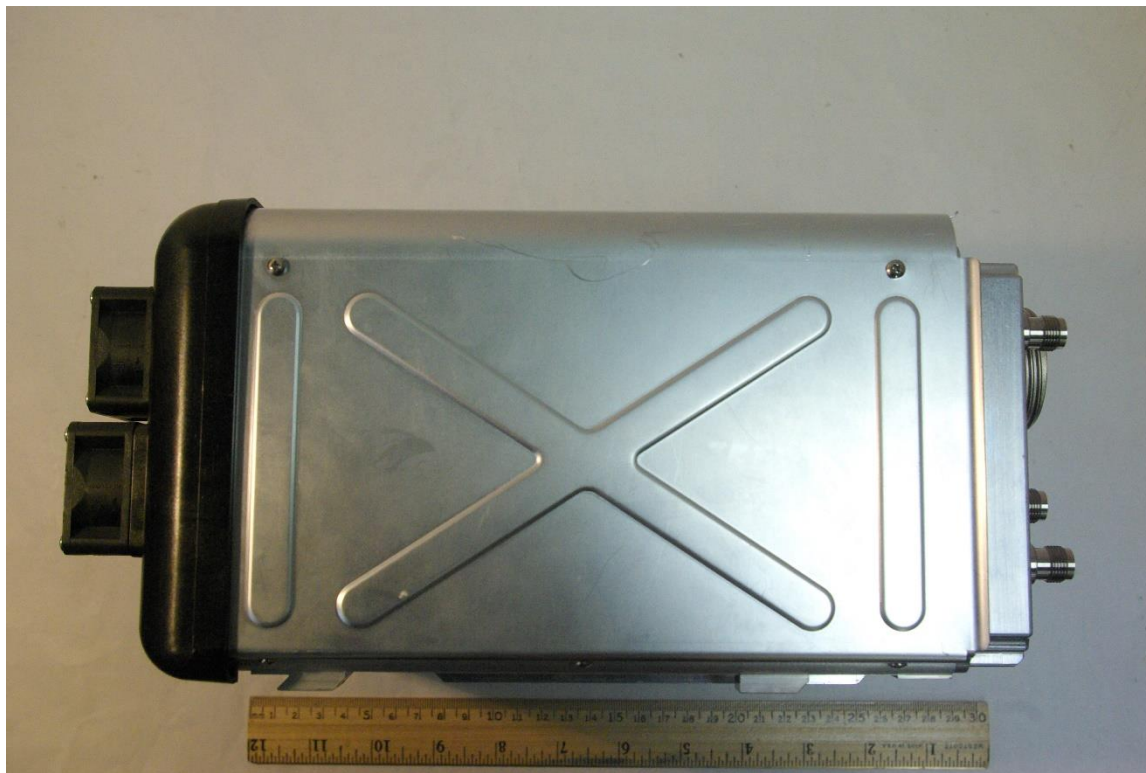
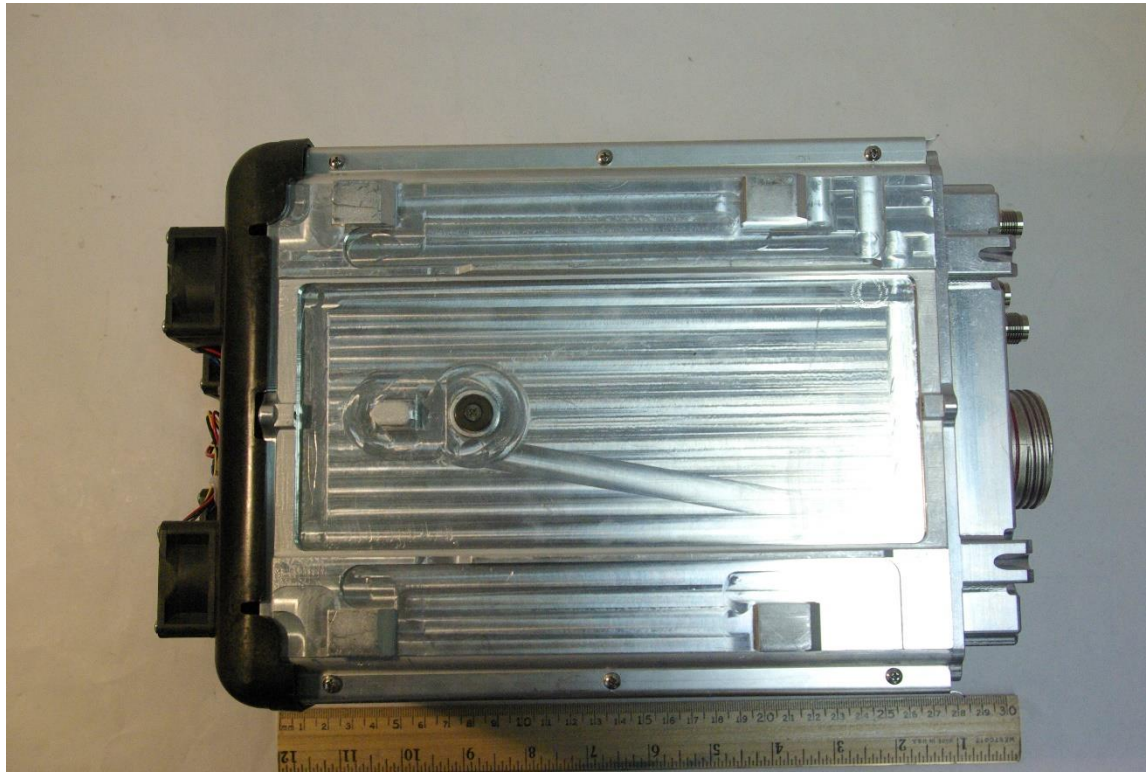
External photographs of equipment under test



Rogers Labs, Inc.
4405 West 259th Terrace
Louisburg, KS 66053
Phone/Fax: (913) 837-3214
Revision 1

Garmin International, Inc.
Model: GMN-01078
Test #: 170102 GPN: 011-03013-00
Test to: FCC Parts 2, 15 and 87, RSS-141
File: GMN01078 Short Term Conf ExtPho

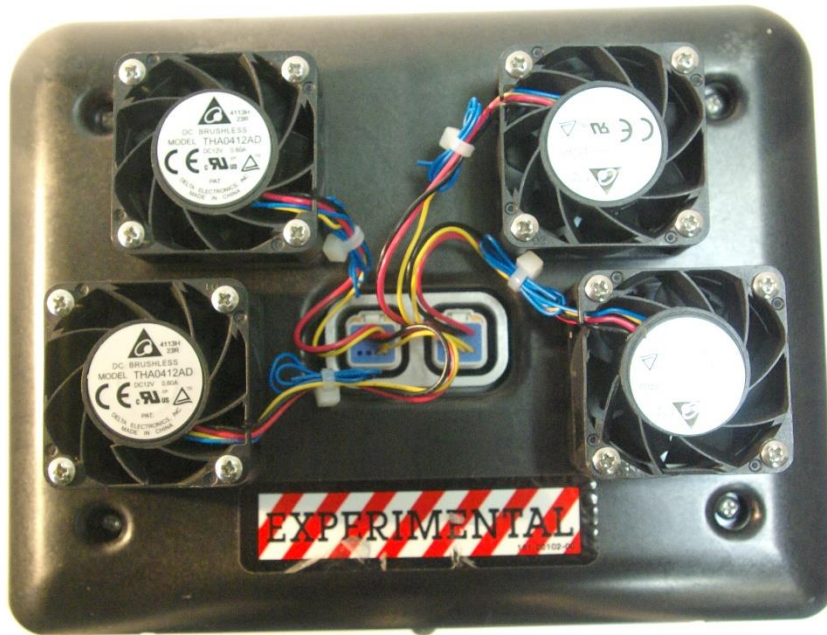
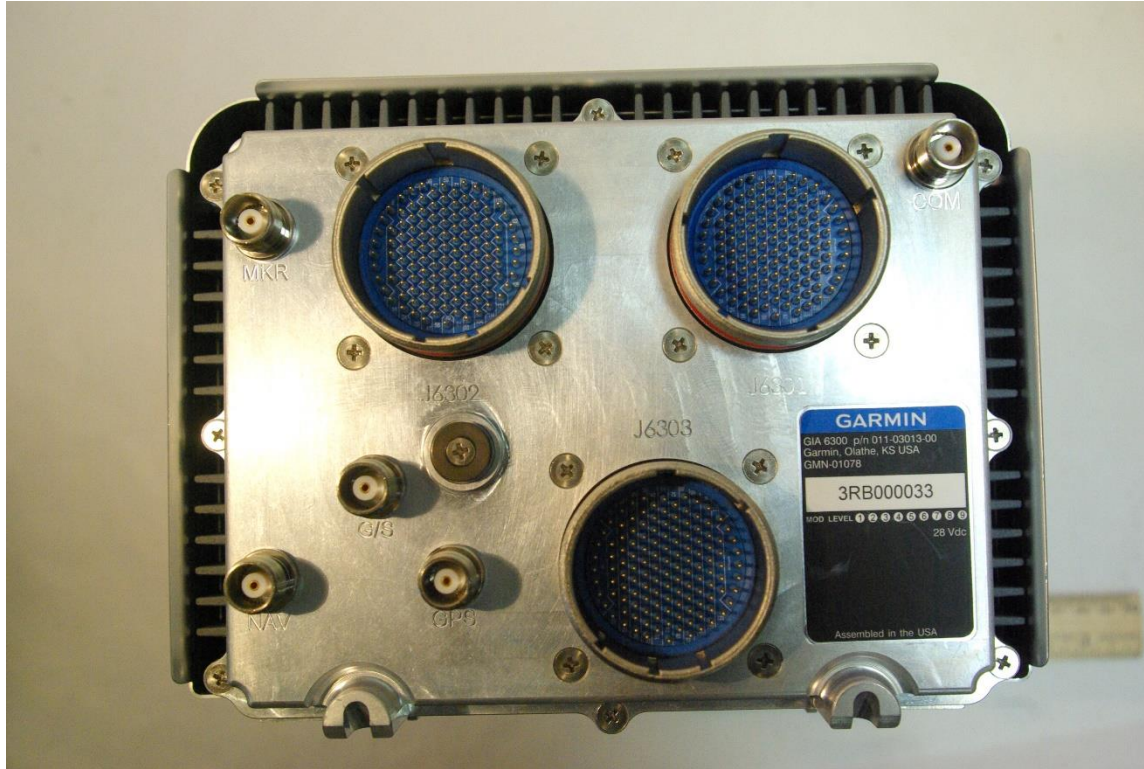
SN: 3RB000033
FCC ID: IPH-0212800
IC: 1792A-0212800
Date: April 4, 2017
Page 1 of 3



Rogers Labs, Inc.
4405 West 259th Terrace
Louisburg, KS 66053
Phone/Fax: (913) 837-3214
Revision 1

Garmin International, Inc.
Model: GMN-01078
Test #: 170102
Test to: FCC Parts 2, 15 and 87, RSS-141
File: GMN01078 Short Term Conf ExtPho

SN: 3RB000033
FCC ID: IPH-0212800
IC: 1792A-0212800
Date: April 4, 2017
Page 2 of 3



Rogers Labs, Inc.
 4405 West 259th Terrace
 Louisburg, KS 66053
 Phone/Fax: (913) 837-3214
 Revision 1

Garmin International, Inc.
 Model: GMN-01078
 Test #: 170102
 Test to: FCC Parts 2, 15 and 87, RSS-141
 File: GMN01078 Short Term Conf ExtPho

SN: 3RB000033
 FCC ID: IPH-0212800
 IC: 1792A-0212800
 Date: April 4, 2017
 Page 3 of 3