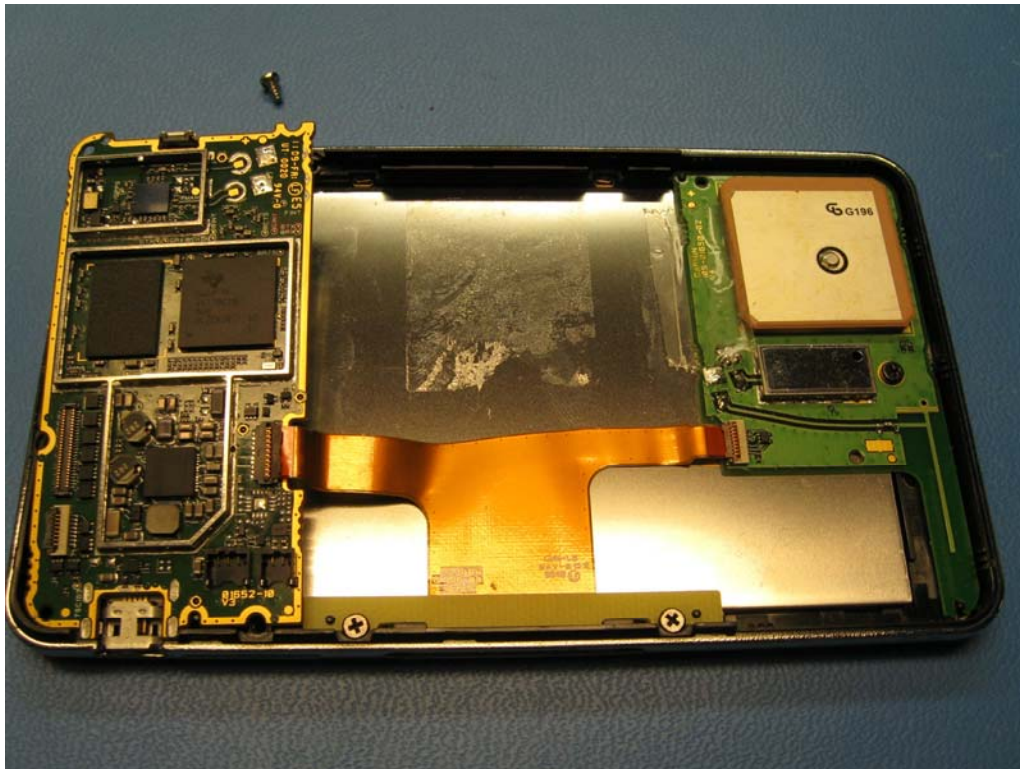


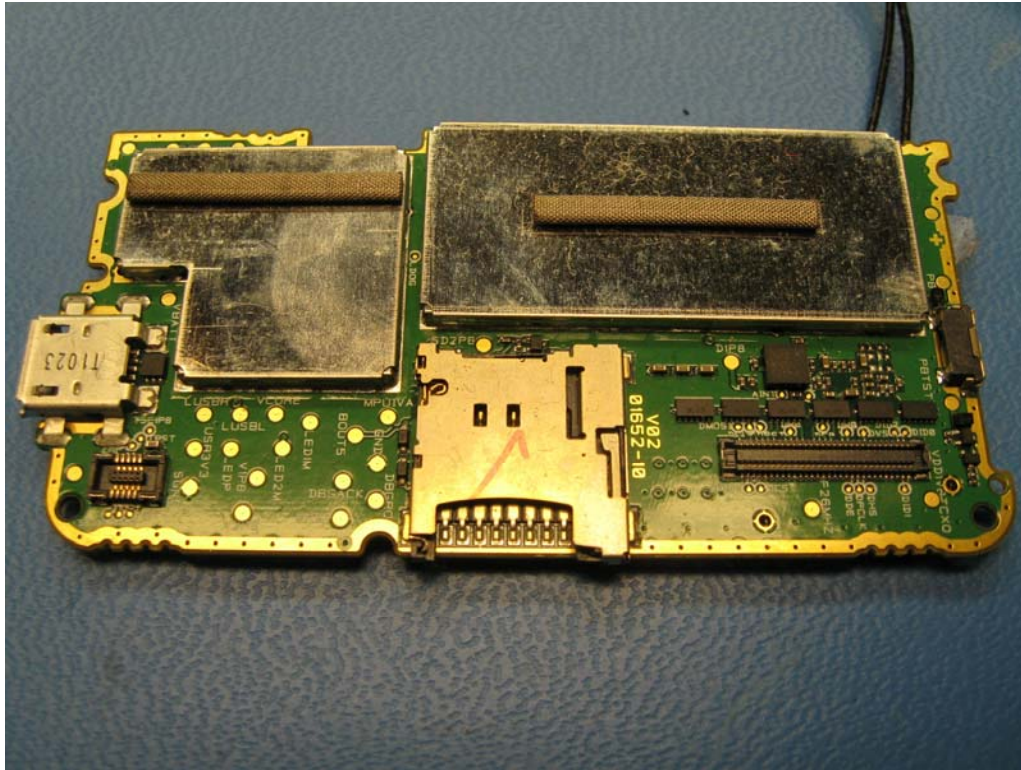
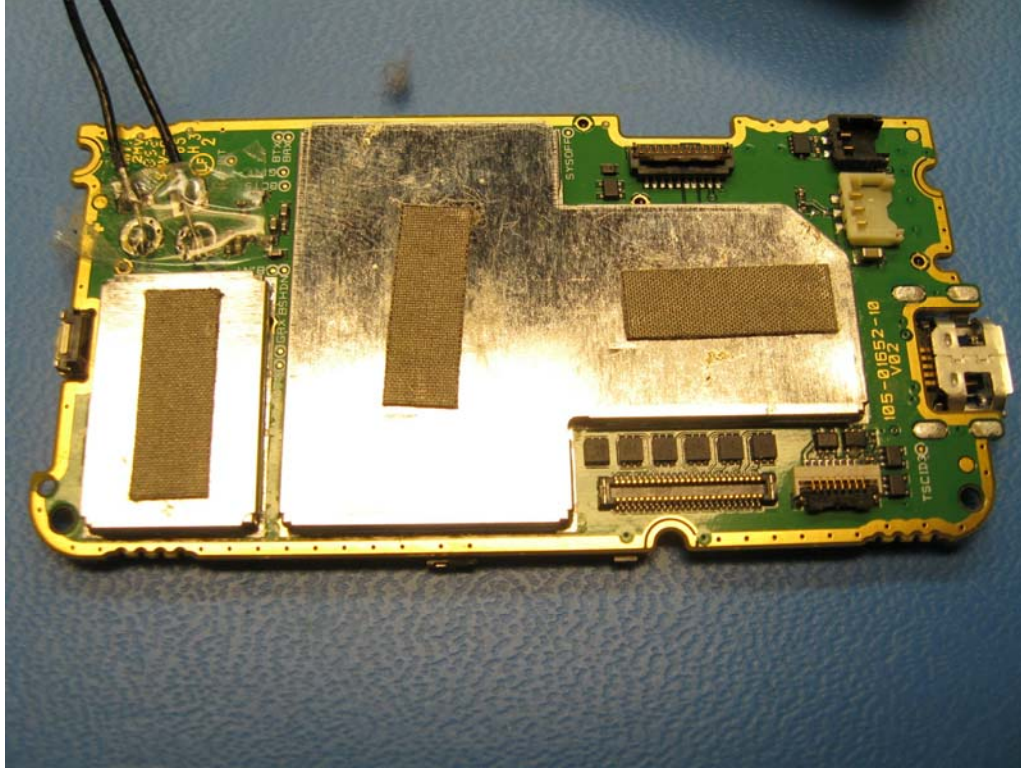
Internal photographs of equipment under test



Rogers Labs, Inc.
4405 West 259th Terrace
Louisburg, KS 66053
Phone/Fax: (913) 837-3214
Revision 1

Garmin International, Inc.
Model: A1B-3490LM
Test #: 110609
Test to: FCC Parts 2 and 15.249, RSS-210
File: IntPho A1B3490LM

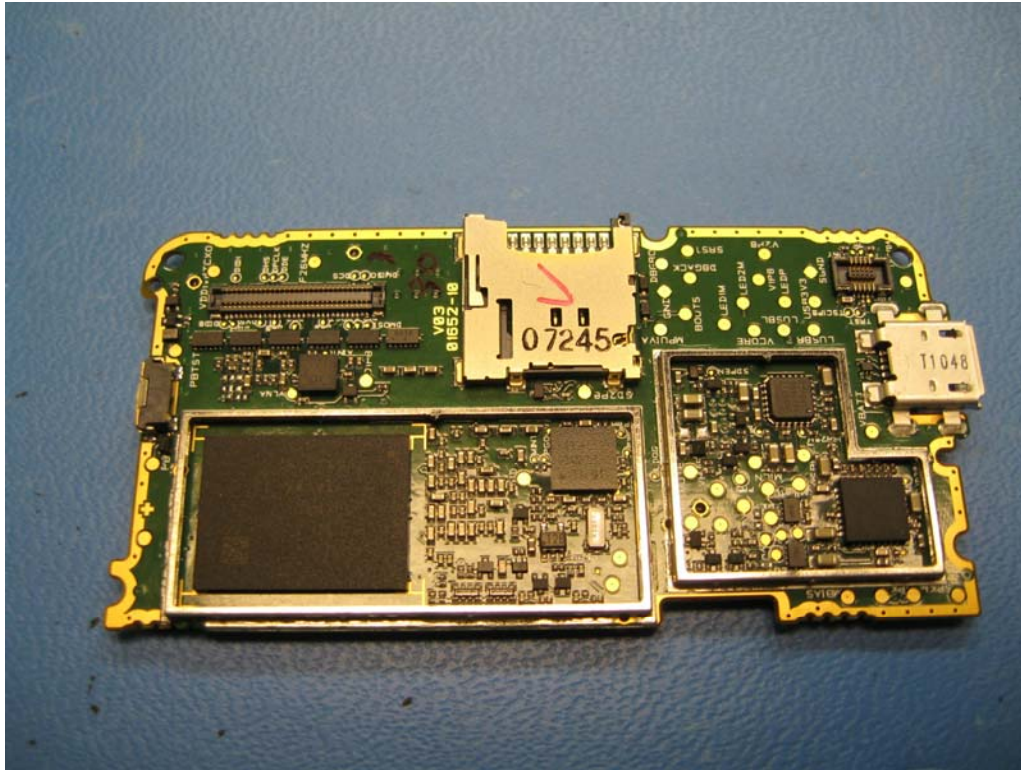
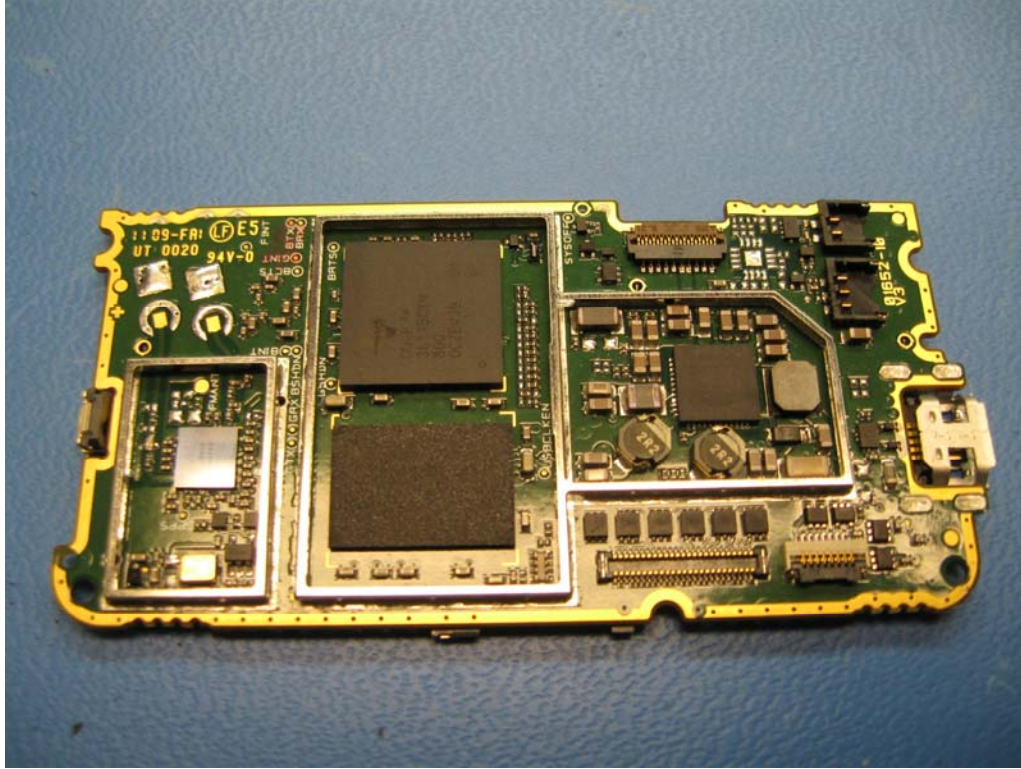
FCC ID: IPH-01650
IC: 1792A-01650
SN: H3280
Date: August 22, 2011
Page 1 of 4



Rogers Labs, Inc.
4405 West 259th Terrace
Louisburg, KS 66053
Phone/Fax: (913) 837-3214
Revision 1

Garmin International, Inc.
Model: A1B-3490LM
Test #: 110609
Test to: FCC Parts 2 and 15.249, RSS-210
File: IntPho A1B3490LM

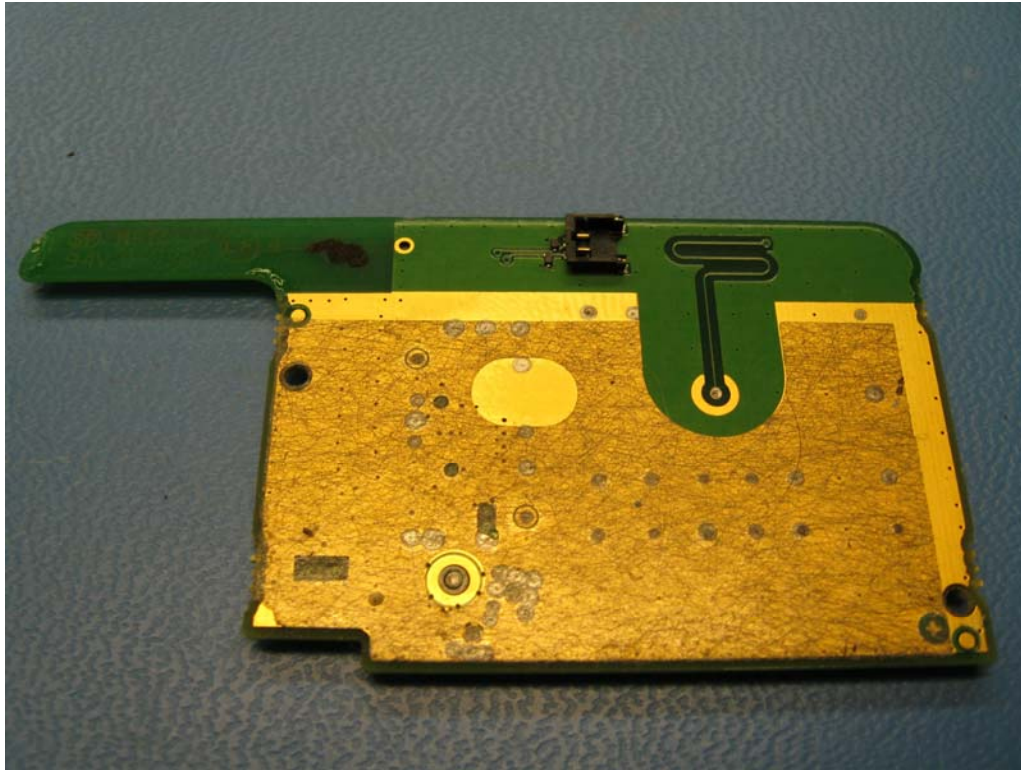
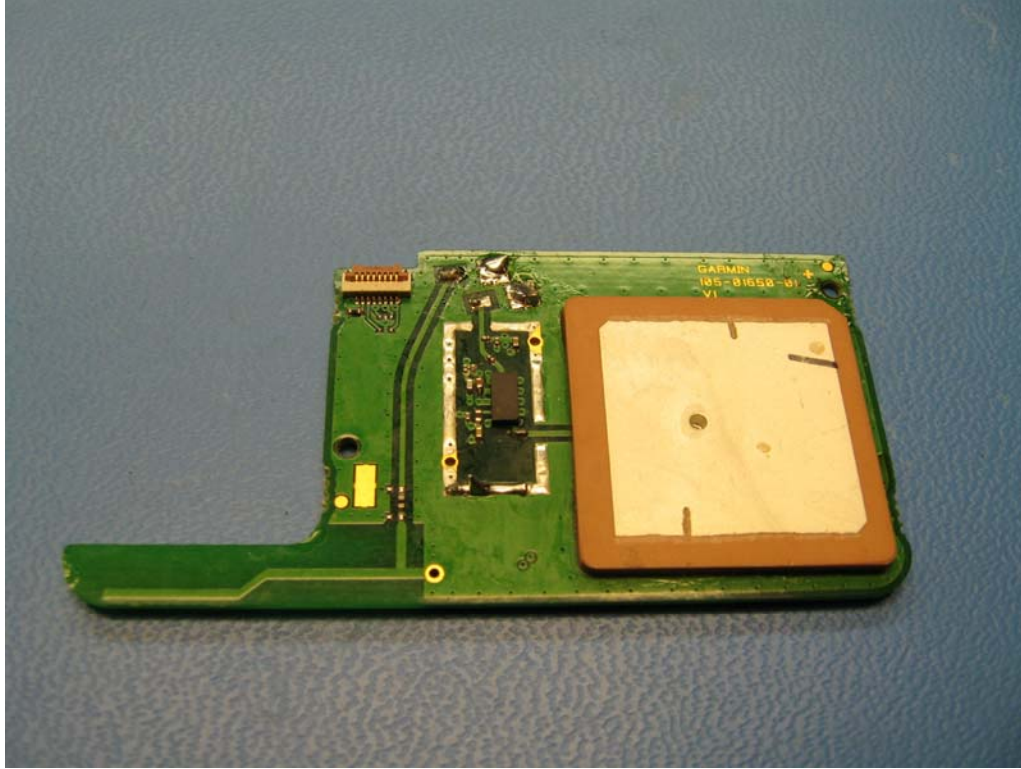
FCC ID: IPH-01650
IC: 1792A-01650
SN: H3280
Date: August 22, 2011
Page 2 of 4



Rogers Labs, Inc.
4405 West 259th Terrace
Louisburg, KS 66053
Phone/Fax: (913) 837-3214
Revision 1

Garmin International, Inc.
Model: A1B-3490LM
Test #: 110609
Test to: FCC Parts 2 and 15.249, RSS-210
File: IntPho A1B3490LM

FCC ID: IPH-01650
IC: 1792A-01650
SN: H3280
Date: August 22, 2011
Page 3 of 4



Rogers Labs, Inc.
4405 West 259th Terrace
Louisburg, KS 66053
Phone/Fax: (913) 837-3214
Revision 1

Garmin International, Inc.
Model: A1B-3490LM
Test #: 110609
Test to: FCC Parts 2 and 15.249, RSS-210
File: IntPho A1B3490LM

FCC ID: IPH-01650
IC: 1792A-01650
SN: H3280
Date: August 22, 2011
Page 4 of 4