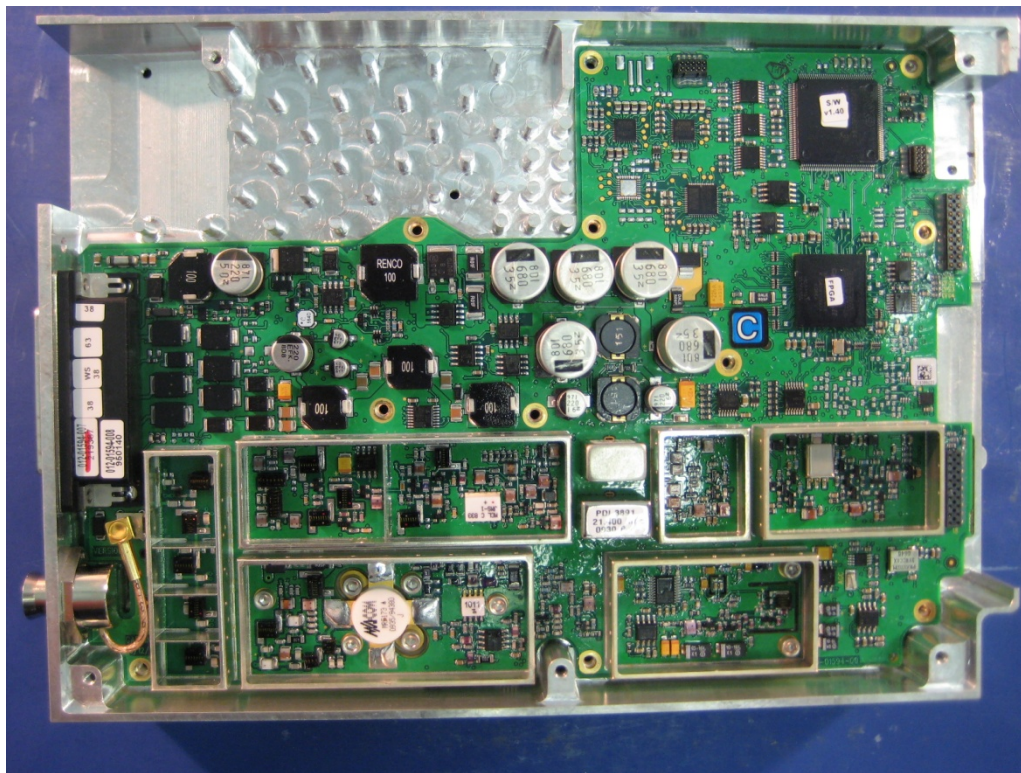
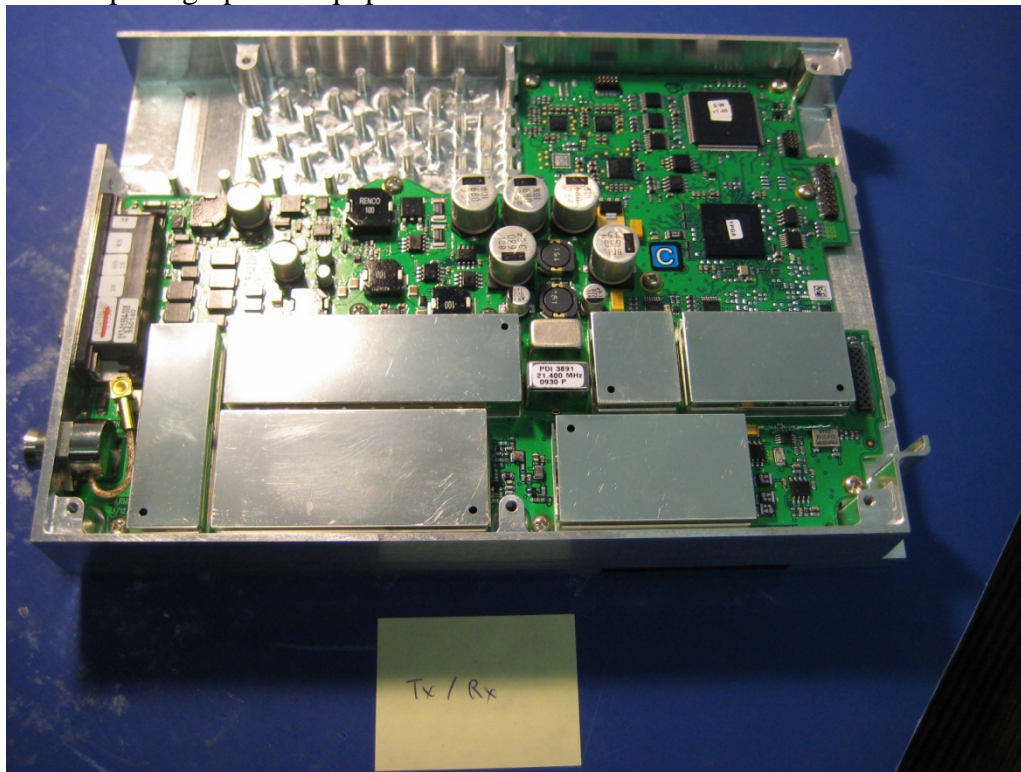


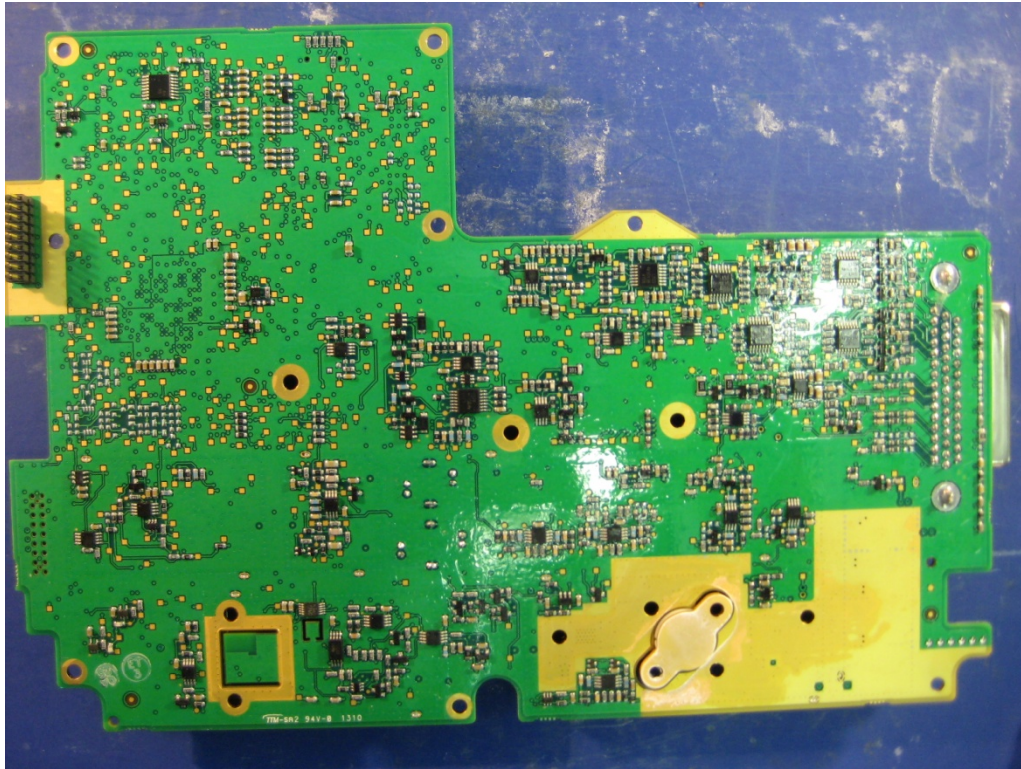
Internal photographs of equipment under test



Rogers Labs, Inc.  
4405 West 259<sup>th</sup> Terrace  
Louisburg, KS 66053  
Phone/Fax: (913) 837-3214  
Revision 1

Garmin International Inc., Garmin AT, Inc  
Model: GTN 750  
Test #: 110125  
Test to: FCC Parts 2 and 15, 87 and RSS-141  
File: short Term Conf IntPho GTN750

FCC ID: IPH-01594  
IC: 1312A-01594  
SN: 1ZA000027  
Date: January 25, 2011  
Page 1 of 2



Rogers Labs, Inc.  
4405 West 259<sup>th</sup> Terrace  
Louisburg, KS 66053  
Phone/Fax: (913) 837-3214  
Revision 1

Garmin International Inc., Garmin AT, Inc  
Model: GTN 750  
Test #: 110125  
Test to: FCC Parts 2 and 15, 87 and RSS-141  
File: short Term Conf IntPho GTN750

FCC ID: IPH-01594  
IC: 1312A-01594  
SN: 1ZA000027  
Date: January 25, 2011  
Page 2 of 2