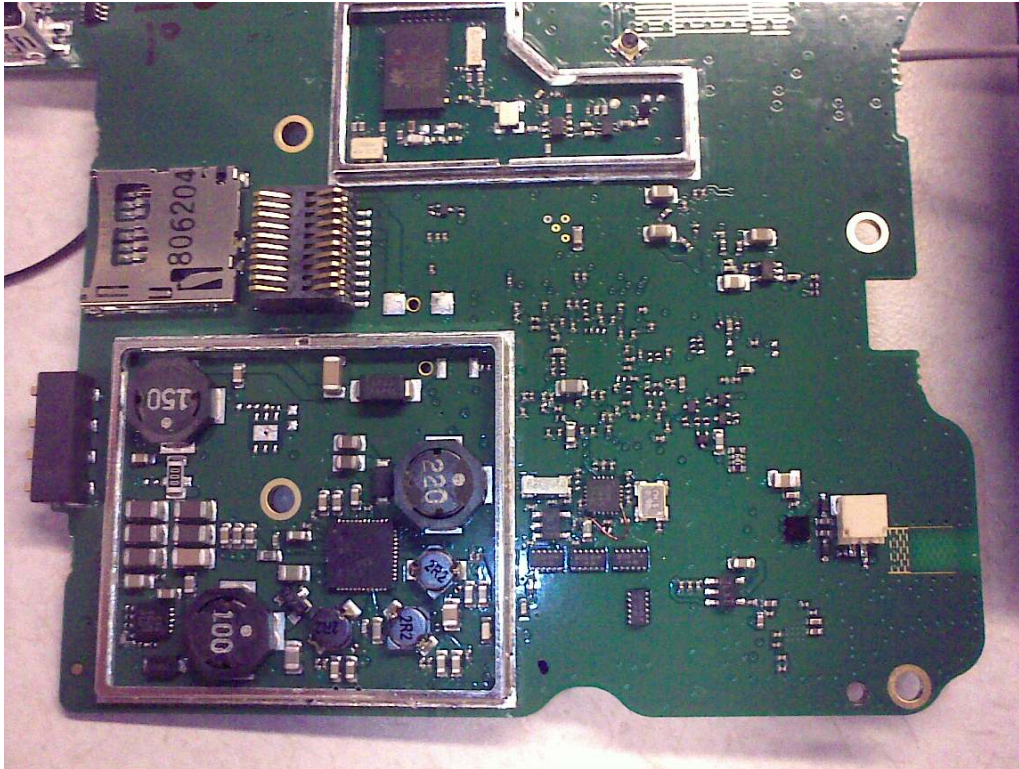
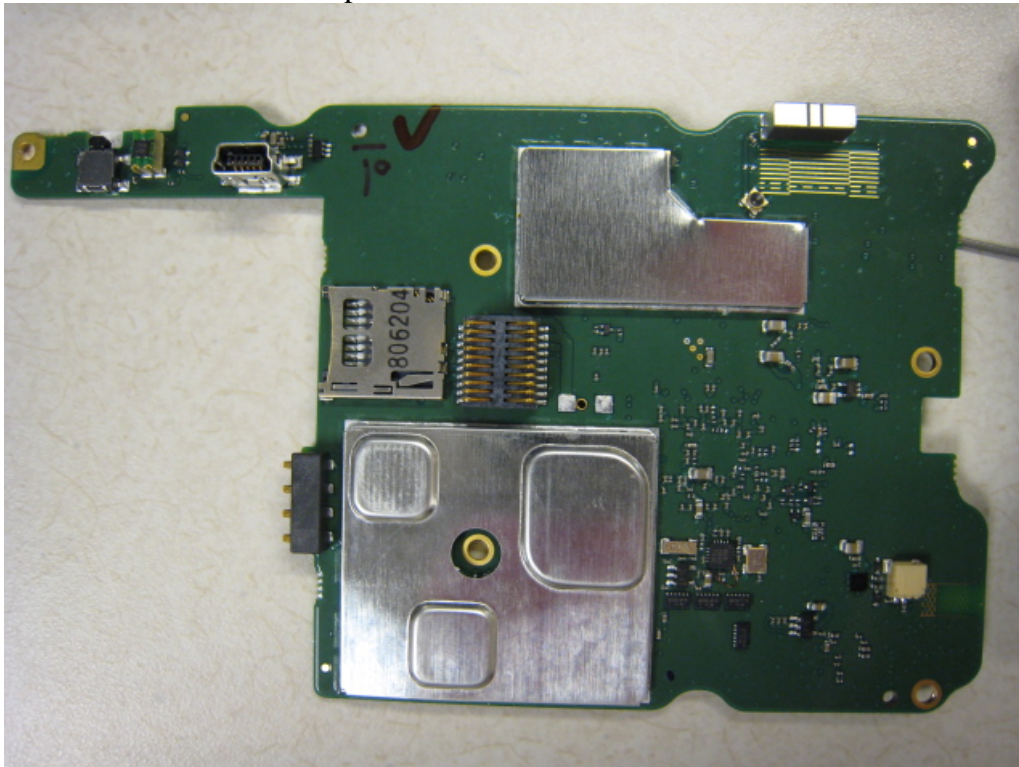


Internal Photographs

Front PCB with shield removed



Front PCB with shields in place

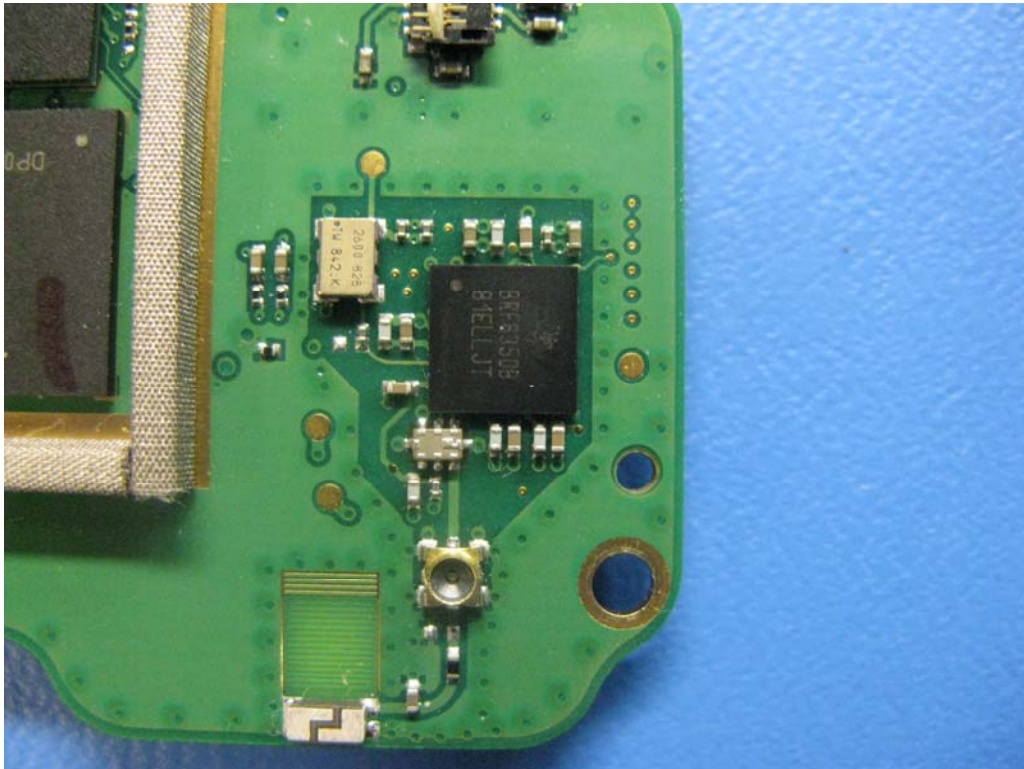
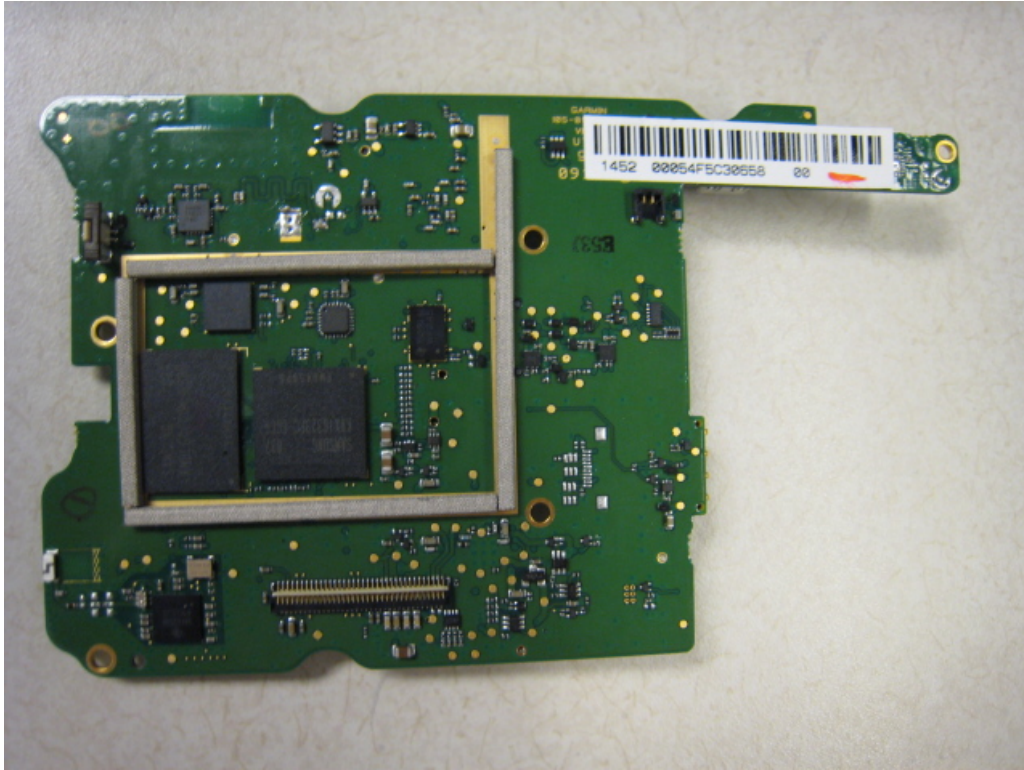


Rogers Labs, Inc.
4405 West 259th Terrace
Louisburg, KS 66053
Phone/Fax: (913) 837-3214
Revision 2

Garmin International, Inc.
Model: 010-00727-xx GPN: 010-00727-xx
Test #: 090212 SN: 1452 3535810078
Test to: CFR47 Parts 2 and 15.249, RSS-210
IntPho 01452 R2

FCC ID#: IPH-01452
IC: 1792A-01452
Page 1 of 2
Date: April 8, 2009

Bach PCB



Rogers Labs, Inc.
4405 West 259th Terrace
Louisburg, KS 66053
Phone/Fax: (913) 837-3214
Revision 2

Garmin International, Inc.
Model: 010-00727-xx GPN: 010-00727-xx
Test #: 090212 SN: 1452 3535810078
Test to: CFR47 Parts 2 and 15.249, RSS-210
IntPho 01452 R2

FCC ID#: IPH-01452
IC: 1792A-01452
Page 2 of 2
Date: April 8, 2009