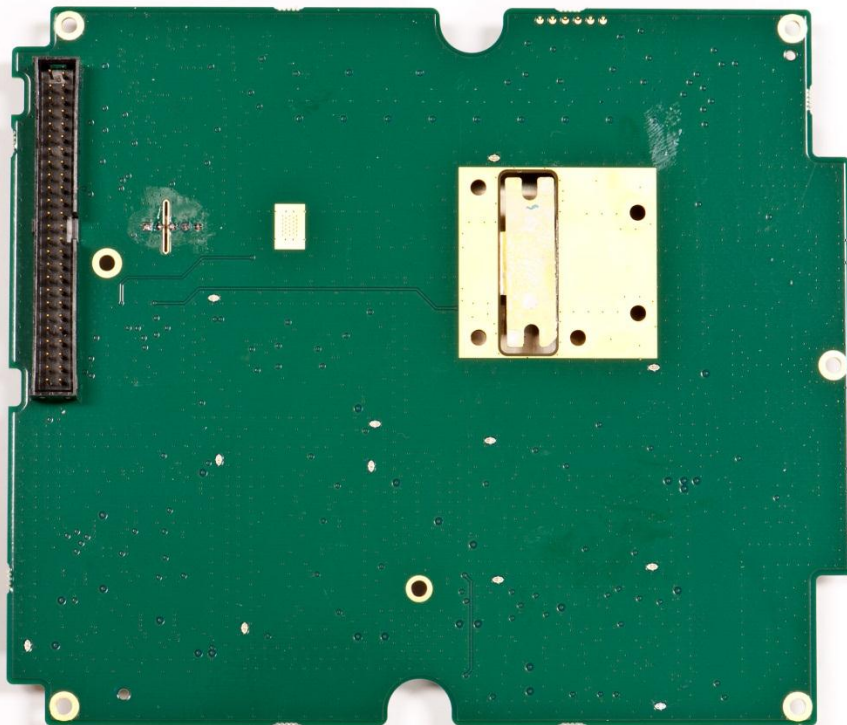
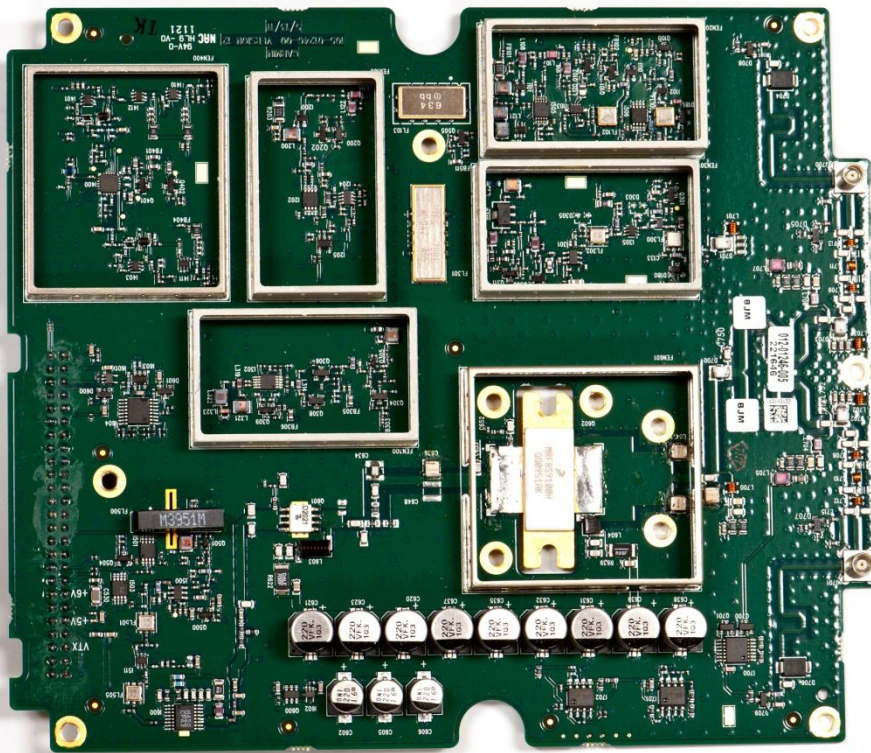


Internal Photographs
RF Board without shields

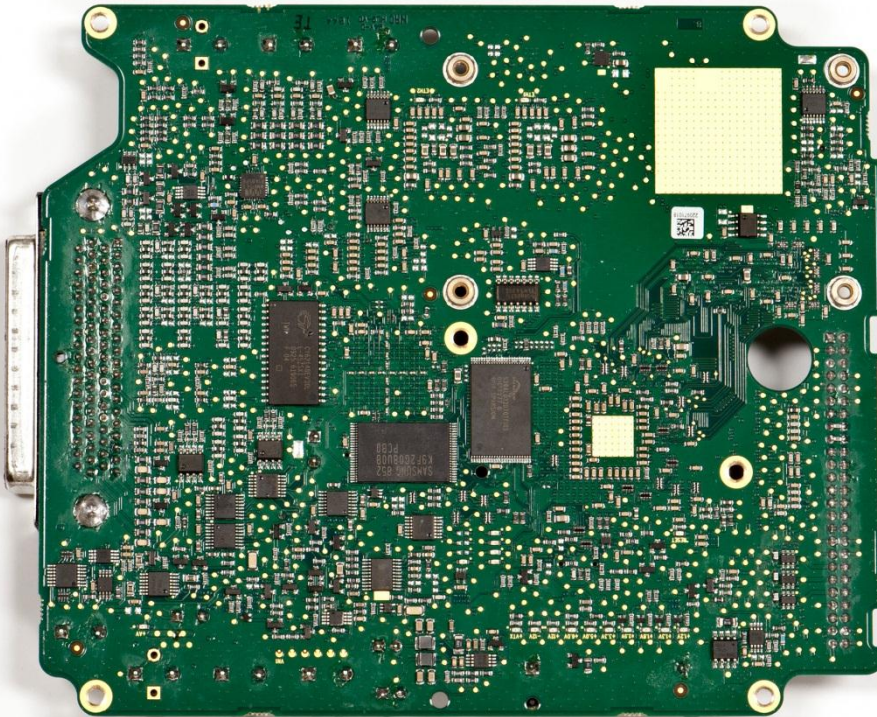
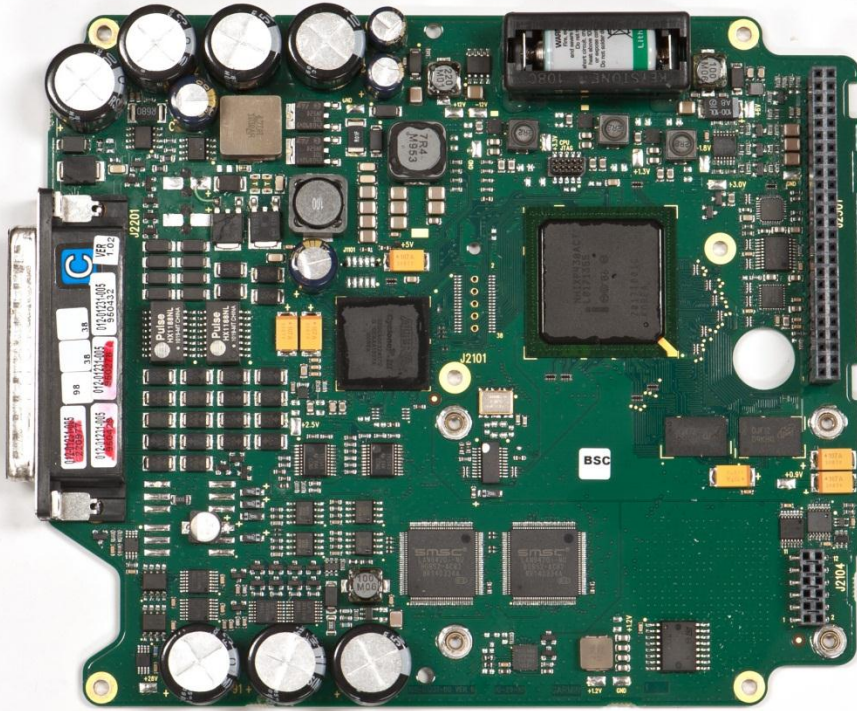


Rogers Labs, Inc.
4405 West 259th Terrace
Louisburg, KS 66053
Phone/Fax: (913) 837-3214
Revision 1

Garmin International, Inc.
Model: GMN-00862 SN: 22W000027
Test #: 111107
Test to: CFR47 Parts 2 and 87
File: Short Term Conf IntPho IPH01246

Market Label: GDL 88
FCC ID: IPH-01246
IC: 1312A-01246
Date: May 2, 2012
Page 1 of 4

Main Board

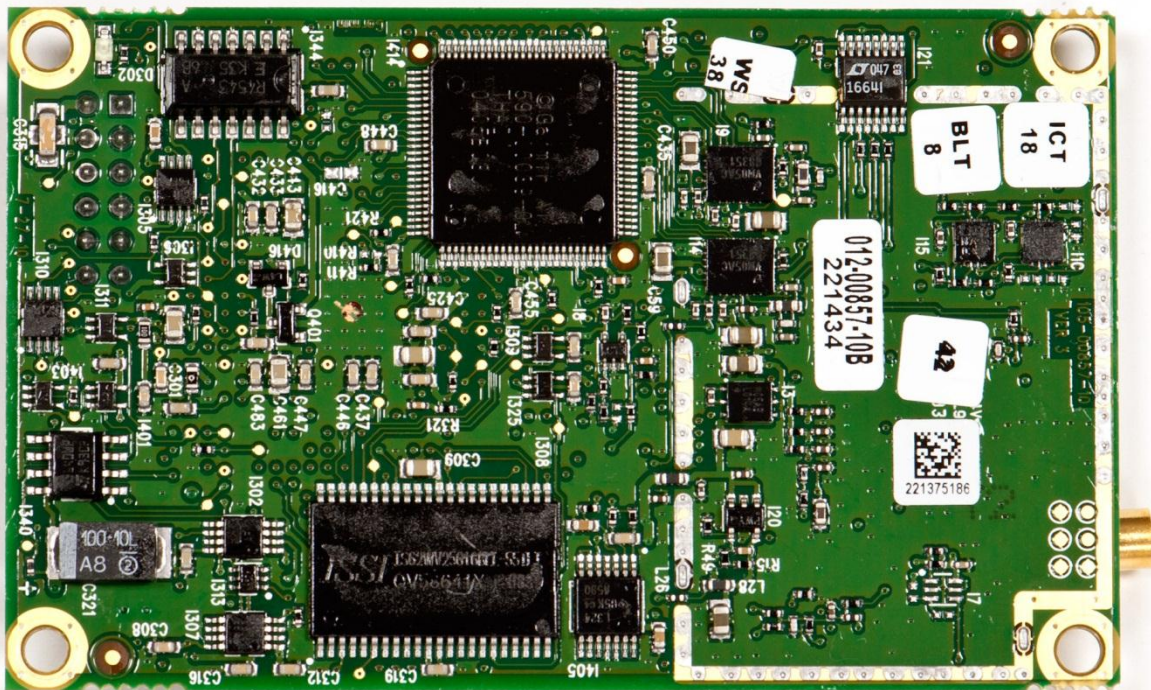
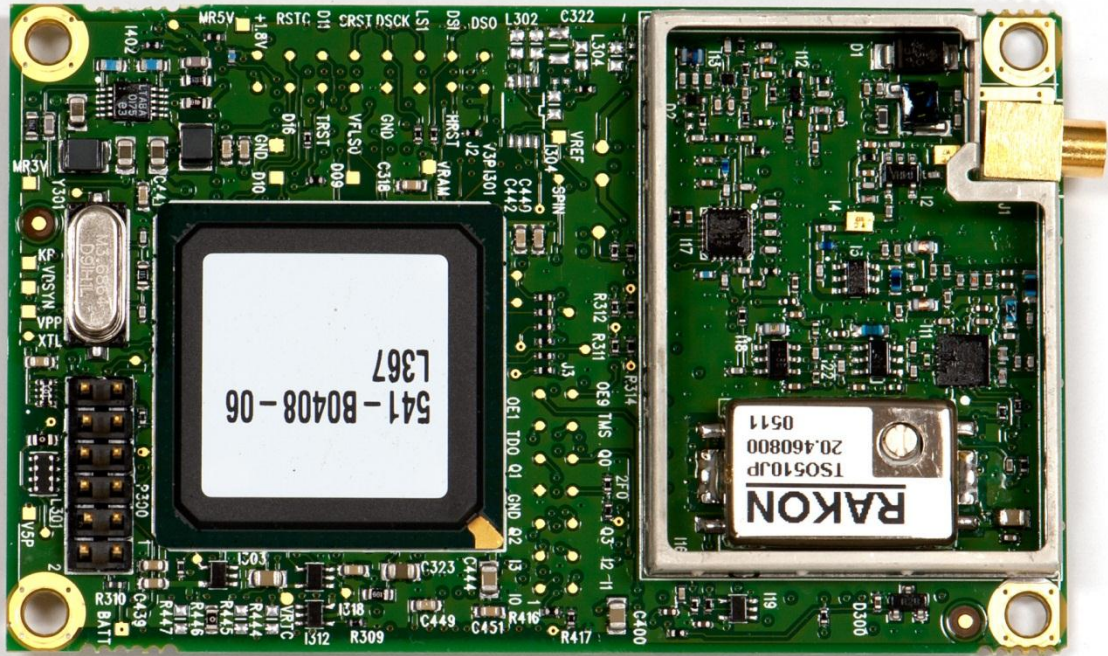


Rogers Labs, Inc.
4405 West 259th Terrace
Louisburg, KS 66053
Phone/Fax: (913) 837-3214
Revision 1

Garmin International, Inc.
Model: GMN-00862 SN: 22W000027
Test #: 111107
Test to: CFR47 Parts 2 and 87
File: Short Term Conf IntPho IPH01246

Market Label: GDL 88
FCC ID: IPH-01246
IC: 1312A-01246
Date: May 2, 2012
Page 2 of 4

WASS module without shields

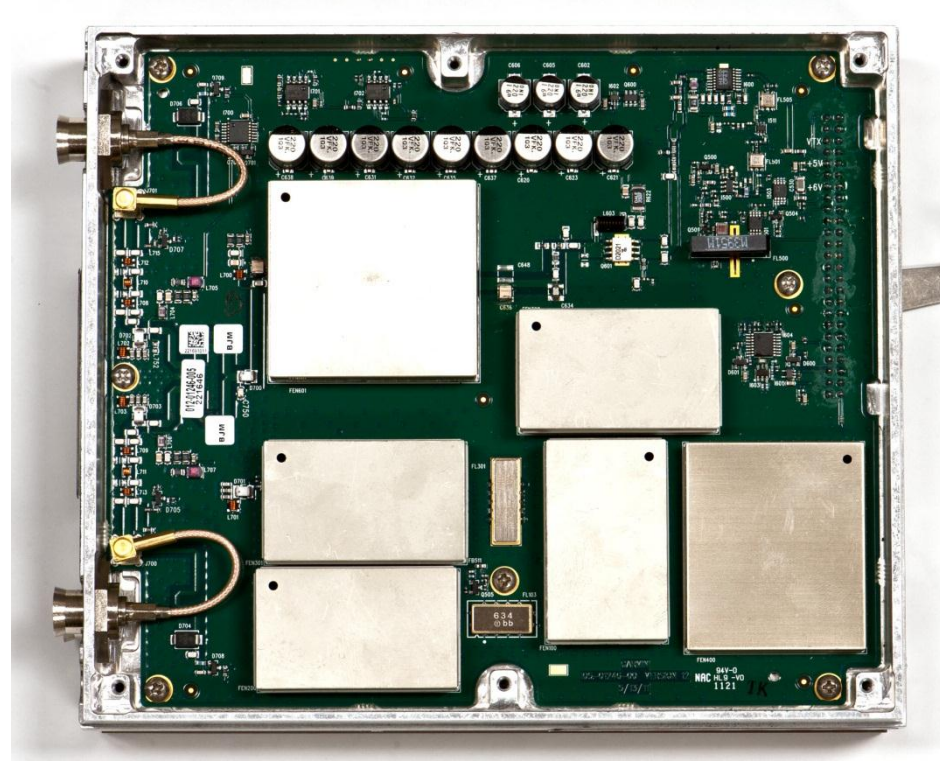


Rogers Labs, Inc.
 4405 West 259th Terrace
 Louisburg, KS 66053
 Phone/Fax: (913) 837-3214
 Revision 1

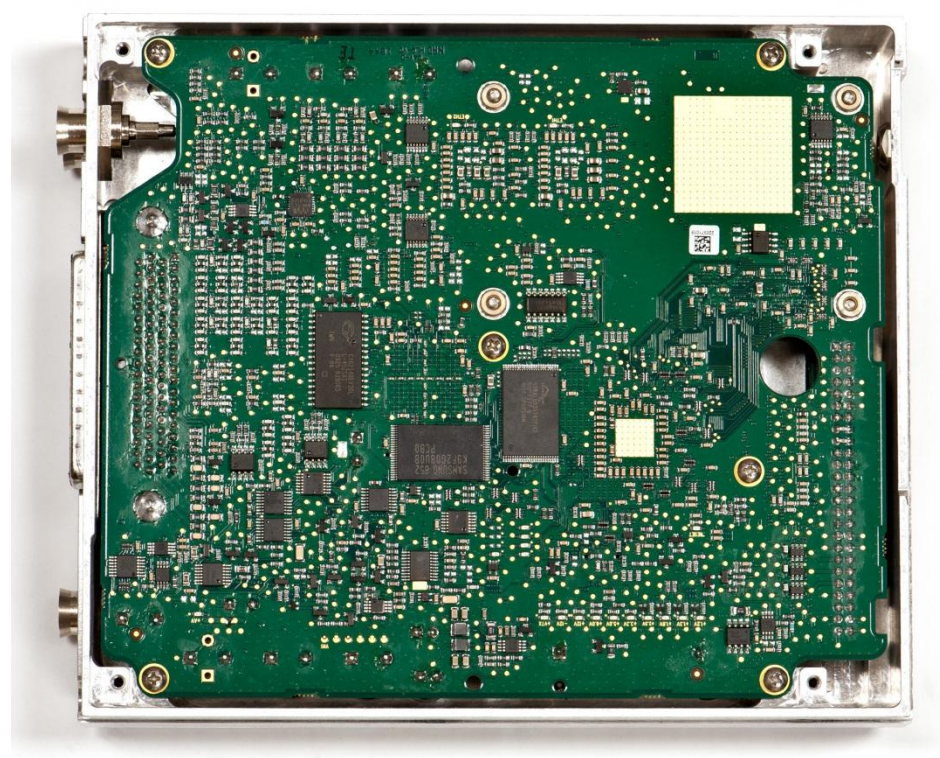
Garmin International, Inc.
 Model: GMN-00862 SN: 22W000027
 Test #: 111107
 Test to: CFR47 Parts 2 and 87
 File: Short Term Conf IntPho IPH01246

Market Label: GDL 88
 FCC ID: IPH-01246
 IC: 1312A-01246
 Date: May 2, 2012
 Page 3 of 4

RF Board in Chassis



Main Board in Chassis



Rogers Labs, Inc.
4405 West 259th Terrace
Louisburg, KS 66053
Phone/Fax: (913) 837-3214
Revision 1

Garmin International, Inc.
Model: GMN-00862 SN: 22W000027
Test #: 111107
Test to: CFR47 Parts 2 and 87
File: Short Term Conf IntPho IPH01246

Market Label: GDL 88
FCC ID: IPH-01246
IC: 1312A-01246
Date: May 2, 2012
Page 4 of 4