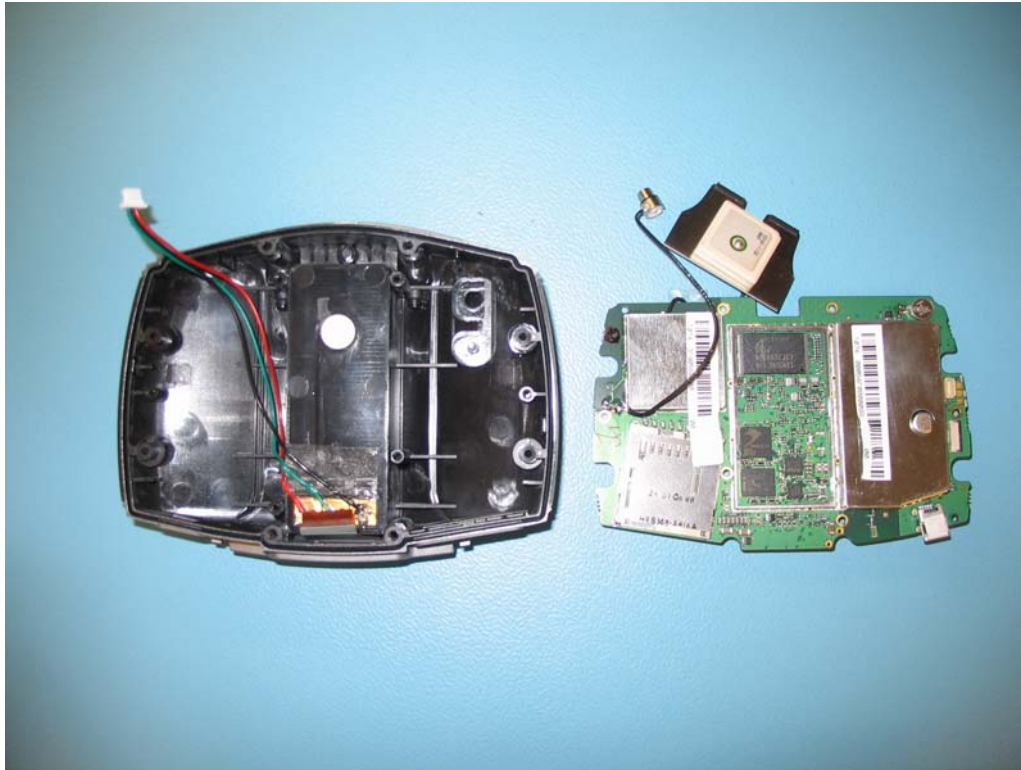


Photographs showing PCB locations inside case.



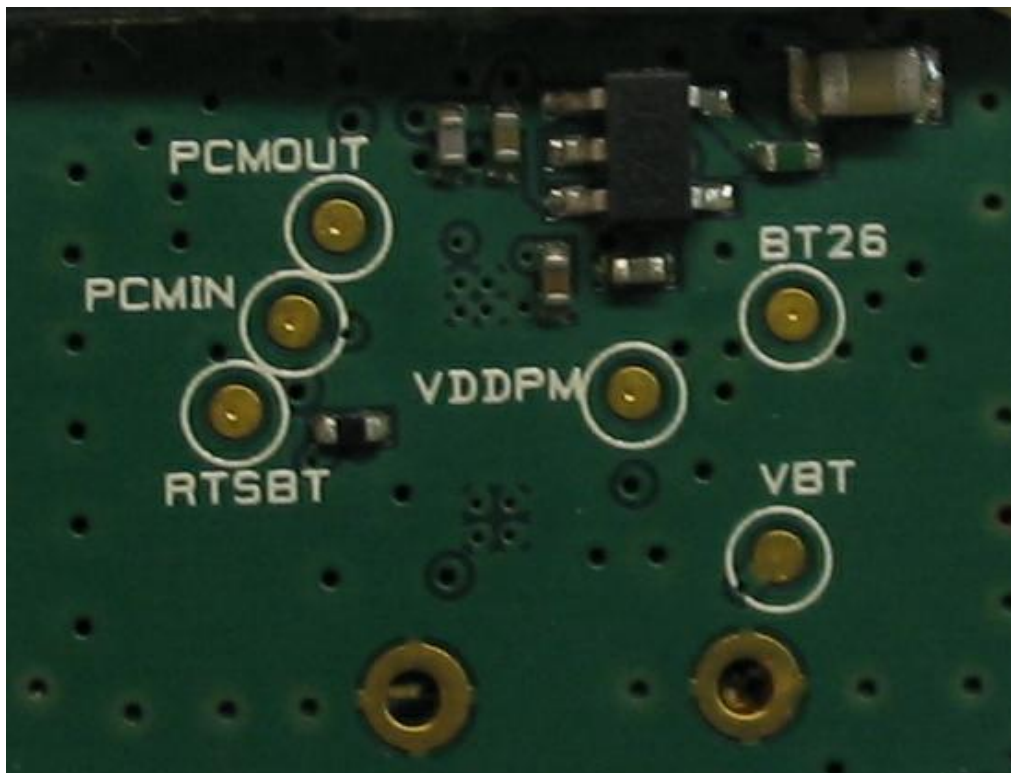
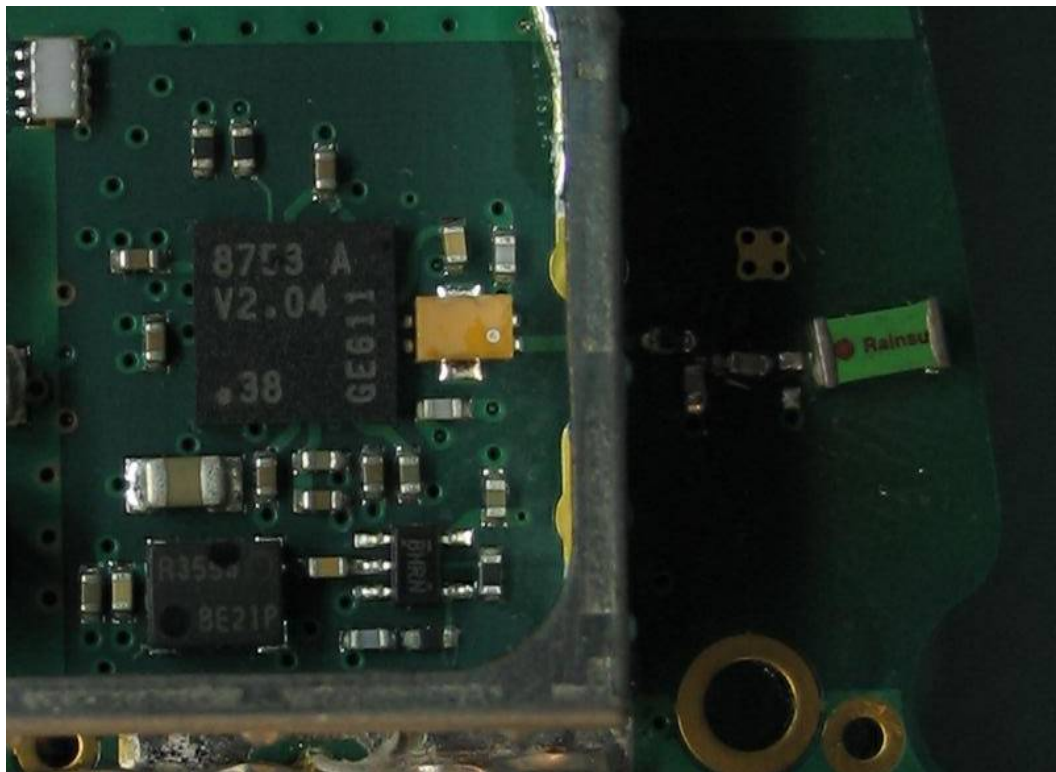
ROGERS LABS, INC.
4405 West 259th Terrace
Louisburg, KS 66053
Phone/Fax: (913) 837-3214

Garmin International, Inc.
MODEL: 011-01450-xx
Test #:060712 SN: 45
Test to: FCC Parts 2 and 15.249,

FCC ID#: IPH-01074
IC:1792A-01074

RSS-210 Page 1 of 4
IPH 01074 Tx Internal Photos.Doc 7/24/2006

Internal photographs of transmitter section of equipment under test.
Transmitter section without covers



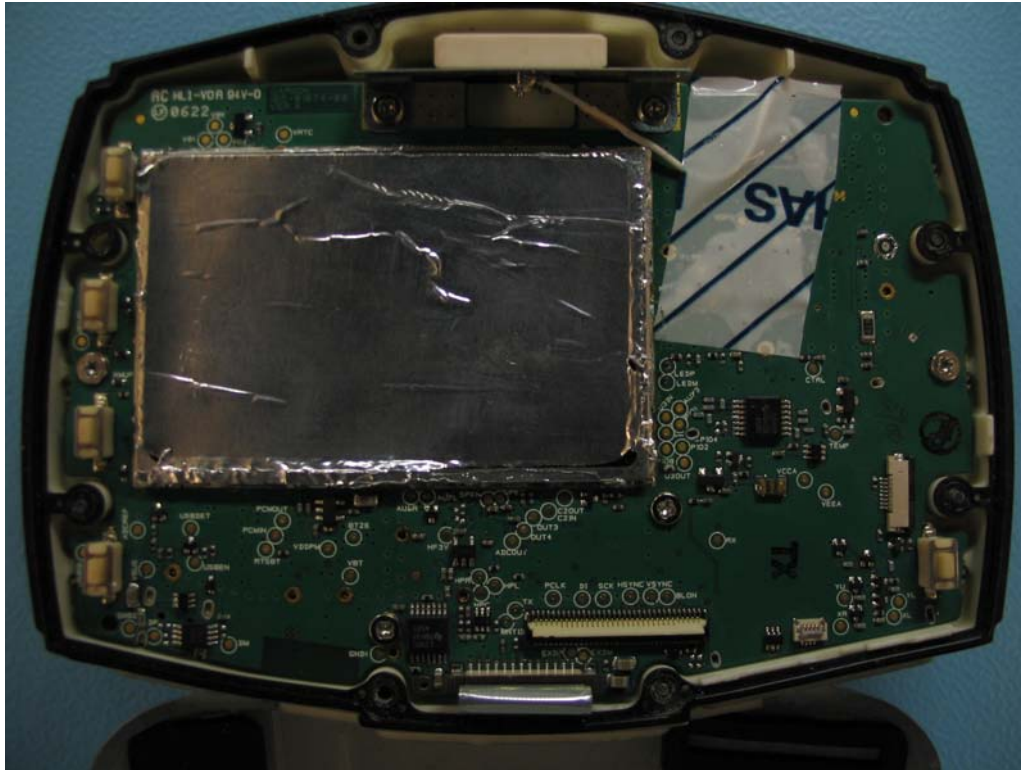
ROGERS LABS, INC.
4405 West 259th Terrace
Louisburg, KS 66053
Phone/Fax: (913) 837-3214

Garmin International, Inc.
MODEL: 011-01450-xx
Test #:060712 SN: 45
Test to: FCC Parts 2 and 15.249,

FCC ID#: IPH-01074
IC:1792A-01074

RSS-210 Page 2 of 4
IPH 01074 Tx Internal Photos.Doc 7/24/2006

Printed Circuit boards with covers in place.



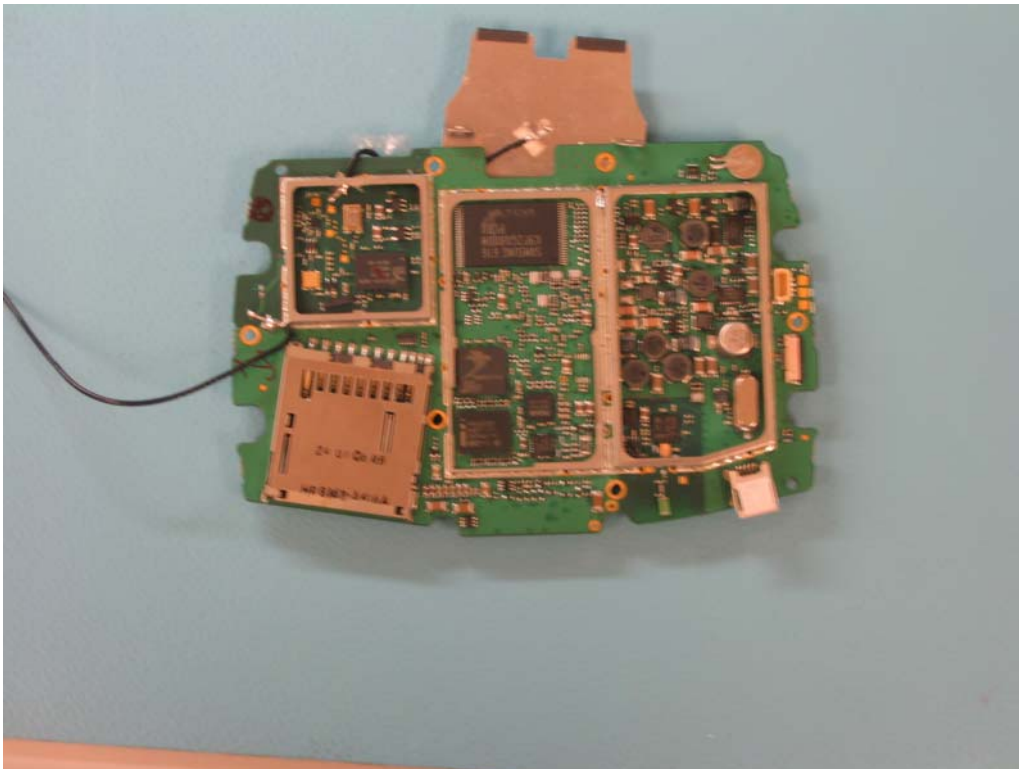
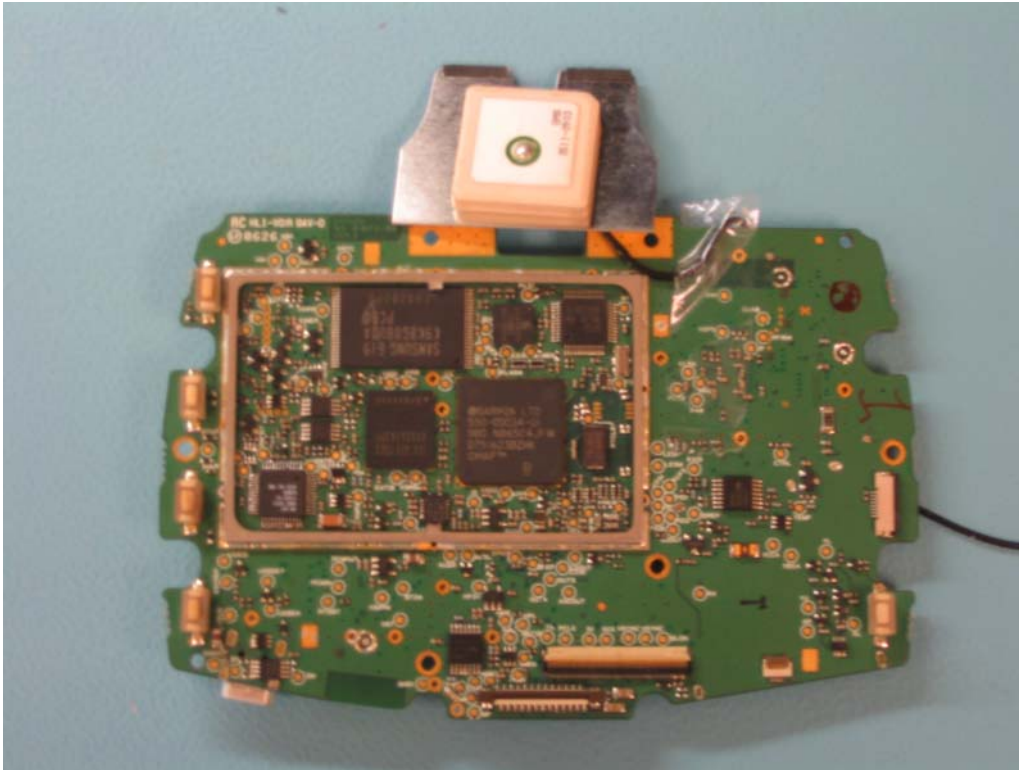
ROGERS LABS, INC.
4405 West 259th Terrace
Louisburg, KS 66053
Phone/Fax: (913) 837-3214

Garmin International, Inc.
MODEL: 011-01450-xx
Test #:060712 SN: 45
Test to: FCC Parts 2 and 15.249,

FCC ID#: IPH-01074
IC:1792A-01074

RSS-210 Page 3 of 4
IPH 01074 Tx Internal Photos.Doc 7/24/2006

Printed Circuit boards with covers removed



Lower Left Corner is SD card memory slot.