

TEST REPORT

Test Report No.: 8233FC

Applicant : KENWOOD CORPORATION
EUT : GPS NAVIGATION SYSTEM MONITOR DVD RECEIVER
Model No. : DNX9140
Serial No. : PPK00004 (Radiated Emission Test)
PPE00024 (Conducted RF Test via Antenna Terminal)
FCC ID : IOM39604
Issue Date : 16 January 2009
Date of Test : 25 December 2008 (Radiated Emission Test)
19 February 2008 (Conducted RF Test via Antenna Terminal)
Test Standard : FCC Part 15 Subpart C § 15.247 (10-1-07 Edition)
Procedure : ANSI C63.4: 2003 PUBLIC NOTICE DA 00-705
Test Results : PASS



NVLAP LAB CODE 200607-0

Approved By:


Manager / Jiro Ogiwara

Reviewed By:


Engineer / Kentaro Fukuda

Tested By:


Engineer / Tatsuro Sato

Table of Contents

Revised Record	4
1 Test Report	5
2 General Information	5
2.1 Applicant Information	5
2.2 Product Description	5
2.3 Summary of Test and Inspection Result	6
2.4 Test Methodology	7
2.5 Test Facility	7
3 System Test Configuration	8
3.1 Justification	8
3.2 Operating Modes	9
3.3 Test Instruments	14
3.4 Special Test Condition	14
3.5 Equipment Modifications	14
4 Antenna Requirement	15
5 AC Powerline Conducted Emission	16
6 20dB Bandwidth	17
6.1 Test Setup	17
6.2 Test Results	17
7 Carrier Frequency Separation	18
7.1 Test Setup	18
7.2 Test Results	18
8 Number of Hopping Frequency	19
8.1 Test Setup	19
8.2 Test Results	19
9 Dwell Time	20
9.1 Test Setup	20
9.2 Test Results	20
10 Maximum Peak Output Power	23
10.1 Test Setup	23
10.2 Test Results	23
11 Band Edge Compliance	24
11.1 Test Setup	24
11.2 Test Results	24
12 Spurious RF Conducted Emission	26
12.1 Test Setup	26
12.2 Test Results	26
13 Radiated Emission	30
13.1 Test Setup	30
13.2 Radiated Emission Calculation	30
13.3 Test Results	31

14 Photos of Tested EUT and Test Setup34
Appendix 1: AFH-Hopping Sequence.....35
Appendix 2: Certificate of Accreditation37
Appendix 3: Test Instruments.....38

Revised Record

Revised Record					
Number of Revised Time	Mark	Date	Person in Charge	Detail of Revision	Approved By
Initial	-	16 January 2009	Tatsuro Sato	-	Jiro Ogiwara

1 Test Report

- (1) This report summarizes the result of a single investigation and test result relate only to tested sample.
- (2) The report shall not be reproduced except in full without the written approval of the TAIYO YUDEN Co., Ltd.
- (3) This test report must not be used by the client to claim product endorsement by any government agency.
- (4) We hereby certify that no party to the applications authorized hereunder is subject to a denial of benefits, including FCC benefits, pursuant to Section 5301 of the Anti-Drug Abuse Act of 1988, 21 U.S.C 853(a).
- (5) The test results in this report are traceable to international standards.

2 General Information

2.1 Applicant Information

Company Name	KENWOOD CORPORATION
Address	2967-3, Ishikawa-cho Hachioji-shi, Tokyo 192-8525, Japan

2.2 Product Description

EUT	GPS NAVIGATION SYSTEM MONITOR DVD RECEIVER
Model No.	DNX9140
Serial No.	PPK00004 (Radiated Emission Test) PPE00024 (Conducted RF Test via Antenna Terminal)
FCC ID	IOM39604
Production Stage	Pre-Production
Type of Wide Band Modulation	FHSS Frequency Hopping (79ch) AFH: Adaptive Frequency Hopping (20ch)
Type of Modulation	GFSK
ITU Code	F1D
Power Supply	DC 12.0V
Operating Voltage Range	DC 10.5V Min DC 16V Max .
Operating Temperature Range	-10°C Min. 60°C Max.
Weight	2.5kg
Dimensions of EUT	W 188mm × L 163mm × H 117mm
Antenna Type	FILM TYPE ANTENNA
Max Antenna Gain	-0.404dBi
Operating Clocks	32.768kHz, 4.332MHz, 10.25MHz, 11.0592MHz, 12.000MHz, 13.000MHz, 16.897849MHz, 24.00MHz, 27.00MHz.
Receipt Date of Tested Sample	17 January 2008, 25 December 2008

EUT is Bluetooth module included for Car Visual System.

This is operated within the bands 2400 - 2483.5MHz frequency hopping intentional radiators.

It provides 79 channels. And it adopts an AFH function to prevent interference with other wireless applications. Refer to Appendix 1.

EUT operates in the unlicensed 2.4 GHz ISM (Industrial Scientific Medical) band. A frequency hop transceiver is applied to combat interference and fading.

2.3 Summary of Test and Inspection Result

No.	Item	Test Procedure	Specification	Remarks	Deviation	Worst Margin	Results
1	AC Powerline Conducted Emission	ANSI C63.4: 2003	FCC 15.207	Conducted Emission Test	-	-	N/A*1
2	Carrier Frequency Separation	Public Notice DA00-705	FCC 15.247 (a)(1)	Conducted RF Test via Antenna Terminal	N/A	-	Pass
3	Number of Hopping Frequency		FCC 15.247 (a)(1)(iii)		N/A	-	Pass
4	Dwell Time		FCC 15.247 (a)(1)(iii)		N/A	-	Pass
5	Maximum Peak Output Power		FCC 15.247 (b)(1)		N/A	-	Pass
6	Band Edge Compliance		FCC 15.247(d)		N/A	-	Pass
7	Spurious RF Conducted Emission		FCC 15.247(d)		N/A	-	Pass
8	Radiated Emission		FCC 15.247(d)	Radiated Emission Test	N/A	Peak: 21.1dB Average: 3.8dB Frequency: 4236.300MHz Transmitting Mode: 2441MHz Antenna Polarization: Vertical Type of Modulation: GFSK Modulation Car Navigation Mode FM Tuner: 98.1MHz	Pass

*1: This EUT is intended for use in vehicles. So this measurement is not applied to this EUT.

2.4 Test Methodology

Interference measurements were made in accordance with ANSI C63.4: 2003 Methods of Measurement of Radio-Noise Emissions from Low-Voltage Electrical and Electronic Equipment in the Range of 9 kHz to 40 GHz.

2.5 Test Facility

TAIYO YUDEN CO., LTD. EMC Center.
5607-2, Nakamuroda-machi, Takasaki-shi, Gunma, 370-3347, Japan.

1. FCC 47CFR, Part 15 Subpart C regulation test were performed on the shielded room, and radiated interference field strength test was performed on the 10 meter semi-anechoic chamber located at TAIYO YUDEN CO., LTD. EMC Center, 5607-2 Nakamuroda-machi, Takasaki-shi, Gunma, 370-3347 Japan.
2. This Laboratory is accredited under the National Voluntary Laboratory Accreditation Program (NVLAP) by United States Department of Commerce, National Institute of Standard and Technology (NIST) for satisfactory compliance with criteria established in Title 15, Part 285 Code of Federal Regulations.
3. These criteria encompass the requirements of ISO/IEC 17025:2005 and the relevant requirements of ISO 9002:1994 as suppliers of calibration or test results. Accreditation awarded for specific services, listed on the Scope of Accreditation for: Electromagnetic Compatibility and Telecommunications FCC. (NVLAP LAB CODE: 200607-0). Refer the certificate of the accreditation to Appendix 2.
4. This laboratory is listed by Federal Communications Commission, Equipment Authorization Division (Registration Number: 606514) and listed by Industry Canada (No.4389A-1).

3 System Test Configuration

3.1 Justification

1. Emission tests were performed with no deviation from the ANSI C63.4: 2003 and FCC 47CFR, Part 15 Section 15.247 regulation tests were performed with no deviation from the FCC Public Notice DA00-705 released March 30, 2000.
2. The system was configured for testing a typical fashion (as a customer would normally use it.).
3. Radiate testing in the range of 1 GHz to 25 GHz was investigated with the spectrum (peak detector function) under the FCC regulation section 15.209 (e) and 15.35 (b). For above 18GHz, test performed at an antenna to EUT distance of 1 meter. The level of any unwanted emissions from EUT did not exceed the level of the fundamental emission (Compliance with 15.209 (c)). And test result found to be compliance with FCC regulation section 15.209 (a) Radiated emission limits (500 micro-volts/meter). Data is presented for the “worst case” measurements, that E.U.T was normal operated.
4. Radiate testing in the range of 30 MHz to 1000 MHz was performed at an antenna to EUT distance of 3 meters under the 15.209 (e) and 15.31(f)(1).
5. Tests were performed with the representative channel operation as follows.
 - a. Lowest Frequency Channel: 0ch 2402MHz
 - b. Middle Frequency Channel: 39ch 2441MHz
 - c. Highest Frequency Channel: 78ch 2480MHz

3.2 Operating Modes

Transmitting Mode

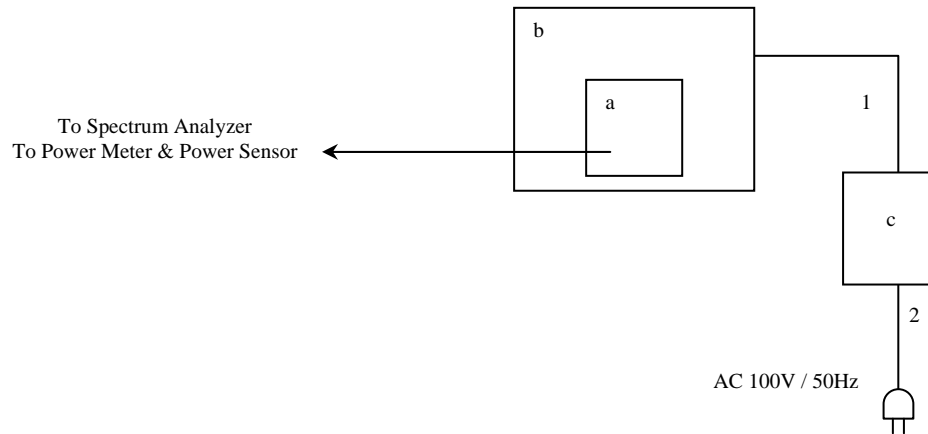
Type of Modulation		GFSK
Signal Pattern		PRBS9
Signal Packet Type	GFSK	DH1, DH3, DH5 for Dwell time test. DH5 for other test
Representative Channel		0ch 2402MHz (Lowest Frequency Channel)
		39ch 2441MHz (Middle Frequency Channel)
		78ch 2480MHz (Highest Frequency Channel)

Remarks:

Signal Pattern PRBS9:	<u>Periodic Pseudo Random Bit Sequence. $2^9 - 1$</u>
Signal Packet Type:	
DH1, 3, 5:	<u>Data high rate, ACL type packet</u>
	<u>Data payload with CRC, without FEC</u>
	<u>Fully transmission within one consecutive 625-microsecond transmission slots</u>
	<u>Number of slot = 1(DH1), 3(DH3), 5(DH5)</u>
	<u>Data size of payload = 27bytes (DH1), 183bytes (DH3), 339bytes (DH5)</u>
Software (Controller):	<u>The software used to set up the Bluetooth operating mode was installed</u>
	<u>EUT by KENWOOD CORPORATION</u>

(1)Conducted RF Test via Antenna Terminal

These numbers and the marks in the picture are corresponding to the numbers and the marks in tables shown.
Power Supply of EUT: DC12.0V from Regulated DC Power Supply “c”.

Test Setting for Normal Frequency Hopping and Non Frequency Hopping Mode**List of EUT and Accessories**

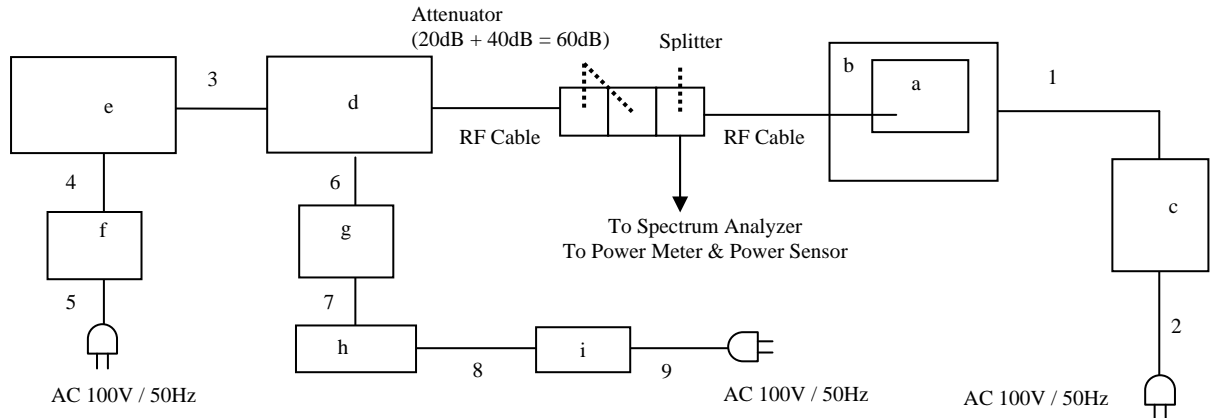
	Product Name	M/N	S/N	Manufacturer	EUT / Accessory	FCC ID / DoC
a	GPS NAVIGATION SYSTEM MONITOR DVD RECEIVER	DNX9140 (RF Module)	PPE00024	KENWOOD CORPORATION	EUT	IOM39604
b	Jig	DNX8220BT	PPE00024	KENWOOD CORPORATION	Accessory	-
c	Regulated DC Power Supply	PMC18-3A	FB000315	KIKUSUI	Accessory	-

Interface Cables

	Cable Type	M/N	Shielded	Ferrite Core	Material of Connector	Length	Treatment for the Extra Length
1	DC Cable	-	No	No	Plastic	2.20m	-
2	AC Cable	-	No	No	Plastic	2.45m	-

Test Setting for Adaptive Frequency Hopping Mode

Power Supply of EUT: DC12.0V from Regulated DC Power Supply “c”.

**List of EUT and Accessories**

	Product Name	M/N	S/N	Manufacturer	EUT / Accessory	FCC ID / DoC
a	GPS NAVIGATION SYSTEM MONITOR DVD RECEIVER	DNX9140 (RF Module)	PPE00024	KENWOOD CORPORATION	EUT	IOM39604
b	Jig	DNX8220BT	PPE00024	KENWOOD CORPORATION	Accessory	-
c	Regulated DC Power Supply	PMC18-3A	FB000315	KIKUSUI	Accessory	
d	Car Audio System	KCA-BT200	PPE00019	KENWOOD CORPORATION	Accessory	-
e	CD Receiver	KDC-W5641U	KE1447V1100106	KENWOOD CORPORATION	Accessory	-
f	Regulated DC Power Supply	PMC18-5A	LJ001201	KIKUSUI	Accessory	-
g	Evaluation Board	WB4-40	No.18	Parrot	Accessory	-
h	Personal Computer	N1010vP180x420DC120	TW30710675	Hewlett Packard	Accessory	DoC
i	AC/DC Adapter	ADP-75HB	MVT0305016771	Hewlett Packard	Accessory	-

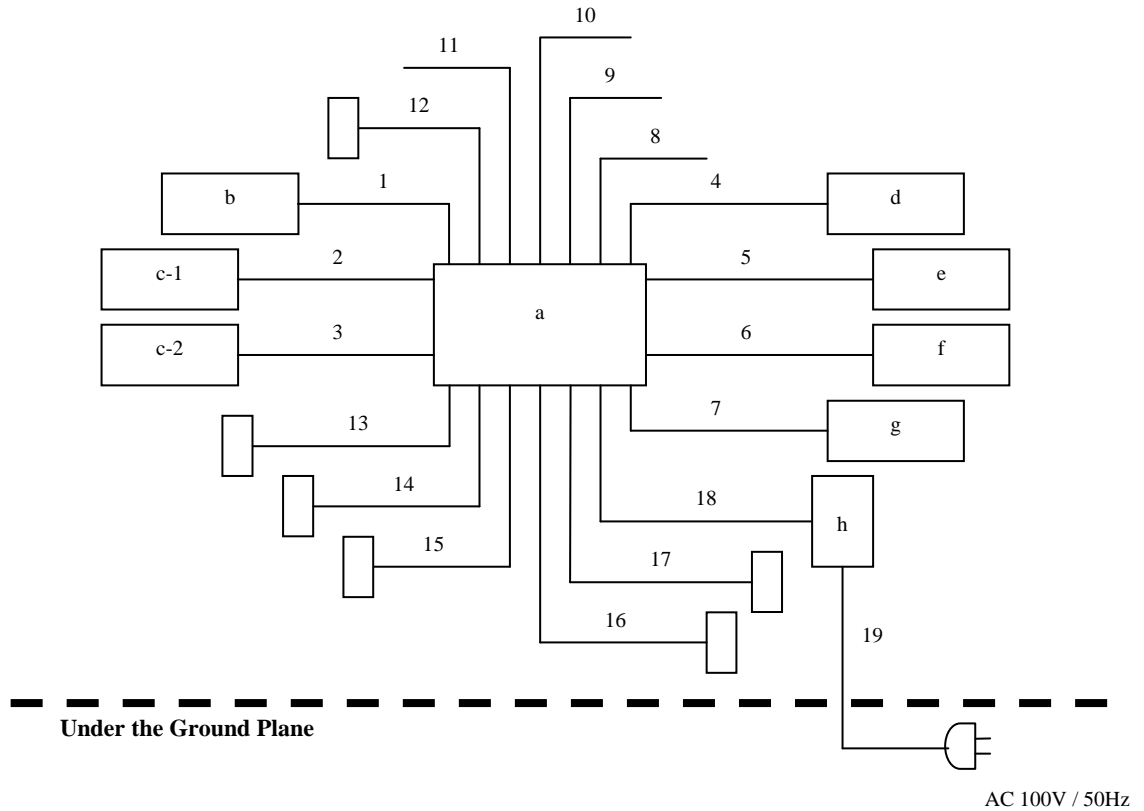
Interface Cables

No.	Cable Type	M/N	Shielded	Ferrite Core	Material of Connector	Length	Notes
1	DC Cable	-	No	No	Plastic	2.20m	-
2	AC Cable	-	No	No	Plastic	2.45m	-
3	Interface Cable (*1)	-	Yes	No	Metal	1.41m	-
4	DC Cable	-	No	No	Plastic	1.05m	-
5	AC Cable	-	No	No	Plastic	2.45m	-
6	Bus Cable	-	No	No	Plastic	0.44m	-
7	RS232C Cable	-	No	No	Metal	1.62m	-
8	DC Cable	-	No	No	Plastic	1.80m	-
9	AC Cable	-	No	No	Plastic	1.80m	-

(*1): This cable is able to provide “Signal-Interface” and “DC Power-Supply”.

(2) Radiated Emission Test

These numbers and the marks in the picture are corresponding to the numbers and the marks in tables shown.
Power Supply of EUT: DC12.0V from Regulated DC Power Supply “h”.



List of EUT and Accessories

	Product Name	M/N	S/N	Manufacturer	EUT / Accessory	FCC ID / DoC
a	GPS NAVIGATION SYSTEM MONITOR DVD RECEIVER	DNX9140	PPK00004	KENWOOD CORPORATION	EUT	IOM39604
b	Satellite Radio Interface Box	KCA-XM100V	80400001	KENWOOD CORPORATION	Accessory	-
c-1	Speaker	-	2	KENWOOD CORPORATION	Accessory	-
c-2						
d	GPS Antenna	W02-5305-05	4	KENWOOD CORPORATION	Accessory	-
e	Microphone	W01-1718-05	5	KENWOOD CORPORATION	Accessory	-
f	Cord with pinplug	E30-6889-05	2	KENWOOD CORPORATION	Accessory	-
g	FM Antenna	-	3	KENWOOD CORPORATION	Accessory	-
h	Regulated DC Power Supply	PMC18-5A	NE001553	KIKUSUI	Accessory	-

Interface Cables

	Cable Type	M/N	Shielded	Ferrite Core	Material of Connector	Length	Treatment for the Extra Length
1	Satellite Radio Interface Box Cable	-	Yes	No	Metal	1.45m	Fold back and forth in the center.
2	Speaker Cable	-	No	No	Plastic	0.96m	-
3	Speaker Cable	-	No	No	Plastic	0.96m	-
4	GPS Antenna Cable	-	Yes	No	Metal	5.00m	Fold back and forth in the center.
5	Microphone Cable	-	No	No	Plastic	3.00m	Fold back and forth in the center.
6	Cord with pinplug Cable	-	No	No	Plastic	3.00m	Fold back and forth in the center.
7	FM Antenna Cable	-	Yes	No	Metal	2.30m	Fold back and forth in the center.
8	TV Tuner Cable	-	Yes	No	Metal	3.00m	Fold back and forth in the center. Cable end is open.
9	USB Cable	-	Yes	No	Metal	1.00m	Fold back and forth in the center. Cable end is open.
10	USB Cable	-	Yes	No	Metal	1.00m	Fold back and forth in the center. Cable end is open.
11	Relay Cable	-	No	No	Plastic	1.00m	Fold back and forth in the center. Cable end is open.
12	AV Cable for iPod	-	No	No	Metal	1.00m	Fold back and forth in the center. Cable end is terminated (10k ohm).
13	AV Cable	-	Yes	No	Metal	1.40m	Fold back and forth in the center. Cable end is terminated (10k ohm).
14							
15							
16							
17							
18	DC Cable	-	No	No	Plastic	2.00m	-
19	AC Cable	-	No	No	Plastic	2.40m	-

3.3 Test Instruments

About test instruments for all tests, please refer to appendix 3.

3.4 Special Test Condition

Nothing.

3.5 Equipment Modifications

No modification has been carried out by TAIYO YUDEN CO., LTD. EMC Center.

4 Antenna Requirement

The EUT provides a permanently attached antenna and it was found to be compliant with FCC regulation section 15.203.

Antenna Type	FILM TYPE ANTENNA
Antenna Gain	-0.404dBi

5 AC Powerline Conducted Emission

N/A

This EUT is intended for use in vehicles. So this measurement is not applied to this EUT.

6 20dB Bandwidth

6.1 Test Setup

The spectrum analyzer was connected to the transmitter output port through the RF cable.

Spectrum Analyzer Setting:

Detector Mode	Peak
RBW	30kHz
VBW	30kHz
Span	2MHz
Sweep Time	Auto

6.2 Test Results

Serial No. : PPE00024
Power : DC 12.0V
Mode : Transmitting Mode, Non Frequency Hopping
Temperature : 22.9 °C
Humidity : 53.4 %

GFSK Modulation

Channel	Frequency [MHz]	20dB Bandwidth [MHz]
0ch (Lowest)	2402.0	0.877
39ch (Middle)	2441.0	0.863
78ch (Highest)	2480.0	0.870

7 Carrier Frequency Separation

7.1 Test Setup

The spectrum analyzer was connected to the transmitter output port through the RF cable.

Spectrum Analyzer Setting:

Detector Mode	Peak
RBW	100kHz
VBW	300kHz
Span	3MHz
Sweep Time	Auto

7.2 Test Results

Serial No. : PPE00024
 Power : DC 12.0V
 Mode : Transmitting Mode, Frequency Hopping
 Transmitting Mode, AFH
 Temperature : 22.9 °C
 Humidity : 53.4 %
 Regulation : FCC Part15 C §15.247 (a)(1)

GFSK Modulation

Frequency Hopping (79ch)

Channel	Channel Separation [MHz]	Limit *1 [MHz]
0ch-1ch (Lowest)	0.955	> 0.585
38ch-39ch (Middle)	1.015	> 0.576
77ch-78ch (Highest)	1.010	> 0.581

Adaptive Frequency Hopping (20ch)

Channel	Channel Separation [MHz]	Limit *1 [MHz]
0ch-1ch (Lowest)	1.000	> 0.585
38ch-39ch (Middle)	1.010	> 0.576
77ch-78ch (Highest)	1.015	> 0.581

*1: Limit value of Carrier Frequency Separation is 2/3 of 20dB Bandwidth.

Limit is two-thirds of the 20 dB bandwidth of the hopping channel provided the systems operate with an output power no greater than 125mW.

Refer the result of 20dB Bandwidth to Section 6.

8 Number of Hopping Frequency

8.1 Test Setup

The spectrum analyzer was connected to the transmitter output port through the RF cable.

Spectrum Analyzer Setting:

Detector Mode	Peak
RBW	300kHz
VBW	300kHz
Sweep Time	Auto

8.2 Test Results

Serial No. : PPE00024
 Power : DC 12.0V
 Mode : Transmitting Mode, Frequency Hopping
 Transmitting Mode, AFH
 Temperature : 22.9 ℃
 Humidity : 53.4 %
 Regulation : FCC Part15 C §15.247 (a)(1)(iii)

GFSK Modulation

Mode	Number of Channel [times]	Limit [time]
Frequency Hopping (79ch)	79	>=75
Adaptive Frequency Hopping (20ch)	20	>=15

9 Dwell Time

9.1 Test Setup

The spectrum analyzer was connected to the transmitter output port through the RF cable.

Spectrum Analyzer Setting:

Detector Mode	Peak
RBW	1MHz
VBW	1MHz
Span	0Hz
Sweep Time	Auto

9.2 Test Results

Serial No. : PPE00024
 Power : DC 12.0V
 Mode : Transmitting Mode (DH1, DH3, DH5), Frequency Hopping
 Transmitting Mode (DH1, DH3, DH5), AFH
 Temperature : 22.9 °C
 Humidity : 53.4 %
 Regulation : FCC Part15 C §15.247 (a)(1)(iii)

GFSK Modulation

Frequency Hopping (79ch)			Adaptive Frequency Hopping (20ch)		
Packet	Dwell Time [ms]	Limit [ms]	Packet	Dwell Time [ms]	Limit [ms]
DH1	147.20	<=400	DH1	147.20	<=400
DH3	274.72	<=400	DH3	274.72	<=400
DH5	316.48	<=400	DH5	316.48	<=400

Data of Dwell Time (Frequency Hopping (79ch))

Time of Occupancy (Dwell Time) for Packet Type DH1

The frequency-hopping rate of Bluetooth system is 1600hops per 1 second.
A DH1 packet needs 1 time slot for transmitting and 1 time slot for receiving.

In a DH1 packet, it hops 800 times for transmitting per 1 second.
The number of hopping channel is 79.
The number of times that appears in 1 channel per 1 second is as follows.
 $800/79=10.13$ [times]

The average time of occupancy on any channel shall not be greater than 0.4 seconds (400ms) within a period of 0.4 seconds multiplied by the number of hopping channels employed $0.4 \times 79 = 31.6$ seconds
The number of times that appears in 1 channel per 31.6 seconds is as follows.
 $10.13 \times 31.6 = 320.11$ [times]

Transmitting time is 0.460 ms.
Then, dwell time is $320.11 \times 0.460 \text{ ms} = 147.20 \text{ ms}$ per 31.6 seconds.

Time of Occupancy (Dwell Time) for Packet Type DH3

The frequency-hopping rate of Bluetooth system is 1600hops per 1 second.
A DH3 packet needs 3 times slot for transmitting and 1 time slot for receiving.

In a DH3 packet, it hops 400 times for transmitting per 1 second.
The number of hopping channel is 79.
The number of times that appears in 1 channel per 1 second is as follows.
 $400/79=5.06$ [times]

The average time of occupancy on any channel shall not be greater than 0.4 seconds (400ms) within a period of 0.4 seconds multiplied by the number of hopping channels employed $0.4 \times 79 = 31.6$ seconds
The number of times that appears in 1 channel per 31.6 seconds is as follows.
 $5.06 \times 31.6 = 159.90$ [times]

Transmitting time is 1.717ms.
Then, dwell time is $161.16 \times 1.717\text{ms} = 274.72\text{ms}$ per 31.6 seconds.

Time of Occupancy (Dwell Time) for Packet Type DH5

The frequency-hopping rate of Bluetooth system is 1600hops per 1 second.
A DH5 packet needs 5 times slot for transmitting and 1 time slot for receiving.

In a DH5 packet, it hops 266.67 times for transmitting per 1 second.
The number of hopping channel is 79.
The number of times that appears in 1 channel per 1 second is as follows.
 $266.67/79=3.37$ [times]

The average time of occupancy on any channel shall not be greater than 0.4 seconds (400ms) within a period of 0.4 seconds multiplied by the number of hopping channels employed $0.4 \times 79 = 31.6$ seconds
The number of times that appears in 1 channel per 31.6 seconds is as follows.
 $3.37 \times 31.6 = 106.49$ [times]

Transmitting time is 2.967 ms.
Then, dwell time is $106.49 \times 2.967\text{ms} = 316.48\text{ms}$ per 31.6 seconds.

Data of Dwell Time (Adaptive Frequency Hopping (20ch))

Time of Occupancy (Dwell Time) for Packet Type DH1

The frequency-hopping rate of Bluetooth system is 1600hops per 1 second.
A DH1 packet needs 1 time slot for transmitting and 1 time slot for receiving.

In a DH1 packet, it hops 800 times for transmitting per 1 second.
The number of hopping channel is 20.
The number of times that appears in 1 channel per 1 second is as follows.
 $800/20=40$ [times]

The average time of occupancy on any channel shall not be greater than 0.4 seconds (400ms) within a period of 0.4 seconds multiplied by the number of hopping channels employed $0.4 \times 20 = 8.0$ seconds
The number of times that appears in 1 channel per 8.0 seconds is as follows.
 $40 \times 8.0 = 320.00$ [times]

Transmitting time is 0.460 ms.
Then, dwell time is $320.00 \times 0.460\text{ms} = 147.20\text{ms}$ per 8.0 seconds.

Time of Occupancy (Dwell Time) for Packet Type DH3

The frequency-hopping rate of Bluetooth system is 1600hops per 1 second.
A DH3 packet needs 3 times slot for transmitting and 1 time slot for receiving.

In a DH3 packet, it hops 400 times for transmitting per 1 second.
The number of hopping channel is 20.
The number of times that appears in 1 channel per 1 second is as follows.
 $400/20=20$ [times]

The average time of occupancy on any channel shall not be greater than 0.4 seconds (400ms) within a period of 0.4 seconds multiplied by the number of hopping channels employed $0.4 \times 20 = 8.0$ seconds
The number of times that appears in 1 channel per 8.0 seconds is as follows.
 $20 \times 8.0 = 160.00$ [times]

Transmitting time is 1.717 ms.
Then, dwell time is $160.00 \times 1.717\text{ms} = 274.72\text{ms}$ per 8.0 seconds.

Time of Occupancy (Dwell Time) for Packet Type DH5

The frequency-hopping rate of Bluetooth system is 1600hops per 1 second.
A DH5 packet needs 5 times slot for transmitting and 1 time slot for receiving.

In a DH5 packet, it hops 266.67 times for transmitting per 1 second.
The number of hopping channel is 20.
The number of times that appears in 1 channel per 1 second is as follows.
 $266.67/20=13.34$ [times]

The average time of occupancy on any channel shall not be greater than 0.4 seconds (400ms) within a period of 0.4 seconds multiplied by the number of hopping channels employed $0.4 \times 20 = 8.0$ seconds
The number of times that appears in 1 channel per 8.0 seconds is as follows.
 $13.34 \times 8.0 = 106.72$ [times]

Transmitting time is 2.967 ms.
Then, dwell time is $106.72 \times 2.967\text{ms} = 316.48\text{ms}$ per 8.0 seconds.

10 Maximum Peak Output Power

10.1 Test Setup

The spectrum analyzer was connected to the transmitter output port through the RF cable.

Spectrum Analyzer Setting:

Detector Mode	Peak
RBW	1MHz
VBW	1MHz
Span	5MHz
Sweep Time	Auto

10.2 Test Results

Serial No. : PPE00024
 Power : DC 12.0V
 Mode : Transmitting Mode, Non Frequency Hopping
 Temperature : 22.9 °C
 Humidity : 53.4 %
 Regulation : FCC Part15 C §15.247 (b)(1)

GFSK Modulation

Channel	Frequency [MHz]	Reading [dBm]	Cable Loss1 [dB]	Cable Loss2 [dB]	Result		Limit	
					[dBm]	[mW]	[dBm]	[mW]
0ch (Lowest)	2402	-4.99	0.56	0.33	-4.10	0.389	<30.0	<1000
39ch (Middle)	2441	-5.56	0.60	0.33	-4.63	0.344	<30.0	<1000
78ch (Highest)	2480	-6.68	0.57	0.33	-5.78	0.264	<30.0	<1000

Result = Reading + Cable Loss1 + Cable Loss2

Note: Cable Loss1: RF Cable

Cable Loss2: Conversion cable used for connecting to SMA type

11 Band Edge Compliance

11.1 Test Setup

The spectrum analyzer was connected to the transmitter output port through the RF cable.

Spectrum Analyzer Setting:

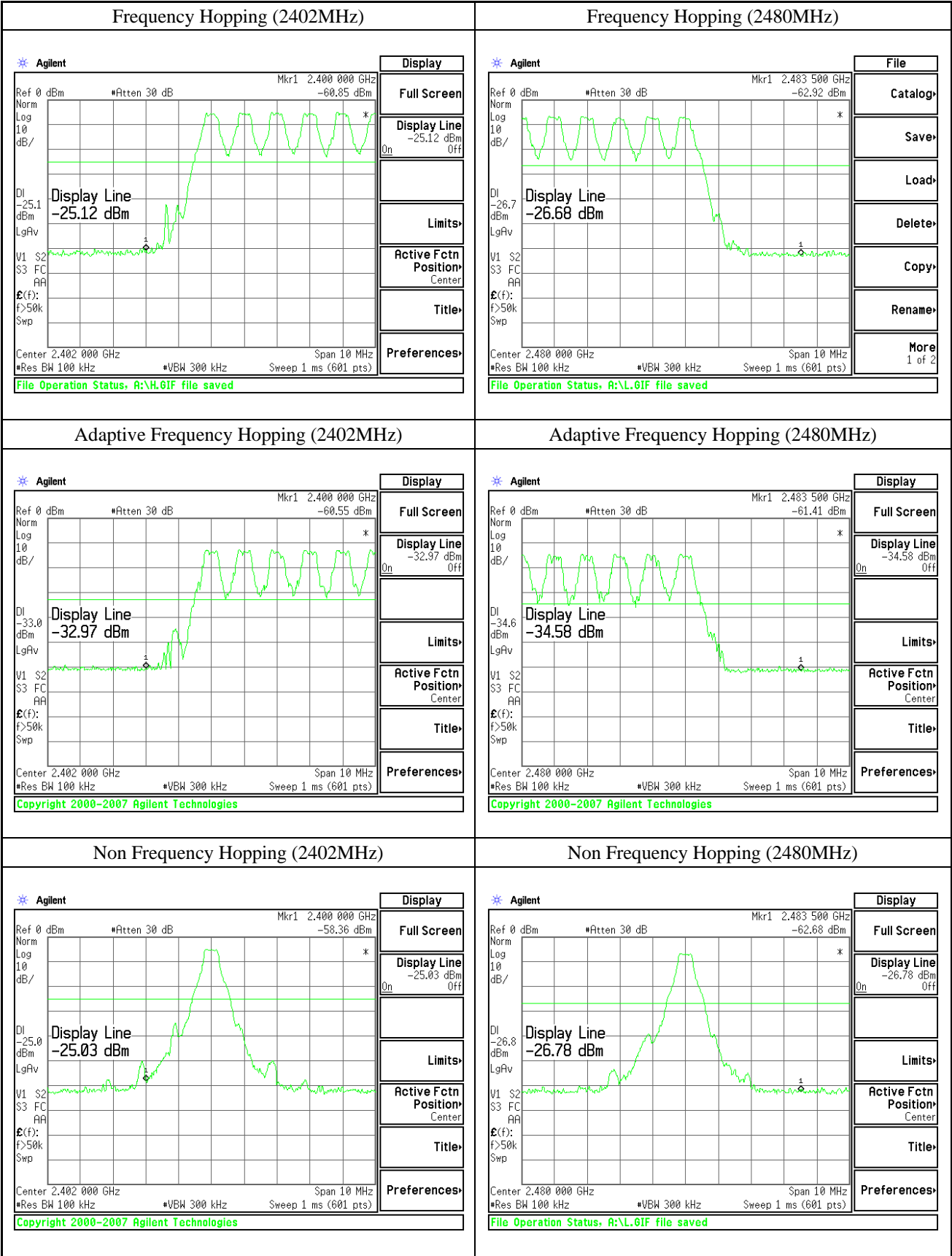
Detector Mode	Peak
RBW	100kHz
VBW	100kHz
Span	10MHz
Sweep Time	Auto

11.2 Test Results

Serial No.	:	PPE00024
Power	:	DC 12.0V
Mode	:	Transmitting Mode, Frequency Hopping Transmitting Mode, AFH Transmitting Mode, Non Frequency Hopping
Temperature	:	22.9 °C
Humidity	:	53.4 %
Regulation	:	FCC Part15 C §15.247 (d)

The spectrum data are attached next page. Display line indicates the 20dB offset below highest level.
It shows compliance with the requirement in part 15.247(d).

GFSK Modulation



12 Spurious RF Conducted Emission

12.1 Test Setup

The spectrum analyzer was connected to the transmitter output port through the RF cable.

Spectrum Analyzer Setting:

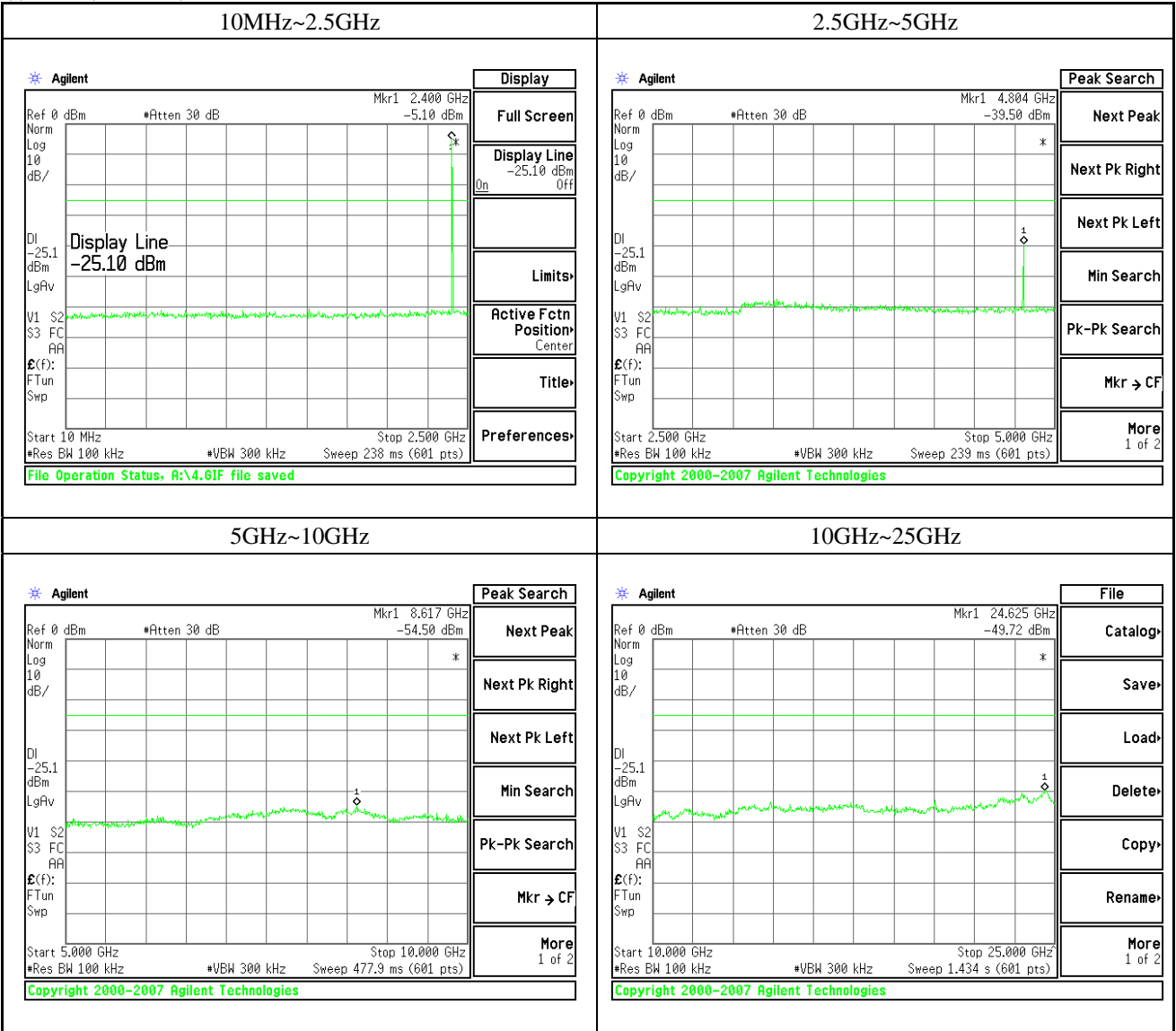
Detector Mode	Peak
RBW	100kHz
VBW	100kHz
Sweep Time	Auto

12.2 Test Results

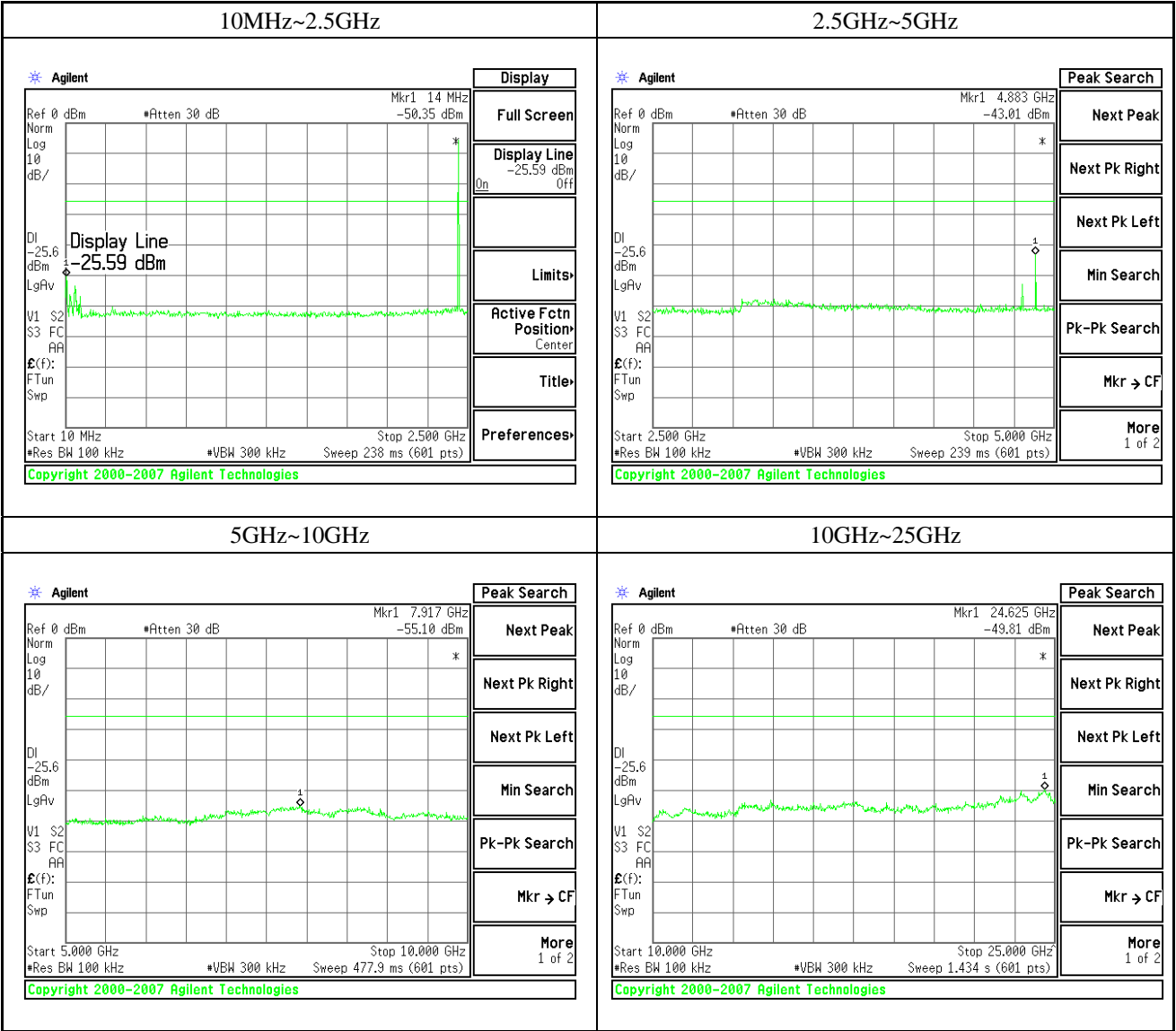
Serial No.	:	PPE00024
Power	:	DC 12.0V
Mode	:	Transmitting Mode, Non Frequency Hopping
Temperature	:	22.9 °C
Humidity	:	53.4 %
Regulation	:	FCC Part15 C §15.247 (d)

The spectrum data are attached next page. Display line indicates the 20dB offset below highest level. It shows compliance with the requirement in part 15.247(d).

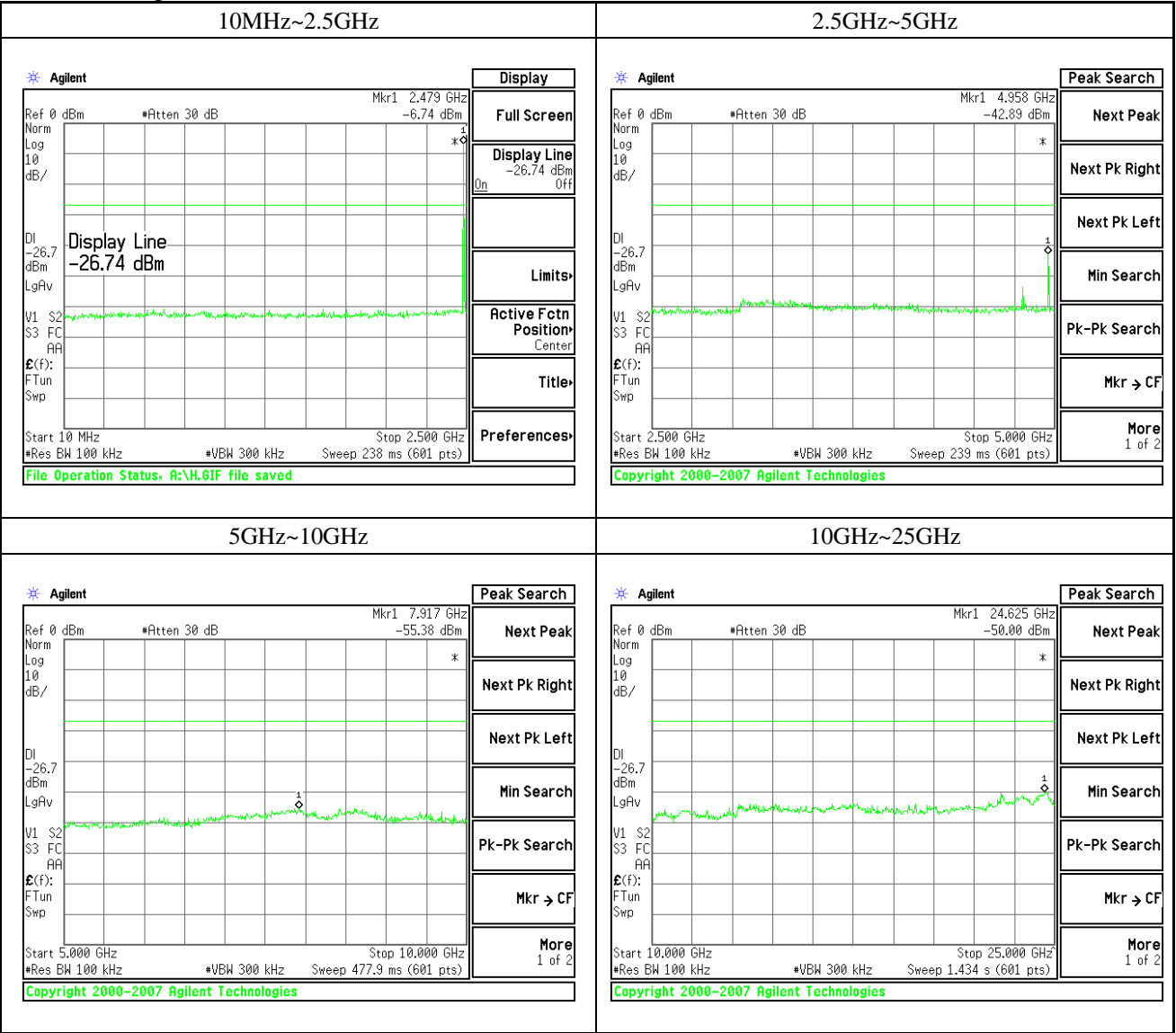
GFSK Modulation
(i) 0ch (Lowest) 2402MHz



(ii) 39ch (Middle) 2441MHz



(iii) 78ch (Highest) 2480MHz



13 Radiated Emission

13.1 Test Setup

The test setup was made according to ANSI STD C63.4: 2003 clause 8 on the 10-meter semi-anechoic chamber, which allows a 3 or 1 m distance measurement.

EUT was placed on non-conductive table (foam polystyrene).

The height of this table was 0.8 m.

The measurement has been conducted with both horizontal and vertical antenna polarization.

For above 1GHz, the receiving antenna is fixed in the height that EUT is in the illumination area of the 3dB beamwidth of the antenna.

The turntable has been fully rotated. The highest radiation of the equipment has been recorded.

For further description of the configuration refer to separate document named "Test Setup Photos (8233FC)".

Distance between equipment and antenna : 3m (30MHz to 18GHz)
1m (18GHz to 25GHz)

Test Receiver Setting:

30~1000MHz:

Detector Mode	Quasi-Peak
Bandwidth	120kHz

Spectrum Analyzer Setting:

1~25GHz:

Detector Mode	Peak and Average
Bandwidth	Peak: RBW: 1MHz, VBW: 1MHz
	Average: RBW: 1MHz, VBW: 10Hz

13.2 Radiated Emission Calculation

The field strength is calculated by adding the Antenna Factor and Cable Loss, and subtracting the Amplifier Gain (if any) from the measured reading.

The basic equation with a sample calculation is as follows:

$$c.f. = AF + CF + AL - AG - DF$$

$$RE = RA + c.f.$$

Where

c.f.	:	Correction Factor [dB(1/m)]
RE	:	Radiated Emission (Emission Level - Result) [dB(uV/m)]
RA	:	Receiver Amplitude (Reading Level) [dBuV]
AF	:	Antenna Factor [dB(1/m)]
CF	:	Cable Attenuation Loss [dB]
AG	:	Amplifier Gain [dB]
AL	:	Attenuator Loss [dB]
DF	:	Distance Factor
		Distance between equipment and antenna: 3m = 0 [dB]
		Distance between equipment and antenna: 1m = 9.5 [dB]

Assume a receiver reading of 36.5 dBuV is obtained.

The Correction Factor of -2.0 dB/m is added, giving a Radiated Emission of 34.5 dBuV/m.

The 34.5 dBuV/m value was mathematically converted to its corresponding level in uV/m.

$$RE = 36.5 + (-2.0) = 34.5 \text{ dBuV/m}$$

$$\text{Level in uV/m} = \text{Common Antilogarithm: } 10^{(34.5/20)} = 53.1 \text{ uV/m}$$

13.3 Test Results

Product	: GPS NAVIGATION SYSTEM MONITOR DVD RECEIVER	Model	: DNX9140
Serial No.	: PPK00004	Test Standard	: FCC Part15 Subpart C §15.247(d)
Power Supply	: DC 12.0V	Temp. / Humid.	: 22.6°C / 34.1%
Operator	: Tatsuro Sato		
Remark	Bluetooth: Transmitting Mode		
	Car Navigation Mode		
	FM Tuner: 98.1MHz		

Radiated Emission: Lch (2402MHz)

Below 1GHz

Frequency [MHz]	Pol. [H / V]	Reading [dB(uV)] QP / AV / PK		Factor [dB/m]	Level [dB(uV/m)] QP / AV / PK		Limit [dB(uV/m)]	Margin [dB] QP / AV / PK		Remark
468.017	H	42.6		-3.7	38.9		46.0	7.1		*
662.444	V	33.8		5.1	38.9		46.0	7.1		*
828.049	H	35.1		4.2	39.3		46.0	6.7		*

Above 1GHz

Frequency [MHz]	Pol. [H / V]	Reading [dB(uV)] QP / AV / PK		Factor [dB/m]	Level [dB(uV/m)] QP / AV / PK		Limit [dB(uV/m)]	Margin [dB] QP / AV / PK		Remark
1159.101	V		62.1	-11.5		50.6	74.0		23.4	
1159.101	V		60.2	-11.5		48.7	54.0		5.3	
4236.333	V		51.7	0.4		52.1	74.0		21.9	
4236.333	V		48.4	0.4		48.8	54.0		5.2	
4804.000	H		51.7	1.3		53.0	74.0		21.0	
4804.000	H		43.6	1.3		44.9	54.0		9.1	
4804.000	V		49.3	1.3		50.6	74.0		23.4	
4804.000	V		40.9	1.3		42.2	54.0		11.8	
7206.000	H		44.7	4.0		48.7	74.0		25.3	* Floor Noise
7206.000	H		31.3	4.0		35.3	54.0		18.7	* Floor Noise
9608.000	H		43.4	7.0		50.4	74.0		23.6	* Floor Noise
9608.000	H		31.3	7.0		38.3	54.0		15.7	* Floor Noise

Note: * = Out of Restricted Band.

This frequency is out of the restricted bands, so radiated emission limits specified in Section 15.209 does not apply.

15.247(d):

Radiated emissions which fall in the restricted bands, as defined in Section 15.205(a), must also comply with the radiated emission limits specified in Section 15.209(a) (see Section 15.205(c)).

Radiated Emission: Mch (2441MHz)

Below 1GHz

Frequency [MHz]	Pol. [H / V]	Reading [dB(uV)] QP / AV / PK			Factor [dB/m]	Level [dB(uV/m)] QP / AV / PK			Limit [dB(uV/m)]	Margin [dB] QP / AV / PK			Remark
468.013	H	42.7			-3.7	39.0			46.0	7.0			*
662.457	V	39.0			0.8	39.8			46.0	6.2			*
828.048	H	35.1			4.2	39.3			46.0	6.7			*

Above 1GHz

Frequency [MHz]	Pol. [H / V]	Reading [dB(uV)] QP / AV / PK			Factor [dB/m]	Level [dB(uV/m)] QP / AV / PK			Limit [dB(uV/m)]	Margin [dB] QP / AV / PK			Remark
1159.159	V			62.0	-11.5			50.5	74.0			23.5	
1159.159	V		60.1		-11.5		48.6		54.0		5.4		
4236.300	V			52.5	0.4			52.9	74.0			21.1	
4236.300	V		49.8		0.4		50.2		54.0		3.8		
4882.000	H			47.1	1.6			48.7	74.0			26.5	
4882.000	H		38.9		1.6		40.5		54.0		13.5		
4882.000	V			45.4	1.6			47.0	74.0			27.0	
4882.000	V		35.0		1.6		36.6		54.0		17.4		
7323.000	H			44.2	4.3			48.5	74.0			25.5	Floor Noise
7323.000	H		31.5		4.3		35.8		54.0		18.2		Floor Noise
9764.000	H			44.7	7.3			52.0	74.0			22.0	* Floor Noise
9764.000	H		30.8		7.3		38.1		54.0		15.9		* Floor Noise

Note: * = Out of Restricted Band.

This frequency is out of the restricted bands, so radiated emission limits specified in Section 15.209 does not apply.

15.247(d):

Radiated emissions which fall in the restricted bands, as defined in Section 15.205(a), must also comply with the radiated emission limits specified in Section 15.209(a) (see Section 15.205(c)).

Radiated Emission: Hch (2480MHz)

Below 1GHz

Frequency [MHz]	Pol. [H / V]	Reading [dB(uV)] QP / AV / PK			Factor [dB/m]	Level [dB(uV/m)] QP / AV / PK			Limit [dB(uV/m)]	Margin [dB] QP / AV / PK			Remark
468.013	H	42.8			-3.7	39.1			46.0	6.9			*
662.440	H	36.3			0.8	37.1			46.0	8.9			*
662.440	V	33.8			5.1	38.9			46.0	7.1			*

Above 1GHz

Frequency [MHz]	Pol. [H / V]	Reading [dB(uV)] QP / AV / PK			Factor [dB/m]	Level [dB(uV/m)] QP / AV / PK			Limit [dB(uV/m)]	Margin [dB] QP / AV / PK			Remark
1159.150	V			62.0	-11.5			50.5	74.0			23.5	
1159.150	V			60.2	-11.5			48.7	54.0			5.3	
4236.250	V			52.1	0.4			52.5	74.0			21.5	
4236.250	V			49.3	0.4			49.7	54.0			4.3	
4960.000	H			47.4	1.8			49.2	74.0			24.8	
4960.000	H			39.0	1.8			40.8	54.0			13.2	
4960.000	V			44.7	1.8			46.5	74.0			27.5	
4960.000	V			32.8	1.8			34.6	54.0			19.4	
7440.000	H			44.7	4.6			49.3	74.0			24.7	Floor Noise
7440.000	H			32.4	4.6			37.0	54.0			17.0	Floor Noise
9920.000	H			43.6	7.5			51.1	74.0			22.9	* Floor Noise
9920.000	H			31.5	7.5			39.0	54.0			15.0	* Floor Noise

Note: * = Out of Restricted Band.

This frequency is out of the restricted bands, so radiated emission limits specified in Section 15.209 does not apply.

15.247(d):

Radiated emissions which fall in the restricted bands, as defined in Section 15.205(a), must also comply with the radiated emission limits specified in Section 15.209(a) (see Section 15.205(c)).

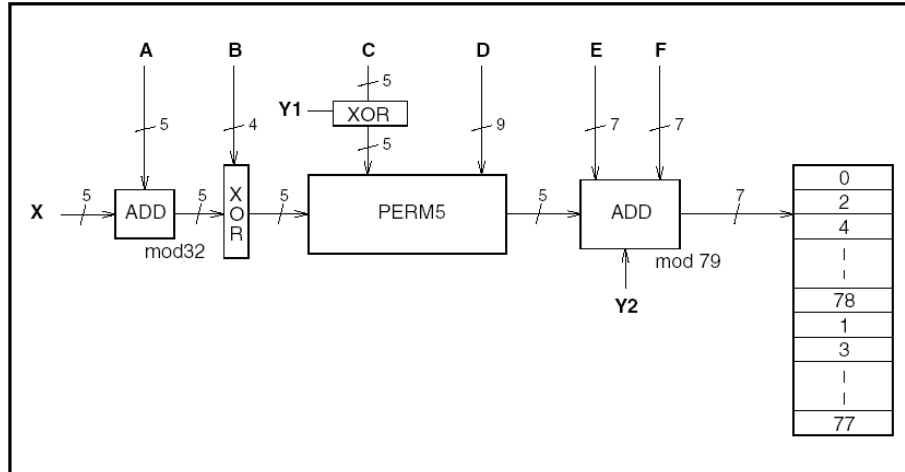
14 Photos of Tested EUT and Test Setup

Setup photo with EUT has been submitted as separate document named “Test Setup Photos (8233FC)”.

Appendix 1: AFH-Hopping Sequence

AFH-Hopping Sequence is provided for in the Bluetooth Spec 1.2. Here is an outline below.

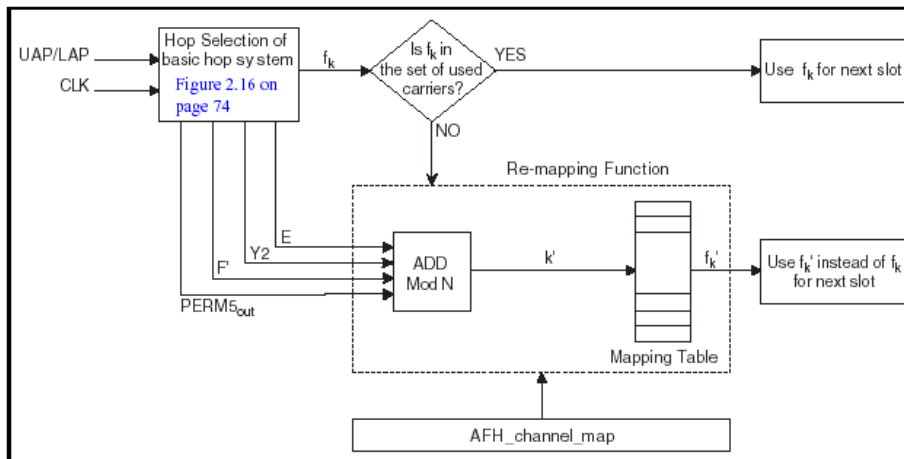
1. In the case of 79Hopping



Due to the above flow, 32 hops are made into 5 ways. Then, the sign of the sign head 160 is formed. The remainder that is worked out by dividing with 79 is assigned to Hopping Channel.

Each parameter of the above figure uses the value calculated from the Bluetooth clock and the Bluetooth address, which are shown in the next page.

2. In the case of AFH-Hopping



Also in the case of AFH, the fundamental sign adopt the sign head 160 that is the same as the case of 79Hopping. Hopping Pattern uses the value that is worked out by dividing with the number of AFH-Channel's. Then, available Hopping becomes even as well as 79Hopping.


The selection of the communication Channel is done by the communication error rate and the receiving signal strength. Frequency is determined by pairing the channel and the value, which is divided by the number of AFH-Channel one-to-one.

It is decided in the specifications that Communication Channel has to have "20Channels" at least. However, if the number of communication Channel is controlled to be under 20 back to 79Channel-Hopping, and select the communication Channel again.

3. The parameter list which decides Hopping-Pattern

	Page scan / Interlaced Page Scan / Inquiry scan / Interlaced Inquiry Scan	Page/Inquiry	Master/Slave page response and Inquiry response	Connection state
X	$CLKN_{16-12} /$ $(CLKN_{16-12} + 16) \bmod 32 /$ $Xir_{4-0} /$ $Xir_{4-0} + 16 \bmod 32$	Xp_{4-0} / Xi_{4-0}	$Xprm_{4-0} /$ $Xprs_{4-0} /$ Xir_{4-0}	CLK_{6-2}
Y1	0	$CLKE_1 / CLKN_1$	$CLKE_1 / CLKN_1 / 1$	CLK_1
Y2	0	$32 \times CLKE_1 /$ $32 \times CLKN_1$	$32 \times CLKE_1 /$ $32 \times CLKN_1 /$ 32×1	$32 \times CLK_1$
A	A_{27-23}	A_{27-23}	A_{27-23}	$A_{27-23} \oplus CLK_{25-21}$
B	A_{22-19}	A_{22-19}	A_{22-19}	A_{22-19}
C	$A_{8,6,4,2,0}$	$A_{8,6,4,2,0}$	$A_{8,6,4,2,0}$	$A_{8,6,4,2,0} \oplus CLK_{20-16}$
D	A_{18-10}	A_{18-10}	A_{18-10}	$A_{18-10} \oplus CLK_{15-7}$
E	$A_{13,11,9,7,5,3,1}$	$A_{13,11,9,7,5,3,1}$	$A_{13,11,9,7,5,3,1}$	$A_{13,11,9,7,5,3,1}$
F	0	0	0	$16 \times CLK_{27-7} \bmod 79$
F'	n/a	n/a	n/a	$16 \times CLK_{27-7} \bmod N$

Appendix 2: Certificate of Accreditation

United States Department of Commerce National Institute of Standards and Technology		
		
<hr/> Certificate of Accreditation to ISO/IEC 17025:2005 <hr/>		
NVLAP LAB CODE: 200607-0		
Taiyo Yuden Co., Ltd. EMC Center		
Takasaki-shi Gunma 370-3347		
JAPAN		
<i>is accredited by the National Voluntary Laboratory Accreditation Program for specific services, listed on the Scope of Accreditation, for:</i>		
ELECTROMAGNETIC COMPATIBILITY AND TELECOMMUNICATIONS		
<i>This laboratory is accredited in accordance with the recognized International Standard ISO/IEC 17025:2005. This accreditation demonstrates technical competence for a defined scope and the operation of a laboratory quality management system (refer to joint ISO-ILAC-IAF Communique dated 18 June 2005).</i>		
2008-10-01 through 2009-09-30 <i>Effective dates</i>		 For the National Institute of Standards and Technology

Appendix 3: Test Instruments

1. Conducted RF Test via Antenna Terminal

Instrument	Manufacturer	Model No.	Serial No.	Calibration Date (Interval (year))	
Spectrum Analyzer	Rohde & Schwarz	FSIQ26	840061/0004	14 February 2007 (1)	○
	Agilent Technologies	E4446A	US42070181	17 October 2007 (1)	●
Power Meter	Rohde & Schwarz	NRVD	838380/0043	5 February 2007 (1)	○
	Agilent Technologies	N1911A	MY45100612	8 June 2007 (1)	○
		E4416A	MY45100855	4 September 2007 (1)	●
Power Sensor	Rohde & Schwarz	NRV-Z1	838357/0001	5 February 2007 (1)	○
	Agilent Technologies	N1922A	MY45240439	8 June 2007 (1)	○
		8482A	MY41094396	4 September 2007 (1)	●
RF Cable	SUHNER	SUCOFLEX 104	RF2-2	3 July 2007 (1)	●
		SUCOFLEX 104E	RF3-3	4 April 2007 (1)	●
		SUCOFLEX 103	SU5	1 August 2007 (1)	●
	HP	85381C	No.3		●
Power Divider	Aeroflex / Inmet	6005-03	RF-8	3 July 2007 (1)	●
Attenuator	Anritsu	MP721D	M04067	1 August 2007 (1)	●
		MP721F	M40372		●
Multi Meter	Advantest	R6451A	67840312	19 September 2007 (1)	●
	Agilent Technologies	34401A	MY41038383	5 June 2007 (1)	○
Temperature Chamber	TABAI ESPEC	PU-2KTH	14006759	6 February 2007 (1)	○
Hygro thermograph	SEKONIC	ST-200	HD01-000797	6 September 2007 (1)	●

Note:

●: Applied by measurement.

○: Not applied by measurement.

2. Radiated Emission Test

Instrument	Manufacturer	Model No.	Serial No.	Calibration Date (Interval (year))	
10m Anechoic Chamber	TDK Co., Ltd.	DA-06912	-	12 February 2008 (1)	●
EMI Test Receiver	Rohde & Schwarz	ESCS 30	100148	18 July 2008 (1)	●
Spectrum Analyzer	Agilent Technologies	E4407B	MY44221019	28 April 2008 (1)	●
		E4446A	US42070181	21 October 2008 (1)	●
Amplifier	Agilent Technologies	83017A	3950M00169	31 July 2008 (1)	●
		8447D	2944A06812	11 September 2008 (1)	●
RF Selector	TDK Co., Ltd	NS4900	0302-010		●
Tunable Filter	TOYO Corporation	NF-49BT	No.1	31 July 2008 (1)	○
RF Filter	Microtronics	BRM50702-01	020		○
RF Cable	SUHNER	RG214	RG1	11 September 2008 (1)	●
		RG214	RG3		●
		RG214	RG5		●
		RG214	RG7		●
		RG214	RG8		●
	HP	HP8120-4782	163 9232	11 September 2008 (1)	●
	SUHNER	SUCOFLEX 106	SU1	31 July 2008 (1)	●
		SUCOFLEX 103	SU5		●
		SUCOFLEX 103	SU6		○
	HP	85381C	No.3		●
Attenuator	KYORITSU	KPD-602	220142	11 September 2008 (1)	●
Antenna	Schwarzbeck	BBA9106	No.3	18 December 2008 (1)	○
		UHALP9108-A	0160		○
		VULB9160	3179		●
		VHA9103	No.3(+D3-1,2)		○
		UHA9105	No.3		●
	EMCO	3115	9403-4232	13 February 2008 (2)	●
		3116	9311-2227		●
Multi Meter	Agilent Technologies	34401A	MY41038383	25 June 2008 (1)	●
Hygro Thermograph	SEKONIC	ST-50	HE01-00511	14 February 2008 (1)	●
Software	TOYO Corporation	EP5/RE Ver.3.7.0	0208086	-	●

Note:

●: Applied by measurement.

○: Not applied by measurement.