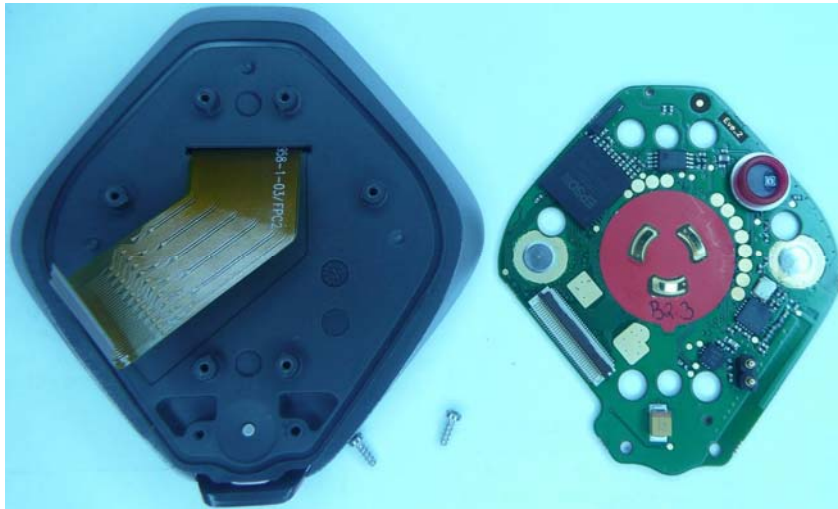


Polar Electro Oy 03.12.2009

Internal photos of FCC ID: INWT6, IC: 6248A-T6

Receiver module disassembled.



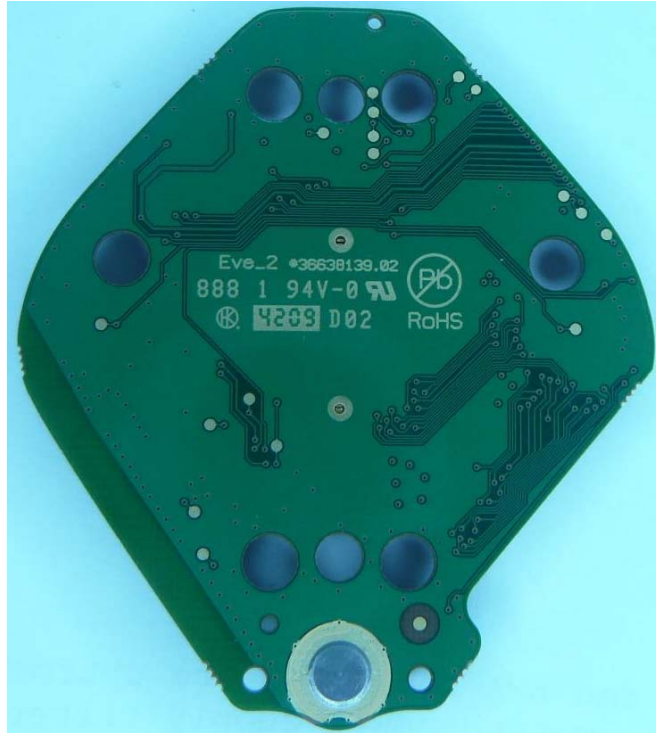
Display and PWBA.



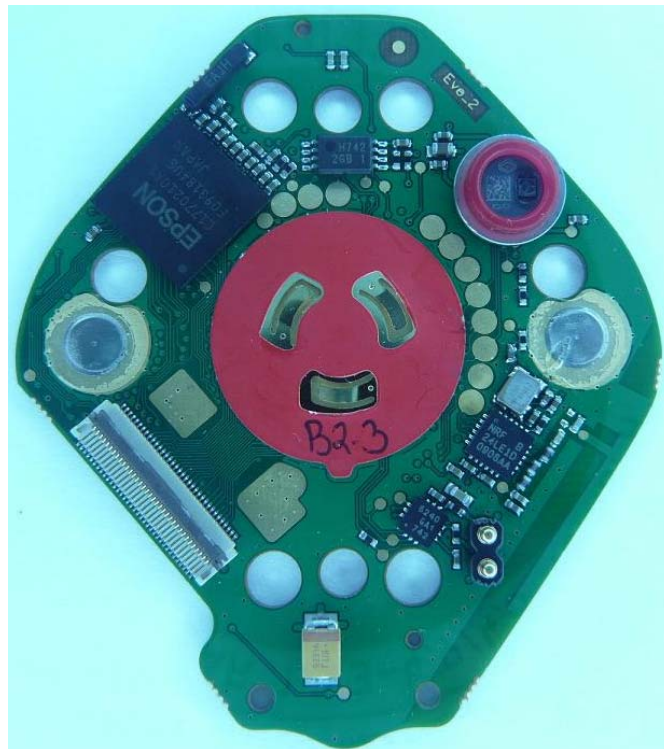
All parts (except bike mounting parts).

Polar Electro Oy      03.12.2009

Internal photos of FCC ID: INWT6, IC: 6248A-T6



PWBA, TOP view.



PWBA, BOTTOM view.