

Polar Electro Oy 22.10.2008

Internal photos of FCC ID: INWN8, IC: 6248A-N8

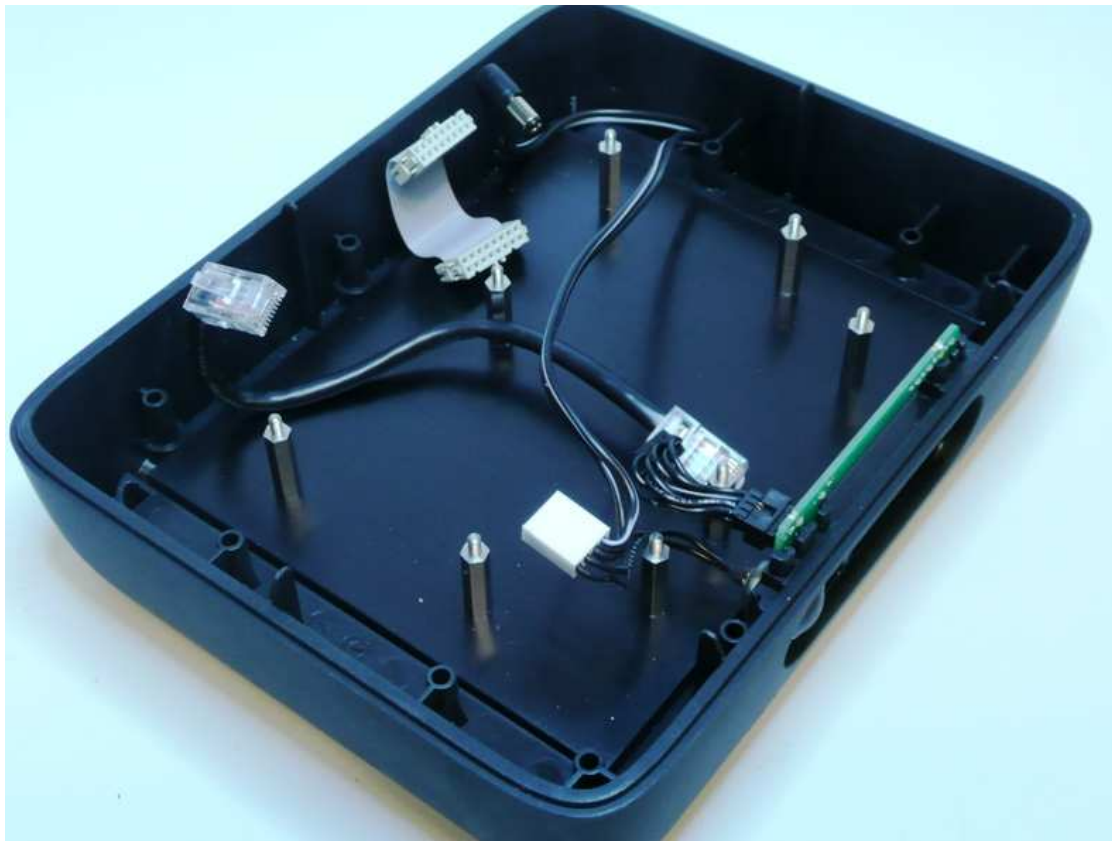
Team2 Base Station Lite, front PWBA



Polar Electro Oy 22.10.2008

Internal photos of FCC ID: INWN8, IC: 6248A-N8

Team2 Base Station Lite, back case assy



Polar Electro Oy 22.10.2008

Internal photos of FCC ID: INWN8, IC: 6248A-N8

Team2 Base Station Lite, module top



Polar Electro Oy 22.10.2008

Internal photos of FCC ID: INWN8, IC: 6248A-N8

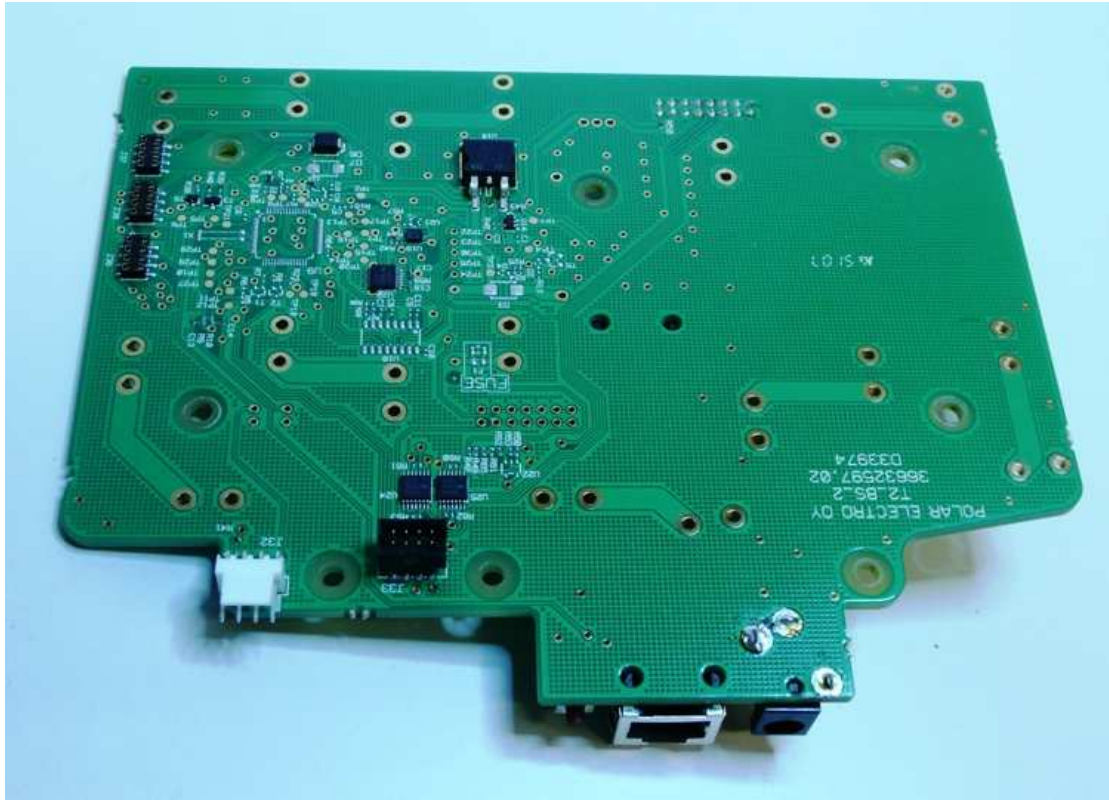
Team2 Base Station Lite, module bottom



Polar Electro Oy 22.10.2008

Internal photos of FCC ID: INWN8, IC: 6248A-N8

Team2 Base Station Lite, PWBA top

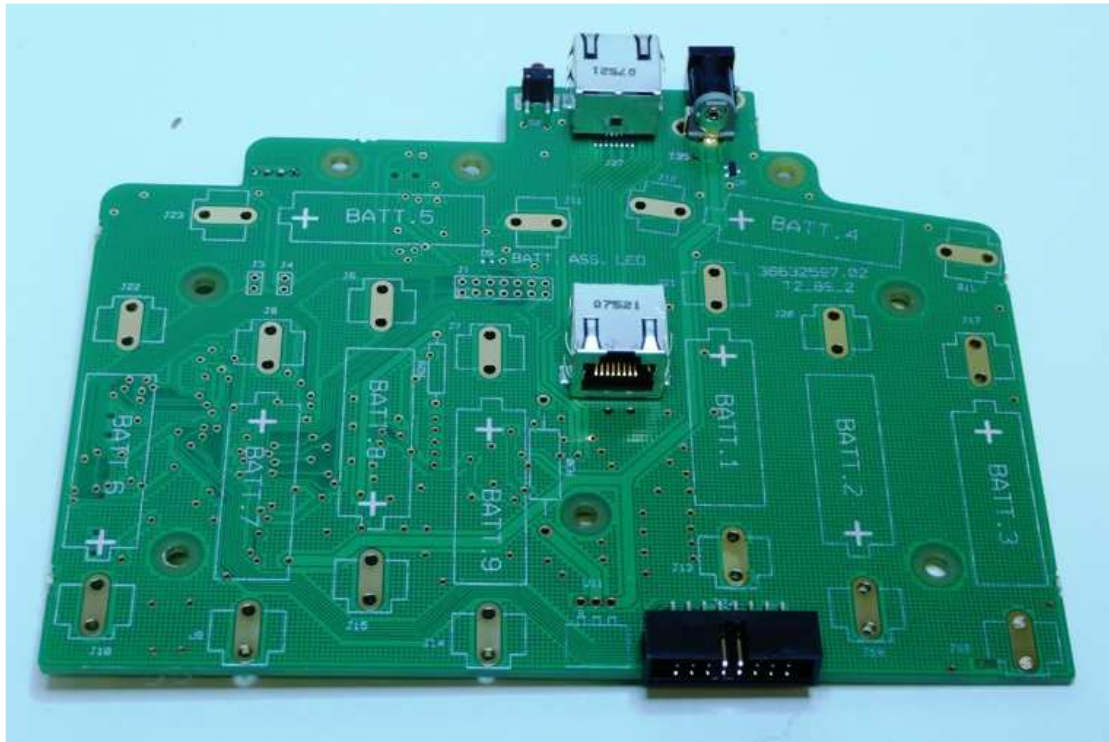




Polar Electro Oy 22.10.2008

Internal photos of FCC ID: INWN8, IC: 6248A-N8

Team2 Base Station Lite, PWBA bottom



Polar Electro Oy 22.10.2008

Internal Photos of FCC ID: INWN8, IC: 6248A-N8

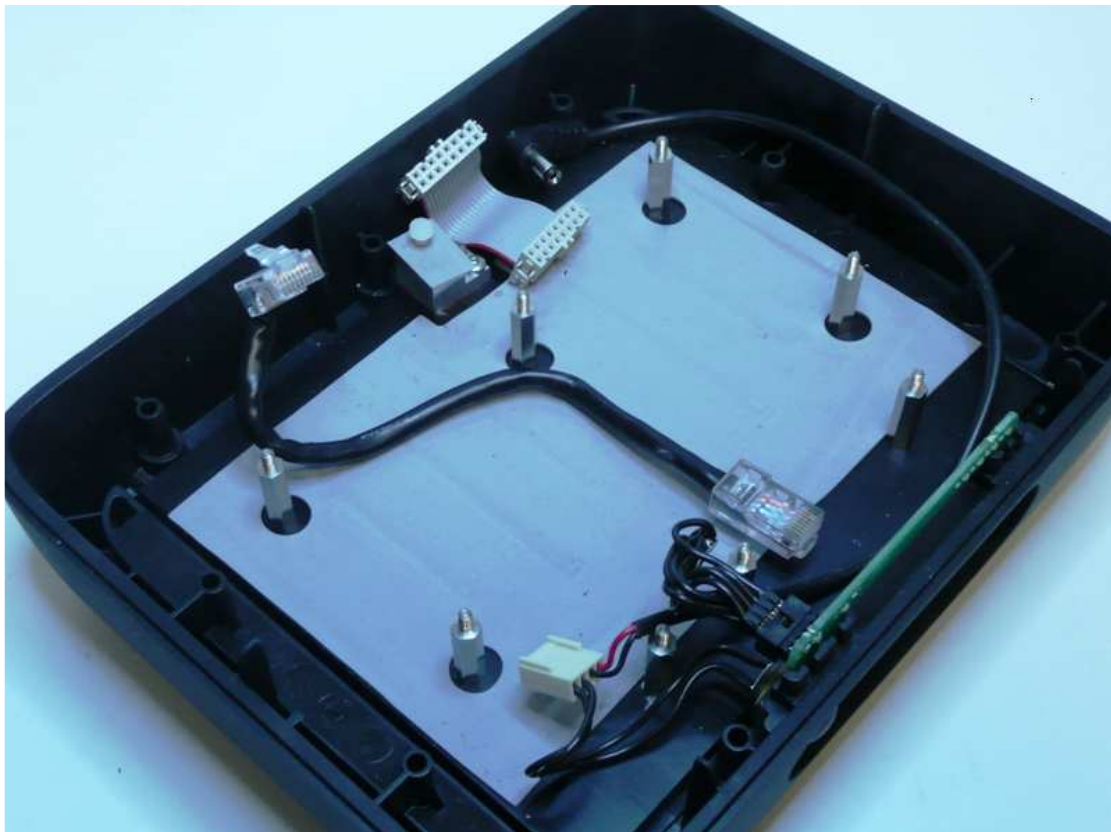
Team2 Base Station Pro, front PWBA



Polar Electro Oy 22.10.2008

Internal Photos of FCC ID: INWN8, IC: 6248A-N8

Team2 Base Station Pro, back case assy





Polar Electro Oy 22.10.2008

Internal Photos of FCC ID: INWN8, IC: 6248A-N8

Team2 Base Station Pro, module top



Polar Electro Oy 22.10.2008

Internal Photos of FCC ID: INWN8, IC: 6248A-N8

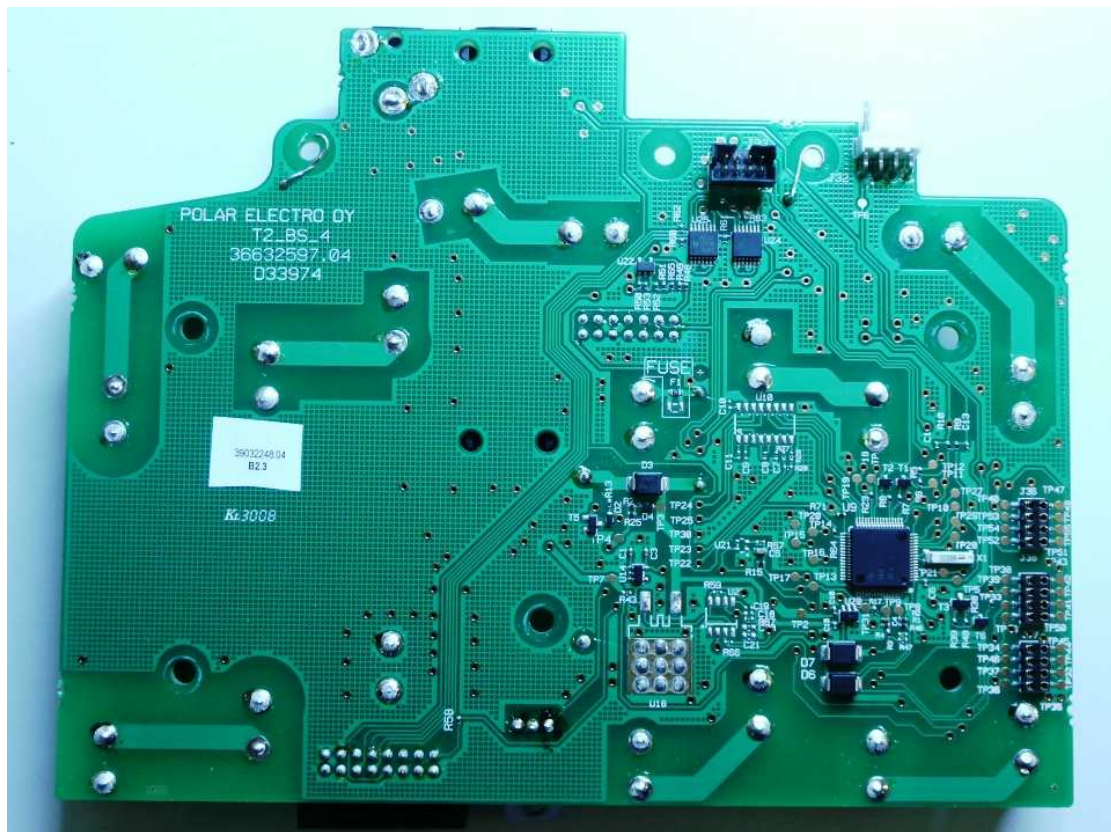
Team2 Base Station Pro, module bottom



Polar Electro Oy 22.10.2008

Internal Photos of FCC ID: INWN8, IC: 6248A-N8

Team2 Base Station Pro, PWBA top



Polar Electro Oy 22.10.2008

Internal Photos of FCC ID: INWN8, IC: 6248A-N8

Team2 Base Station Pro, PWBA bottom

