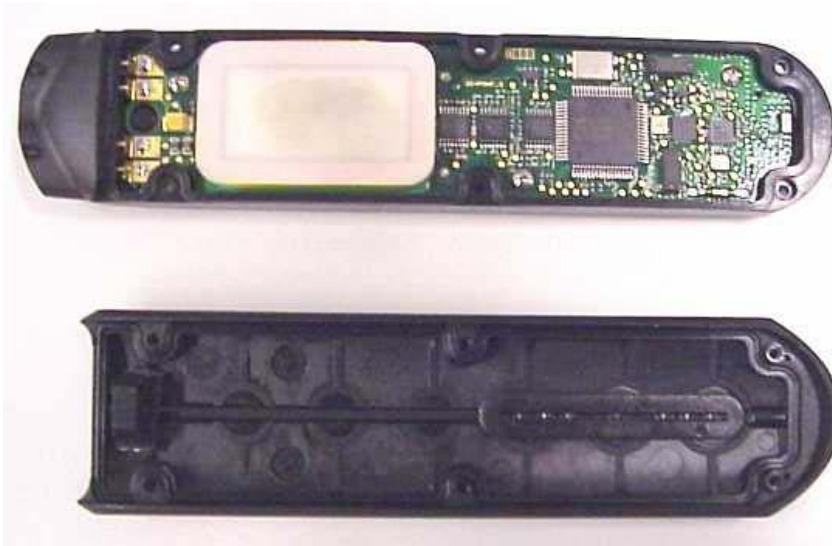


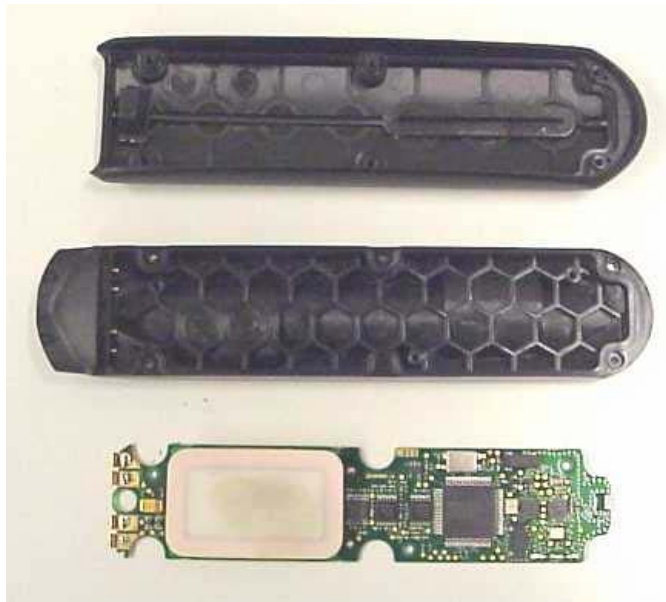
Polar Electro Oy 15.11.2006

Internal photos of FCC ID: INWL2, IC: 6248A-L2

Sensor module opened.



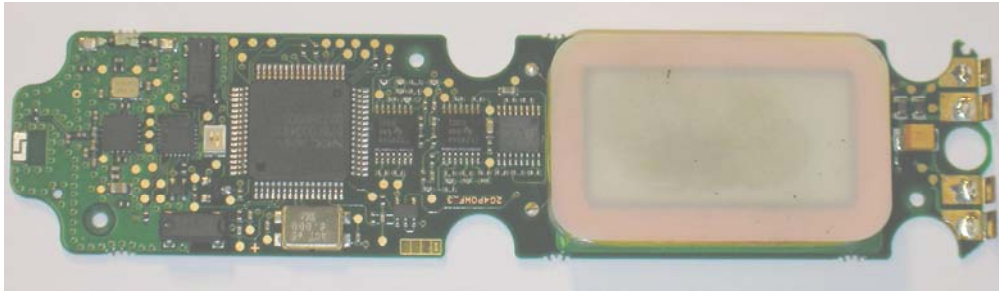
Sensor module disassembled.



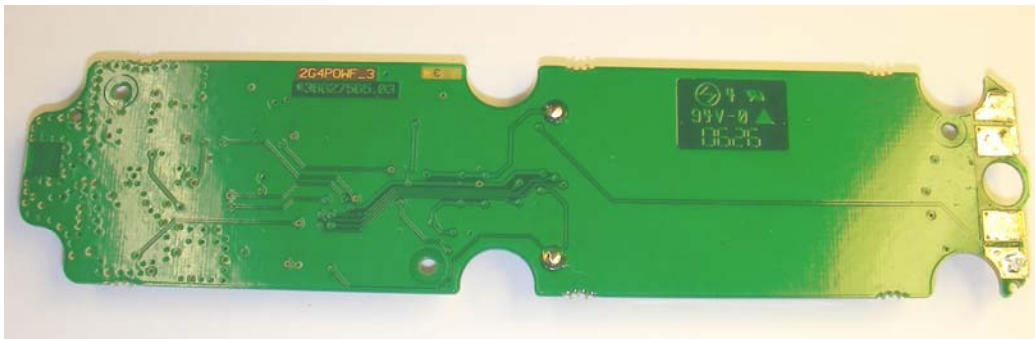
Polar Electro Oy 15.11.2006

Internal photos of FCC ID: INWL2, IC: 6248A-L2

Sensor module PWBA, front view.



Sensor module PWBA, rear view.



Battery module disassembled.

